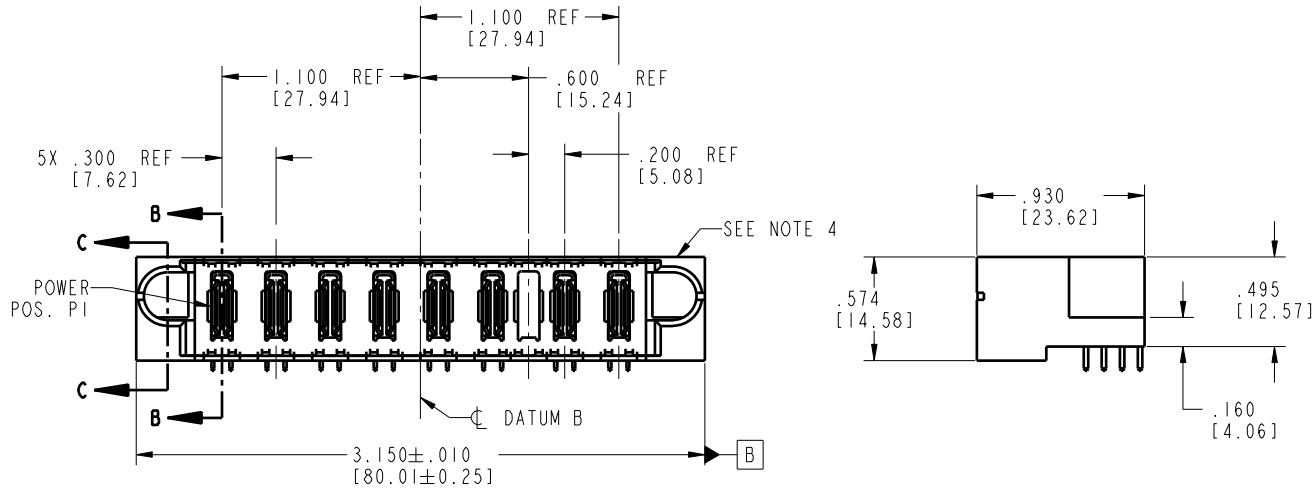


Tous droits strictement réservés. Reproduction ou communication à des tiers interdite sans quelque forme que ce soit sans autorisation écrite du propriétaire. Propriété de c FCI. Droits de reproduction FCI.

All rights strictly reserved. Reproduction or issue to third parties in any form whatsoever is not permitted without written authority from the proprietor. Property of FCI. Copyright FCI.

PRODUCT NO.	POWER										
	E1	P1	P2	P3	P4	P5	P6	P7	P8	P9	E2
51939-144-- NOTE 3		PA	PA	PA	PA	PA	PA	X	PA	PA	



CODE	DIM "M" MATING LENGTH	CONTACT TYPE
PA	N/A [N/A]	POWER
X	OMITTED	OMITTED

mat'l code				SEE NOTE 2		tolerances unless otherwise specified		CUSTOMER		 www.fciconnect.com	
lir	ecr no.	dr	date	linear	.XX±.01/0.X±0.3	COPY		projection		title	
A	V04-1060	TAB	10/26/04		.XXX±.005/0.XX±0.13	INCH/MM				9ACP	
B	DG06-0013	RYAN	01/16/06	angles	.XXX±.002/0.XXX±0.051	scale		1:1		RIGHT ANGLE SOLDER HEADER	
				dr	T. BRUNGARD 10/26/04	product family		PwrBlade		code	
				engr	M. GRAY 10/26/04	size		A		213	
				chr	M. GRAY 10/26/04	dwg no		51939-144		sheet	
				appd	M. GRAY 10/26/04	code		22526		1 of 4	
sheet index	revision	B	B	B	B						
	sheet	1	2	3	4						

Pro/E

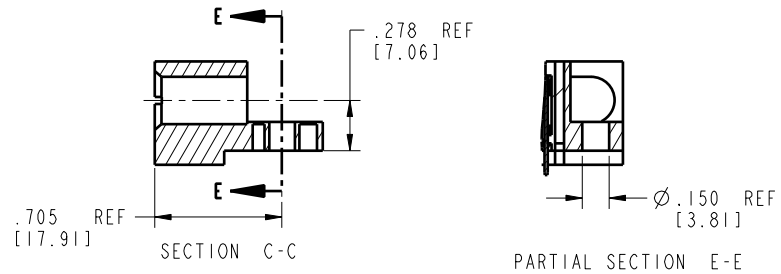
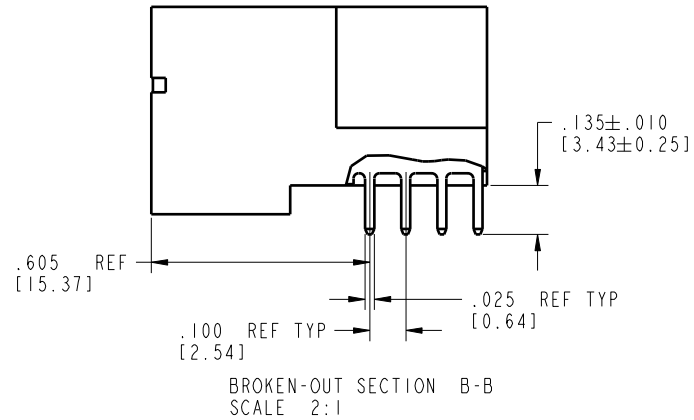
code code 22526

Tous droits strictement réservés. Reproduction ou communication à des tiers interdite sans quelque forme que ce soit sans autorisation écrite du propriétaire. Propriété de c FCI. Droits de reproduction FCI.

All rights strictly reserved. Reproduction or issue to third parties in any form whatsoever is not permitted without written authority from the proprietor. Property of FCI. Copyright FCI.

**PRODUCT NUMBER**

51939-144\_\_  
NOTE 3



mat'l code		SEE NOTE 2		tolerances unless otherwise specified		CUSTOMER		 www.fciconnect.com	
lir	ecn no.	dr	date	linear	.XX±.01/0.X±0.3	COPY		projection	title
B					.XXX±.005/0.XX±0.13				9ACP
				angles	.XXX±.002/0.XXX±0.051				RIGHT ANGLE SOLDER HEADER
				dr	0°±2°			INCH/MM	product family
				engr	T. BRUNGARD 10/26/04			scale	PwrBlade
				chr	M. GRAY 10/26/04			1:1	code
				appd	M. GRAY 10/26/04			A	213
sheet index	revision sheet								size
									dwg no
									51939-144
									sheet
									2 of 4

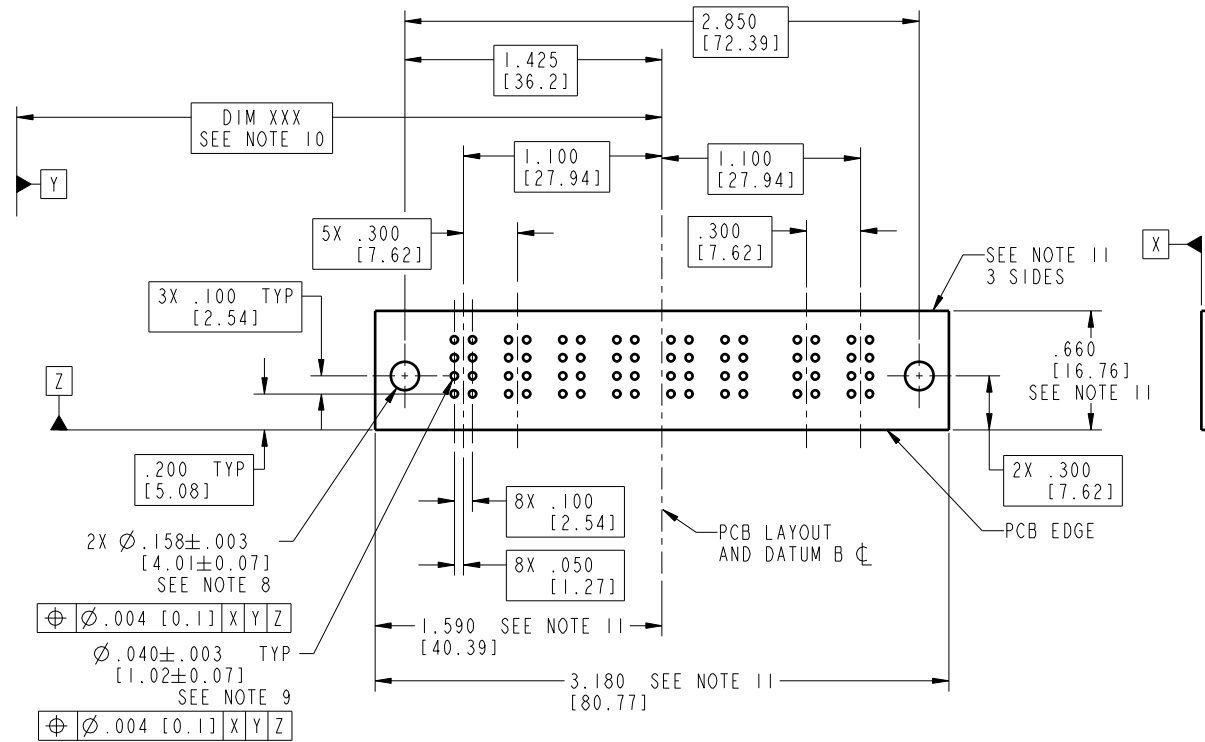
code code 22526

Pro/E

Tous droits strictement réservés. Reproduction ou communication à des tiers interdite sans quelque forme que ce soit sans autorisation écrite du propriétaire. Propriété de c FCI. Droits de reproduction FCI.

All rights strictly reserved. Reproduction or issue to third parties in any form whatsoever is not permitted without written authority from the proprietor. Property of FCI. Copyright FCI.

PRODUCT NUMBER  
51939-144\_\_  
NOTE 3



RECOMMENDED PCB LAYOUT

mat'l code SEE NOTE 2				tolerances unless otherwise specified		CUSTOMER		<b>FCI</b> www.fciconnect.com	
lir	ecn no.	dr	date	linear	.XX±.01/0.X±0.3	projection	title 9ACP		
B					.XXX±.005/0.XX±0.13		RIGHT ANGLE SOLDER HEADER		
				angles	.XXX±.002/0.XXX±0.051		product family	PwrBlade	code
				dr	0°±2°	INCH/MM	size	dwg no	213
				engr	T. BRUNGARD 10/26/04	scale	A	51939-144	sheet
				chr	M. GRAY 10/26/04	1:1			3 of 4
				appd	M. GRAY 10/26/04				
sheet index	revision	sheet							

code code 22526

Pro/E

Tous droits strictement réservés. Reproduction ou communication o des liers interdite sous quelque forme que ce soit sans autorisation écrite du propriétaire. Propriété de c FCI. Droits de reproduction FCI.



All rights strictly reserved. Reproduction or issue to third parties in any form whatever is not permitted without written authority from the proprietor. Property of FCI. Copyright FCI.

**PRODUCT NUMBER**  
51939-144\_\_  
NOTE 3

NOTES:

1. DIMENSIONS AND TOLERANCES ARE IN ACCORDANCE WITH ASME Y14.5M, 1994 UNLESS OTHERWISE SPECIFIED.

CONNECTOR NOTES:

2. HOUSING MATERIAL: UL 94 V-0 GLASS FILLED HIGH-TEMP THERMOPLASTIC  
POWER CONTACT MATERIAL: COPPER ALLOY  
SIGNAL PIN MATERIAL: COPPER ALLOY

3. PLATING:  
51939-144; 51939-144LF; 51939-144GLF SEE PRINT 10064183

4. MANUFACTURER'S NAME, P/N, AND DATE CODE TO APPEAR ON THIS SURFACE.

5. PRODUCT SPECIFICATION GS-12-149.  
APPLICATION SPECIFICATION BUS-20-067.

6. PACKAGED IN TRAYS.

PCB NOTES:

7. ALL HOLE DIAMETERS ARE FINISHED HOLE SIZE.

8. MOUNTING HOLES, WHERE APPLICABLE, ARE UNPLATED.

9.  $\varnothing .0453 \pm .0010$  [1.151 $\pm$ 0.025] DRILLED HOLES PLATED WITH .0003 [0.008] MIN SnPb OVER .001 [0.03] TO .003 [0.08] Cu PLATING TO ACHIEVE  $\varnothing .040 \pm .003$  [1.02 $\pm$ .07] HOLE.

10. "DIM XXX" TO BE DETERMINED BY THE CUSTOMER.

11. CONNECTOR KEEP-OUT ZONE.

mat'l code		SEE NOTE 2		tolerances unless otherwise specified		CUSTOMER		A FCI		www.fciconnect.com	
lir	ecn no.	dr	date	linear	.XX±.01/0.X±0.3	COPY		projection	title		
B					.XXX±.005/0.XX±0.13				9ACP		
				angles	.XXX±.002/0.XXX±0.051				RIGHT ANGLE SOLDER HEADER		
				dr	0°±2°	INCH/MM		product family		PwrBlade	code
				engr	T. BRUNGARD 10/26/04	scale		size	dwg no	213	
				chr	M. GRAY 10/26/04	1:1		A	51939-144	sheet	
				opod	M. GRAY 10/26/04					4 of 4	
sheet index	revision sheet										

1 | 2

3 |

4

1 | 2

Pro/E

3 |

code code 22526

4