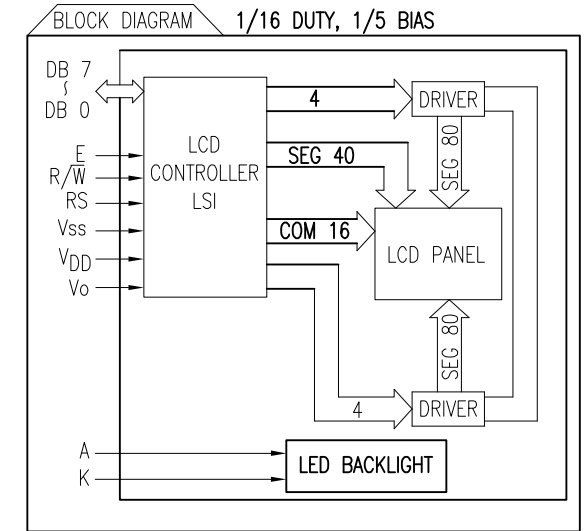
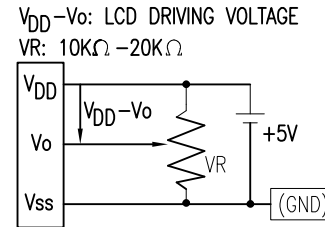


PART NUMBER	LCM-H04002DWN-1G	REV.	C
DATE	E.C.N. NUMBER AND REVISION COMMENTS		REV.
07.15.09	E.C.N. #11577.		A
10.02.03	E.C.N. #11587.		B
05.23.16	ECN=Lumex201600010		C

PIN CONFIGURATION					
PIN NO.	SYMBOL	LEVEL	FUNCTION		
1	V _{SS}	-	POWER SUPPLY	GND (0V)	
2	V _{DD}	-		5V	
3	V _O	-		FOR LCD DRIVE	
4	RS	H/L	REGISTER SELECT SIGNAL H: DATA INPUT L: INSTRUCTION INPUT		
5	R/ \bar{W}	H/L	H: DATA READ (MODULE-->MPU) L: DATA WRITE (MODULE<--MPU)		
6	E	H,H->L	ENABLE		
7~14	DB0~DB7	H/L	DATA BUS-SOFTWARE SELECTABLE 4 OR 8 BIT MODE.		
15	A	3.2V	ANODE	LED BACKLIGHT	
16	K	-	CATHODE	LED BACKLIGHT	




ⓑ ELECTRICAL CHARACTERISTICS V_{DD}=4.7V to 5.3V, T_A=25°C

ITEM	SYMBOL	CONDITION	STANDARD VALUE			UNIT	
			MIN.	TYP.	MAX.		
SUPPLY VOLTAGE FOR LOGIC	V _{DD} -V _{SS}	-	4.5	5.0	5.5	V	
SUPPLY CURRENT FOR LOGIC	I _{DD}	V _{DD} =5V	-	3.0	5.0	mA	
INPUT VOLTAGE	HIGH LOW	V _{IH}	-	0.7V _{DD}	-	V _{DD}	V
		V _{IL}	-	-0.3	-	0.6	V
LCD MODULE DRIVING VOLTAGE	V _{DD} -V _O	-	4.2	4.5	4.8	V	
LED BACKLIGHT	VOLTAGE	V _f	I _f =60mA	-	3.2	3.4	V
	REVERSE CURRENT	I _r	V _r =5V	-	-	0.2	mA
	POWER CONSUMPTION	P _D	-	-	192	204	mW
	LUMINOUS	L	I _f =60mA	100	120	-	cd/m
	COLOR	-	I _f =60mA	520	525	530	nm ²

ABSOLUTE MAXIMUM RATINGS

ITEM	SYMBOL	TEST CONDITION	STANDARD VALUE		UNIT
			MIN	MAX	
SUPPLY VOLTAGE FOR LOGIC	V _{DD} -V _{SS}	T _a =25°C	-0.3	7	V
SUPPLY VOLTAGE FOR LCD DRIVE	V _{DD} -V _O	-	-0.3	10	V
INPUT VOLTAGE	V _I	T _a =25°C	-0.3	V _{DD}	V
OPERATING TEMPERATURE	T _{opr}	LCM-H	-20	70	°C
STORAGE TEMPERATURE	T _{stg}	LCM-H	-30	80	°C

*UNLESS OTHERWISE SPECIFIED TOLERANCES PER DECIMAL PRECISION ARE: X=±1 (±0.039), X.X=±0.5 (±0.020), X.XX=±0.25 (±0.010), X.XXX=±0.127 (±0.005). LEAD SIZE=±0.05 (±0.002), LEAD LENGTH=±0.75 (±0.030). MIN.= +DECIMAL PRECISION -0.00, MAX.= +0.00 -DECIMAL PRECISION

 <p>425 N. GARY AVE. CAROL STREAM, IL 60188 PHONE: 800-278-5666 FAX: 630-315-2152 WEB: WWW.LUMEX.COM</p>	40 x 2 LCD CHARACTER MODULE, FSTN BLCK, NEGATIVE IMAGE, 525nm GREEN LED BACKLIGHT.	DATE: 05.23.16	DRAWN BY: E.C.	
	*THE SPECIFICATIONS MAY CHANGE AT ANY TIME WITHOUT NOTICE DUE TO NEW MATERIALS OR PRODUCT IMPROVEMENT.**	PAGE: 1 OF 2	CHKD BY: G.Y.	
	CONFIDENTIAL INFORMATION THE INFORMATION CONTAINED IN THIS DOCUMENT IS THE PROPERTY OF LUMEX INC. EXCEPT AS SPECIFICALLY AUTHORIZED IN WRITING BY LUMEX INC., THE HOLDER OF THIS DOCUMENT SHALL KEEP ALL INFORMATION CONTAINED HEREIN CONFIDENTIAL AND SHALL PROTECT SAME IN WHOLE OR IN PART FROM DISCLOSURE AND DISSEMINATION TO ALL THIRD PARTIES.	SCALE: N/A	APRVD BY: Ray	
		UNIT: mm [INCH]		Ⓟ