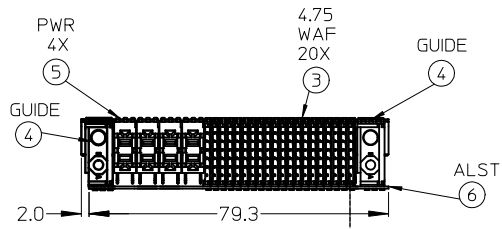
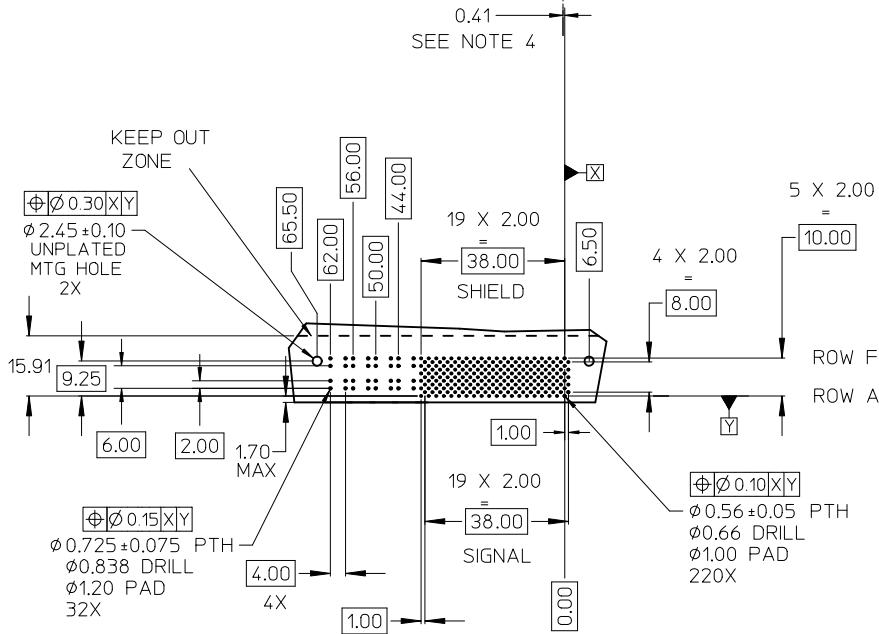


ITEM	PART NUMBER	QTY	DESCRIPTION
1	74601-0081	1	STIFFENER
2	73726-0000	2	MOUNTING SCREW
3	74602-1030	20	4.75mm SIGNAL WAFER, LF
4	74603-8000	2	GUIDE MODULE, NO KEY
5	75891-6000	4	POWER MODULE, LF
6	74719-1079	1	ALIGNMENT STRIP
7	73728-0000	1	CUSTOM LABEL



- NOTES:
- MATERIALS: HOUSING: LIQUID CRYSTAL POLYMER (LCP), GLASS-FILLED, UL94V-0, BLACK. TERMINALS: COPPER ALLOY. STIFFENER: STAINLESS STEEL.
  - FINISH: SELECTIVE GOLD (Au) IN CONTACT AREA, 0.76 micrometers MINIMUM THICKNESS; SELECTIVE MATTE TIN (Sn) IN TAIL AREA; NICKEL (Ni) UNDERPLATE OVERALL.
  - THIS PART CONFORMS TO MOLEX PRODUCT SPECIFICATION PS-74031-999.
  - DISTANCE FROM CENTER OF CONTACT TO CENTER OF PLATED THROUGH HOLE.
  - PARTS PACKED PER PK-70873-0892. SCREWS PACKED IN BAG WITH TUBE.
  - LABEL MARKED WITH MOLEX PART NUMBER AND DATE CODE. LABEL CAN BE REPLACED WITH A LASER MARK ON THE STIFFENER.
  - THIS PART CONFORMS TO MOLEX COSMETIC SPECIFICATION PS-45499-002 CLASS B.



LEAD-FREE  
PLATING

CUSTOMER: SYCAMORE

CIRCUIT BOARD LAYOUT  
CONNECTOR SIDE

REV	DESCRIPTION	QUALITY SYMBOLS	GENERAL TOLERANCES (UNLESS SPECIFIED)	DIMENSION STYLE	SCALE	DESIGN UNITS	THIRD ANGLE PROJECTION
REV TO LEADFREE	REV TO LEADFREE	▽=0	mm INCH	MM ONLY	1:1	METRIC	THIRD ANGLE PROJECTION
EC NO: UCP2012-2842	DRWN:WOLFE 2012/02/29	▽=0	4 PLACES ± --- ± ---	DRAWN BY DATE	TITLE	VHDM 6 ROW, LF RIGHT ANGLE MALE SALES ASSEMBLY	
CHKD:SDANNELLEY 2012/02/29	APPR:SMILLER 2012/03/14	▽=0	3 PLACES ± --- ± ---	CHECKED BY DATE	MOLEX INCORPORATED		
		▽=0	2 PLACES ± 0.25 ± ---	APPROVED BY DATE	DOCUMENT NO. SHEET NO.		
			1 PLACE ± 0.38 ± ---	MATERIAL NO. DATE	74600-1270 SD-74600-270 1 OF 1		
			ANGULAR ± 1/2°	THIS DRAWING CONTAINS INFORMATION THAT IS PROPRIETARY TO MOLEX INCORPORATED AND SHOULD NOT BE USED WITHOUT WRITTEN PERMISSION			
			DRAFT WHERE APPLICABLE MUST REMAIN WITHIN DIMENSIONS				