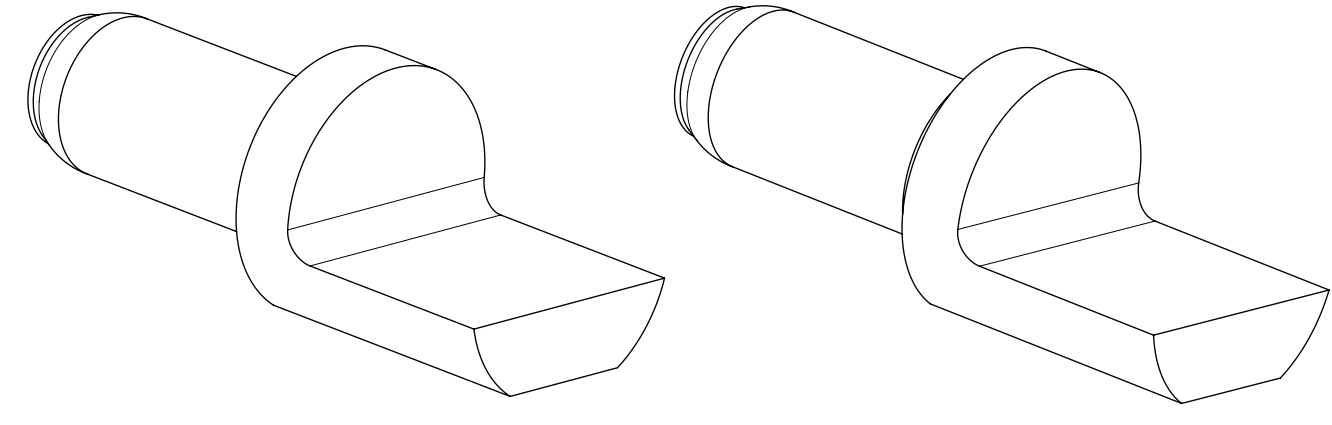


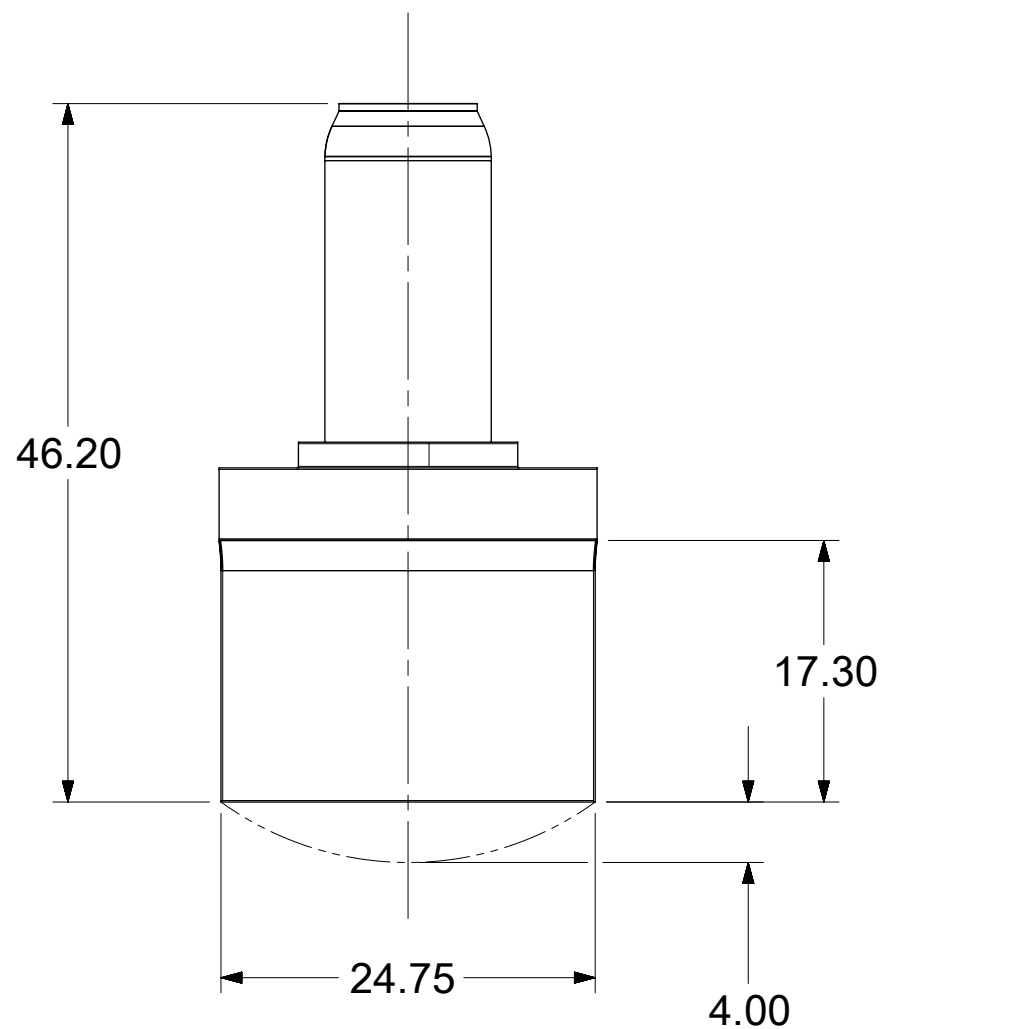
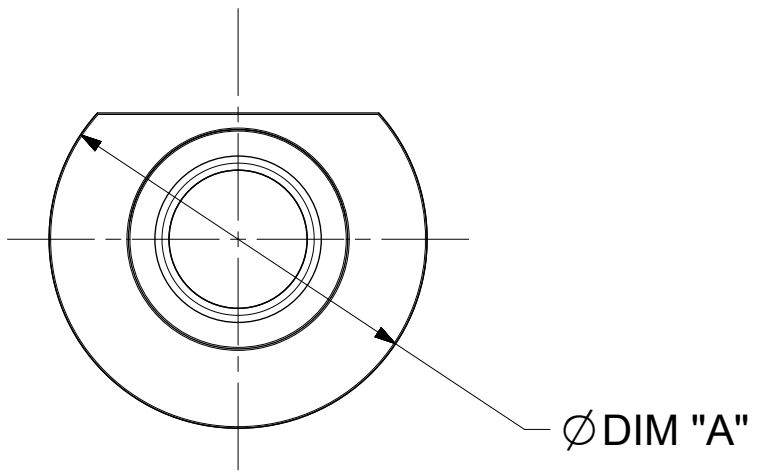
PART NUMBER	WIRE GAUGE	DIM "A"	DIM "B"	DIM "C"
172151-0051	4/0; 3/0	25.00	8.35	6.60
172151-0052	2/0; 1/0; 1AWG	18.50	7.75	5.50

- NOTES:
- MATERIAL: TERMINAL - COPPER
 - PLATING: SILVER OVER NICKEL
 - TERMINAL IS COATED WITH MOLEX EB4 ENVIRONMENTAL BARRIER. WHEN HANDLING THE TERMINALS WEAR PROTECTIVE GLOVES TO PREVENT CROSS CONTAMINATION. AVOID HANDLING TERMINALS IN THE CONTACT AREAS AS SHOWN IN THE DRAWING VIEWS.
 - BEFORE USING THE TERMINAL FOR CABLE TERMINATION REMOVE THE PROTECTIVE TAPE LAYER FROM THE WELD FLAT.

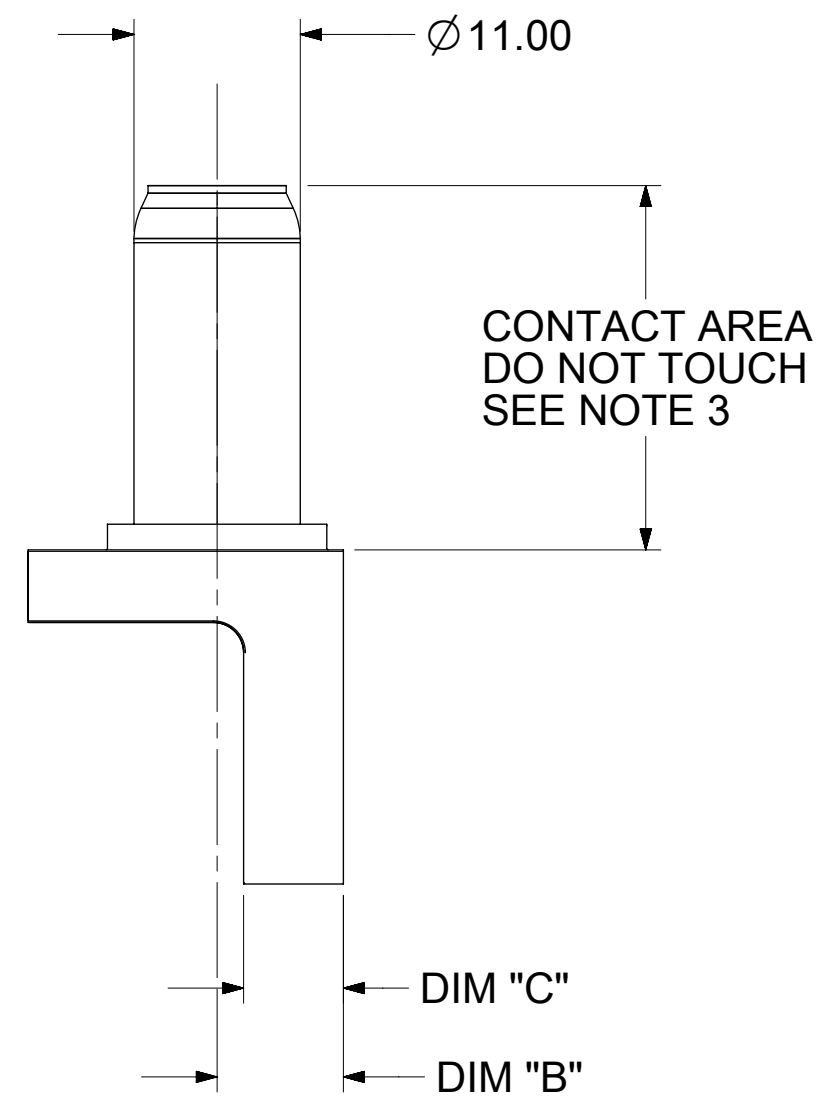


172151-0051 172151-0052

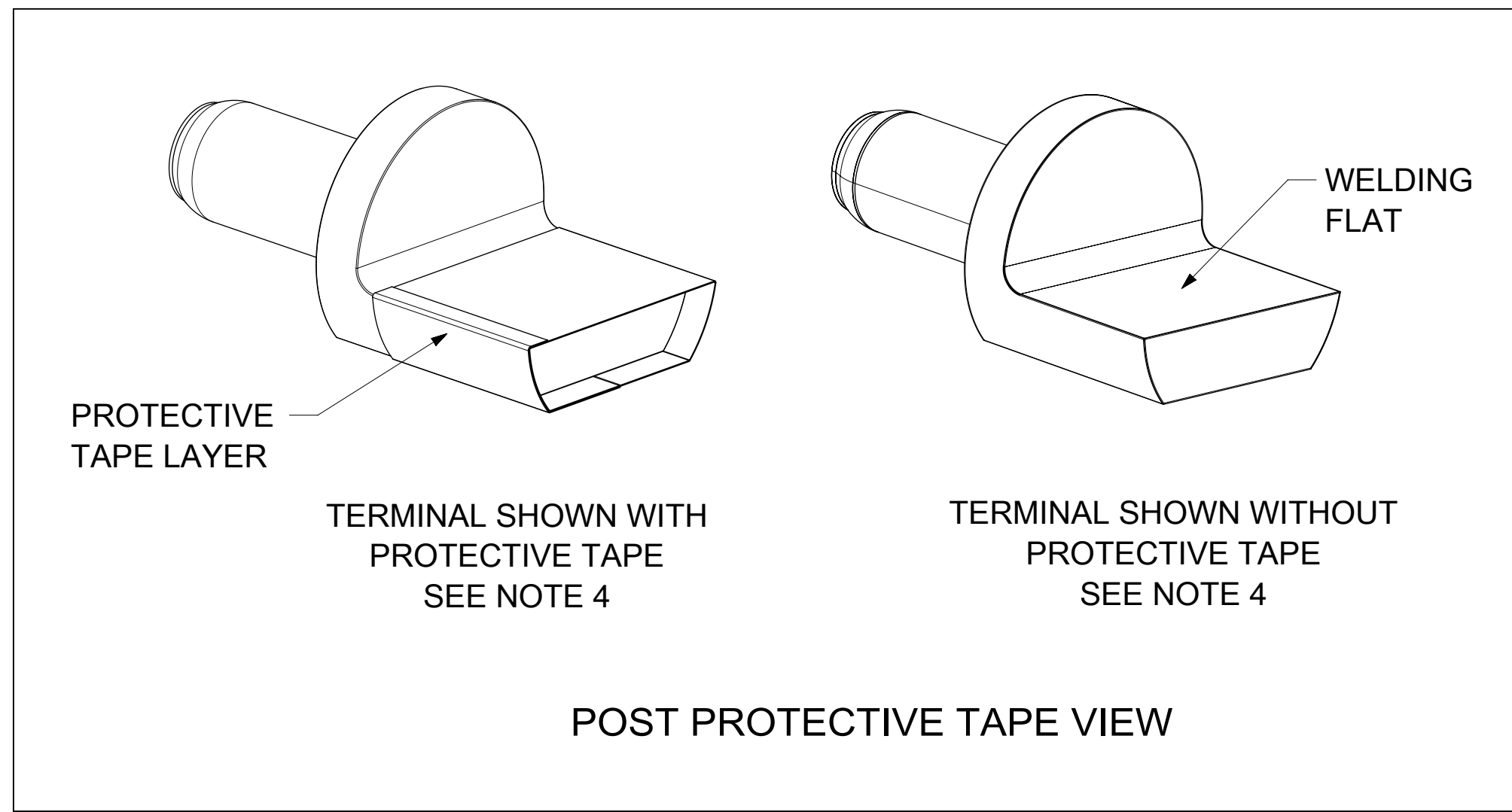
TERMINALS SHOWN WITHOUT PROTECTIVE TAPE



FREE FORM SHAPE VARIATION ALLOWED TO OCCUR IN THIS AREA



172151-0051 TERMINAL SHOWN FOR REFERENCE ONLY AND WITHOUT THE PROTECTIVE TAPE LAYER



THIS DRAWING CONTAINS INFORMATION THAT IS PROPRIETARY TO MOLEX ELECTRONIC TECHNOLOGIES, LLC AND SHOULD NOT BE USED WITHOUT WRITTEN PERMISSION											
SYMBOLS		DIMENSION UNITS		SCALE		CURRENT REV DESC: MIGRATED DOCUMENT					
▽ = 0		mm		2:1		molex PIN TERMINAL FOR ULTRA-SONIC WELDING IMPERIUM PLUS PRODUCT CUSTOMER DRAWING					
▽ = 0		GENERAL TOLERANCES (UNLESS SPECIFIED)									
▽ = 0		ANGULAR TOL ± 0.5°									
▽ = 0		4 PLACES ±		EC NO: 629705							
▽ = 0		3 PLACES ±		DRWN: VHANDI 2017/12/26							
▽ = 0		2 PLACES ± 0.5		CHK'D: JFMURPHY 2020/01/06							
▽ = 0		1 PLACE ± 0.8		APPR: JFMURPHY 2020/01/06							
☒ = 0		INITIAL REVISION:				DOCUMENT NUMBER					
■ = 0		DRAFT WHERE APPLICABLE MUST REMAIN WITHIN DIMENSIONS		THIRD ANGLE PROJECTION		DRAWING		SERIES		REVISION	
▽ = 0				C-SIZE		172151		SD-172151-0001		PSD 001 C	
DOCUMENT STATUS		P1		RELEASE DATE		2020/01/06 17:25:43		MATERIAL NUMBER		CUSTOMER	
12		11		10		9		SEE CHART		GENERAL MARKET	
								1 OF 1			