

## Han Megabit insert male 1 Entry

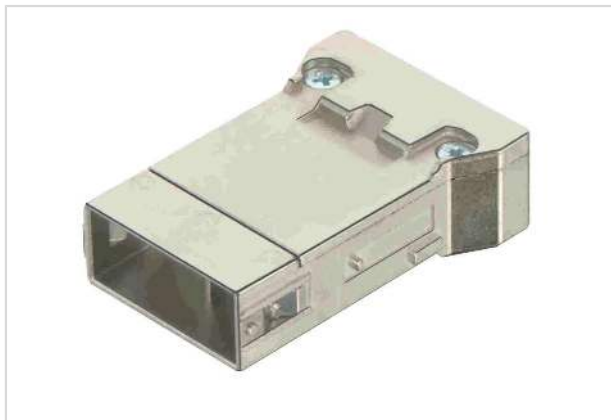


Image is for illustration purposes only. Please refer to product description.

Part number	09 14 008 3021
Specification	Han Megabit insert male 1 Entry
HARTING eCatalogue	<a href="https://b2b.harting.com/09140083021">https://b2b.harting.com/09140083021</a>

### Identification

Category	Inserts
Specification	Han <sup>®</sup> Megabit insert 2x 4 contacts One entry

### Version

Termination method	Crimp termination
Gender	Male
Number of contacts	8
further contacts	+ shielding
Details	Please order crimp contacts separately. Please order adapter module separately.
Details	Not suitable for hoods/housings low construction as well as Han-Modular <sup>®</sup> Eco, Han-Modular <sup>®</sup> Compact and Han-Modular <sup>®</sup> Twin.

### Technical characteristics

Conductor cross-section	0.14 ... 2.5 mm <sup>2</sup>
Rated current	10 A
Rated voltage	50 V
Rated impulse voltage	0.8 kV
Pollution degree	3
Rated current acc. to UL	2 A AWG 26 ... AWG 20 6 A AWG 18 8 A AWG 16 ... AWG 14
Rated voltage acc. to UL	30 V



Pushing Performance  
Since 1945

## Technical characteristics

Transmission characteristics	Cat. 5 Class D up to 100 MHz
Data rate	100 Mbit/s
Contact resistance, shielding	≤100 mΩ
Limiting temperature	-40 ... +85 °C
Mating cycles	≥500

## Material properties

Material (insert)	Polycarbonate (PC)
Colour (insert)	RAL 7032 (pebble grey)
Material (shielding)	Zinc die-cast, nickel-plated
Material flammability class acc. to UL 94	V-0
RoHS	compliant
ELV status	compliant
China RoHS	e
REACH Annex XVII substances	Not contained
REACH ANNEX XIV substances	Not contained
REACH SVHC substances	Not contained
California Proposition 65 substances	Not contained
Fire protection on railway vehicles	EN 45545-2 (2020-08)
Requirement set with Hazard Levels	R22 (HL 1-3) R23 (HL 1-3)

## Specifications and approvals

Specifications	IEC 60664-1 IEC 61984
UL / CSA	UL 1977 ECBT2.E235076 CSA-C22.2 No. 182.3 ECBT8.E235076
Approvals	DNV GL

## Commercial data

Packaging size	1
Net weight	44 g
Country of origin	Germany
European customs tariff number	85389099
GTIN	5713140020696



**Pushing Performance**  
Since 1945

## Commercial data

eCl@ss

27440218 Module for industrial connectors (data)

---