

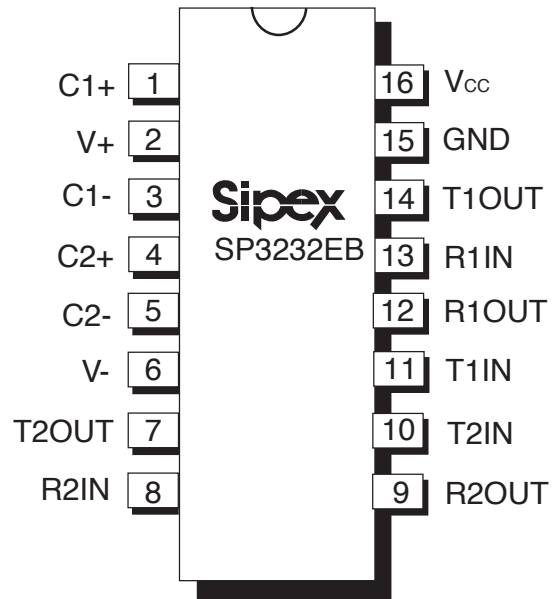


SP3222EB/3232EB

True +3.0V to +5.5V RS-232 Transceivers

FEATURES

- Meets true EIA/TIA-232-F Standards from a +3.0V to +5.5V power supply
- 250kbps Transmission Rate Under Load
- 1µA Low-Power Shutdown with Receivers Active (**SP3222EB**)
- Interoperable with RS-232 down to +2.7V power source
- Enhanced ESD Specifications:
 - ±15kV Human Body Model
 - ±15kV IEC1000-4-2 Air Discharge
 - ±8kV IEC1000-4-2 Contact Discharge



Now Available in Lead Free Packaging

DESCRIPTION

The SP3222EB/3232EB series is an RS-232 transceiver solution intended for portable or hand-held applications such as notebook or palmtop computers. The SP3222EB/3232EB series has a high-efficiency, charge-pump power supply that requires only 0.1µF capacitors in 3.3V operation. This charge pump allows the SP3222EB/3232EB series to deliver true RS-232 performance from a single power supply ranging from +3.0V to +5.5V. The SP3222EB/3232EB are 2-driver/2-receiver devices. This series is ideal for portable or hand-held applications such as notebook or palmtop computers. The ESD tolerance of the SP3222EB/3232EB devices are over ±15kV for both Human Body Model and IEC1000-4-2 Air discharge test methods. The SP3222EB device has a low-power shutdown mode where the devices' driver outputs and charge pumps are disabled. During shutdown, the supply current falls to less than 1µA.

SELECTION TABLE

| MODEL | Power Supplies | RS-232 Drivers | RS-232 Receivers | External Components | Shutdown | TTL 3-State | No. of Pins |
|-----------------|----------------|----------------|------------------|---------------------|----------|-------------|-------------|
| SP3222EB | +3.0V to +5.5V | 2 | 2 | 4 | Yes | Yes | 18, 20 |
| SP3232EB | +3.0V to +5.5V | 2 | 2 | 4 | No | No | 16 |

ABSOLUTE MAXIMUM RATINGS

These are stress ratings only and functional operation of the device at these ratings or any other above those indicated in the operation sections of the specifications below is not implied. Exposure to absolute maximum rating conditions for extended periods of time may affect reliability and cause permanent damage to the device.

| | |
|---|----------------|
| V_{CC} | -0.3V to +6.0V |
| $V+$ (NOTE 1) | -0.3V to +7.0V |
| $V-$ (NOTE 1) | +0.3V to -7.0V |
| $V+ + IV-I$ (NOTE 1) | +13V |
| I_{CC} (DC V_{CC} or GND current) | ± 100 mA |

Input Voltages

| | |
|-----------------------------|----------------|
| $TxIN, \overline{EN}$ | -0.3V to +6.0V |
| $RxIN$ | ± 25 V |

Output Voltages

| | |
|---------------|------------------------------|
| $TxOUT$ | ± 13.2 V |
| $RxOUT$ | -0.3V to ($V_{CC} + 0.3$ V) |

Short-Circuit Duration

| | |
|---------------|------------|
| $TxOUT$ | Continuous |
|---------------|------------|

Storage Temperature -65°C to +150°C

Power Dissipation Per Package

| | |
|--|--------|
| 20-pin SSOP (derate 9.25mW/°C above +70°C) | 750mW |
| 18-pin PDIP (derate 15.2mW/°C above +70°C) | 1220mW |
| 18-pin SOIC (derate 15.7mW/°C above +70°C) | 1260mW |
| 20-pin TSSOP (derate 11.1mW/°C above +70°C) | 890mW |
| 16-pin SSOP (derate 9.69mW/°C above +70°C) | 775mW |
| 16-pin PDIP (derate 14.3mW/°C above +70°C) | 1150mW |
| 16-pin Wide SOIC (derate 11.2mW/°C above +70°C) | 900mW |
| 16-pin TSSOP (derate 10.5mW/°C above +70°C) | 850mW |
| 16-pin nSOIC (derate 13.57mW/°C above +70°C) | 1086mW |

NOTE 1: $V+$ and $V-$ can have maximum magnitudes of 7V, but their absolute difference cannot exceed 13V.

NOTE 2: Driver Input hysteresis is typically 250mV.

ELECTRICAL CHARACTERISTICS

Unless otherwise noted, the following specifications apply for $V_{CC} = +3.0$ V to +5.5V with $T_{AMB} = T_{MIN}$ to T_{MAX} , C_1 to $C_4 = 0.1\mu$ F

| PARAMETER | MIN. | TYP. | MAX. | UNITS | CONDITIONS |
|--|----------------|----------------|-----------|----------|--|
| DC CHARACTERISTICS | | | | | |
| Supply Current | | 0.3 | 1.0 | mA | no load, $T_{AMB} = +25^\circ$ C, $V_{CC} = 3.3$ V, $TxIN = V_{CC}$ or GND |
| Shutdown Supply Current | | 1.0 | 10 | μ A | $\overline{SHDN} = GND$, $T_{AMB} = +25^\circ$ C, $V_{CC} = +3.3$ V, $TxIN = V_{CC}$ or GND |
| LOGIC INPUTS AND RECEIVER OUTPUTS | | | | | |
| Input Logic Threshold LOW | GND | | 0.8 | V | $TxIN, \overline{EN}, \overline{SHDN}$, Note 2 |
| Input Logic Threshold HIGH | 2.0 2.4 | | V_{CC} | V V | $V_{CC} = 3.3$ V, Note 2 $V_{CC} = 5.0$ V, Note 2 |
| Input Leakage Current | | ± 0.01 | ± 1.0 | μ A | $TxIN, \overline{EN}, \overline{SHDN}$, $T_{AMB} = +25^\circ$ C, $V_{IN} = 0$ V to V_{CC} |
| Output Leakage Current | | ± 0.05 | ± 10 | μ A | receivers disabled, $V_{OUT} = 0$ V to V_{CC} |
| Output Voltage LOW | | | 0.4 | V | $I_{OUT} = 1.6$ mA |
| Output Voltage HIGH | $V_{CC} - 0.6$ | $V_{CC} - 0.1$ | | V | $I_{OUT} = -1.0$ mA |
| DRIVER OUTPUTS | | | | | |
| Output Voltage Swing | ± 5.0 | ± 5.4 | | V | 3k Ω load to ground at all driver outputs, $T_{AMB} = +25^\circ$ C |
| Output Resistance | 300 | | | Ω | $V_{CC} = V+ = V- = 0$ V, $T_{OUT} = +2$ V |
| Output Short-Circuit Current | | ± 35 | ± 60 | mA | $V_{OUT} = 0$ V |
| Output Leakage Current | | | ± 25 | μ A | $V_{OUT} = \pm 12$ V, $V_{CC} = 0$ V, or 3.0V to 5.5V, drivers disabled |

ELECTRICAL CHARACTERISTICS

Unless otherwise noted, the following specifications apply for $V_{CC} = +3.0V$ to $+5.5V$ with $T_{AMB} = T_{MIN}$ to T_{MAX} , C_1 to $C_4 = 0.1\mu F$. Typical Values apply at $V_{CC} = +3.3V$ or $+5.5V$ and $T_{AMB} = 25^\circ C$.

| PARAMETER | MIN. | TYP. | MAX. | UNITS | CONDITIONS |
|------------------------------|------------|--------------|------------|------------|--|
| RECEIVER INPUTS | | | | | |
| Input Voltage Range | -25 | | +25 | V | |
| Input Threshold LOW | 0.6 0.8 | 1.2 1.5 | | V | $V_{CC}=3.3V$ $V_{CC}=5.0V$ |
| Input Threshold HIGH | | 1.5 1.8 | 2.4 2.4 | V | $V_{CC}=3.3V$ $V_{CC}=5.0V$ |
| Input Hysteresis | | 0.3 | | V | |
| Input Resistance | 3 | 5 | 7 | k Ω | |
| TIMING CHARACTERISTICS | | | | | |
| Maximum Data Rate | 250 | | | kbps | $R_L=3k\Omega$, $C_L=1000pF$, one driver switching |
| Receiver Propagation Delay | | 0.15 0.15 | | μs | t_{PHL} , RxIN to RxOUT, $C_L=150pF$ t_{PLH} , RxIN to RxOUT, $C_L=150pF$ |
| Receiver Output Enable Time | | 200 | | ns | |
| Receiver Output Disable Time | | 200 | | ns | |
| Driver Skew | | 100 | | ns | $ t_{PHL} - t_{PLH} $, $T_{AMB} = 25^\circ C$ |
| Receiver Skew | | 50 | | ns | $ t_{PHL} - t_{PLH} $ |
| Transition-Region Slew Rate | | | 30 | V/ μs | $V_{CC} = 3.3V$, $R_L = 3K\Omega$, $T_{AMB} = 25^\circ C$, measurements taken from $-3.0V$ to $+3.0V$ or $+3.0V$ to $-3.0V$ |

TYPICAL PERFORMANCE CHARACTERISTICS

Unless otherwise noted, the following performance characteristics apply for $V_{CC} = +3.3V$, 250kbps data rates, all drivers loaded with $3k\Omega$, $0.1\mu F$ charge pump capacitors, and $T_{AMB} = +25^{\circ}C$.

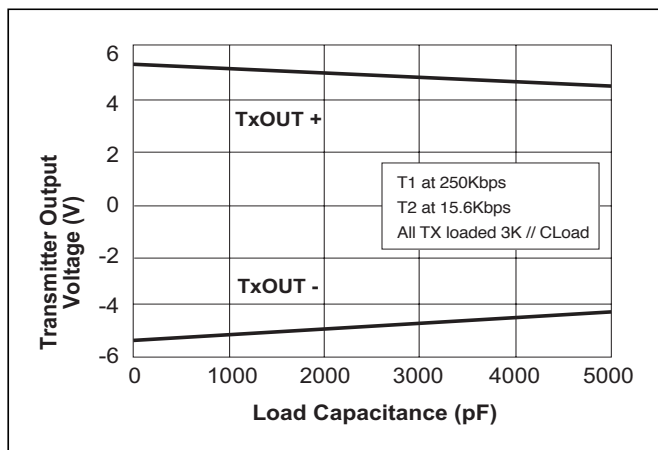


Figure 1. Transmitter Output Voltage vs Load Capacitance.

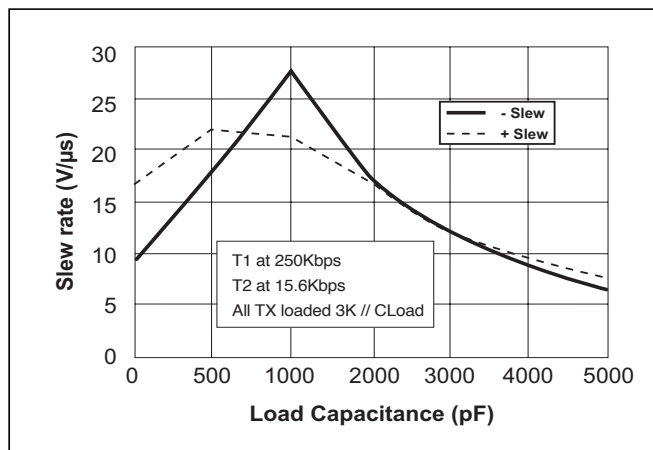


Figure 2. Slew Rate vs Load Capacitance.

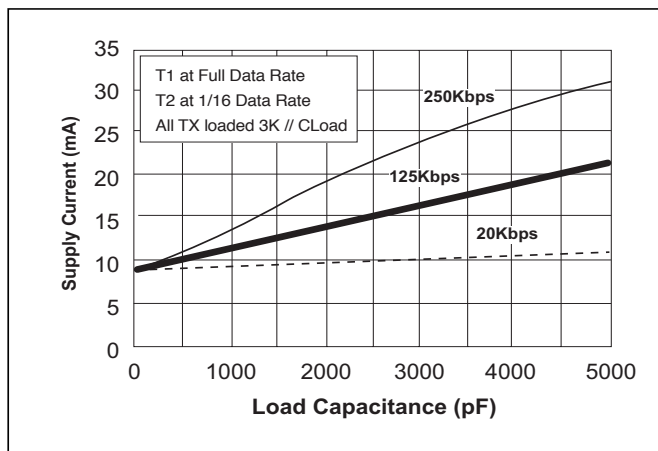


Figure 3. Supply Current vs Load Capacitance when Transmitting Data.

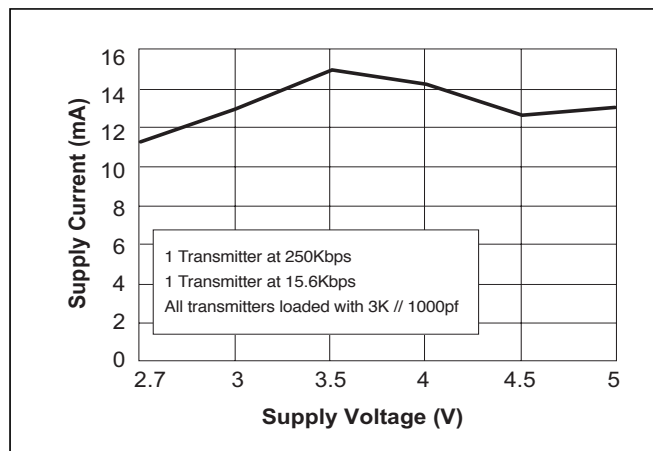


Figure 4. Supply Current vs Supply Voltage.

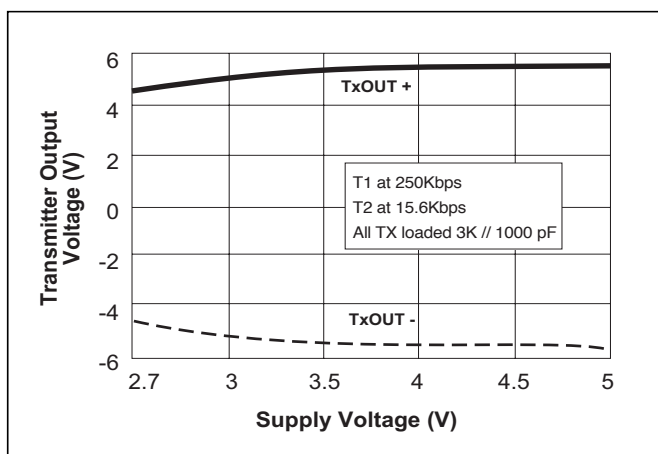


Figure 5. Transmitter Output Voltage vs Supply Voltage.

PIN DESCRIPTION

| NAME | FUNCTION | PIN NUMBER | | |
|--------------------------|--|------------|---------------|----------|
| | | SP3222EB | | SP3232EB |
| | | DIP/SO | SSOP TSSOP | |
| $\overline{\text{EN}}$ | Receiver Enable. Apply logic LOW for normal operation. Apply logic HIGH to disable the receiver outputs (high-Z state). | 1 | 1 | - |
| C1+ | Positive terminal of the voltage doubler charge-pump capacitor. | 2 | 2 | 1 |
| V+ | +5.5V generated by the charge pump. | 3 | 3 | 2 |
| C1- | Negative terminal of the voltage doubler charge-pump capacitor. | 4 | 4 | 3 |
| C2+ | Positive terminal of the inverting charge-pump capacitor. | 5 | 5 | 4 |
| C2- | Negative terminal of the inverting charge-pump capacitor. | 6 | 6 | 5 |
| V- | -5.5V generated by the charge pump. | 7 | 7 | 6 |
| T1OUT | RS-232 driver output. | 15 | 17 | 14 |
| T2OUT | RS-232 driver output. | 8 | 8 | 7 |
| R1IN | RS-232 receiver input. | 14 | 16 | 13 |
| R2IN | RS-232 receiver input. | 9 | 9 | 8 |
| R1OUT | TTL/CMOS receiver output. | 13 | 15 | 12 |
| R2OUT | TTL/CMOS receiver output. | 10 | 10 | 9 |
| T1IN | TTL/CMOS driver input. | 12 | 13 | 11 |
| T2IN | TTL/CMOS driver input. | 11 | 12 | 10 |
| GND | Ground. | 16 | 18 | 15 |
| V _{CC} | +3.0V to +5.5V supply voltage | 17 | 19 | 16 |
| $\overline{\text{SHDN}}$ | Shutdown Control Input. Drive HIGH for normal device operation. Drive LOW to shutdown the drivers (high-Z output) and the on-board power supply. | 18 | 20 | - |
| N.C. | No Connect. | - | 11, 14 | - |

Table 1. Device Pin Description

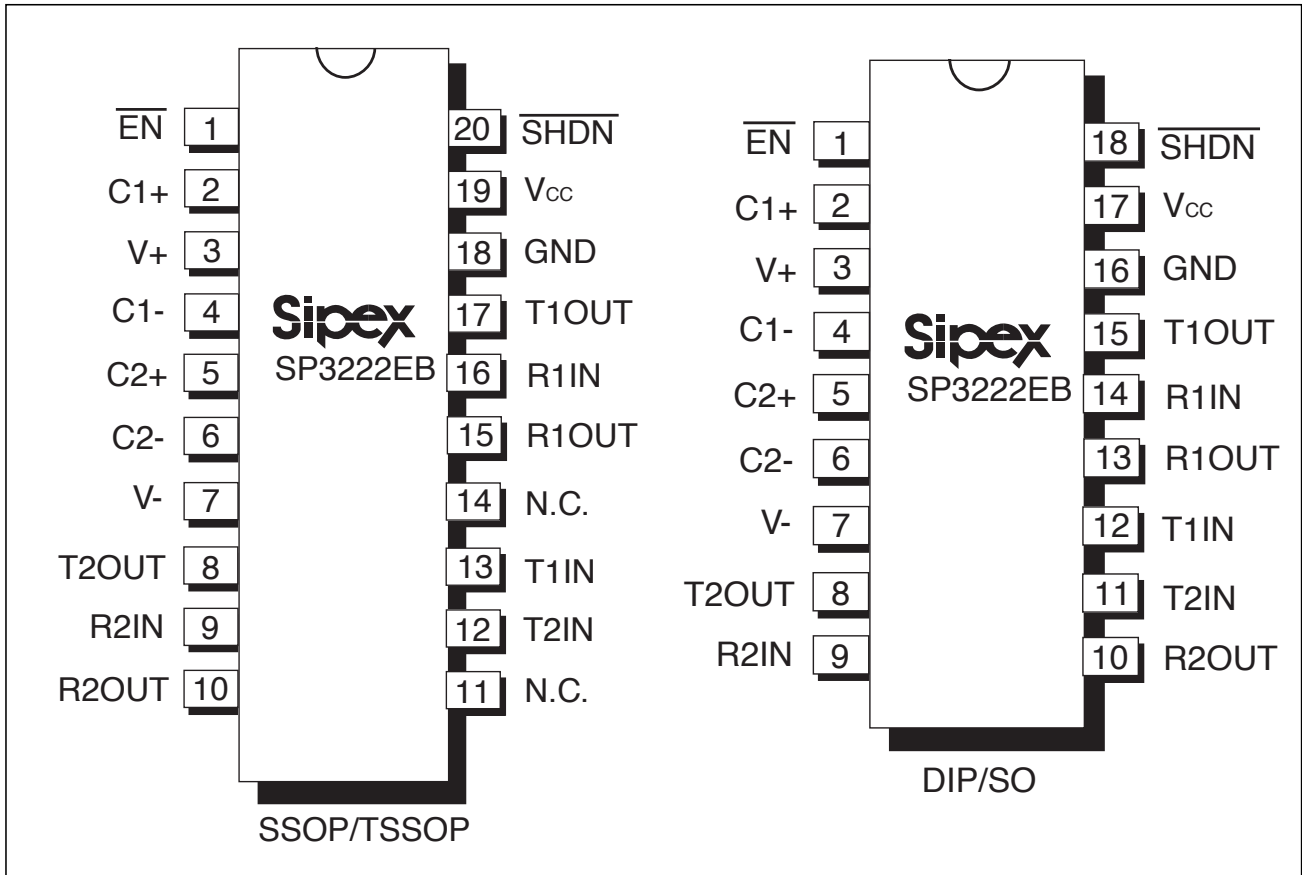


Figure 6. Pinout Configurations for the SP3222EB

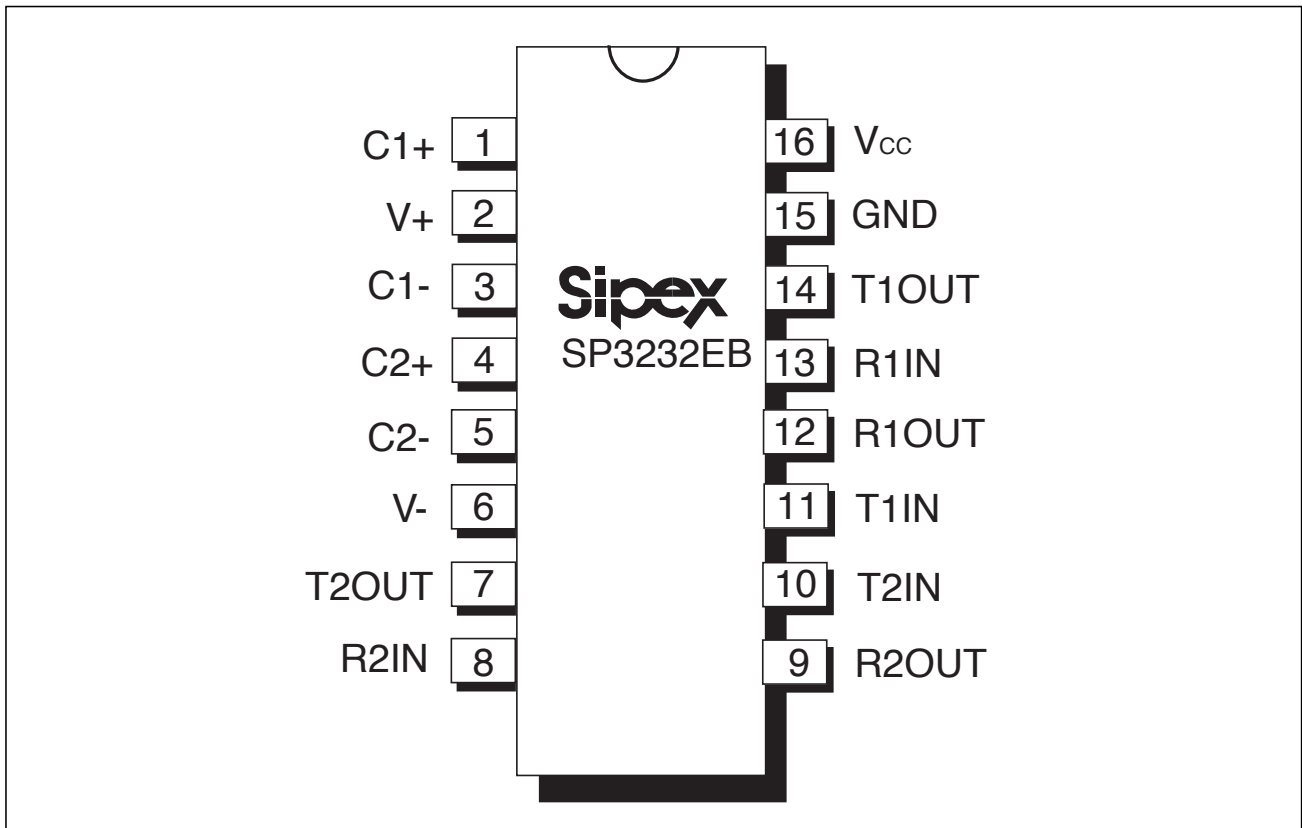


Figure 7. Pinout Configuration for the SP3232EB

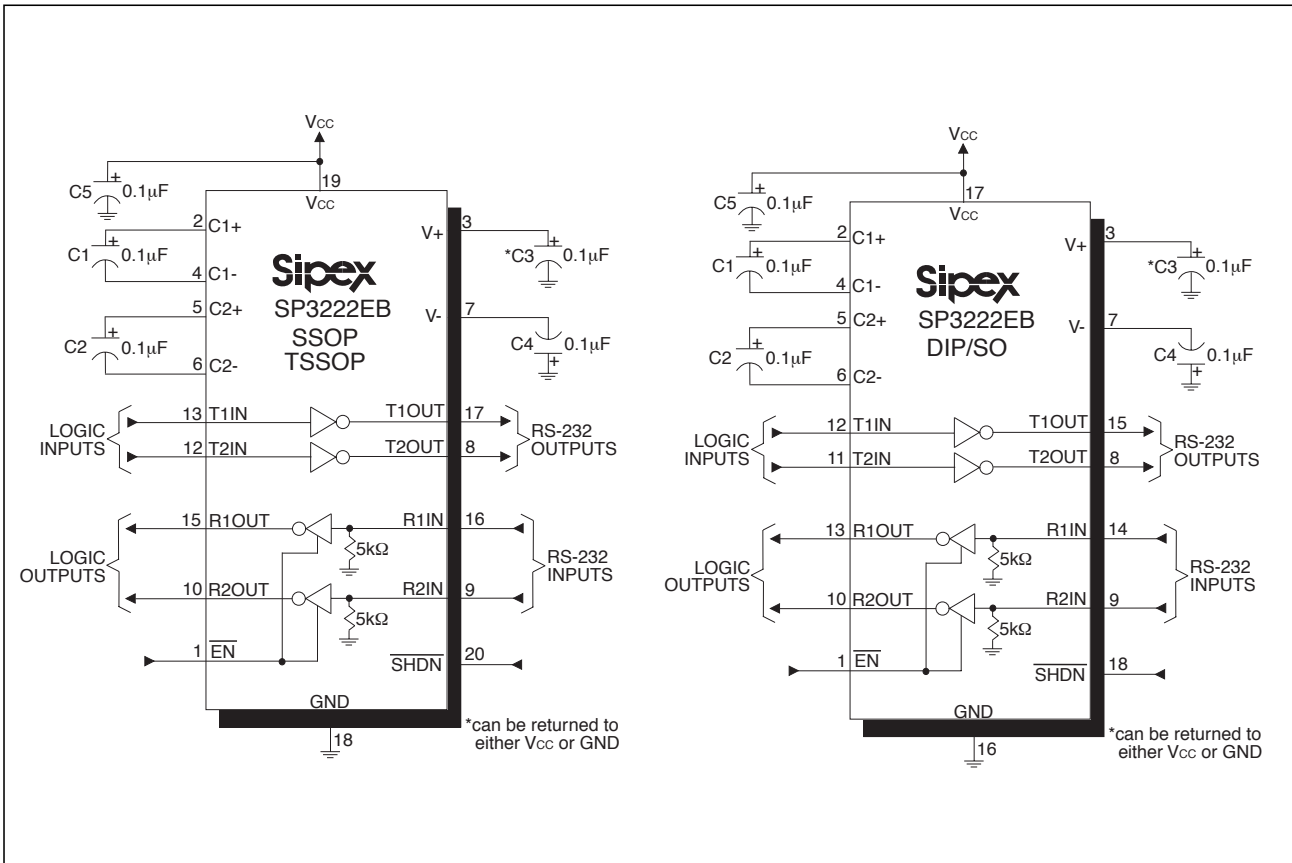


Figure 8. SP3222EB Typical Operating Circuits

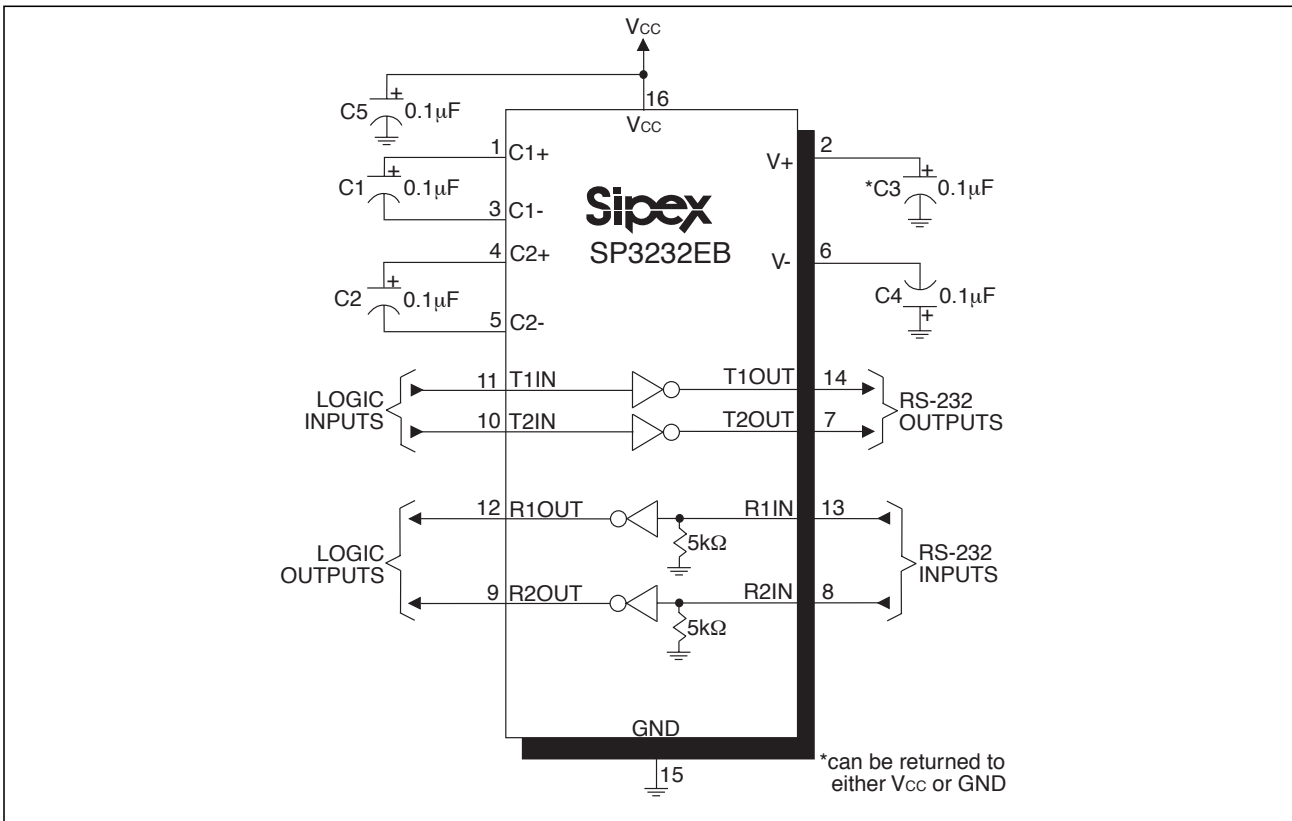


Figure 9. SP3232EB Typical Operating Circuit

DESCRIPTION

The **SP3222EB/3232EB** transceivers meet the EIA/TIA-232 and V.28/V.24 communication protocols and can be implemented in battery-powered, portable, or hand-held applications such as notebook or palmtop computers. The **SP3222EB/3232EB** devices all feature Sipex's proprietary on-board charge pump circuitry that generates $2 \times V_{CC}$ for RS-232 voltage levels from a single +3.0V to +5.5V power supply. This series is ideal for +3.3V-only systems, mixed +3.3V to +5.5V systems, or +5.0V-only systems that require true RS-232 performance. The **SP3222EB/3232EB** series have drivers that operate at a typical data rate of 250kbps fully loaded.

The **SP3222EB** and **SP3232EB** are 2-driver/2-receiver devices ideal for portable or hand-held applications. The **SP3222EB** features a $1\mu\text{A}$ shutdown mode that reduces power consumption and extends battery life in portable systems. Its receivers remain active in shutdown mode, allowing external devices such as modems to be monitored using only $1\mu\text{A}$ supply current.

THEORY OF OPERATION

The **SP3222EB/3232EB** series are made up of three basic circuit blocks: 1. Drivers, 2. Receivers, and 3. the Sipex proprietary charge pump.

Drivers

The drivers are inverting level transmitters that convert TTL or CMOS logic levels to $\pm 5.0\text{V}$ EIA/TIA-232 levels inverted relative to the input logic levels. Typically, the RS-232 output voltage swing is $\pm 5.5\text{V}$ with no load and at least $\pm 5\text{V}$ minimum fully loaded. The driver outputs are protected against infinite short-circuits to ground without degradation in reliability. Driver outputs will meet EIA/TIA-562 levels of $\pm 3.7\text{V}$ with supply voltages as low as 2.7V .

The drivers can guarantee a data rate of 250kbps fully loaded with $3\text{K}\Omega$ in parallel with 1000pF , ensuring compatibility with PC-to-PC communication software.

The slew rate of the driver output is internally limited to a maximum of $30\text{V}/\mu\text{s}$ in order to meet the EIA standards (EIA RS-232D 2.1.7, Paragraph 5). The transition of the loaded output from HIGH to LOW also meets the monotonicity requirements of the standard.

Figure 10 shows a loopback test circuit used to the RS-232 drivers. *Figure 11* shows the test results of the loopback circuit with all drivers active at 120kbps with RS-232 loads in parallel with 1000pF capacitors. *Figure 12* shows the test results where one driver was active at 250kbps and all drivers loaded with an RS-232 receiver in parallel with a 1000pF capacitor. A solid RS-232 data transmission rate of 250kbps provides compatibility with many designs in personal computer peripherals and LAN applications.

The **SP3222EB** driver's output stages are turned off (tri-state) when the device is in shutdown mode. When the power is off, the **SP3222EB** device permits the outputs to be driven up to $\pm 12\text{V}$. The driver's inputs do not have pull-up resistors. Designers should connect unused inputs to V_{CC} or GND.

In the shutdown mode, the supply current falls to less than $1\mu\text{A}$, where $\overline{\text{SHDN}} = \text{LOW}$. When the **SP3222EB** device is shut down, the device's driver outputs are disabled (tri-stated) and the charge pumps are turned off with $V+$ pulled down to V_{CC} and $V-$ pulled to GND. The time required to exit shutdown is typically $100\mu\text{s}$. Connect $\overline{\text{SHDN}}$ to V_{CC} if the shutdown mode is not used.

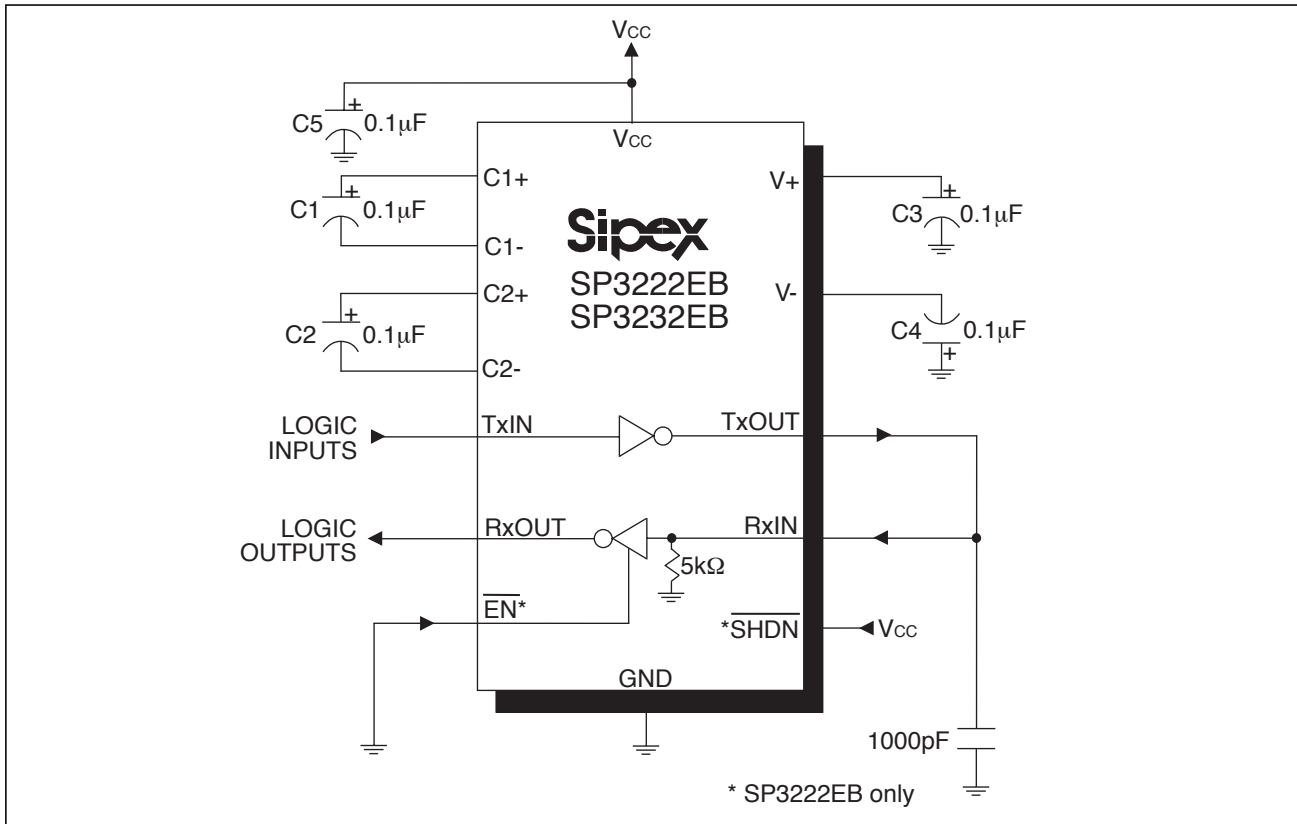


Figure 10. SP3222EB/3232EB Driver Loopback Test Circuit

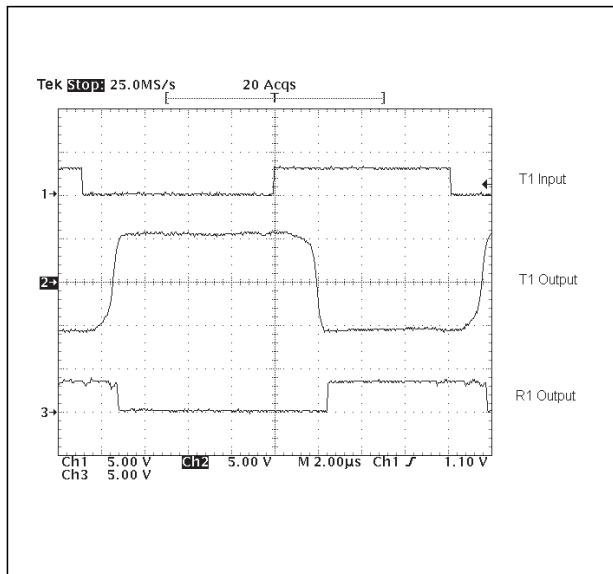


Figure 11. Driver Loopback Test Results at 120kbps

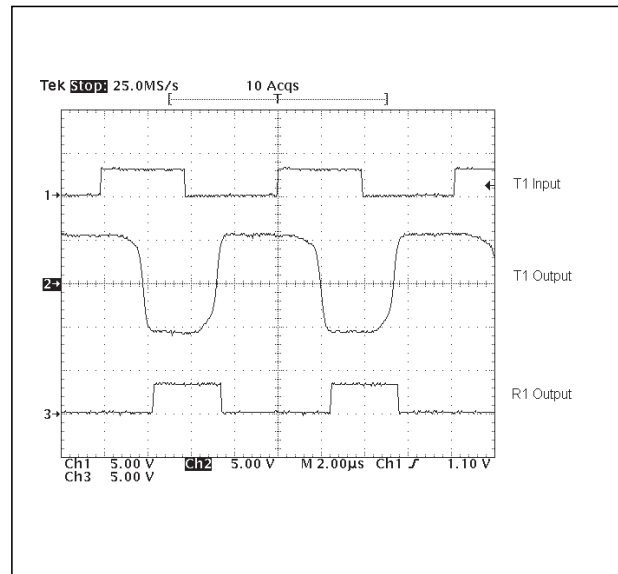


Figure 12. Driver Loopback Test Results at 250kbps

Receivers

The receivers convert EIA/TIA-232 levels to TTL or CMOS logic output levels. The SP3222EB receivers have an inverting tri-state output. These receiver outputs (RxOUT) are tri-stated when the enable control $\overline{\text{EN}} = \text{HIGH}$. In the shutdown mode, the receivers can be active or inactive. $\overline{\text{EN}}$ has no effect on TxOUT. The truth table logic of the **SP3222EB** driver and receiver outputs can be found in *Table 2*.

Since receiver input is usually from a transmission line where long cable lengths and system interference can degrade the signal, the inputs have a typical hysteresis margin of 300mV. This ensures that the receiver is virtually immune to noisy transmission lines. Should an input be left unconnected, a 5k Ω pulldown resistor to ground will commit the output of the receiver to a HIGH state.

Charge Pump

The charge pump is a **Sipex**-patented design (5,306,954) and uses a unique approach compared to older less-efficient designs. The charge pump still requires four external capacitors, but uses a four-phase voltage shifting technique to attain symmetrical 5.5V power supplies. The internal power supply consists of a regulated dual charge pump that provides output voltages 5.5V regardless of the input voltage (V_{CC}) over the +3.0V to +5.5V range.

In most circumstances, decoupling the power supply can be achieved adequately using a 0.1 μF bypass capacitor at C5 (refer to *Figures 8 and 9*).

| $\overline{\text{SHDN}}$ | $\overline{\text{EN}}$ | TxOUT | RxOUT |
|--------------------------|------------------------|-----------|-----------|
| 0 | 0 | Tri-state | Active |
| 0 | 1 | Tri-state | Tri-state |
| 1 | 0 | Active | Active |
| 1 | 1 | Active | Tri-state |

Table 2. SP3222EB Truth Table Logic for Shutdown and Enable Control

In applications that are sensitive to power-supply noise, decouple V_{CC} to ground with a capacitor of the same value as charge-pump capacitor C1. Physically connect bypass capacitors as close to the IC as possible.

The charge pumps operate in a discontinuous mode using an internal oscillator. If the output voltages are less than a magnitude of 5.5V, the charge pumps are enabled. If the output voltage exceed a magnitude of 5.5V, the charge pumps are disabled. This oscillator controls the four phases of the voltage shifting. A description of each phase follows.

Phase 1

— V_{SS} charge storage — During this phase of the clock cycle, the positive side of capacitors C_1 and C_2 are initially charged to V_{CC} . C_1^+ is then switched to GND and the charge in C_1^- is transferred to C_2^- . Since C_2^+ is connected to V_{CC} , the voltage potential across capacitor C_2 is now 2 times V_{CC} .

Phase 2

— V_{SS} transfer — Phase two of the clock connects the negative terminal of C_2 to the V_{SS} storage capacitor and the positive terminal of C_2 to GND. This transfers a negative generated voltage to C_3 . This generated voltage is regulated to a minimum voltage of -5.5V. Simultaneous with the transfer of the voltage to C_3 , the positive side of capacitor C_1 is switched to V_{CC} and the negative side is connected to GND.

Phase 3

— V_{DD} charge storage — The third phase of the clock is identical to the first phase — the charge transferred in C_1 produces $-V_{\text{CC}}$ in the negative terminal of C_1 , which is applied to the negative side of capacitor C_2 . Since C_2^+ is at V_{CC} , the voltage potential across C_2 is 2 times V_{CC} .

Phase 4

— V_{DD} transfer — The fourth phase of the clock connects the negative terminal of C_2 to GND, and transfers this positive generated voltage across C_2 to C_4 , the V_{DD} storage capacitor.

This voltage is regulated to +5.5V. At this voltage, the internal oscillator is disabled. Simultaneous with the transfer of the voltage to C_4 , the positive side of capacitor C_1 is switched to V_{CC} and the negative side is connected to GND, allowing the charge pump cycle to begin again. The charge pump cycle will continue as long as the operational conditions for the internal oscillator are present.

Since both V^+ and V^- are separately generated from V_{CC} ; in a no-load condition V^+ and V^- will be symmetrical. Older charge pump approaches that generate V^- from V^+ will show a decrease in the magnitude of V^- compared to V^+ due to the inherent inefficiencies in the design.

The clock rate for the charge pump typically operates at 250kHz. The external capacitors can be as low as 0.1 μ F with a 16V breakdown voltage rating.

ESD Tolerance

The **SP3222EB/3232EB** series incorporates ruggedized ESD cells on all driver output and receiver input pins. The ESD structure is improved over our previous family for more rugged applications and environments sensitive to electrostatic discharges and associated transients. The improved ESD tolerance is at least ± 15 kV without damage nor latch-up.

There are different methods of ESD testing applied:

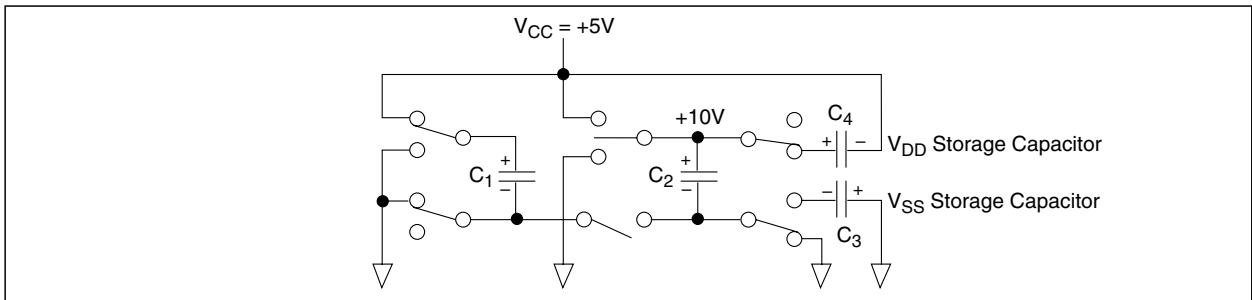
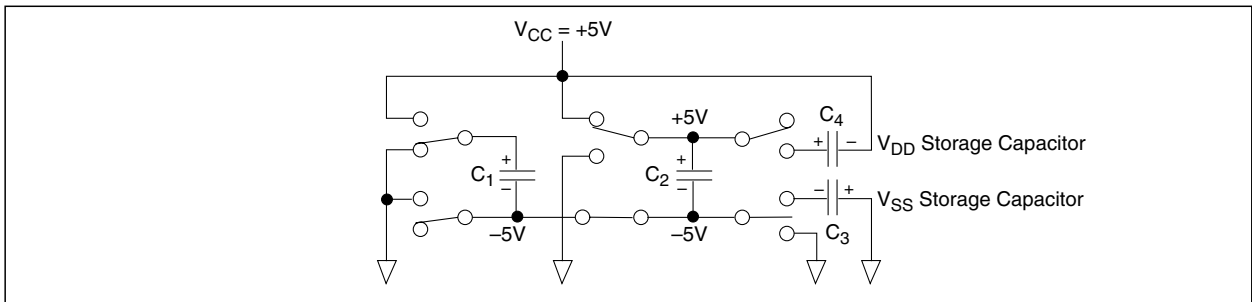
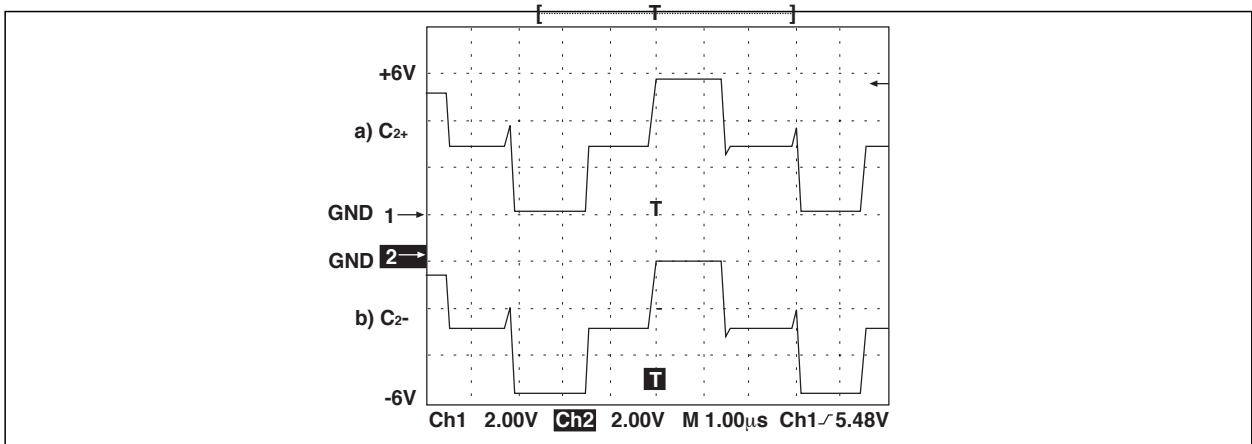
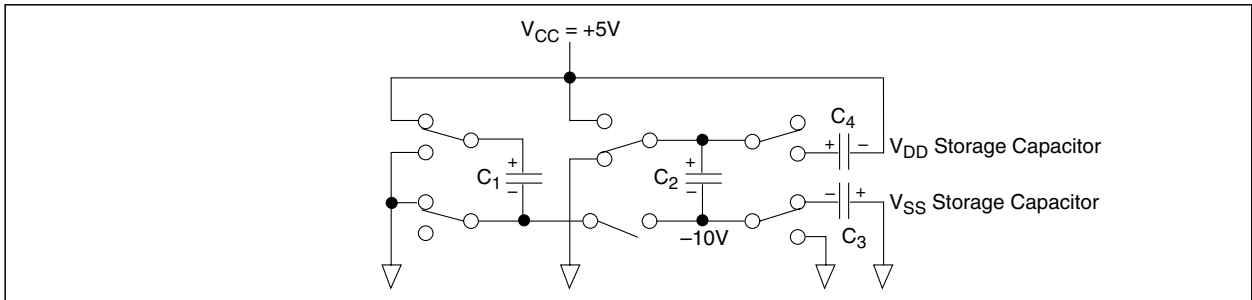
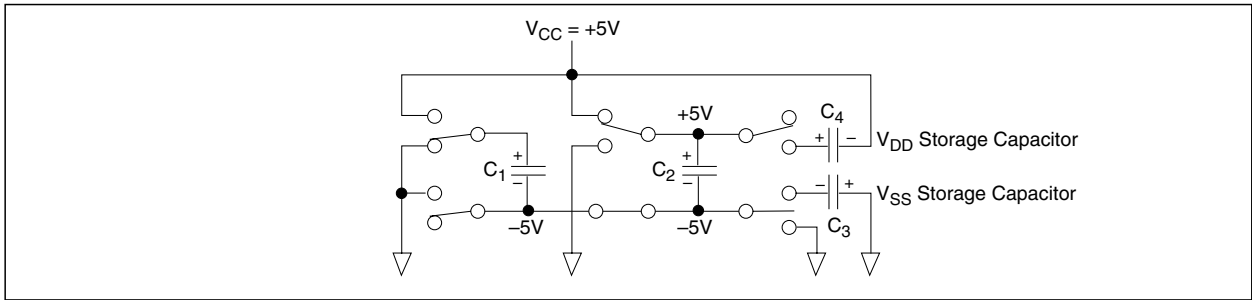
- a) MIL-STD-883, Method 3015.7
- b) IEC1000-4-2 Air-Discharge
- c) IEC1000-4-2 Direct Contact

The Human Body Model has been the generally accepted ESD testing method for semiconductors. This method is also specified in MIL-STD-883, Method 3015.7 for ESD testing. The premise of this ESD test is to simulate the human body's potential to store electrostatic energy and discharge it to an integrated circuit.

The simulation is performed by using a test model as shown in *Figure 18*. This method will test the IC's capability to withstand an ESD transient during normal handling such as in manufacturing areas where the ICs tend to be handled frequently.

The IEC-1000-4-2, formerly IEC801-2, is generally used for testing ESD on equipment and systems. For system manufacturers, they must guarantee a certain amount of ESD protection since the system itself is exposed to the outside environment and human presence. The premise with IEC1000-4-2 is that the system is required to withstand an amount of static electricity when ESD is applied to points and surfaces of the equipment that are accessible to personnel during normal usage. The transceiver IC receives most of the ESD current when the ESD source is applied to the connector pins. The test circuit for IEC1000-4-2 is shown on *Figure 19*. There are two methods within IEC1000-4-2, the Air Discharge method and the Contact Discharge method.

With the Air Discharge Method, an ESD voltage is applied to the equipment under test (EUT) through air. This simulates an electrically charged person ready to connect a cable onto the rear of the system only to find an unpleasant zap just before the person touches the back panel. The high energy potential on the person discharges through an arcing path to the rear panel of the system before he or she even touches the system. This energy, whether discharged directly or through air, is predominantly a function of the discharge current rather than the discharge voltage. Variables with an air discharge such as approach speed of the object carrying the ESD potential to the system and humidity will tend to change the discharge current. For example, the rise time of the discharge current varies with the approach speed.



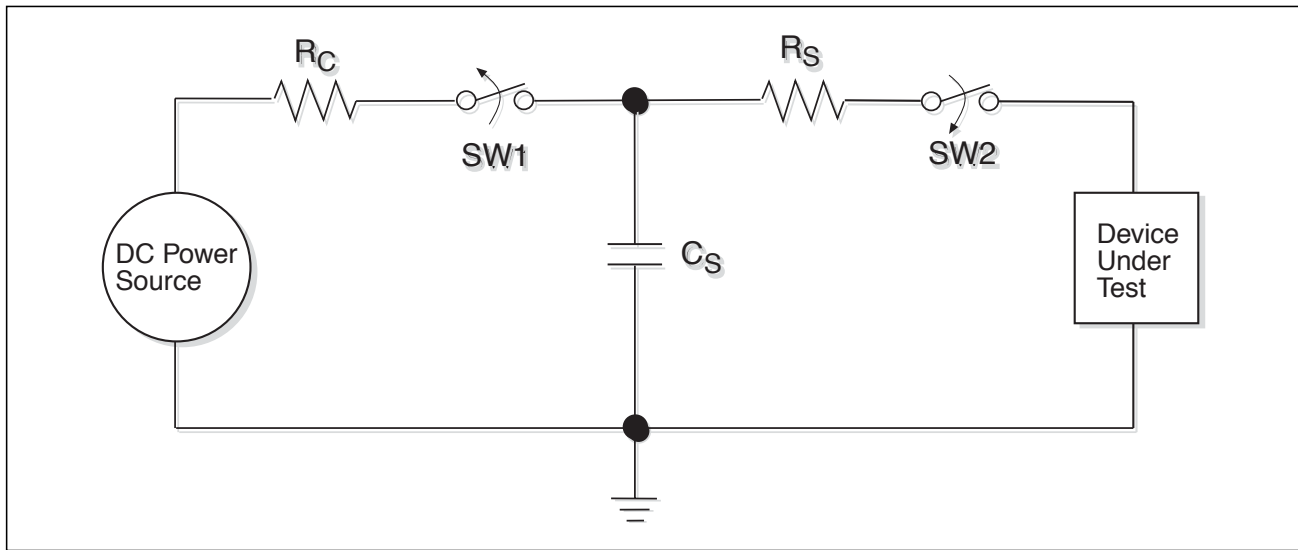


Figure 18. ESD Test Circuit for Human Body Model

The Contact Discharge Method applies the ESD current directly to the EUT. This method was devised to reduce the unpredictability of the ESD arc. The discharge current rise time is constant since the energy is directly transferred without the air-gap arc. In situations such as hand held systems, the ESD charge can be directly discharged to the equipment from a person already holding the equipment. The current is transferred on to the keypad or the serial port of the equipment directly and then travels through the PCB and finally to the IC.

The circuit models in Figures 18 and 19 represent the typical ESD testing circuits used for all three methods. The C_S is initially charged with the DC power supply when the first switch (SW1) is on. Now that the capacitor is charged, the second switch (SW2) is on while SW1 switches off. The voltage stored in the capacitor is then applied through R_S , the current limiting resistor, onto the device under test (DUT). In ESD tests, the SW2 switch is pulsed so that the device under test receives a duration of voltage.

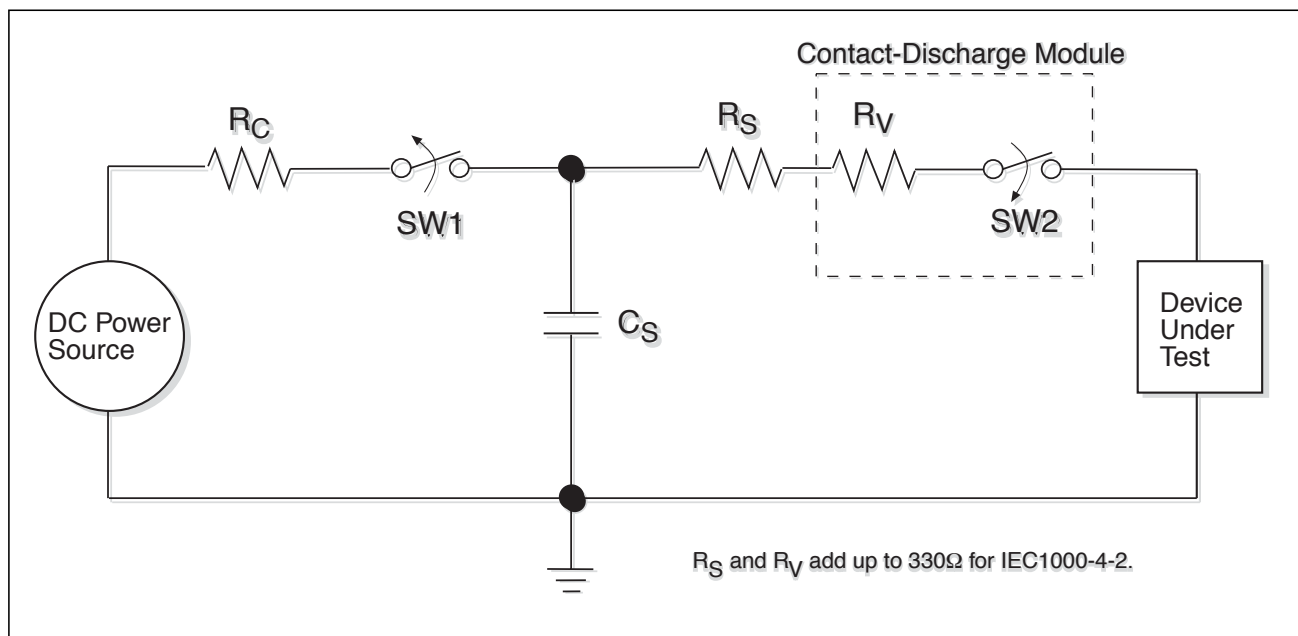


Figure 19. ESD Test Circuit for IEC1000-4-2

For the Human Body Model, the current limiting resistor (R_s) and the source capacitor (C_s) are $1.5k\Omega$ and $100pF$, respectively. For IEC-1000-4-2, the current limiting resistor (R_s) and the source capacitor (C_s) are 330Ω and $150pF$, respectively.

The higher C_s value and lower R_s value in the IEC1000-4-2 model are more stringent than the Human Body Model. The larger storage capacitor injects a higher voltage to the test point when SW2 is switched on. The lower current limiting resistor increases the current charge onto the test point.

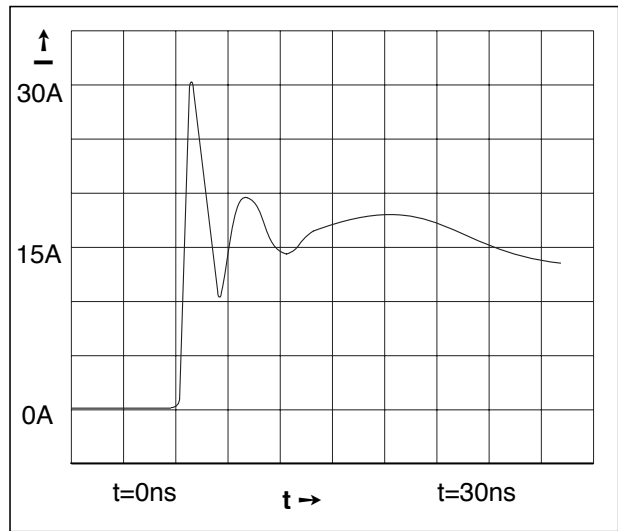
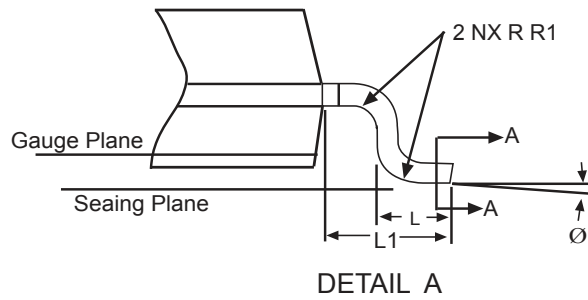
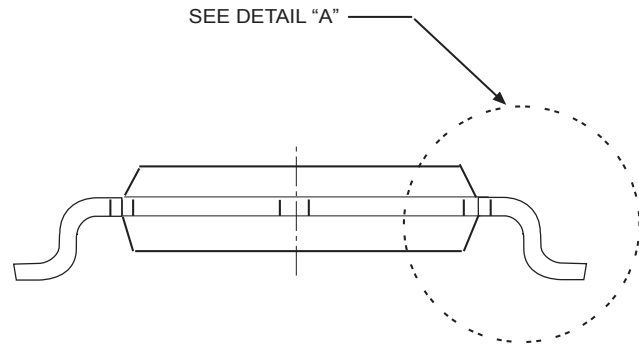
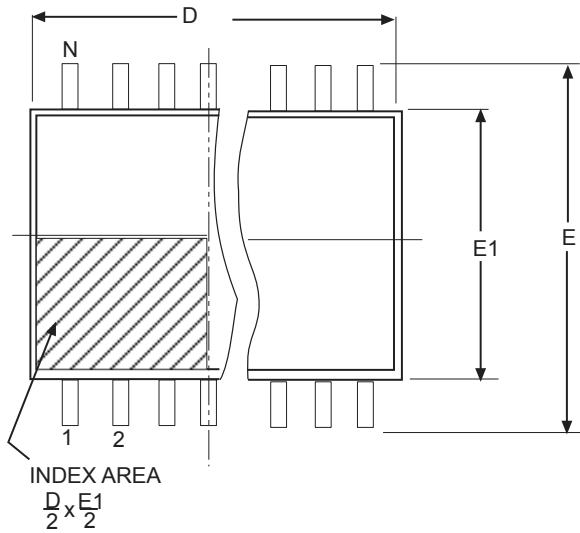


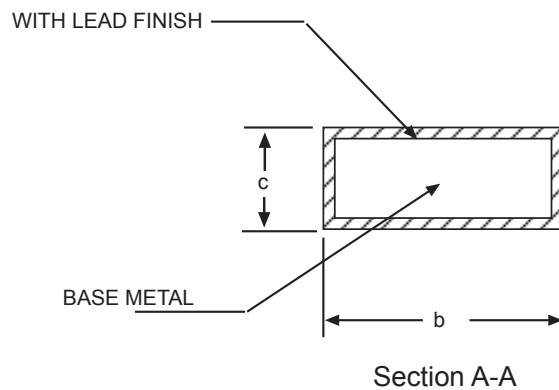
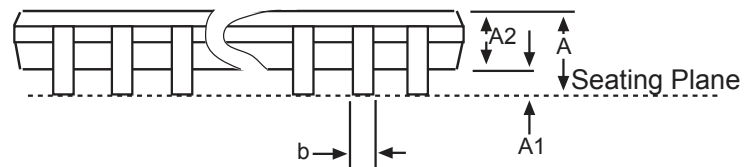
Figure 20. ESD Test Waveform for IEC1000-4-2

| Device Pin Tested | Human Body Model | IEC1000-4-2 | | |
|-------------------|------------------|---------------|----------------|-------|
| | | Air Discharge | Direct Contact | Level |
| Driver Outputs | $\pm 15kV$ | $\pm 15kV$ | $\pm 8kV$ | 4 |
| Receiver Inputs | $\pm 15kV$ | $\pm 15kV$ | $\pm 8kV$ | 4 |

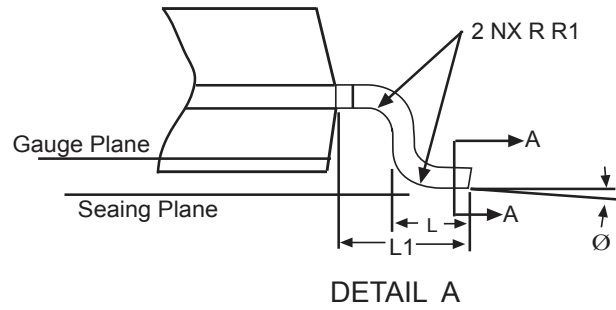
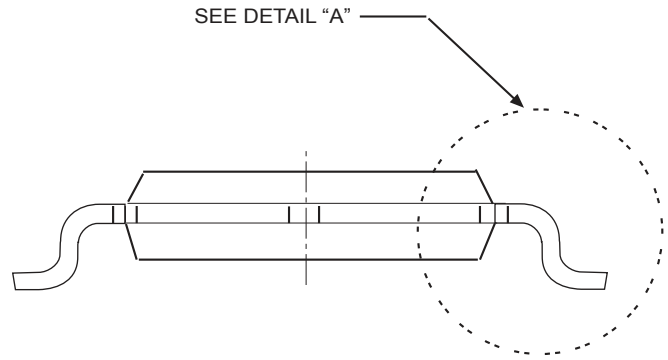
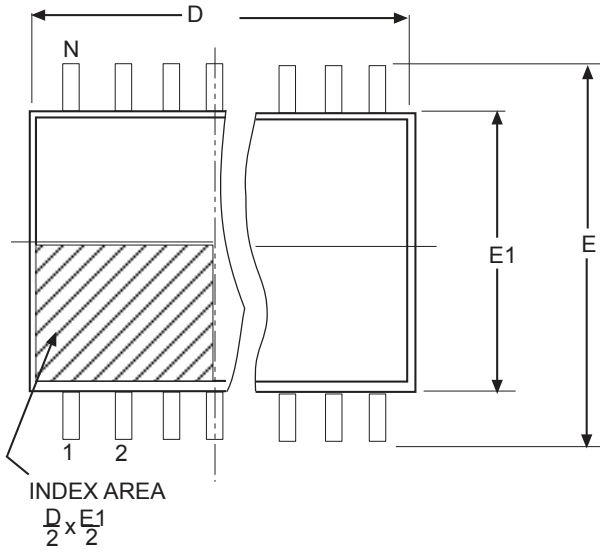
Table 3. Transceiver ESD Tolerance Levels



| 20 Pin SSOP JEDEC MO-153 (AE) Variation | | | |
|---|----------|------|------|
| SYMBOL | MIN | NOM | MAX |
| A | - | - | 2 |
| A1 | 0.05 | - | - |
| A2 | 1.65 | 1.75 | 1.85 |
| b | 0.22 | - | 0.38 |
| c | 0.09 | - | 0.25 |
| D | 6.9 | 7.2 | 7.5 |
| E | 7.4 | 7.8 | 8.2 |
| E1 | 5 | 5.3 | 5.6 |
| L | 0.55 | 0.75 | 0.95 |
| L1 | 1.25 REF | | |
| Ø | 0° | 4° | 8° |

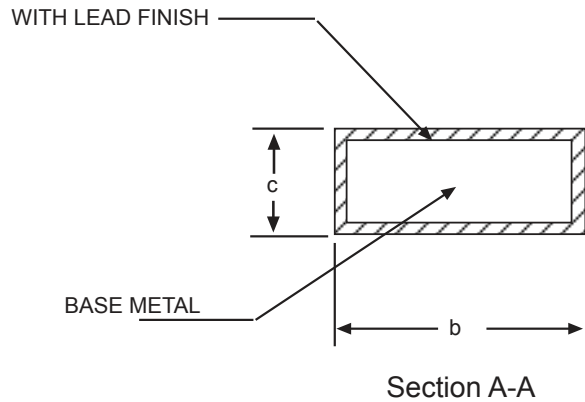
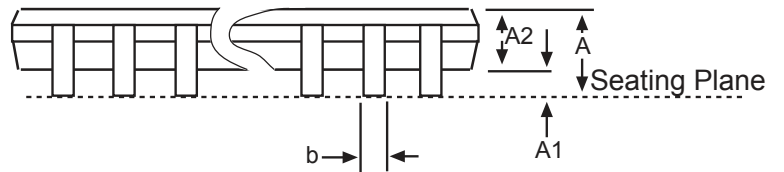


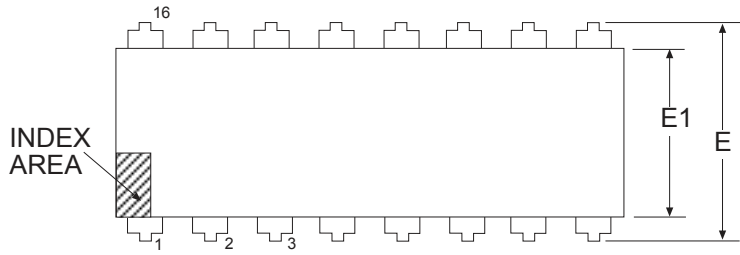
20 PIN SSOP



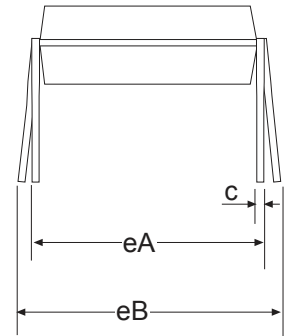
| 16 Pin SSOP JEDEC MO-153 (AC) Variation | | | |
|---|----------|------|------|
| SYMBOL | MIN | NOM | MAX |
| A | - | - | 2 |
| A1 | 0.05 | - | - |
| A2 | 1.65 | 1.75 | 1.85 |
| b | 0.22 | - | 0.38 |
| c | 0.09 | - | 0.25 |
| D | 5.9 | 6.2 | 6.5 |
| E | 7.4 | 7.8 | 8.2 |
| E1 | 5 | 5.3 | 5.6 |
| L | 0.55 | 0.75 | 0.95 |
| L1 | 1.25 REF | | |
| Ø | 0° | 4° | 8° |

Note: Dimensions in (mm)

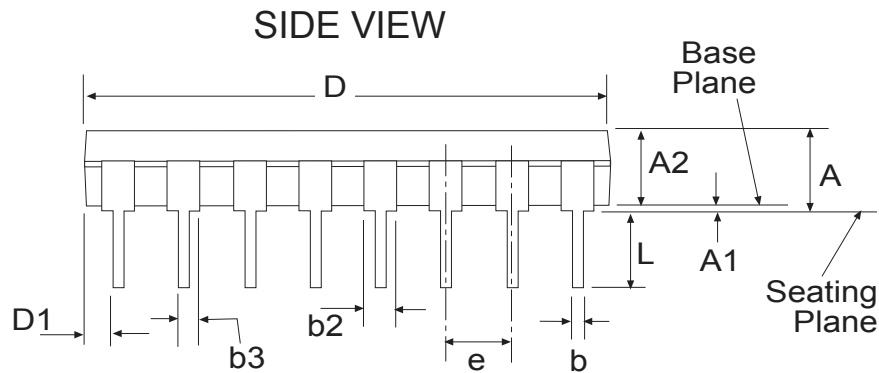




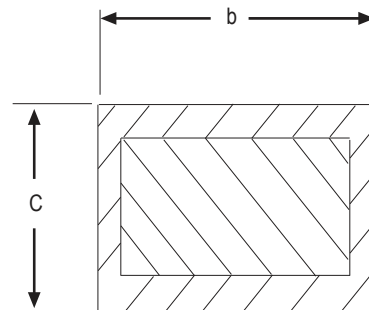
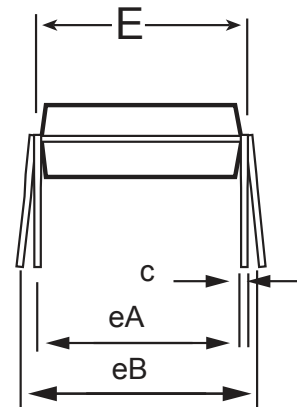
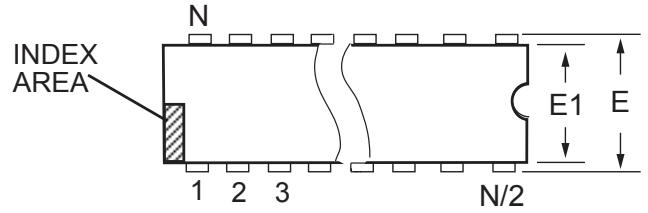
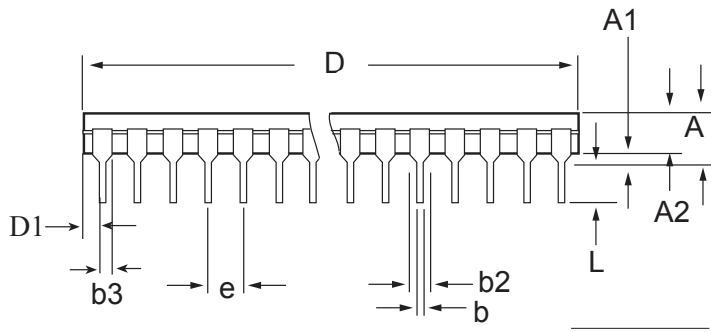
TOP VIEW



FRONT VIEW

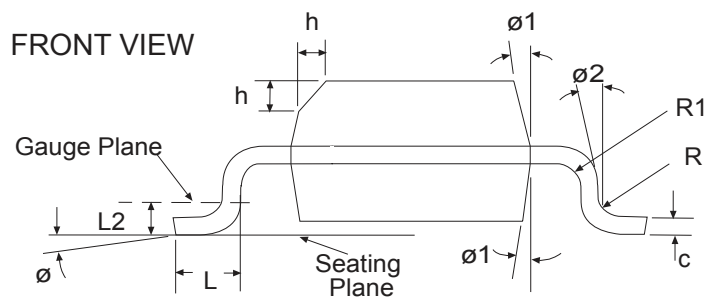
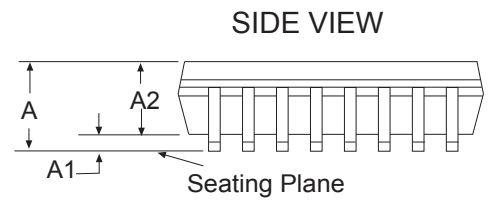
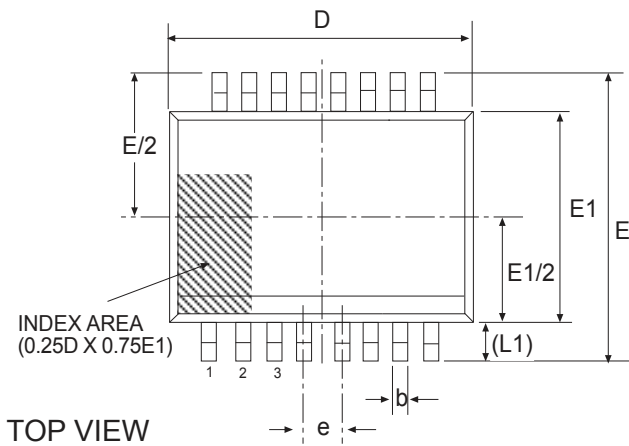


| PDIP JEDEC MS-001 VARIATION BB N = 16 Pins | | | | | | |
|--|--|-------|-------|--|-------|-------|
| SYMBOL | Dimensions in Inches: Controlling Dimension | | | Dimensions in Millimeters Conversion Factor: 1 Inch = 25.40 mm | | |
| | MIN | NOM | MAX | MIN | NOM | MAX |
| A | - | - | 0.210 | - | - | 5.33 |
| A1 | 0.015 | - | - | 0.38 | - | - |
| A2 | 0.115 | 0.130 | 0.195 | 2.92 | 3.30 | 4.95 |
| b | 0.014 | 0.018 | 0.022 | 0.36 | 0.46 | 0.56 |
| b2 | 0.045 | 0.060 | 0.070 | 1.14 | 1.52 | 1.78 |
| b3 | 0.030 | 0.039 | 0.045 | 0.76 | 0.99 | 1.14 |
| c | 0.008 | 0.010 | 0.014 | 0.20 | 0.25 | 0.36 |
| D1 | 0.005 | - | - | 0.00 | - | - |
| E | 0.300 | 0.310 | 0.325 | 7.62 | 7.87 | 8.26 |
| E1 | 0.240 | 0.250 | 0.280 | 6.10 | 6.35 | 7.11 |
| e | 0.100 BSC | | | 0.004 BSC | | |
| eA | 0.300 BSC | | | 0.012 BSC | | |
| eB | - | - | 0.430 | - | - | 10.92 |
| L | 0.115 | 0.130 | 0.150 | 2.92 | 3.30 | 3.81 |
| D | 0.735 | 0.755 | 0.775 | 18.67 | 19.18 | 19.69 |
| SIPEX Pkg Signoff Date/Rev: | | | | JL Nov21-05/ Rev A | | |

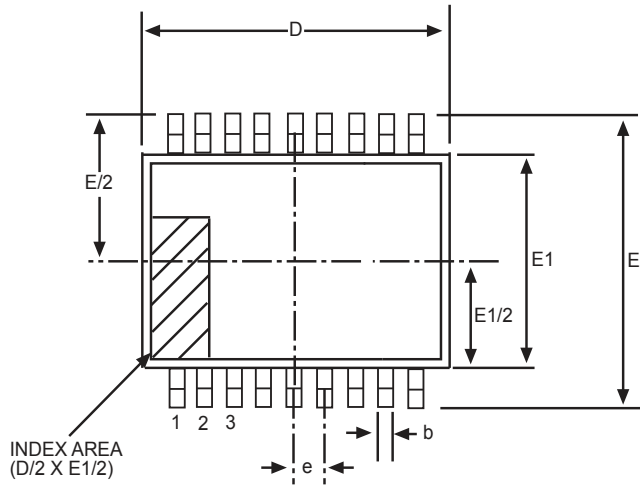


| 18 PIN PDIP JEDEC MS-001 (AC) Variation | | | |
|---|----------|-------|-------|
| SYMBOL | MIN | NOM | MAX |
| A | - | - | 0.21 |
| A1 | 0.15 | - | - |
| A2 | 0.115 | 0.13 | 0.195 |
| b | 0.014 | 0.018 | 0.022 |
| b2 | 0.045 | 0.06 | 0.07 |
| b3 | 0.3 | 0.039 | 0.045 |
| c | 0.008 | 0.01 | 0.014 |
| D | 0.88 | 0.9 | 0.92 |
| D1 | 0.005 | - | - |
| E | 0.3 | 0.31 | 0.325 |
| E1 | 0.24 | 0.25 | 0.28 |
| e | .100 BSC | | |
| eA | .300 BSC | | |
| eB | - | - | 0.43 |
| L | 0.115 | 0.13 | 0.15 |

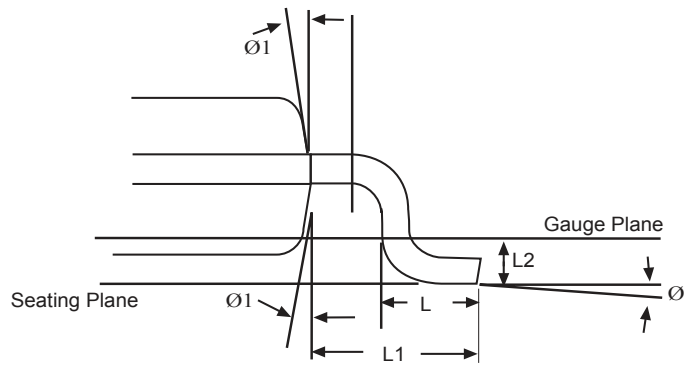
Note: Dimensions in (mm)



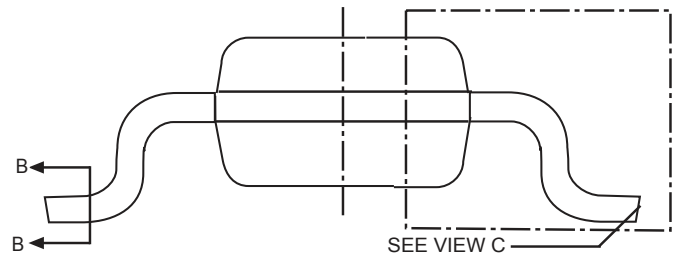
| 16 PIN WSOIC | | JEDEC MS-013 | | Variation AA | | |
|-----------------------------|---|--------------|------|---|-----|-------|
| SYMBOL | Dimensions in Millimeters: Controlling Dimension | | | Dimensions in Inches Conversion Factor: 1 Inch = 25.40 mm | | |
| | MIN | NOM | MAX | MIN | NOM | MAX |
| A | 2.35 | - | 2.65 | 0.093 | - | 0.104 |
| A1 | 0.10 | - | 0.30 | 0.004 | - | 0.012 |
| A2 | 2.05 | - | 2.55 | 0.081 | - | 0.100 |
| b | 0.31 | - | 0.51 | 0.012 | - | 0.020 |
| c | 0.20 | - | 0.33 | 0.008 | - | 0.013 |
| E | 10.30 BSC | | | 0.406 BSC | | |
| E1 | 7.50 BSC | | | 0.295 BSC | | |
| e | 1.27 BSC | | | 0.050 BSC | | |
| h | 0.25 | - | 0.75 | 0.010 | - | 0.030 |
| L | 0.40 | - | 1.27 | 0.016 | - | 0.050 |
| L1 | 1.40 REF | | | 0.055 REF | | |
| L2 | 0.25 BSC | | | 0.010 BSC | | |
| R | 0.07 | - | - | 0.003 | - | - |
| R1 | 0.07 | - | - | 0.003 | - | - |
| ϕ | 0° | - | 8° | 0° | - | 8° |
| $\phi 1$ | 5° | - | 15° | 5° | - | 15° |
| $\phi 2$ | 0° | - | - | 0° | - | - |
| D | 10.30 REF | | | 0.405 REF | | |
| SIPEX Pkg Signoff Date/Rev: | | | | JL Oct11-05/ Rev A | | |



TOP VIEW

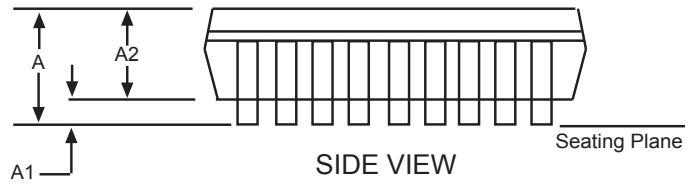


VIEW C

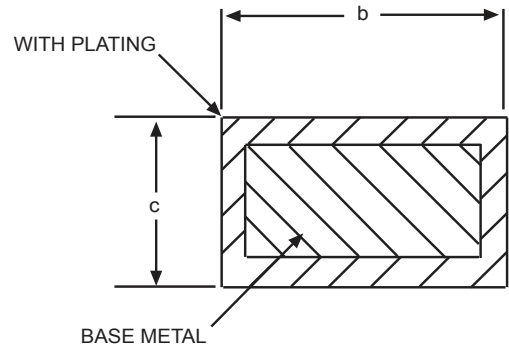


SEE VIEW C

| 18 Pin WSOIC JEDEC MS-013 (AB) Variation | | | |
|---|-----------|-----|-------|
| SYMBOL | MIN | NOM | MAX |
| A | 2.350 | - | 2.650 |
| A1 | 0.100 | - | 0.300 |
| A2 | 2.050 | - | 2.550 |
| b | 0.310 | - | 0.510 |
| c | 0.200 | - | 0.330 |
| D | 11.55 BSC | | |
| E | 10.30 DSC | | |
| E1 | 7.50 BSC | | |
| e | 1.27 BSC | | |
| L | 0.400 | - | 1.270 |
| L1 | 1.04 REF | | |
| L2 | 0.25 BSC | | |
| ∅ | 0° | - | 8° |
| ∅1 | 5° | - | 15° |

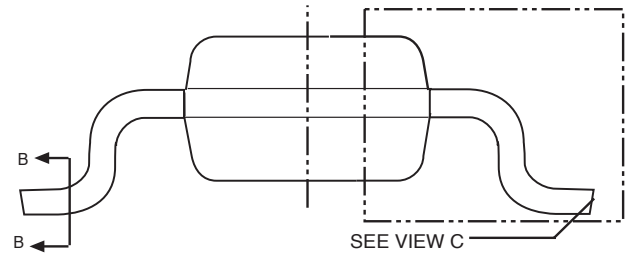
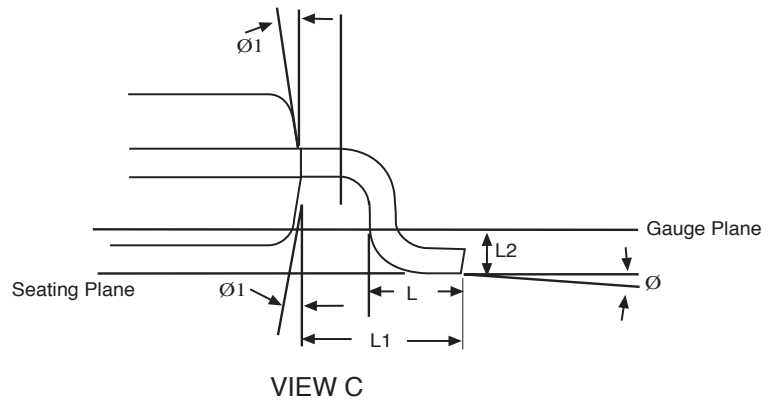
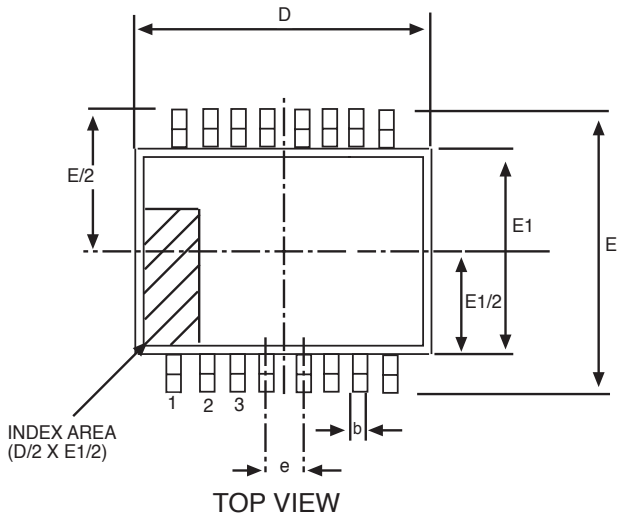


SIDE VIEW

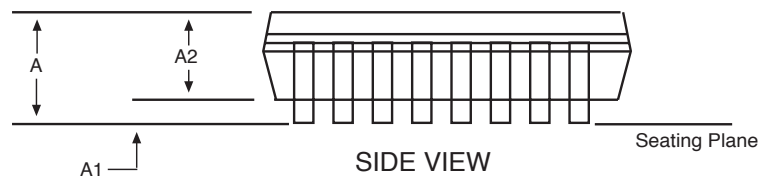


SECTION B-B

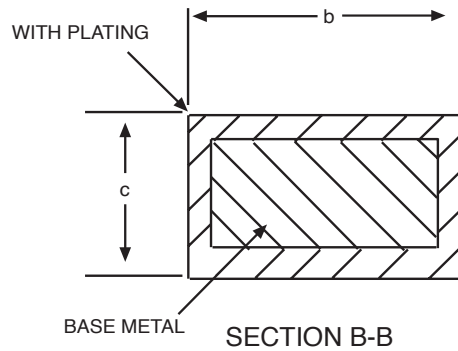
Note: Dimensions in (mm)

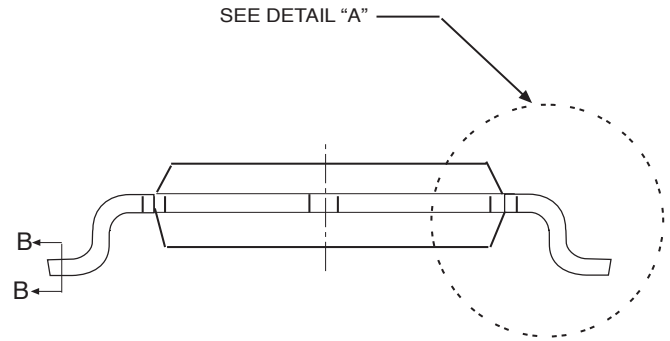
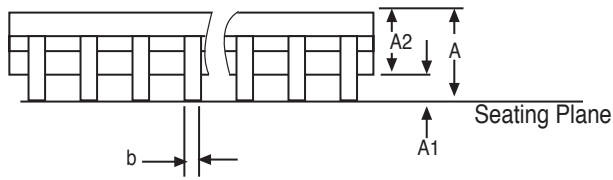
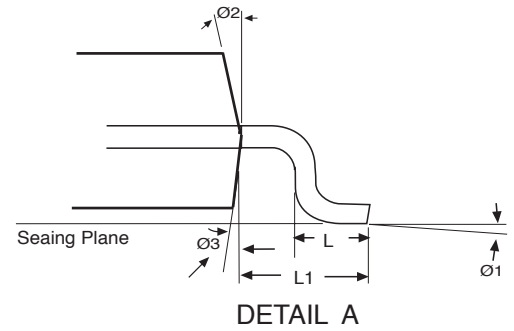
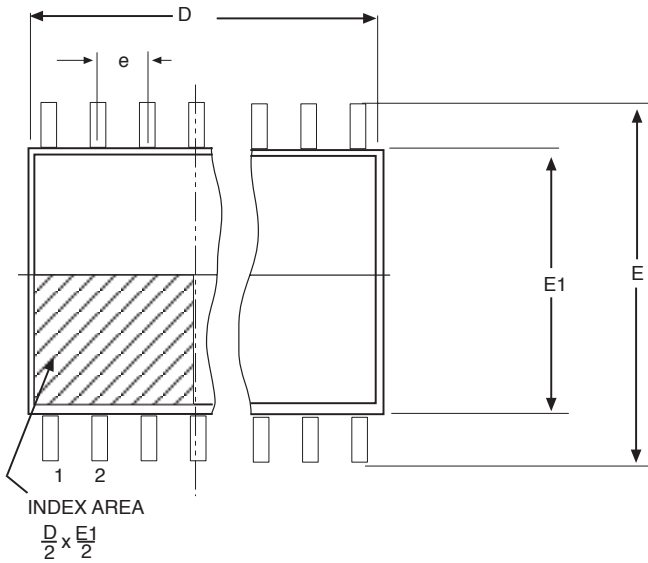


| 16 Pin SOIC JEDEC MS-013 (AA) Variation | | | |
|---|-----------|-----|------|
| SYMBOL | MIN | NOM | MAX |
| A | 2.35 | - | 2.65 |
| A1 | 0.1 | - | 0.3 |
| A2 | 2.05 | - | 2.55 |
| b | 0.31 | - | 0.51 |
| c | 0.2 | - | 0.33 |
| D | 10.30 BSC | | |
| E | 10.30 DSC | | |
| E1 | 7.50 BSC | | |
| e | 1.27 BSC | | |
| L | 0.4 | - | 1.27 |
| L1 | 1.04 REF | | |
| L2 | 0.25 BSC | | |
| Ø | 0° | - | 8° |
| Ø1 | 5° | - | 15° |

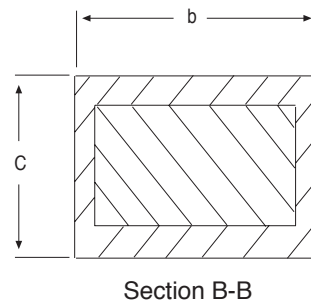


Note: Dimensions in (mm)

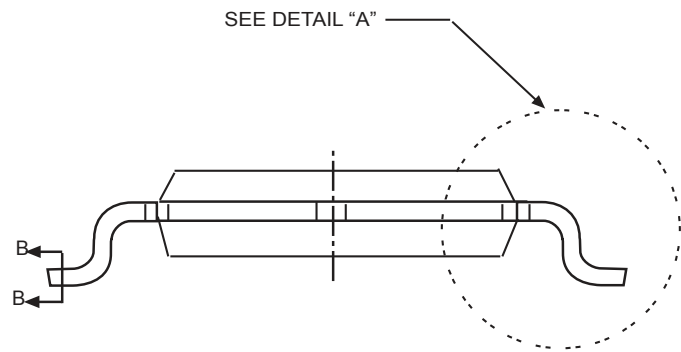
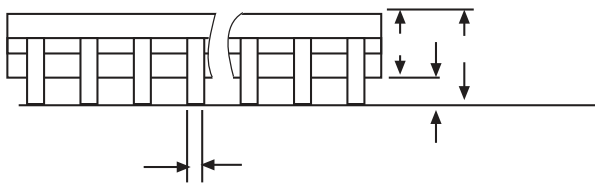
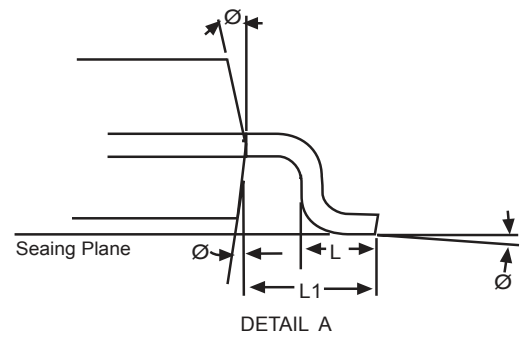
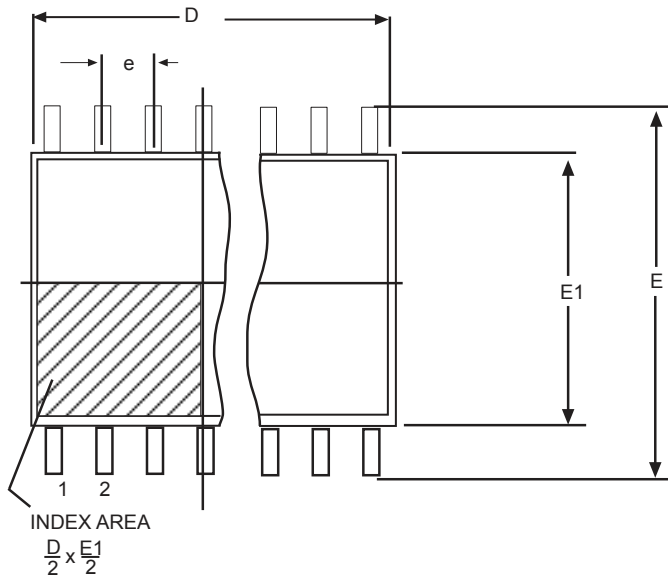




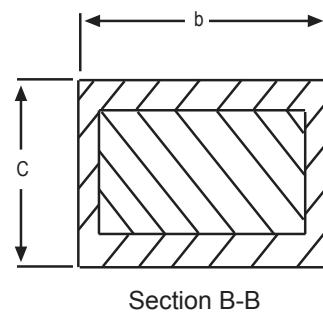
| 16 Pin TSSOP JEDEC MO-153 (AB) Variation | | | |
|---|----------|-----|------|
| SYMBOL | MIN | NOM | MAX |
| A | - | - | 1.2 |
| A1 | 0.05 | - | 0.15 |
| A2 | 0.8 | 1 | 1.05 |
| b | 0.19 | - | 0.3 |
| c | 0.09 | - | 0.2 |
| D | 4.9 | 5 | 5.1 |
| E | 6.40 BSC | | |
| E1 | 4.3 | 4.4 | 4.5 |
| e | 0.65 BSC | | |
| Ø1 | 0° | 4° | 8° |
| Ø2 | 12° REF | | |
| Ø3 | 12° REF | | |
| L | 0.45 | 0.6 | 0.75 |
| L1 | 1.00 REF | | |



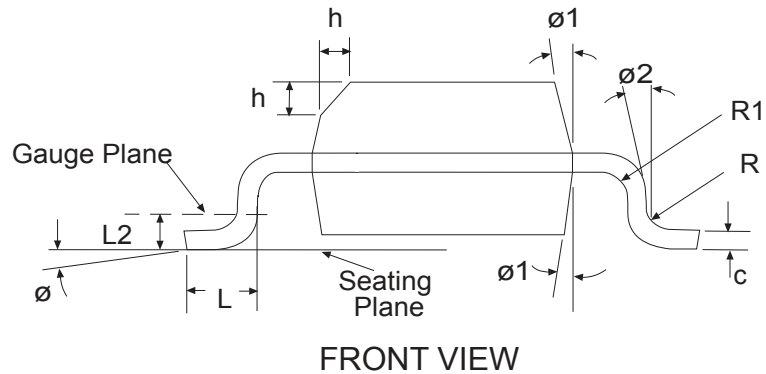
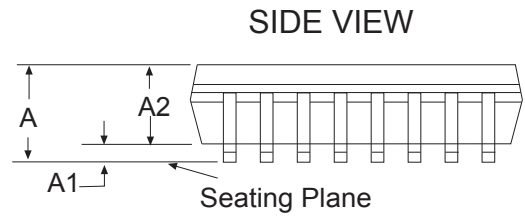
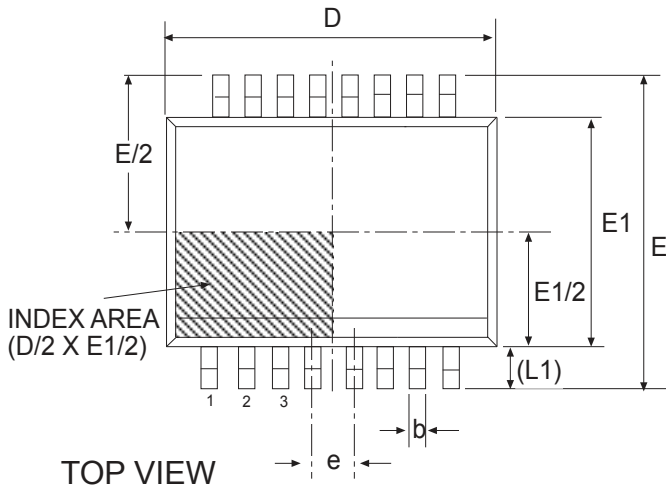
Note: Dimensions in (mm)



| 20 Pin TSSOP JEDEC MO-153 (AC) Variation | | | |
|---|----------|-----|------|
| SYMBOL | MIN | NOM | MAX |
| A | - | - | 1.2 |
| A1 | 0.05 | - | 0.15 |
| A2 | 0.8 | 1 | 1.05 |
| b | 0.19 | - | 0.3 |
| c | 0.09 | - | 0.2 |
| D | 6.4 | 6.5 | 6.6 |
| E | 6.40 BSC | | |
| E1 | 4.3 | 4.4 | 4.5 |
| e | 0.65 BSC | | |
| Ø1 | 0° | - | 8° |
| Ø2 | 12° REF | | |
| Ø3 | 12° REF | | |
| L | 0.45 | 0.6 | 0.75 |
| L1 | 1.00 REF | | |



Note: Dimensions in (mm)



| 16 Pin NSOIC | | | | JEDEC MS-012 | | | Variation AC | | |
|-----------------------------|---|-----|------|---|-----|-------|--------------|--|--|
| SYMBOL | Dimensions in Millimeters: Controlling Dimension | | | Dimensions in Inches Conversion Factor: 1 Inch = 25.40 mm | | | | | |
| | MIN | NOM | MAX | MIN | NOM | MAX | | | |
| A | 1.35 | - | 1.75 | 0.053 | - | 0.069 | | | |
| A1 | 0.10 | - | 0.25 | 0.004 | - | 0.010 | | | |
| A2 | 1.25 | - | 1.65 | 0.049 | - | 0.065 | | | |
| b | 0.31 | - | 0.51 | 0.012 | - | 0.020 | | | |
| c | 0.17 | - | 0.25 | 0.007 | - | 0.010 | | | |
| E | 6.00 BSC | | | 0.236 BSC | | | | | |
| E1 | 3.90 BSC | | | 0.154 BSC | | | | | |
| e | 1.27 BSC | | | 0.050 BSC | | | | | |
| h | 0.25 | | 0.50 | 0.010 | - | 0.020 | | | |
| L | 0.40 | - | 1.27 | 0.016 | - | 0.050 | | | |
| L1 | 1.04 REF | | | 0.041 REF | | | | | |
| L2 | 0.25 BSC | | | 0.010 BSC | | | | | |
| R | 0.07 | - | - | 0.003 | - | - | | | |
| R1 | 0.07 | - | - | 0.003 | - | - | | | |
| theta | 0° | - | 8° | 0° | - | 8° | | | |
| phi1 | 5° | - | 15° | 5° | - | 15° | | | |
| phi2 | 0° | - | - | 0° | - | - | | | |
| D | 9.90 BSC | | | 0.390 BSC | | | | | |
| SIPEX Pkg Signoff Date/Rev: | | | | JL Oct12 -05 / Rev A | | | | | |

ORDERING INFORMATION

| Part Number | Temperature Range | Package Type |
|---------------|-------------------|--------------|
| SP3222EBCA | 0°C to +70°C | 20-Pin SSOP |
| SP3222EBCA/TR | 0°C to +70°C | 20-Pin SSOP |
| SP3222EBCP | 0°C to +70°C | 18-Pin PDIP |
| SP3222EBCT | 0°C to +70°C | 18-Pin WSOIC |
| SP3222EBCT/TR | 0°C to +70°C | 18-Pin WSOIC |
| SP3222EBCY | 0°C to +70°C | 20-Pin TSSOP |
| SP3222EBCY/TR | 0°C to +70°C | 20-Pin TSSOP |
| SP3222EBEA | -40°C to +85°C | 20-Pin SSOP |
| SP3222EBEA/TR | -40°C to +85°C | 20-Pin SSOP |
| SP3222EBEP | -40°C to +85°C | 18-Pin PDIP |
| SP3222EBET | -40°C to +85°C | 18-Pin WSOIC |
| SP3222EBET/TR | -40°C to +85°C | 18-Pin WSOIC |
| SP3222EBEY | -40°C to +85°C | 20-Pin TSSOP |
| SP3222EBEY/TR | -40°C to +85°C | 20-Pin TSSOP |
| | | |
| SP3232EBCA | 0°C to +70°C | 16-Pin SSOP |
| SP3232EBCA/TR | 0°C to +70°C | 16-Pin SSOP |
| SP3232EBCP | 0°C to +70°C | 16-Pin PDIP |
| SP3232EBCT | 0°C to +70°C | 16-Pin WSOIC |
| SP3232EBCT/TR | 0°C to +70°C | 16-Pin WSOIC |
| SP3232EBCN | 0°C to +70°C | 16-Pin NSOIC |
| SP3232EBCN/TR | 0°C to +70°C | 16-Pin NSOIC |
| SP3232EBCY | 0°C to +70°C | 16-Pin TSSOP |
| SP3232EBCY/TR | 0°C to +70°C | 16-Pin TSSOP |
| SP3232EBEA | -40°C to +85°C | 16-Pin SSOP |
| SP3232EBEA/TR | -40°C to +85°C | 16-Pin SSOP |
| SP3232EBEP | -40°C to +85°C | 16-Pin PDIP |
| SP3232EBET | -40°C to +85°C | 16-Pin WSOIC |
| SP3232EBET | -40°C to +85°C | 16-Pin WSOIC |
| SP3232EBEN | -40°C to +85°C | 16-Pin NSOIC |
| SP3232EBEN/TR | -40°C to +85°C | 16-Pin NSOIC |
| SP3232EBEY | -40°C to +85°C | 16-Pin TSSOP |
| SP3232EBEY/TR | -40°C to +85°C | 16-Pin TSSOP |

Available in lead free packaging. To order add "-L" suffix to part number.

Example: SP3232EBEN/TR = standard; SP3232EBEN-L/TR = lead free

/TR = Tape and Reel

Pack quantity is 1,500 for WSOIC, SSOP or 20 pin TSSOP and 2,500 for NSOIC or 16 pin TSSOP.

[CLICK HERE TO ORDER SAMPLES](#)



ANALOG EXCELLENCE

**Headquarters and
Sales Office**

233 South Hillview Drive
Milpitas, CA 95035
TEL: (408) 934-7500
FAX: (408) 935-7600

Sipex Corporation reserves the right to make changes to any products described herein. Sipex does not assume any liability arising out of the application or use of any product or circuit described herein; neither does it convey any license under its patent rights nor the rights of others.