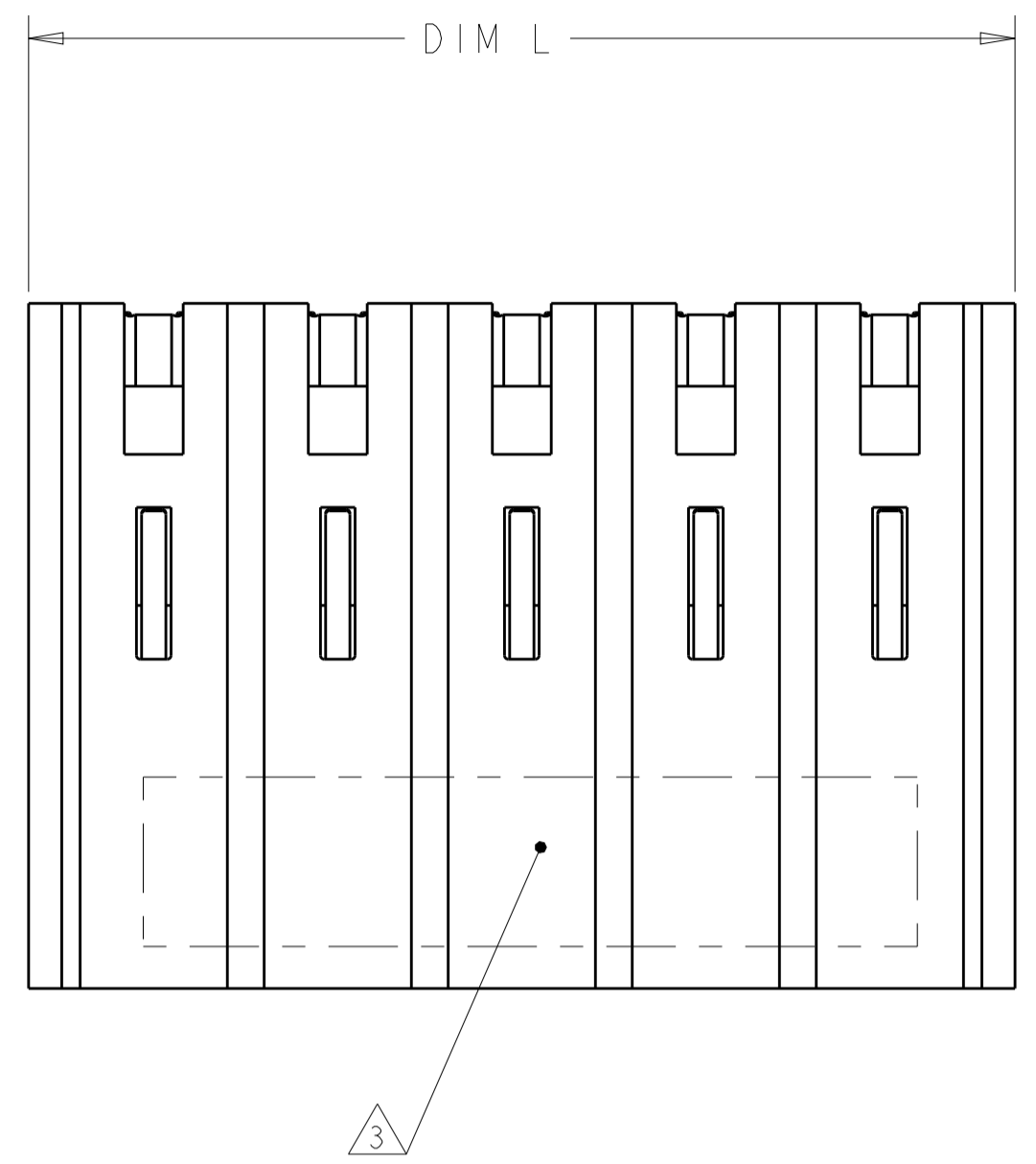
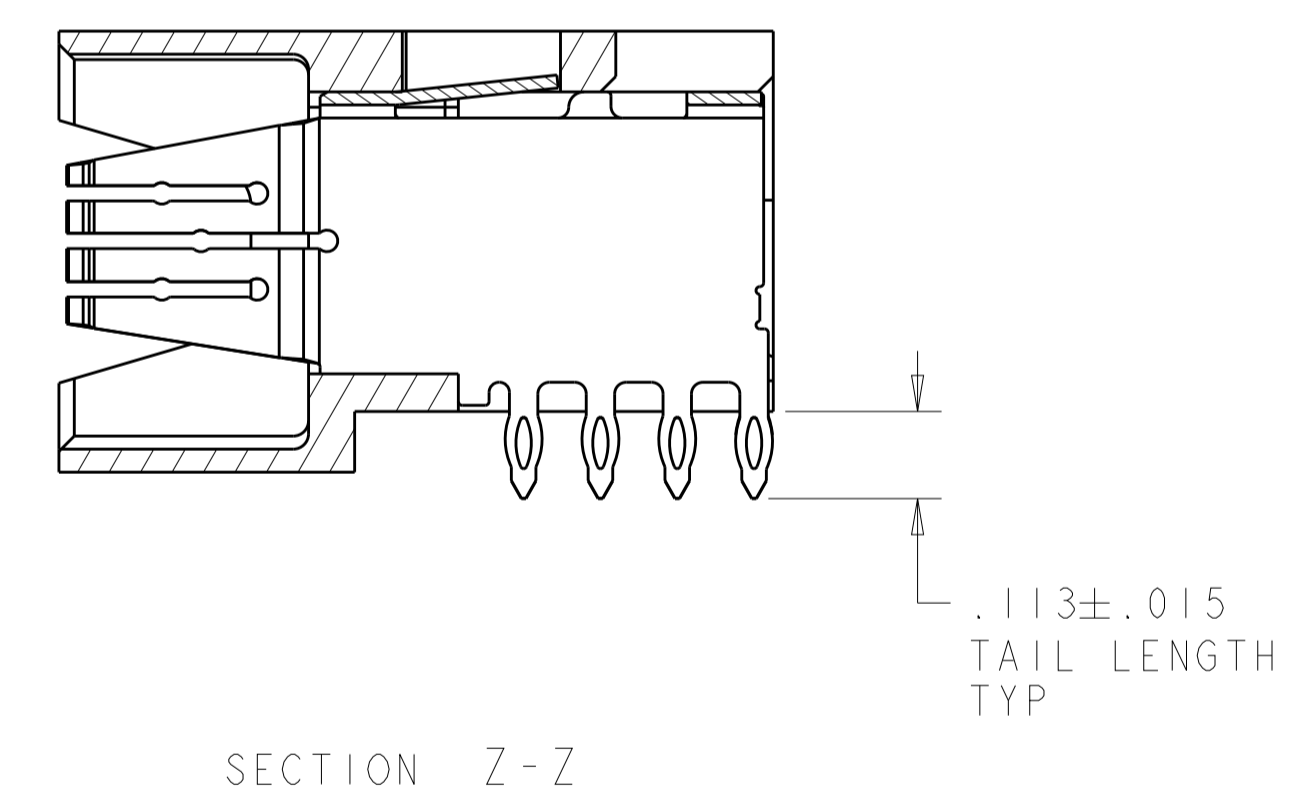
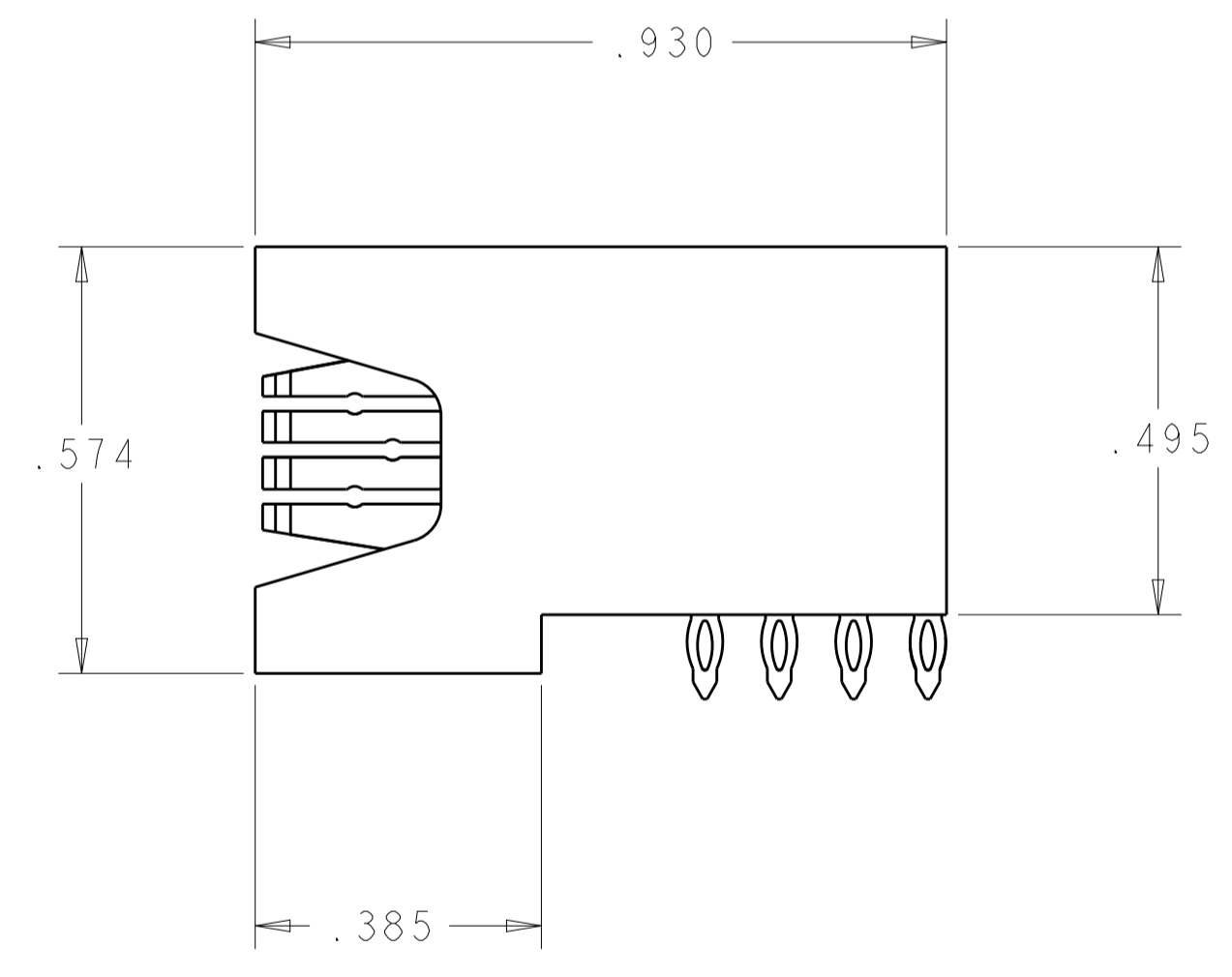
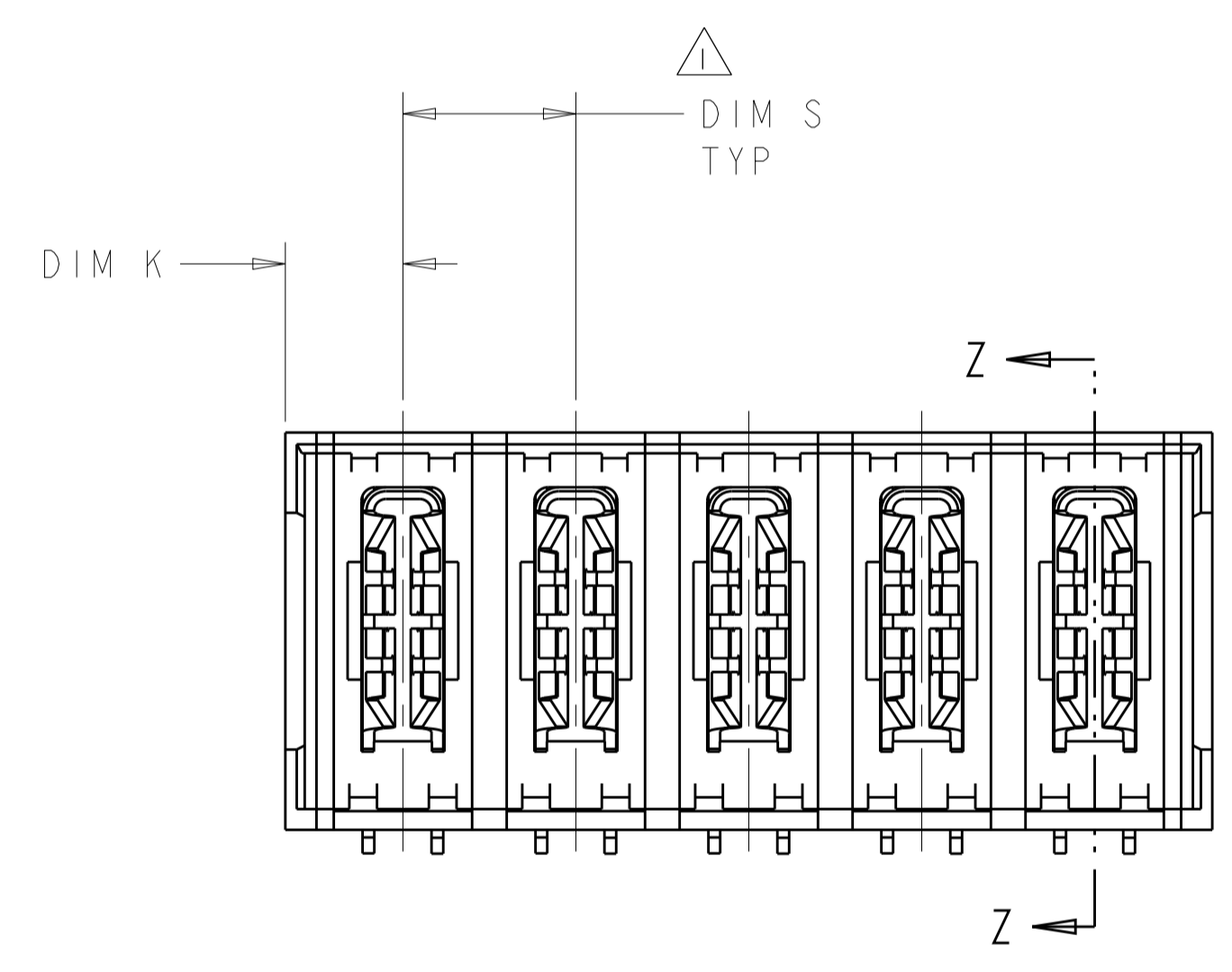


| LOC | DIST | REVISIONS |     |                       |           |     |      |
|-----|------|-----------|-----|-----------------------|-----------|-----|------|
|     |      | P         | LTN | DESCRIPTION           | DATE      | DWN | APVD |
| ES  | 00   | A1        |     | REV PER ECR-06-015710 | 28JUN2006 | DZ  | SY   |
|     |      | A2        |     | REV PER ECR-10-009085 | 06MAY2010 | OL  | SY   |



- 1 DIMENSION S IS CENTERLINE SPACING OF POWER MODULE
- 2 THE MAXIMUM OVERALL LENGTH (DIM L) OF A PART IS 8.00
- 3 "AMP" PART NUMBER AND DATE CODE TO BE MARKED IN AREA SHOWN. PARTS UNDER 2.00" LONG MAY BE MARKED ON BOTH SIDES.
- 4 MATERIAL: HOUSING - GLASS FILLED HIGH TEMP THERMO PLASTIC, UL94 V-0  
POWER CONTACT - HIGH CONDUCTIVITY COPPER ALLOY
- 5 CONTACT PLATING: NOBLE METAL PLATING ON CONTACT FUNCTIONAL AREA OF POWER AND SIGNAL CONTACTS
- 6 MECHANICAL CONNECTOR KEEP OUT ZONE.
- 7 DATUM AND BASIC DIMENSIONS ESTABLISHED BY CUSTOMER.
- 8 PCB - ALL HOLE DIAMETERS ARE FINISHED HOLE SIZES.
- 9 PCB - .0453±.0010 DRILLED HOLES WITH .0003 WITH S<sub>n</sub> OVER .001 TO .003 Cu PLATING TO ACHIEVE A .040±.003 DIA. HOLE.
- 10 VARIABLE DIMENSIONS SHOWN ON VIEW ( SHEET 2 ).



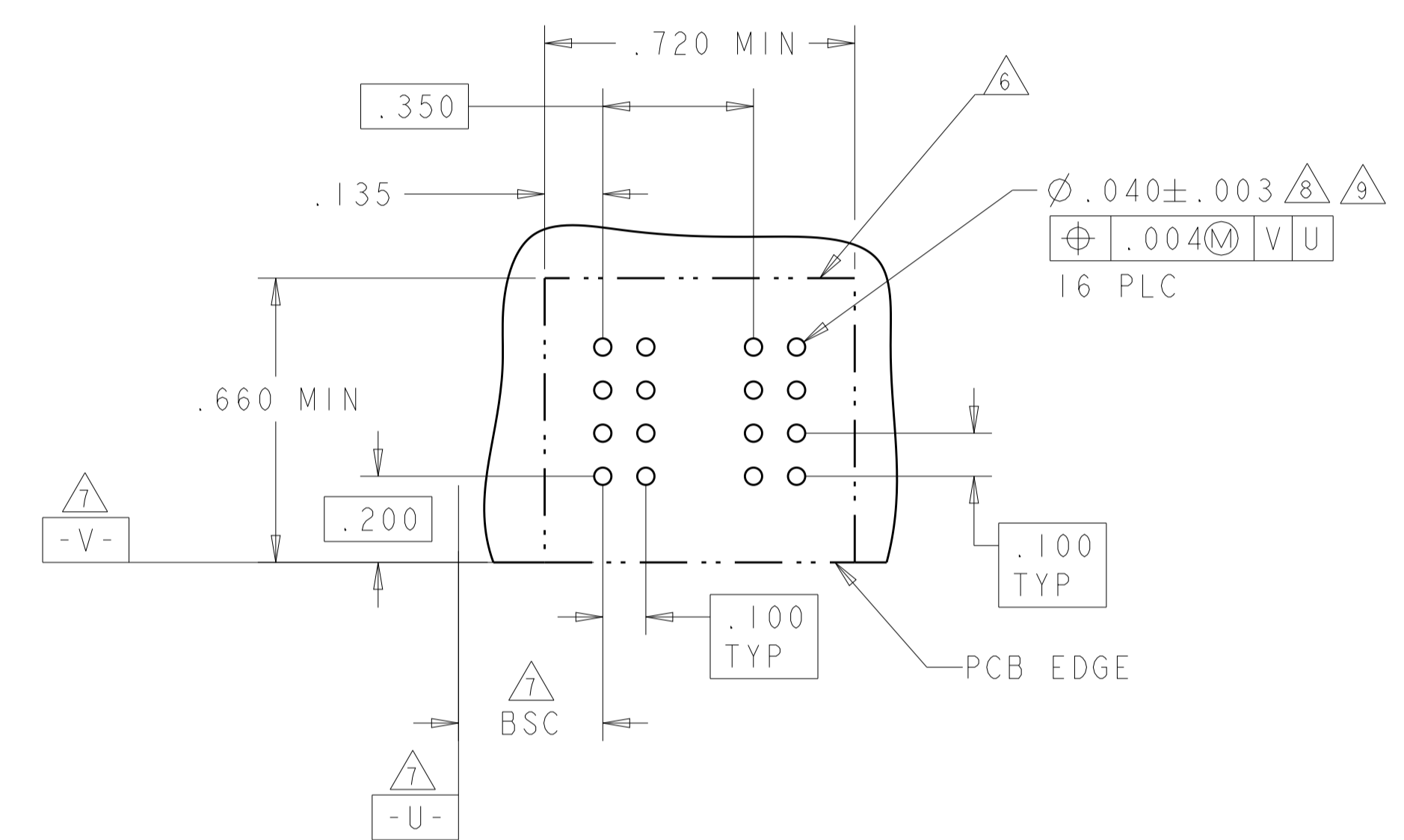
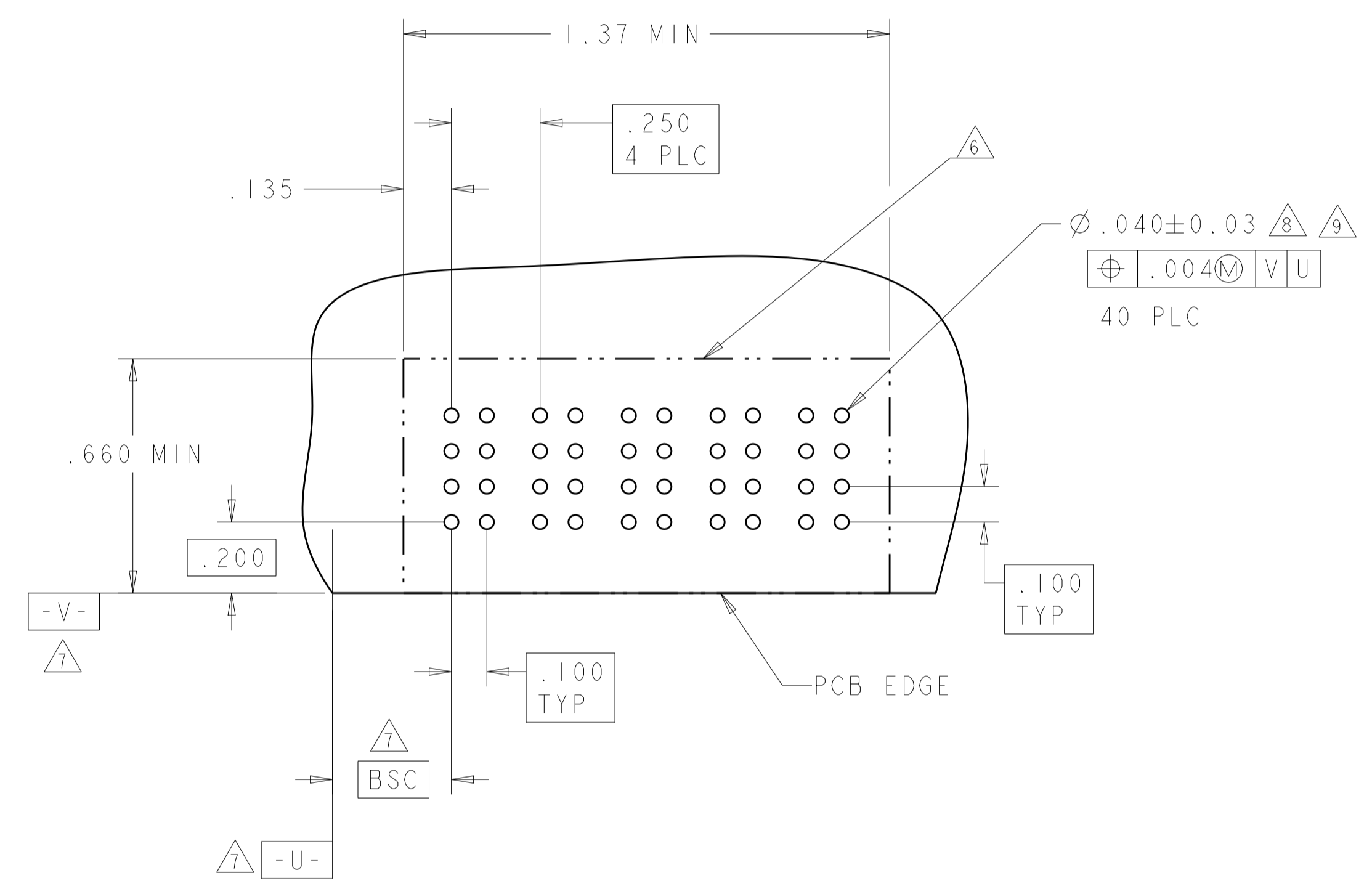
|       |       |       |             |             |
|-------|-------|-------|-------------|-------------|
| .200  | 1.340 | .170  | 6HDP        | 6450527-5   |
| .200  | .940  | .170  | 4HDP        | 6450527-4   |
| △     | 1.290 | .170  | 4ACP        | 6450527-3   |
| .350  | .690  | .170  | 2ACP        | 6450527-2   |
| .250  | 1.340 | .170  | 5P          | 6450527-1   |
| DIM S | DIM L | DIM K | DESCRIPTION | PART NUMBER |

|                           |  |   |  |  |  |  |  |
|---------------------------|--|---|--|--|--|--|--|
| DIMENSIONS:<br>INCHES<br> |  | TOLERANCES UNLESS OTHERWISE SPECIFIED:<br>0 PLC ±.<br>1 PLC ±.01<br>2 PLC ±.01<br>3 PLC ±.005<br>4 PLC ±.0020<br>ANGLES ±.020<br>FINISH |  | DWN S. ZHAO 11APR2006<br>CHK S. ZHAO 11APR2006<br>APVD S. YAO  |  | <b>tyco</b><br><b>Electronics</b><br>Tyco Electronics Incorporated<br>Shanghai, P.R. China. 200233 |  |
| MATERIAL: -<br>FINISH: -  |  | CUSTOMER DRAWING  |  | NAME: RIGHT ANGLE HEADER ASSEMBLY WITHOUT GUIDES, PRESS FIT MULTI-BEAM XL<br>PRODUCT SPEC: 108-1973<br>APPLICATION SPEC: 114-13038 |  | SIZE: A1<br>CAGE CODE: 00779<br>DRAWING NO: 6450527<br>RESTRICTED TO: -                            |  |
| SCALE: 4:1                |  |   |  | SHEET 1 OF 3   |  | REV A3   |  |

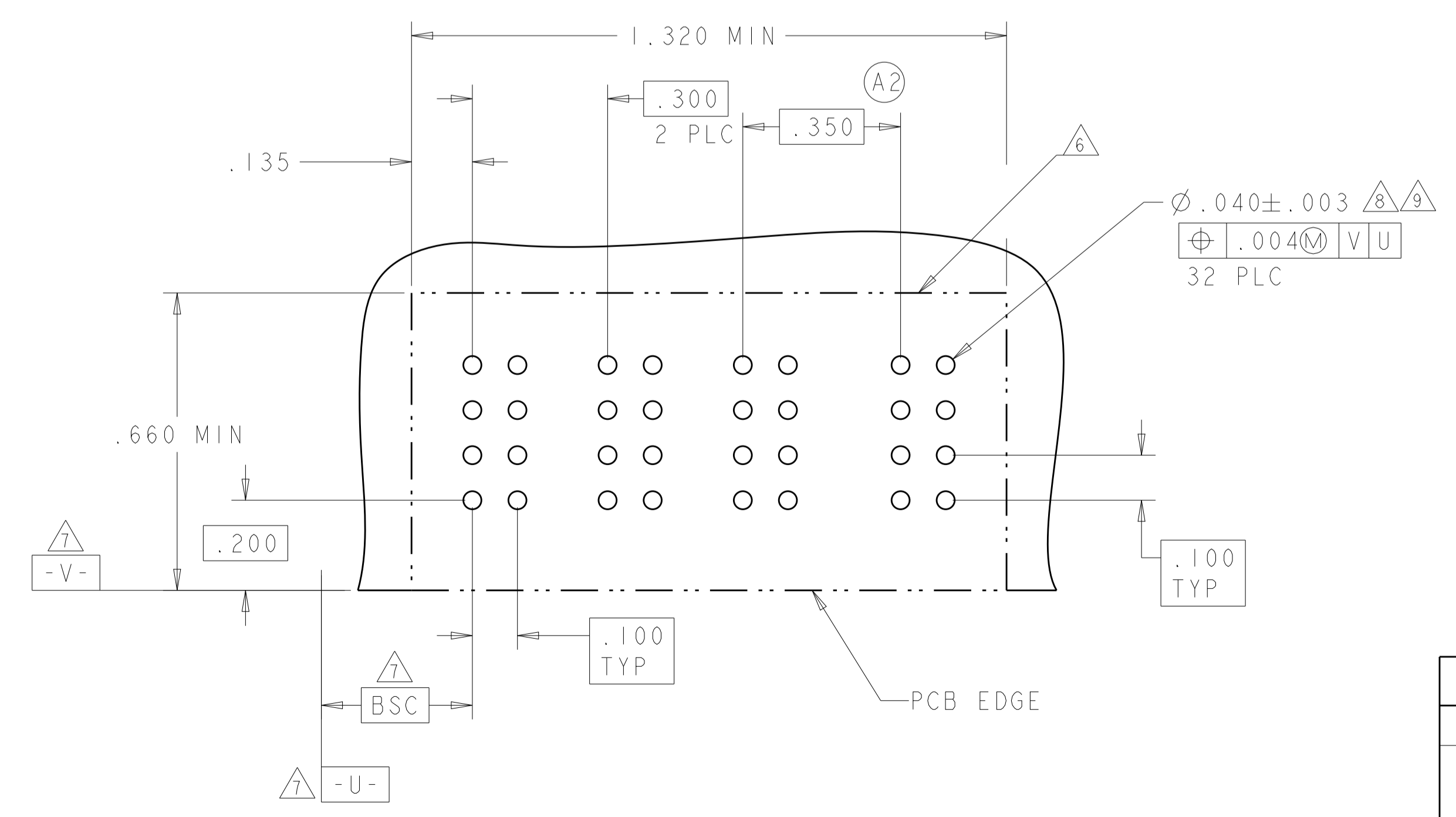
| LOC | DIST | REVISIONS   |      |     |      |
|-----|------|-------------|------|-----|------|
| P   | LTN  | DESCRIPTION | DATE | DMN | APVD |
| ES  | 00   | SEE SHEET 1 |      |     |      |

| PART NUMBER | POWER |    |    |    |    |
|-------------|-------|----|----|----|----|
|             | P1    | P2 | P3 | P4 | P5 |
| 6450527-1   | PT    | PT | PT | PT | PT |
| 5P          |       |    |    |    |    |

| PART NUMBER | POWER |    |
|-------------|-------|----|
|             | P1    | P2 |
| 6450527-2   | PT    | PT |
| 2ACP        |       |    |



| PART NUMBER | POWER |    |    |    |
|-------------|-------|----|----|----|
|             | P1    | P2 | P3 | P4 |
| 6450527-3   | PT    | PT | PT | PT |
| 4ACP        |       |    |    |    |



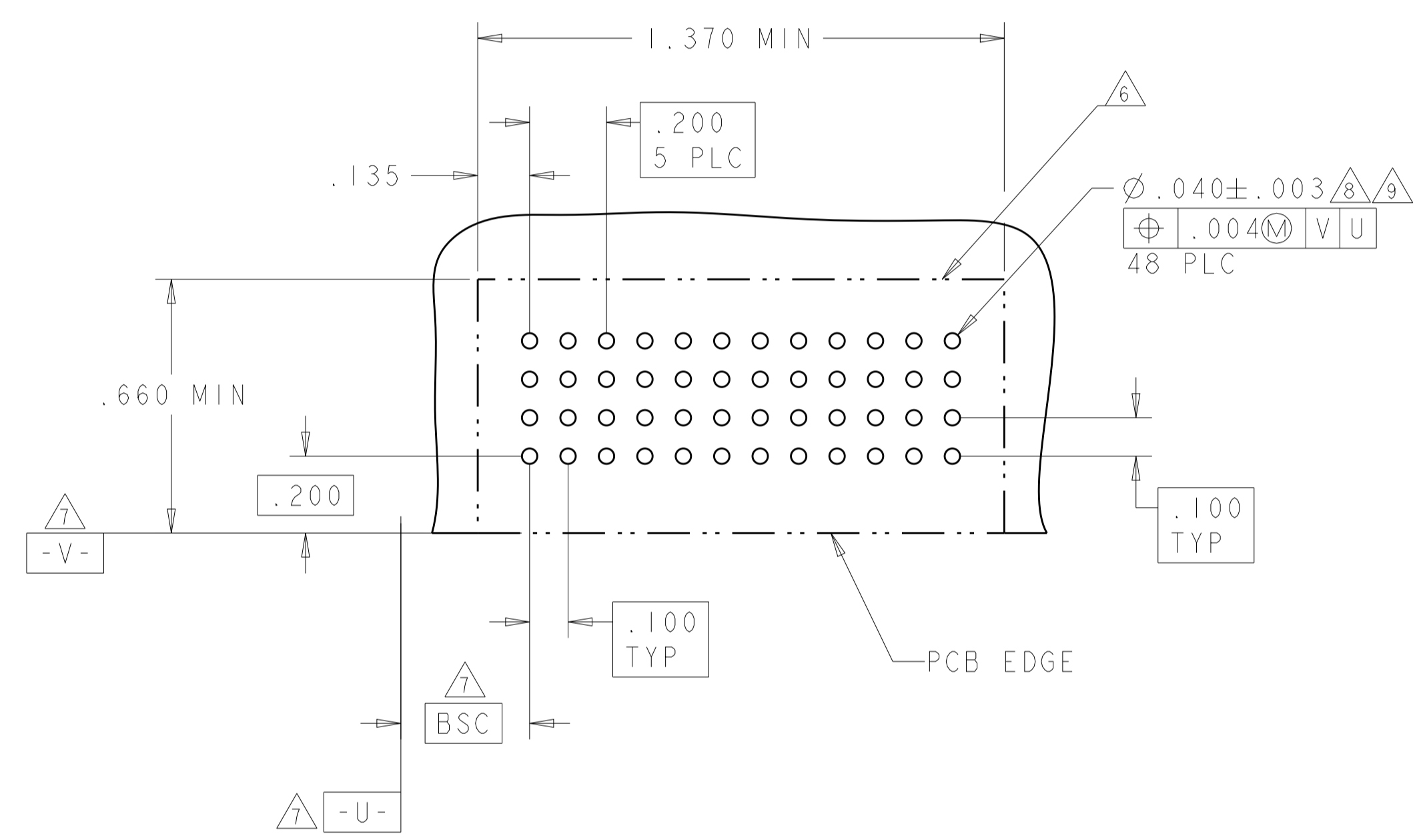
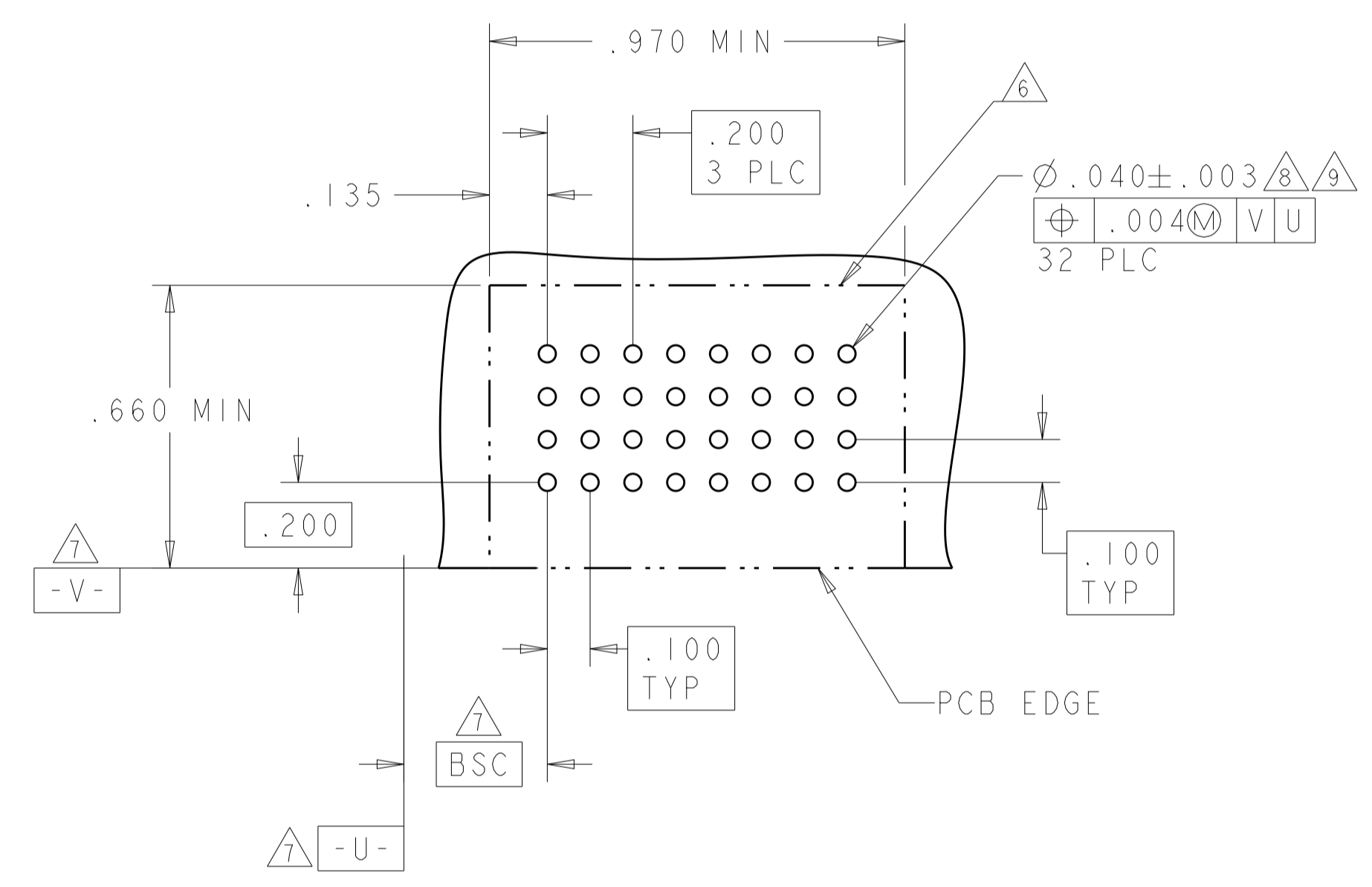
| PT   | POWER PRESSFIT |
|------|----------------|
| CODE | DESCRIPTION    |
|      | CONTACT TABLE  |

|   |   |  |   |
|---|---|--|---|
| <small>THIS DRAWING IS UNPUBLISHED. RELEASED FOR PUBLICATION. IT IS THE PROPERTY OF TYCO ELECTRONICS CORPORATION. IT IS TO BE USED ONLY FOR THE PURPOSES AND IN THE QUANTITIES SPECIFIED IN THE ORDER. IT IS TO BE RETURNED TO TYCO ELECTRONICS CORPORATION UPON REQUEST.</small> |   | DMN: S. ZHAO 11APR2006<br>CHK: S. ZHAO 11APR2006<br>APVD: S. YAO                 | Tyco Electronics Incorporated<br>Shanghai, P.R. China. 200233   |
| DIMENSIONS:<br>INCHES:  | TOLERANCES UNLESS OTHERWISE SPECIFIED:<br>0 PLC ±.<br>1 PLC ±.01<br>2 PLC ±.01<br>3 PLC ±.005<br>4 PLC ±.002<br>ANGLES ±.2° | NAME: S. YAO<br>PRODUCT SPEC: 108-1973<br>APPLICATION SPEC: 114-13038<br>WEIGHT: | tyco<br>Electronics<br>RIGHT ANGLE HEADER ASSEMBLY WITHOUT GUIDES, PRESS FIT MULTI-BEAM XL<br>SIZE: A1<br>CAGE CODE: 00779<br>DRAWING NO: 6450527<br>RESTRICTED TO: |
| MATERIAL:   | FINISH:   | CUSTOMER DRAWING   | SCALE: 4:1 SHEET 2 OF 3 REV: A3   |

| LOC | DIST | REVISIONS   |      |     |      |
|-----|------|-------------|------|-----|------|
| P   | LTN  | DESCRIPTION | DATE | DWN | APVD |
| ES  | 00   | SEE SHEET 1 |      |     |      |
|     |      |             |      |     |      |
|     |      |             |      |     |      |

| PART NUMBER | POWER |    |    |    |
|-------------|-------|----|----|----|
|             | P1    | P2 | P3 | P4 |
| 6450527-4   | PT    | PT | PT | PT |
| 4HDP        |       |    |    |    |

| PART NUMBER | POWER |    |    |    |    |    |
|-------------|-------|----|----|----|----|----|
|             | P1    | P2 | P3 | P4 | P5 | P6 |
| 6450527-5   | PT    | PT | PT | PT | PT | PT |
| 6HDP        |       |    |    |    |    |    |



|  |  |  |   |
|--|--|--|---|
| <small>THIS DRAWING IS UNPUBLISHED. RELEASED FOR PUBLICATION BY TYCO ELECTRONICS CORPORATION. ALL RIGHTS RESERVED.</small> |  | DWN: S. ZHAO 11APR2006<br>CHK: S. ZHAO 11APR2006<br>APVD: S. YAO   | <b>tyco</b><br>Electronics<br>Tyco Electronics Incorporated<br>Shanghai, P.R. China. 200233   |
| DIMENSIONS: INCHES<br>   |  | TOLERANCES UNLESS OTHERWISE SPECIFIED:<br>0 PLC ±.<br>1 PLC ±.01<br>2 PLC ±.01<br>3 PLC ±.005<br>4 PLC ±.0020<br>ANGLES ±.2° | NAME: RIGHT ANGLE HEADER ASSEMBLY WITHOUT GUIDES, PRESS FIT MULTI-BEAM XL<br>PRODUCT SPEC: 108-1973<br>APPLICATION SPEC: 114-13038<br>SIZE: A1<br>CAGE CODE: 00779<br>DRAWING NO: 6450527<br>RESTRICTED TO: - |
| MATERIAL: -<br>FINISH: -   |  | WEIGHT: -<br>CUSTOMER DRAWING  | SCALE: 4:1<br>SHEET: 3 OF 3<br>REV: A3  |