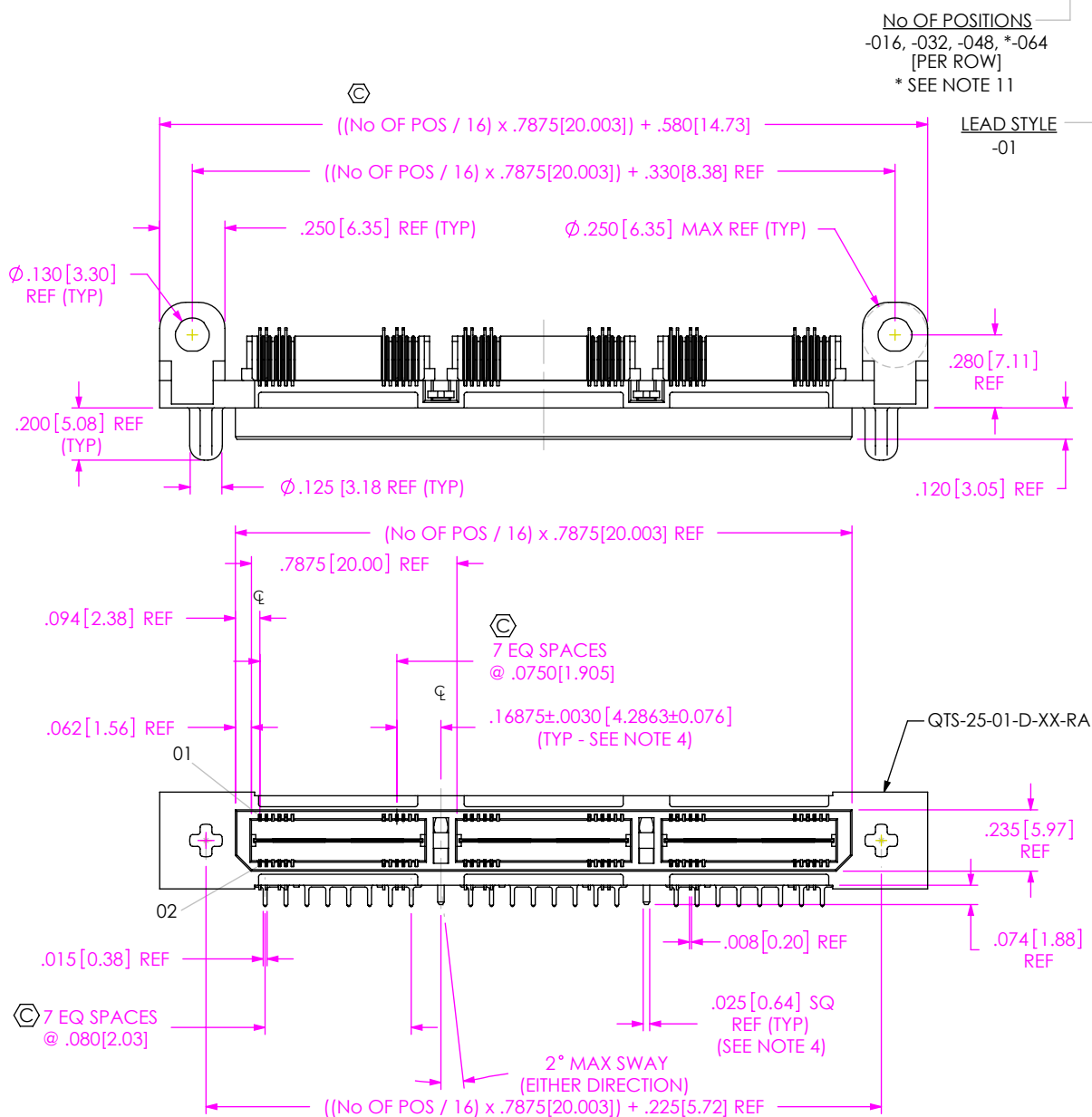


DO NOT SCALE FROM THIS PRINT



No OF POSITIONS
-016, -032, -048, *-064
[PER ROW]
* SEE NOTE 11

LEAD STYLE
-01

OPTION 2
-LS1: LOCKING SCREW (SEE NOTE 10)
(FOR MATING WITH QSS...-RA...-LS1)
(USE WITH SP-18-01-TM SOLDER PIN)
(SEE FIG 2, SHT 3)
-LS2: LOCKING SCREW (SEE NOTE 10)
(FOR MATING WITH QSS...-LS2)
(SEE FIG 3, SHT 3)
(USE WITH SP-18-01-TM SOLDER PIN)
-P: PICK AND PLACE PAD
(USE PPP-63) (SEE FIG 5, SHT 4)

OPTION 1
-WT: WELD TAB (REQUIRED OPTION
FOR POSITIONS -032, -048, & -064,
NOT AVAILABLE FOR POSITION -016)
(USE WT-16-01-T)

-RA: RIGHT ANGLE

DIFFERENTIAL PAIR

ROW SPECIFICATION

-D: DOUBLE (USE QTS-25-01-D-XX-RA)

PLATING SPECIFICATION

-H: HEAVY GOLD
(USE T-1S52-01-H, T-1S53-03-H, IM-1G14-01-1-L)
(SEE NOTE 6)
-F: FLASH SELECTIVE GOLD, MATTE TIN TAIL
(USE T-1S52-01-F, T-1S53-03-F, IM-1G14-01-1-F)
(SEE NOTE 6)
-L: LIGHT SELECTIVE GOLD, MATTE TIN TAIL
(USE T-1S52-01-L, T-1S53-03-L, IM-1G14-01-1-L)
(SEE NOTE 6)

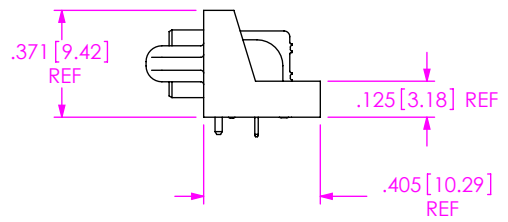


FIG 1
(QTS-048-01-X-D-DP-RA-WT SHOWN)

NOTES:

1. ϕ REPRESENTS A CRITICAL DIMENSION.
2. BURR ALLOWANCE: .0010 MAX.
3. MINIMUM PUSHOUT FORCE: 5 OZ.
4. DIMENSION ONLY APPLICABLE WITH WELD TAB OPTION.
WELD TABS NOT AVAILABLE ON -016 POSITION.
5. TIPS OF TERMINALS MAY NOT EXTEND BEYOND THIS SURFACE.
6. IF NEEDED, -L PLATING CAN BE SUBSTITUTED FOR -F PLATING.
7. DESIGNED FOR USE WITH A .062 THICK PCB
8. PARTS TO BE PACKAGED IN TRAY AS STANDARD.
9. NOTE DELETED.
10. MAXIMUM TORQUE ON STS-02 TO BE 20 IN-OZ.
11. AVAILABLE FOR EXISTING CUSTOMERS ONLY.
12. USE -Z- DATUM ZONE ONLY FOR MEASUREMENTS.

UNLESS OTHERWISE SPECIFIED,
DIMENSIONS ARE IN INCHES.
TOLERANCES ARE:
DECIMALS ANGLES
.XX: $\pm .01 [0.3]$ 2°
.XXX: $\pm .005 [0.13]$
.XXXX: $\pm .0020 [0.051]$

PROPRIETARY NOTE
THIS DOCUMENT CONTAINS CONFIDENTIAL AND
PROPRIETARY INFORMATION AND ALL DESIGN,
MANUFACTURING, REPRODUCTION, USE, PATENT RIGHTS
AND SALES RIGHTS ARE EXPRESSLY RESERVED BY SAMTEC,
INC. THIS DOCUMENT SHALL NOT BE DISCLOSED, IN WHOLE
OR PART, TO ANY UNAUTHORIZED PERSON OR ENTITY NOR
REPRODUCED, TRANSFERRED OR INCORPORATED IN ANY
OTHER PROJECT IN ANY MANNER WITHOUT THE EXPRESS
WRITTEN CONSENT OF SAMTEC, INC.



520 PARK EAST BLVD, NEW ALBANY, IN 47150
PHONE: 812-944-6733 FAX: 812-948-5047
e-Mail info@SAMTEC.com code 55322

MATERIAL: DO NOT SCALE DRAWING SHEET SCALE: 1:0.6666666666666667
INSULATOR:
TERMINAL & GROUND PLANE: PHOS BRONZE

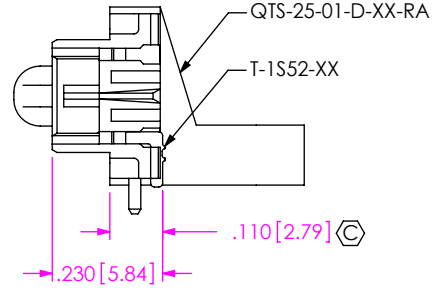
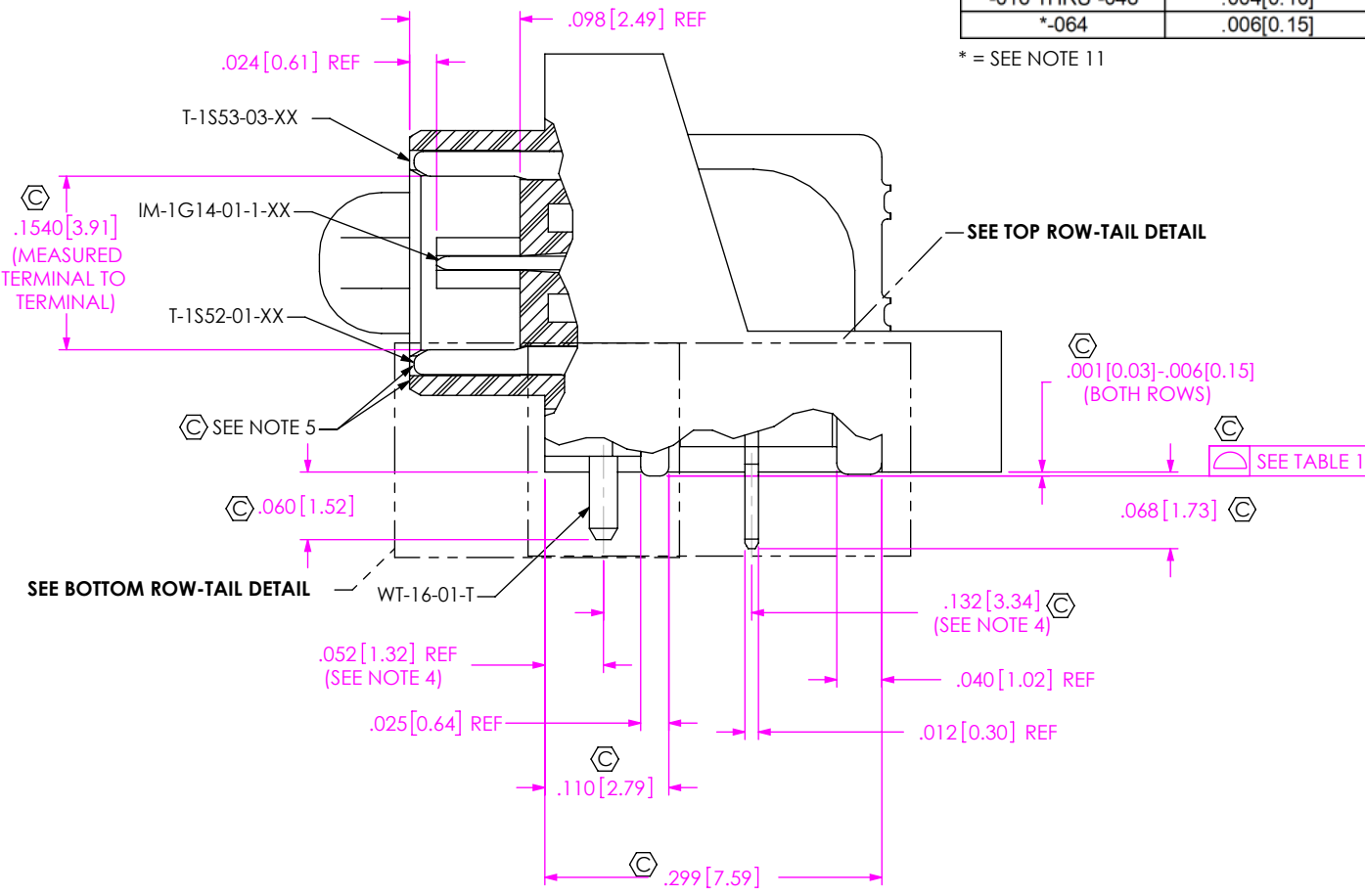
DESCRIPTION:
.635mm DOUBLE ROW RIGHT ANGLE TERMINAL STRIP
DWG. NO.

QTS-XXX-01-X-D-DP-RA-XX-XXX

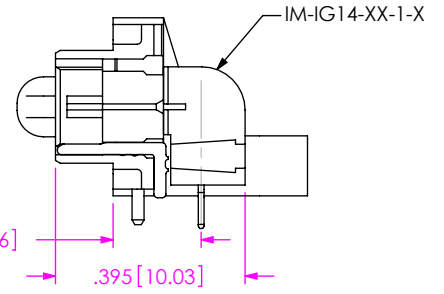
BY: DEAN P 2/13/2003 SHEET 1 OF 4

TABLE 1	
No OF POSITIONS	COPLANARITY
-016 THRU -048	.004[0.10]
*-064	.006[0.15]

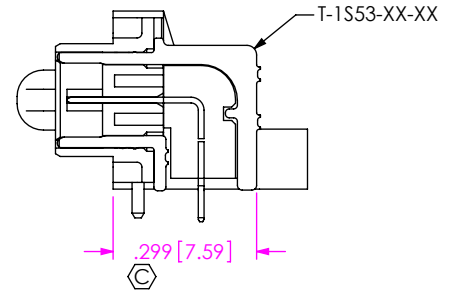
* = SEE NOTE 11



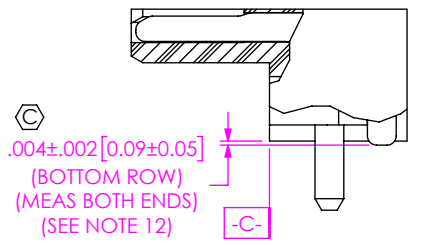
IN-PROCESS 1



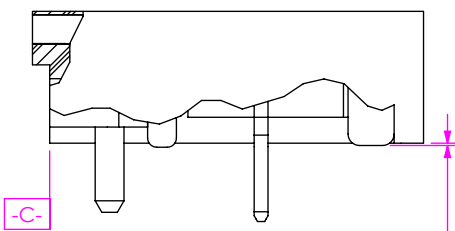
IN-PROCESS 2



IN-PROCESS 3



BOTTOM ROW - TAIL DETAIL
(LOCATE ASSEMBLY ON DATUM -C- FOR MEASUREMENT)



TOP ROW - TAIL DETAIL
(LOCATE ASSEMBLY ON DATUM -C- FOR MEASUREMENT)

PROPRIETARY NOTE
 THIS DOCUMENT CONTAINS CONFIDENTIAL AND PROPRIETARY INFORMATION AND ALL DESIGN, MANUFACTURING, REPRODUCTION, USE, PATENT RIGHTS AND SALES RIGHTS ARE EXPRESSLY RESERVED BY SAMTEC, INC. THIS DOCUMENT SHALL NOT BE DISCLOSED, IN WHOLE OR PART, TO ANY UNAUTHORIZED PERSON OR ENTITY NOR REPRODUCED, TRANSFERRED OR INCORPORATED IN ANY OTHER PROJECT IN ANY MANNER WITHOUT THE EXPRESS WRITTEN CONSENT OF SAMTEC, INC.

DO NOT SCALE DRAWING
 SHEET SCALE: 1:0.166667



520 PARK EAST BLVD, NEW ALBANY, IN 47150
 PHONE: 812-944-6733 FAX: 812-948-5047
 e-Mail info@SAMTEC.com code 55322

DESCRIPTION:
 .635mm DOUBLE ROW RIGHT ANGLE TERMINAL STRIP
 DWG. NO. QTS-XXX-01-X-D-DP-RA-XX-XXX
 BY: DEAN P 2/13/2003 SHEET 2 OF 4

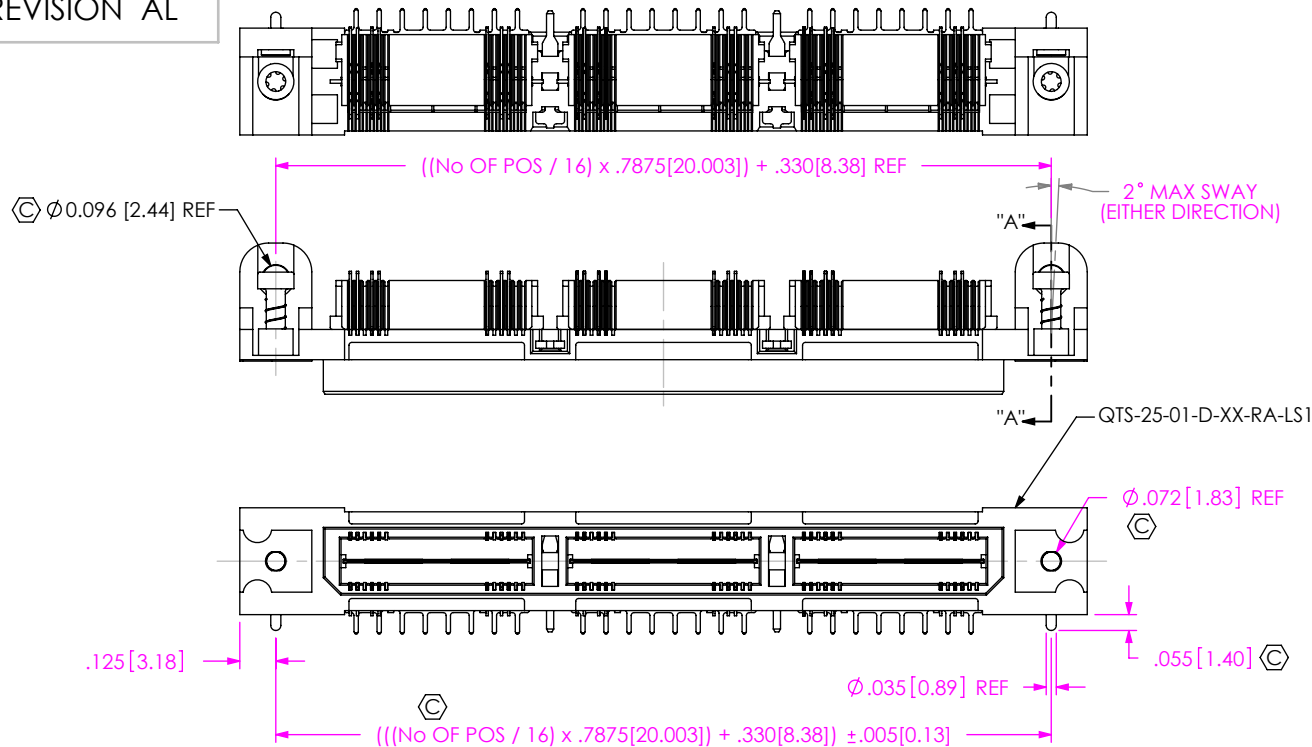
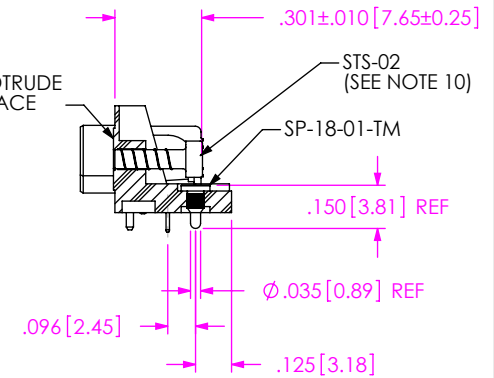


FIG 2
-LS1 OPTION
(QTS-048-01-X-D-DP-RA-WT-LS1 SHOWN)
(SAME AS FIG 1, EXCEPT AS SHOWN)



SECTION "A"-"A"

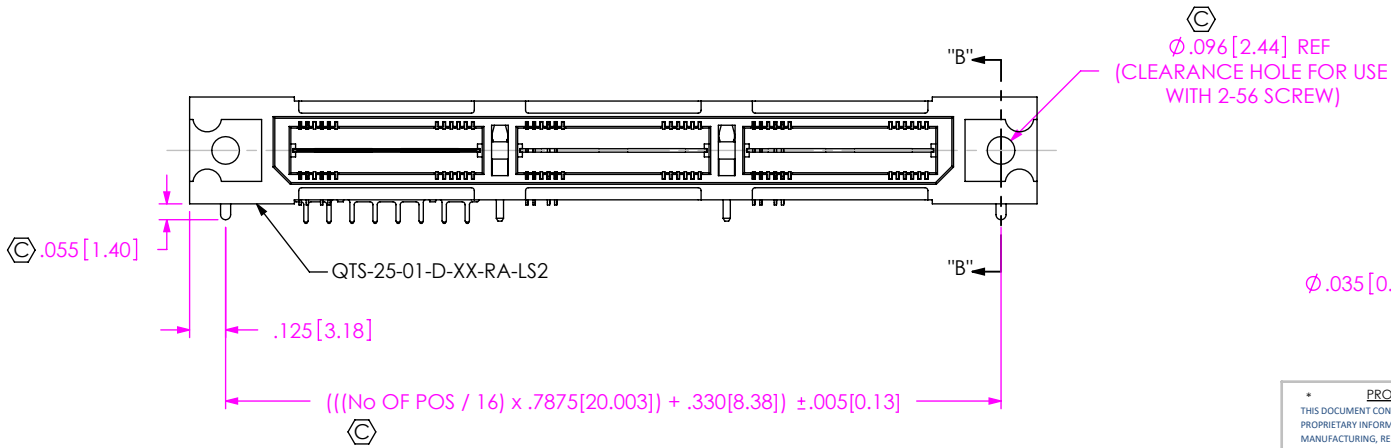
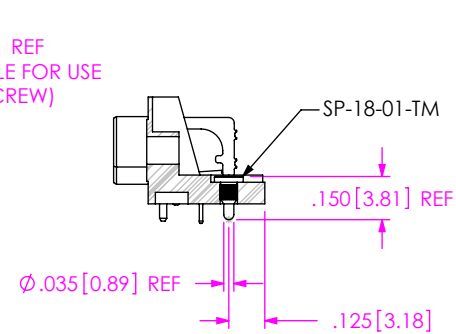


FIG 3
-LS2 OPTION
(QTS-048-01-X-D-DP-RA-WT-LS2 SHOWN)
(SAME AS FIG 2, EXCEPT AS SHOWN)



SECTION "B"-"B"

PROPRIETARY NOTE
THIS DOCUMENT CONTAINS CONFIDENTIAL AND PROPRIETARY INFORMATION AND ALL DESIGN, MANUFACTURING, REPRODUCTION, USE, PATENT RIGHTS AND SALES RIGHTS ARE EXPRESSLY RESERVED BY SAMTEC, INC. THIS DOCUMENT SHALL NOT BE DISCLOSED, IN WHOLE OR PART, TO ANY UNAUTHORIZED PERSON OR ENTITY NOR REPRODUCED, TRANSFERRED OR INCORPORATED IN ANY OTHER PROJECT IN ANY MANNER WITHOUT THE EXPRESS WRITTEN CONSENT OF SAMTEC, INC.

DO NOT SCALE DRAWING
SHEET SCALE: 1:0.666667



520 PARK EAST BLVD, NEW ALBANY, IN 47150
PHONE: 812-944-6733 FAX: 812-948-5047
e-Mail info@SAMTEC.com code 55322

DESCRIPTION:
.635mm DOUBLE ROW RIGHT ANGLE TERMINAL STRIP

DWG. NO.
QTS-XXX-01-X-D-DP-RA-XX-XXX

BY: DEAN P 2/13/2003 SHEET 3 OF 4

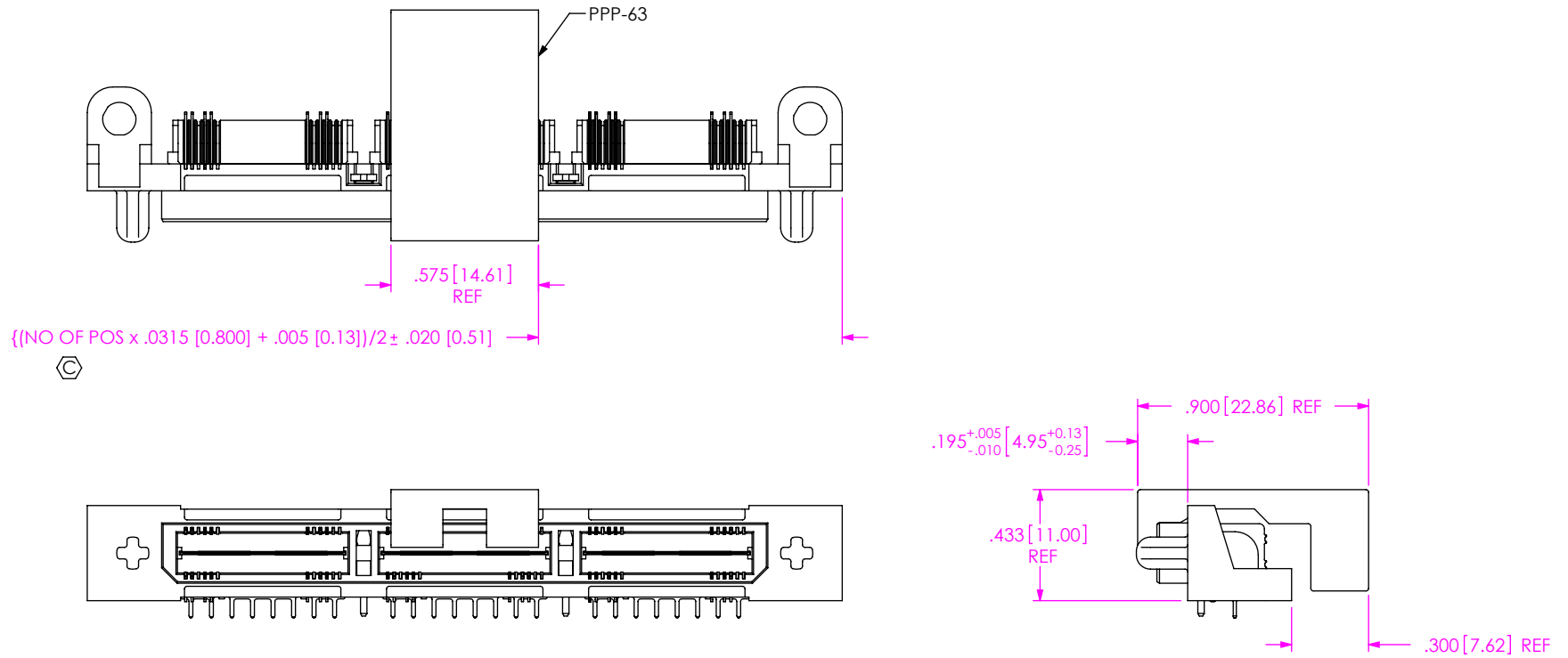


FIG 4
-P OPTION
(QTS-075-01-X-D-DP-RA-WT-P SHOWN)
(SAME AS FIG 1, EXCEPT AS SHOWN)

PROPRIETARY NOTE

THIS DOCUMENT CONTAINS CONFIDENTIAL AND PROPRIETARY INFORMATION AND ALL DESIGN, MANUFACTURING, REPRODUCTION, USE, PATENT RIGHTS AND SALES RIGHTS ARE EXPRESSLY RESERVED BY SAMTEC, INC. THIS DOCUMENT SHALL NOT BE DISCLOSED, IN WHOLE OR PART, TO ANY UNAUTHORIZED PERSON OR ENTITY NOR REPRODUCED, TRANSFERRED OR INCORPORATED IN ANY OTHER PROJECT IN ANY MANNER WITHOUT THE EXPRESS WRITTEN CONSENT OF SAMTEC, INC.

DO NOT SCALE DRAWING

SHEET SCALE: 1:0.666667



520 PARK EAST BLVD, NEW ALBANY, IN 47150
PHONE: 812-944-6733 FAX: 812-948-5047
e-Mail info@SAMTEC.com code 55322

DESCRIPTION:
.635mm DOUBLE ROW RIGHT ANGLE TERMINAL STRIP

DWG. NO.
QTS-XXX-01-X-D-DP-RA-XX-XXX

BY: DEAN P 2/13/2003 SHEET 4 OF 4