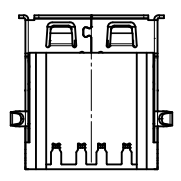
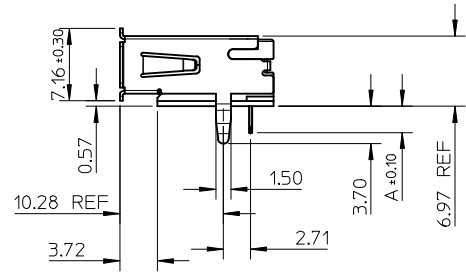
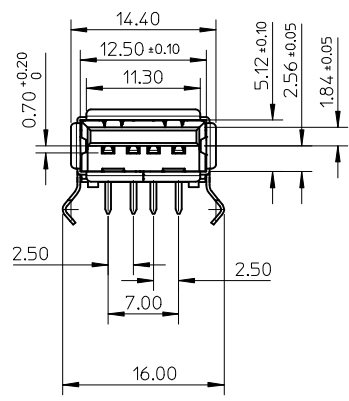


PCB LAYOUT (TOP VIEW)



- NOTES:
- MATERIAL:
METAL SHELL: COPPER ALLOY.
HOUSING: SEE CHART. 30% GLASS FIBER FILLED, UL94-V0.
TERMINAL: PHOSPHOR BRONZE
 - TERMINAL:
CONTACT AREA: GOLD FLASH.
(b) GOLD (Au), THICKNESS=0.76µM/ 30µMCH MINIMUM.
SOLDER TAIL: TIN PLATED, THICKNESS=1.9µM/ 75µMCH MINIMUM.
UNDER PLATED NICKEL (Ni), THICKNESS=1.25µM/ 50µMCH MINIMUM.
METAL SHELL: SEE CHART.
 - RECOMMENDED PCB THICKNESS: SEE CHART
 - PRODUCT SPECIFICATION: FOR IR REFER TO PS-67643-002
FOR NON IR REFER TO PS-67643-003
 - TORQUE FORCE SPEC: 2.50kg-cm Min, MEASURED AT BROKEN POINT.
 - TEST SUMMARY: FOR IR REFER TO TS-67643-002
FOR NON IR REFER TO TS-67643-003
 - PACKAGE: REFER TO PK-67643-002
 - LEAD FREE AND ROHS COMPLIANT PRODUCT

| REVISE TO BRIGHT TIN EC NO: SH2014-0532 DRWN: FYANG05 CHKD: APPR: RZHANG 2014/06/17 2014/08/11 | QUALITY SYMBOLS | GENERAL TOLERANCES (UNLESS SPECIFIED) | DIMENSION STYLE | SCALE | DESIGN UNITS | THIRD ANGLE PROJECTION | | | | | | | | | | | | | | | | | | |
|--|--|---|---|-------|--------------|------------------------|-------|-------|----------|-------|-------|----------|--------|-------|---------|--------|-------|---------|-------|-------|---------|-----|--------|--|
| | $\nabla_A = 0$ $\nabla_C = 0$ $\nabla_P = 0$ | <table border="1"> <thead> <tr> <th></th> <th>mm</th> <th>INCH</th> </tr> </thead> <tbody> <tr> <td>4 PLACES</td> <td>± ---</td> <td>± ---</td> </tr> <tr> <td>3 PLACES</td> <td>± ---</td> <td>± ---</td> </tr> <tr> <td>2 PLACES</td> <td>± 0.25</td> <td>± ---</td> </tr> <tr> <td>1 PLACE</td> <td>± 0.25</td> <td>± ---</td> </tr> <tr> <td>0 PLACE</td> <td>± ---</td> <td>± ---</td> </tr> </tbody> </table> | | mm | INCH | 4 PLACES | ± --- | ± --- | 3 PLACES | ± --- | ± --- | 2 PLACES | ± 0.25 | ± --- | 1 PLACE | ± 0.25 | ± --- | 0 PLACE | ± --- | ± --- | MM ONLY | 2:1 | METRIC | |
| | | mm | INCH | | | | | | | | | | | | | | | | | | | | | |
| | 4 PLACES | ± --- | ± --- | | | | | | | | | | | | | | | | | | | | | |
| 3 PLACES | ± --- | ± --- | | | | | | | | | | | | | | | | | | | | | | |
| 2 PLACES | ± 0.25 | ± --- | | | | | | | | | | | | | | | | | | | | | | |
| 1 PLACE | ± 0.25 | ± --- | | | | | | | | | | | | | | | | | | | | | | |
| 0 PLACE | ± --- | ± --- | | | | | | | | | | | | | | | | | | | | | | |
| DESCRIPTION | DRAWN BY: FYANG05 DATE: 2013/12/12 CHECKED BY: DATE: APPROVED BY: DATE: | TITLE | USB A TYPE RECT SINGLE RA THROUGH HOLE W/O FLG LEAD-FREE molex | | | | | | | | | | | | | | | | | | | | | |
| REV | MATERIAL NO. SEE TABLE DRAFT WHERE APPLICABLE MUST REMAIN WITHIN DIMENSIONS | DOCUMENT NO. SD-67643-003 SHEET NO. 1 OF 2 | THIS DRAWING CONTAINS INFORMATION THAT IS PROPRIETARY TO MOLEX INCORPORATED AND SHOULD NOT BE USED WITHOUT WRITTEN PERMISSION | | | | | | | | | | | | | | | | | | | | | |

| P/N | HOUSING MATERIAL | COLOR | CONTACT PLATING | METAL SHELL PLATING | REMARK |
|---------------|------------------------|-----------|-----------------|--|-----------------|
| 67643-0910 | POLYESTER | BLACK | GOLD FLASH | BRIGHT TIN PLATED. THICKNESS= 1.25MM/50MNCH MINIMUM UNDER PLATE:NICKEL (Ni). | NON IR RPOCESEE |
| 67643-2910 | HIGH TEMPERATURE NYLON | BLACK | | | FOR IR |
| 67643-3910 | HIGH TEMPERATURE NYLON | WHITE | REFLOW PROCESS | | |
| 67643-2911 | HIGH TEMPERATURE NYLON | BLACK | 0.76MM/30MNCH | | FOR IR |
| 67643-3911 | HIGH TEMPERATURE NYLON | WHITE | | | REFLOW PROCESS |
| PCB THICKNESS | | 1.60±0.05 | | | |
| DIMENSION *A* | | 2.60 | | | |

| P/N | HOUSING MATERIAL | COLOR | CONTACT PLATING | METAL SHELL PLATING | REMARK |
|---------------|------------------------|-----------|-----------------|--|----------------|
| 67643-1930 | HIGH TEMPERATURE NYLON | WHITE | GOLD FLASH | BRIGHT TIN PLATED. THICKNESS= 1.25MM/50MNCH MINIMUM UNDER PLATE:NICKEL (Ni). | REFLOW PROCESS |
| PCB THICKNESS | | 1.20±0.05 | | | |
| DIMENSION *A* | | 2.00 | | | |

| | | | | | | | |
|--|-------------------------------|---------------------------------------|-----------------------------------|--|-------------------------------|--|---------------------|
| SEE SHEET1 EC NO: SHZ014-0532 DRWN:FYANG05 2014/06/17 CHKD: APPR:RZHANG 2014/08/11 | QUALITY SYMBOLS | GENERAL TOLERANCES (UNLESS SPECIFIED) | DIMENSION STYLE MM ONLY | SCALE 2:1 | DESIGN UNITS METRIC | THIRD ANGLE PROJECTION | |
| | $F_A=0$ $F_G=0$ $F_P=0$ | mm | INCH | DRAWN BY FYANG05 | DATE 2013/12/12 | TITLE USB A TYPE RECT SINGLE RA THROUGH HOLE W/O FLG LEAD-FREE | |
| | | 4 PLACES | ± --- | ± --- | CHECKED BY | | |
| | | 3 PLACES | ± --- | ± --- | APPROVED BY | | DATE |
| | 2 PLACES | ± 0.25 | ± --- | MATERIAL NO. SEE TABLE | | DOCUMENT NO. SD-67643-003 | |
| | 1 PLACE | ± 0.25 | ± --- | | | | SHEET NO. 2 OF 2 |
| | 0 PLACE | ± --- | ± --- | DRAFT WHERE APPLICABLE MUST REMAIN WITHIN DIMENSIONS | | | |
| | | ANGULAR ± 3 ° | SIZE A3 | THIS DRAWING CONTAINS INFORMATION THAT IS PROPRIETARY TO MOLEX INCORPORATED AND SHOULD NOT BE USED WITHOUT WRITTEN PERMISSION | | | |