



3425 MHz MonoBlock Ceramic BPF

ANATECH ELECTRONICS INC
RF & Microwave Filters & Products

Part Number: AM3425B1076



Electrical specifications

Center Frequency: 3425 MHz
Bandwidth: 50 MHz
Input / Output Impedance: 50 Ohms
Passband: 3550–3600 MHz
Passband Insertion Loss:
Passband Ripple: 3550-3600 MHz 0.50 dB
Passband Return Loss: 3550-3600 MHz -14.00 dB
Rejection: 0.1 – 3350 MHz -40.00 dB
Rejection 2: 3475 MHz -10.00 dB
Rejection 3: 3675 MHz -10.00 dB
Rejection 4: 3850-5800 MHz -40.00 dB
Power Handling: 1 Watt max

Mechanical

Mounting Method: SMT
Dimensions: 11.75 x 6.9 x 4.6 mm

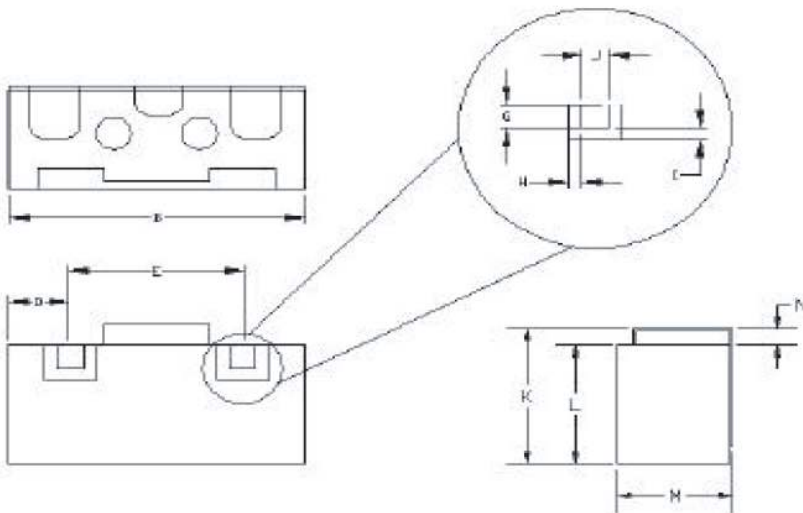
Environmental

Operating Temperature: -40 C to +85 C
Storage Temperature: -50 C to +90 C

This product is RoHs compliant.



Outline Drawings:



Dim	Nominal (mm)	Tolerance (mm) +/- or max
A		
B	11.75	Max
C		
D	2.41	0.13
E	6.6	0.13
F		
G	1.02	0.13
H	0.51	0.13
I	0.51	0.13
J	1.02	0.13
K	6.9	Max
L	5.9	Max
N	1.03	0.13
M	4.6	Max



ANATECH ELECTRONICS INC
RF & Microwave Filters & Products

3425 MHz MonoBlock Ceramic BPF

Part Number: AM3425B1076



Response Plot:

