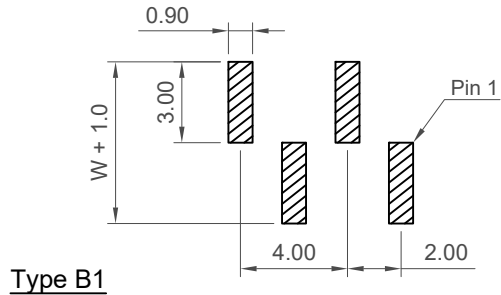
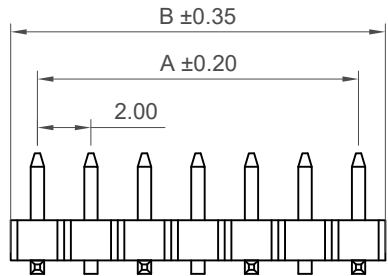


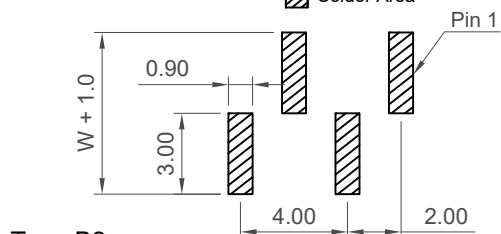
Type B2



Type B1

Recommended PCB Layout

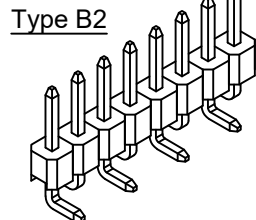
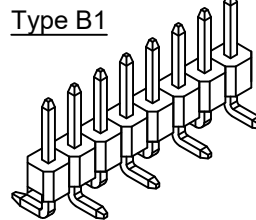
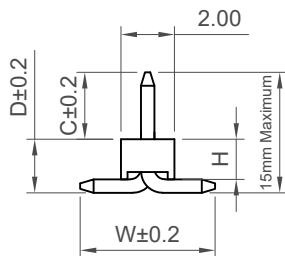
▨ Solder Area



Type B2

Recommended PCB Layout

▨ Solder Area



| No. of Contacts | Dimensions |      |
|-----------------|------------|------|
|                 | A          | B    |
| 3               | 4.0        | 6.0  |
| 4               | 6.0        | 8.0  |
| 5               | 8.0        | 10.0 |
| 6               | 10.0       | 12.0 |
| 7               | 12.0       | 14.0 |
| 8               | 14.0       | 16.0 |
| 9               | 16.0       | 18.0 |
| 10              | 18.0       | 20.0 |
| 11              | 20.0       | 22.0 |
| 12              | 22.0       | 24.0 |
| 13              | 24.0       | 26.0 |
| 14              | 26.0       | 28.0 |
| 15              | 28.0       | 30.0 |
| 16              | 30.0       | 32.0 |
| 17              | 32.0       | 34.0 |
| 18              | 34.0       | 36.0 |
| 19              | 36.0       | 38.0 |
| 20              | 38.0       | 40.0 |
| 21              | 40.0       | 42.0 |

| No. of Contacts | Dimensions |      |
|-----------------|------------|------|
|                 | A          | B    |
| 22              | 42.0       | 44.0 |
| 23              | 44.0       | 46.0 |
| 24              | 46.0       | 48.0 |
| 25              | 48.0       | 50.0 |
| 26              | 50.0       | 52.0 |
| 27              | 52.0       | 54.0 |
| 28              | 54.0       | 56.0 |
| 29              | 56.0       | 58.0 |
| 30              | 58.0       | 60.0 |
| 31              | 60.0       | 62.0 |
| 32              | 62.0       | 64.0 |
| 33              | 64.0       | 66.0 |
| 34              | 66.0       | 68.0 |
| 35              | 68.0       | 70.0 |
| 36              | 70.0       | 72.0 |
| 37              | 72.0       | 74.0 |
| 38              | 74.0       | 76.0 |
| 39              | 76.0       | 78.0 |
| 40              | 78.0       | 80.0 |

Specifications

Material

Insulator material:  
Standard  
Polyamide, Nylon 6T, UL 94V-0  
Options:  
Polymer, LCP, UL 94V-0  
Contact Terminal : Copper Alloy

Plating

See Ordering Grid

Electrical

Current Rating: 2 Amp per pin  
Contact Resistance: 20 mΩ max.  
Insulation Resistance: 1000 MΩ min.  
Dielectric Withstand Voltage: 500 V AC

Mechanical & Environmental

Operating Temperature: -40°C to +105°C

Soldering Process

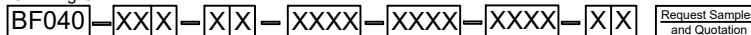
Nylon 6T (Standard) -  
IR Reflow: 260°C for 10 sec.  
Manual Solder: 350°C for 3-5 sec  
LCP (Option) -  
IR Reflow: 260°C for 10 sec.  
Manual Solder: 350°C for 3-5 sec

Mates with (Subject to pin length)

BF070 BF085 BF086 BF087 BF088 BF090

BF085 Recommended mating length 3.00mm

Ordering Grid



No. of Contacts  
03 to 40

Contact Plating

A = Gold Flash All Over (Standard)  
B = Selective Gold Flash Contact Area/  
Tin On Tail  
C = Tin All Over  
G = 10µ" Gold Contact Area/Tin On Tail  
I = 30µ" Gold Contact Area/Tin On Tail  
L = Matte Tin

Insulator Height 'H'

B = 2.00mm (Standard)  
A = 1.50mm

Type

1 = Type B1  
2 = Type B2

Dimension C (1/100mm) (Post Height)

0300 = 3.00mm (Standard)  
0400 = 4.00mm (Standard)  
0600 = 6.00mm (Standard)  
Or specify Dimension C  
eg 0250 = 2.50mm  
(Maximum 0800 = 8.00mm)  
(Minimum 0100 = 1.00mm)

Insulator Material

N = Nylon 6T (Standard)  
L = LCP

Dimension W (1/100mm) (Footprint Width)

0483 = 4.83mm (Standard)  
0500 = 5.00mm (Standard)  
Or specify Dimension W  
eg 0250 = 2.50mm (Tooling charge may apply)

Dimension D (1/100mm) (PCB to Top of Insulator)

0260 = 2.60mm (Standard - Minimum for 'H' = B)  
0210 = 2.10mm (Standard - Minimum for 'H' = A)  
Or specify Dimension D  
eg 0250 = 2.50mm

Packing Options

B = Tape & Reel with Cap (Standard)  
D = Tube  
E = Tube with Cap

|                   |                |  |                      |
|-------------------|----------------|--|----------------------|
| Part Number       |                | Product Description  |                      |
| BF040             |                | 2.00mm Pitch Pin Header                                      |                      |
| Drawing Date      |                | Single Row, Surface Mount                                    |                      |
| 31st October 2007 |                |  |                      |
| By                | CC             | Tolerances (Except as Noted)                                 | Units:               |
| Detail            | BF040<br>E PCN | Length<br>X.X ± 0.38<br>X.XX ± 0.25<br>X.XXX ± 0.13          | Metric (mm)          |
| Revision          | E4             | Angle<br>X° ± 5°<br>X.X° ± 2°<br>X.XX° ± 1°<br>X.XXX° ± 0.5° | 3rd Angle Projection |
| Date              | 26/07/23       |  |                      |



This drawing is confidential and copyright of Global Connector Technology, Ltd (GCT). This drawing must not be copied or disclosed without written consent. E & OE



www.gct.co

|              |              |               |
|--------------|--------------|---------------|
| Not to Scale | Drawn By LYH | Sheet No. 1/1 |
|--------------|--------------|---------------|