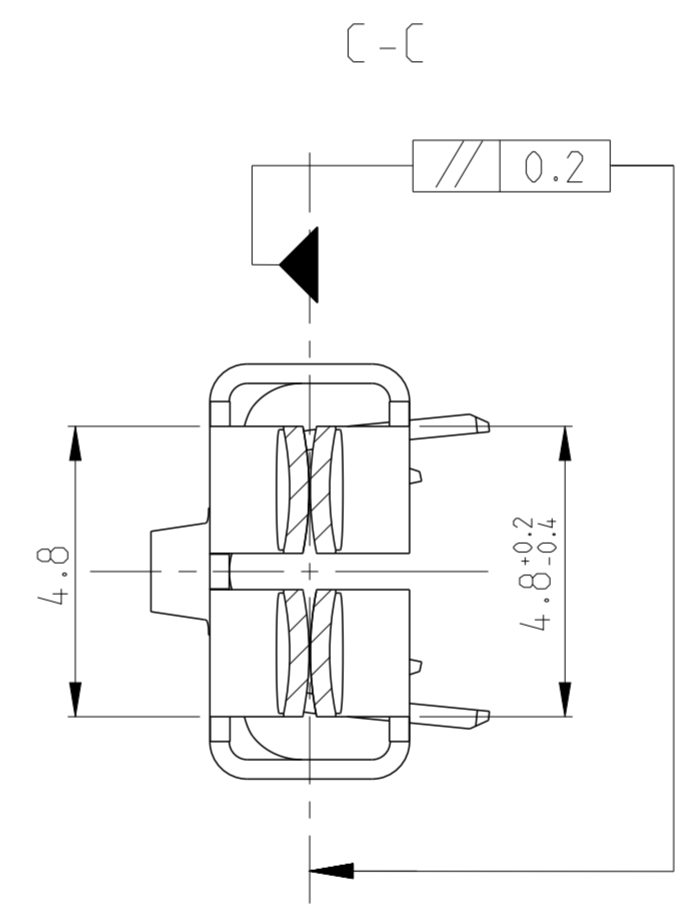
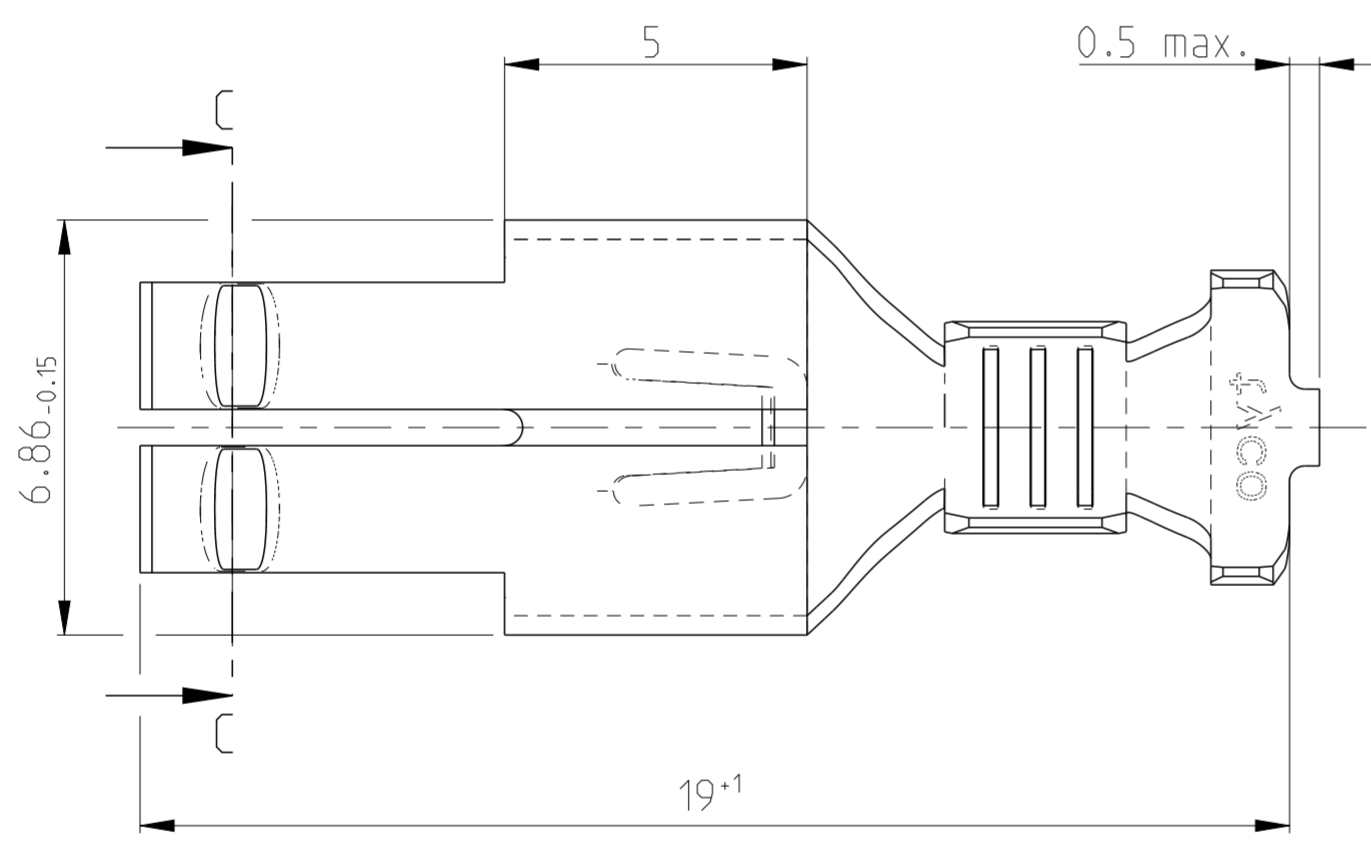
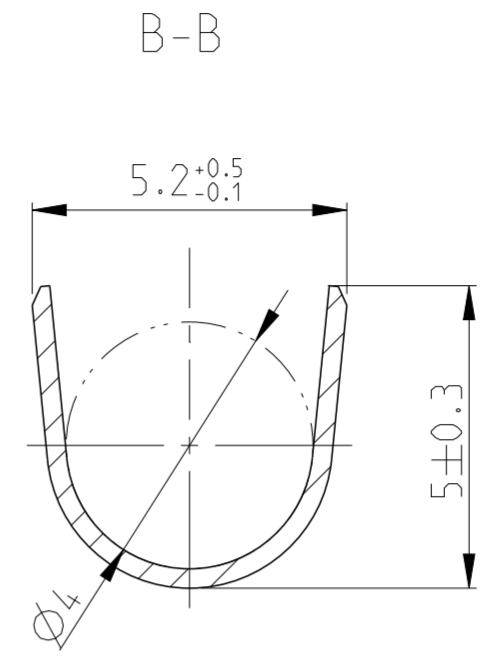
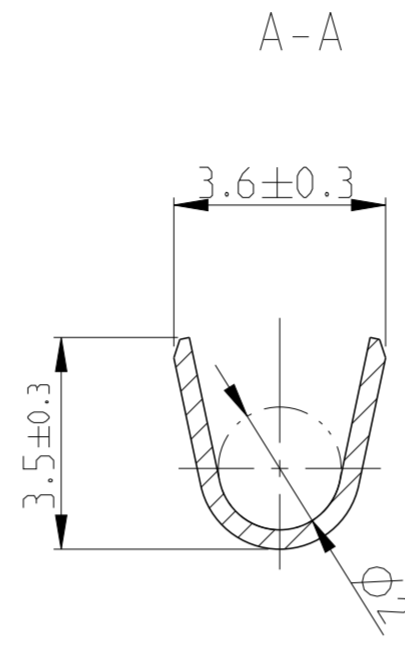
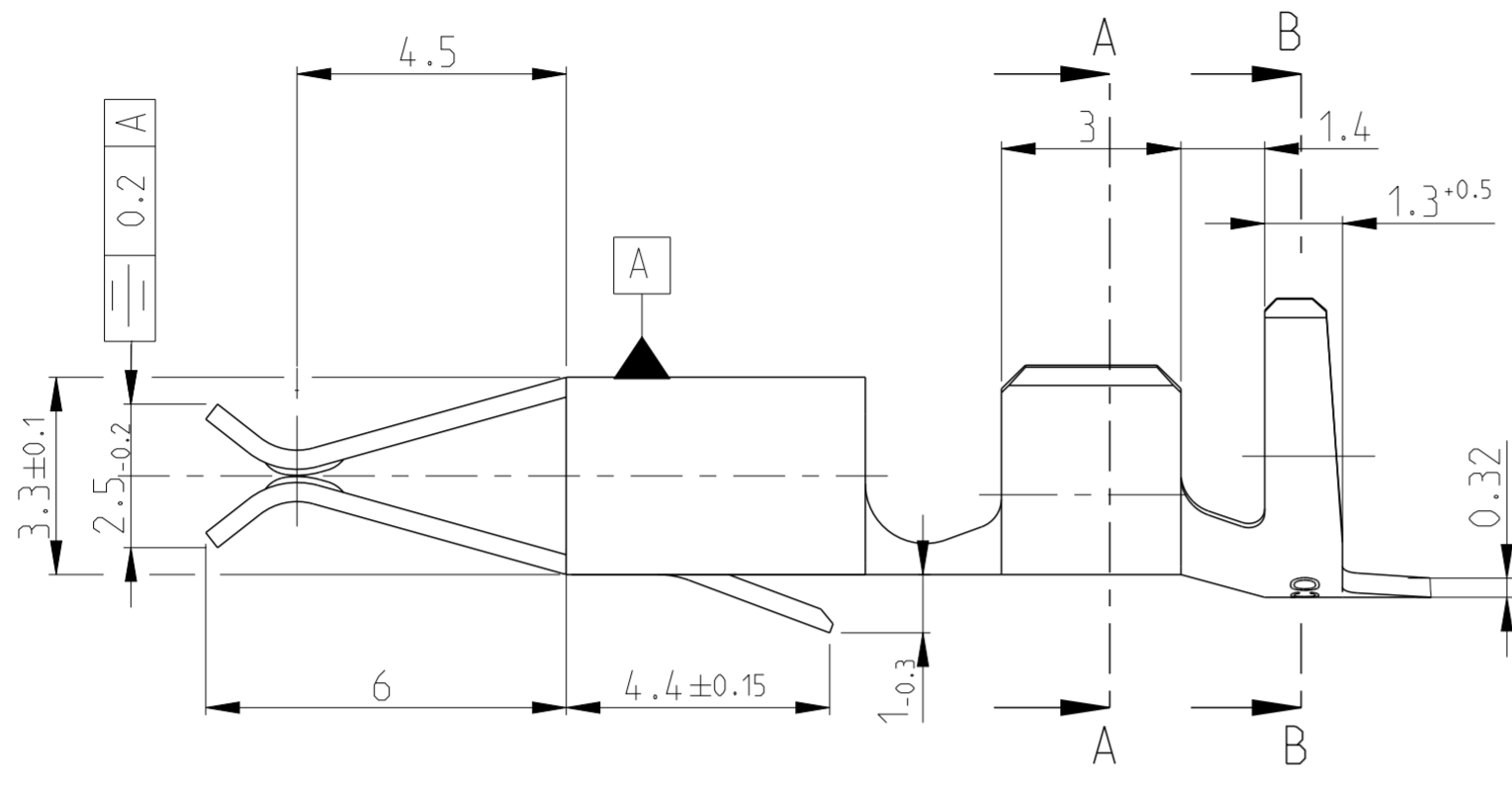


THIS DRAWING IS UNPUBLISHED. RELEASED FOR PUBLICATION 20
 © COPYRIGHT 20 BY - ALL RIGHTS RESERVED.

REVISIONS					
P	LTR	DESCRIPTION	DATE	DWN	APVD
	H1	ECR-14-007191	25JUN2014	SK	JS



Kontakt geeignet fuer
 Drahtgroessenbereich 1.0-2.5 mm²
 Isolationsbereich Ø2.4-3.7mm

OBSOLETE	0-926008-3		H	2.4-3.7	STANDARD - TIMER KONTAKT		vorverzinnt
OBSOLETE	0-926008-2		H	2.4-3.7	STANDARD - TIMER KONTAKT	Bronze	vorverzinnt
	0-926008-1		H	2.4-3.7	STANDARD - TIMER KONTAKT	Messing	vorverzinnt
OBSOLETE		0-926006-3	H	2.4-3.7	STANDARD - TIMER KONTAKT	Kupfereisen	vorverzinnt
OBSOLETE		0-926006-2	H	2.4-3.7	STANDARD - TIMER KONTAKT	Bronze	vorverzinnt
		0-926006-1	H	2.4-3.7	STANDARD - TIMER KONTAKT	Messing	vorverzinnt
	EINZELAUSFUHRUNG	BANDWARE	REV	ISOL. BEREICH	BENENNUNG EINZELTEIL	WERKSTOFF	OBERFLACHE

THIS DRAWING IS A CONTROLLED DOCUMENT.

DWN	Goerke	23DEC1987
CHK	Bitsch	26JUN2014
APVD	Bleicher, M.	12JUN07
PRODUCT SPEC		
APPLICATION SPEC		
WEIGHT		
Customer Drawing		

DIMENSIONS: mm
 TOLERANCES UNLESS OTHERWISE SPECIFIED:
 0 PLC ±0.2
 1-PLC ±0.2
 2-PLC ±0.2
 3-PLC ±0.2
 4-PLC ±0.2
 ANGLES ±°
 FINISH -

STE TE Connectivity
 NAME: STANDARD TIMER CONTACT
 SIZE: A2
 CAGE CODE: -
 DRAWING NO: C-926006
 RESTRICTED TO: -
 SCALE: 8:1
 SHEET: 1 OF 1
 REV: H1