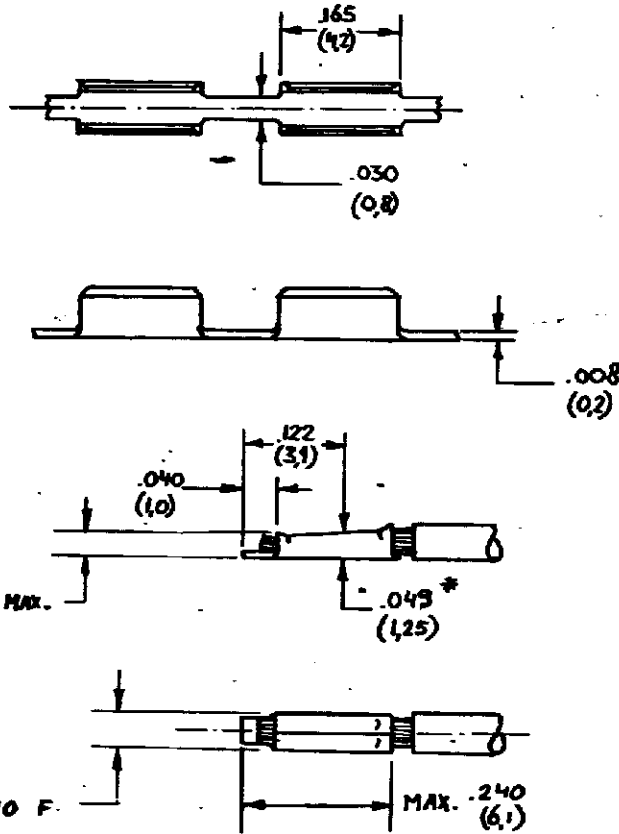


DRAWING MADE IN AMERICAN PROJECTION

NUMBER
C-160725



NOTES: 1 FOR PRINTBOARD HOLE $.049 \pm .004$ ($1.25 \pm .01$) DIA.
FOR AW622 WIRE (0.32 mm^2)

2 REELED WITH PAPER.

3 OBSOLETE PARTS: OBSOLETE CIS
STREAMLINING PER D.RENAUD/D.SINISI

INCH DIMENSIONS IN () IN. DO NOT SCALE PRINT

CUSTOMER COPY FOR REFERENCE ONLY



AMP - HOLLAND N.V.
's-Hertogenbosch

160725-2A	3	BRASS	UNPLATED
160725-1A		BRASS	Sn OVER Ni
ORDER NO.	MATERIAL	PLATING	
BY A.BUNEN 16.5.72	DATE	DE/	DATE
CHK	DATE	APP	DATE
	AEG		25/09/09

TYPE RANGE 16-22 AWG (0.2-0.25 mm ²)	WIRE RANGE —	WIRE USED —	SCALE 5:1	SIZE A	NO C-160725	REV K1
NAME SOLDER SPLICE						

AMP 2504