

CUSTOMER PRINT

PART NUMBER: CARA16280XPPXXX90

NOTES:

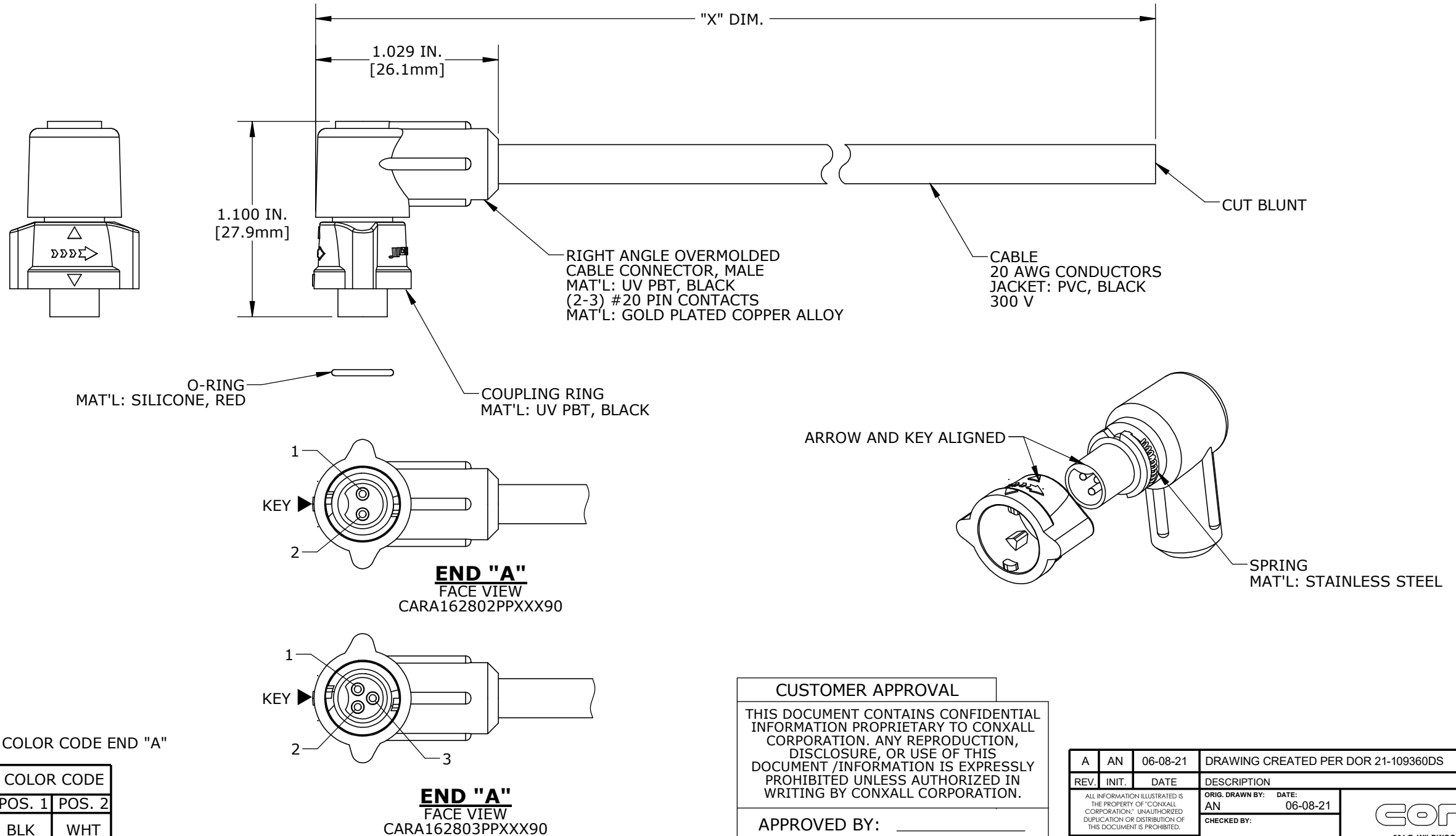
1. FINISHED CABLE ASSEMBLY TO BE COILED
2. OVERMOLD BOOT MATERIAL: UV PBT, BLACK
3. ELECTRICAL TEST: 100% CONTINUITY
4. ALL DIMENSIONS ARE REFERENCE ONLY EXCEPT WHEN NOTED WITH TOLERANCE

ASS'Y P/N	NO. OF POS.
CARA162802PPXXX90	2
CARA162803PPXXX90	3
CARA16280XPPXXX90	

CABLE LENGTH IN "INCHES"
NO. OF POSITIONS

ASS'Y P/N	"X" DIM.
CARA162802PP03990	3 FT. 3 1/2 IN. ± 2 IN. [1M ±50.8mm]
CARA162803PP03990	
CARA162802PP07990	6 FT. 7 IN. ± 2 IN. [2M ±50.8mm]
CARA162803PP07990	
CARA162802PP19790	16 FT. 5 IN. ± 4 IN. [5M ±101.6mm]
CARA162803PP19790	
CARA162802PP39490	32 FT. 9 3/4 IN. ± 8 IN. [10M ±203.2mm]
CARA162803PP39490	
CARA16280XPPXXX90	

CABLE LENGTH IN "INCHES"
NO. OF POSITIONS



ASSY P/N	CABLE	COLOR CODE END "A"		
CARA162802PPXXX90	2/20 AWG O.D. 0.215 REF	COLOR CODE		
		POS. 1	POS. 2	
CARA162803PPXXX90	3/20 AWG O.D. 0.220 REF	WIRE COLOR CODE		
		POS. 1	POS. 2	POS. 3
		BLK	WHT	GRN

DIMENSIONS IN BRACKETS [] ARE METRIC

CUSTOMER APPROVAL
THIS DOCUMENT CONTAINS CONFIDENTIAL INFORMATION PROPRIETARY TO CONXALL CORPORATION. ANY REPRODUCTION, DISCLOSURE, OR USE OF THIS DOCUMENT /INFORMATION IS EXPRESSLY PROHIBITED UNLESS AUTHORIZED IN WRITING BY CONXALL CORPORATION.
APPROVED BY: _____
DATE: _____

RoHS COMPLIANT

REV.	INIT.	DATE	DESCRIPTION																				
A	AN	06-08-21	DRAWING CREATED PER DOR 21-109360DS																				
			<table border="1"> <tr> <td>ORIG. DRAWN BY:</td> <td>DATE:</td> </tr> <tr> <td>AN</td> <td>06-08-21</td> </tr> <tr> <td>CHECKED BY:</td> <td></td> </tr> <tr> <td>APPROVED BY:</td> <td></td> </tr> <tr> <td>SCALE:</td> <td>SIZE:</td> <td>SHEET:</td> </tr> <tr> <td>NTS</td> <td>B</td> <td>1 OF 1</td> </tr> <tr> <td>FILE:</td> <td>DIRECTORY:</td> <td>PART NUMBER:</td> </tr> <tr> <td>CARA16280XPPXXX90</td> <td>SLW</td> <td>CARA16280XPPXXX90</td> </tr> </table>	ORIG. DRAWN BY:	DATE:	AN	06-08-21	CHECKED BY:		APPROVED BY:		SCALE:	SIZE:	SHEET:	NTS	B	1 OF 1	FILE:	DIRECTORY:	PART NUMBER:	CARA16280XPPXXX90	SLW	CARA16280XPPXXX90
ORIG. DRAWN BY:	DATE:																						
AN	06-08-21																						
CHECKED BY:																							
APPROVED BY:																							
SCALE:	SIZE:	SHEET:																					
NTS	B	1 OF 1																					
FILE:	DIRECTORY:	PART NUMBER:																					
CARA16280XPPXXX90	SLW	CARA16280XPPXXX90																					



601 E. WILDWOOD VILLA PARK, IL 60181
TITLE: CABLE ASSEMBLY (2-3) #20 PIN CONTACTS INSTA-CLICK™ MICRO-CON-X STANDARD PRODUCT

ALL UNITS ARE IN FEET, INCHES, FRACTIONS OF INCHES AND DECIMALS.
- CRITICAL CHARACTERISTIC FLAG PER SPEC. XXXX