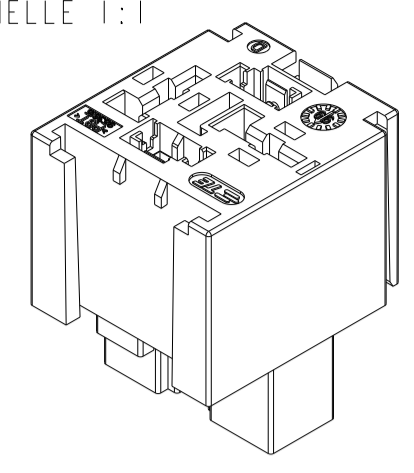


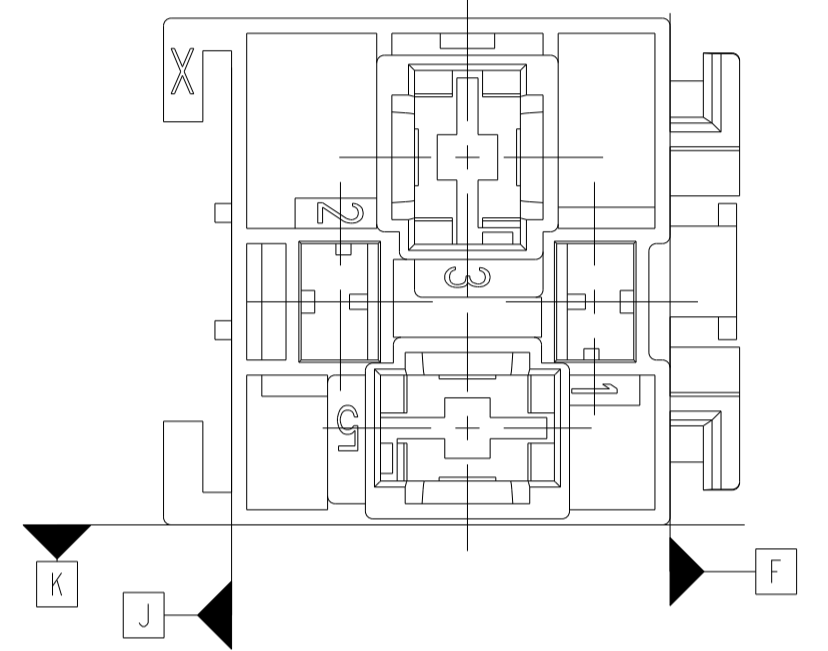
**MODULE SUPPORT RELAIS
AVEC ALVEOLES DE PUISSANCE
POUR CONTACT
"MAXI POWER TIMER"**

ECHELLE 1:1

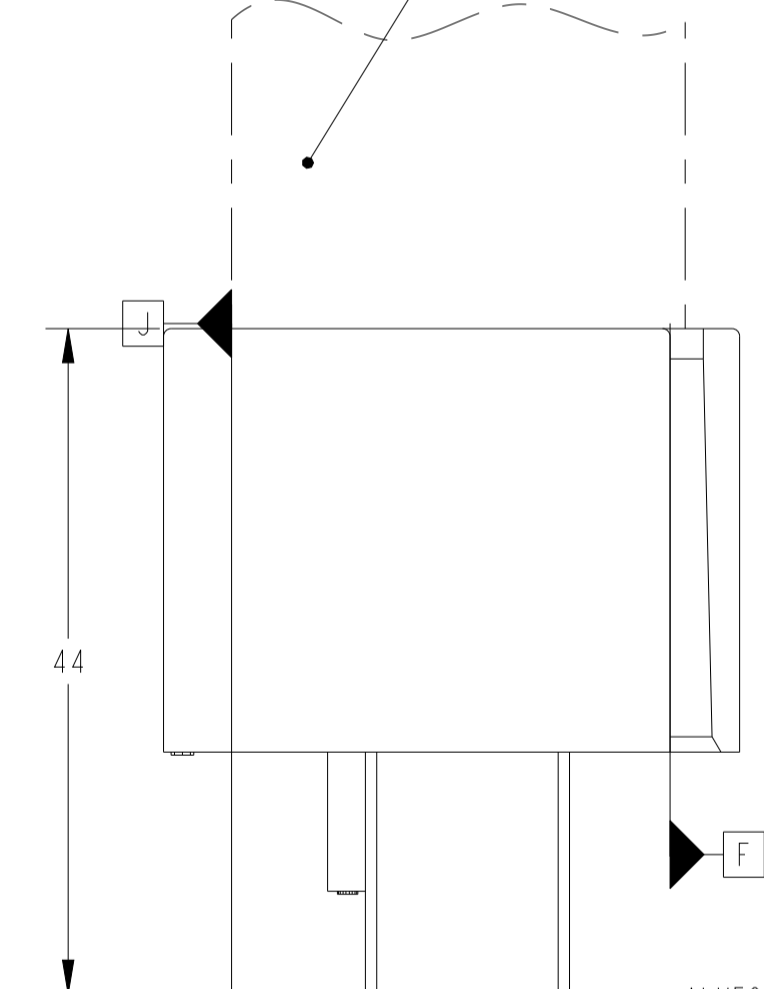


**HOLDER FOR RELAY
WITH POWER CAVITY
FOR TERMINAL
"MAXI POWER TIMER"**

MASSE : 19 g weight: 19g	NOIR BLACK	Support Relais 70A CONTACT MPT Holder for relay 70A MPT TERMINAL	2-953615-2
	NATUREL NATURAL	Support Relais 70A CONTACT MPT Holder for relay 70A MPT TERMINAL	2-953615-1
	VIOLET PURPLE	Support Relais 50-60A CONTACT MPT Holder for relay 50-60A MPT TERMINAL	1-953615-2
	ROUGE RED	Support Relais 50-60A CONTACT MPT Holder for relay 50-60A MPT TERMINAL	1-953615-1
COULEUR COLOR	DESCRIPTION DESIGNATION	REFERENCE TYCO ELECTRONICS TYCO ELECTRONICS PART NUMBER	

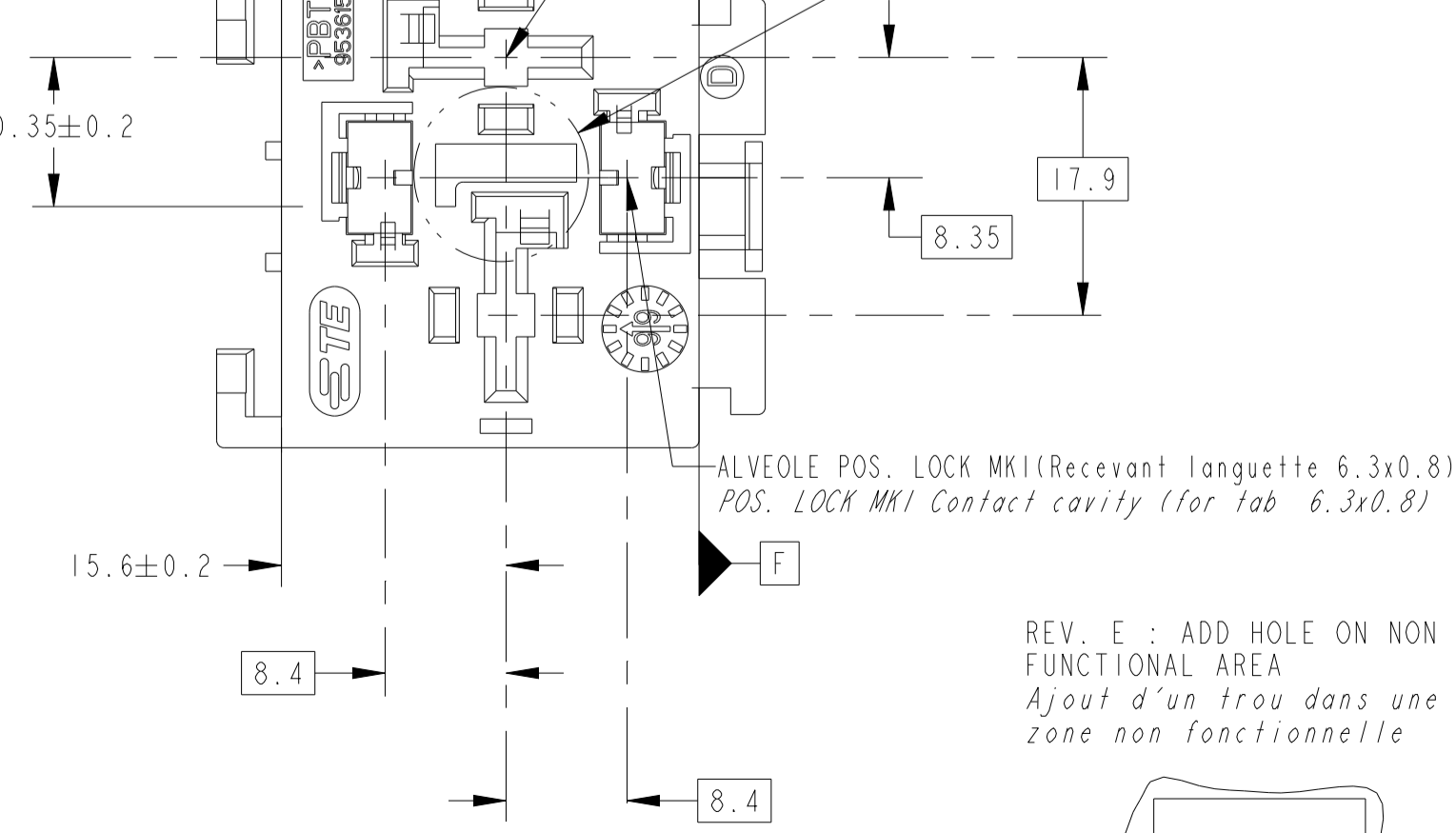


RELAIS 50 , 60 OU 70 A
AVEC LANGUETTES DE PUISSANCE 8x1 ou 9.5x1.2
RELAY 50 , 60 OR 70 A
WITH TAB POWER 8x1 OR 9.5x1.2



ALVEOLE MPT(Recevant languette 8x1 ou 9.5x1.2)
MPT Contact cavity(for tab 8x1 or 9.5x1.2)

VOIR DETAIL A



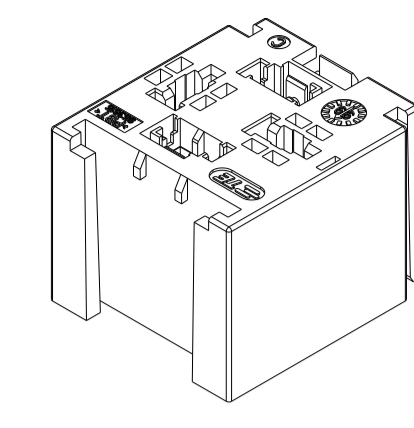
ALVEOLE POS. LOCK MK1(Recevant languette 6.3x0.8)
POS. LOCK MK1 Contact cavity(for tab 6.3x0.8)

REV. E : ADD HOLE ON NON FUNCTIONAL AREA
Ajout d'un trou dans une zone non fonctionnelle

DETAIL A
ECHELLE 3:1

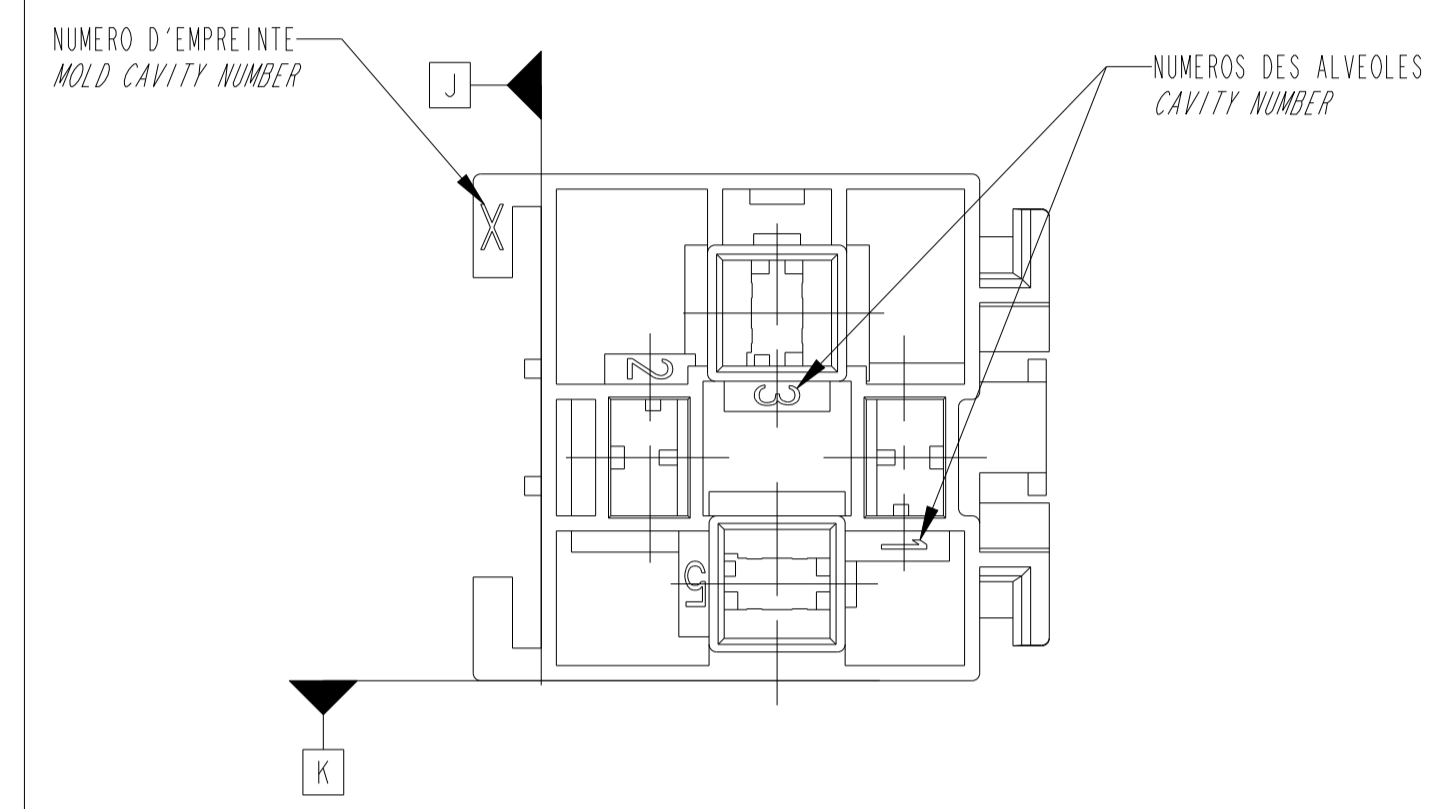
**MODULE SUPPORT RELAIS
AVEC ALVEOLES DE PUISSANCE
POUR CONTACT
"STANDARD POWER TIMER"**

ECHELLE 1:1

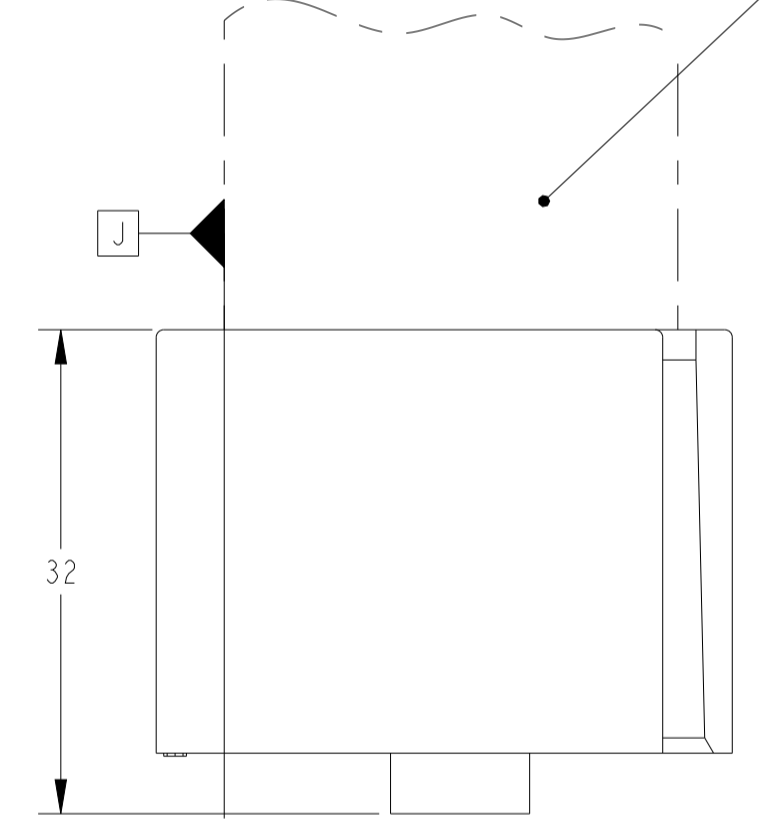


**HOLDER FOR RELAY
WITH POWER CAVITY
FOR TERMINAL
"STANDARD POWER TIMER"**

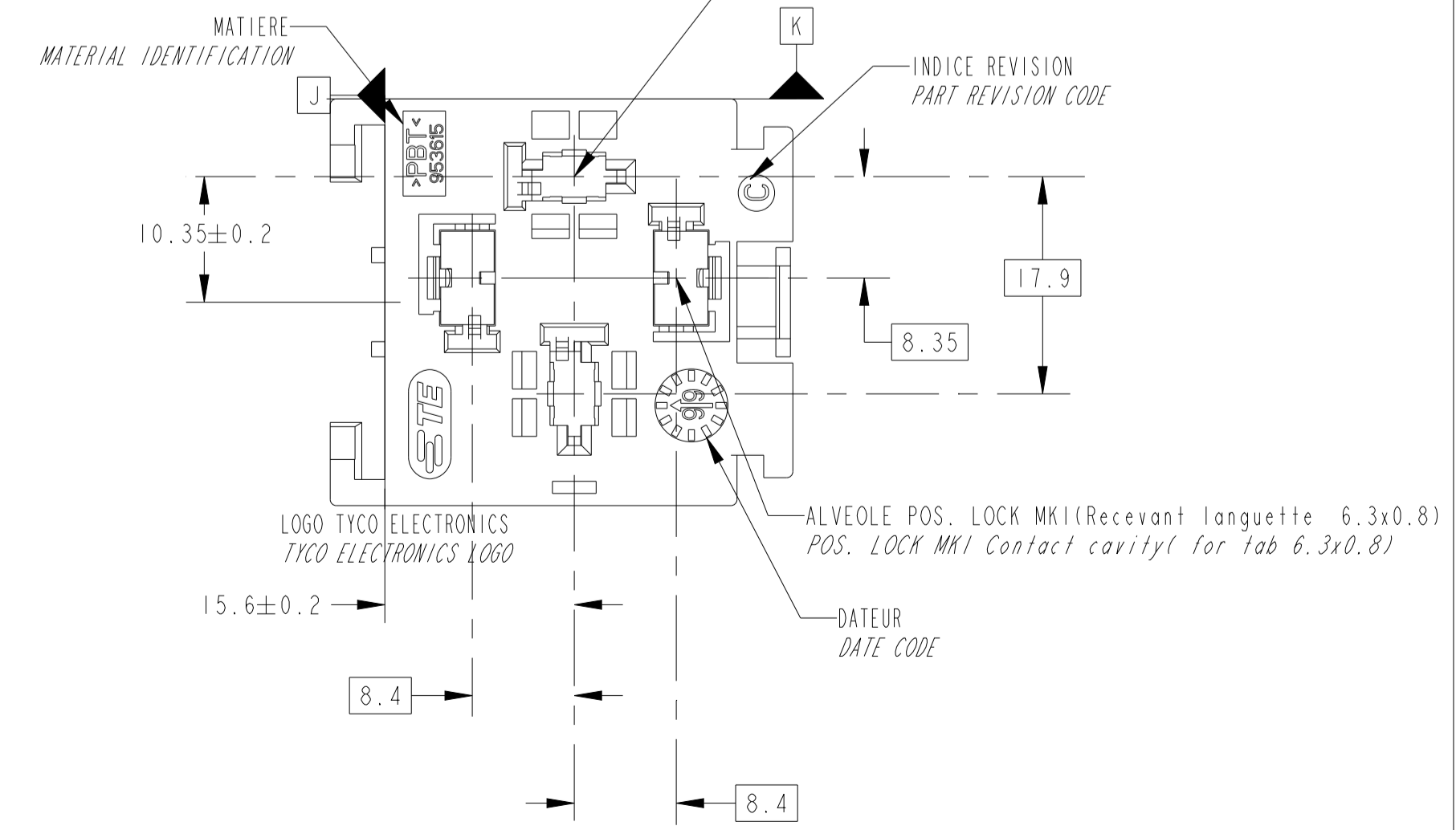
MASSE : 16 g weight: 16g	VIOLET PURPLE	Support Relais 50-60A CONTACT SPT Holder for relay 50-60A SPT TERMINAL	953615-2
	ROUGE RED	Support Relais 50-60A CONTACT SPT Holder for relay 50-60A SPT TERMINAL	953615-1
COULEUR COLOR	DESCRIPTION DESIGNATION	REFERENCE TYCO ELECTRONICS TYCO ELECTRONICS PART NUMBER	



RELAIS 50 ou 60 A
AVEC LANGUETTES DE PUISSANCE 8x1
RELAY 50 , 60 A
WITH TAB POWER 8x1

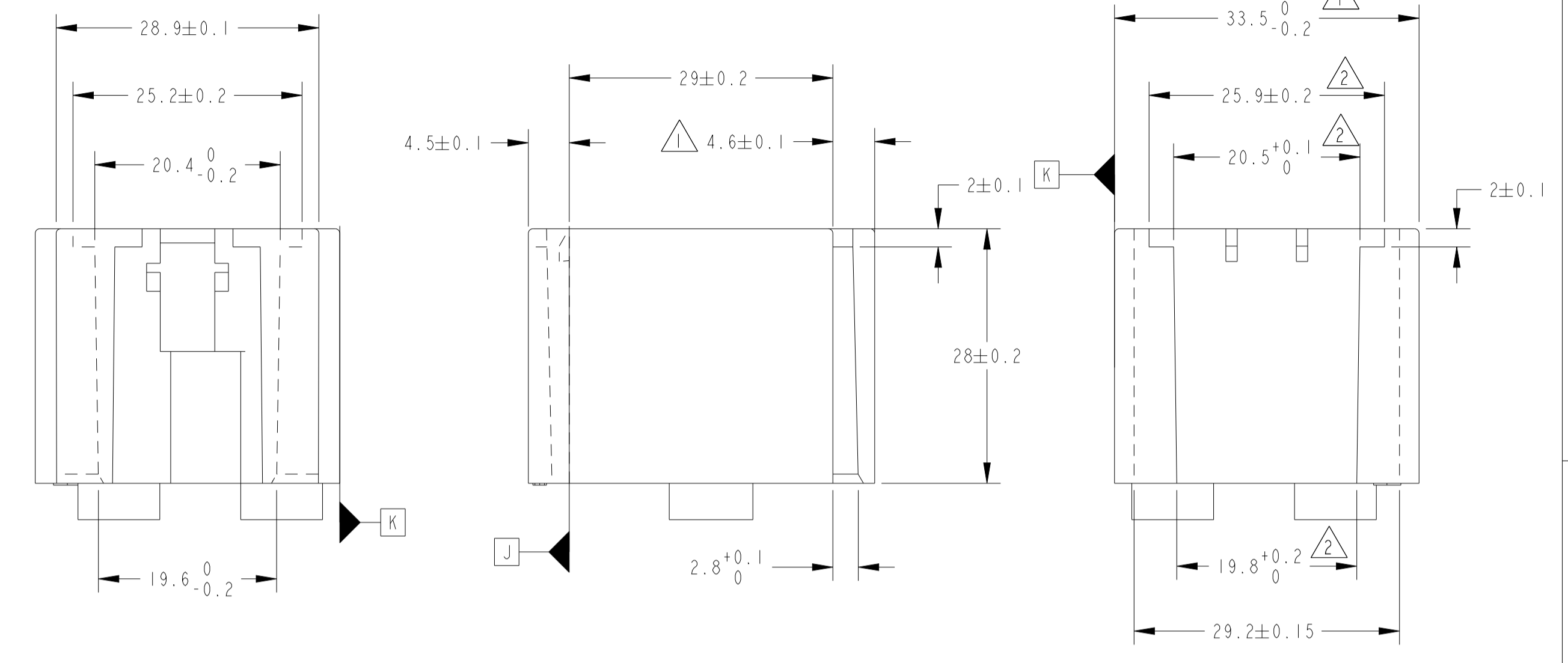


ALVEOLE SPT(Recevant languette 8x1)
SPT Contact cavity(for tab 8x1)



ALVEOLE POS. LOCK MK1(Recevant languette 6.3x0.8)
POS. LOCK MK1 Contact cavity(for tab 6.3x0.8)

OBSOLETE



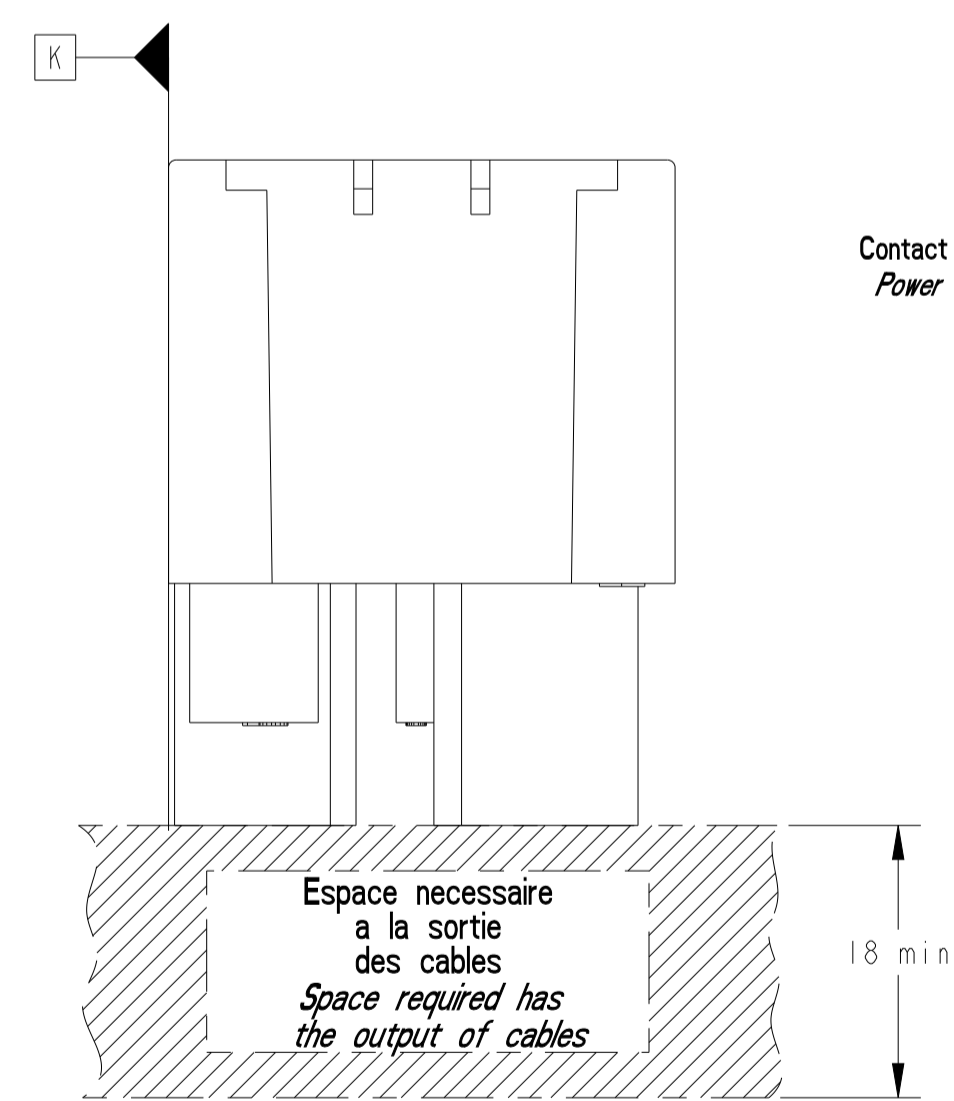
- NOTES:
- 1 PINCEMENT ADMIS: 0.2 MAX PINCHING ACCEPTED: 0.2 MAX
 - 2 PINCEMENT ADMIS: 0.25 MAX PINCHING ACCEPTED: 0.25 MAX

CLIPS POUVANT ETRE UTILISES RECEPTACLE TO BE USE	
DESCRIPTION DESIGNATION	REFERENCE TYCO ELECTRONICS TYCO ELECTRONICS PART NUMBER
POS. LOCK MK1 0.5-1.5mm	160759-3
POS. LOCK MK1 0.7-2mm	154718-3
POS. LOCK MK1 2.5-4mm	154717-3
SPT 5-7mm ²	185283-1
MPT 4-6mm ²	962930-1
MPT 6-10mm ²	962932-1

Alimentation de la Bobine
Power of self induction

Contact de Puissance pour module Ref : 953615-x
Power Terminal for relay holder Ref : 953615-x

Contact de Puissance pour module Ref : 1-953615-x et 2-953615-x
Power Terminal for relay holder Ref : 1-953615-x et 2-953615-x



Espace necessaire
a la sortie
des cables
Space required has
the output of cables

INTERFACE POUR LA FIXATION DES MODULES SUPPORT RELAIS : 208-15540
INTERFACE FOR FIXING RELAY HOLDER : 208-15540

RELAY HOLDER
50 60 AND 70 A
SPT / MPT TERMINAL

THIS DRAWING IS A CONTROLLED DOCUMENT. CE PLAN EST UN DOCUMENT CONTROLÉ PAR AMP INCORPORATED. IL EST SOUS LE CONTROLE DE LA DIVISION PRODUCTIONS ET DE LA QUALITE. DIMENSIONS: mm		DW/DESSINE: F. JODON 16APR99 CHK/VERIFIE: JP. PICAUD		TE Connectivity	
TOLERANCES: UNLESS OTHERWISE SPECIFIED: 1. DECIMALES: ±0.1 2. DECIMALES: ±0.2 3. DECIMALES: ±0.3 4. DECIMALES: ±0.5		APVD/APPROUVE: J. J. DE VILLIERS PRODUCT SPEC: 108-15208 SPEC. PRODUCT: 411-15620 APPLICATION SPEC: 411-15620		NAME: MODULE SUPPORT RELAIS 50 60 et 70 Amperes CONTACT DE PUISSANCE : SPT ou MPT	
MATERIAL/MATIERE: PBT		WEIGHT: 19g MASSE APPROX. VOIR TAB. A1		SIZE: 18x15x15 CAGE CODE: 00779 DRAWING NO: 953615	
FINISH/FINITION: VOIR TABLEAU		CUSTOMER DRAWING		SHEET 1 OF 1 FEUILLE 1 DE 1	