

6 5 4 3 2 1

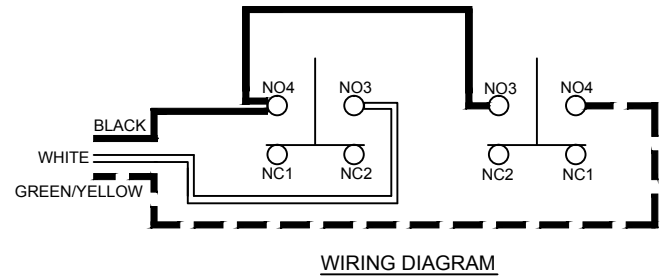
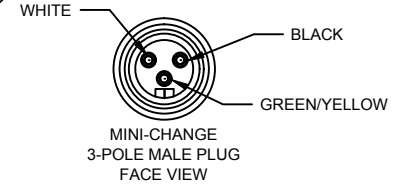
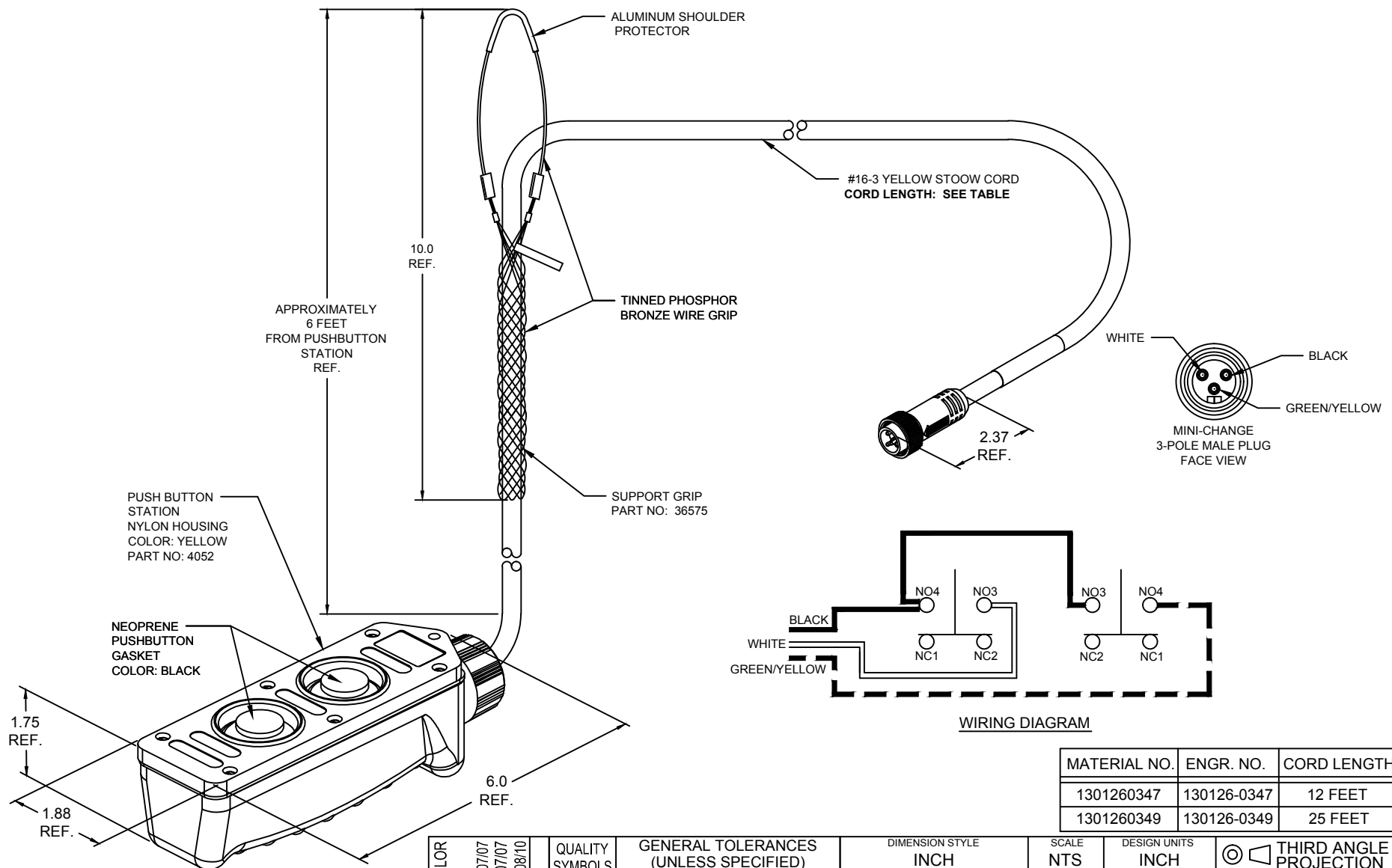
E

D

C

B

A



MATERIAL NO.	ENGR. NO.	CORD LENGTH
1301260347	130126-0347	12 FEET
1301260349	130126-0349	25 FEET

NC FACE VIEW UPDATE COLOR EC NO: IPG2017-0020 DRWN: HRUIZ01 2016/07/07 CHKD: KCOX01 2016/07/07 APPR: HKNEELAN 2013/08/10	DESCRIPTION C	QUALITY SYMBOLS ▽=0 ▽C=0	GENERAL TOLERANCES (UNLESS SPECIFIED)		DIMENSION STYLE INCH		SCALE NTS	DESIGN UNITS INCH	THIRD ANGLE PROJECTION		
		4 PLACES ±--- ±---	mm ±--- INCH ±---	DRAWN BY HRUIZ01	DATE 2013/08/06	TITLE 4052 PENDANT STATION #16-3 STOOV CORD 3 POLE MALE MINI-CHANGE					
		3 PLACES ±--- ±.005	mm ±--- INCH ±.005	CHECKED BY HKNEELAN	DATE 2013/08/07						
		2 PLACES ±--- ±.010	mm ±--- INCH ±.010	APPROVED BY JFMURPHY		DATE 2013/08/10	MOLEX INCORPORATED DOCUMENT NO. SD-130126-063				
1 PLACE ±--- ±.020	mm ±--- INCH ±.020	MATERIAL NO. SEE TABLE		SHEET NO. 1 OF 1							
DRAFT WHERE APPLICABLE MUST REMAIN WITHIN DIMENSIONS			ANGULAR ±1/2°		THIS DRAWING CONTAINS INFORMATION THAT IS PROPRIETARY TO MOLEX INCORPORATED AND SHOULD NOT BE USED WITHOUT WRITTEN PERMISSION						

6 5 4 3 2 1