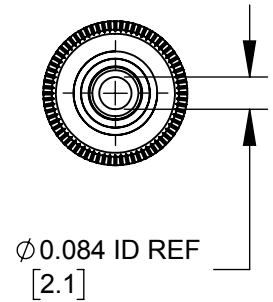
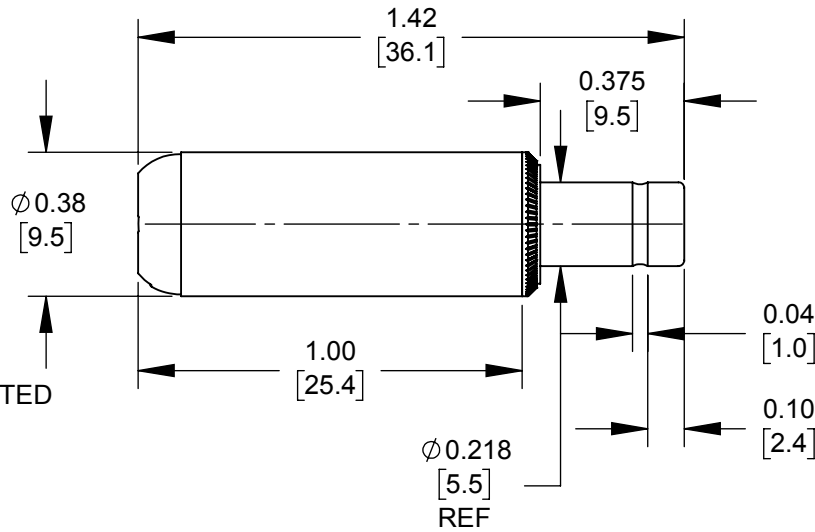
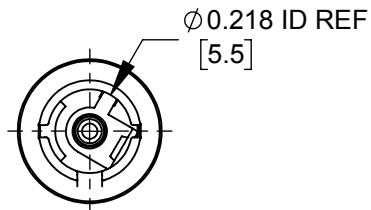


PART NUMBER	HANDLE COLOR
762Z	BLACK
763Z	RED



NOTES:

- MATERIALS:
 CONDUCTORS - COPPER ALLOY, NICKEL PLATED
 TERMINALS - COPPER ALLOY, TIN PLATED
 INSULATORS & HANDLE - THERMOPLASTIC
- THIS PRODUCT IS RoHS COMPLIANT.

CUSTOMER DRAWING

					THIS DRAWING DESCRIBES A DESIGN CONSIDERED PROPRIETARY IN NATURE, DEVELOPED AND MANUFACTURED BY SWITCHCRAFT INC. AND IS RELEASED ON A CONFIDENTIAL BASIS FOR IDENTIFICATION PURPOSES ONLY.								
UNLESS OTHERWISE SPECIFIED 1. ALL DIMENSIONS IN INCHES [mm] - TWO PLACE DECIMALS ±0.02 [0.5] - THREE PLACE DECIMALS ±0.005 [0.13]					SIZE *	WIDTH *	MULT *	LBS/M *	TEMPER *				
					FINISH *				MATERIAL *				
					SPEC No. *				SPEC No. *				
					FIRST USED ON *				SCALE 2:1				
0A	FIRST DRAWN	10/23/19	AM	*	DATE DRAWN	BY	CHKD	APVD					
					10/23/19	AM	*	*					
REV	ECO NUMBER	DATE	BY	APVD	NAME				PART No.				
REVISIONS					DO NOT SCALE DRAWING					SHEET 1 OF 1 762Z-763Z			
					NAME					REV			
					Ø 0.084 [2.1]mm X 0.375 LONG IMPROVED POWER PLUG, RoHS					0A			

