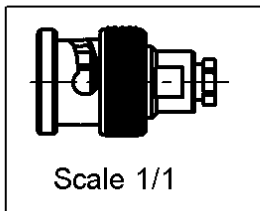
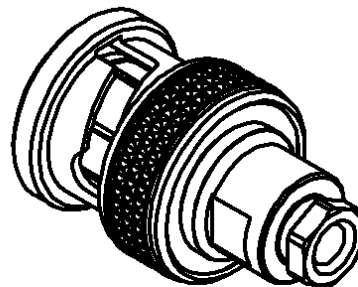
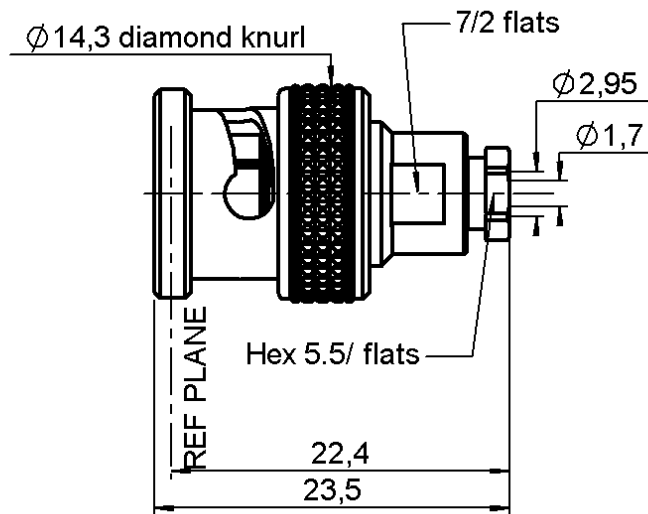


STRAIGHT PLUG CLAMP TYPE

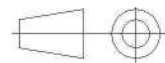
R142.004.000

CABLE 2.6/75 S

Series : **BNC 75**



All dimensions are in mm.



| COMPONENTS | MATERIALS | PLATING (µm) |
|----------------|-----------------|------------------------|
| BODY | BRASS | NICKEL 2 |
| CENTER CONTACT | BRASS | GOLD 0.5 OVER NICKEL 2 |
| OUTER CONTACT | - | - |
| INSULATOR | PTFE | - |
| GASKET | SILICONE RUBBER | - |
| OTHERS PARTS | BRASS | NICKEL 2 |
| - | - | - |
| - | - | - |

Issue : 1408 H

In the effort to improve our products, we reserve the right to make changes judged to be necessary.



STRAIGHT PLUG CLAMP TYPE

R142.004.000

CABLE 2.6/75 S

Series : **BNC 75**

PACKAGING

| Standard | Unit | Other |
|------------|-------------------|-------------------|
| 100 | 'W' option | Contact us |

SPECIFICATION

QAE 06-02 - -

ELECTRICAL CHARACTERISTICS

| | | | |
|---------------------------------|---------------|---------------|--------------------------|
| Impedance | | 75 | Ω |
| Frequency | | 0-1.5 | GHz |
| VSWR | 1.30 + | 0,0000 | x F(GHz) Maxi |
| Insertion loss | | 0.115 | \sqrt{F} (GHz) dB Maxi |
| RF leakage | - (| 57 | - F(GHz)) dB Maxi |
| Voltage rating | | 335 | Veff Maxi |
| Dielectric withstanding voltage | | 1000 | Veff mini |
| Insulation resistance | | 5000 | M Ω mini |

CABLE ASSEMBLY

| Stripping | a | b | c | d | e | f |
|-----------|------|------|------|------|------|------|
| mm | 3,50 | 1,00 | 8,00 | 2,00 | 4,50 | 0,00 |

Assembly instruction : **Clamp 01**

Recommended cable(s)
RG 179
RG 187

Characteristics indicated on this data sheet are those that can be achieved with the highest performance cable. Intrinsic limitations of the cable may diminish the performance of the assembly

Cable retention

- pull off **58** N mini
- torque **NA** N.cm

MECHANICAL CHARACTERISTICS

| | | | |
|----------------------------|--|-----------|-----------|
| Center contact retention | | | |
| Axial force – Mating end | | 27 | N mini |
| Axial force – Opposite end | | 27 | N mini |
| Torque | | NA | N.cm mini |

TOOLING

| Part Number | Description | Hexagon |
|-------------|-------------|---------|
| . | . | . |

| | | | |
|--------------------|--|---------------|------|
| Recommended torque | | | |
| Mating | | NA | N.cm |
| Panel nut | | NA | N.cm |
| Clamp nut | | 40 | N.cm |
| A/F clamp nut | | 5,5000 | mm |

| | | | |
|-------------|--|---------------|-------------|
| Mating life | | 500 | Cycles mini |
| Weight | | 0,0000 | g |

OTHER CHARACTERISTICS

-

ENVIRONMENTAL

| | | | |
|-----------------------|--|-----------------|--------------|
| Operating temperature | | -65/+165 | $^{\circ}$ C |
| Hermetic seal | | NA | Atm.cm3/s |
| Panel leakage | | NA | |

Issue : **1408 H**

In the effort to improve our products, we reserve the right to make changes judged to be necessary.

