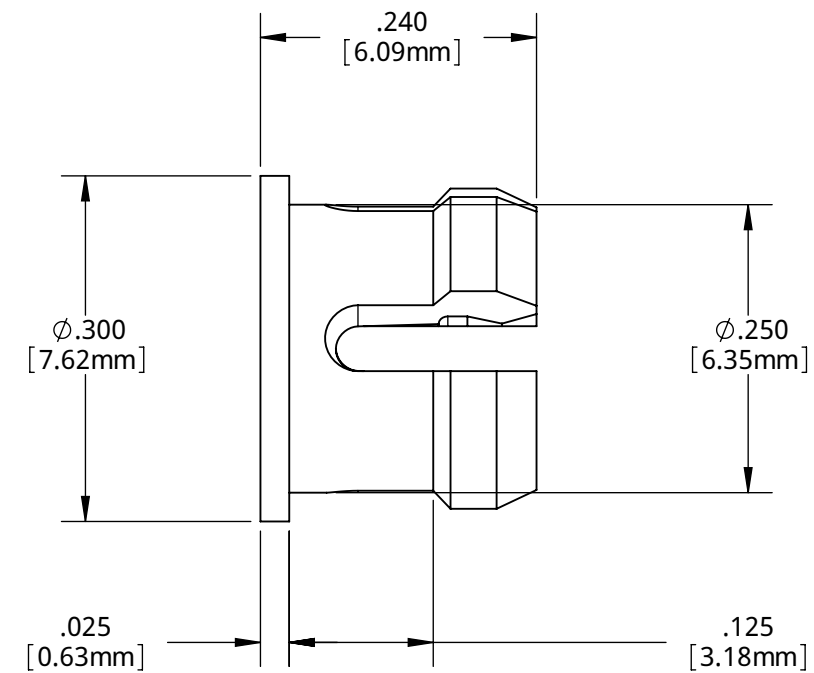
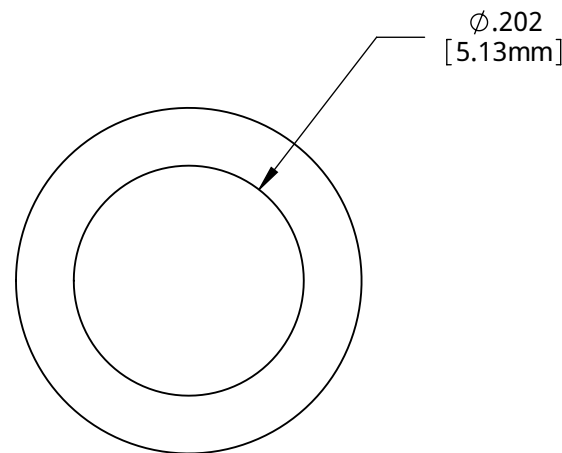
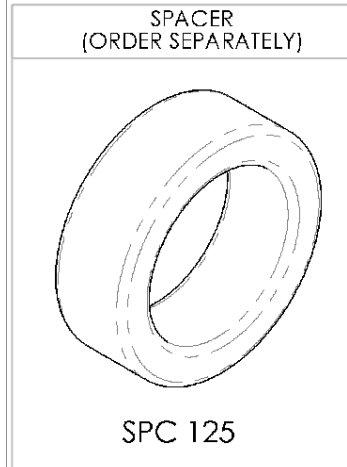
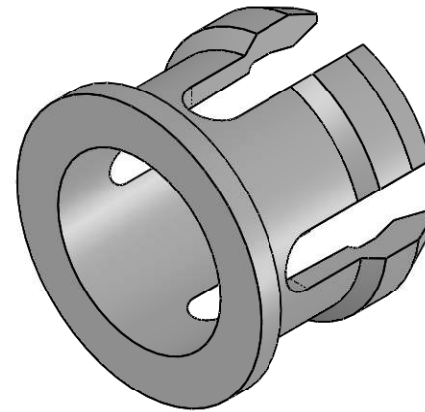


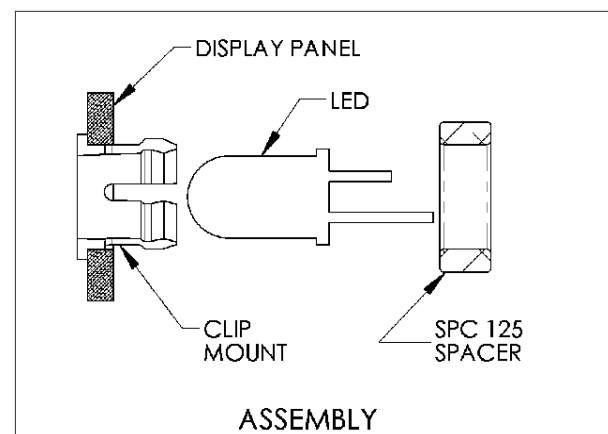
NOTES:

1. MOUNTING: Mounts in a $\phi .250 \pm .002$ [$\phi 6.35\text{mm} \pm .05$] panel hole on .375 [9.5mm] centers. Panel thickness .031 [.8 mm] to .125 [3.18mm]. Panel hole should be deburred, but not chamfered.
2. ASSEMBLY: Insert clip mount through panel hole, insert LED into clip mount, slide spacer over clip mount.
3. U.S. & Foreign Pat. Issued & Pend.

REVISIONS				
EC N#	REV.	DESCRIPTION	DATE	INITIALS
	1	ADD 45-DEG ANGLE, 4 PLCS	10-1-90	JS
	001	REVISED PER EC R111009AZ01	6-20-10	SMU



ORDERING CODE: CLP 125 BLK



UNLESS OTHERWISE SPECIFIED DIMENSIONS ARE IN INCHES:		MATERIAL POLYCARBONATE, UL 94-V2, BLACK		VISUAL COMMUNICATIONS COMPANY, INC. 190 Bosstick Boulevard, Suite 101 San Marcos, CA 92069 USA Phone (760) 560-1300 Fax (760) 560-1301 email vccsales@vcclite.com	
ANGLES $\pm 1^\circ$	DECIMALS .X $\pm .020$.XX $\pm .010$.XXX $\pm .005$	FINISH BREAK ALL CORNERS AND SHARP EDGES .030 MAX		TITLE: CLIPLITE® CLP 125 MOUNT	
THIRD ANGLE PROJECTION		APPROVAL		DATE	
DRAWN: SMU		6-20-10		SIZE DWG. NO. REV	
CHECKED: DZ		6-20-10		B CLP 125 BLK 001	
DO NOT SCALE DRAWING		SCALE: 1:1		SHEET 1 OF 1	