

ATLANTIC VERSION TERMINATOR INTERFACE ADAPTER	PART NUMBER	REVISION	DESCRIPTION	FEED TYPE	APPLICATOR STYLE CONVERSION CHART						
					CONVERT TO	PART NUMBERS REQUIRED					
	2150305-1	A	FINE CRIMP HEIGHT ADJUST	MECHANICAL	PNEUMATIC FEED	2119950-1	2119792-2	-	2119641-1	-	2063440-1
					SERVO LATCH PLATE	2119951-1	1901697-1	8-2150305-5	-	-	2168400-7 (QUANTITY 2)
					SMART APPLICATOR	2161326-1	-	8-2150305-4	-	-	-
	2150305-2	A	FINE CRIMP HEIGHT ADJUST	PNEUMATIC	MECHANICAL FEED	2119949-1	2063961-1	5-18022-5	2119653-1	-	-
					SERVO LATCH PLATE	2119951-1	1901697-1	8-2150305-5	-	-	2168400-7 (QUANTITY 2)
	2150305-5	A	FINE CRIMP HEIGHT ADJUST	SERVO LATCH PLATE ⁴	MECHANICAL FEED	2119949-1	2063961-1	5-18022-5	2119653-1	-	-
	2150305-6	A	NON-CRIMP HEIGHT ADJUST	SERVO LATCH PLATE ⁴	PNEUMATIC FEED	2119950-1	2119792-2	-	2119641-1	-	2063440-1
2150305-7	A	FINE CRIMP HEIGHT ADJUST	NONE	-	-	-	-	-	-	-	
7-2150305-7	A	CRIMP TOOLING KIT	-	-	-	-	-	-	-	-	

APPLICATOR DATA		
CRIMP SIZE	TYPE	
WIRE 2.54 mm [1.00]	F	
INSUL -	-	
APPLICATOR INSTRUCTIONS 408-10390		

TERMINAL DATA: TE TERMINAL TE CRIMP SPECIFICATION	
TERMINAL NAME: TERMINAL SPADE	
WIRE STRIP LENGTH 186-.201 IN [4.72-5.11 mm]	INSULATION DIAMETER RANGE Ø
TERMINAL APPLICATION SPECIFICATION 114-2084	
TERMINALS APPLIED	
TE TERMINAL	TE TERMINAL
40608	160036-2
41879	160061-2
160036-1	160167-1

WIRE SIZE	CRIMP HEIGHT mm [INCH]	CRIMP HEIGHT REFERENCE SETTING
16 AWG	1.70+/-0.05 [1.067+/-0.002]	6.3
18 AWG	1.55+/-0.05 [1.061+/-0.002]	8.0
20 AWG	1.47+/-0.05 [1.058+/-0.002]	8.8
22 AWG	1.40+/-0.05 [1.055+/-0.002]	9.6

- 1 RECOMMENDED SPARE PARTS
- 2 GREASE BEARING SURFACES LIGHTLY
- 3. LUBRICATE DAILY PER THE APPLICATOR INSTRUCTION SHEET SUPPLIED WITH THE APPLICATOR.
- 4 APPLICATOR SPECIFIC DATA TO BE ENTERED INTO BLANK MEMORY CHIP AT ASSEMBLY. SEE BELOW FOR PART NUMBER:
MECHANICAL FEED WITH "SMART APPLICATOR" CONVERSION: 8-2150305-4
PNEUMATIC FEED WITH "SMART APPLICATOR" CONVERSION: 8-2150305-4
SERVO FEED WITH "FINE CRIMP HEIGHT ADJUST": 8-2150305-5
SERVO FEED WITH "NON-CRIMP HEIGHT ADJUST": 8-2150305-6
- 5. ADJUSTMENT OF THE STRIPPER MAY BE REQUIRED WHEN MOVING THE APPLICATOR BETWEEN BENCH AND LEADMAKER APPLICATIONS.
- 6 APPLY PART NUMBER 1-23419-5 LOCTITE TO THREADS OF ITEMS 50, 62 FOR -6 ONLY APPLY PART NUMBER 1-23419-5 LOCTITE TO THREADS OF ITEMS 37, 50.
- 7 GREASE THREADS, GROOVE AND O-RING ON ITEMS 35 & 252.
- 8 MAGNET, ITEM 166 MUST BE ORIENTED CORRECTLY IN ORDER TO PROPERLY ACTUATE THE COUNTER.
- 9 CRIMP HEIGHT REFERENCE SETTING WAS THE SETTING USED WHEN THE APPLICATOR WAS QUALIFIED AT THE FACTORY. ADJUSTMENT MAY BE NECESSARY WHEN RUNNING APPLICATOR IN THE FIELD.
- 10 SPARE FEED CAM STORAGE LOCATION REFER TO INSTRUCTION SHEET FOR ADDITIONAL INFORMATION.
- 11 THE RECOMMENDED SET-UP FOR END FEED APPLICATORS IS POST-FEED WITH ITEM 2119653-1. THE APPLICATOR CAN BE CONFIGURED FOR PRE-FEED WITH ITEM 2119652-1 BUT MAY ENCOUNTER PROBLEMS WITH SOME APPLICATIONS. FEED ISSUES OR TERMINAL JAMMING MAY OCCUR IN THE PRE-FEED CONFIGURATION.
- 12 WHEN ASSEMBLING A NON CRIMP HEIGHT ADJUST APPLICATOR (-6) USE SHIMS FROM ITEM 260 TO ACHIEVE A NOMINAL SHIM HEIGHT OF (ENTER SHIM HEIGHT VALUE).

***WARNING**
ON INSTALLATION, SET WIRE DISC, ITEM 40 TO LARGEST WIRE SIZE SETTING. USE OF SETTINGS BELOW MINIMUM REQUIRED CRIMP HEIGHT SETTING WILL CAUSE DAMAGE TO CRIMP TOOLING.

-77	-7	-6	-5	-2	-1	PART NO	DESCRIPTION	ITEM NO
-	-	1	-	-	-	2119957-2	APPLICATOR SHIM PACK	260
-	1	-	1	1	1	8-21084-0	O-RING, .676 ID, .070 DIA. MAT.	252
-	-	-	-	1	-	2119640-1	PUSH ROD, AIR FEED	250
-	-	-	-	1	-	2079988-1	BUSHING, LCH5-12, MISUMI	249

ATLANTIC VERSION
Shown on sheets 1 of 4 & 2 of 4
(Pacific version shown on sheets 3 of 4 & 4 of 4)

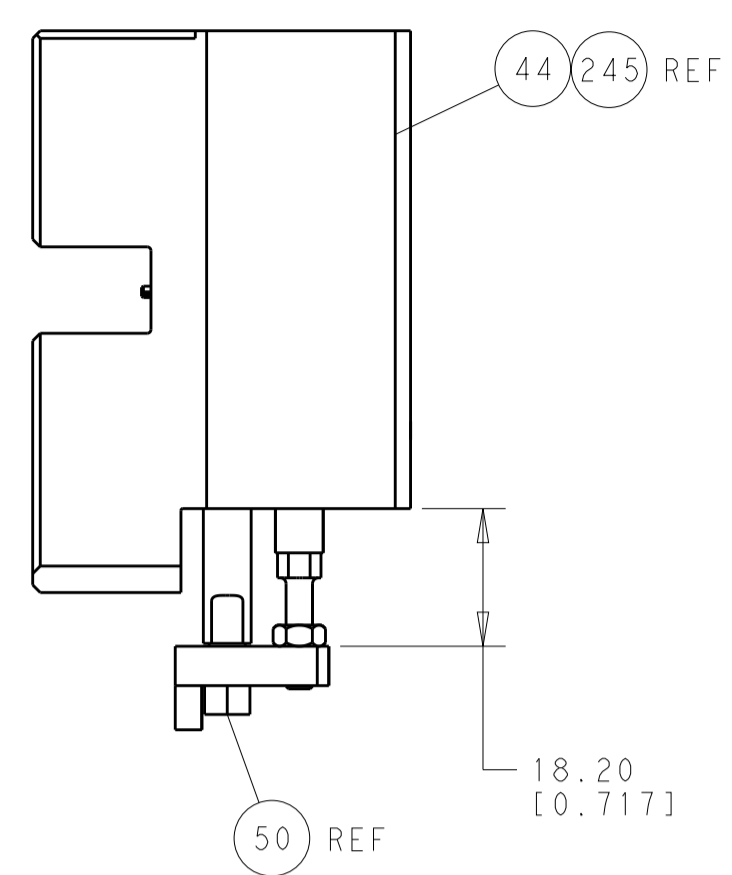
SET UP GAUGE 2119599-2	LOC A	DIST 66	REVISIONS			
P LTH		DESCRIPTION		DATE	OWN	APVD
A		RELEASED		26FEB2013	KH	GB

-	-	-	-	1	-	2119641-1	FEED CAM, AIR FEED	248
-	1	-	1	1	1	2119798-1	DETENT PIN	247
-	1	-	1	1	1	1-22279-3	SPRING, COMPRESSION	246
-	-	1	-	-	-	2119759-1	RAM, AMP STYLE, END FEED, NON-ADJUST	245
-	-	2	2	-	-	2168400-7	SHCS, LOW HEAD, RoHS, M5 X 10	240
-	-	-	-	-	1	2119580-1	MECHANICAL FEED ASSEMBLY	239
-	-	-	-	1	-	2063440-1	AIR FEED MODULE	238
-	-	1	1	-	-	2119740-2	TAG, IDENTIFICATION	213
-	-	REFREF	-	-	-	1901697-1	FEED FINGER ASSEMBLY, EF	183
-	1	1	1	1	1	6-993111-6	PIN, SLOTTED SPRING 3.0 X 14.0	177
-	1	1	1	1	1	8-22280-7	SPRING, COMPRESSION	176
-	1	1	1	1	1	1752353-2	GUIDE PIN, HOLDDOWN	175
-	1	1	1	1	1	1901680-2	GUIDE PIN, HOLDDOWN	174
-	-	-	-	2	-	21045-3	RING, RETAIN, EXTERN, 3/16 CRESCENT	172
-	1	1	1	1	1	994969-1	MAGNET, RARE EARTH HIGH ENERGY	166
-	REFREF	REFREF	REFREF	REFREF	REFREF	994970-2	COUNTER, MAGNETIC	164
-	-	-	-	1	-	240638-1	SPRING, FEED FINGER	163
-	-	-	-	1	-	3-23627-7	PIN, RETAIN, GRVD, 3/16 X .854	137
-	-	REFREF	-	-	-	SEE NOTE 4	MEMORY CHIP, PROGRAMMED	135
-	-	1	1	-	-	1633743-1	SERVO FEED LATCH ASM	133
-	1	1	1	1	1	455888-5	SPACER, CRIMPER	82
-	1	1	1	1	1	2119956-2	DOCUMENTATION PACKAGE	71
-	2	2	2	2	2	2-18032-2	SCR, SET, FLT POINT M3 X 10.0	70
-	1	-	-	1	1	2119740-1	TAG, IDENTIFICATION	67
-	2	2	2	2	2	2168078-1	SCREW, DRIVE, RH, RoHS	66
-	1	1	1	1	1	1901681-5	HOLDDOWN, TERMINAL	65
-	1	-	1	1	1	2119793-1	LIMITER, ADJUSTMENT BOLT	63
6	3	-	3	3	3	992763-5	SCR, SET, SOC, CONE POINT, M3 x 4.0	62
-	1	1	1	1	1	2079383-4	SCR, BHSC, RoHS (M4 X 8)	60
-	-	-	-	-	1	5-18022-5	SCR, HEX HD CAP, M4 X 6.0	59
-	-	-	-	-	1	2063961-1	FEED FINGER	58
-	4	4	4	4	4	2168400-4	SHCS, LOW HEAD, RoHS, M4 X 8	57
-	2	2	2	2	2	1-2168083-0	SCR, SKT HD CAP, RoHS, M4 X 10	56
-	2	2	2	2	2	5018030-2	NUT, HEX, REG, RoHS, M4	55
-	2	2	2	2	2	5018030-1	NUT, HEX, REG, RoHS, M3	54
-	2	2	2	2	2	986965-8	NUT, LOCK, HEX, TORQUE (M4)	53
-	1	1	1	1	1	1-5018030-0	NUT, HEX, REG, RoHS, M3.5	52
6	-	-	-	1	-	2119792-2	PAWL, EF, AIR	51
-	1	1	1	1	1	4-1752354-1	STANDOFF, HOLD-DOWN	50
-	-	-	-	-	1	18023-9	SCR, SKT HD CAP M4 X 6.0	49
-	-	-	-	-	1	2119652-1	FEED CAM, PRE FEED	48
-	-	-	-	-	1	2119653-1	FEED CAM, POST FEED	47
-	1	1	1	1	1	2119655-5	APPLICATOR BASIC ASSEMBLY, EF	46
-	1	-	1	1	1	2119369-1	RAM, AMP STYLE, END FEED	44
-	1	1	1	1	1	2079383-7	SCR, BHSC, RoHS (M8 X 25)	41
-	1	-	1	1	1	2119645-1	DISC, NUMBERED FA WIRE ADJUSTMENT	40
-	1	-	1	1	1	2119957-1	APPLICATOR SHIM PACK	39
-	1	1	1	1	1	2119644-2	RAM WASHER, PRECISION	38
6	1	1	1	1	1	2119085-1	FA HEAD, ATLANTIC STYLE	37
-	1	-	1	1	1	2119092-1	BOLT, ADJUSTMENT	35
-	8	8	8	8	8	1-18028-2	WASHER, FLAT, REG M4	33
-	2	2	2	2	2	2168083-9	SCR, SKT HD CAP, RoHS, M4 X 20	31
-	2	2	2	2	2	1-2168083-0	SCR, SKT HD CAP, RoHS, M4 X 10	29
-	1	1	1	1	1	240639-1	STRIPPER (MACHINING)	27
-	2	2	2	2	2	1320906-1	STUD, THREADED	25
-	1	1	1	1	1	1752371-1	PLATE, STRIP GUIDE	24
-	2	2	2	2	2	2-22281-3	SPRING, COMPRESSION	22
-	1	1	1	1	1	1752373-4	DRAG	20
-	1	1	1	1	1	1901696-7	STRIP GUIDE, REAR	19
-	1	1	1	1	1	1901695-7	STRIP GUIDE, FRONT	18
-	4	4	4	4	4	1-2079383-1	SCR, BHSC, RoHS (M6 X 12)	17
1	1	1	1	1	1	1752360-1	SPACER, HOLD-DOWN	13
-	1	1	1	1	1	240644-1	PLATE, REAR SHEAR	11
1	2	2	2	2	2	1-240645-1	SPACER, SHEAR PLATE	10
1	1	1	1	1	1	240642-1	PLATE, FRONT SHEAR	9
1	1	1	1	1	1	1803002-2	ANVIL, COMBINATION, END FEED	8
1	1	1	1	1	1	8-240651-7	BLADE, SLUG	7
-	-	-	-	-	-	-	-	6
-	1	1	1	1	1	4-240641-1	SPACER	5
-	-	-	-	-	-	-	-	4
-	-	-	-	-	-	-	-	3
-	-	-	-	-	-	-	-	2
1	1	1	1	1	1	456407-7	CRIMPER, WIRE PREMIUM	1

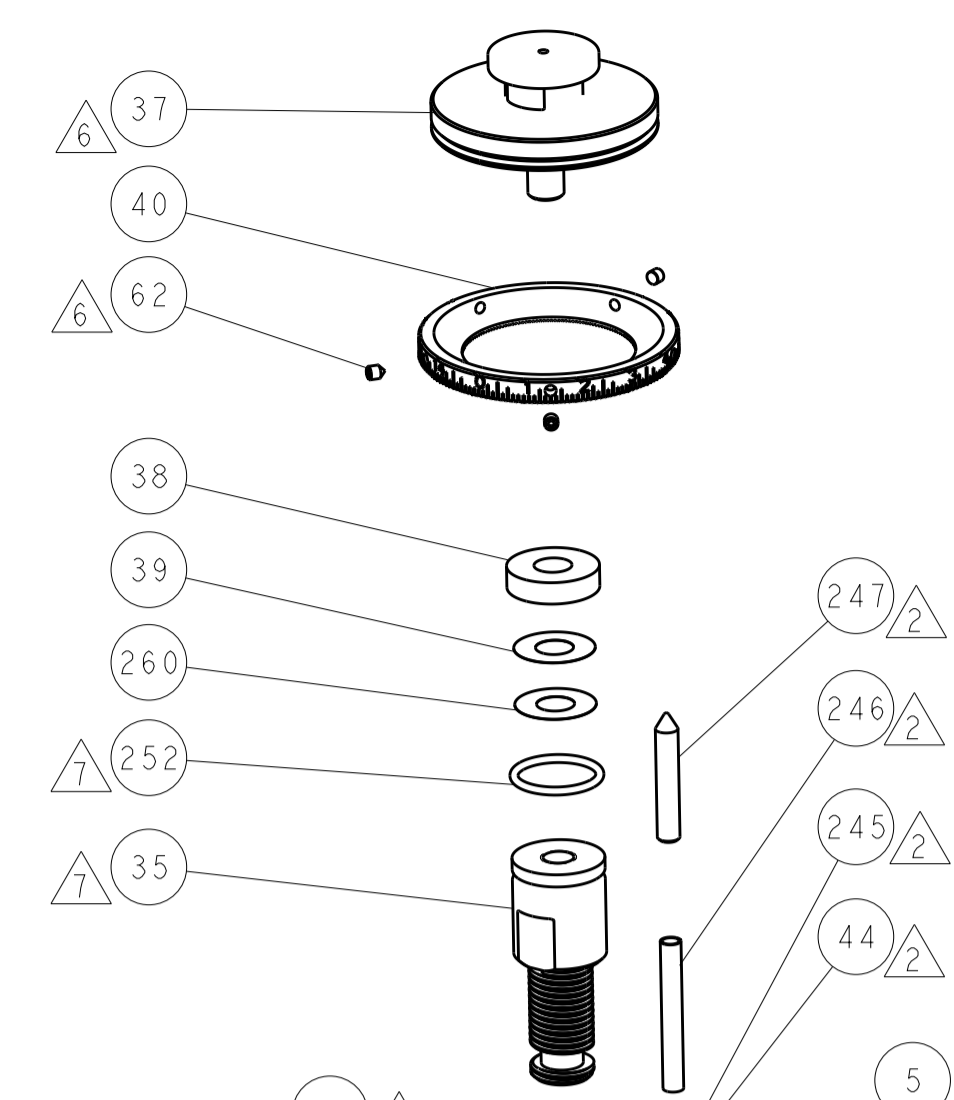
DIMENSIONS:		TOLERANCES UNLESS OTHERWISE SPECIFIED:	
mm		0 PLC ±0.5	1 PLC ±0.13
		5 PLC ±0.013	4 PLC ±0.001
MATERIAL:		FINISH:	
-		-	

OWN H. HUANG	06DEC2012		TE Connectivity
CHK S. XI	06DEC2012		Harrisburg, PA 17105-3608
APVD S. XI	06DEC2012	Ocean End Feed Applicator	
PRODUCT SPEC		-	
APPLICATION SPEC		-	
SIZE	CAGE CODE	DRAWING NO	RESTRICTED TO
A1	00779	2150305	-
Customer Accessible Production Drawing		SCALE	SHEET 1 of 4
		1:1	REV A

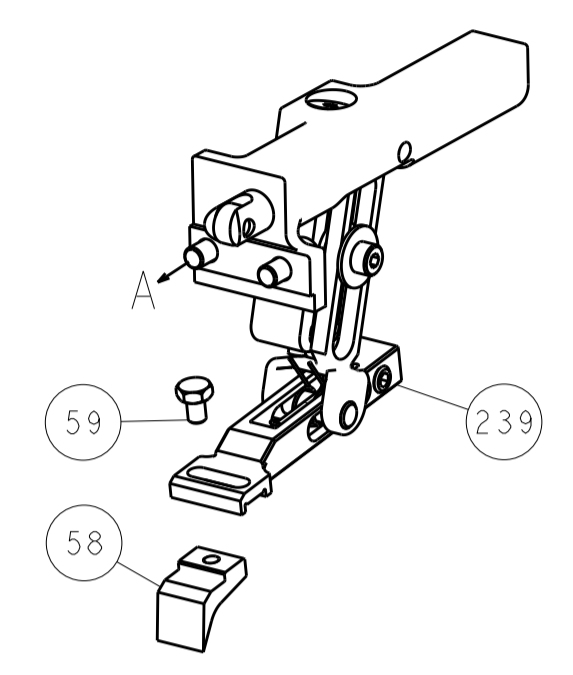
LOC		DIST		REVISIONS			
A	66	P	LTM	DESCRIPTION	DATE	OWN	APVD
		-		SEE SHEET 1			



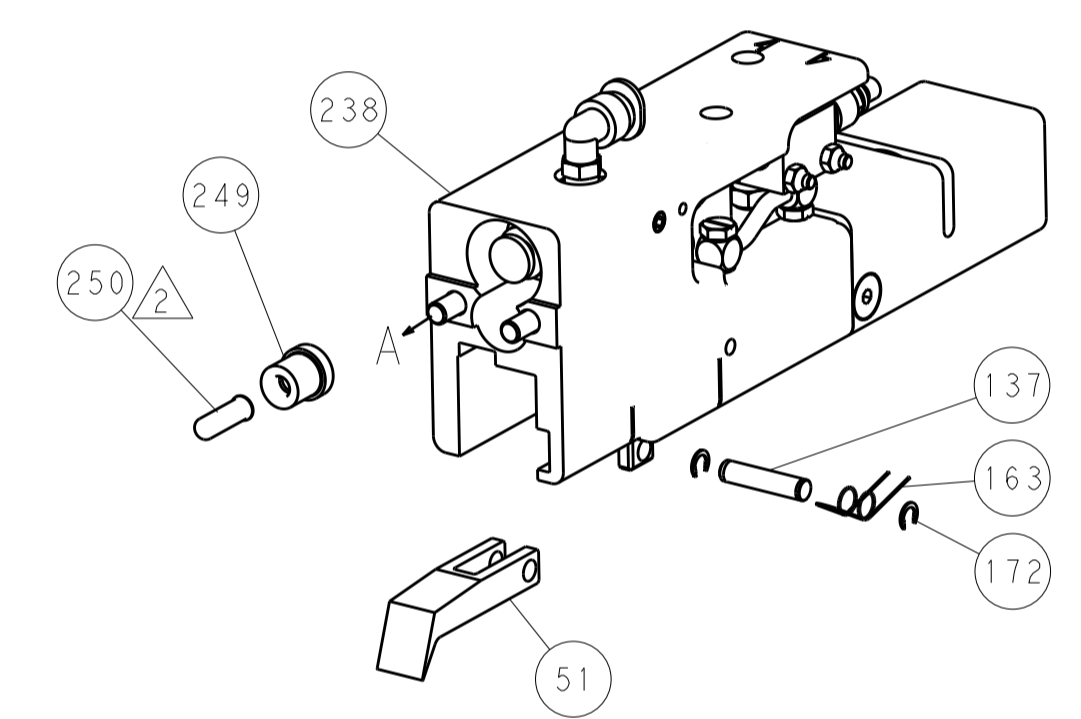
HOLDDOWN SET-UP



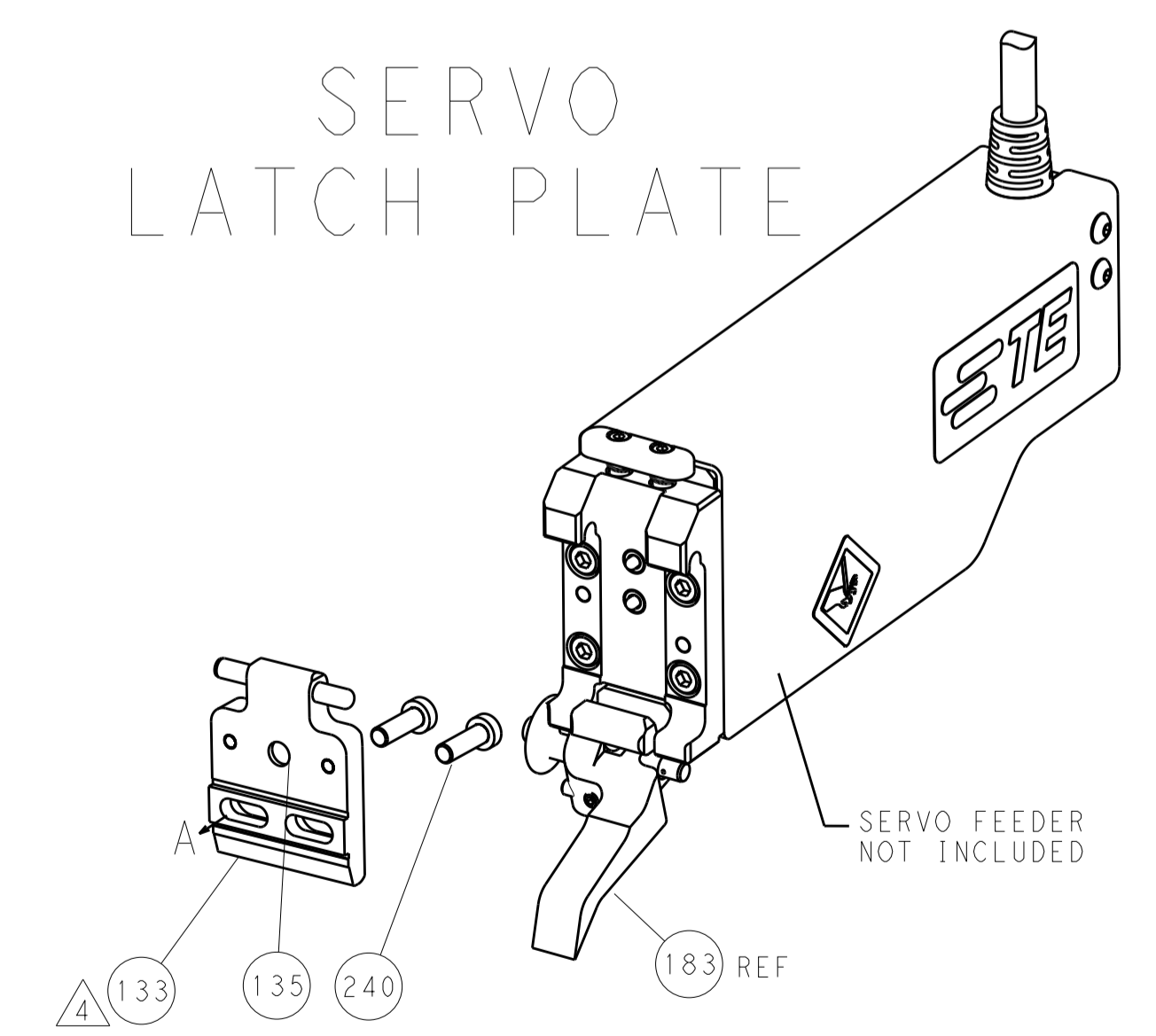
FEED TYPE
MECHANICAL



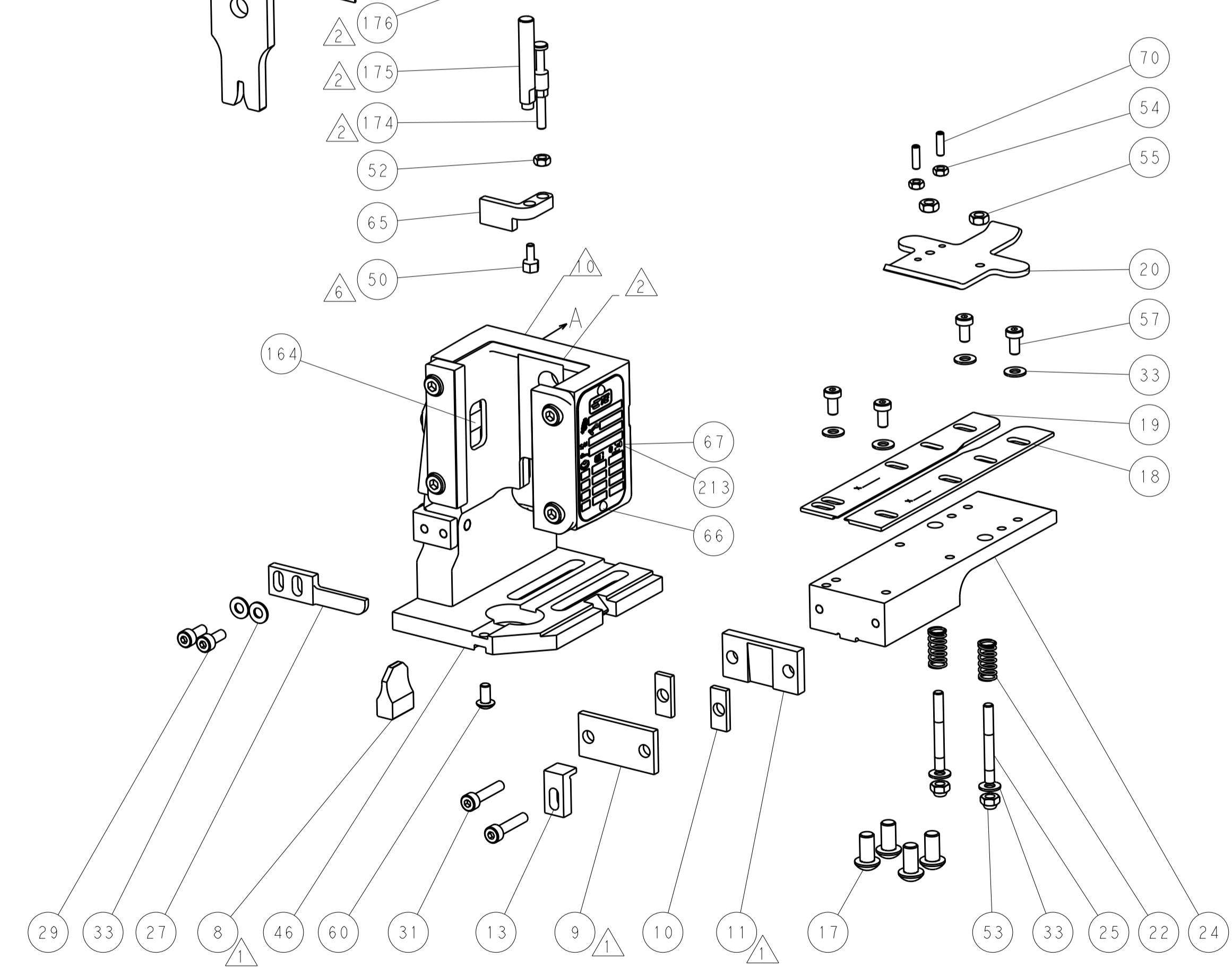
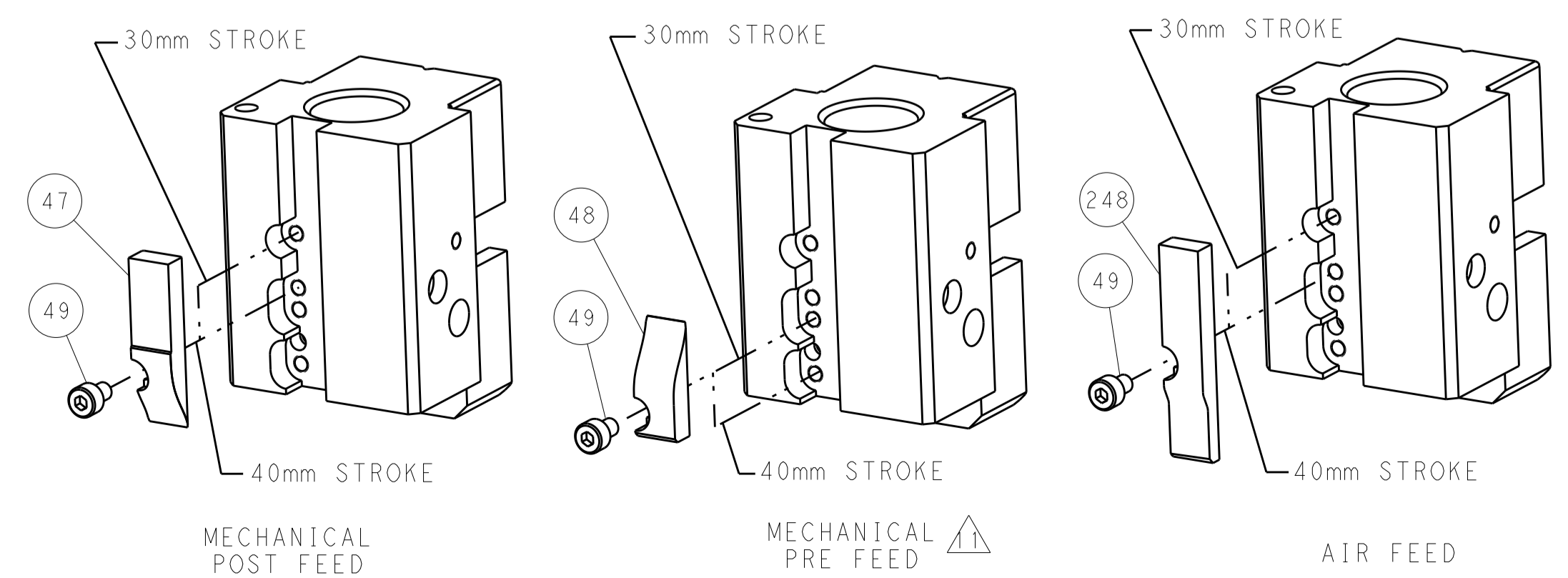
PNEUMATIC



SERVO
LATCH PLATE



CAM POSITIONS



ATLANTIC VERSION
 Shown on sheets 1 of 4 & 2 of 4
 (Pacific version shown on sheets 3 of 4 & 4 of 4)

DIMENSIONS:		TOLERANCES UNLESS OTHERWISE SPECIFIED:		OWN: K. HUANG 06DEC2012		TE Connectivity	
mm	0 PLC ±0.5	1 PLC ±0.5	2 PLC ±0.13	3 PLC ±0.013	4 PLC ±0.0013	APVD: S. XI 06DEC2012	Harrisburg, PA 17105-3608
MATERIAL:		FINISH:		PRODUCT SPEC:		NAME: Ocean End Feed Applicator	
				APPLICATION SPEC:		SIZE: A11 00779 ©=2150305	
				WEIGHT:		RESTRICTED TO:	
				Customer Accessible Production Drawing		SCALE: 1:1 SHEET 2 OF 4 REV A	

PACIFIC VERSION TERMINATOR INTERFACE ADAPTER	PART NUMBER	REVISION	DESCRIPTION	FEED TYPE	APPLICATOR STYLE CONVERSION CHART						
					CONVERT TO	PART NUMBERS REQUIRED					
	2-2150305-1	A	FINE CRIMP HEIGHT ADJUST	MECHANICAL	PNEUMATIC FEED	2119950-1	2119792-2	-	2119641-2	-	2063440-1
					SERVO LATCH PLATE	2119951-1	1901697-1	8-2150305-5	-	-	2168400-7 (QUANTITY 2)
					SMART APPLICATOR	2161326-1	-	8-2150305-4	-	-	-
	2-2150305-2	A	FINE CRIMP HEIGHT ADJUST	PNEUMATIC	MECHANICAL FEED	2119949-1	2063961-1	5-18022-5	2119653-2	-	-
					SERVO LATCH PLATE	2119951-1	1901697-1	8-2150305-5	-	-	2168400-7 (QUANTITY 2)
					SMART APPLICATOR	2161326-1	-	8-2150305-4	-	-	-
	2-2150305-5	A	FINE CRIMP HEIGHT ADJUST	SERVO LATCH PLATE ⁴	MECHANICAL FEED	2119949-1	2063961-1	5-18022-5	2119653-2	-	-
					PNEUMATIC FEED	2119950-1	2119792-2	-	2119641-2	-	2063440-1
	2-2150305-7	A	FINE CRIMP HEIGHT ADJUST	NONE	-	-	-	-	-	-	-
	7-2150305-7	A	CRIMP TOOLING KIT	-	-	-	-	-	-	-	-

APPLICATOR DATA		
CRIMP SIZE	TYPE	
WIRE 2.54 mm (.100)	F	
INSUL -	-	
APPLICATOR INSTRUCTIONS 408-10390		

TERMINAL DATA: TE TERMINAL		TE CRIMP SPECIFICATION
TERMINAL NAME: TERMINAL, SPADE		
WIRE STRIP LENGTH .186-.201 IN [4.72-5.11 mm]		INSULATION DIAMETER RANGE Ø -
TERMINAL APPLICATION SPECIFICATION	114-2084	-
TERMINALS APPLIED		
TE TERMINAL	TE TERMINAL	TE TERMINAL
40608	160036-2	160167-2
41879	160061-2	160167-3
160036-1	160167-1	160332-1

WIRE SIZE	CRIMP HEIGHT mm [INCH]	CRIMP HEIGHT REFERENCE SETTING ⁹
16 AWG	1.70 +/- 0.05 [.067 +/- .002]	6.3
18 AWG	1.55 +/- 0.05 [.061 +/- .002]	8.0
20 AWG	1.47 +/- 0.05 [.058 +/- .002]	8.8
22 AWG	1.40 +/- 0.05 [.055 +/- .002]	9.6

- RECOMMENDED SPARE PARTS
- GREASE BEARING SURFACES LIGHTLY
- 3. LUBRICATE DAILY PER THE APPLICATOR INSTRUCTION SHEET SUPPLIED WITH THE APPLICATOR.
- APPLICATOR SPECIFIC DATA TO BE ENTERED INTO BLANK MEMORY CHIP AT ASSEMBLY. SEE BELOW FOR PART NUMBER:
 MECHANICAL FEED WITH "SMART APPLICATOR" CONVERSION: 8-2150305-4
 PNEUMATIC FEED WITH "SMART APPLICATOR" CONVERSION: 8-2150305-4
 SERVO FEED WITH "FINE CRIMP HEIGHT ADJUST": 8-2150305-5
- 5. ADJUSTMENT OF THE STRIPPER MAY BE REQUIRED WHEN MOVING THE APPLICATOR BETWEEN BENCH AND LEADMAKER APPLICATIONS.
- APPLY PART NUMBER 1-23419-5 LOCTITE TO THREADS OF ITEMS 50, 62.
- GREASE THREADS, GROOVE AND O-RING ON ITEMS 139 & 153.
- MAGNET, ITEM 166 MUST BE ORIENTED CORRECTLY IN ORDER TO PROPERLY ACTUATE THE COUNTER.
- CRIMP HEIGHT REFERENCE SETTING WAS THE SETTING USED WHEN THE APPLICATOR WAS QUALIFIED AT THE FACTORY. ADJUSTMENT MAY BE NECESSARY WHEN RUNNING APPLICATOR IN THE FIELD.
- SPARE FEED CAM STORAGE LOCATION REFER TO INSTRUCTION SHEET FOR ADDITIONAL INFORMATION.
- THE RECOMMENDED SET-UP FOR END FEED APPLICATORS IS POST-FEED WITH ITEM 2119653-1. THE APPLICATOR CAN BE CONFIGURED FOR PRE-FEED WITH ITEM 2119652-1 BUT MAY ENCOUNTER PROBLEMS WITH SOME APPLICATIONS. FEED ISSUES OR TERMINAL JAMMING MAY OCCUR IN THE PRE-FEED CONFIGURATION.

***WARNING**
 ON INSTALLATION, SET WIRE DISC, ITEM 40 TO LARGEST WIRE SIZE SETTING. USE OF SETTINGS BELOW MINIMUM REQUIRED CRIMP HEIGHT SETTING WILL CAUSE DAMAGE TO CRIMP TOOLING.

	ITEM NO	
- 1 1 1 1 1	2119782-1 FINE ADJUST HEAD ASM, PACIFIC STYLE	251
- - - 1 -	2119640-1 PUSH ROD, AIR FEED	250
-77-27-25-22-21	PART NO DESCRIPTION	ITEM NO

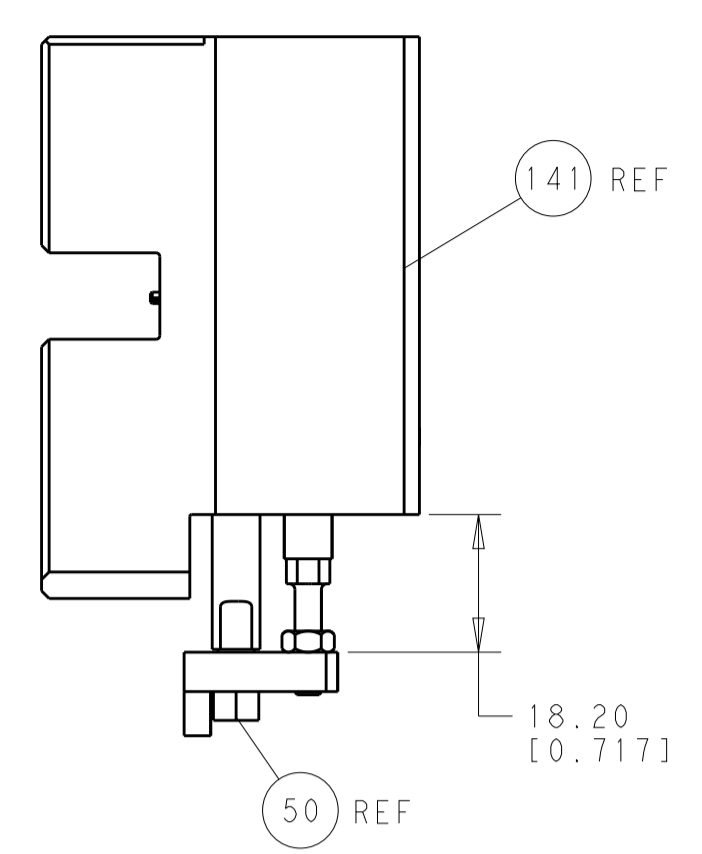
PACIFIC VERSION
 Shown on sheets 3 of 4 & 4 of 4
 (Atlantic version shown on sheets 1 of 4 & 2 of 4)

SET UP GAUGE	LOC	DIST	REVISIONS			
2119599-2	A	66	REV	DATE	BY	APPV
-	-	-	1	SEE SHEET 1	-	-

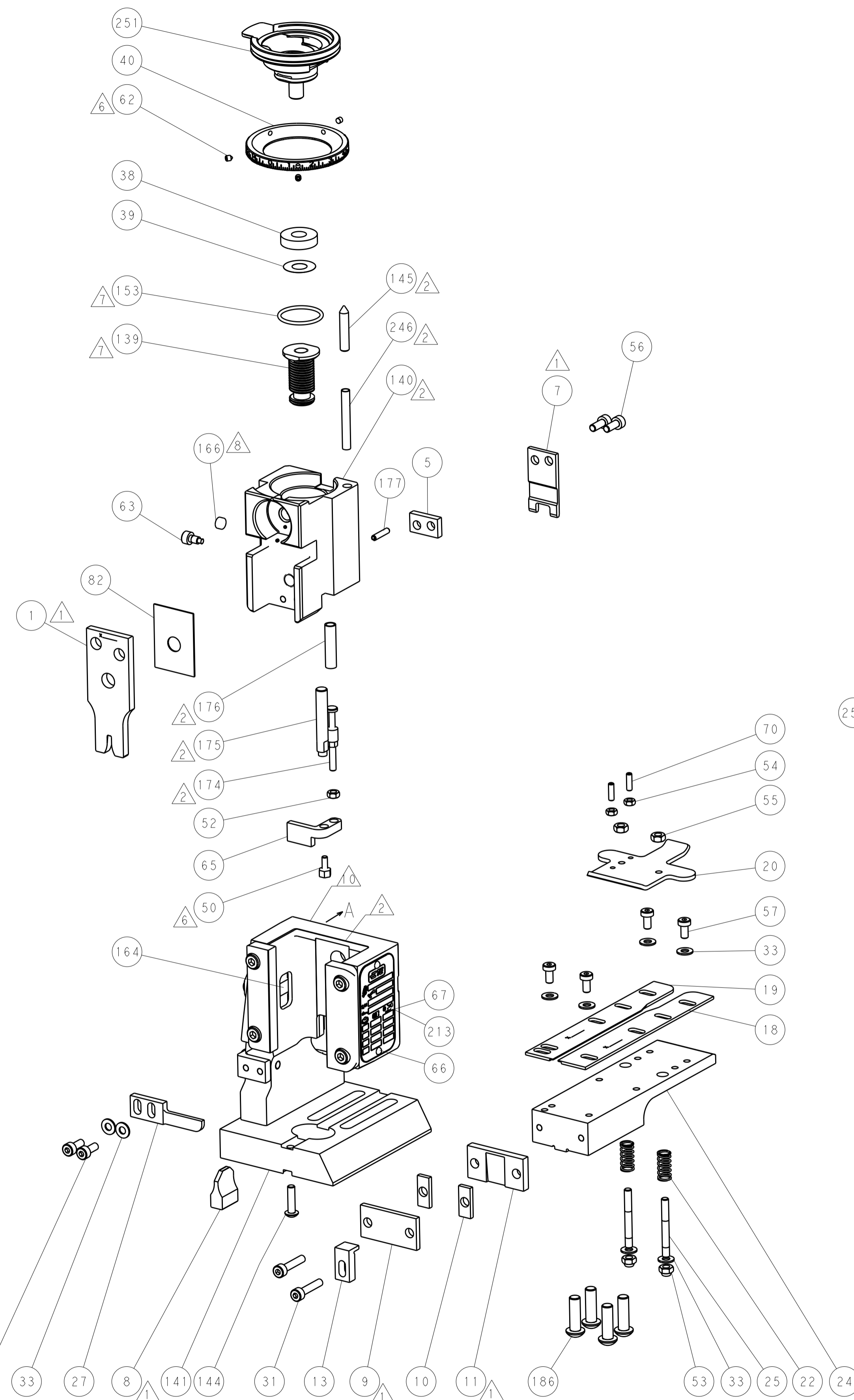
REV	DATE	BY	APPV	DESCRIPTION	ITEM NO
-	-	-	1	2079988-1 BUSHING, LCH5-12, MISUMI	249
-	1	1	1	1-22279-3 SPRING, COMPRESSION	246
-	-	2	-	2168400-7 SHCS, LOW HEAD, RoHS, M5 X 10	240
-	-	-	1	2119580-1 MECHANICAL FEED ASSEMBLY	239
-	-	-	1	2063440-1 AIR FEED MODULE	238
-	-	1	-	2119740-2 TAG, IDENTIFICATION	213
-	4	4	4	2079383-9 SCR, BHSC, RoHS (M6 X 20)	186
-	-	REF	-	1901697-1 FEED FINGER ASSEMBLY, EF	183
-	1	1	1	6-993111-6 PIN, SLOTTED SPRING 3.0 X 14.0	177
-	1	1	1	8-22280-7 SPRING, COMPRESSION	176
-	1	1	1	1752353-2 GUIDE PIN, HOLDDOWN	175
-	1	1	1	1901680-2 GUIDE PIN, HOLDDOWN	174
-	-	-	2	21045-3 RING, RETAIN, EXTERN, 3/16 CRESCENT	172
-	1	1	1	994969-1 MAGNET, RARE EARTH HIGH ENERGY	166
-	REF	REF	REF	994970-2 COUNTER, MAGNETIC	164
-	-	-	1	240638-1 SPRING, FEED FINGER	163
-	1	1	1	8-21084-1 O-RING, .801 ID, .070 DIA. MAT.	153
-	-	-	1	2119641-2 FEED CAM, AIR FEED	152
-	1	1	1	2119798-2 DETENT PIN	145
-	1	1	1	2079383-8 SCR, BHSC, RoHS (M4 X 16)	144
-	-	-	1	2119653-2 FEED CAM, POST FEED	142
-	1	1	1	2119655-6 APPLICATOR BASIC ASSEMBLY, EF	141
-	1	1	1	2119651-1 RAM, ASIAN STYLE, END FEED	140
-	1	1	1	2119092-2 BOLT, ADJUSTMENT	139
-	-	-	1	3-23627-7 PIN, RETAIN, GRVD, 3/16 X .854	137
-	-	REF	-	SEE NOTE 4 MEMORY CHIP, PROGRAMMED	135
-	-	1	-	1633743-1 SERVO FEED LATCH ASM	133
-	1	1	1	455888-5 SPACER, CRIMPER	82
-	1	1	1	2119956-2 DOCUMENTATION PACKAGE	71
-	2	2	2	2-18032-2 SCR, SET, FLT POINT M3 X 10.0	70
-	1	-	1	2119740-1 TAG, IDENTIFICATION	67
-	2	2	2	2168078-1 SCREW, DRIVE, RH, RoHS	66
-	1	1	1	1901681-5 HOLDDOWN, TERMINAL	65
-	1	1	1	2119793-1 LIMITER, ADJUSTMENT BOLT	63
-	3	3	3	992763-5 SCR, SET, SOC, CONE POINT, M3 x 4.0	62
-	-	-	1	5-18022-5 SCR, HEX HD CAP, M4 X 6.0	59
-	-	-	1	2063961-1 FEED FINGER	58
-	4	4	4	2168400-4 SHCS, LOW HEAD, RoHS, M4 X 8	57
-	2	2	2	1-2168083-0 SCR, SKT HD CAP, RoHS, M4 X 10	56
-	2	2	2	5018030-2 NUT, HEX, REG, RoHS, M4	55
-	2	2	2	5018030-1 NUT, HEX, REG, RoHS, M3	54
-	2	2	2	986965-8 NUT, LOCK, HEX, TORQUE (M4)	53
-	1	1	1	1-5018030-0 NUT, HEX, REG, RoHS, M3.5	52
-	-	-	1	2119792-2 PAWL, EF, AIR	51
-	1	1	1	4-1752354-1 STANDOFF, HOLD-DOWN	50
-	-	-	1	18023-9 SCR, SKT HD CAP M4 X 6.0	49
-	-	-	1	2119652-1 FEED CAM, PRE FEED	48
-	1	1	1	2079383-7 SCR, BHSC, RoHS (M8 X 25)	41
-	1	1	1	2119645-1 DISC, NUMBERED FA WIRE ADJUSTMENT	40
-	1	1	1	2119957-1 APPLICATOR SHIM PACK	39
-	1	1	1	2119644-2 RAM WASHER, PRECISION	38
-	8	8	8	1-18028-2 WASHER, FLAT, REG M4	33
-	2	2	2	2168083-9 SCR, SKT HD CAP, RoHS, M4 X 20	31
-	2	2	2	1-2168083-0 SCR, SKT HD CAP, RoHS, M4 X 10	29
-	1	1	1	240639-1 STRIPPER (MACHINING)	27
-	2	2	2	1320906-1 STUD, THREADED	25
-	1	1	1	1752371-1 PLATE, STRIP GUIDE	24
-	2	2	2	2-22281-3 SPRING, COMPRESSION	22
-	1	1	1	1752373-4 DRAG	20
-	1	1	1	1901696-7 STRIP GUIDE, REAR	19
-	1	1	1	1901695-7 STRIP GUIDE, FRONT	18
-	1	1	1	1752360-1 SPACER, HOLD-DOWN	13
-	1	1	1	240644-1 PLATE, REAR SHEAR	11
-	2	2	2	1-240645-1 SPACER, SHEAR PLATE	10
-	1	1	1	240642-1 PLATE, FRONT SHEAR	9
-	1	1	1	1803002-2 ANVIL, COMBINATION, END FEED	8
-	1	1	1	8-240651-7 BLADE, SLUG	7
-	-	-	-	-	6
-	1	1	1	4-240641-1 SPACER	5
-	-	-	-	-	4
-	-	-	-	-	3
-	-	-	-	-	2
-	1	1	1	456407-7 CRIMPER, WIRE PREMIUM	1

DIMENSIONS: mm 	TOLERANCES UNLESS OTHERWISE SPECIFIED: 0 PLC ±.05 1 PLC ±.03 2 PLC ±.013 3 PLC ±.013 4 PLC ±.0001 ANGLES ±.0001	DWG: H. HUANG 06DEC2012 CHK: S. XI 06DEC2012 S. XI 06DEC2012 APV: S. XI 06DEC2012	TE Connectivity Harrisburg, PA 17105-3608 NAME: Ocean End Feed Applicator SIZE: A1 CASE CODE: 00779 DRAWING NO: C=2150305 RESTRICTED TO: - Customer Accessible Production Drawing SCALE: 1:1 SHEET 3 OF 4 REV A
-----------------------	---	--	---

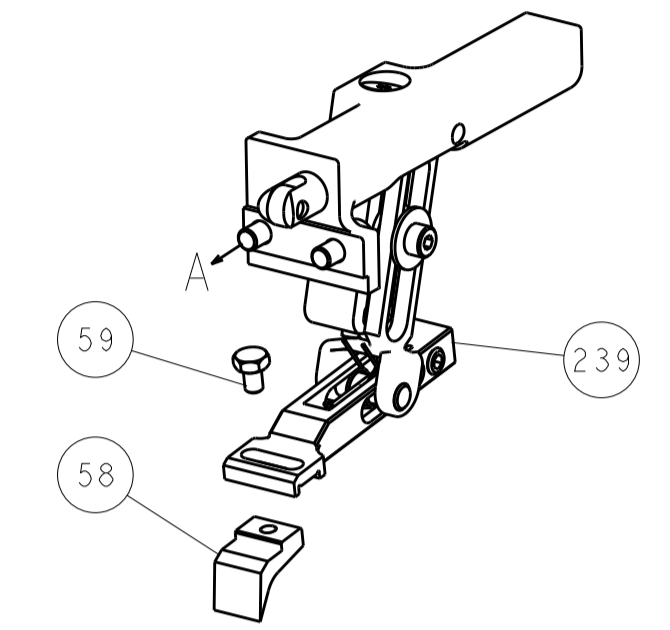
REVISEMENTS		DATE	OWN	APVD
A	66	SEE SHEET 1	-	-



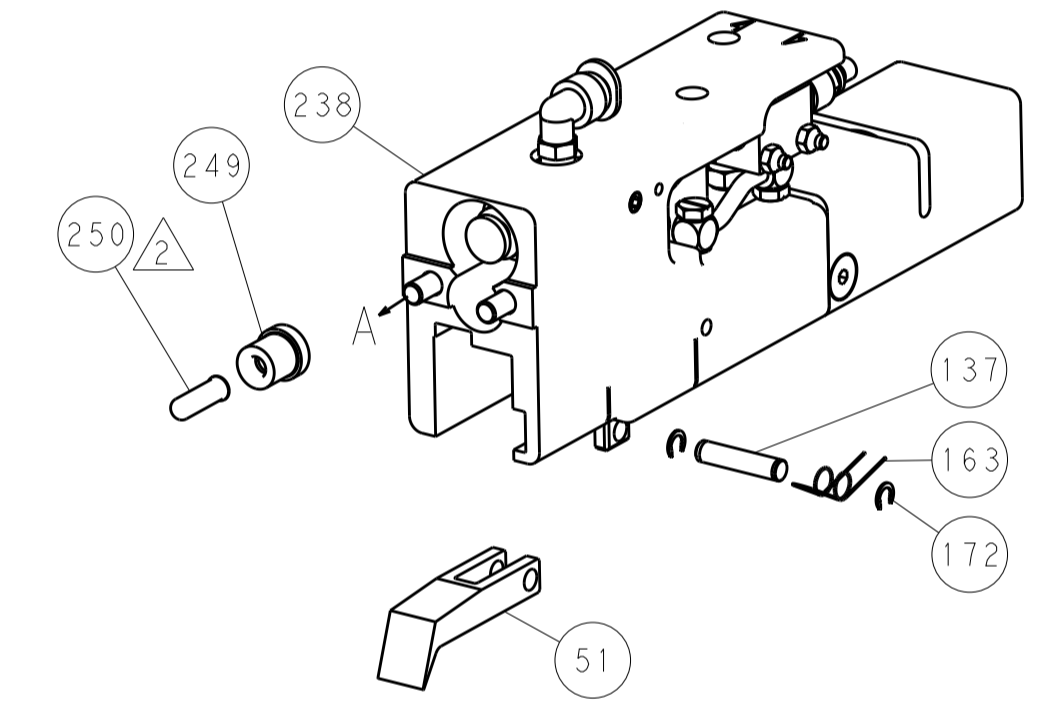
HOLDDOWN SET-UP



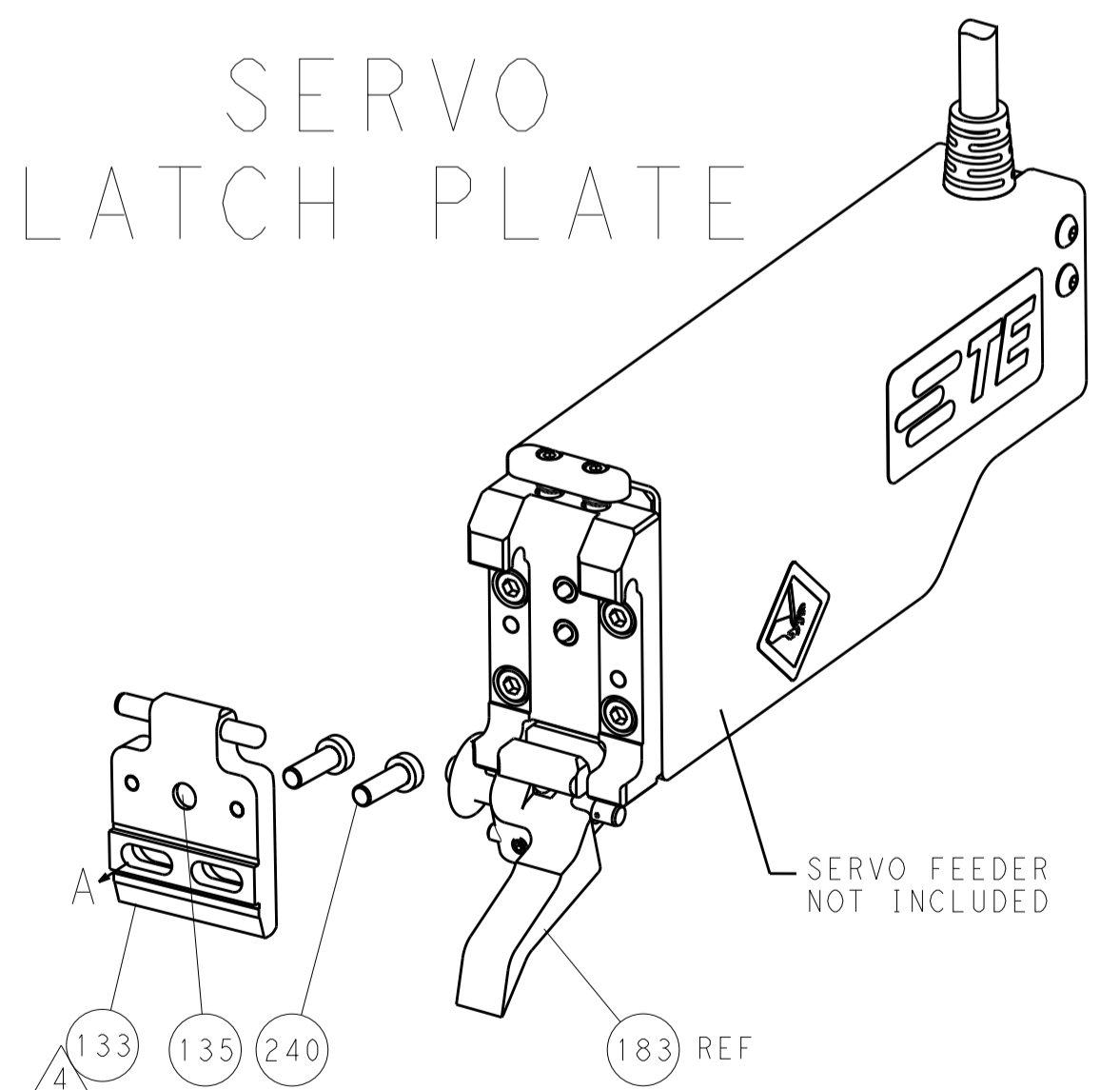
FEED TYPE
MECHANICAL



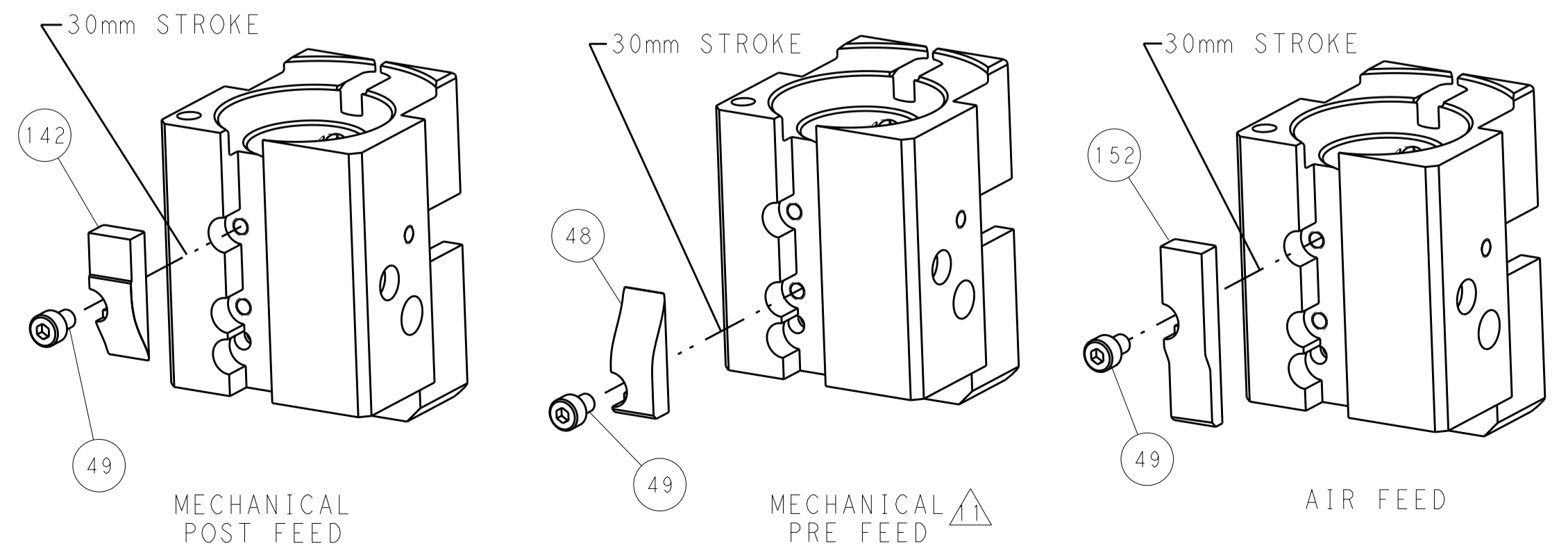
PNEUMATIC



SERVO
LATCH PLATE



CAM POSITIONS



PACIFIC VERSION
 Shown on sheets 3 of 4 & 4 of 4
 (Atlantic version shown on sheets 1 of 4 & 2 of 4)

DIMENSIONS:		TOLERANCES UNLESS OTHERWISE SPECIFIED:		DWN: H. HUANG 06DEC2012		TE Connectivity Harrisburg, PA 17105-3608
mm	0 PLC ±0.5	1 PLC ±0.5	2 PLC ±0.13	3 PLC ±0.013	4 PLC ±0.0013	
MATERIAL:	FINISH:	WEIGHT:	SCALE:	SIZE: A1	CAGE CODE: 00779	DRAWING NO: C=2150305
Customer Accessible Production Drawing				SHEET 4 OF 4	REV A	RESTRICTED TO