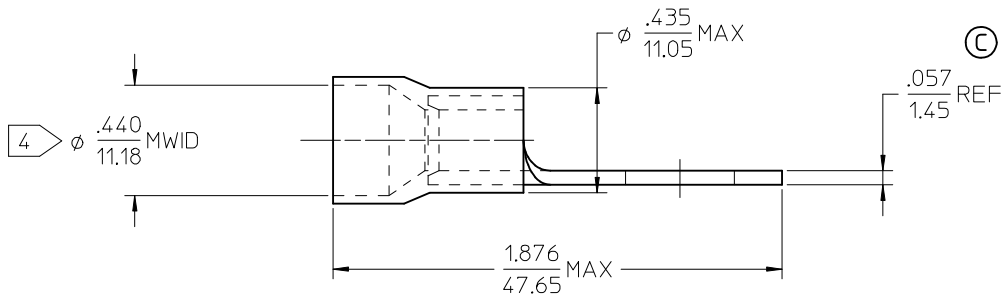
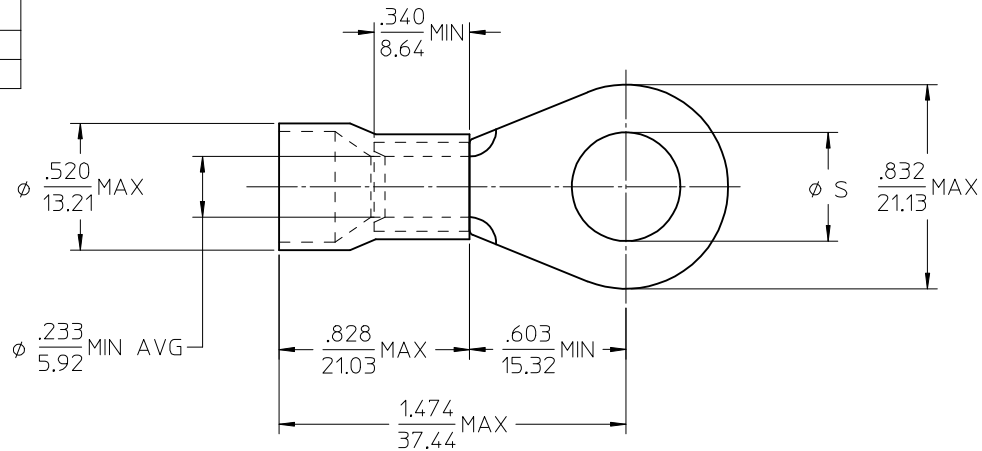


MATERIAL NO.	ENG. NO.	STUD SIZE	φS ±.005
190710200	E-658-10X	10	.198
190710203	E-658-14X	1/4	.265
190710206	E-658-56X	5/16	.328
190710204	E-658-38X	3/8	.390
190710208	E-658-76X	7/16	.453
190710201	E-658-12X	1/2	.515
190710207	E-658-58X	5/8	.656



NOTE(S):

1. TERMINAL MATERIAL: COPPER ALLOY.
2. TERMINAL FINISH: ELECTRO TIN PLATE.
3. INSULATION MATERIAL: PVC, COLOR CODED BLUE.
4. MWID = MAXIMUM WIRE INSULATION DIAMETER.
5. ALL COMPONENTS ARE ROHS COMPLIANT.

INCREASED MATL THKNS EC NO: ETC2007-0158 DRW: E. HILE 2006/10/20 CHKD: J. MACNEIL 2006/10/20 APPR: J. MACNEIL 2006/10/20	QUALITY SYMBOLS	GENERAL TOLERANCES (UNLESS SPECIFIED)	DIMENSION STYLE	SCALE	DESIGN UNITS	THIRD ANGLE PROJECTION
	▽=0	mm INCH	IN/MM	4:1	INCH	
	▽=0	4 PLACES ±--- ±---	DRAWN BY DATE	TITLE		
		3 PLACES ±--- ±---	E. HILE 2005/11/23	RING TONGUE TERMINAL INSULKRIMP		
	2 PLACES ±--- ±---	2005/11/23	CHECKED BY DATE	658 SERIES 6 AWG		
	1 PLACE ±--- ±---	R. DEROSS 2005/11/23	APPROVED BY DATE	MOLEX INCORPORATED		
	ANGULAR ±---°	R. DEROSS 2005/11/23	MATERIAL NO.	DOCUMENT NO.	SHEET NO.	
			SEE CHART	SD-19071-011	1 OF 1	
			THIS DRAWING CONTAINS INFORMATION THAT IS PROPRIETARY TO MOLEX INCORPORATED AND SHOULD NOT BE USED WITHOUT WRITTEN PERMISSION			