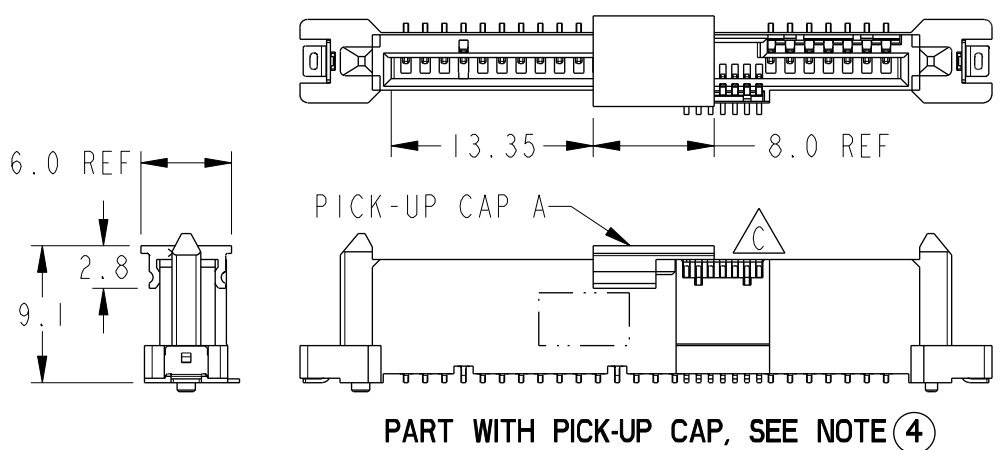
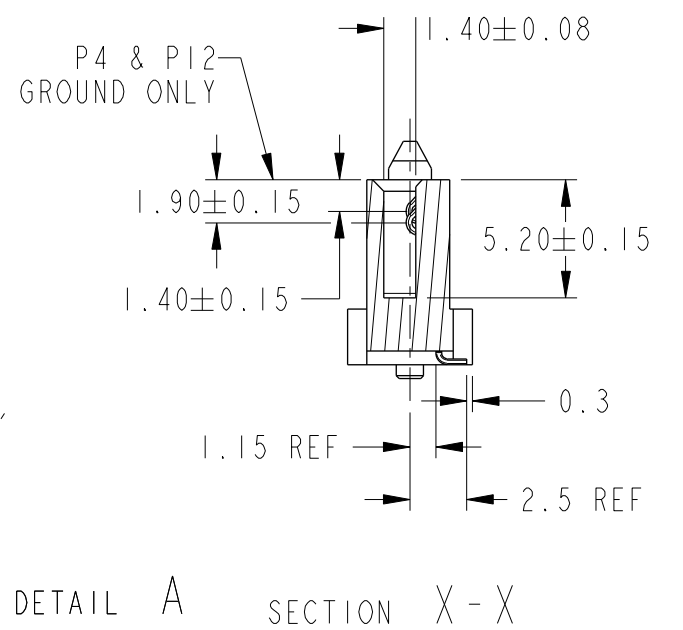
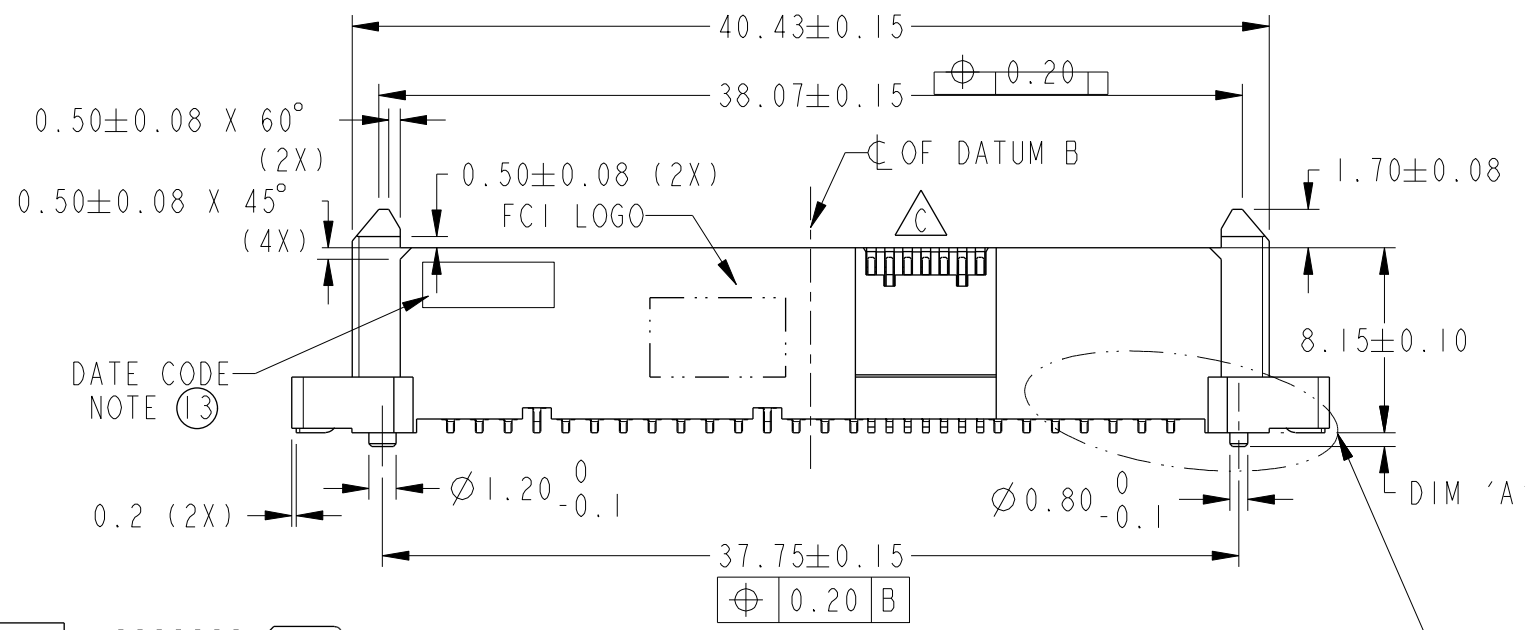
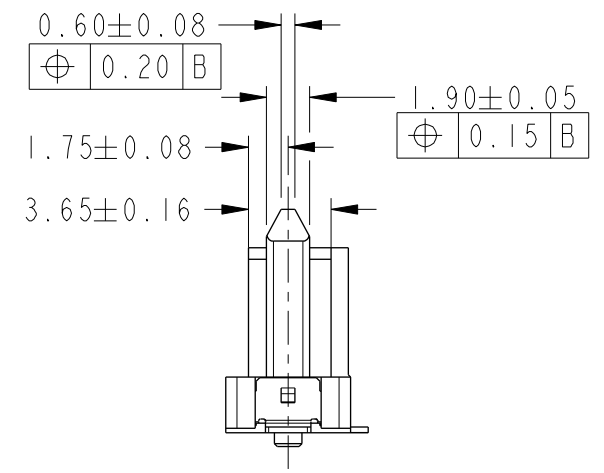
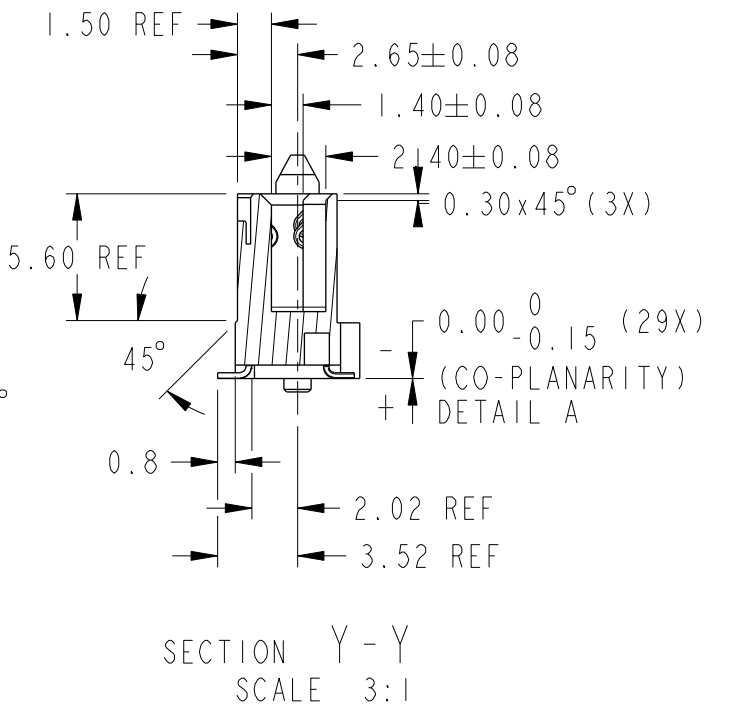
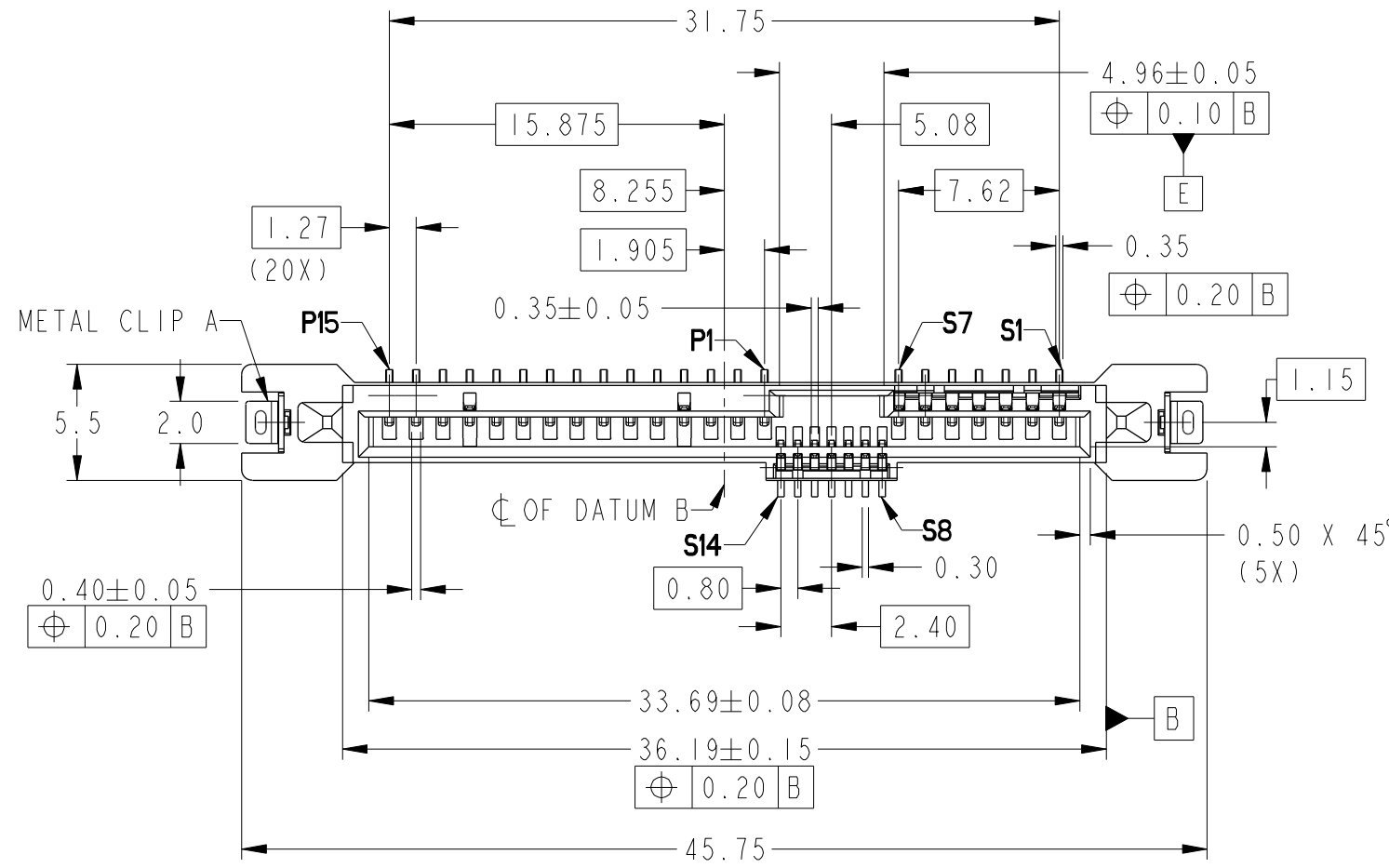


PRODUCT NUMBER  
SEE TABLE



spec ref	-	dr	M Srinivasan	2014/02/05	projection	mm	size	A3	scale	3:1
tolerance std	ISO 406 ISO 1101	eng	Noorhazlinda	2017/05/10		mm	ecn no	ELX-M-26065-1	rel level	Released
TOLERANCES UNLESS OTHERWISE SPECIFIED		chr	-	apppr			Koon-Poh Tay	2017/05/17		product family
surface	linear	0.X	±		cat. no.	Product - Customer Drw	sheet 1 of 5	dwg no 10125550	rev C	
	angular	0°	±2°							

Amphenol FCI

© 2016 AFCI

PRODUCT NUMBER	DIM 'A'	METAL CLIP A	PLATING	PICK-UP CAP A	PACKAGING	REMARKS	PRODUCT NUMBER	PLATING
10125550-001LF	1.0	② PCS	NOTE 2	NO	TRAY	NOTE ⑧	10125550-401LF	NOTE ⑩
10125550-001CLF				YES		NOTE ④ & ⑧	10125550-401CLF	
10125550-001C-TRLF				YES	NOTE ④ ⑥ & ⑧	10125550-401C-TRLF		

NOTES:

1. MATERIAL :  
 1) HOUSING : HIGH TEMP THERMOPLASTIC, UL 94V-0  
 COLOR : BLACK  
 2) TERMINAL : COPPER ALLOY  
 3) HOLD DOWN : COPPER ALLOY

②. FINISH :  
 1) TERMINAL : 30μ" Au PLATING (CONTACT POINT) OVER 50μ" NICKEL  
 2) SOLDER TAIL : 100μ" MIN Sn OVER 50μ" NICKEL  
 3) HOLD DOWN : 100μ" MIN Sn OVER 50μ" NICKEL

3. PER SFF REV 1.1, EXCEPT 0.8mm PITCH BUMP AREA.

④. PART WITH PICK-UP CAP, P/N XXXXXXXX-XXXC LF.

5. THE STD PACKAGING IS IN TRAY UNLESS OTHERWISE SPECIFIED.

⑥. PART NUMBER WITH SUFFIX "-TR" MEANS FOR TAPE & REEL PACKAGING (E.G. P/N: XXXXXXXX-XXXC-TRLF).

7. THE HOUSING WILL WITHSTAND EXPOSURE TO 260°C PEAK TEMPERATURE FOR 10 SECONDS IN A CONVECTION, INFRA-RED OR VAPOR PHASE REFLOW OVEN.

⑧. THIS PRODUCT MEETS EUROPEAN UNION DIRECTIVES AND OTHER COUNTRY REGULATIONS AS DESCRIBED IN GS-47-0004.

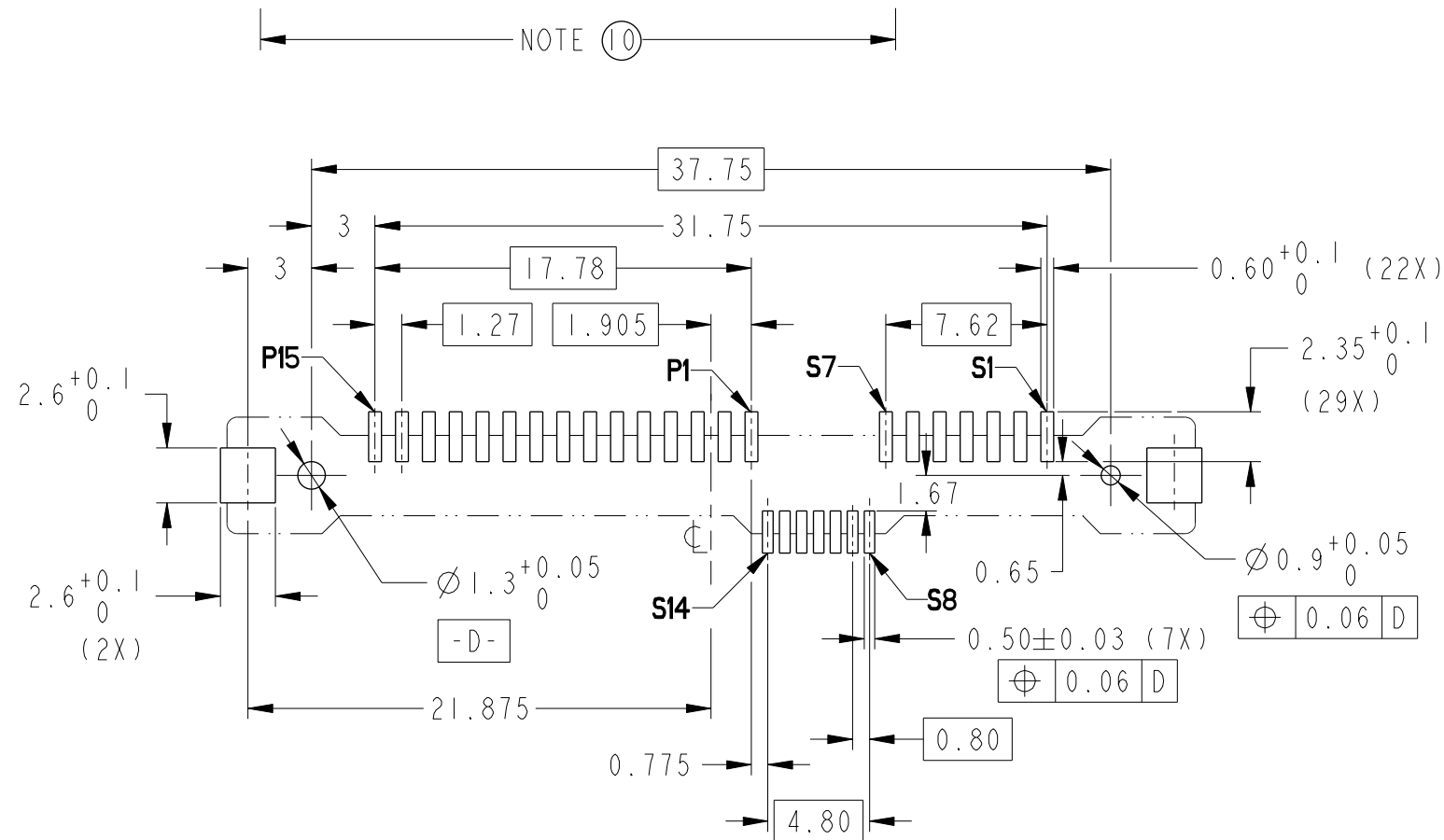
9. PART NUMBERS ENDING IN "LF" MEANS FOR NOTE 8 LEAD FREE IDENTIFICATION

⑩. FINISH :  
 1) TERMINAL : 15μ" GXT PLATING (CONTACT POINT) OVER 50μ" NICKEL  
 2) SOLDER TAIL : 100μ" MIN Sn OVER 50μ" NICKEL  
 3) HOLD DOWN : 100μ" MIN Sn OVER 50μ" NICKEL

11. A ⚠ SYMBOL WILL BE NEXT TO ANY DIMENSION, VIEW, OR NOTE WHICH HAS BEEN MODIFIED WITH THE CURRENT DRAWING REVISION.

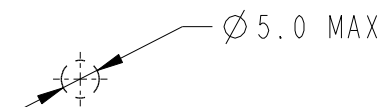
12. THE FOOTPRINT IS SAME AS 10120818

⑬. DATE CODE LOCATION. DATE CODE NO. YYMD (E.G. 14225)

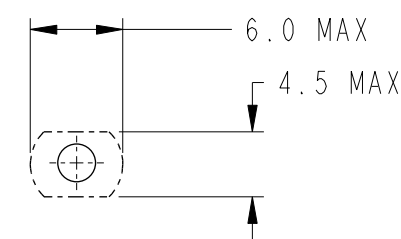


RECOMMENDED PCB LAYOUT

OPTION 1



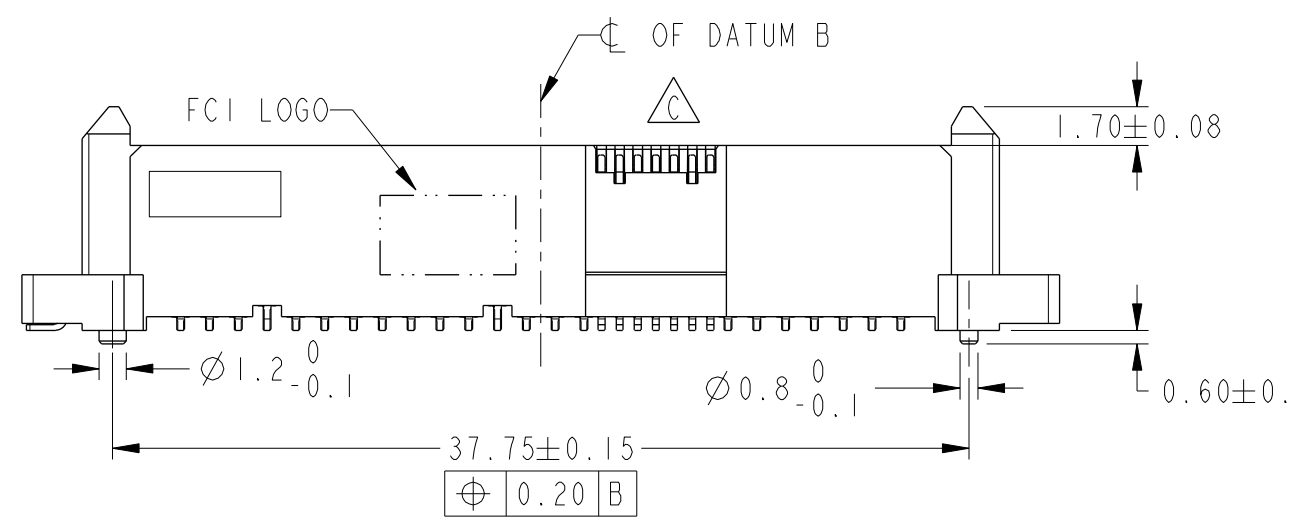
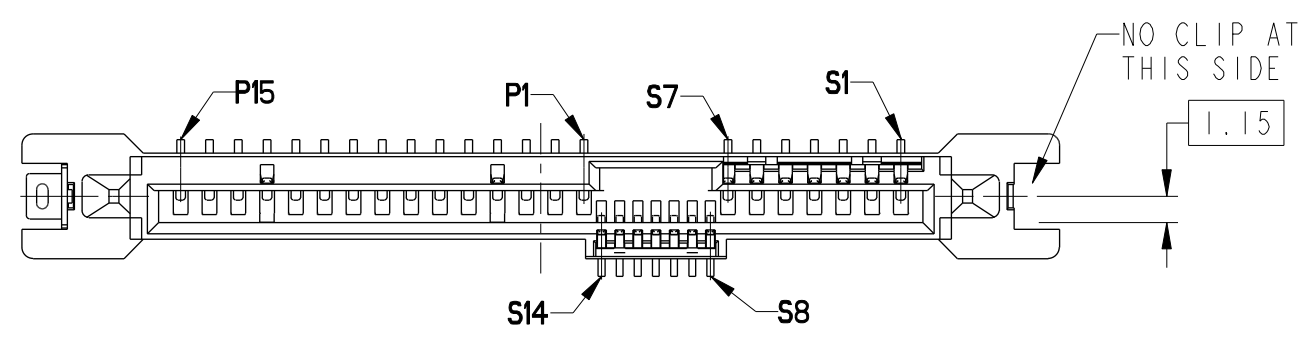
OPTION 2



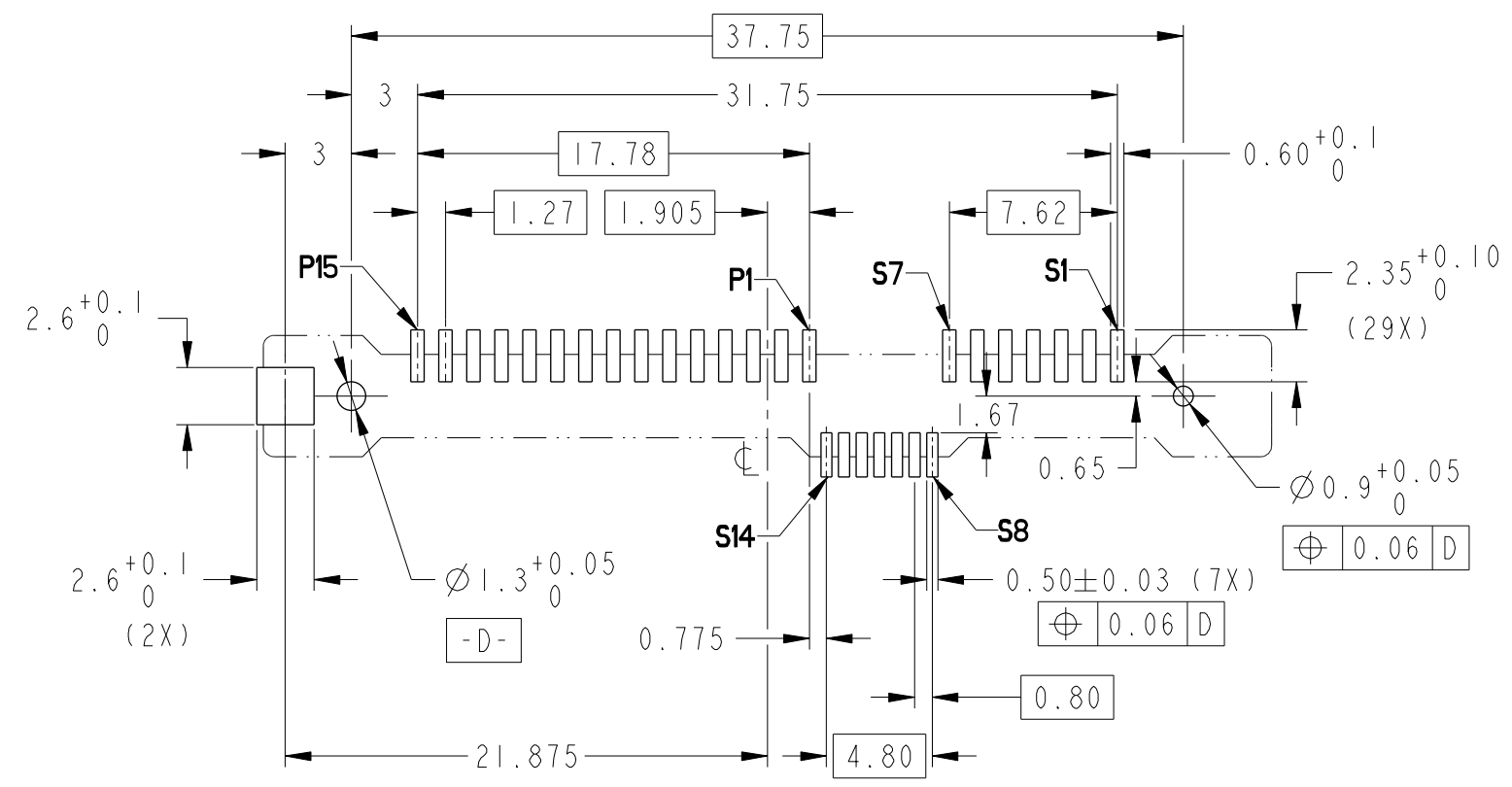
RECOMMENDED SUCTION HEAD SIZE

spec ref	-	dr	M Srinivasan	2014/02/05	projection	mm	size	A3	scale	3:1
tolerance std	ISO 406 ISO 1101	eng	Noorhazinda	2017/05/10			ecn no	ELX-M-26065-1	rel level	Released
TOLERANCES UNLESS OTHERWISE SPECIFIED		chr	-	2017/05/17						
surface	linear	0.X	± -	<b>Amphenol FCI</b>	SAS RECEPTACLE VERTICAL SMT TYPE ASSY		dwg no	10125550	rev	C
		0.XX	±0.20							
		0.XXX	± -							
ISO 1302	angular	0°	±2°	cat. no.	-	Product - Customer Drw	sheet 2 of 5			

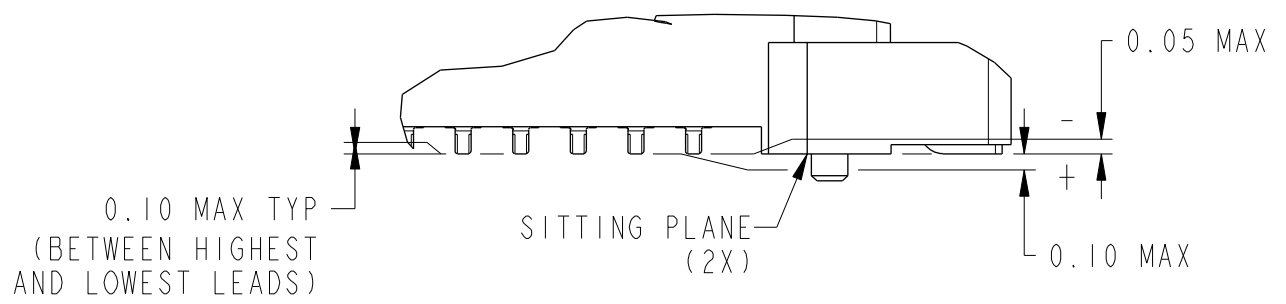
PRODUCT NUMBER	METAL CLIP A	PLATING	PICK-UP CAP A	PACKAGING	REMARKS	PRODUCT NUMBER	PLATING
10125550-002LF	1 PC	NOTE ②	NO	TRAY	NOTE ⑧	10125550-402LF	NOTE ⑩
10125550-002CLF			YES		NOTE ④ & ⑧	10125550-402CLF	
10125550-002C-TRLF			YES	TAPE & REEL	NOTE ④ ⑥ & ⑧	10125550-402C-TRLF	



ALL OTHER DIMENSIONS, REFER TO SHEET 1



RECOMMENDED PCB LAYOUT



DETAIL A  
SCALE 6:1

spec ref	-	dr	M Srinivasan	2014/02/05	projection	mm	size	A3	scale	3:1
tolerance std	ISO 406 ISO 1101	eng	Noorhazlinda	2017/05/10		mm	ecn no	ELX-M-26065-1	rel level	Released
TOLERANCES UNLESS OTHERWISE SPECIFIED		chr	-	-						
surface	linear	appr	Koon-Poh Tay	2017/05/17	product family	-	rel level	Released		
ISO 1302	angular	0°	±2°							
		0.X	±							
		0.XX	±0.20							
		0.XXX	±							

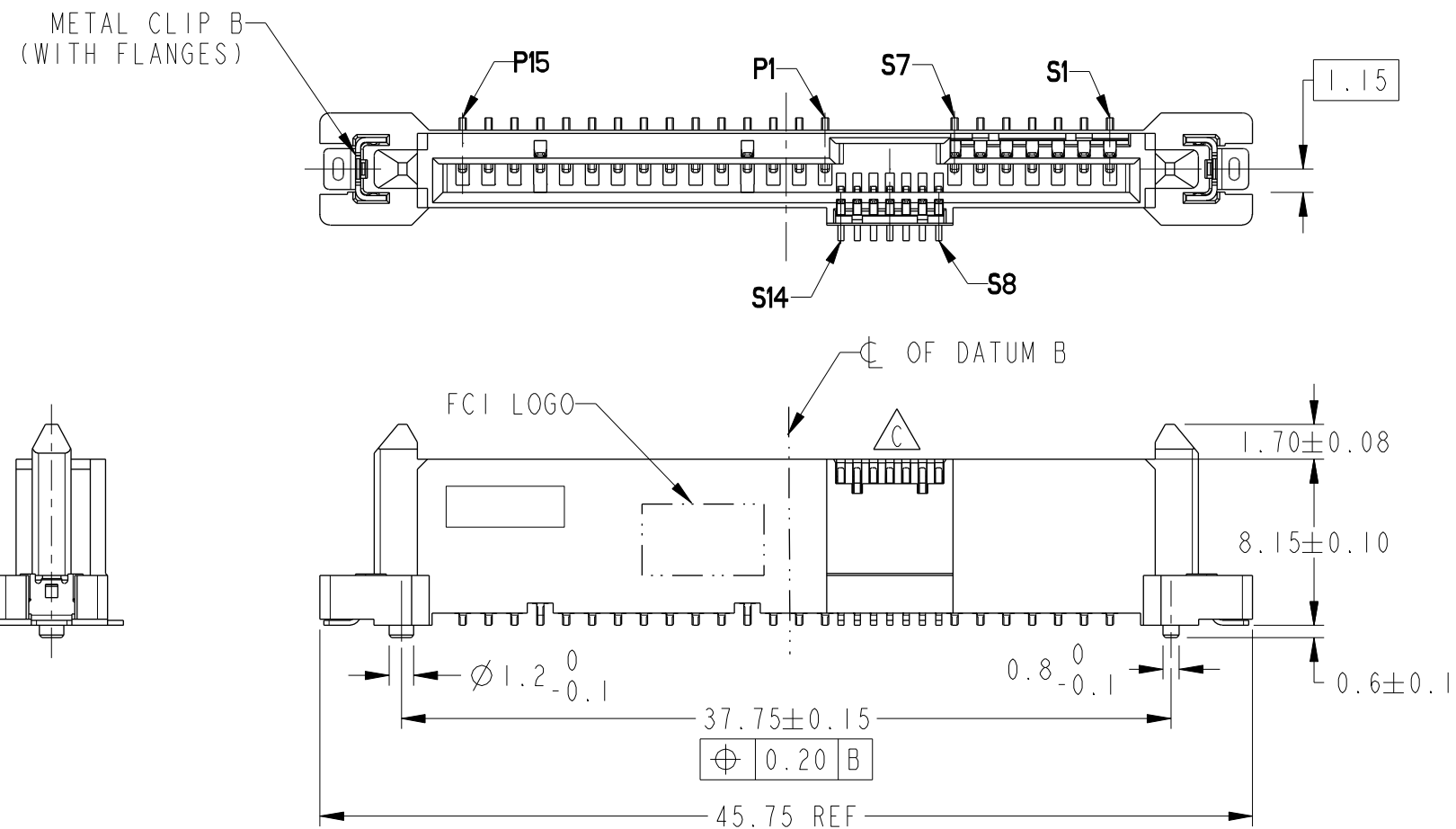
Amphenol FCI	SAS RECEPTACLE VERTICAL SMT TYPE ASSY	cat. no.	-	Product - Customer Drw	sheet 3 of 5
		dwg no	10125550	rev	C

Amphenol FCI

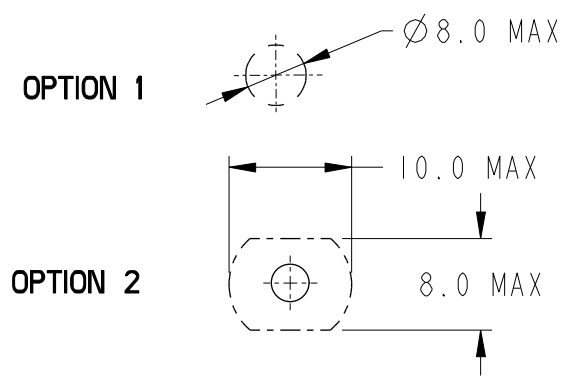
© 2016 AFCI

PRODUCT NUMBER	METAL CLIP B	PLATING	PICK-UP CAP B	PACKAGING	REMARKS	PRODUCT NUMBER	PLATING
10125550-003LF	2 PCS	NOTE ②	NO	TRAY	NOTE ⑧	10125550-403LF	NOTE ⑩
10125550-003CLF			YES		NOTE ④ & ⑧	10125550-403CLF	
10125550-003C-TRLF			YES	TAPE & REEL	NOTE ④ ⑥ & ⑧	10125550-403C-TRLF	

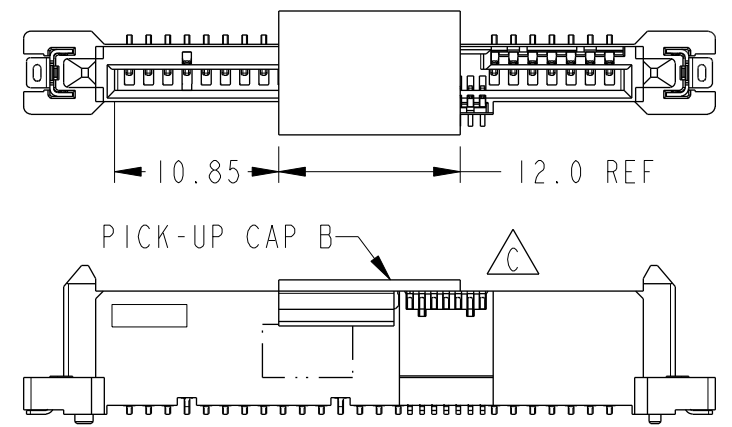
NOTE ⑩



ALL OTHER DIMENSIONS AND PCB LAYOUT, REFER TO -001LF



RECOMMENDED SUCTION HEAD SIZE



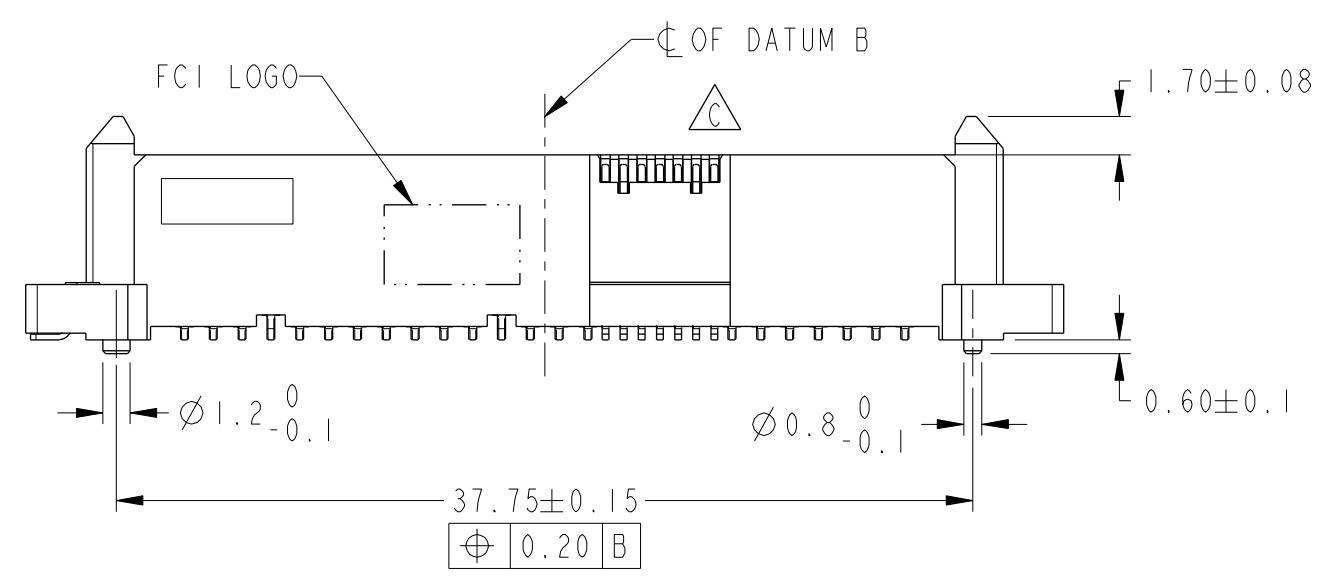
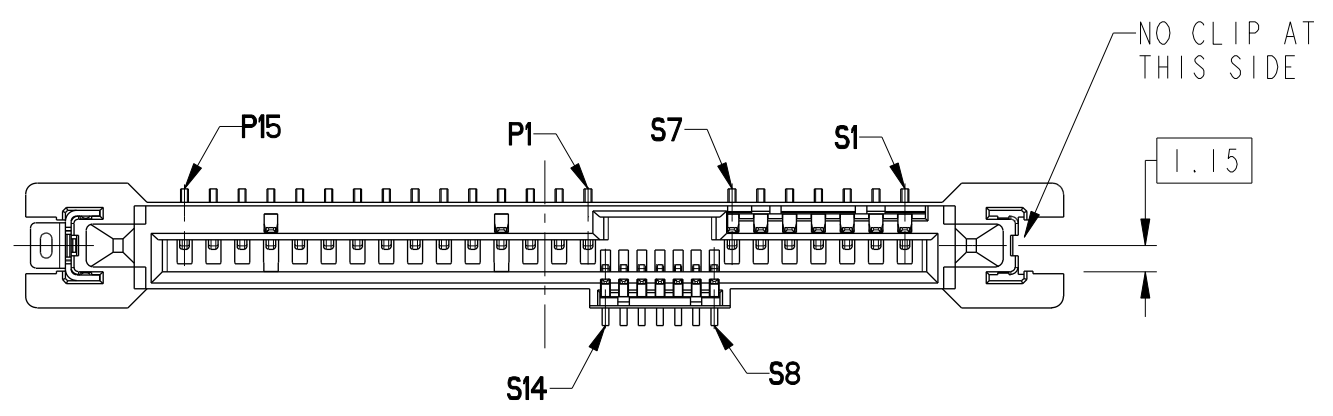
PART WITH PICK-UP CAP, SEE NOTE ④  
SCALE 2:1

spec ref	-	dr	M Srinivasan	2014/02/05	projection	mm	size	A3	scale	3:1
tolerance std	ISO 406 ISO 1101	eng	Noorhazlinda	2017/05/10			ecn no	ELX-M-26065-1		
TOLERANCES UNLESS OTHERWISE SPECIFIED		chr	-	-			rel level	Released		
surface	linear	appr	Koon-Poh Tay	2017/05/17	product family	SAS	rel level	Released		
	0.X ±	Amphenol FCI		SAS RECEPTACLE		dwg no	10125550		rev	C
	0.XX ±0.20			VERTICAL SMT TYPE ASSY						
	0.XXX ±									
	angular	0° ±2°			cat. no.	-	Product - Customer Drw		sheet 4 of 5	

Amphenol FCI

© 2016 AFCI

PRODUCT NUMBER	METAL CLIP B	PLATING	PICK-UP CAP B	PACKAGING	REMARKS	PRODUCT NUMBER	PLATING
10125550-004LF	1 PC	NOTE ②	NO	TRAY	NOTE ⑧	10125550-404LF	NOTE ⑩
10125550-004CLF			YES		NOTE ④ & ⑧	10125550-404CLF	
10125550-004C-TRLF			YES	TAPE & REEL	NOTE ④ ⑥ & ⑧	10125550-404C-TRLF	



ALL OTHER DIMENSIONS AND PCB LAYOUT, REFER TO -002LF

Amphenol FCI

© 2016 AFCI

spec ref	-	dr	M Srinivasan	2014/02/05	projection	mm	size	A3	scale	3:1
tolerance std	ISO 406 ISO 1101	eng	Noorhazlinda	2017/05/10			ecn no	ELX-M-26065-1		
TOLERANCES UNLESS OTHERWISE SPECIFIED		chr	-	-			product family	SAS	rel level	Released
surface	linear	0.X	± -	<b>Amphenol FCI</b>	SAS RECEPTACLE		cat. no. -	Product - Customer Drw	sheet 5 of 5	rev <b>C</b>
		0.XX	±0.20		VERTICAL SMT TYPE ASSY					
ISO 1302	angular	0°	±2°							