

REVISION AX

NOTES:

1. Ⓢ REPRESENTS A CRITICAL DIMENSION.
2. MAXIMUM PIN ROTATION: 2°.
3. MINIMUM PUSHOUT FORCE: 1 LB.
4. NOTE DELETED.
5. MINIMUM RETENTION FOR LOCKING CLIPS: 12 OZ.
6. MUST BE MEASURED AT BEND.
7. DUE TO THE HIGH AMOUNT OF INSERTION FORCE NEEDED, THE -LC OPTION IS NOT COMPATIBLE WITH AUTO PLACEMENT. SAMTEC RECOMMENDS MANUAL PLACEMENT FOR ALL ASSEMBLIES WITH THE -LC OPTION.
8. TUBES ARE STANDARD PACKAGING.
9. ORDERS WILL BE PACKAGED ACCORDING TO THE SAMTEC PACKAGING EFFICIENCY STANDARDS (SPES) FOUND ON WWW.SAMTEC.COM.
10. ATTACH LABEL TO EACH REEL.
11. 2 AND 3 POSITION PARTS WITH -K OPTION MUST SHIP IN TAPE & REEL.

DO NOT SCALE FROM THIS PRINT

LTMM-1XX-XX-XX-D-XX-XX-X-XX

No OF POSITIONS
-02 THRU -25

TERMINAL STYLE

- 01: .100[2.54] POST HEIGHT (STANDARD)
- 02: .120[3.05] POST HEIGHT (SEE TABLE 1)

PLATING SPECIFICATION

- G: 20μ" SELECTIVE GOLD IN CONTACT AREA, 3μ" SELECTIVE GOLD ON TAIL
- T: MATTE TIN CONTACT AND TAIL
- S: 30μ" SELECTIVE GOLD IN CONTACT AREA, MATTE TIN ON TAIL
- L: 10μ" SELECTIVE GOLD IN CONTACT AREA, MATTE TIN ON TAIL
- F: 3μ" SELECTIVE GOLD IN CONTACT AREA, MATTE TIN ON TAIL
- H: 30μ" SELECTIVE GOLD IN CONTACT AREA, 3μ" SELECTIVE GOLD ON TAIL
- SM: 30μ" SELECTIVE GOLD IN CONTACT AREA, MATTE TIN ON TAIL
- TM: MATTE TIN ON ENTIRE PIN
- LM: 10μ" SELECTIVE GOLD IN CONTACT AREA, MATTE TIN ON TAIL
- FM: 3μ" SELECTIVE GOLD IN CONTACT AREA, MATTE TIN ON TAIL

PACKAGING

- BLANK: TUBES (SEE NOTE 8 & 9) (SEE FIG 8, SHT 4)
- TR: TAPE & REEL (SEE NOTES 9, 10, & 11) (SEE FIG 7, SHT 4)
- FR: FULL REEL QTY TAPE & REEL (SEE NOTES 9, 10, & 11)
- (-TR & -FR PACKAGING ARE

PICK & PLACE OPTION

- P: PICK & PLACE PAD (USE PPP-24, SEE FIG 4, SHT 2) (-SM OPTION ONLY) (ONLY AVAILABLE IN 04-25 POSITIONS)
- M: METAL PICK AND PLACE PAD (USE MPP-07, SEE FIG 5, SHT 2) (-SM OPTION ONLY)
- K: POLYIMIDE FILM (SEE NOTE 11) (USE K-DOT-.295-.406-.005) (SEE FIG 6, SHT 3) (-SM OPTION ONLY)

POLARIZED OPTION

XX INDICATES POS TO BE OMMITTED

OPTION

- LEAVE BLANK FOR THROUGH HOLE (SEE FIG 1 & TABLE 1)
- RA: RIGHT ANGLE (SEE FIG 2, SHT 2 & TABLE 1)
- SM: SURFACE MOUNT (SEE FIG 3, SHT 3 & TABLE 1)
- LC: LOCKING CLIP (SEE NOTE 7) (USE LC-05-TM FOR TH STYLE, SEE FIG 1) (USE LC-07-TM FOR -SM STYLE, SEE FIG 3, SHT 3) (NOT AVAILABLE FOR -RA STYLE)

ROW SPECIFICATION

- D: DOUBLE (USE LTMM-XX-D-LC)

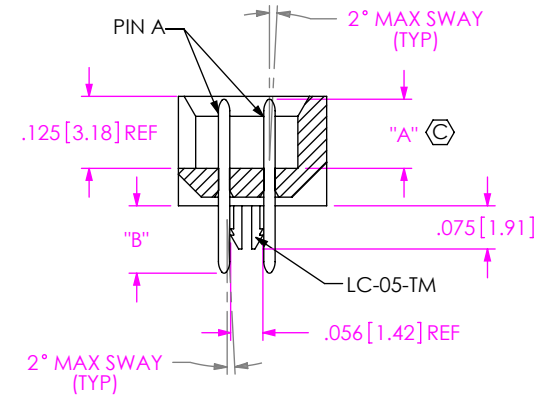
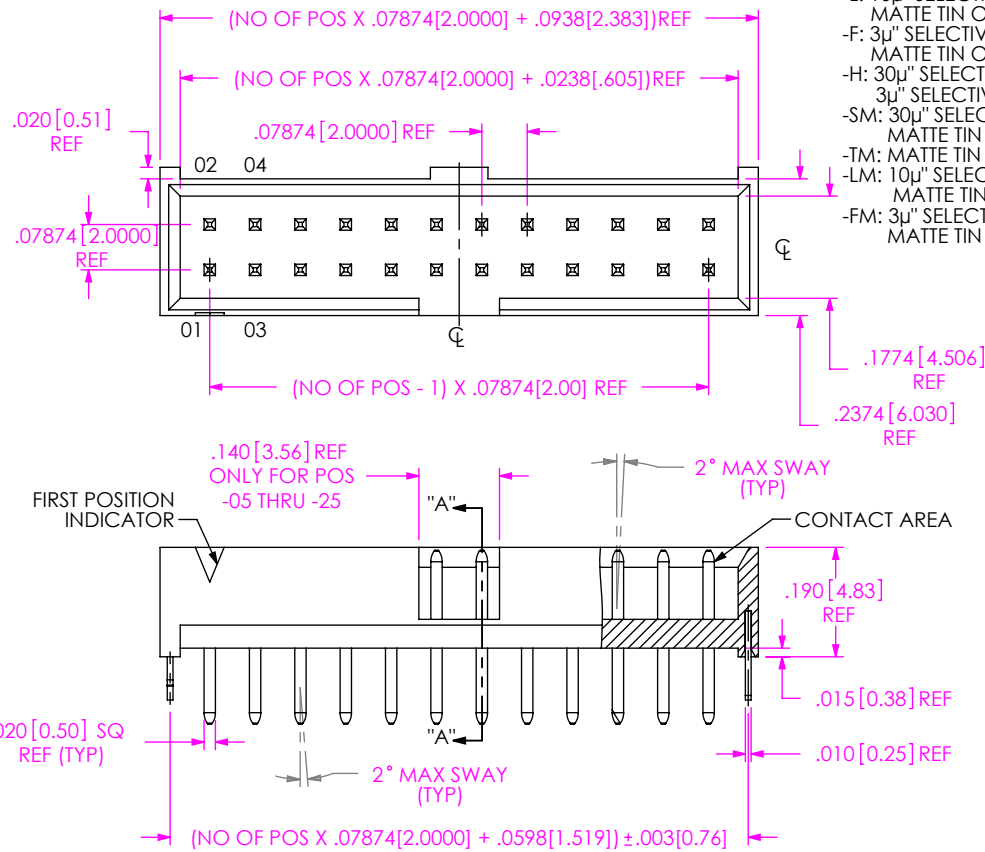


FIG 1
THROUGH HOLE
LTMM-112-02-XX-D-LC SHOWN

TABLE 1

THROUGH HOLE (SEE FIG 1)	LEAD STYLE	"A"	"B" REF	"C" REF	PIN A	PIN B
	-01	.100 [2.54]	.090 [2.30]	N/A	T-1S13-04-X-2	N/A
	-02	.120 [3.05]	.117 [3.00]	N/A	T-1S13-07-X-2	N/A
RIGHT ANGLE (SEE FIG 2, SHT 2)	-01	.100 [2.54]	.232 [5.90]	.390 [9.91]	T-1S13-05-X-2	T-1S13-06-X-2
	-02	.120 [3.05]	.228 [5.80]	.386 [9.80]	T-1S13-19-X-2	T-1S13-22-X-2
SURFACE MOUNT (SEE FIG 3, SHT 3)	-01	.100 [2.54]	.172 [4.40]	N/A	T-1S13-07-X-2	N/A
	-02	.120 [3.05]	.173 [4.40]	N/A	T-1S13-20-X-2	N/A

UNLESS OTHERWISE SPECIFIED, DIMENSIONS ARE IN INCHES. TOLERANCES ARE:
DECIMALS ANGLES
.XX: ±.01 [0.3] 2°
.XXX: ±.005 [0.13]
.XXXX: ±.0020 [0.051]

PROPRIETARY NOTE
THIS DOCUMENT CONTAINS CONFIDENTIAL AND PROPRIETARY INFORMATION AND ALL DESIGN, MANUFACTURING, REPRODUCTION, USE, PATENT RIGHTS AND SALES RIGHTS ARE EXPRESSLY RESERVED BY SAMTEC, INC. THIS DOCUMENT SHALL NOT BE DISCLOSED, IN WHOLE OR PART, TO ANY UNAUTHORIZED PERSON OR ENTITY NOR REPRODUCED, TRANSFERRED OR INCORPORATED IN ANY OTHER PROJECT IN ANY MANNER WITHOUT THE EXPRESS WRITTEN CONSENT OF SAMTEC, INC.

MATERIAL: DO NOT SCALE DRAWING SHEET SCALE: 3:1
INSULATOR: LCP, COLOR: BLACK
TERMINAL: PHOSPHER BRONZE

DESCRIPTION:

LTMM ASSEMBLY

DWG. NO.

LTMM-1XX-XX-XX-D-XX-XX-X-XX

BY: BRYANT 05/28/1992 SHEET 1 OF 4



520 PARK EAST BLVD, NEW ALBANY, IN 47150
PHONE: 812-944-6733 FAX: 812-948-5047
e-Mail: info@SAMTEC.com code: 55322

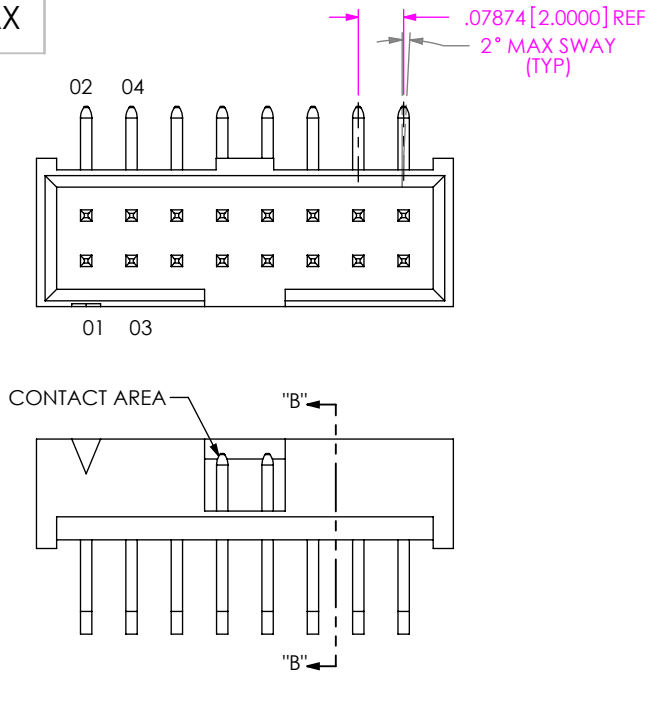
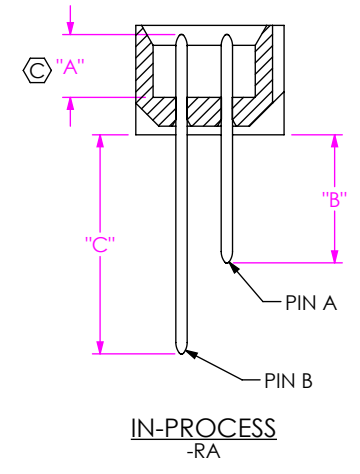
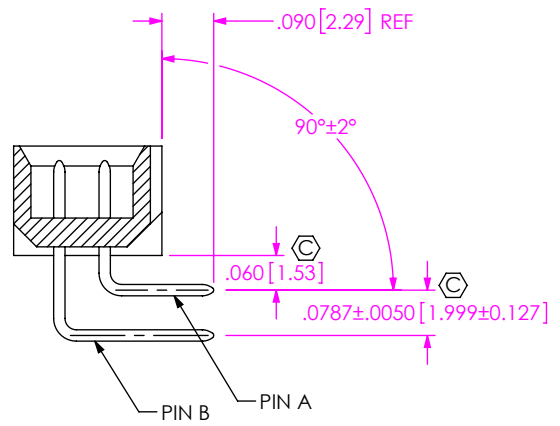


FIG 2
RIGHT ANGLE
LTMM-108-01-XX-D-RA SHOWN
(DIFFERENT AS SHOWN, OTHERWISE SAME AS FIG 1)



SECTION "B"-"B"

NOTE: "R" = USED MEASURED DIMENSION
"S" = $\{("R"-.250 [6.35]) / 2\} \pm .020 [0.51]$

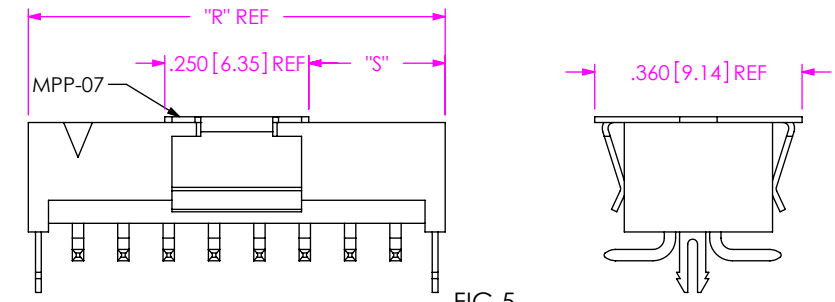


FIG 5
-M: METAL PICK AND PLACE PAD
LTMM-108-01-XX-D-SM-LC-M SHOWN
FOR SURFACE MOUNT OPTIONS ONLY
(DIFFERENT AS SHOWN, OTHERWISE SAME AS FIG 3)

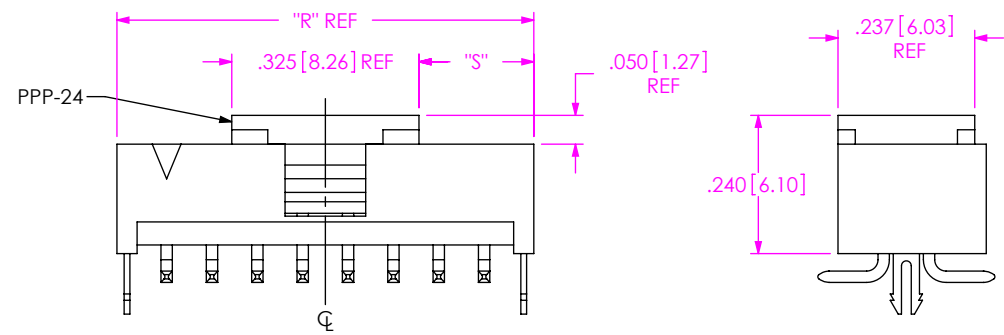


FIG 4
-P: PICK AND PLACE PAD
LTMM-108-01-XX-D-SM-LC-P SHOWN
FOR SURFACE MOUNT OPTIONS ONLY
(ONLY AVAILABLE IN 04-25 POSITIONS)
(DIFFERENT AS SHOWN, OTHERWISE SAME AS FIG 3)

NOTE: "R" = USED MEASURED DIMENSION
"S" = $\{("R"-.325 [8.26]) / 2\} \pm .020 [.51]$

PROPRIETARY NOTE
THIS DOCUMENT CONTAINS CONFIDENTIAL AND PROPRIETARY INFORMATION AND ALL DESIGN, MANUFACTURING, REPRODUCTION, USE, PATENT RIGHTS AND SALES RIGHTS ARE EXPRESSLY RESERVED BY SAMTEC, INC. THIS DOCUMENT SHALL NOT BE DISCLOSED, IN WHOLE OR PART, TO ANY UNAUTHORIZED PERSON OR ENTITY NOR REPRODUCED, TRANSFERRED OR INCORPORATED IN ANY OTHER PROJECT IN ANY MANNER WITHOUT THE EXPRESS WRITTEN CONSENT OF SAMTEC, INC.

DO NOT SCALE DRAWING
SHEET SCALE: 3:1

samtec
520 PARK EAST BLVD, NEW ALBANY, IN 47150
PHONE: 812-944-6733 FAX: 812-948-5047
e-Mail: info@SAMTEC.com code: 55322

DESCRIPTION:	LTMM ASSEMBLY
DWG. NO.	LTMM-1XX-XX-XX-D-XX-XX-X-XX
BY: BRYAN T	05/28/1992 SHEET 2 OF 4

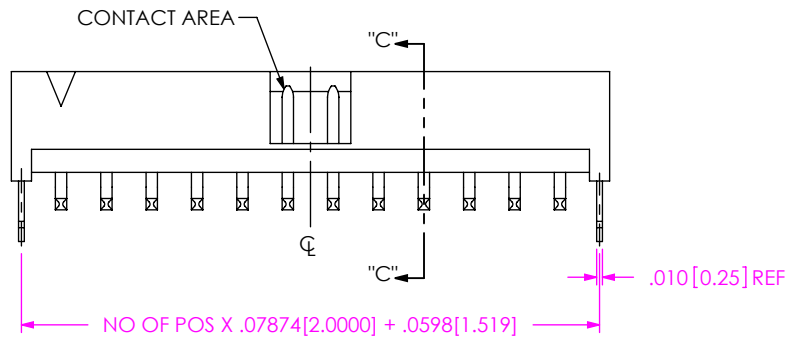
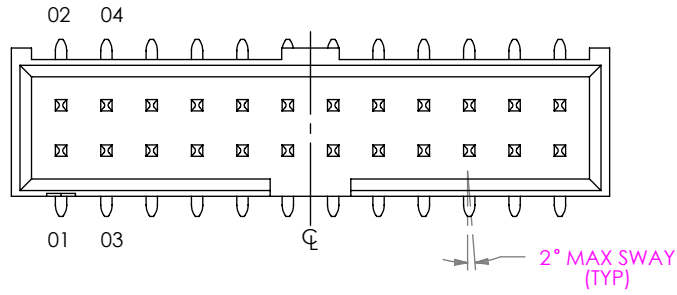
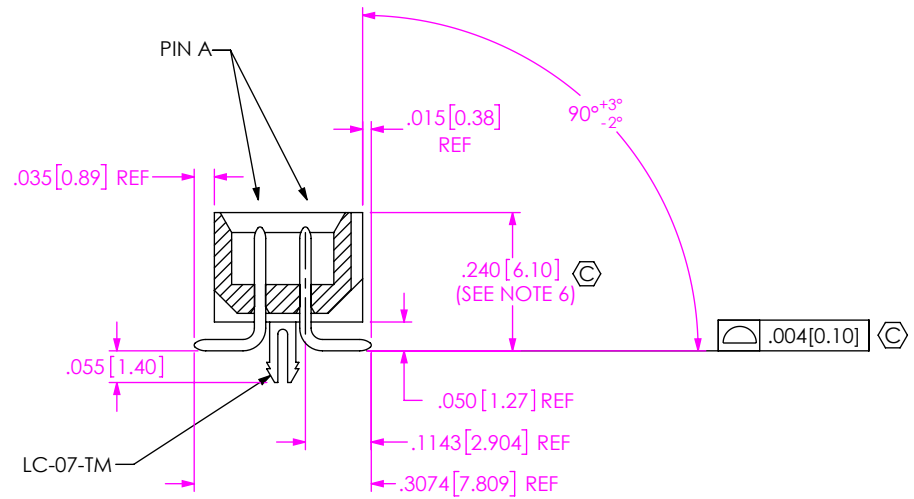
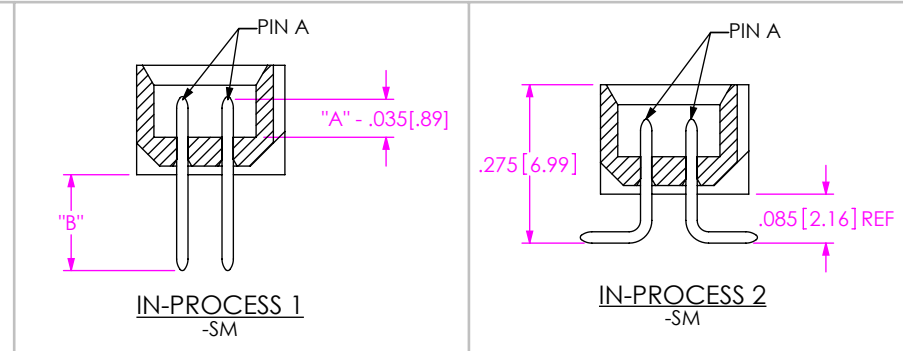


FIG 3
SURFACE MOUNT
LTMM-108-01-XX-D-SM-LC SHOWN
(DIFFERENT AS SHOWN, OTHERWISE SAME AS FIG 1)



SECTION "C"-"C"

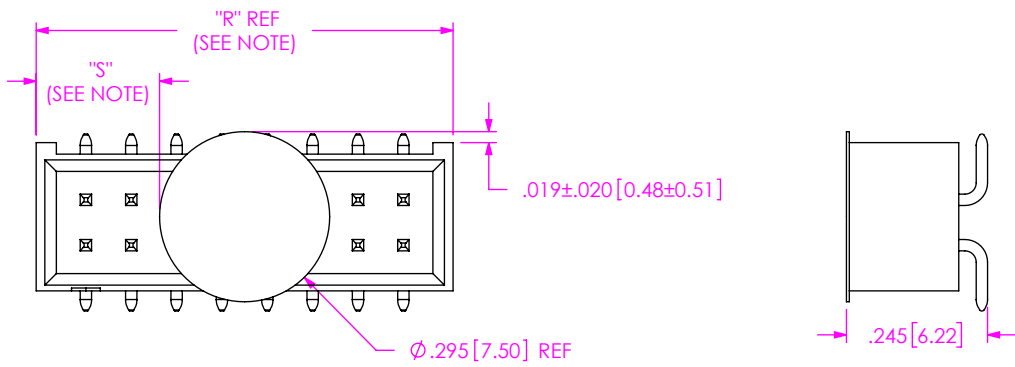


FIG 6
-K OPTION (POLYIMIDE FILM)
LTMM-108-01-XX-D-SM-K SHOWN
FOR SURFACE MOUNT OPTIONS ONLY
(DIFFERENT AS SHOWN, OTHERWISE SAME AS FIG 3)

NOTE: "R" = USED MEASURED DIMENSION
"S" = {("R"-.2953 [7.500]) / 2} ±.020 [.51]

PROPRIETARY NOTE
THIS DOCUMENT CONTAINS CONFIDENTIAL AND PROPRIETARY INFORMATION AND ALL DESIGN, MANUFACTURING, REPRODUCTION, USE, PATENT RIGHTS AND SALES RIGHTS ARE EXPRESSLY RESERVED BY SAMTEC, INC. THIS DOCUMENT SHALL NOT BE DISCLOSED, IN WHOLE OR PART, TO ANY UNAUTHORIZED PERSON OR ENTITY NOR REPRODUCED, TRANSFERRED OR INCORPORATED IN ANY OTHER PROJECT IN ANY MANNER WITHOUT THE EXPRESS WRITTEN CONSENT OF SAMTEC, INC.

DO NOT SCALE DRAWING

SHEET SCALE: 3:1



520 PARK EAST BLVD, NEW ALBANY, IN 47150
PHONE: 812-944-6733 FAX: 812-948-5047
e-Mail: info@SAMTEC.com code: 55322

DESCRIPTION:	LTMM ASSEMBLY
DWG. NO.	LTMM-1XX-XX-XX-D-XX-XX-X-XX
BY: BRYAN T	05/28/1992 SHEET 3 OF 4

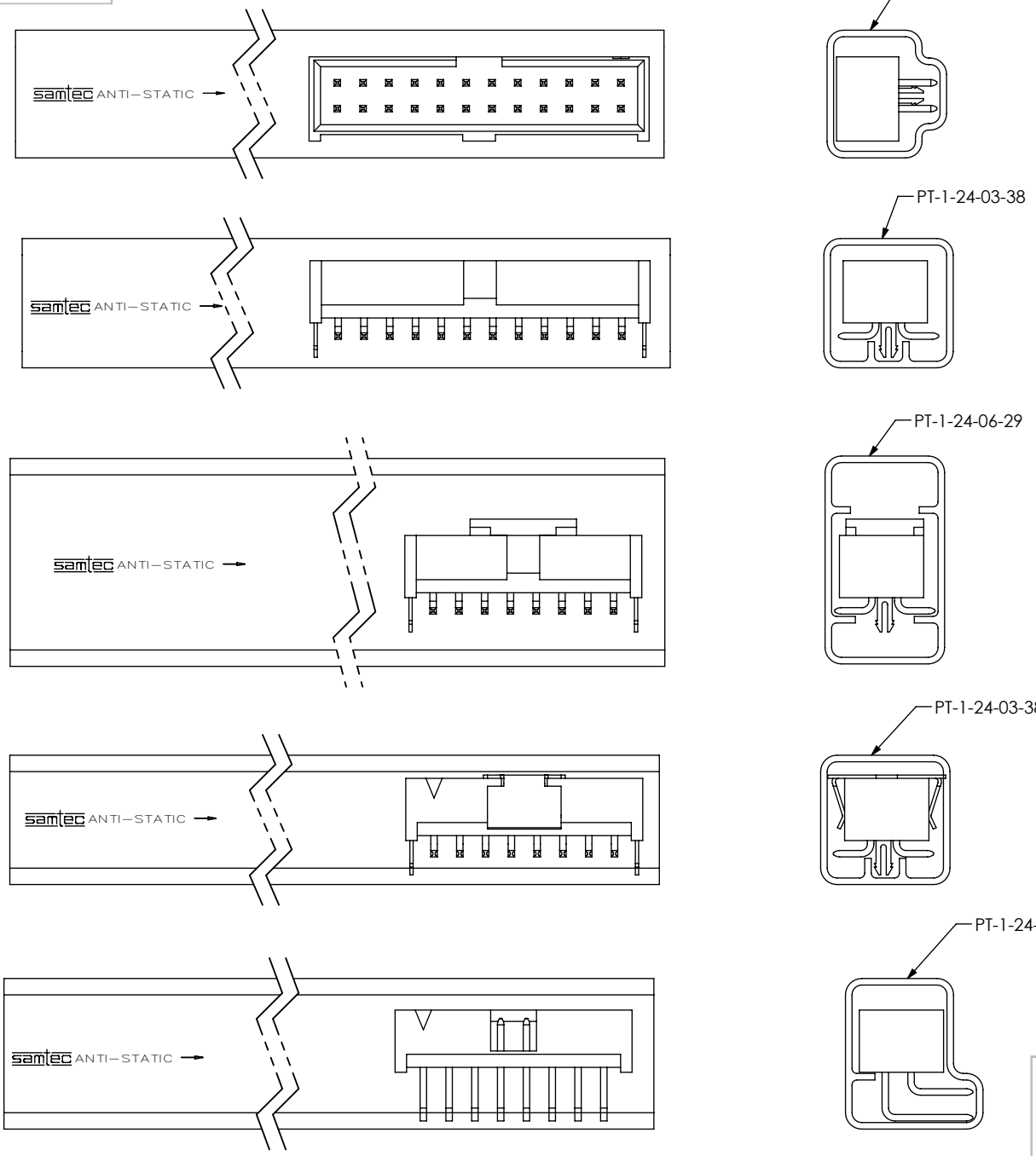


FIG 8
TUBE PACKAGING VIEW

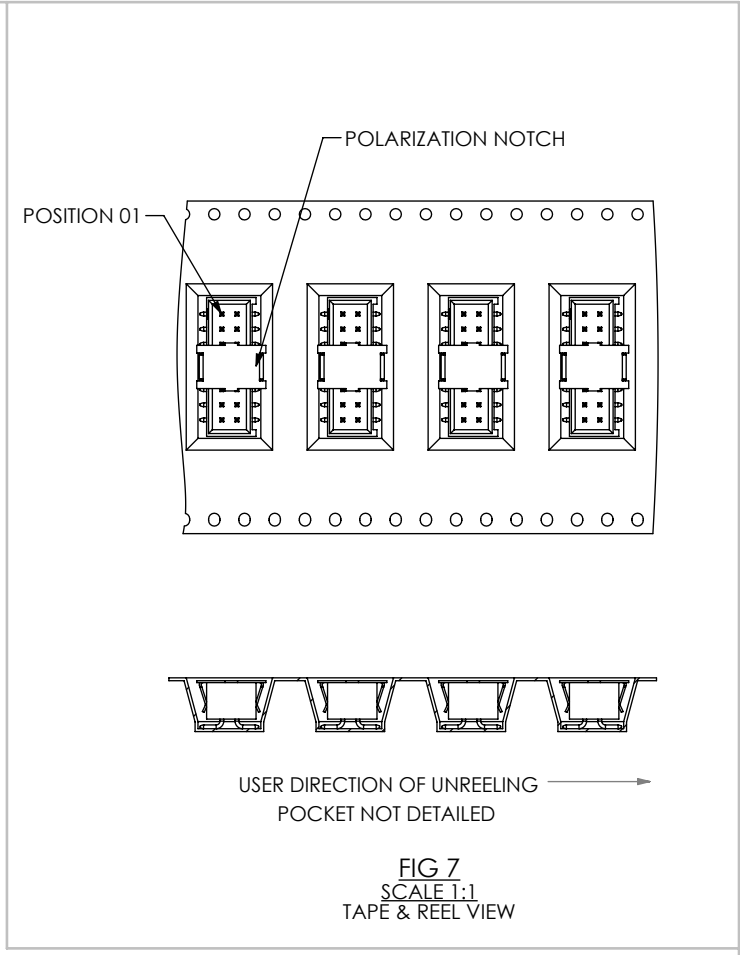


TABLE 2		
OPTIONS	PACKAGING TUBE	PLUG
STANDARD, -LC	PT-1-24-02-38	TP-03
-SM, -SM-LC, -SM-M, -SM-K	PT-1-24-03-38	TP-03
-SM-LC-P, -SM-P	PT-1-24-06-29	TP-07
-RA	PT-1-24-01-45	TP-03

PROPRIETARY NOTE
 THIS DOCUMENT CONTAINS CONFIDENTIAL AND PROPRIETARY INFORMATION AND ALL DESIGN, MANUFACTURING, REPRODUCTION, USE, PATENT RIGHTS AND SALES RIGHTS ARE EXPRESSLY RESERVED BY SAMTEC, INC. THIS DOCUMENT SHALL NOT BE DISCLOSED, IN WHOLE OR PART, TO ANY UNAUTHORIZED PERSON OR ENTITY NOR REPRODUCED, TRANSFERRED OR INCORPORATED IN ANY OTHER PROJECT IN ANY MANNER WITHOUT THE EXPRESS WRITTEN CONSENT OF SAMTEC, INC.

DO NOT SCALE DRAWING

SHEET SCALE: 2:1

samtec
 520 PARK EAST BLVD, NEW ALBANY, IN 47150
 PHONE: 812-944-6733 FAX: 812-948-5047
 e-Mail: info@SAMTEC.com code: 55322

DESCRIPTION: **LTMM ASSEMBLY**

DWG. NO. **LTMM-1XX-XX-XX-D-XX-XX-X-XX**

BY: BRYAN T 05/28/1992 SHEET 4 OF 4