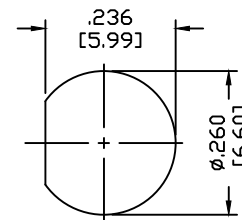
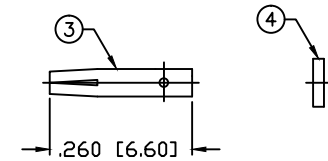
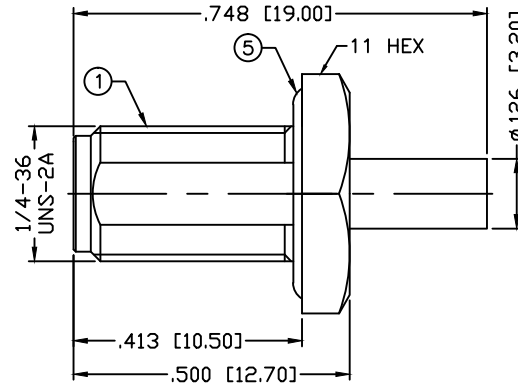
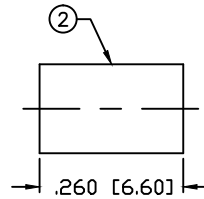
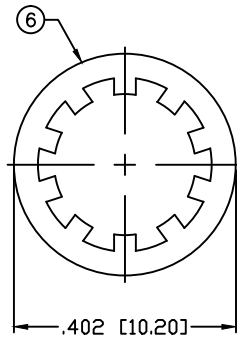
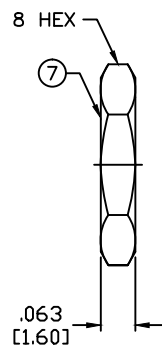


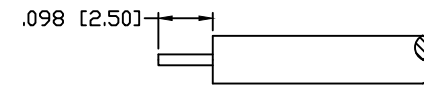
PART NO.

RSA-3560-1-SR1

REV	DESCRIPTION	DWN	DATE	APPROVED
A	ADDED MOUNTING CONFIG / UPDATED DWG FORMAT	CZS	08/16/16	JDMc



RECOMMENDED MOUNTING HOLE



RECOMMENDED STRIPPING DIMENSIONS

SPECIFICATIONS:

IMPEDANCE: 50 Ohms

FREQUENCY RANGE: 0-18 GHz

INSERTION LOSS(dB): $0.03 \times \sqrt{f(\text{GHz})}$

VSWR: 1.3 MAX.

WORKING VOLTAGE: 500 V rms Max. © Sea Level

INSULATION RESISTANCE: 5k M Ohms min.

TEMPERATURE RANGE: -65°C TO 85°C

FOR .085 SEMI RIGID, RG-405/U & BELDEN 1671A CABLE

#	DESCRIPTION	QTY	MATERIAL	FINISH
7	HEX NUT	1	BRASS	GOLD, 3μ "
6	LOCK WASHER	1	BRASS	GOLD, 3μ "
5	GASKET	1	SILICONE	----
4	INSULATOR	1	PTFE	----
3	CONTACT	1	BeCu	GOLD, 50μ "
2	INSULATOR	1	PTFE	----
1	BODY	1	BRASS	GOLD, 3μ "

CUSTOMER
OUTLINE DRAWINGALL DIMENSIONS
ARE REFERENCE ONLYUNLESS OTHERWISE SPECIFIED:
DIMENSIONS ARE IN INCHES
AND [MILLIMETERS]DRAWN
C. ZUNIGA 08/16/16
CHECKEDORJ DRAWN
C. ZUNIGA 1/28/02**RoHS
COMPLIANT**PROPRIETARY AND CONFIDENTIAL
THIS DRAWING CONTAINS
INFORMATION PROPRIETARY TO
RF INDUSTRIES. ANY
UNAUTHORIZED USE OF THIS
DRAWING IS EXPRESSLY
PROHIBITED WITHOUT WRITTEN
PERMISSION FROM RF
INDUSTRIES. ANY VIOLATION IS
PUNISHABLE UNDER U.S.
COPYRIGHT LAWS.**RFconnectors**
DIVISION OF RF INDUSTRIES, LTD.7610 MIRAMAR RD.
SAN DIEGO, CA 92126
(858) 549-6340
(858) 549-6345 FAX**SMA JACK, BULKHEAD**

SIZE	CABLE GROUP	DWG NO.	REV
A	SR1	RSA-3560-1-SR1	A
SCALE: NTS	ENGINEERING ID: 008974	SHEET 1 OF 1	