

Features

- Noncorrosive
- Easy assembly
- Low weight
- Fully safe



FOR WLP350, MWLP350 SERIES

Derating Guidelines

WLP350/MWLP350: De-rate to 70% of values mentioned in temperature de-rating curves of open frame models at all load and ambient conditions.

Contents

Mounting Base, Cover, Insulator, Fixing Screws

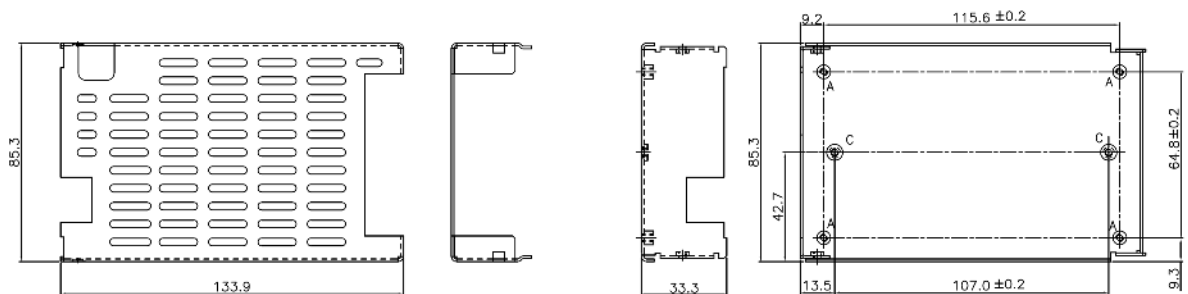
Mechanical Dimensions

Cover and Base Material EG(Zintec)/CRCA/GI 1.0mm thick (Powder coating/ Passivation/ ED coating black)

Marked A: PCB MTG; B: COVER MTG; C: SYSTEM MTG, M3 Thread

All dimensions are in mm. General tolerance :+/-1.0

Mechanical Drawing



PARTS	DETAIL	QTY	LOCATION
1 COVER KIT BASE	SCREW PH16X13X0.8MM	4 NOS	AT "A"
2 COVER KIT TOP COVER	SCREW Z25K 43X5MM,130DEG	2 NOS	AT "B"
3 INSULATOR MYLAR MYLAR NOS1	TO BE PLACED UNDER THE PSU IN CK	1 NO	BETWEEN PCB & CK BASE
4 SYSTEM MTG (NOT SUPPLIED WITH COVER KIT)	SCREW THREAD M3X0.5 3.0 MM MAX PENETRATION	2 NOS	AT "C"

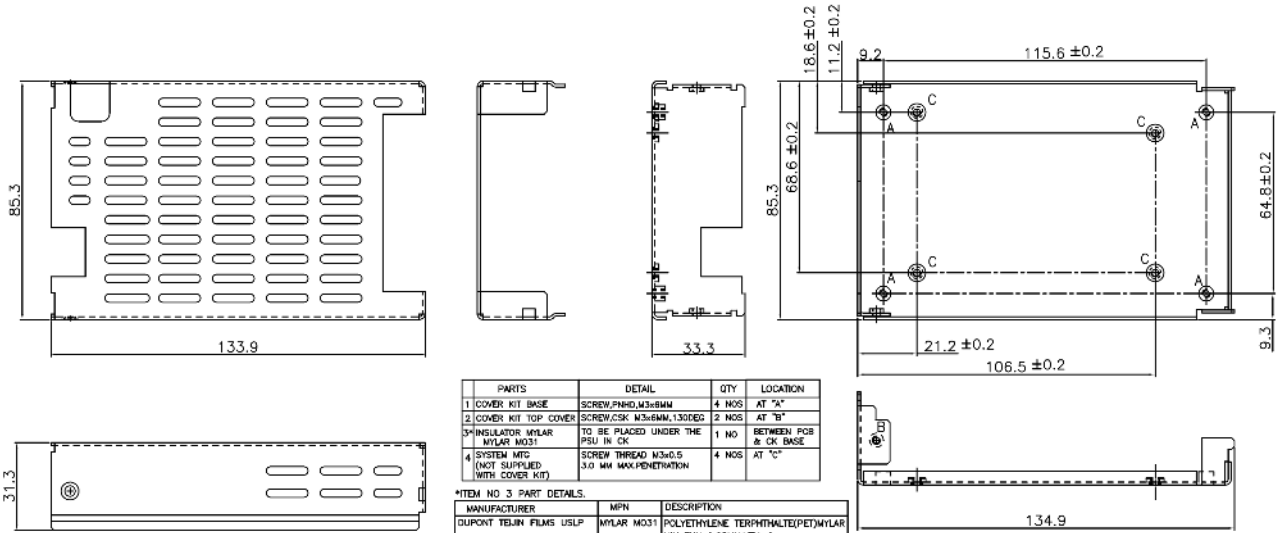
ITEM NO 3 PART DETAILS.		
MANUFACTURER	MFR	DESCRIPTION
DUPONT TEIJIN FILMS USLP	MYLAR NOS1	POLYETHYLENE TEREPHTHALATE/PET/MYLAR MIN THK 0.25MM,VTM-2

WLP350-CK.
MECHANICAL OUTLINE DIMENSIONS.



Innovations in Power

Mechanical Drawing



WLP350-CK1.
MECHANICAL OUTLINE DIMENSIONS.