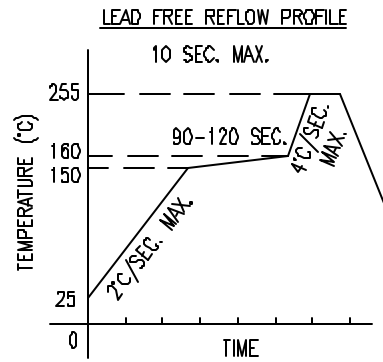
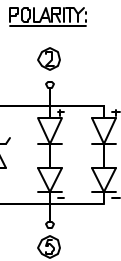
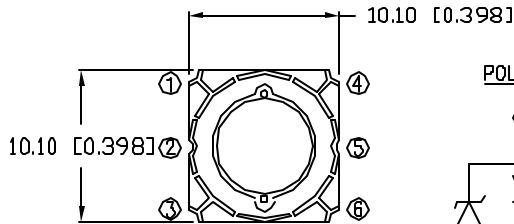
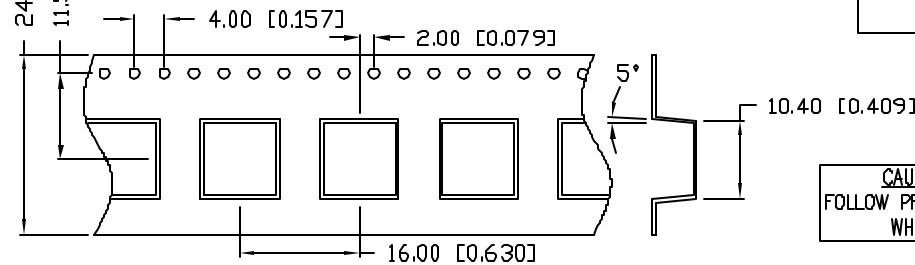
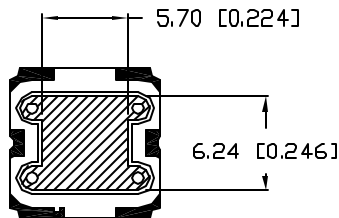
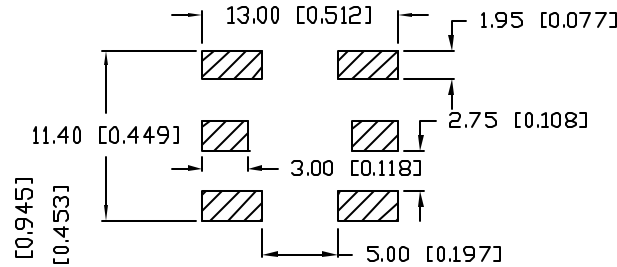
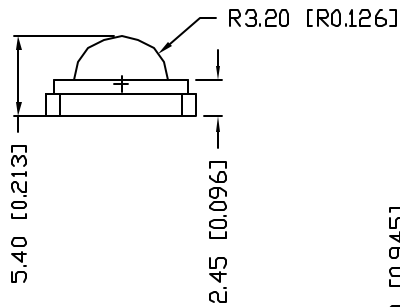


PRELIMINARY IN P/N DIR



TOTAL TIME ABOVE 220°C IS 60 SECONDS MAX.

PAD LAYOUT:



ELECTRO-OPTICAL CHARACTERISTICS TA=25°C

| PARAMETER | SYMBOL | MIN | TYP | MAX | UNITS | TEST COND |
|--------------------|----------------|------|------|-------|----------|-----------------------|
| PEAK WAVELENGTH | | | | | nm | |
| FORWARD VOLTAGE | V _f | 6.6 | | 8.0 | V | I _f =350mA |
| REVERSE VOLTAGE | V _r | 5 | | | V | I _r =10μA |
| AXIAL INTENSITY | I _v | 130 | | 250 | Lm | I _f =350mA |
| VIEWING ANGLE | | | 130 | | 2x theta | |
| EMITTED COLOR: | WHITE | | | | | |
| COLOR TEMPERATURE | | 4500 | 6300 | 10000 | K | |
| EPOXY LENS FINISH: | CLEAR | | | | | |

LIMITS OF SAFE OPERATION AT 25°C

| PARAMETER | MAX | UNITS |
|--------------------------|------------|-------|
| PEAK FORWARD CURRENT* | 1.0 | A |
| STEADY CURRENT | 700 | mA |
| POWER DISSIPATION | 7.5 | W |
| DERATE FROM 25°C | -1.2 | mW/°C |
| OPERATING, STORAGE TEMP. | -40 TO +80 | °C |

*T<10μS

CAUTION: MOISTURE SENSITIVE DEVICE
PER JEDEC LEVEL 3 STANDARDS

CAUTION: STATIC SENSITIVE DEVICE
FOLLOW PROPER E.S.D. HANDLING PROCEDURES
WHEN WORKING WITH THIS PART.



*UNLESS OTHERWISE SPECIFIED TOLERANCES PER DECIMAL PRECISION ARE: X=±1 (±0.039), X.X=±0.5 (±0.020), X.XX=±0.25 (±0.010), X.XXX=±0.127 (±0.005). LEAD SIZE=±0.05 (±0.002), LEAD LENGTH=±0.75 (±0.030). MIN.=^{+0.00}/_{-0.00} DECIMAL PRECISION MAX.=^{+0.00}/_{-0.00} DECIMAL PRECISION

| | | | | | |
|---|------------------|---|---|--|---|
| REV. | PART NUMBER | CONFIDENTIAL INFORMATION THE INFORMATION CONTAINED IN THIS DOCUMENT IS THE PROPERTY OF LUMEX INC. EXCEPT AS SPECIFICALLY AUTHORIZED IN WRITING BY LUMEX INC, THE HOLDER OF THIS DOCUMENT SHALL KEEP ALL INFORMATION CONTAINED HEREIN CONFIDENTIAL AND SHALL PROTECT SAME IN WHOLE OR IN PART FROM DISCLOSURE AND DISSEMINATION TO ALL THIRD PARTIES. | | | 290 E. HELEN ROAD PALATINE, IL 60067-6976 PHONE: +1.847.359.2790 US WEB: www.lumex.com TW WEB: www.lumex.com.tw |
| | SML-LX3939UWC-TR | RELIABILITY NOTE OUR MANY YEARS OF EXPERIENCE DATA ACCUMULATION INDICATE THAT SOLDER HEAT IS A MAJOR CAUSE OF EARLY AND FUTURE FAILURE. PLEASE PAY ATTENTION TO YOUR SOLDERING PROCESS. | DRAWN BY: JN CHECKED BY: APPROVED BY: DATE: 10.05.07 PAGE: 1 OF 2 SCALE: N/A | | |
| 10.10mm SQUARE 5 WATT HIGH POWER SMT LED, WHITE LED, WATER CLEAR LENS. | | | | | |