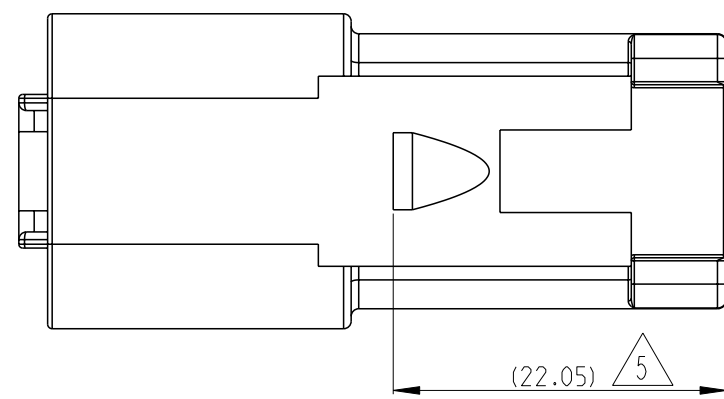
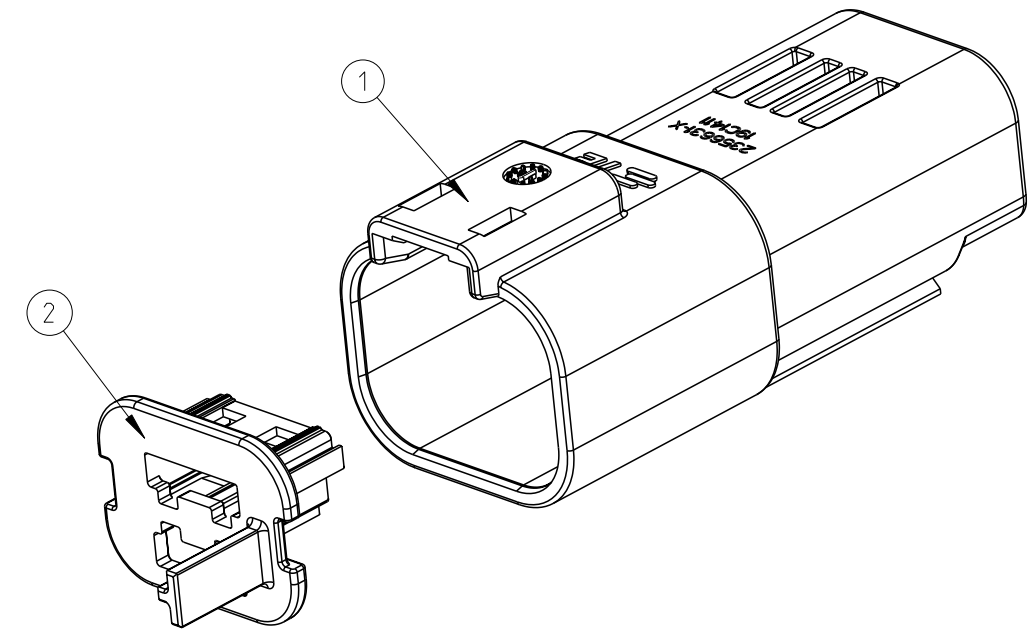
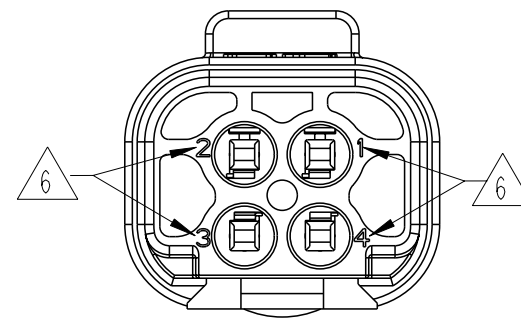
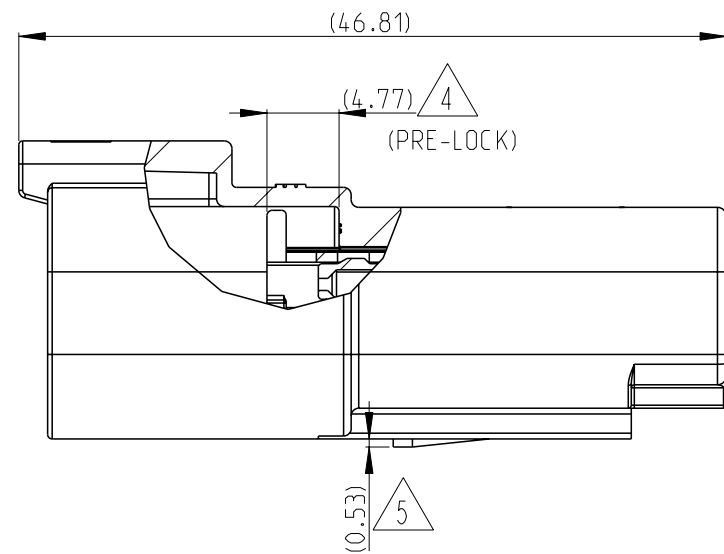
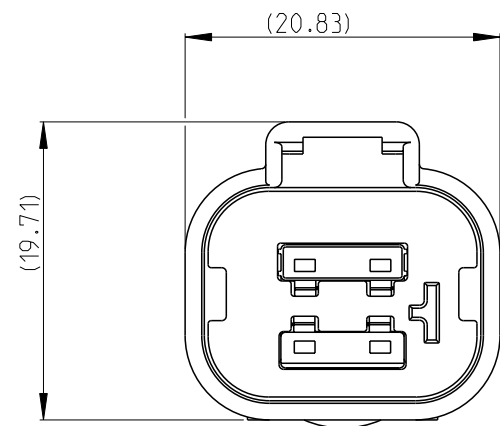
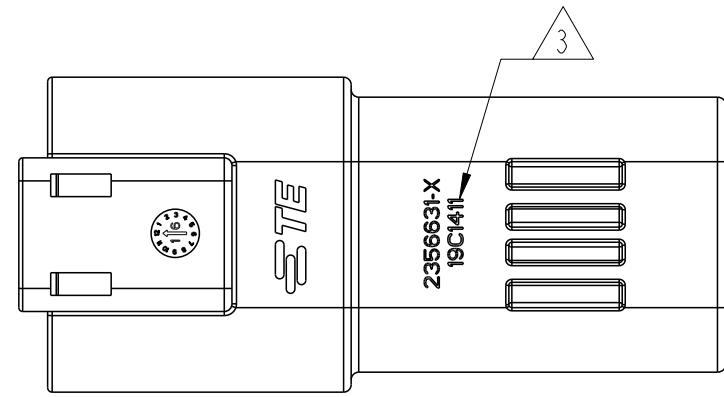
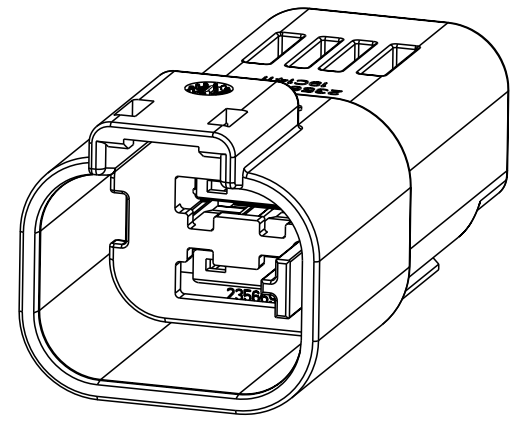


REVISIONS					
P	LTR	DESCRIPTION	DATE	DWN	APVD
A		INITIAL RELEASE	18SEP2019	V.T	I.Y
B		ECR-20-004362	30MAR2020	V.T	E.J
C		ECR-20-015258	01JUN2021	V.T	Z.Z



NOTES:

1. RECEPTACLE 2356631-X MATES WITH 2356607-X PLUG (X=1, 2, 3, 4 FOR RELEVANT CODE).
RECEPTACLE 2-2356631-X MATES WITH 2-2356607-X PLUG (X=1, 2, 3, 4 FOR RELEVANT CODE).

2. MATERIAL: HOUSING: PBT GF30, SEE TABLE FOR COLOR
TPA: PBT GF30, SEE TABLE FOR COLOR

3. DATE CODE: IDENTIFIES THE YEAR, MONTH, DAY AND HOUR OF ASSEMBLY.
YEAR: FIRST AND SECOND DIGITS(19=2019)
MONTH: THIRD DIGIT, EXCLUDING 1, A=JAN, B=FEB, C=MARCH...(K=OCTOBER)
DAY: FOURTH AND FIFTH DIGITS(14=14th DAY)
HOUR: SIXTH AND SEVENTH DIGITS(11=11AM)

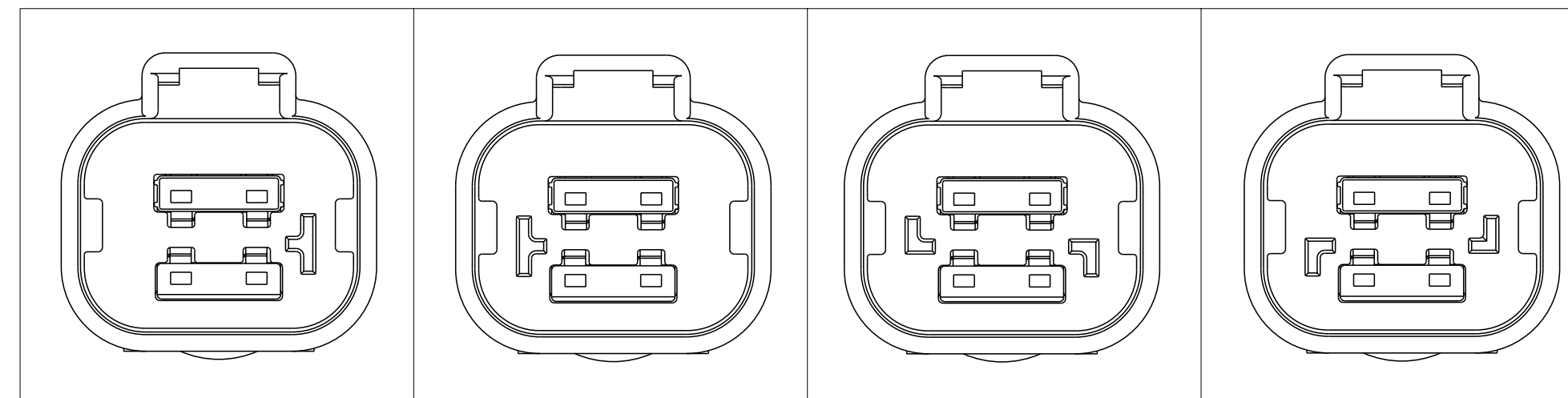
4. PULL TPA TO PRE-LOCK BEFORE TERMINAL INSERTION IN CASE OF TPA BEING HIT TO END-LOCK POSITION.

5. REFER TO DRAWING DT04-DOVETAIL FOR CLIP INTERFACE DIMENSIONS, RECOMMEND MOUNTING CLIP P/N LIST:.
PLASTIC VERSION PN:2355806-1.

6. WIRE NO

7. APPLICABLE TERMINAL PART NUMBERS AND WIRE SIZE:

2141114-1	TIN	GENERAL (USCAR-2 V2)	0.35	∅1.10-∅1.40	963142-2	963143-1
2141114-3	SILVER	HIGH VIBRATION (USCAR-2 V3)				
2141116-1	TIN	GENERAL (USCAR-2 V2)	0.5-0.75	∅1.40-∅1.90	963142-1	963143-1
2141116-3	SILVER	HIGH VIBRATION (USCAR-2 V3)				
2177610-1	TIN	GENERAL (USCAR-2 V2)	1.0-1.5	∅1.90-∅2.40	963142-1	963143-1
2177610-3	SILVER	HIGH VIBRATION (USCAR-2 V3)				
TERMINAL P/N	TERMINAL PLATING	APPLICATION	WIRE SIZE (MM2)	INSULATION WIRES(MM)	SWS P/N	BLIND PLUG P/N



CODING A	CODING B	CODING C	CODING D
PN:2356631-1 (V0) 2-2356631-1 (HB)	PN:2356631-2 (V0) 2-2356631-2 (HB)	PN:2356631-3 (V0) 2-2356631-3 (HB)	PN:2356631-4 (V0) 2-2356631-4 (HB)

1		1		1		1		COLOR	MATERIAL	DESCRIPTION	ITEM NO
	1				1			BLUE	PBT-GF30	TPA, CODE D	2
		1				1		NATURAL	PBT-GF30	TPA, CODE C	
			1				1	GREEN	PBT-GF30	TPA, CODE B	
				1				YELLOW	PBT-GF30	TPA, CODE A	1
1	1	1	1					GRAY	PBT-GF30	HOUSING	
					1	1	1	1	BLACK	PBT-GF30	
QTY. REQUEST PER ASSY											
9.4	9.4	9.4	9.4	10.1	10.1	10.1	10.1	WEIGHT OF EACH ASSY NO. (g)			
C	C	C	C	C	C	C	C	REVISION OF EACH ASSY NO.			
2-2356631-4 (HB)	2-2356631-3 (HB)	2-2356631-2 (HB)	2-2356631-1 (HB)	2356631-4 (V0)	2356631-3 (V0)	2356631-2 (V0)	2356631-1 (V0)	TE ASSEMBLY PN			

THIS DRAWING IS A CONTROLLED DOCUMENT.

DIMENSIONS:	TOLERANCES UNLESS OTHERWISE SPECIFIED:
mm	
0 PLC	±
1 PLC	±0.25
2 PLC	±0.15
3 PLC	±
4 PLC	±
ANGLES	±
FINISH	

DWN	V. TANG	18SEP2019
CHK	E. JIANG	18SEP2019
APVD	L. YIN	18SEP2019
PRODUCT SPEC		108-32189
APPLICATION SPEC		114-32258
WEIGHT		-
CUSTOMER DRAWING		

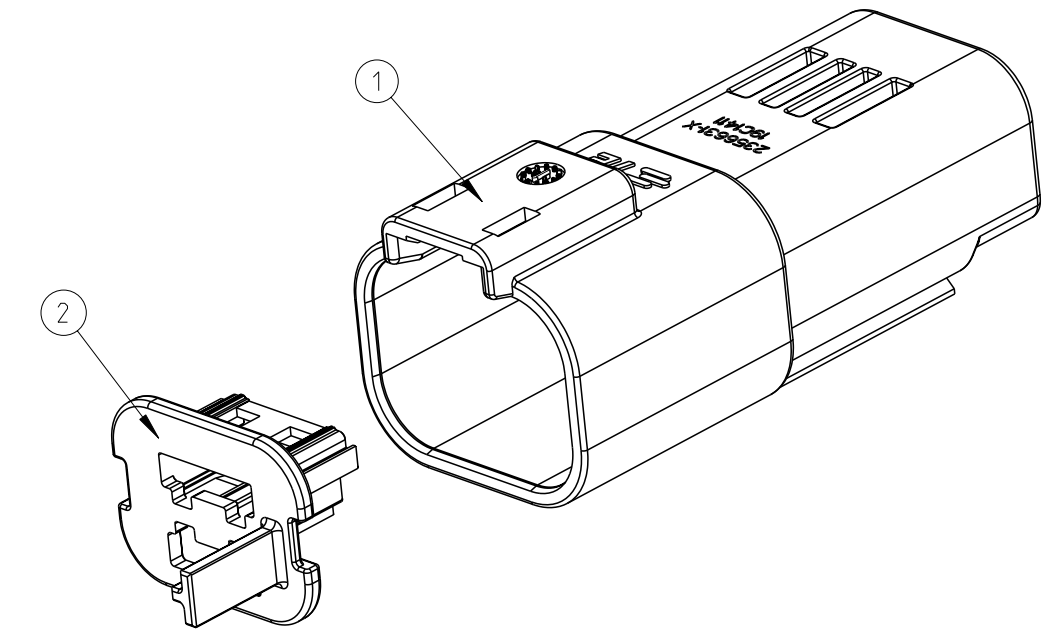
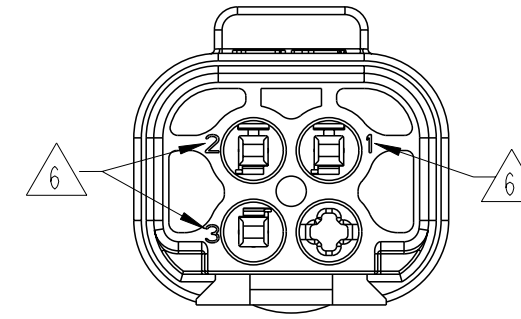
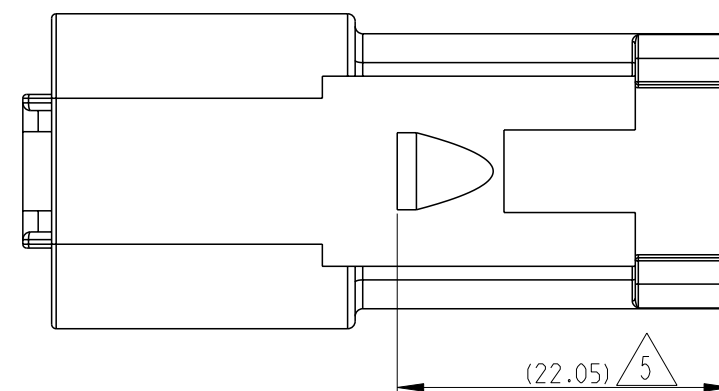
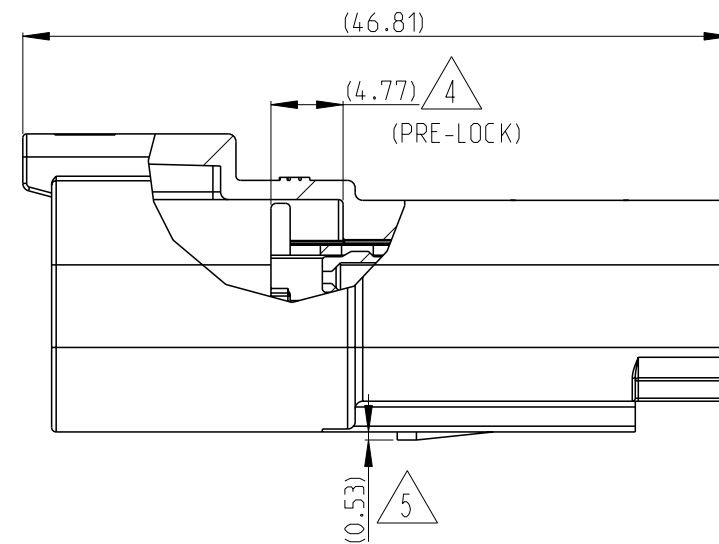
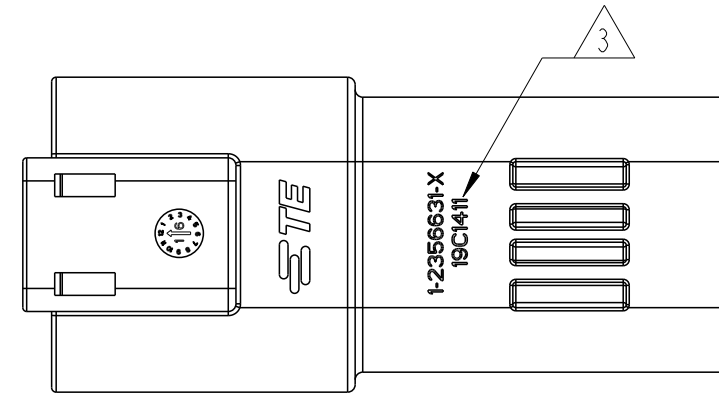
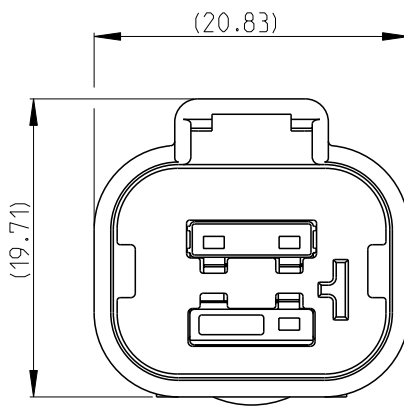
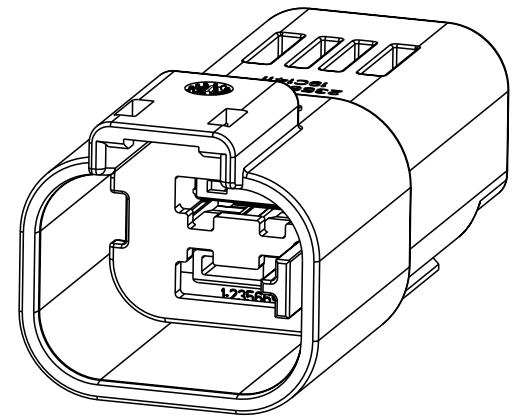
STE TE Connectivity

NAME SUPERSEAL PRO 4POS.RECP. ASSEMBLY
MCON1.2,CB TEMINAL

SIZE	CAGE CODE	DRAWING NO	RESTRICTED TO
A2	00779	C-2356631	

SCALE 2:1 SHEET 1 OF 2 REV C

P	LTR	DESCRIPTION	DATE	DWN	APVD
-		SEE SHEET 1	-	-	-



NOTES:

1. RECEPTACLE 1-2356631-X MATES WITH 1-2356607-X PLUG (X=1, 2, 3, 4 FOR RELEVANT CODE).
RECEPTACLE 3-2356631-X MATES WITH 3-2356607-X PLUG (X=1, 2, 3, 4 FOR RELEVANT CODE).

2. MATERIAL: HOUSING: PBT GF30, SEE TABLE FOR COLOR
TPA: PBT GF30, SEE TABLE FOR COLOR

3. DATE CODE: IDENTIFIES THE YEAR, MONTH, DAY AND HOUR OF ASSEMBLY.
YEAR: FIRST AND SECOND DIGITS(19=2019)
MONTH: THIRD DIGIT, EXCLUDING 1, A=JAN, B=FEB, C=MARCH...(K=OCTOBER)
DAY: FOURTH AND FIFTH DIGITS(14=14th DAY)
HOUR: SIXTH AND SEVENTH DIGITS(11=11AM)

4. PULL TPA TO PRE-LOCK BEFORE TERMINAL INSERTION IN CASE OF TPA BEING HIT TO END-LOCK POSITION.

5. REFER TO DRAWING DT04-DOVETAIL FOR CLIP INTERFACE DIMENSIONS, RECOMMEND MOUNTING CLIP PN LIST:
PLASTIC VERSION PN:2355806-1.

6. WIRE NO

7. APPLICABLE TERMINAL PART NUMBERS AND WIRE SIZE:

TERMINAL PN	TERMINAL PLATING	APPLICATION	WIRE SIZE (MM2)	INSULATION WIRES(MM)	SWS P/N	BLIND PLUG P/N
2141114-1	TIN	GENERAL (USCAR-2 V2)	0.35	Ø1.10-Ø1.40	963142-2	963143-1
2141114-3	SILVER	HIGH VIBRATION (USCAR-2 V3)				
2141116-1	TIN	GENERAL (USCAR-2 V2)	0.5-0.75	Ø1.40-Ø1.90	963142-1	963143-1
2141116-3	SILVER	HIGH VIBRATION (USCAR-2 V3)				
2177610-1	TIN	GENERAL (USCAR-2 V2)	1.0-1.5	Ø1.90-Ø2.40	963142-1	963143-1
2177610-3	SILVER	HIGH VIBRATION (USCAR-2 V3)				

CODING A PN:1-2356631-1 (V0) 3-2356631-1 (HB)		CODING B PN:1-2356631-2 (V0) 3-2356631-2 (HB)		CODING C PN:1-2356631-3 (V0) 3-2356631-3 (HB)		CODING D PN:1-2356631-4 (V0) 3-2356631-4 (HB)	
1		1				BLUE	PBT-GF30
	1		1			NATURAL	PBT-GF30
		1		1		GREEN	PBT-GF30
			1		1	YELLOW	PBT-GF30
1	1	1	1			GRAY	PBT-GF30
			1	1	1	BLACK	PBT-GF30

1	2	3	4	5	6	7	8	COLOR	MATERIAL	DESCRIPTION	ITEM NO
										TPA, CODE D	2
										TPA, CODE C	
										TPA, CODE B	
				1						TPA, CODE A	1
										HOUSING	
QTY. REQUEST PER ASSY											
9.6	9.6	9.5	9.5	10.3	10.3	10.2	10.2			WEIGHT OF EACH ASSY NO. (g)	
C	C	C	C	C	C	C	C			REVISION OF EACH ASSY NO.	
3-2356631-4 (HB)	3-2356631-3 (HB)	3-2356631-2 (HB)	3-2356631-1 (HB)	1-2356631-4 (V0)	1-2356631-3 (V0)	1-2356631-2 (V0)	1-2356631-1 (V0)			TE ASSEMBLY PN	

THIS DRAWING IS A CONTROLLED DOCUMENT.

DIMENSIONS:	TOLERANCES UNLESS OTHERWISE SPECIFIED:
mm	
	0 PLC ±
	1 PLC ±0.25
	2 PLC ±0.15
	3 PLC ±
	4 PLC ±
MATERIAL	ANGLES ±
-	FINISH ±
-	-

DWN	V. TANG	18SEP2019
CHK	E. JIANG	18SEP2019
APVD	J. YIN	18SEP2019
PRODUCT SPEC	108-32189	
APPLICATION SPEC	114-32258	
WEIGHT	-	
CUSTOMER DRAWING		

STE TE Connectivity

NAME: SUPERSEAL PRO 3POS.RECP. ASSEMBLY MCON1.2,CB TEMINAL

SIZE: A2 CAGE CODE: 00779 DRAWING NO: C-2356631 RESTRICTED TO: C

SCALE: 2:1 SHEET: 2 OF 2 REV: C