

## Molded transformer terminal block - VTRK 4 WH - 3004980

Please be informed that the data shown in this PDF Document is generated from our Online Catalog. Please find the complete data in the user's documentation. Our General Terms of Use for Downloads are valid (<http://phoenixcontact.com/download>)



Molded transformer terminal block, Connection method: Screw connection, Length: 23.4 mm, Width: 12.4 mm, Height: 17.2 mm, Color: white



### Key commercial data

|                                      |          |
|--------------------------------------|----------|
| Packing unit                         | 1 pc     |
| Weight per Piece (excluding packing) | 7.43 GRM |
| Custom tariff number                 | 85369010 |
| Country of origin                    | Poland   |

### Technical data

#### General

|   |  |
|---|--|
| Number of connections                   | 4  |
| Color                                   | white  |
| Insulating material                     | PA   |
| Inflammability class according to UL 94 | V0   |
| Rated surge voltage                     | 4 kV   |
| Rated insulation voltage                | 250 V  |
| Pollution degree                        | 3  |
| Surge voltage category                  | III  |
| Nominal current $I_N$                   | 25 A   |
| Nominal voltage $U_N$                   | voltage data only possible in conjunction with transformer |
| Number of positions                     | 2  |

#### Dimensions

|        |         |
|--------|---------|
| Width  | 12.4 mm |
| Length | 23.4 mm |
| Height | 17.2 mm |

## Molded transformer terminal block - VTRK 4 WH - 3004980

### Technical data

#### Connection data

|   |                      |
|---|----------------------|
| Conductor cross section solid min.  | 0.2 mm <sup>2</sup>  |
| Conductor cross section solid max.  | 6 mm <sup>2</sup>    |
| Conductor cross section stranded min.   | 0.2 mm <sup>2</sup>  |
| Conductor cross section stranded max.   | 4 mm <sup>2</sup>    |
| Conductor cross section AWG/kcmil min.  | 24                   |
| Conductor cross section AWG/kcmil max   | 10                   |
| Conductor cross section stranded, with ferrule without plastic sleeve min.              | 0.25 mm <sup>2</sup> |
| Conductor cross section stranded, with ferrule without plastic sleeve max.              | 4 mm <sup>2</sup>    |
| Conductor cross section stranded, with ferrule with plastic sleeve min.                 | 0.25 mm <sup>2</sup> |
| Conductor cross section stranded, with ferrule with plastic sleeve max.                 | 2.5 mm <sup>2</sup>  |
| 2 conductors with same cross section, solid min.  | 0.2 mm <sup>2</sup>  |
| 2 conductors with same cross section, solid max.  | 1.5 mm <sup>2</sup>  |
| 2 conductors with same cross section, stranded min.                                     | 0.2 mm <sup>2</sup>  |
| 2 conductors with same cross section, stranded max.                                     | 1.5 mm <sup>2</sup>  |
| 2 conductors with same cross section, stranded, ferrules without plastic sleeve, min.   | 0.25 mm <sup>2</sup> |
| 2 conductors with same cross section, stranded, ferrules without plastic sleeve, max.   | 1.5 mm <sup>2</sup>  |
| 2 conductors with same cross section, stranded, TWIN ferrules with plastic sleeve, min. | 0.5 mm <sup>2</sup>  |
| 2 conductors with same cross section, stranded, TWIN ferrules with plastic sleeve, max. | 2.5 mm <sup>2</sup>  |
| Connection method   | Screw connection     |
| Stripping length  | 8 mm                 |
| Internal cylindrical gage   | A4                   |
| Screw thread  | M3                   |
| Tightening torque, min  | 0.6 Nm               |
| Tightening torque max   | 0.8 Nm               |

### Classifications

#### eCl@ss

|            |          |
|------------|----------|
| eCl@ss 4.0 | 27141110 |
| eCl@ss 4.1 | 27141110 |
| eCl@ss 5.0 | 27141110 |
| eCl@ss 5.1 | 27141110 |
| eCl@ss 6.0 | 27141110 |
| eCl@ss 7.0 | 27141110 |

# Molded transformer terminal block - VTRK 4 WH - 3004980

## Classifications

### eCl@ss

|            |          |
|------------|----------|
| eCl@ss 8.0 | 27141190 |
|------------|----------|

### ETIM

|          |          |
|----------|----------|
| ETIM 2.0 | EC001283 |
| ETIM 3.0 | EC001283 |
| ETIM 4.0 | EC000398 |
| ETIM 5.0 | EC000398 |

### UNSPSC

|               |          |
|---------------|----------|
| UNSPSC 6.01   | 30211811 |
| UNSPSC 7.0901 | 39121410 |
| UNSPSC 11     | 39121410 |
| UNSPSC 12.01  | 39121410 |
| UNSPSC 13.2   | 39121410 |

## Approvals

### Approvals


#### Approvals

CSA / UL Recognized / cUL Recognized / GOST / GOST / cULus Recognized

#### Ex Approvals

#### Approvals submitted

## Approval details

|   |                                |       |       |
|---|--------------------------------|-------|-------|
| CSA  |                                | B     | D     |
|   | mm <sup>2</sup> /AWG/kcmil     | 24-10 | 24-10 |
|   | Nominal current I <sub>N</sub> | 35 A  | 10 A  |
|   | Nominal voltage U <sub>N</sub> | 150 V | 300 V |
|   |                                |       |       |

# Molded transformer terminal block - VTRK 4 WH - 3004980

## Approvals

|                                |       |       |
|--------------------------------|-------|-------|
| UL Recognized                  |       |       |
|                                | B     | C     |
| mm <sup>2</sup> /AWG/kcmil     | 30-10 | 30-10 |
| Nominal current I <sub>N</sub> | 30 A  | 30 A  |
| Nominal voltage U <sub>N</sub> | 300 V | 300 V |

|                                |       |       |
|--------------------------------|-------|-------|
| cUL Recognized                 |       |       |
|                                | B     | C     |
| mm <sup>2</sup> /AWG/kcmil     | 30-10 | 30-10 |
| Nominal current I <sub>N</sub> | 30 A  | 30 A  |
| Nominal voltage U <sub>N</sub> | 300 V | 300 V |

|      |  |  |
|------|--|--|
| GOST |  |  |
|------|--|--|

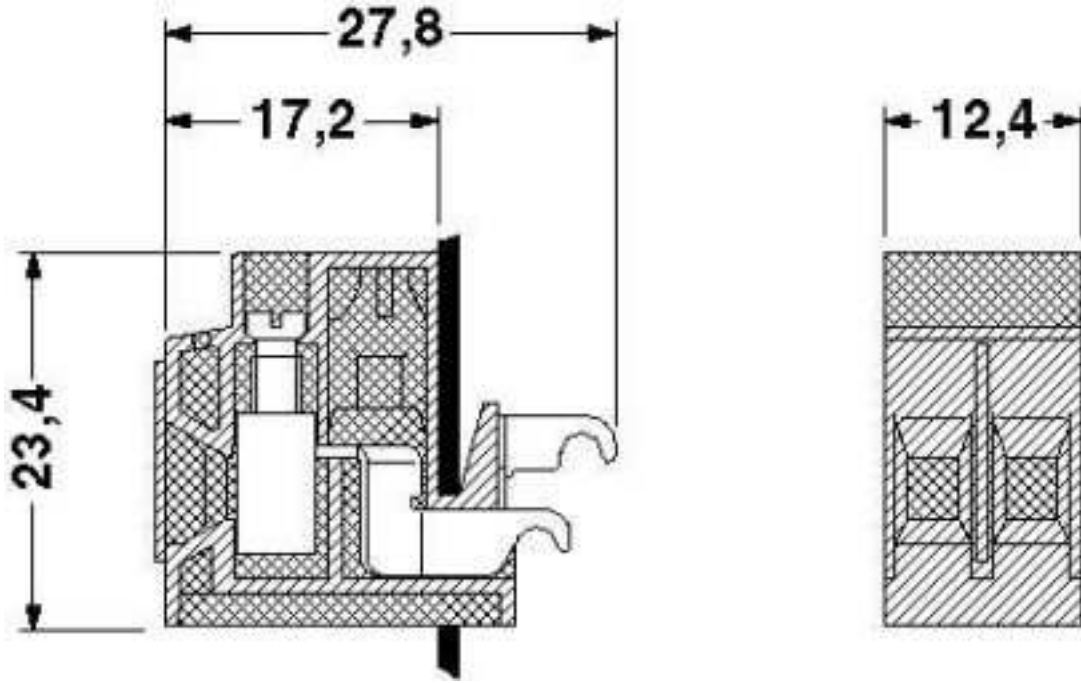
|      |  |  |
|------|--|--|
| GOST |  |  |
|------|--|--|

|                  |  |  |
|------------------|--|--|
| cULus Recognized |  |  |
|------------------|--|--|

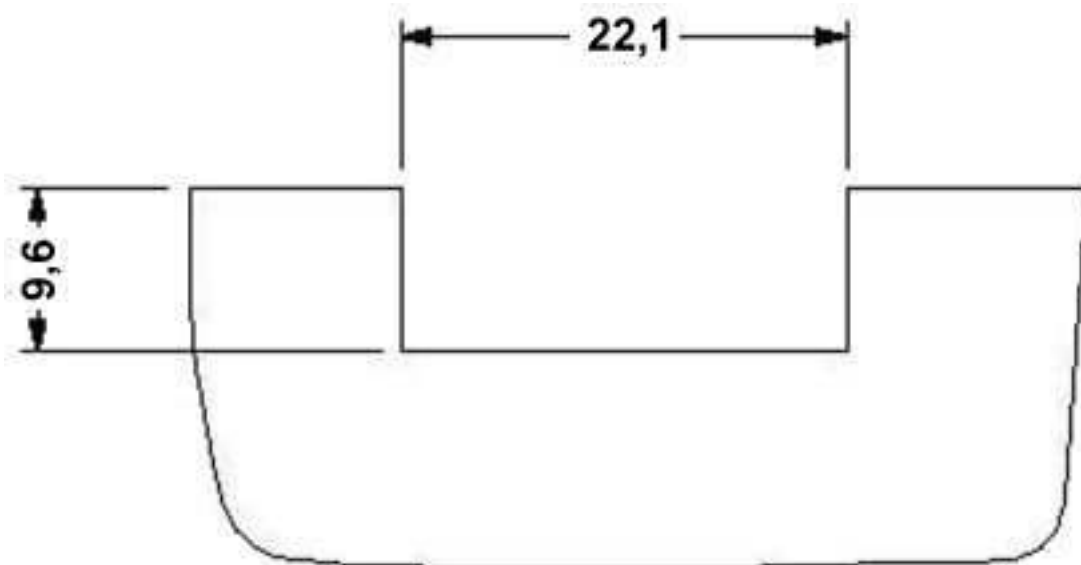
## Drawings

# Molded transformer terminal block - VTRK 4 WH - 3004980

Dimensioned drawing



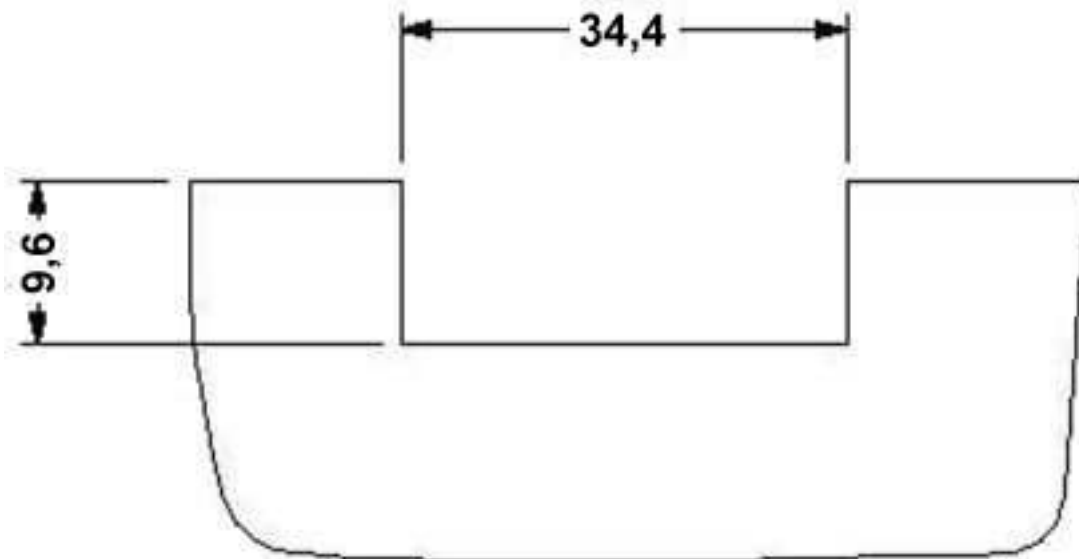
Dimensioned drawing



Housing cutout (panel thickness 1.8) for two transformer terminal blocks

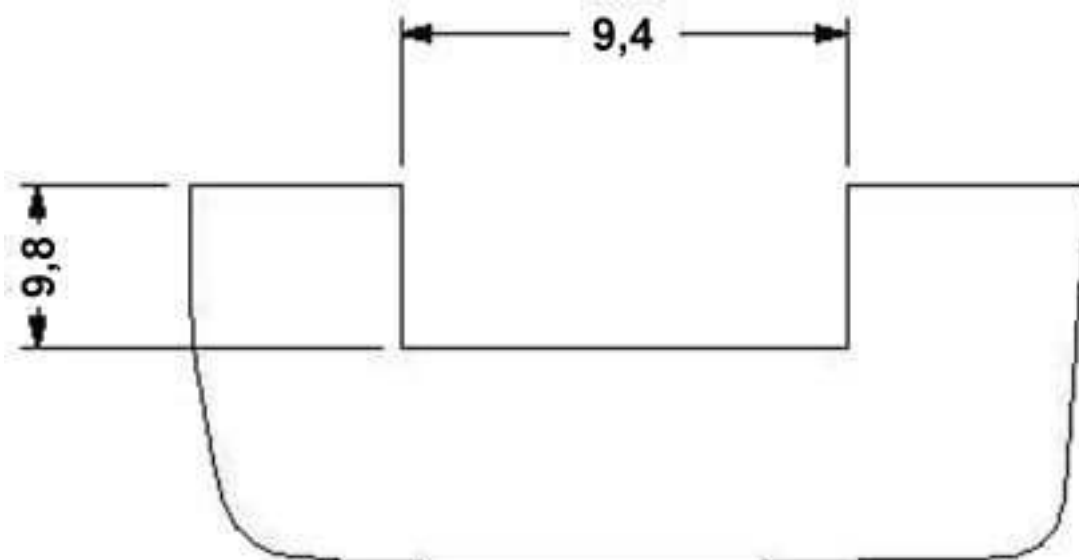
## Molded transformer terminal block - VTRK 4 WH - 3004980

Dimensioned drawing



Housing cutout (panel thickness 1.8) for three transformer terminal blocks

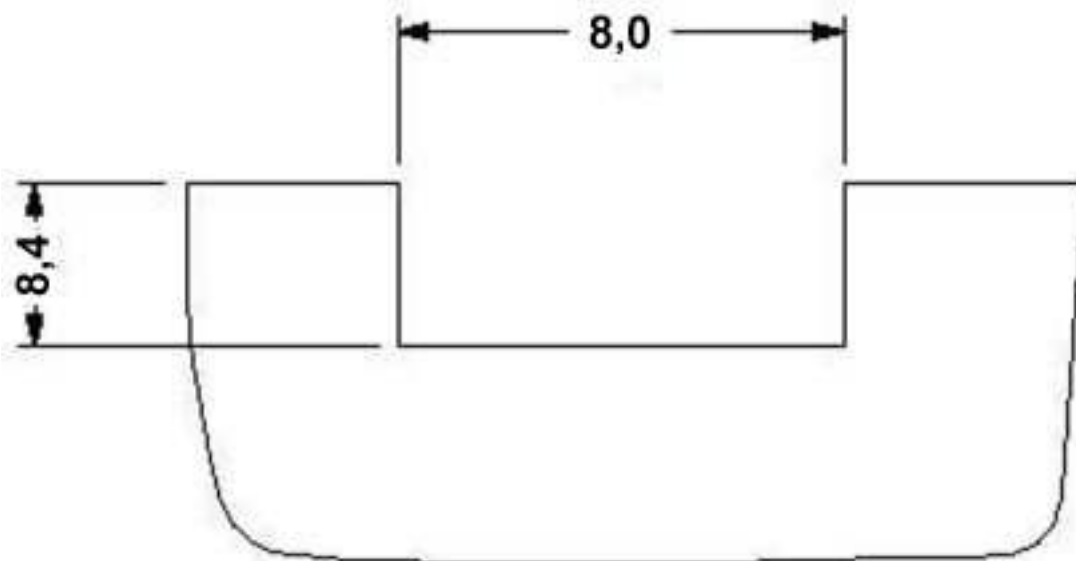
Dimensioned drawing



Housing cutout (panel thickness 1.9) for one transformer terminal block

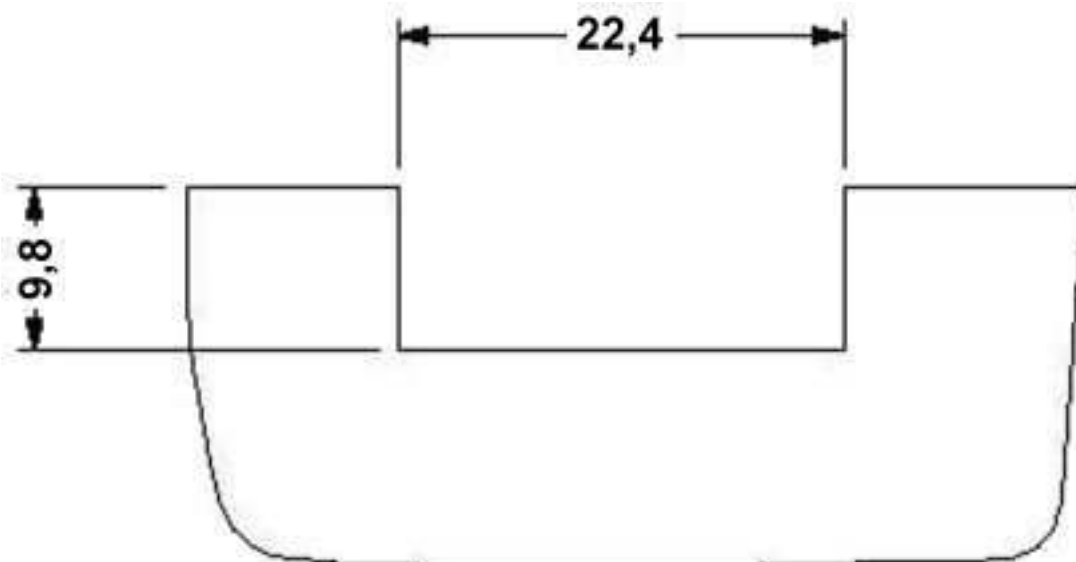
## Molded transformer terminal block - VTRK 4 WH - 3004980

Dimensioned drawing



Housing cutout (panel thickness 1.2) for one transformer terminal block

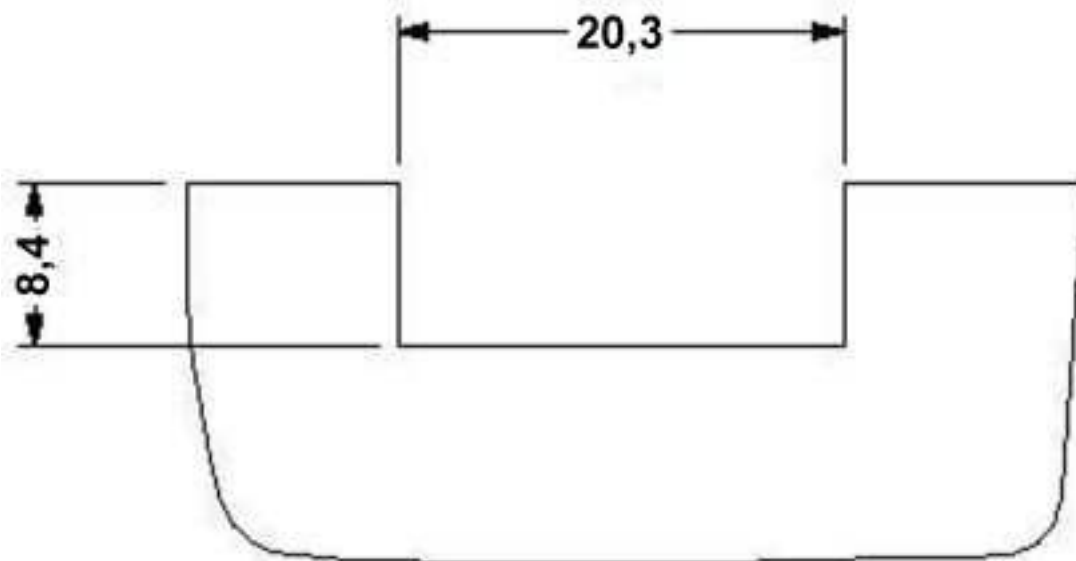
Dimensioned drawing



Housing cutout (panel thickness 1.9) for two transformer terminal blocks

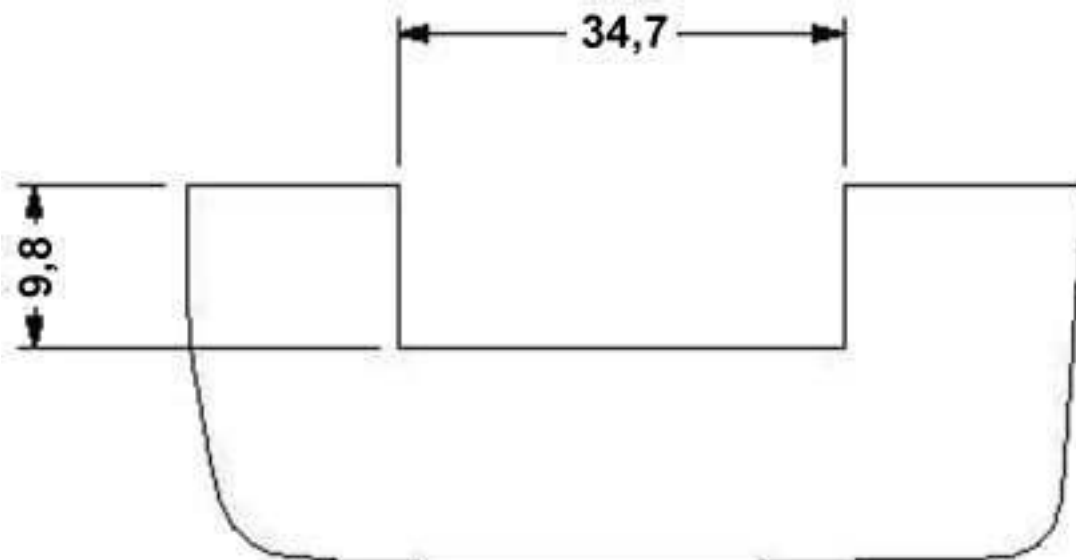
## Molded transformer terminal block - VTRK 4 WH - 3004980

Dimensioned drawing



Housing cutout (panel thickness 1.2) for two transformer terminal blocks

Dimensioned drawing

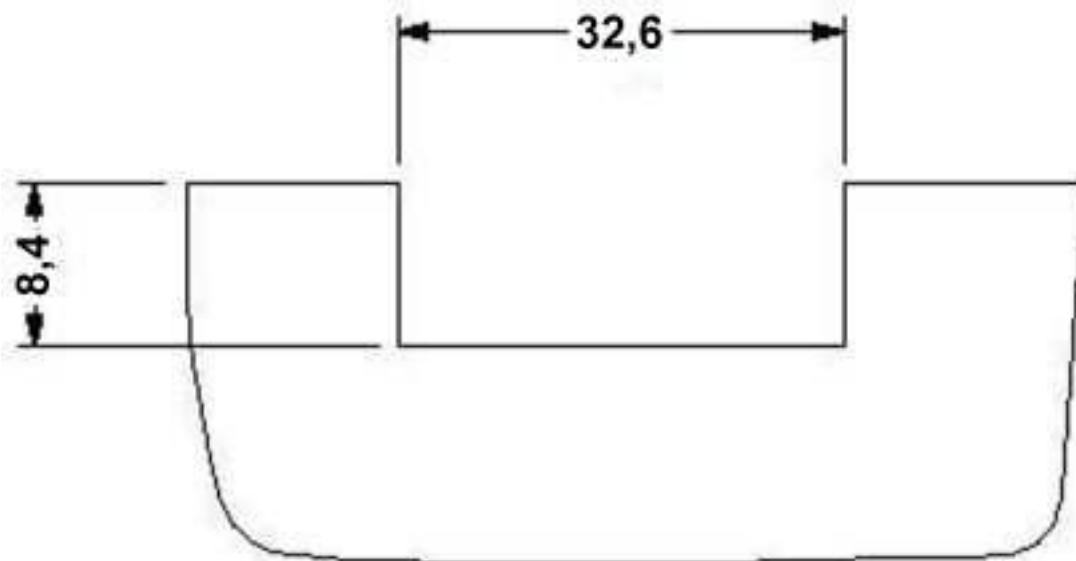


Housing cutout (panel thickness 1.9) for three transformer terminal blocks



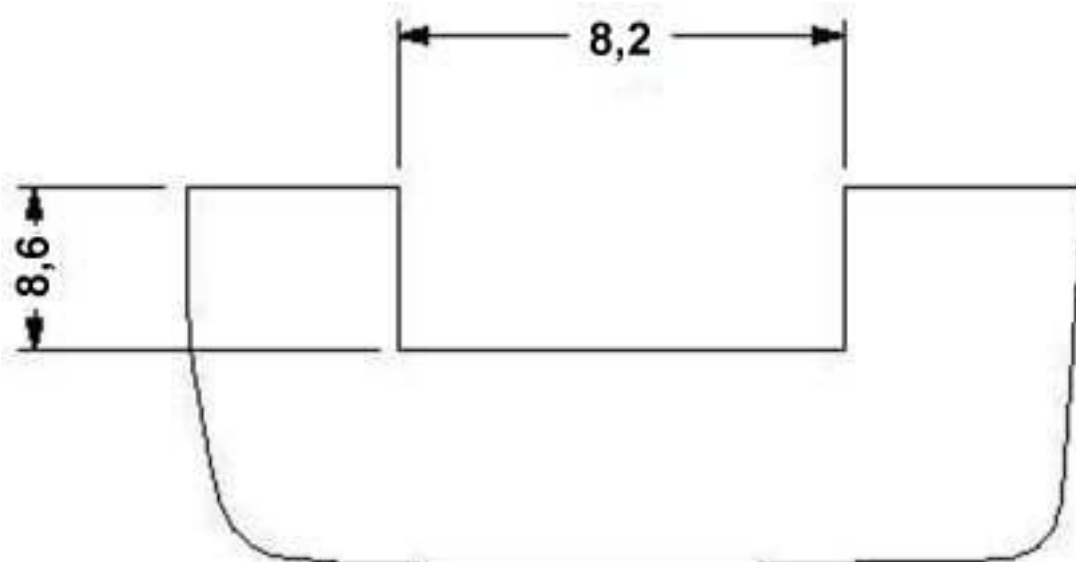
## Molded transformer terminal block - VTRK 4 WH - 3004980

Dimensioned drawing



Housing cutout (panel thickness 1.2) for three transformer terminal blocks

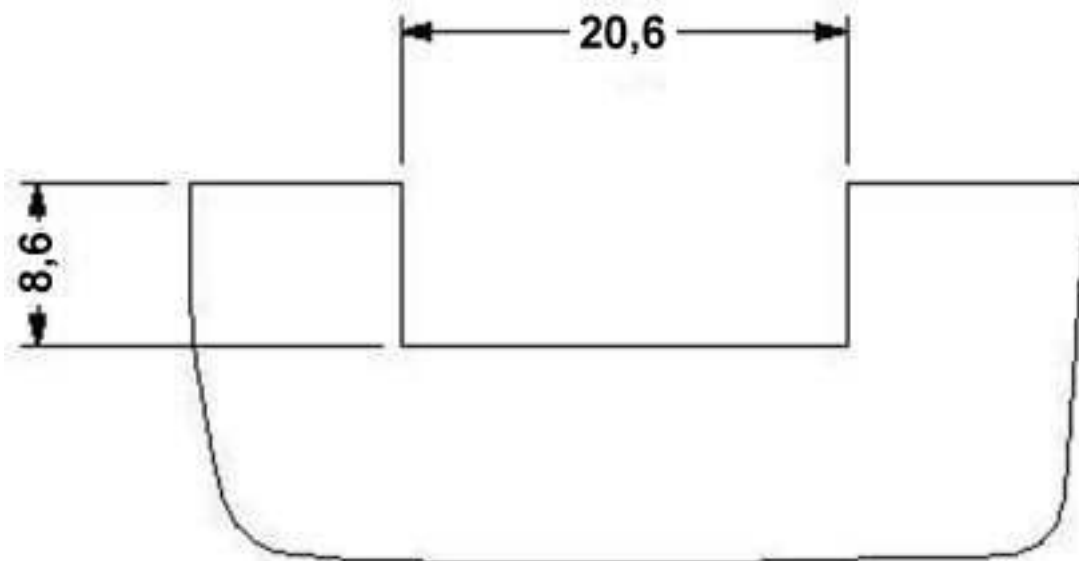
Dimensioned drawing



Housing cutout (panel thickness 1.3) for one transformer terminal block

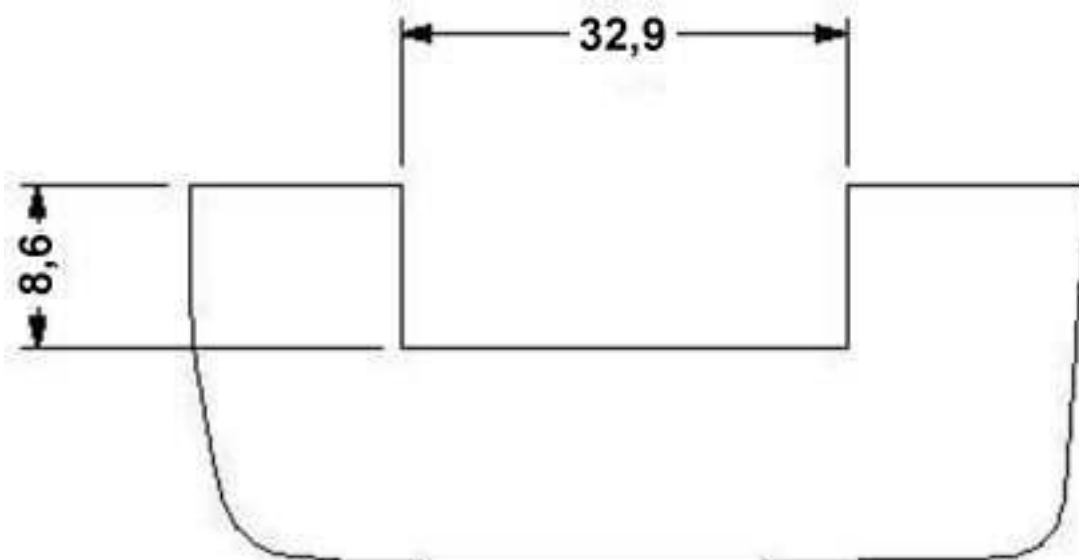
## Molded transformer terminal block - VTRK 4 WH - 3004980

Dimensioned drawing



Housing cutout (panel thickness 1.3) for two transformer terminal blocks

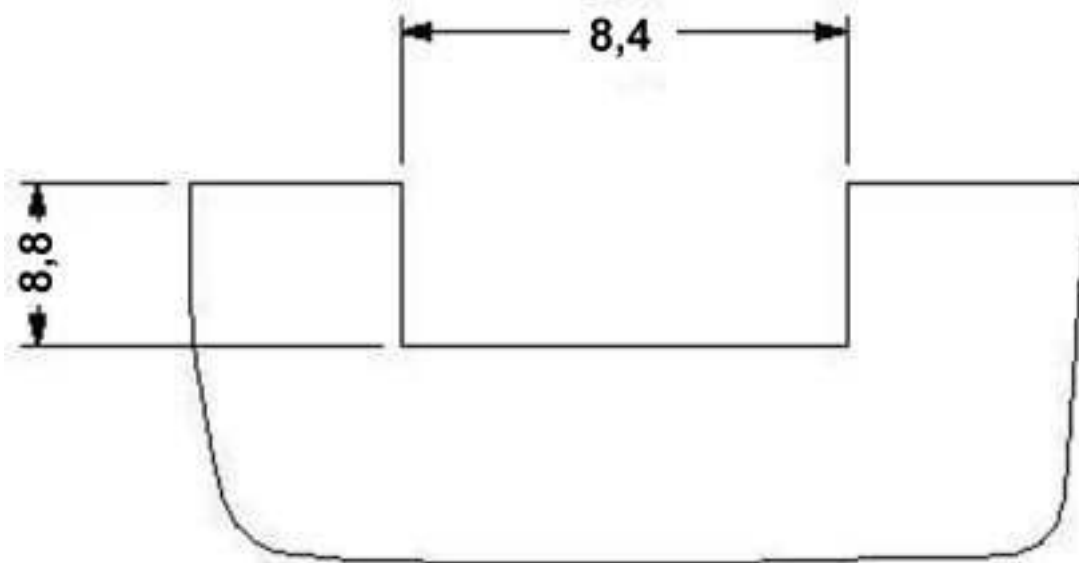
Dimensioned drawing



Housing cutout (panel thickness 1.3) for three transformer terminal blocks

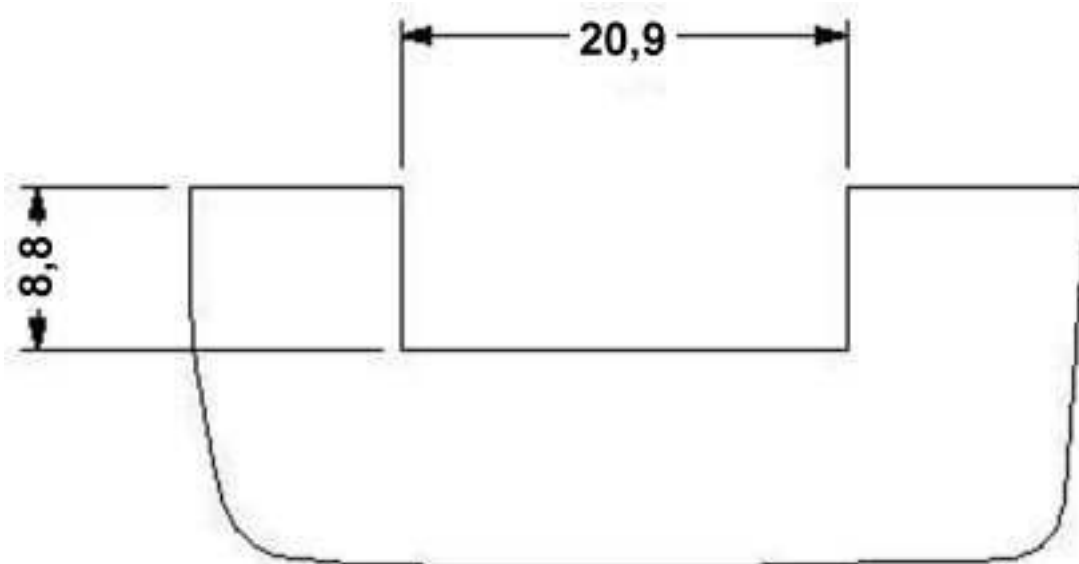
## Molded transformer terminal block - VTRK 4 WH - 3004980

Dimensioned drawing



Housing cutout (panel thickness 1.4) for one transformer terminal block

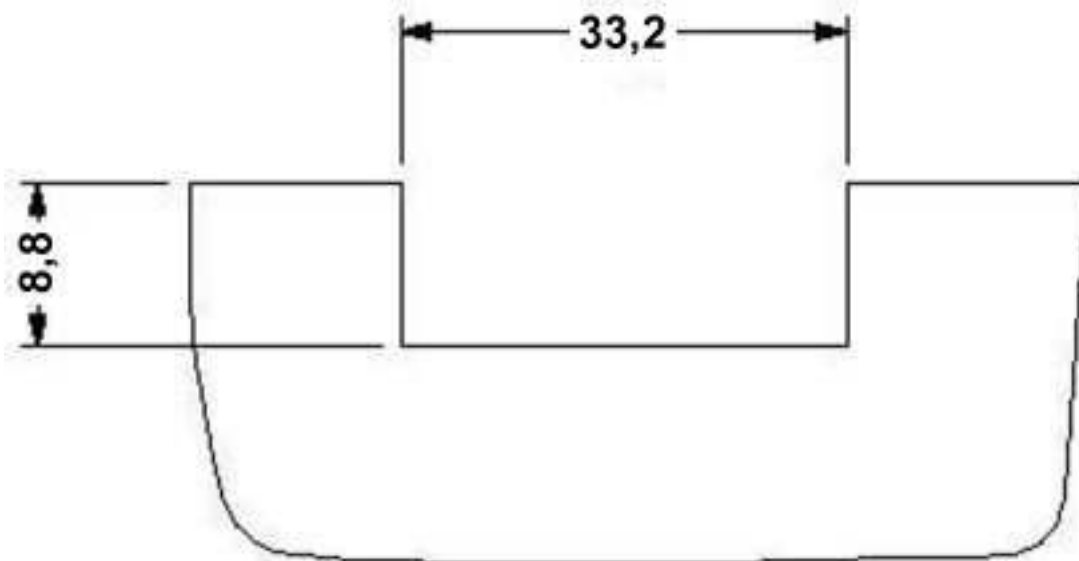
Dimensioned drawing



Housing cutout (panel thickness 1.4) for two transformer terminal blocks

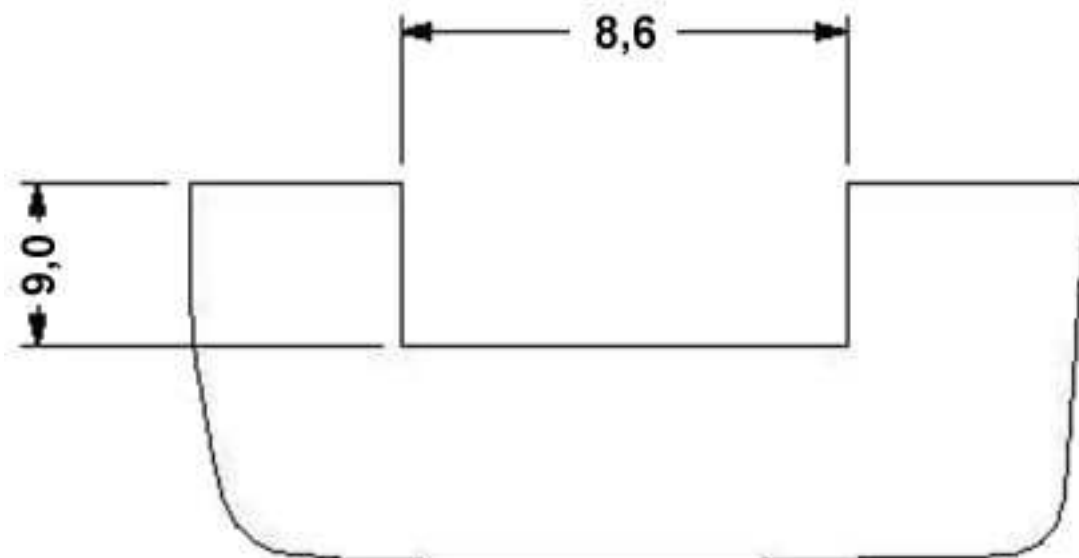
## Molded transformer terminal block - VTRK 4 WH - 3004980

Dimensioned drawing



Housing cutout (panel thickness 1.4) for three transformer terminal blocks

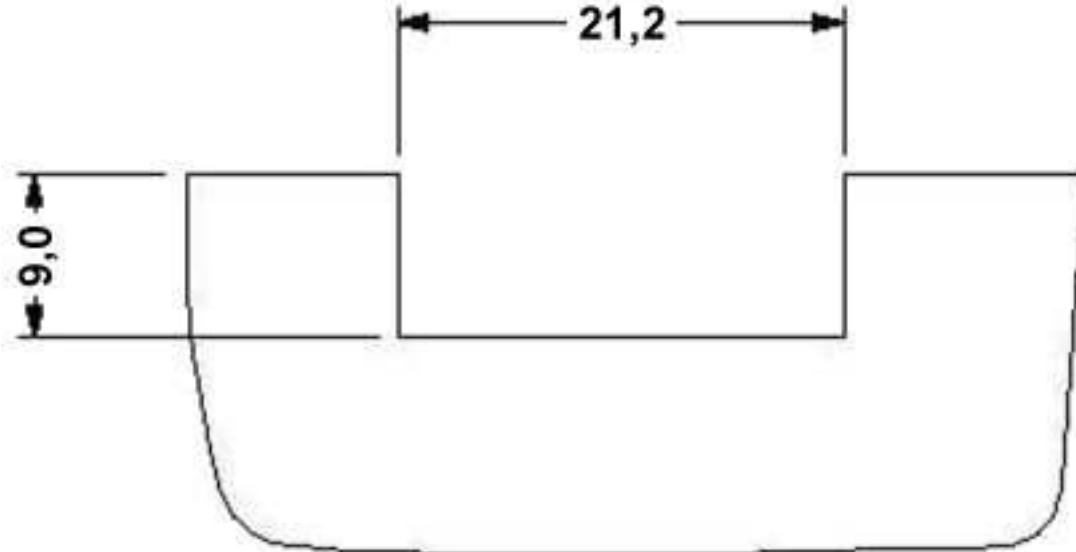
Dimensioned drawing



Housing cutout (panel thickness 1.5) for one transformer terminal block

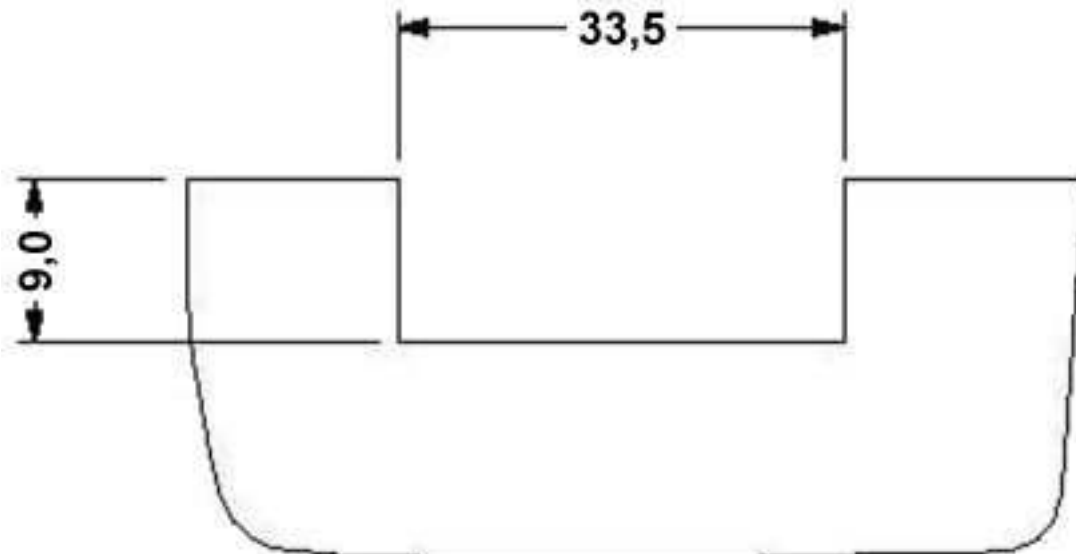
## Molded transformer terminal block - VTRK 4 WH - 3004980

Dimensioned drawing



Housing cutout (panel thickness 1.5) for two transformer terminal blocks

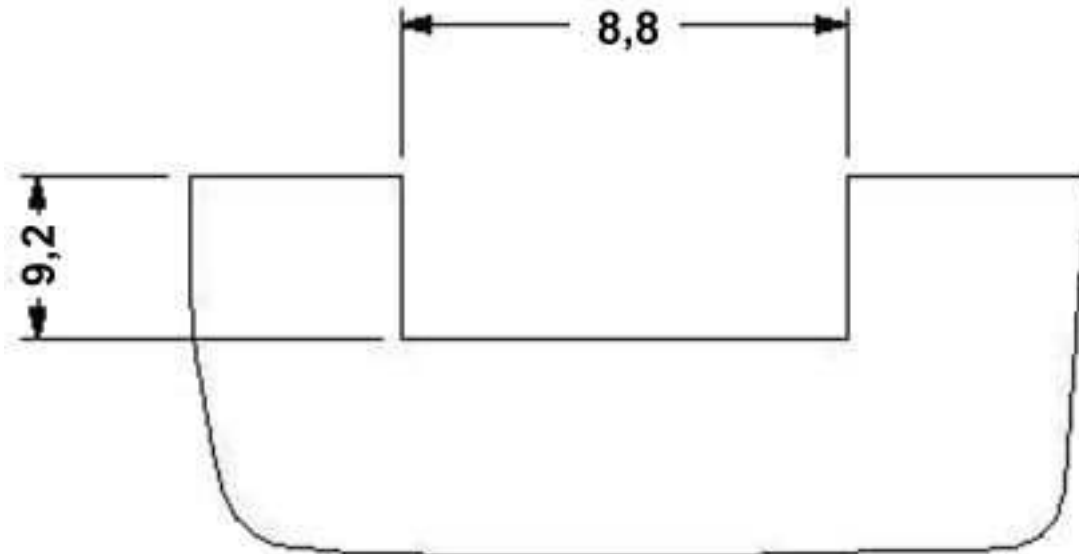
Dimensioned drawing



Housing cutout (panel thickness 1.5) for three transformer terminal blocks

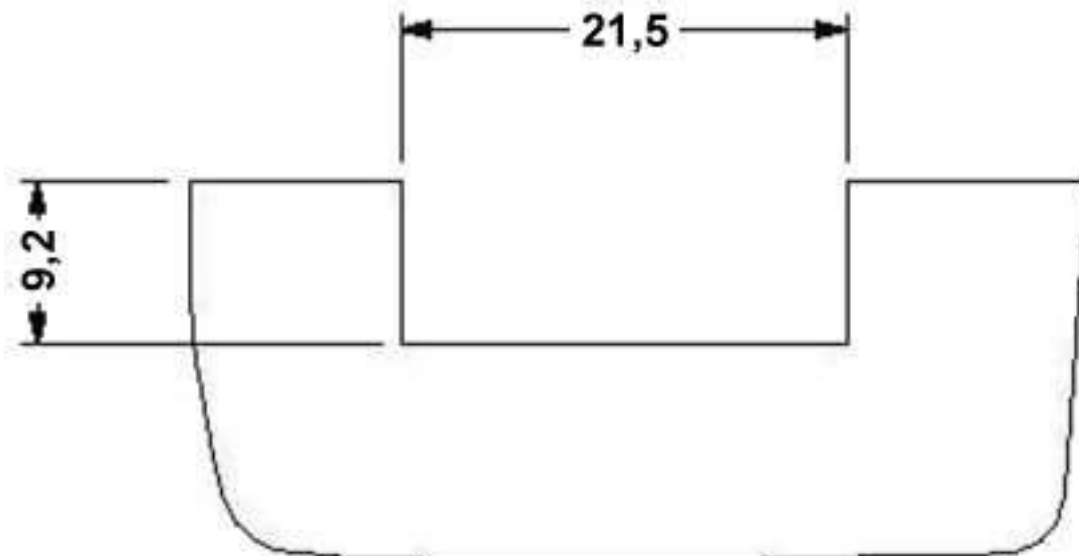
## Molded transformer terminal block - VTRK 4 WH - 3004980

Dimensioned drawing



Housing cutout (panel thickness 1.6) for one transformer terminal block

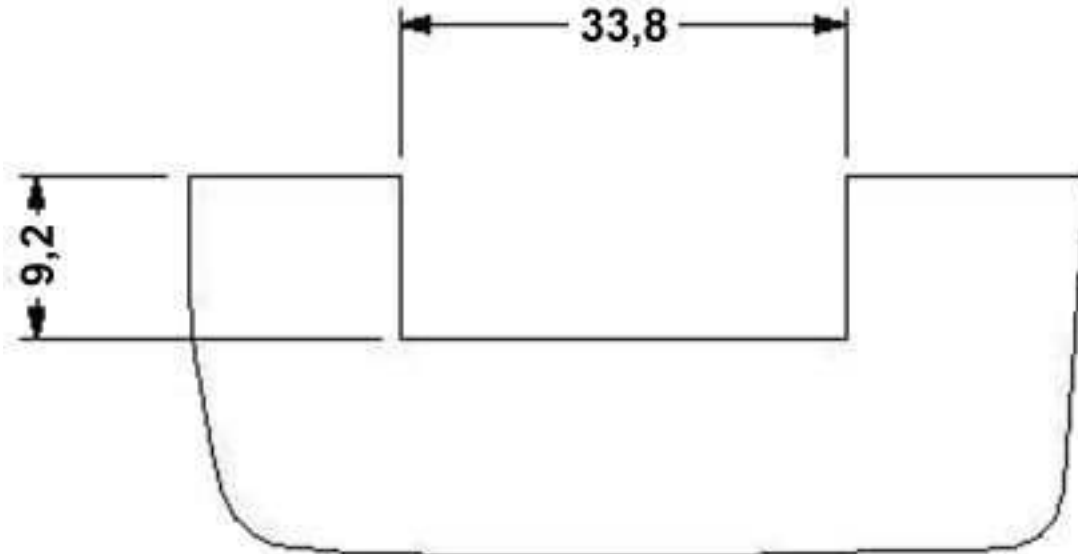
Dimensioned drawing



Housing cutout (panel thickness 1.6) for two transformer terminal blocks

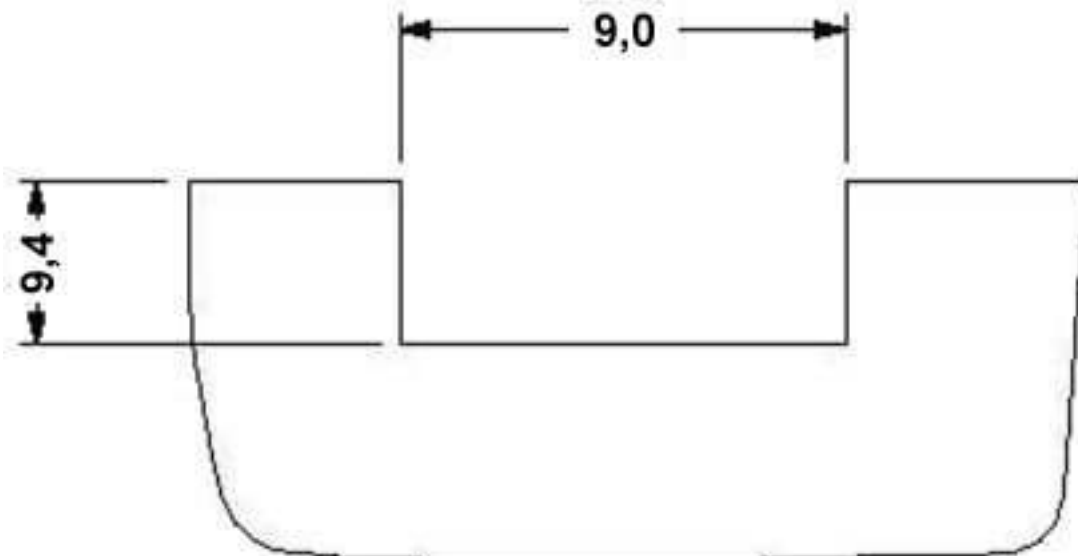
## Molded transformer terminal block - VTRK 4 WH - 3004980

Dimensioned drawing



Housing cutout (panel thickness 1.6) for three transformer terminal blocks

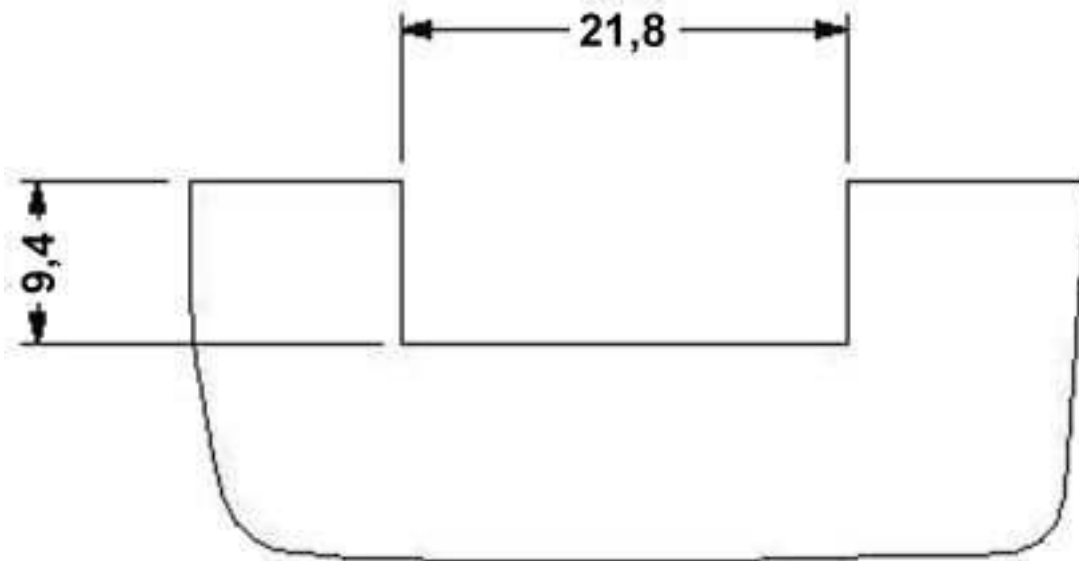
Dimensioned drawing



Housing cutout (panel thickness 1.7) for one transformer terminal block

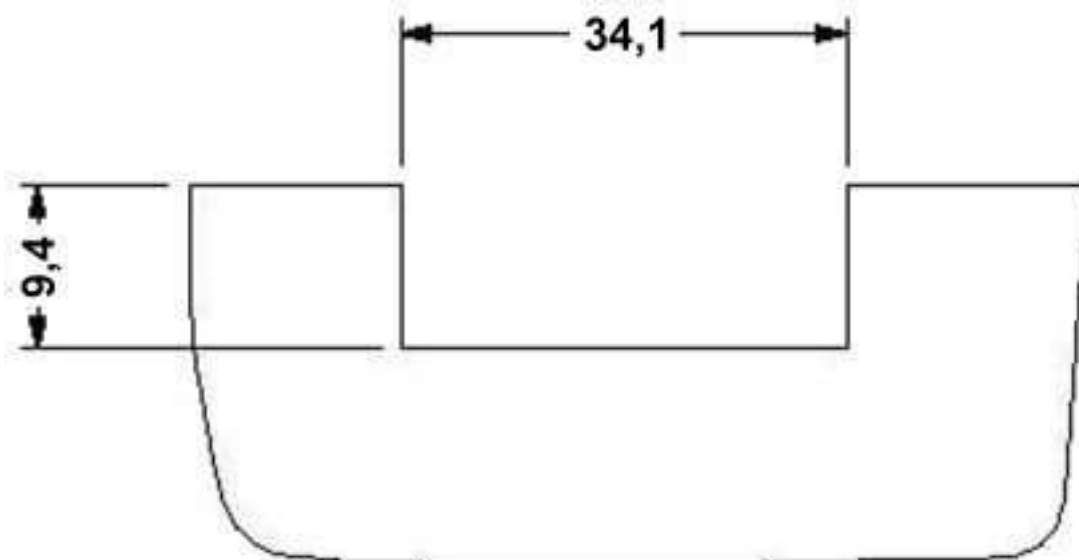
## Molded transformer terminal block - VTRK 4 WH - 3004980

Dimensioned drawing



Housing cutout (panel thickness 1.7) for two transformer terminal blocks

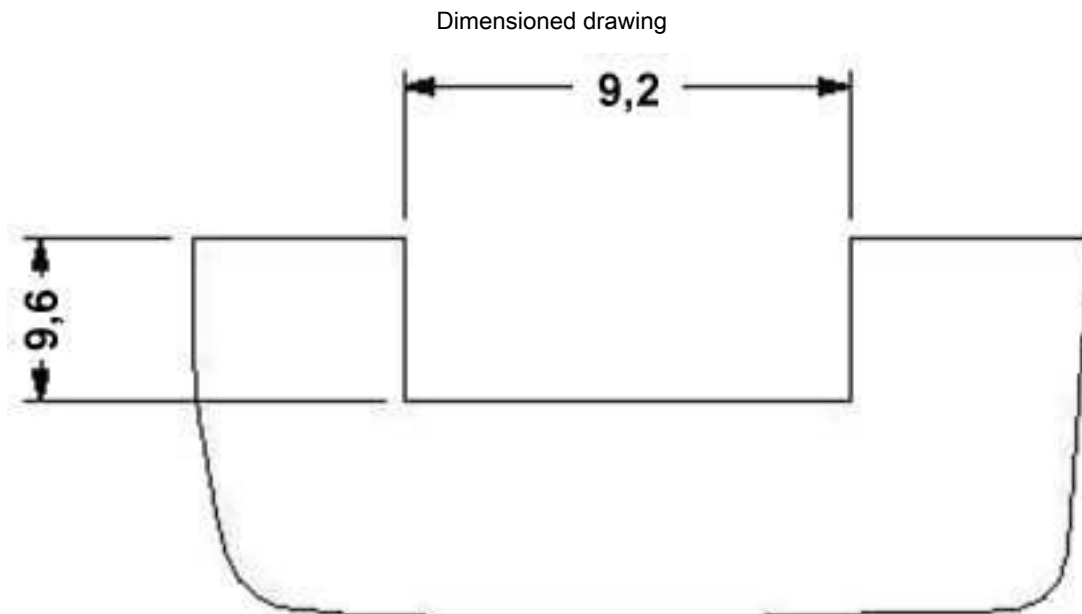
Dimensioned drawing



Housing cutout (panel thickness 1.7) for three transformer terminal blocks



## Molded transformer terminal block - VTRK 4 WH - 3004980



Housing cutout (panel thickness 1.8) for one transformer terminal block