

STRADA-T-DN

Beam for area lighting with shorter illumination distances optimized for CREE MX-3 and MX-6. Assembly with installation tape.

TECHNICAL SPECIFICATIONS:

Dimensions	19.6 x 15.5 mm
Height	9.6 mm
Fastening	tape, screw
ROHS compliant	yes ⓘ

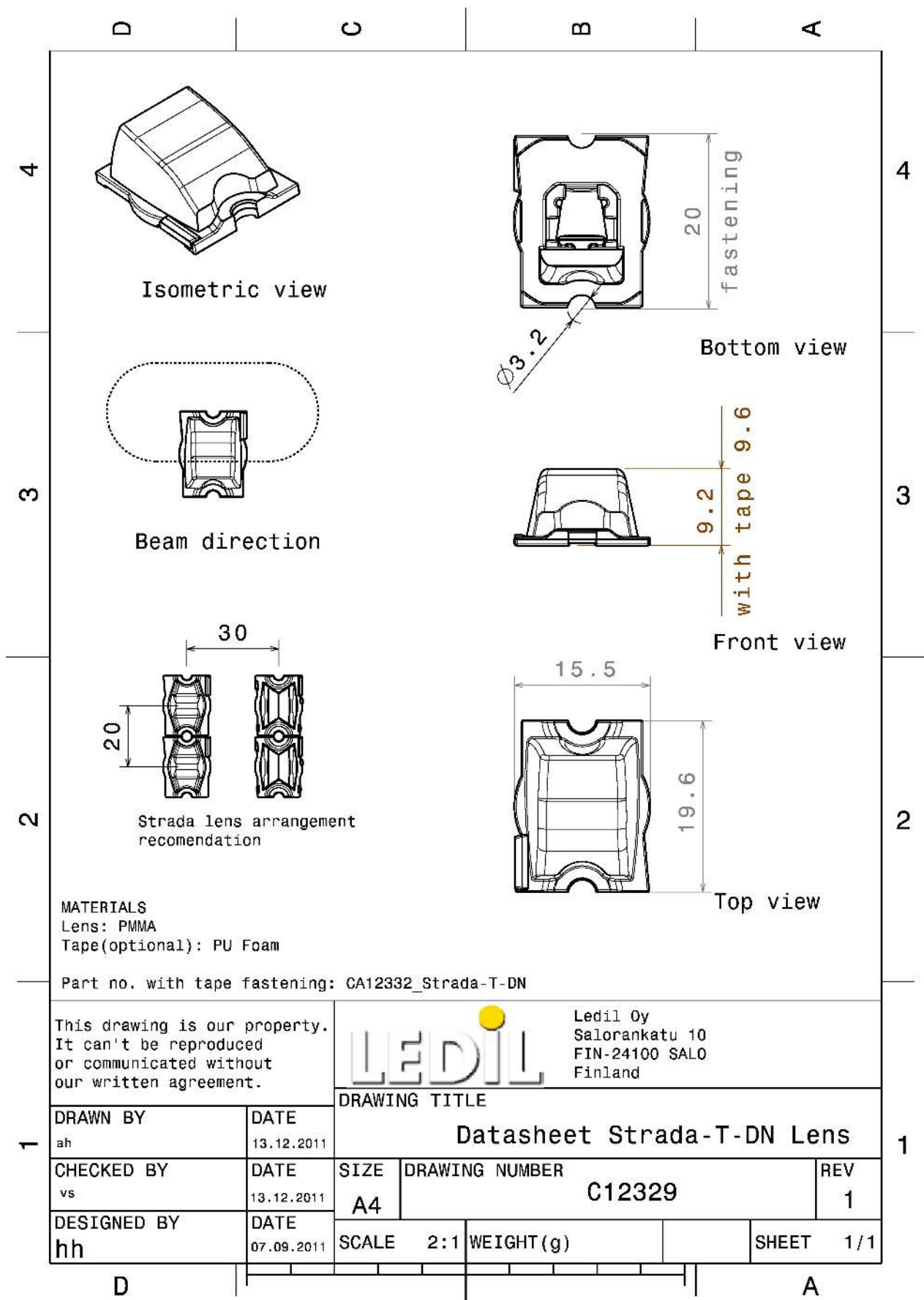
MATERIAL SPECIFICATIONS:

Component	Type	Material	Colour	Finish
STRADA-T-DN	Single lens	PMMA	clear	
VOSU-WU-M-365-TAPE	Tape			

ORDERING INFORMATION:

Component		Qty in box	MOQ	MPQ	Box weight (kg)
CA12332_STRADA-T-DN	Single lens	3360	240	240	5.7
» Box size: 451 x 254 x 197 mm					





MATERIALS
Lens: PMMA
Tape(optional): PU Foam

Part no. with tape fastening: CA12332_Strada-T-DN

This drawing is our property.
It can't be reproduced
or communicated without
our written agreement.

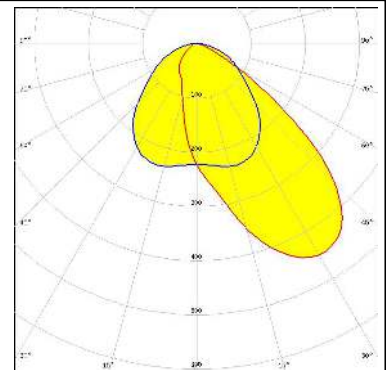
LEDIL Ledil Oy
Salorankatu 10
FIN-24100 SALO
Finland

DRAWN BY ah		DATE 13.12.2011	DRAWING TITLE Datasheet Strada-T-DN Lens		
CHECKED BY vs	DATE 13.12.2011	SIZE A4	DRAWING NUMBER C12329		REV 1
DESIGNED BY hh	DATE 07.09.2011	SCALE 2:1	WEIGHT (g)	SHEET 1/1	

PHOTOMETRIC DATA (MEASURED):



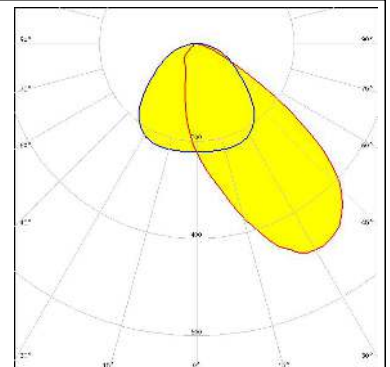
LED MX-6
 FWHM Asymmetric
 Efficiency 93 %
 Peak intensity cd/lm
 LEDs/each optic 1
 Light colour White
 Required components:



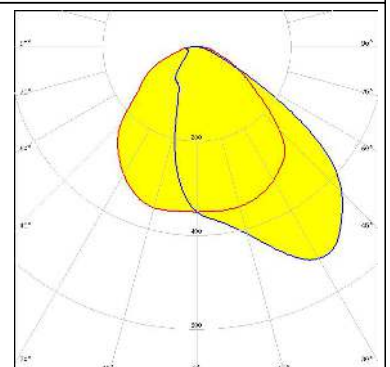
LED NS3x83
 FWHM Asymmetric
 Efficiency 93 %
 Peak intensity cd/lm
 LEDs/each optic 1
 Light colour White
 Required components:



LED NS6x83
 FWHM Asymmetric
 Efficiency 93 %
 Peak intensity cd/lm
 LEDs/each optic 1
 Light colour White
 Required components:



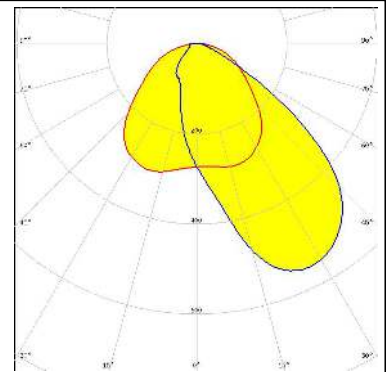
LED NVSW219D
 FWHM Asymmetric
 Efficiency 93 %
 Peak intensity 0.530 cd/lm
 LEDs/each optic 1
 Light colour White
 Required components:



PHOTOMETRIC DATA (MEASURED):

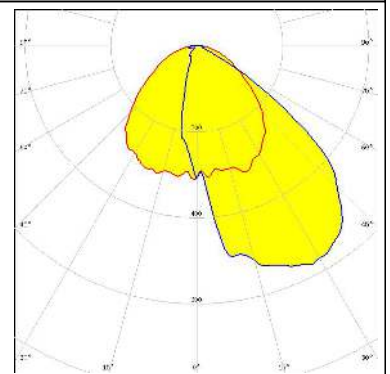
OPTOGAN

LED OLP-5065F6L-06A
FWHM Asymmetric
Efficiency 92 %
Peak intensity 0.560 cd/lm
LEDs/each optic 1
Light colour White
Required components:



STANLEY

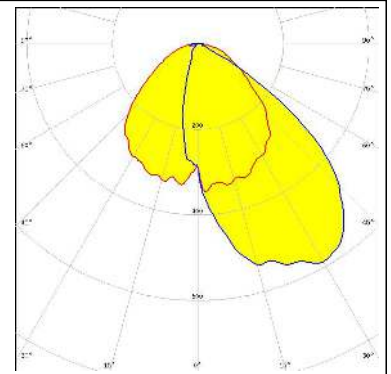
LED 3J (GSPW16)
FWHM Asymmetric
Efficiency %
Peak intensity cd/lm
LEDs/each optic 1
Light colour White
Required components:



PHOTOMETRIC DATA (SIMULATED):

STANLEY

LED 6J (GTDW16)
FWHM Asymmetric
Efficiency 90 %
Peak intensity 0.590 cd/lm
LEDs/each optic 1
Light colour White
Required components:



GENERAL INFORMATION:

NOTE: The typical beam angle will be changed by different color, chip size and chip position tolerance. The typical total beam angle is the full angle measured where the luminous intensity is half of the peak value.

MATERIALS:

As part of our continuous research and improvement processes, and to ensure the best possible quality and availability of our products, LEDiL reserves the right to change material grades without notice.

PRODUCT DATA USER AGREEMENT AND DISCLAIMER:

The measured data in the provided downloadable LEDiL Product Datasheets and Mechanical 2D-Drawings is rounded and provided as reference for planning. LEDiL Oy's optical specifications have been verified by conducting performance testing of the products in accordance with the company's quality system. The reported data are averaged results of multiple measurements with typical variation. LEDiL Oy reserves the right to without prior notification make changes and improvements to its products.

LEDiL Oy assumes neither warranty, nor guarantee nor any other liability of any kind for the contents and correctness of the provided data. The provided data has been generated with highest diligence but the provided data may in reality not represent the complete possible variation range of all intrinsic parameters. Therefore, in certain cases a deviation from the provided data could occur.

LEDiL Oy reserves the right to undertake technical changes of its products without further notification which could lead to changes in the provided data. LEDiL Oy assumes no liability of any kind for the possible deviation from any provided data or any other damage resulting from the usage of the provided data.

The user agrees to this disclaimer and user agreement with the download or usage of the provided files.

LEDiL Oy

Joensuunkatu 13
FI-24240 SALO
Finland

LEDiL Inc.

228 West Page Street
Suite D
Sycamore IL 60178
USA

Local sales and technical support

[www.ledil.com/
where_to_buy](http://www.ledil.com/where_to_buy)

Shipping locations

Salo, Finland
Hong Kong, China

Distribution Partners

[www.ledil.com/
where_to_buy](http://www.ledil.com/where_to_buy)