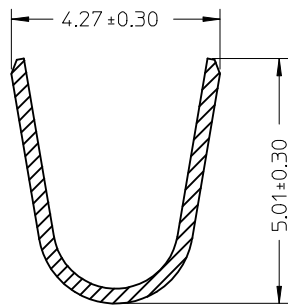


36663

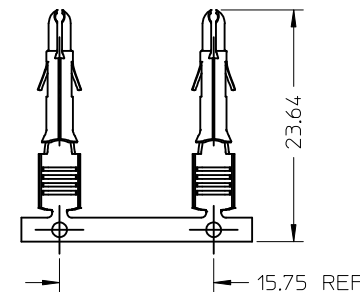
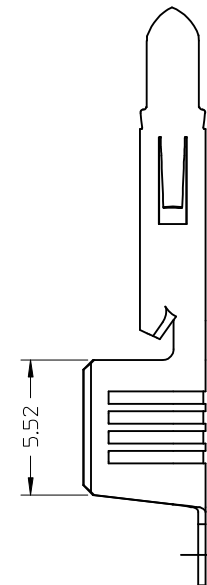
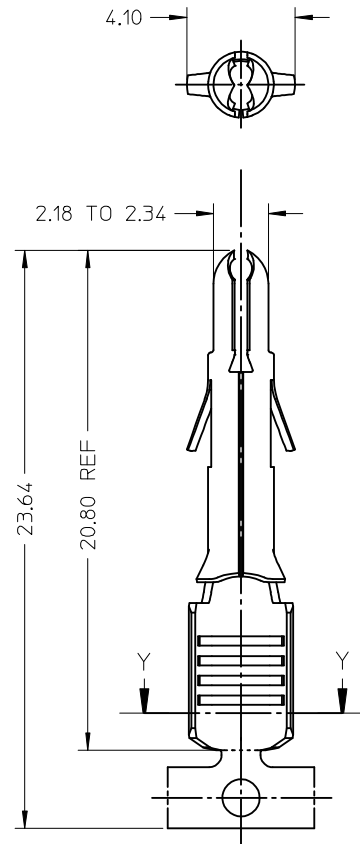
MATERIAL No.	FINISH	WIRE SIZE	INSULATION DIA	PACKAGING
36663-0001	SEE NOTE 2	10-12AWG	5.08 MAX	REEL
36663-0002	SEE NOTE 2	10-12AWG	5.08 MAX	LOOSE

NOTES:

- MATERIAL : BRASS
- FINISH : HOT TIN DIP, THICKNESS 0.51 MICROMETER MIN
- PIN TERMINALS FOR USE WITH THE .084/(2.13) SERIES HOUSINGS.  
 PLUG (42021-\*\*)   
 CAP (42022-\*\*)   
 PIN TERMINAL TO MATE WITH SOCKET TERMINALS OF .084/(2.13) DIA SERIES
- CRIMP RANGE SEE CHART
- PRODUCT SPECIFICATION : PS-36663-001 APPLIES



SECTION Y-Y



TERMINALS IN CHAIN FORM  
SCALE 1:1

EC NO: I2005-0004 DRWN: SSUDHIR 2004/07/07 CHKD: DGDATHA 2004/07/07 APPR: DGDATHA 2004/07/08	QUALITY SYMBOLS ▽ - 0 ∇ - 0	GENERAL TOLERANCES (UNLESS SPECIFIED)		SCALE 5:1	DESIGN UNITS METRIC	THIRD ANGLE PROJECTION	REVISE ON CAD ONLY		
		mm	INCH	DIMENSION STYLE MM ONLY					
		4 PLACES	± ---	± ---	DRAWN BY SSUDHIR	DATE 2004/07/07	STAMP PART BRASS TERMINAL SPLIT PIN MLX 10-12AWG 5.08 INS DIA MOLEX INCORPORATED		
		3 PLACES	± ---	± ---	CHECKED BY DGDATHA	DATE 2004/07/07			
2 PLACES	± 0.25	± ---	ANGULAR ± 2 °		MATERIAL NO. SEE CHART	DOCUMENT NO. SD-36663-001	SHEET NO. 1 OF 1		
1 PLACE	± 0.38	± ---	DRAFT WHERE APPLICABLE MUST REMAIN WITHIN DIMENSIONS		THIS DRAWING CONTAINS INFORMATION THAT IS PROPRIETARY TO MOLEX INCORPORATED AND SHOULD NOT BE USED WITHOUT WRITTEN PERMISSION				