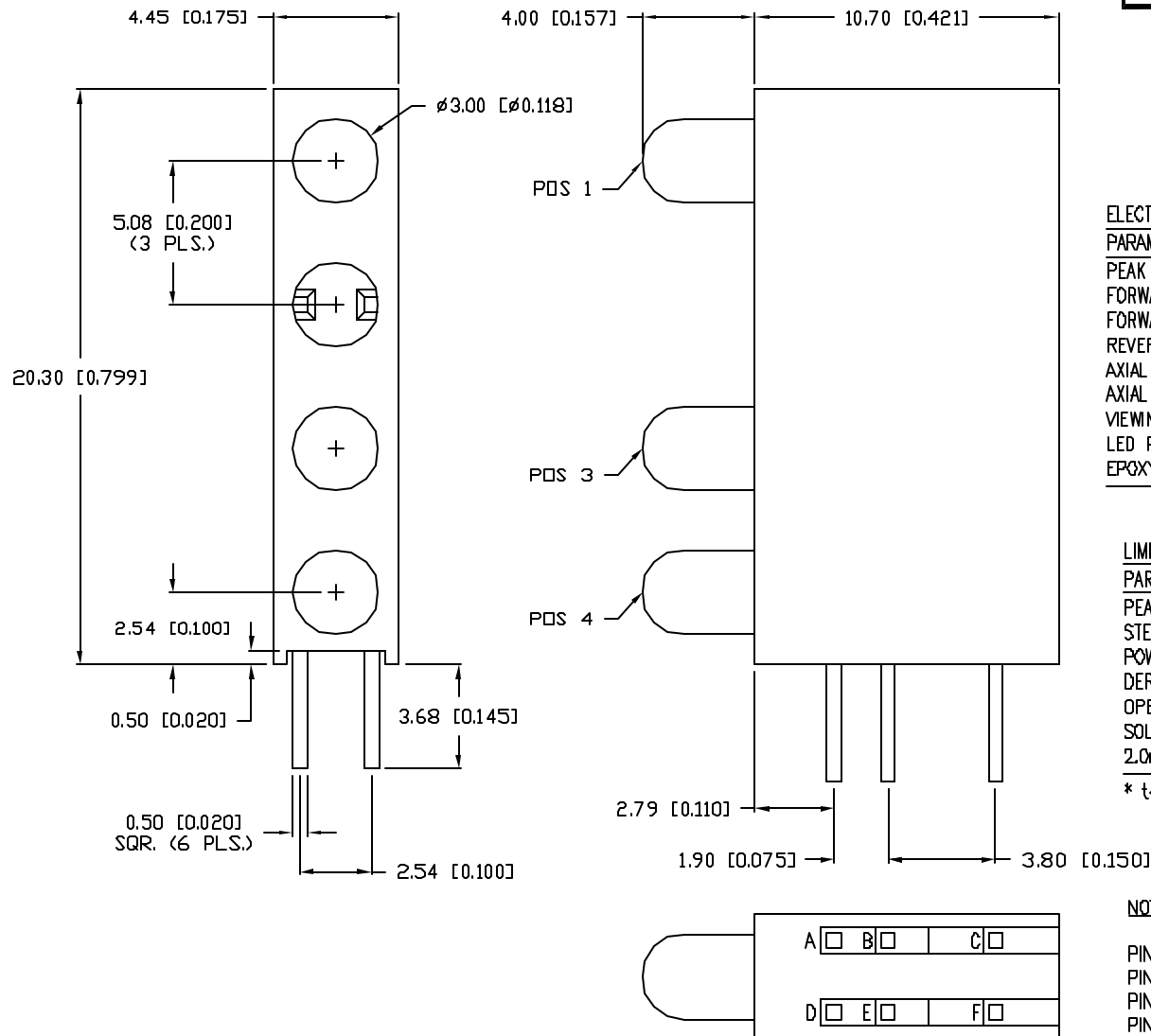


UNCONTROLLED DOCUMENT

PART NUMBER  
SSF-LXH475LGXYGD

REV.



ELECTRO-OPTICAL CHARACTERISTICS  $T_A=25^\circ\text{C}$   $I_f=20\text{mA}$

PARAMETER	GREEN	YELLOW	UNITS	TEST COND
PEAK WAVELENGTH	565	585	nm	
FORWARD VOLTAGE (TYP.)	2.2	2.1	$V_f$	
FORWARD VOLTAGE (MAX.)	2.6	2.5	$V_f$	
REVERSE VOLTAGE	5.0	5.0	$V_r$	$I_r=100\mu\text{A}$
AXIAL INTENSITY (TYP.)	30	30	mcd	$I_f=20\text{mA}$
AXIAL INTENSITY (MIN.)	1.0	1.0	mcd	$I_f=2\text{mA}$
VIEWING ANGLE	60	60	$2x$ theta	
LED POSITION:	1,4	3		
EPGXY LENS FINISH:	GREEN	YELLOW		

LIMITS OF SAFE OPERATION AT  $25^\circ\text{C}$  PER LED

PARAMETER	COLORS	MAX	UNITS
PEAK FORWARD CURRENT*		150	mA
STEADY CURRENT	(Y/G)	30/25	mA
POWER DISSIPATION		105	mW
DERATE FROM $25^\circ\text{C}$		-1.6	$\text{mW}/^\circ\text{C}$
OPERATING, STORAGE TEMP.		-40 TO +85	$^\circ\text{C}$
SOLDERING TEMP.		+260	$^\circ\text{C}$
2.0mm FROM BODY			3 SEC. MAX

\*  $t < 10\mu\text{s}$

NOTES:

PIN A,C: GREEN CATHODE  
PIN B: YELLOW CATHODE  
PIN D,F: GREEN ANODE  
PIN E: YELLOW ANODE

UNCONTROLLED DOCUMENT

\*UNLESS OTHERWISE SPECIFIED TOLERANCES PER DECIMAL PRECISION ARE: X=±1 (±0.039), XX=±0.5 (±0.020), XXX=±0.25 (±0.010), XXXX=±0.127 (±0.005). LEAD SIZE=±0.05 (±0.002), LEAD LENGTH=±0.75 (±0.030). MIN.= +DECIMAL PRECISION -0.00 MAX.= +0.00 -DECIMAL PRECISION

REV.

PART NUMBER

SSF-LXH475LGXYGD

CONFIDENTIAL INFORMATION

THE INFORMATION CONTAINED IN THIS DOCUMENT IS THE PROPERTY OF LUMEX INC. EXCEPT AS SPECIFICALLY AUTHORIZED IN WRITING BY LUMEX INC., THE HOLDER OF THIS DOCUMENT SHALL KEEP ALL INFORMATION CONTAINED HEREIN CONFIDENTIAL AND SHALL PROTECT SAME IN WHOLE OR IN PART FROM DISCLOSURE AND DISSEMINATION TO ALL THIRD PARTIES.

RELIABILITY NOTE

OUR MANY YEARS OF EXPERIENCE DATA ACCUMULATION INDICATE THAT SOLDER HEAT IS A MAJOR CAUSE OF EARLY AND FUTURE FAILURE. PLEASE PAY ATTENTION TO YOUR SOLDERING PROCESS.



290 E. HELEN ROAD  
PALATINE, IL 60067-6976  
PHONE: +1.847.359.2790  
US WEB: www.lumex.com  
TW WEB: www.lumex.com.tw

T-3mm (T-1) FOUR UNIT FAULT INDICATOR,  
POS. 1 & 4: 565nm GREEN, POS. 3: 585nm YELLOW  
DIFFUSED PER COLOR, LOW CURRENT.

DRAWN BY:

CHECKED BY:

APPROVED BY:

DATE: 7.30.02

CT

PAGE: 1 OF 1

SCALE: N/A