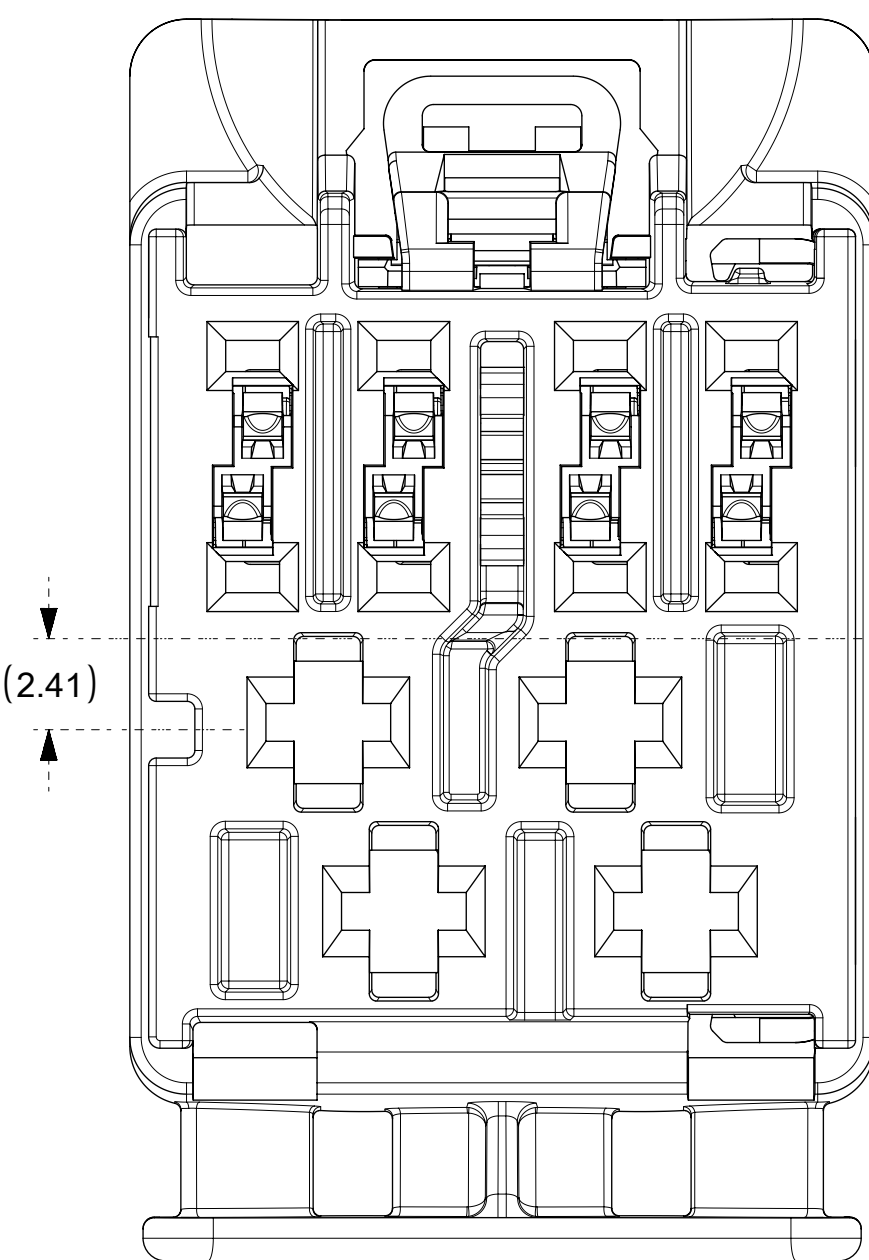
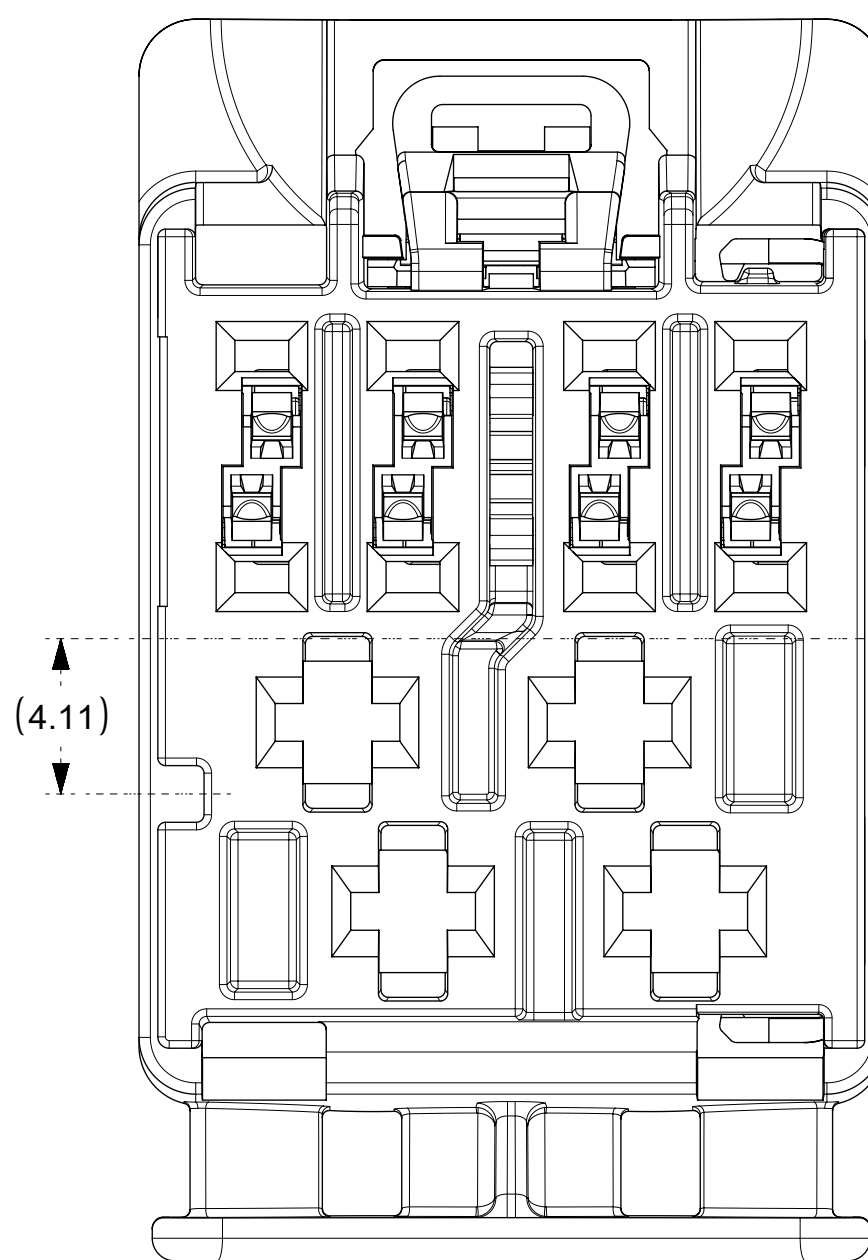


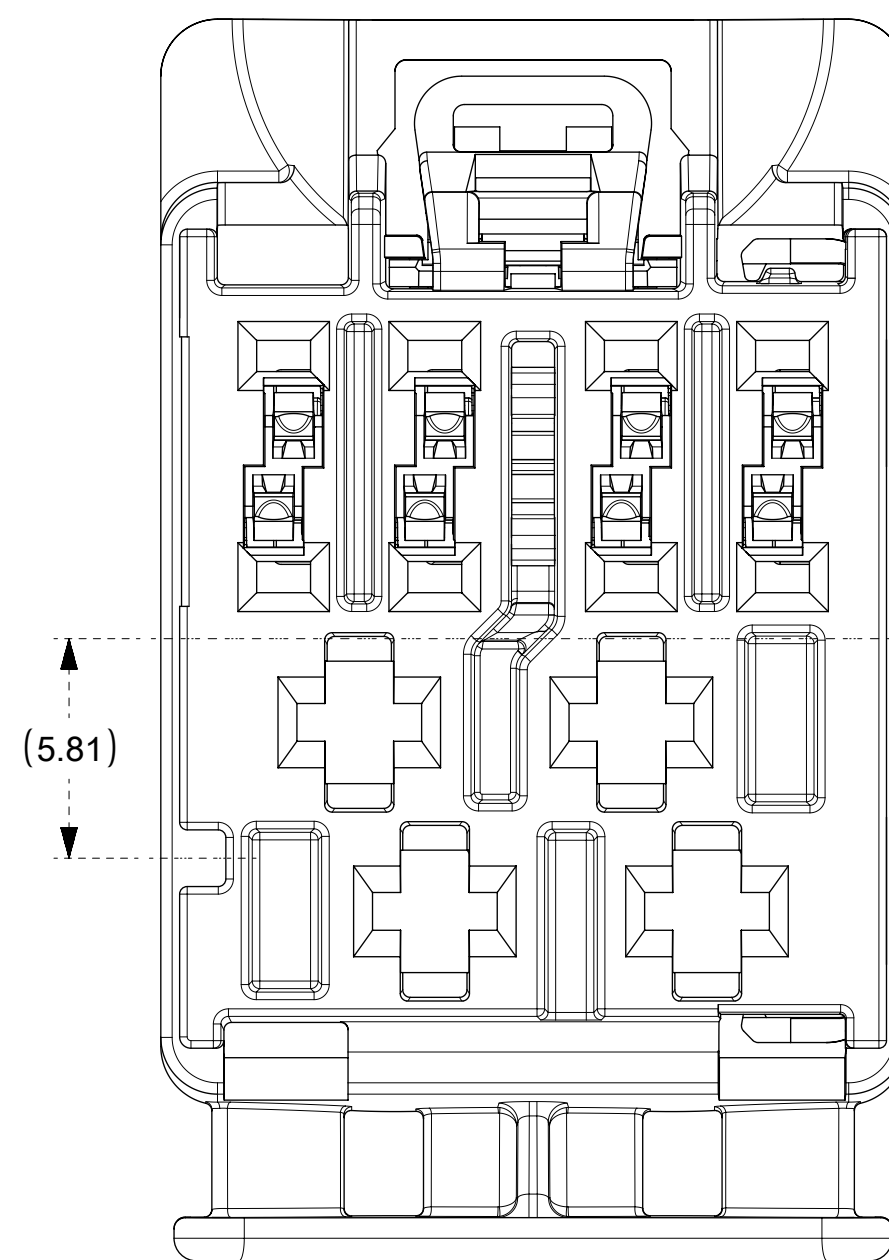
12WAY CONNECTOR ASSEMBLY
KEY 1
P/N 1600260001



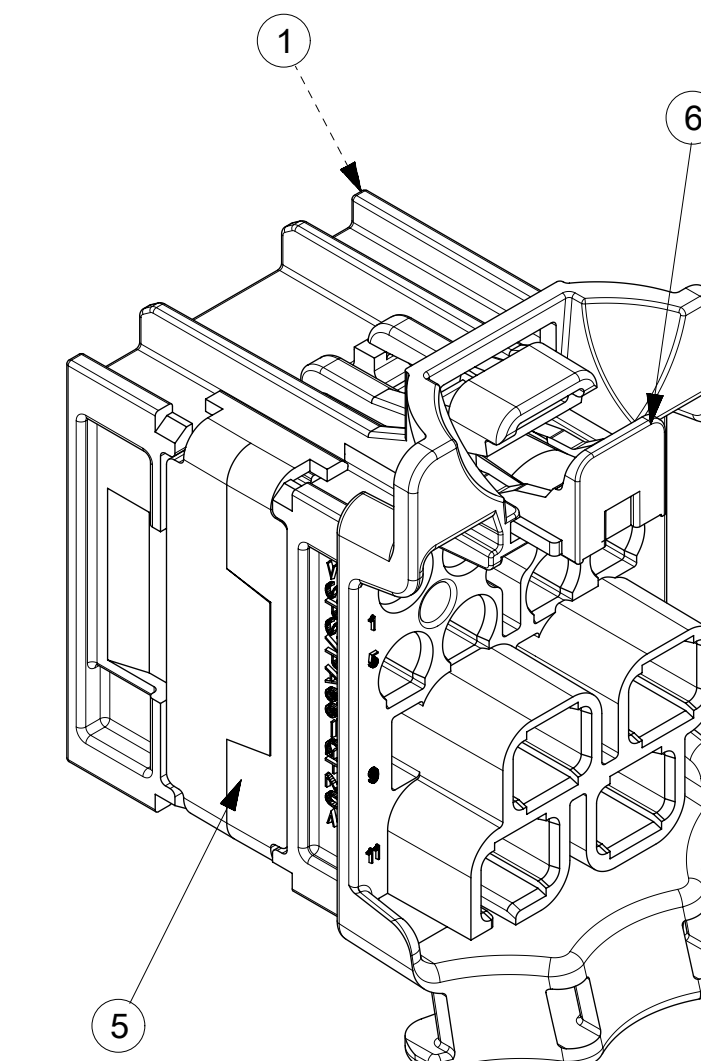
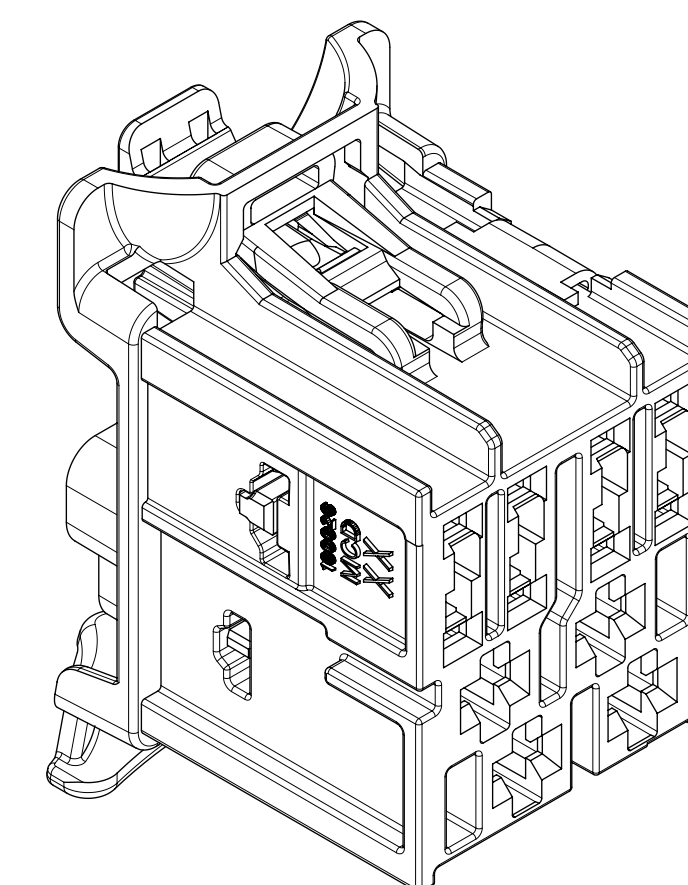
12WAY CONNECTOR ASSEMBLY
KEY 2
P/N 1600260002



12WAY CONNECTOR ASSEMBLY
KEY 3
P/N 1600260003



12WAY CONNECTOR ASSEMBLY
KEY 4
P/N 1600260004



ITEM	DESCRIPTION	COLOR	RECYCLING CODE	WEIGHT (GRAMS)	NO OF ITEMS REQUIRED			
1	CONN HOUSING - KEY 1	BLACK	SPS/PA66-GF20	5.0	1			
2	CONN HOUSING - KEY 2	LT GREEN B	SPS/PA66-GF20	5.0		1		
3	CONN HOUSING - KEY 3	LT PURPLE	SPS/PA66-GF20	5.0			1	
4	CONN HOUSING - KEY 4	LT GRAY	SPS/PA66-GF20	5.0				1
5	ISL	NATURAL	SPS-GF30	0.37	1	1	1	1
6	CPA	NATURAL	PA66-GF50	0.08	1	1	1	1

MOLEX ASSEMBLY PART NO.'S	KEY
1600260001	KEY 1
1600260002	KEY 2
1600260003	KEY 3
1600260004	KEY 4

NOTES: VALID UNLESS OTHERWISE SPECIFIED

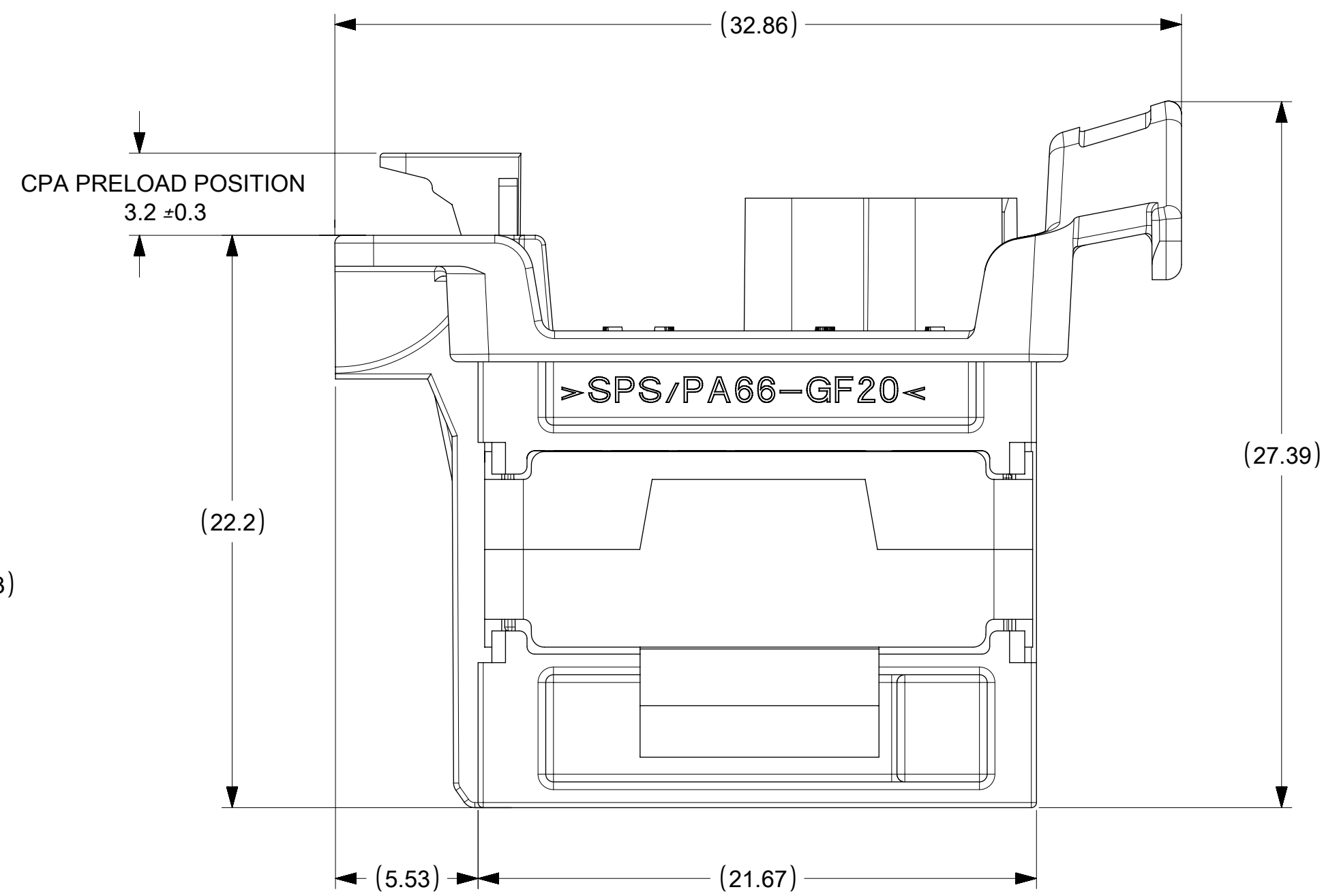
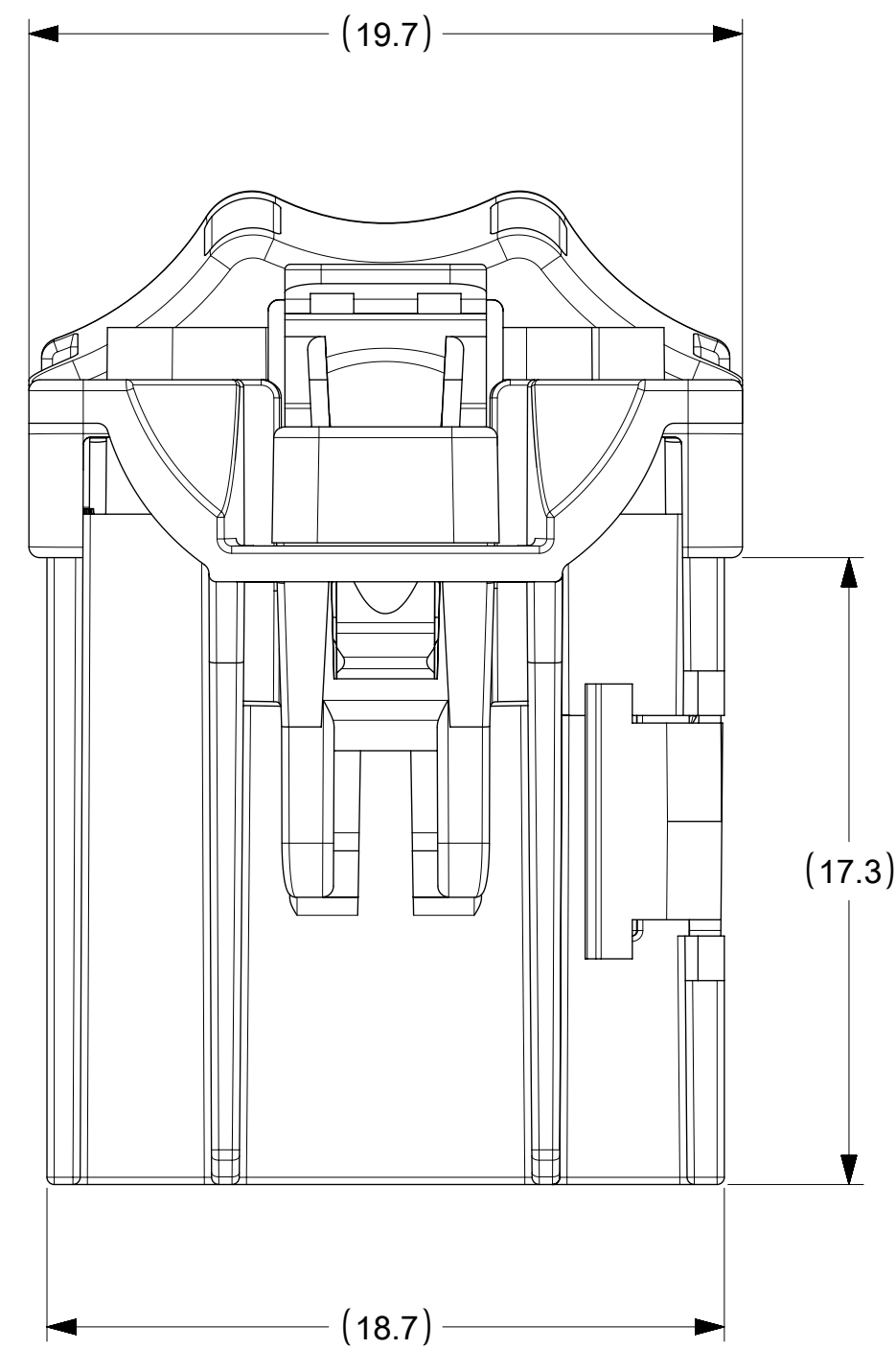
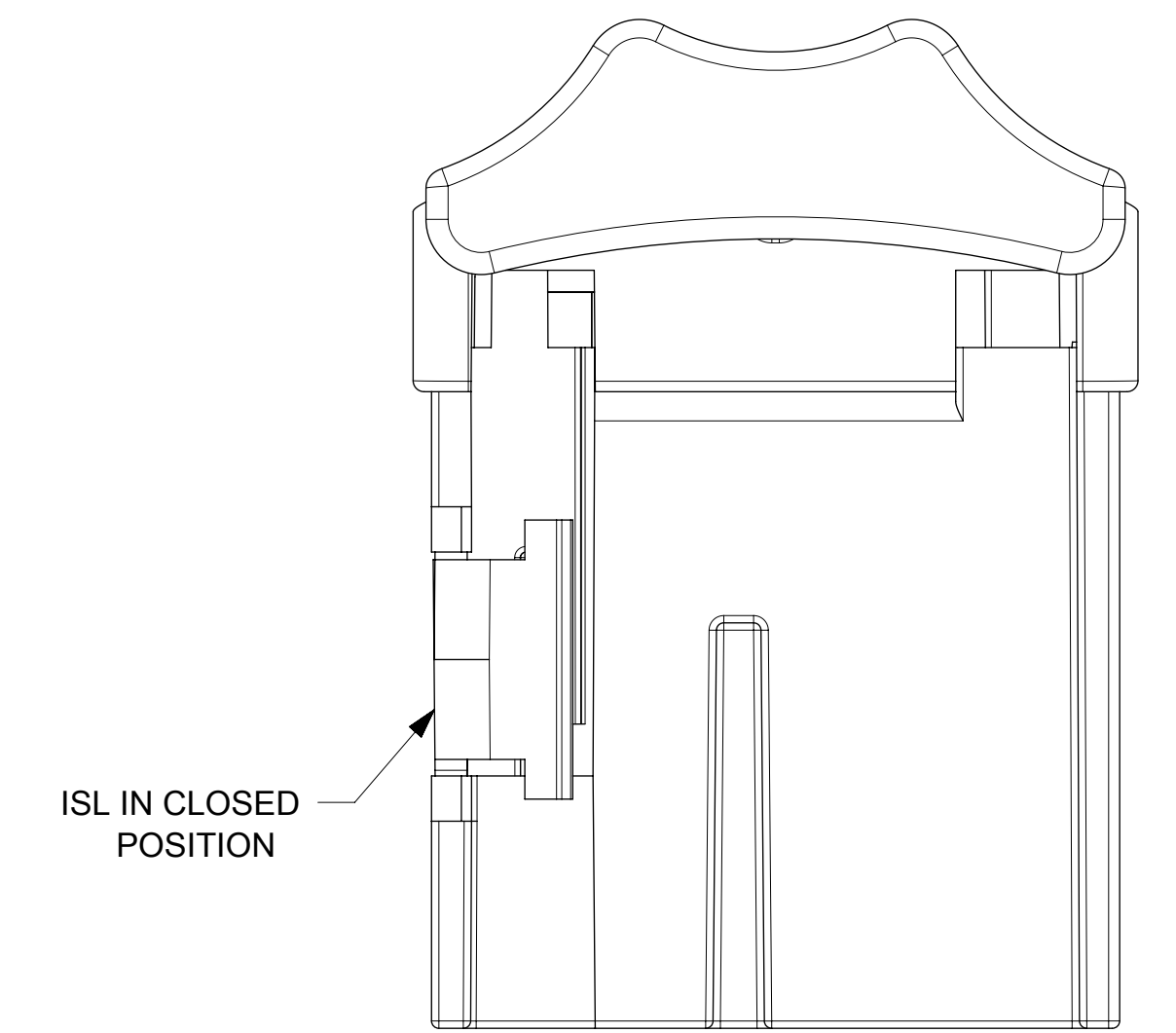
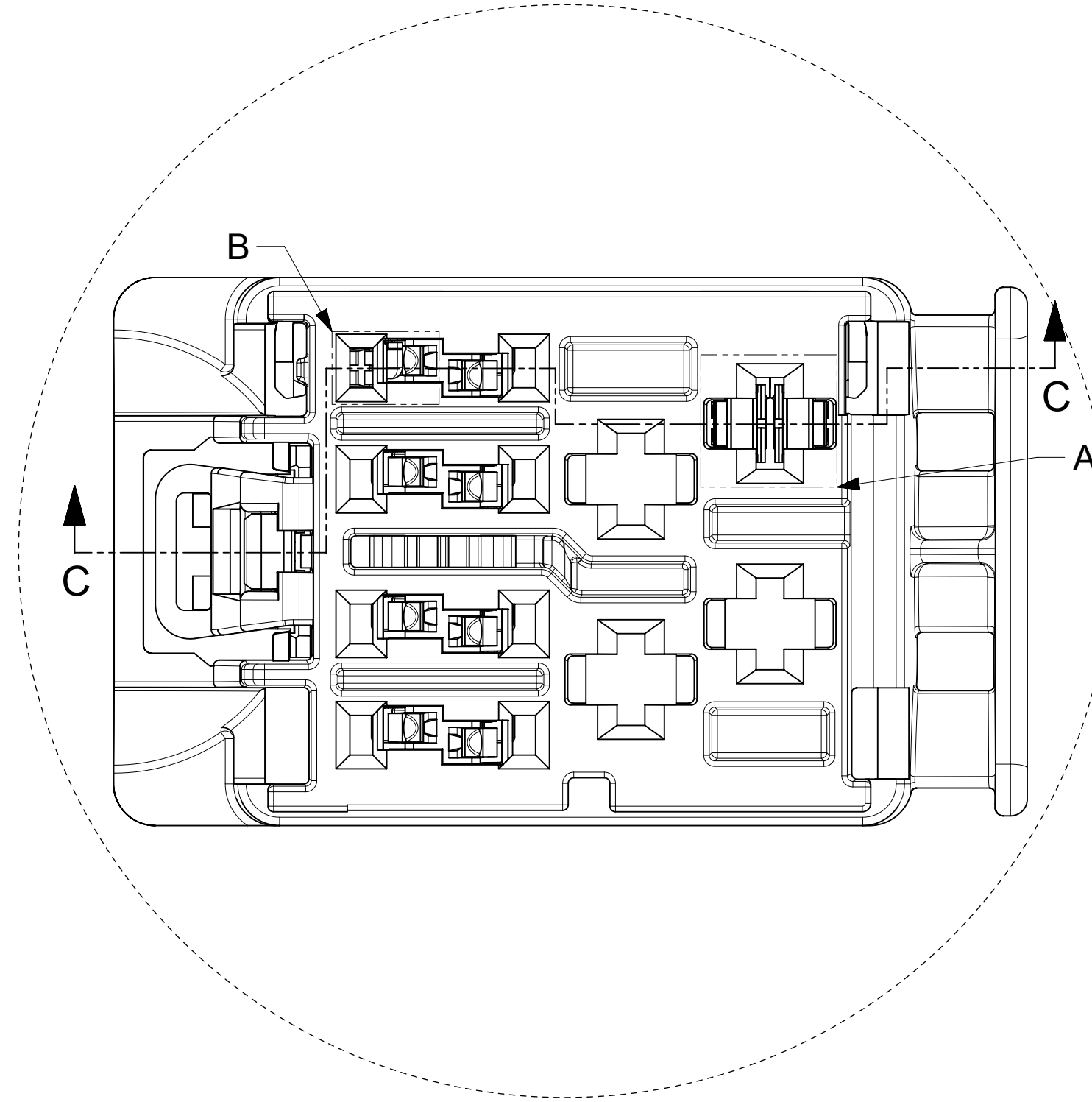
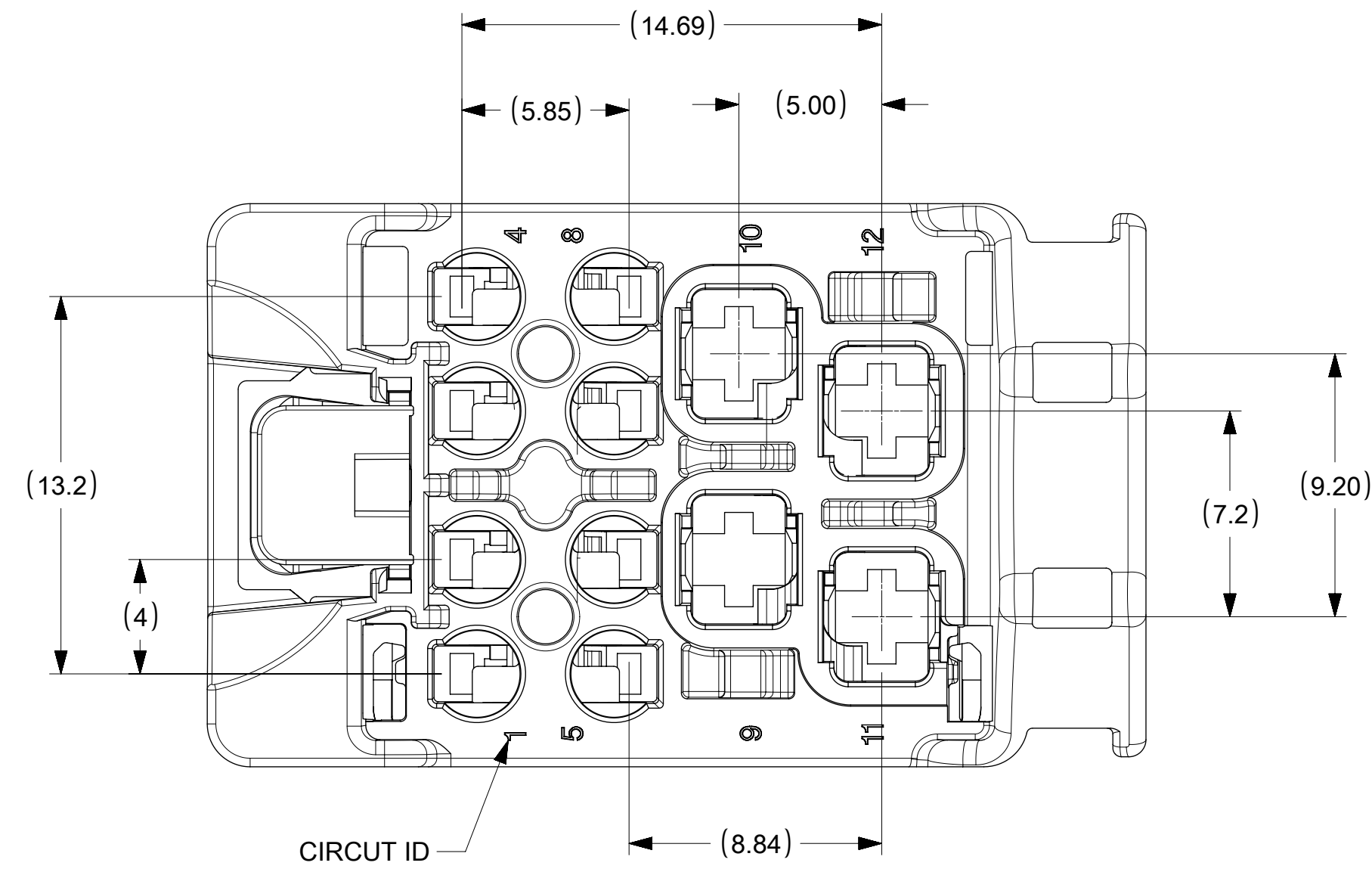
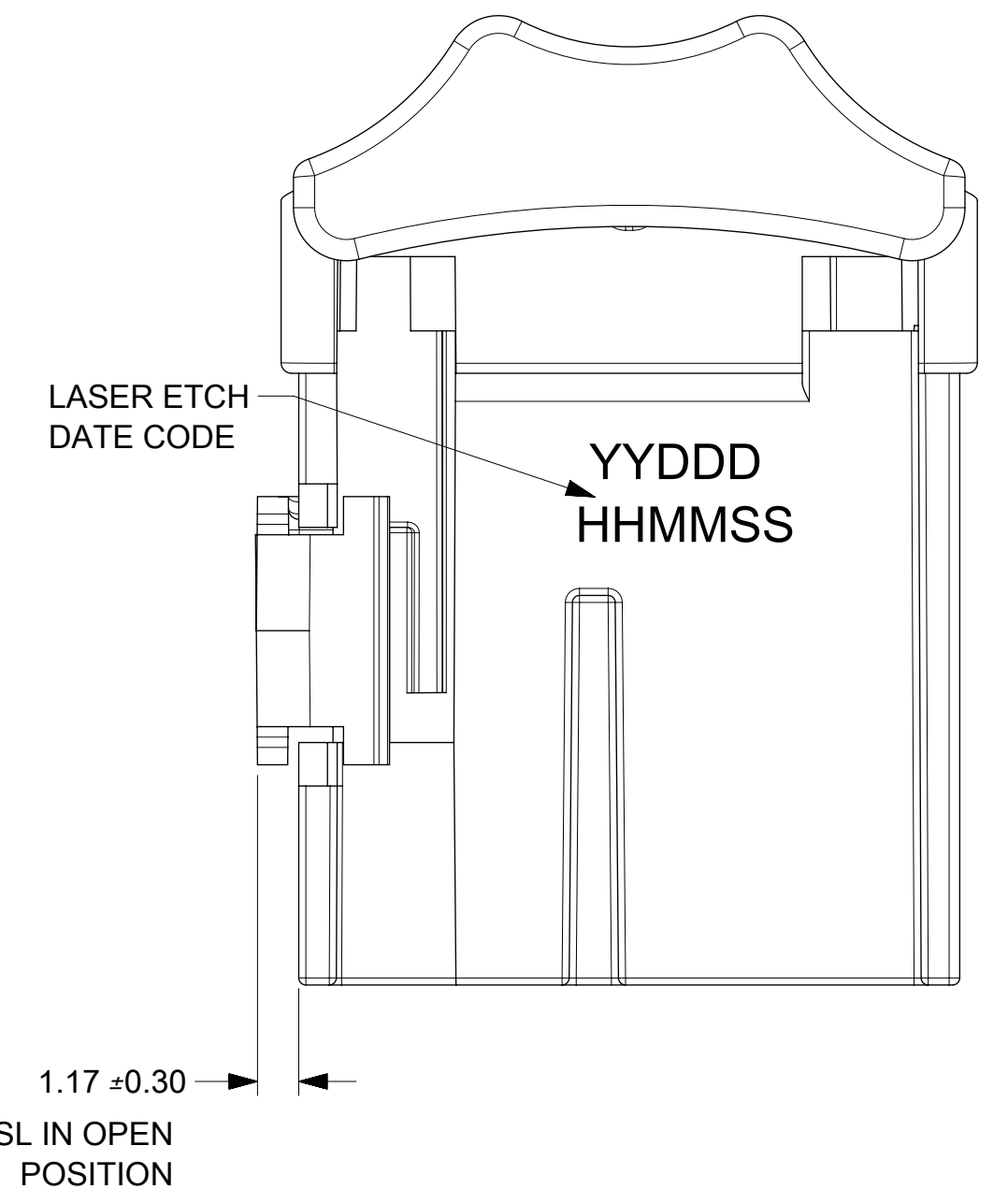
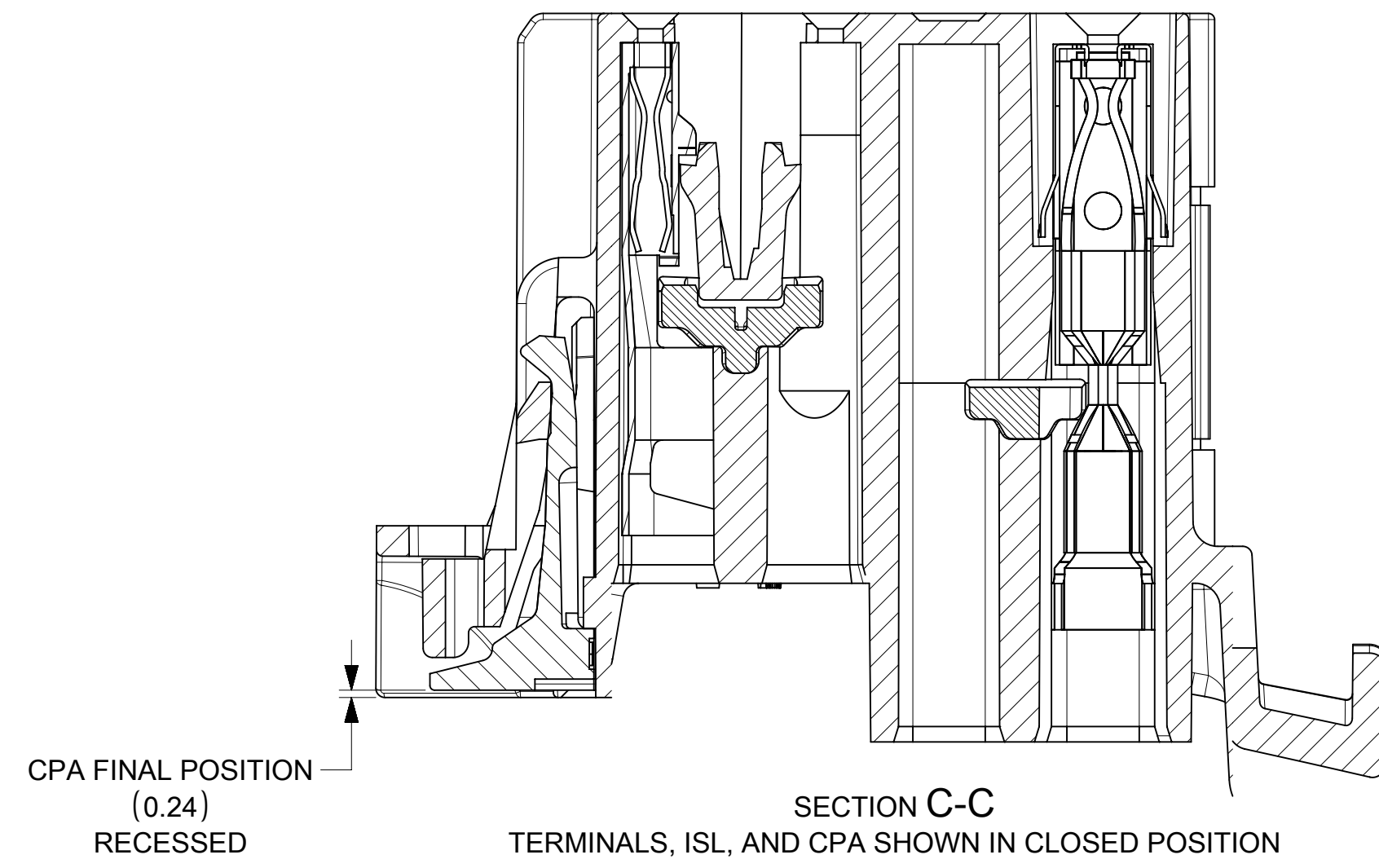
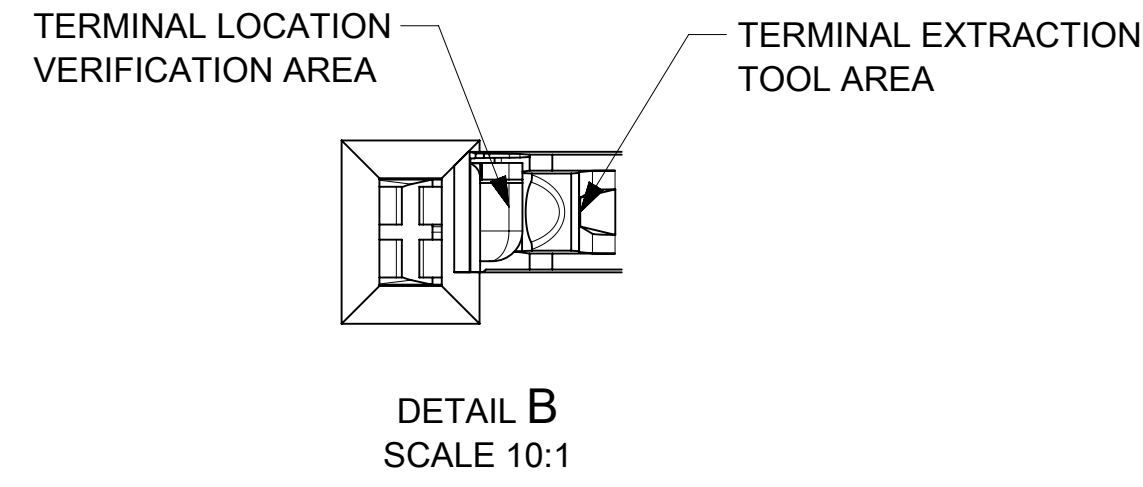
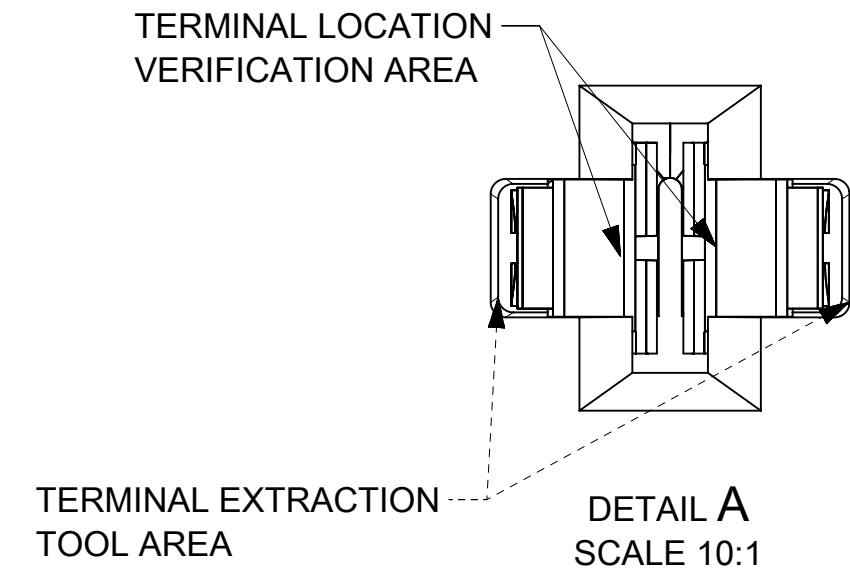
- GENERAL:
 - APPLICATION SPECIFICATION SEE: AS-160014-001
 - PRODUCT SPECIFICATION SEE: PS-160014-001
 - PACKAGING SPECIFICATION PER MOLEX DRAWING: PK-31302-266
 - PARTS MUST BE IN COMPLIANCE TO MOLEX CHEMICAL SUBSTANCES FOR PRODUCTS AND PACKAGING SPECIFICATION: ES-40000-5016
 - DATA MUST BE SUBMITTED UNDER THE MOLEX PART NUMBER TO IMDS (COMPANY ID#13255)
- DESIGN - MATERIALS:
 - SEE BOM TABLE
- DESIGN - GEOMETRY:
 - ALL GRAPHIC DATA IS BASIC (NO TOLERANCE) AND MUST BE TAKEN FROM THE DATA FILE AT ITS LATEST REVISION.
 - PRODUCT DESIGN MODEL NUMBER(S): SEE BOM TABLE
 - GEOMETRIC DIMENSIONS AND TOLERANCES PER ASME Y14.5M-2009
 - EDGES AND UNDIMENSIONED DETAILS PER ISO13715
 - CORNERS SHOWN AS SHARP TO BE R 0.2 MAX.
 - MARKED TEXT TO INCLUDE RECYCLING CODE, CAVITY ID, VENDOR IDENTIFICATION, AND CUSTOMER MATERIAL NUMBER.
 - LASER ETCHED DATE CODE
 - 1ST THROUGH 2ND DIGIT = CALENDAR YEAR
 - 3RD THROUGH 5TH DIGIT = "DAY #" OF YEAR
 - 6TH THROUGH 7TH DIGIT = HOUR OF DAY
 - 8TH THROUGH 9TH DIGIT = MINUTE OF HOUR
 - 10TH THROUGH 11TH DIGIT = SECOND OF MINUTE
- DESIGN - MANUFACTURING:
 - VISUAL DEFECTS SHALL MEET COSMETIC STANDARD PS-45499-002 (Class B)

B2	UPDATED DELPHI 1.2 TERMINAL PNS
B1	UPDATED WIRE GAGE RANGE OF 1.20MM TERMINAL
B	UPDATED VIEWS SAP#: 10898772
A	NX RE-MASTERING SAP # 10816434
4	UUA2015-1899 SAP # 10698159 JCONDON 06/17/2015
3	UUA2015-1606 SAP # 10685685 JCONDON 04/23/2015
1	RELEASE FOR PROTOTYPE SAP # XXXXXXXX

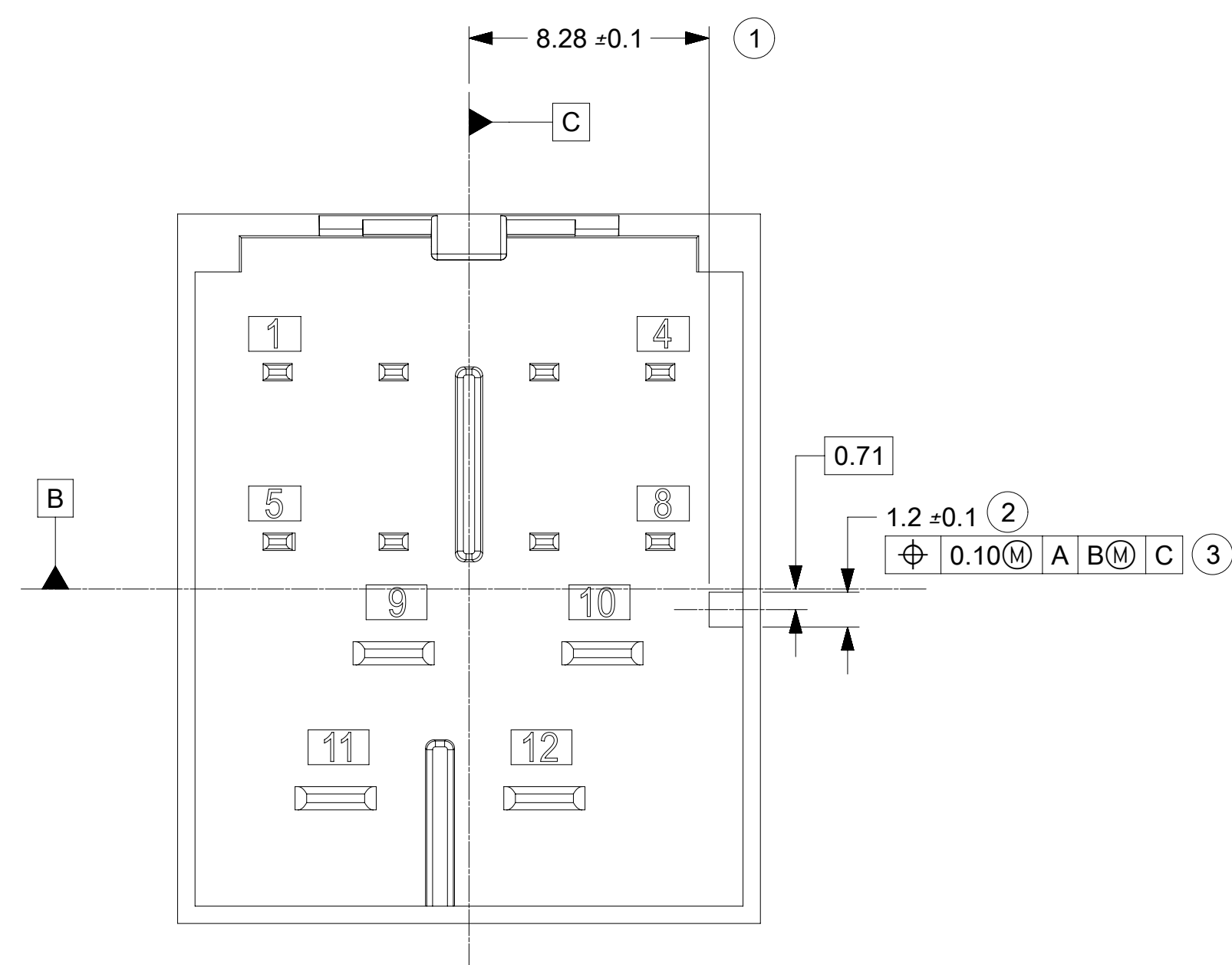
PART NUMBER	PLATING	SUPPLIER	WIRE GAGE (mm2)	TERMINAL FAMILY	WIRE SPECIFICATION
35072403	TIN PLATING	DELPHI	0.35 - 0.5	TAXI TERM OCS 1.2	SAE/ J1128 THIN WALL INSULATION GMW 15626 INSULATION TYPE FLR (REGULAR THIN WALL)
35072404			0.75 - 0.8		
35072405			0.8 - 1.0		
35072406			1.25 - 1.5		
SMSA-A031T-M1.2		JST	0.5 - 0.75	MSA 1.2mm TERMINAL	
SMSA-A041T-M1.2			1.0 - 1.5		
1-968851-1		TE	1.0 - 2.5	AMP MCP 2.8	
1-968849-1			0.5 - 1.0		
15457849		DELPHI	1.5 - 2.5	CTS 2.8mm	
15457848			0.5 - 1.0		

SYMBOLS	THIS DRAWING CONTAINS INFORMATION THAT IS PROPRIETARY TO MOLEX ELECTRONIC TECHNOLOGIES, LLC AND SHOULD NOT BE USED WITHOUT WRITTEN PERMISSION	
DIMENSION UNITS	SCALE	CURRENT REV DESC: SEE TABLE
▽ = 0	mm	EC NO: 622293 DRWN: HTGU002 2019/08/13 CHK'D: JCONDON 2019/08/13 APPR: JCONDON 2019/08/13 INITIAL REVISION: DRWN: VYARAPPA 2017/02/07 APPR: KDEKOSKI 2017/03/23 DRAFT WHERE APPLICABLE MUST REMAIN WITHIN DIMENSIONS THIRD ANGLE PROJECTION DRAWING SERIES D-SIZE 160026
▽ = 0	GENERAL TOLERANCES (UNLESS SPECIFIED)	
▽ = 0	ANGULAR TOL ± 3.0°	
▽ = 0	4 PLACES ±	
▽ = 0	3 PLACES ±	
▽ = 0	2 PLACES ± 0.3	
▽ = 0	1 PLACE ± 0.3	
▽ = 0	0 PLACES ± 0.3	
■ = 0		
▽ = 0		

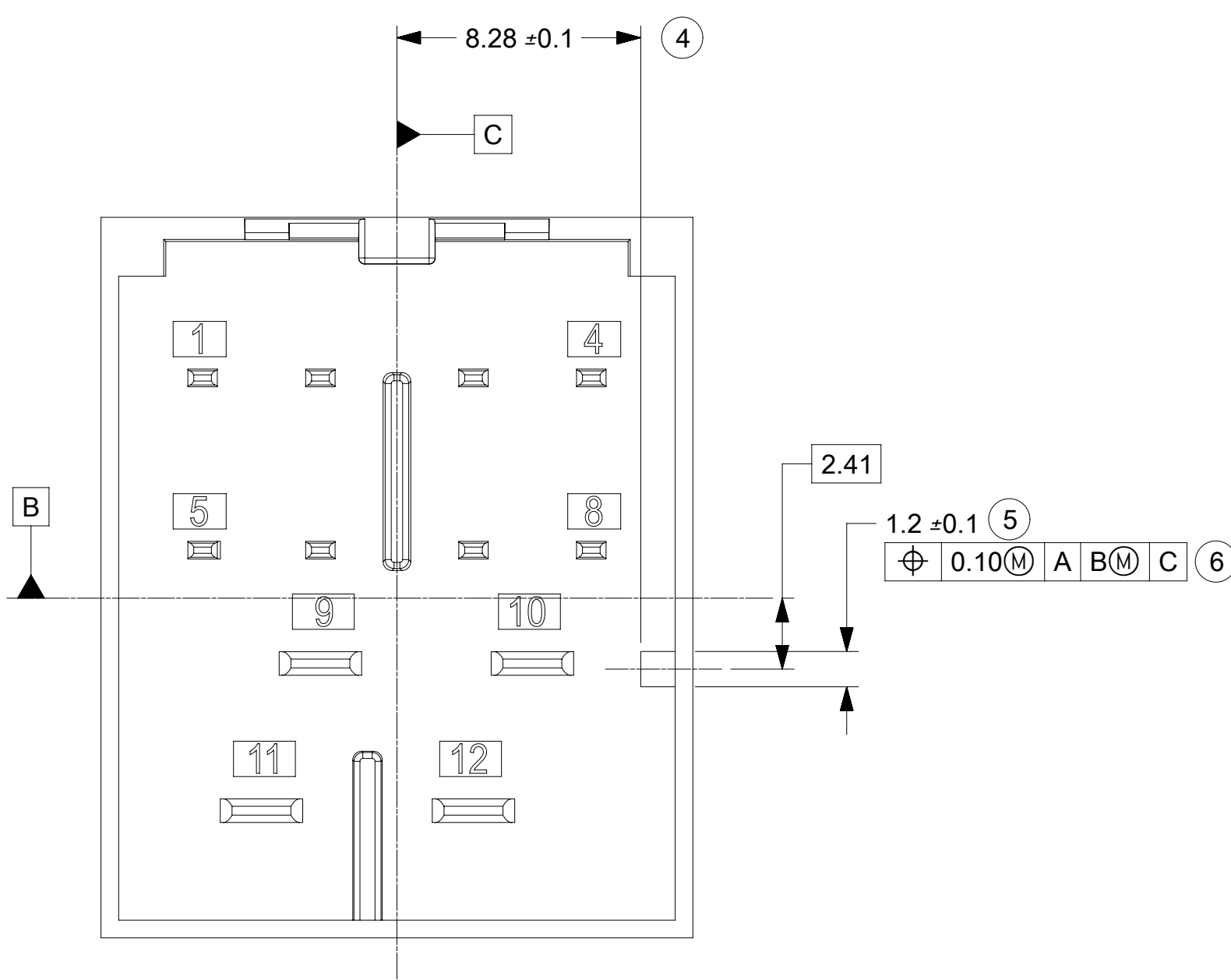
molex			
12WAY STAK50H HYBRID CONNECTOR ASSEMBLY			
PRODUCT CUSTOMER DRAWING			
DOCUMENT NUMBER	DOC TYPE	DOC PART	REVISION
SD-160026-0001	PSD	000	B2
MATERIAL NUMBER	CUSTOMER	SHEET NUMBER	
SEE CHART	GENERAL MARKET	1 OF 2	



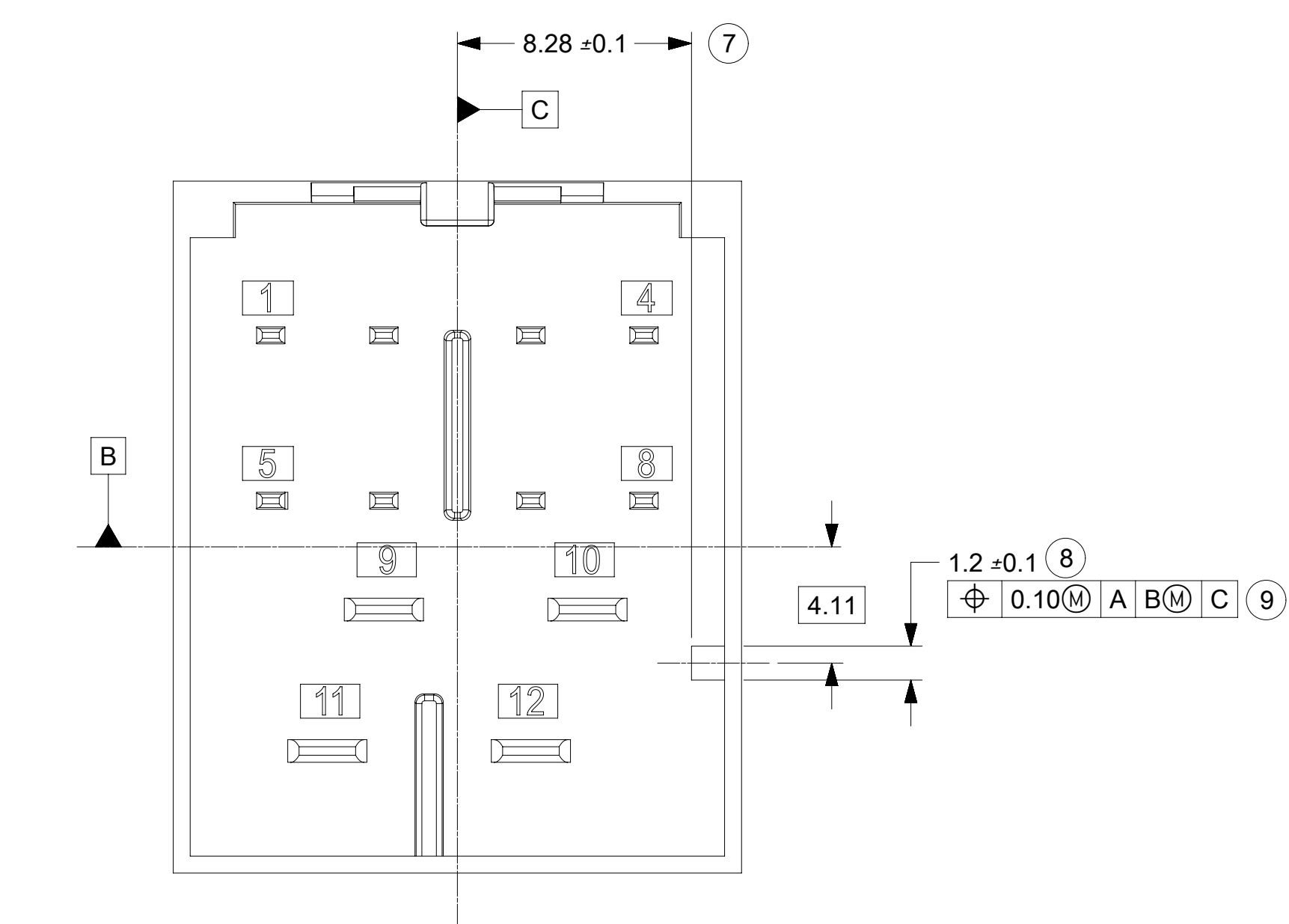
SYMBOLS	THIS DRAWING CONTAINS INFORMATION THAT IS PROPRIETARY TO MOLEX ELECTRONIC TECHNOLOGIES, LLC AND SHOULD NOT BE USED WITHOUT WRITTEN PERMISSION		
	DIMENSION UNITS	SCALE	CURRENT REV DESC: SEE TABLE
▽ = 0	mm		
▽ = 0	GENERAL TOLERANCES (UNLESS SPECIFIED)		
▽ = 0	ANGULAR TOL	± 3.0°	
▽ = 0	4 PLACES	±	EC NO: 622293
▽ = 0	3 PLACES	±	DRWN: HTGU002 2019/08/13
▽ = 0	2 PLACES	± 0.3	CHK'D: JCONDON 2019/08/13
▽ = 0	1 PLACE	± 0.3	APPR: JCONDON 2019/08/13
▽ = 0	0 PLACES	± 0.3	INITIAL REVISION:
▽ = 0	DRAFT WHERE APPLICABLE MUST REMAIN WITHIN DIMENSIONS		DRWN: VYARAPPA 2017/02/07
▽ = 0	THIRD ANGLE PROJECTION		APPR: KDEKOSKI 2017/03/23
▽ = 0	DRAWING	SERIES	
	D-SIZE	160026	
DOCUMENT NUMBER		DOC TYPE	DOC PART
SD-160026-0001		PSD	000
REVISION		B2	
MATERIAL NUMBER		CUSTOMER	
SEE CHART		GENERAL MARKET	
SHEET NUMBER		2 OF 2	



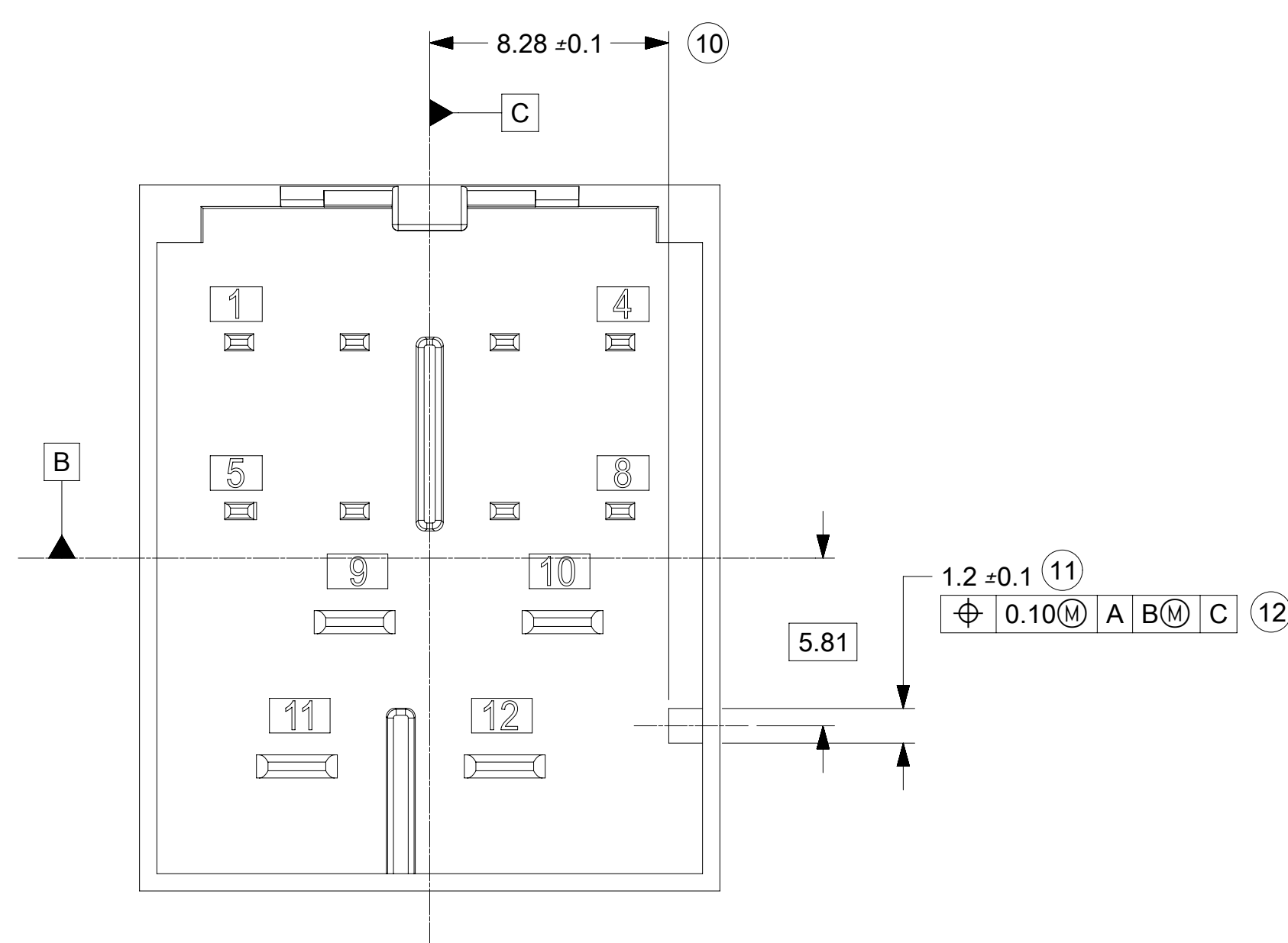
INTERFACE KEY #1
MATING CONNECTOR : BLACK



INTERFACE KEY #2
MATING CONNECTOR : LT GREEN B



INTERFACE KEY #3
MATING CONNECTOR : LT PURPLE



INTERFACE KEY #4
MATING CONNECTOR : LT GRAY

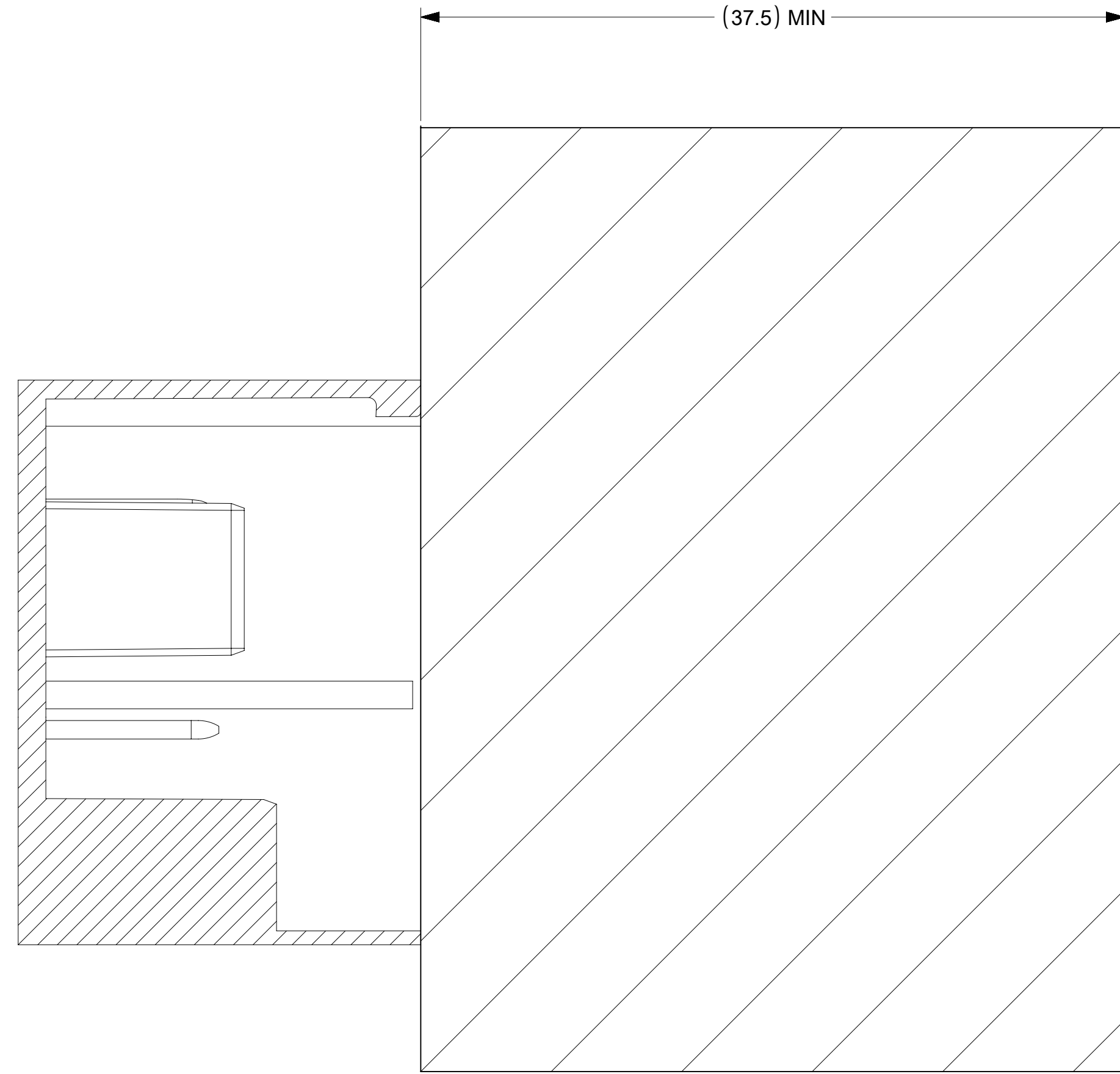
NOTES: VALID UNLESS OTHERWISE SPECIFIED

1. DESIGN - MATERIALS:
 - a. RESIN MATERIAL : PBT+GF30 OR SPS+GF30 OR EQUIVALENT
 - b. PIN/BLADE MATERIAL : ACCORDING TO USCAR DRAWING EWCAP-001 NOTE B2
 - c. PLATING: ACCORDING TO USCAR DRAWING EWCAP-001 TIN REFLOW WITH UNDERPLATE
 - d. PIN TIPS ACCORDING TO USCAR DRAWING EWCAP-001 (120-T002 & 280-T001)
 - e. DEVIATION TO EWCAP-001 ACCEPTABLE IF PERFORMANCE (ELECTRICAL/MECHANICAL) IS SHOWN TO BE EQUAL OR BETTER AS REQUIRED BY VALIDATION TESTING.
 1. DEVIATION TO TIN PLATING THICKNESS AS NECESSARY TO MEET MATING FORCE AND ALL VALIDATION REQUIREMENTS
2. DRAWING - GEOMETRY:
 - a. ALL GRAPHIC DATA IS BASIC (NO TOLERANCE) AND MUST BE TAKEN FROM THE DATA FILE AT ITS LATEST REVISION.
 - b. GEOMETRIC DIMENSIONS AND TOLERANCES PER ASME Y14.5M-2009.
 - c. GENERAL TOLERANCES:
 - LINEAR : PER DIN 16901 LINEAR CODE B FOR PRECISION ENGINEERING
 - ANGULAR : ±3°
 - d. EDGES AND UNDIMENSIONED DETAILS PER ISO13715
 - e. CORNERS SHOW AS SHARP TO BE R 0.2 MAX.
 - f. LETTERS SHALL BE 0.15MAX RAISED IN 0.25 MAX RECESSED PAD. THIS INCLUDES RECYCLING CODE, CAVITY ID, VENDOR IDENTIFICATION, AND CUSTOMER MATERIAL NUMBER. (for small parts : LETTERING SHALL BE 0.10 MAX RAISED IN 0.15 MAX RECESS PAD)
3. DESIGN - MANUFACTURING:
 - a. DRAFT TO BE WITHIN TOLERANCE.

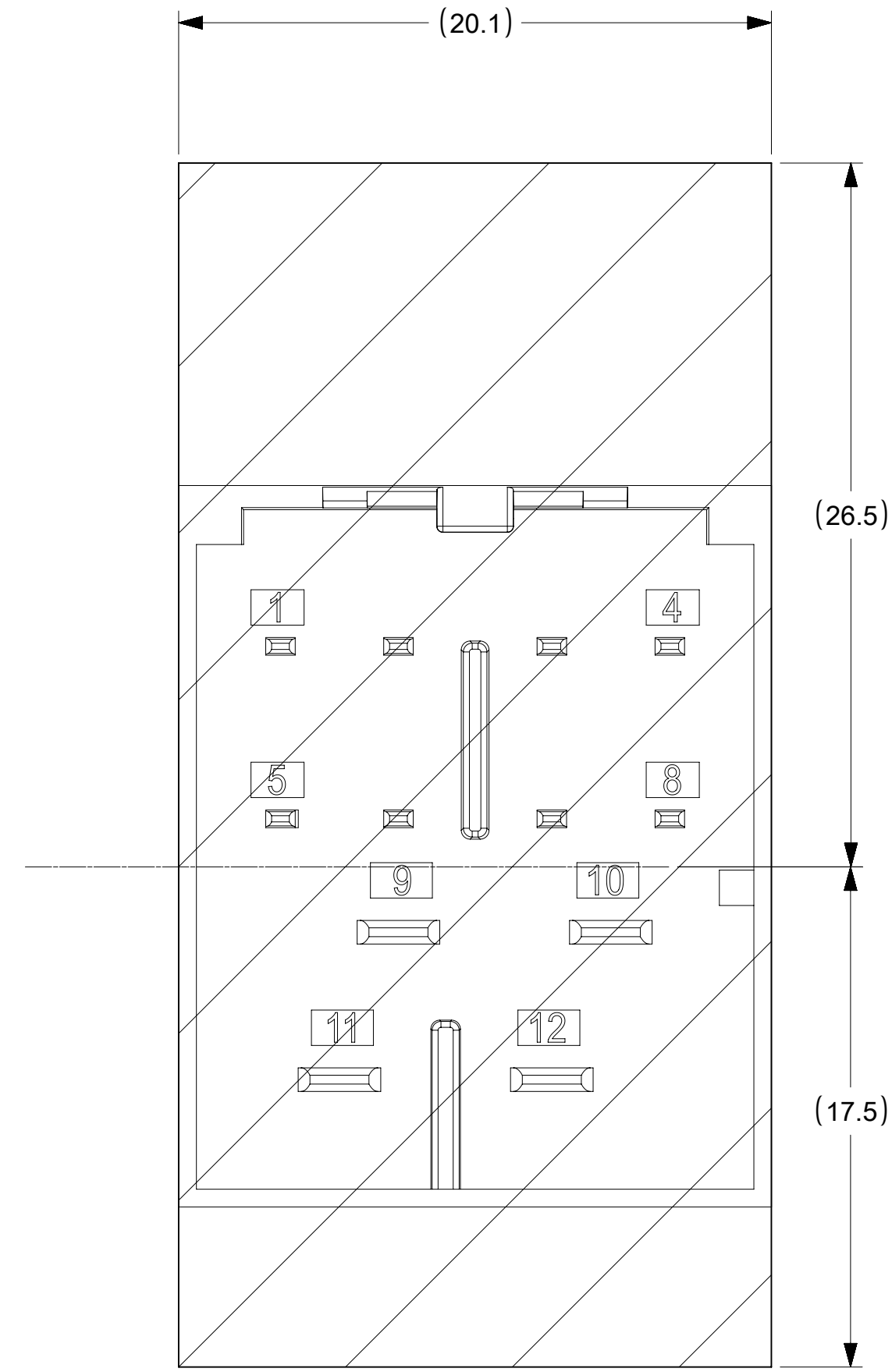
C	ADDED 2.8MM BLADE LENGTH VARIANT FOR MATE FORCE REQUIREMENT ADDED NOTE 1.e.1 CHANGE RECORD: 626144 JPATE 10/22/2019
B1	ADDED BALLOONS JCONDON 07/31/2018
B	REMOVED 0.2MM FROM CONNECTOR LOCK TAB FEATURE
A3	DRAWING CLEANUP
A2	ADDED CIRCUIT IDs
A1	ADDED NOTE 1e, MKOWALSKY 7/7/2017
7	GEOMETRY UPDATED, SPEMMARAJU 02/18/2016
6	UAU2015-1446 , SAP#10681629 , JCONDON 03/25/2015

SYMBOLS	THIS DRAWING CONTAINS INFORMATION THAT IS PROPRIETARY TO MOLEX ELECTRONIC TECHNOLOGIES, LLC AND SHOULD NOT BE USED WITHOUT WRITTEN PERMISSION	
	DIMENSION UNITS	SCALE
▽ = 0	mm	CURRENT REV DESC: ADDED 2.8MM BLADE LENGTH VARIANT FOR MATE FORCE REQUIREMENT ADDED NOTE 1.E.1
▽ = 0	GENERAL TOLERANCES (UNLESS SPECIFIED)	
▽ = 0	ANGULAR TOL ± °	EC NO: 626144
▽ = 0	4 PLACES ±	DRWN: JCONDON 2019/10/08
▽ = 0	3 PLACES ±	CHK'D: DLANGOLF 2019/10/22
▽ = 0	2 PLACES ±	APPR: JCONDON 2019/10/23
▽ = 0	1 PLACE ±	INITIAL REVISION:
▽ = 0	0 PLACES ±	DRWN: SPEMMARAJU 2015/10/27
▽ = 0	DRAFT WHERE APPLICABLE MUST REMAIN WITHIN DIMENSIONS	APPR: KDEKOSKI 2016/03/24
▽ = 0	THIRD ANGLE PROJECTION	DRAWING SERIES
▽ = 0	D-DRAWING	D-SIZE 160026
DOCUMENT NUMBER		DOC TYPE DOC PART REVISION
SD-160026-002		PSD 000 C
MATERIAL NUMBER CUSTOMER		SHEET NUMBER
GENERAL MARKET		1 OF 3

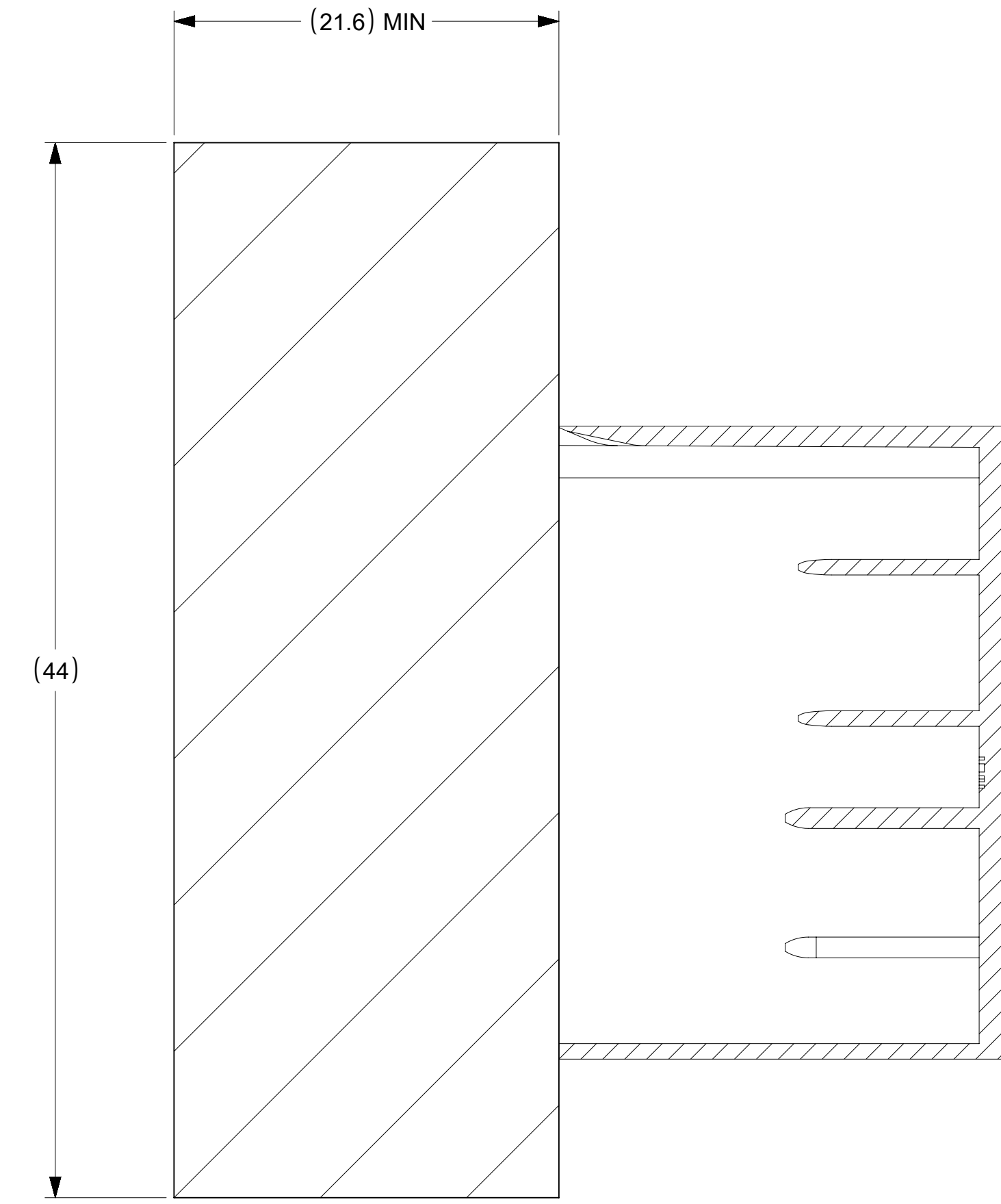
PACKAGE SPACE
FOR UNMATED
CONNECTOR



PACKAGE SPACE
FOR CONNECTOR



PACKAGE SPACE
FOR MATED
CONNECTOR
WITH COVER



THIS DRAWING CONTAINS INFORMATION THAT IS PROPRIETARY TO MOLEX ELECTRONIC TECHNOLOGIES, LLC AND SHOULD NOT BE USED WITHOUT WRITTEN PERMISSION										
SYMBOLS		DIMENSION UNITS	SCALE	CURRENT REV DESC: ADDED 2.8MM BLADE LENGTH VARIANT FOR MATE FORCE REQUIREMENT ADDED NOTE 1.E.1						
= 0		mm		GENERAL TOLERANCES (UNLESS SPECIFIED)						
= 0		ANGULAR TOL ±		EC NO: 626144			12WAY STAK50H INTERFACE DRAWING			
= 0		4 PLACES		DRWN: JCONDON 2019/10/08			PRODUCT CUSTOMER DRAWING			
= 0		3 PLACES		CHK'D: DLANGOLF 2019/10/22			DOCUMENT NUMBER			
= 0		2 PLACES		APPR: JCONDON 2019/10/23			DOC TYPE			
= 0		1 PLACE		INITIAL REVISION:			DOC PART			
= 0		0 PLACES		DRWN: SPEMMARAJU 2015/10/27			REVISION			
= 0		DRAFT WHERE APPLICABLE MUST REMAIN WITHIN DIMENSIONS		APPR: KDEKOSKI 2016/03/24			SD-160026-002			
= 0		THIRD ANGLE PROJECTION		DRAWING			PSD 000 C			
= 0		D-DRAWING		SERIES			GENERAL MARKET			
= 0		DRAFT WHERE APPLICABLE MUST REMAIN WITHIN DIMENSIONS		D-SIZE 160026			SHEET NUMBER			
= 0		DRAFT WHERE APPLICABLE MUST REMAIN WITHIN DIMENSIONS		D-SIZE 160026			3 OF 3			