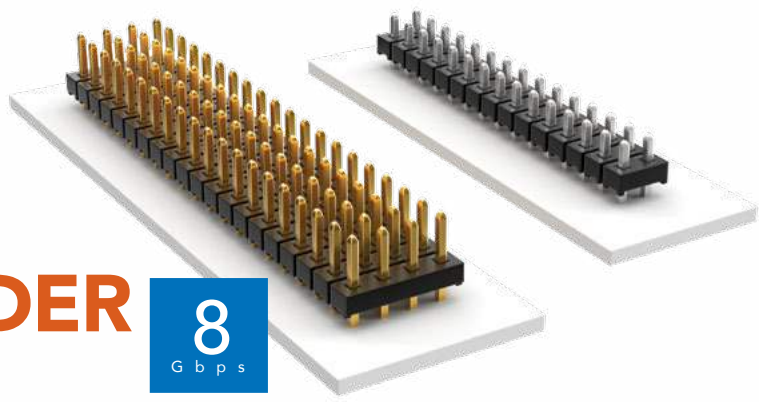


# THROUGH-HOLE LOW-PROFILE HEADER



(2.00 mm) .0787" PITCH • TMM SERIES

## TMM

**Board Mates:**  
CLT, SQT, SQW, ESQT,  
TLE, SMM, MMS

**Cable Mates:**  
TCSD

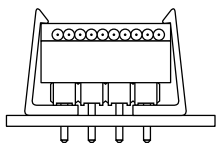
## SPECIFICATIONS

**Insulator Material:**  
Black Liquid Crystal Polymer  
**Terminal Material:**  
Phosphor Bronze  
**Plating:**  
Sn or Au over  
50 μ" (1.27 μm) Ni  
**Current Rating (SMM/TMM):**  
3.2 A per row  
(2 pins powered)  
**Operating Temp Range:**  
-55 °C to +105 °C with Tin;  
-55 °C to +125 °C with Gold  
**Voltage Rating:**  
281 VAC mated with SQW;  
250 VAC mated with SQT

## PROCESSING

**Lead-Free Solderable:**  
Yes

## APPLICATION



Retention Clip Option (-RC)

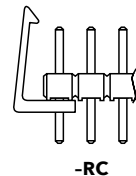
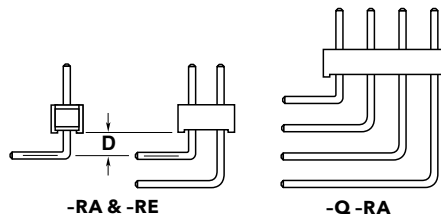
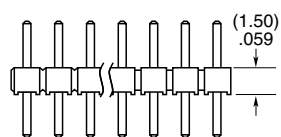
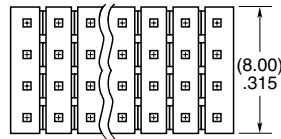
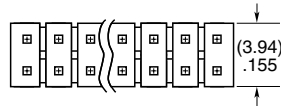
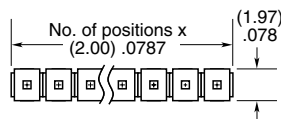
## ALSO AVAILABLE

Other plating  
(MOQ Required)

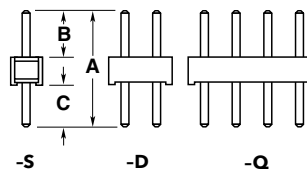


**Note:**  
Some lengths, styles and  
options are non-standard,  
non-returnable.

TMM	1	NO. PINS PER ROW	LEAD STYLE	PLATING OPTION	ROW OPTION	OTHER OPTION
		02 thru 50	Specify LEAD STYLE from chart	<b>-F</b> = Gold flash on post, Matte Tin on tail  <b>-L</b> = 10 μ" (0.25 μm) Gold on post, Matte Tin on tail  <b>-S</b> = 30 μ" (0.76 μm) Gold on post, Matte Tin on tail  <b>-T</b> = Matte Tin	<b>-S</b> = Single Row  <b>-D</b> = Double Row  <b>-Q</b> = Four Row	<b>-RA &amp; -RE</b> = Right-angle (Lead Style -01 only) (2 positions minimum, -Q row)  <b>-RC</b> = Retention Clip (Mates with TCSD) (Double row only, 4 positions minimum, only available -06 lead style)  <b>-"XXX"</b> = Polarized Position (Specify position of omitted pin)



OPTION	D
-RA	(1.27) .050
-RE	(3.56) .140



LEAD STYLE	A	B	C
-01		(3.20) .126	(3.50) .138
-02	(8.20) .323	(3.70) .146	(3.00) .118
-03		(4.00) .158	(2.70) .106
-04	(5.69) .224	(1.91) .075	(2.29) .090
-05	(5.43) .214	(1.65) .065	
-06	(9.58) .377	(3.20) .126	(4.88) .192