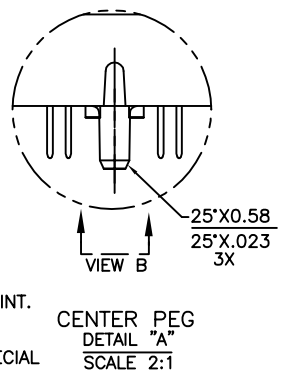


NOTE:

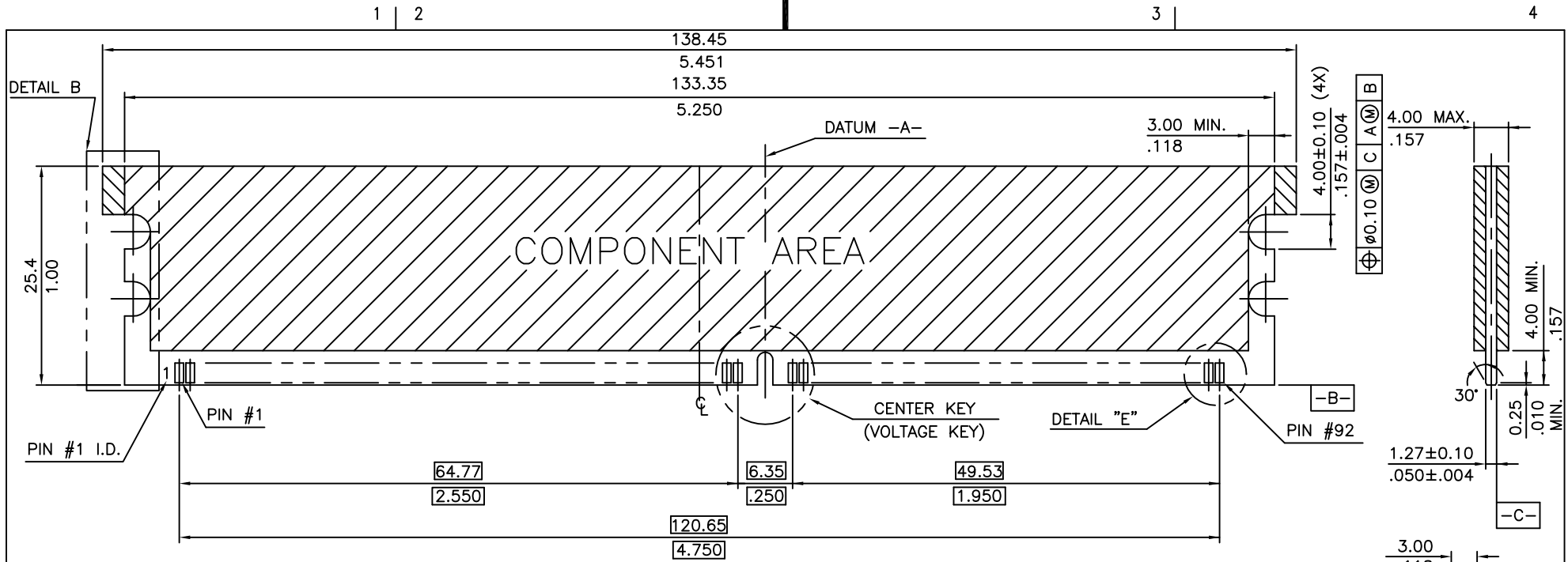
1. MATERIAL:
HOUSING: NYLON 66 OR APPROVED EQUIVALENT, GLASS FILLED UL94V-0 RATED, COLOR BLACK.
EJECTOR: NYLON 66 OR APPROVED EQUIVALENT, GLASS FILLED UL94V-0 RATED, COLOR NATURAL.
TERMINAL: COPPER ALLOY.
2. FCI LOGO TO BE APPROXIMATELY LOCATED AS SHOWN ON PRINT.
3. PRODUCT SPECIFICATION: GS-12-146
4. THE DATE CODE IS SHOWN "MM-DD-YY" FOR CUSTOMER SPECIAL REQUEST.
5. THIS PRODUCT MEETS EUROPEAN UNION DIRECTIVES AND OTHER COUNTRY REGULATIONS AS DESCRIBED IN GS-22-008.
6. THE HOUSING WILL WITH STAND EXPOSURE TO 260° PEAK TEMPERATURE FOR 10 SECONDS IN A WAVE SOLDER APPLICATION.



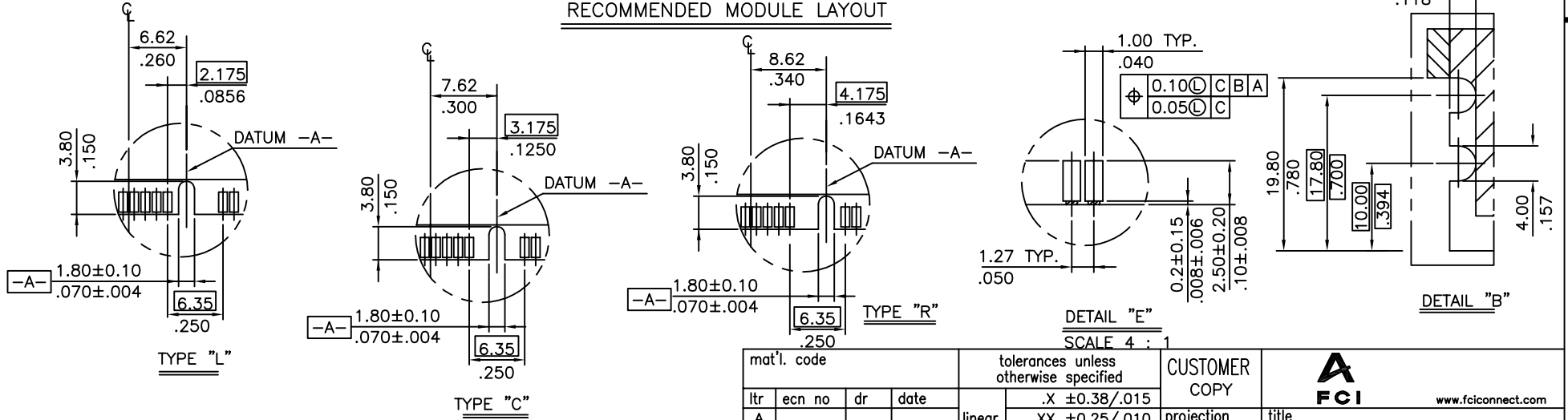
mat'l. code				tolerances unless otherwise specified		CUSTOMER COPY		FCI <small>www.fciconnect.com</small>	
ltr	ecn no	dr	date	linear	.X ±0.38/.015	projection	title		
A	T20297	M W	10/04/02		.XX ±0.25/.010		DDR 184P .050" 1-ROW, V/T ASS'Y PLASTIC POST		
B	T03-0179	M W	05/16/03	angles	.XXX ±0.15/.005		product family DDR code		
C	T03-0435	M W	10/01/03		0° ±2'		size dwg no		
D	pg05-0466	K W	11/15/05	dr	MAGGIE WU 04/12/02	MM	10002394		TWN
				enr	JEFF.HSIEH 04/12/02	scale	A4		sheet
				chr	JEFF.HSIEH 04/12/02	1:1	1 of 3		
				appd	JENN TSAO 04/12/02				
sheet index	revision sheet	D	A	B					
		1	2	3					

Tous droits strictement reserves. Reproduction ou communication a des tiers interdite sous quelque forme que ce soit sans autorisation ecrite du propriétaire. Propriete de c FCI. Droits de reproduction FCI.

All rights strictly reserved. Reproduction or issue to third parties in any form whatever is not permitted without written authority from the proprietor. Property of FCI. Copyright FCI.



RECOMMENDED MODULE LAYOUT

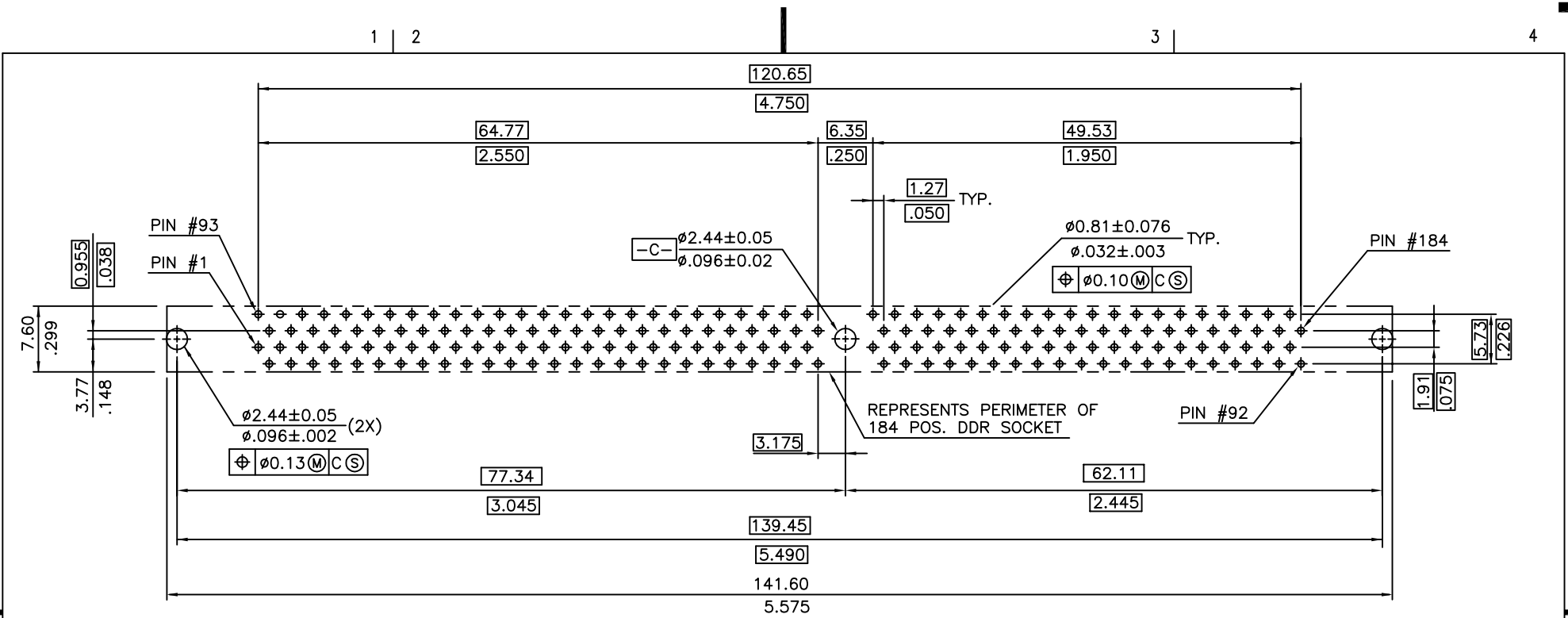


TYPE "R"	3.3 VOLT.
TYPE "L"	2.5 VOLT.
TYPE "C"	1.8 VOLT.
CENTER KEY	DESCRIPTION

mat'l. code		tolerances unless otherwise specified		CUSTOMER COPY		FCI www.fciconnect.com		
ltr	ecn no	dr	date	.X ±0.38/.015	projection	title		
A				.XX ±0.25/.010		DDR 184P .050" 1-ROW, V/T ASS'Y PLASTIC POST		
				.XXX ±0.15/.005		product family	DDR	code
				0° ±2'	MM	size	dwg no	TWN
		dr	MAGGIE WU 04/12/02		scale	10002394		sheet
		enr	JEFF.HSIEH 04/12/02		1.5:1			2 of
		chr	JEFF.HSIEH 04/12/02					
		appd	JENN TSAO 04/12/02					
sheet index	revision sheet					cage code		

Tous droits strictement réservés. Reproduction ou communication a des tiers interdite sous quelque forme que ce soit sans autorisation écrite du propriétaire. Propriete de c FCI. Droits de reproduction FCI.

All rights strictly reserved. Reproduction or issue to third parties in any form whatever is not permitted without written authority from the proprietor. Property of FCI. Copyright FCI.



DDR ASSEMBLY PART NUMBER
10002394 - □ □ □ □

RECOMMENDED CIRCUIT BOARD HOLE LAYOUT

STYLE

1 : FOR 3.3 VOLT.
2 : FOR 2.5 VOLT.
3 : FOR 1.8 VOLT.

RESERVED

0

PLATING

CODE	CONTACT	SOLDERTAIL	UNDERPLATE	CODE	CONTACT	SOLDERTAIL	UNDERPLATE
2	15µ"(0.38µm) MIN. GOLD			7LF	15µ"(0.38µm) MIN. GOLD		
3	30µ"(0.76µm) MIN. GOLD	100µ"(2.54µm) MIN. TIN/LEAD	50µ" (1.27µm) MIN. NICKEL OVERALL	8LF	30µ"(0.76µm) MIN. GOLD	100µ"(2.54µm) MIN. 100% TIN	50µ" (1.27µm) MIN. NICKEL OVERALL
4	1µ"MIN.GOLD FLASH			9LF	1µ"MIN.GOLD FLASH		

TAIL LENGTH

CODE	DIM. "B"	TOLERANCE
1	2.29 .090	±0.25 ±.01
2	2.79 .110	±0.25 ±.01
3	2.67 .105	±0.25 ±.01
4	3.05 .120	±0.25 ±.01

COLOR OF HOUSING AND EJECTOR

0 : BLACK HOUSING + IVORY EJECTOR

mat'l. code				tolerances unless otherwise specified				CUSTOMER COPY		 www.fciconnect.com	
ltr	ecn no	dr	date	linear	.X ±0.38/.015	projection		title			
B				angles	.XX ±0.25/.010			DDR 184P .050" 1-ROW, V/T ASS'Y PLASTIC POST			
				dr	.XXX ±0.15/.005			product family		code	
				enrg	0° ±2'	MM		DDR		TWN	
				chr	MAGGIE WU 04/12/02	scale		size		sheet	
				appd	JEFF.HSIEH 04/12/02	1.5:1		dwg no		3 of	
					JEFF.HSIEH 04/12/02			10002394			
sheet index	revision sheet				JENN TSAO 04/12/02						