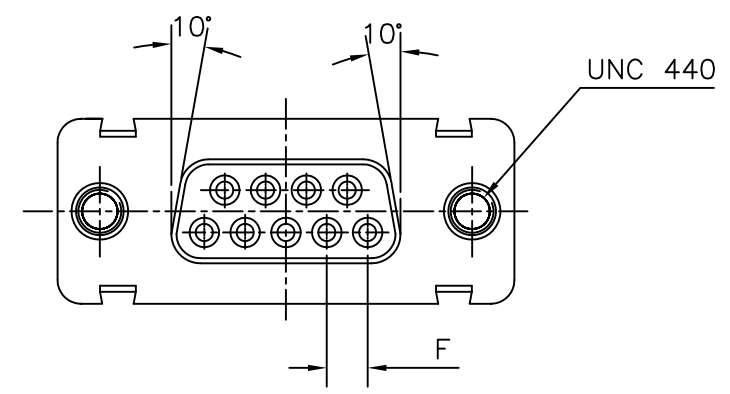
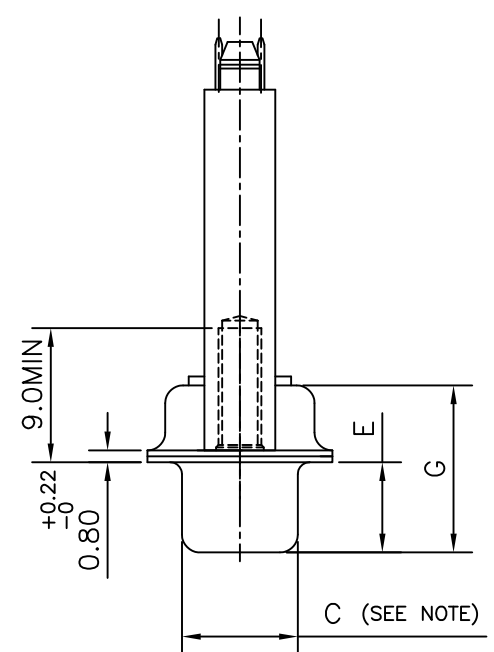
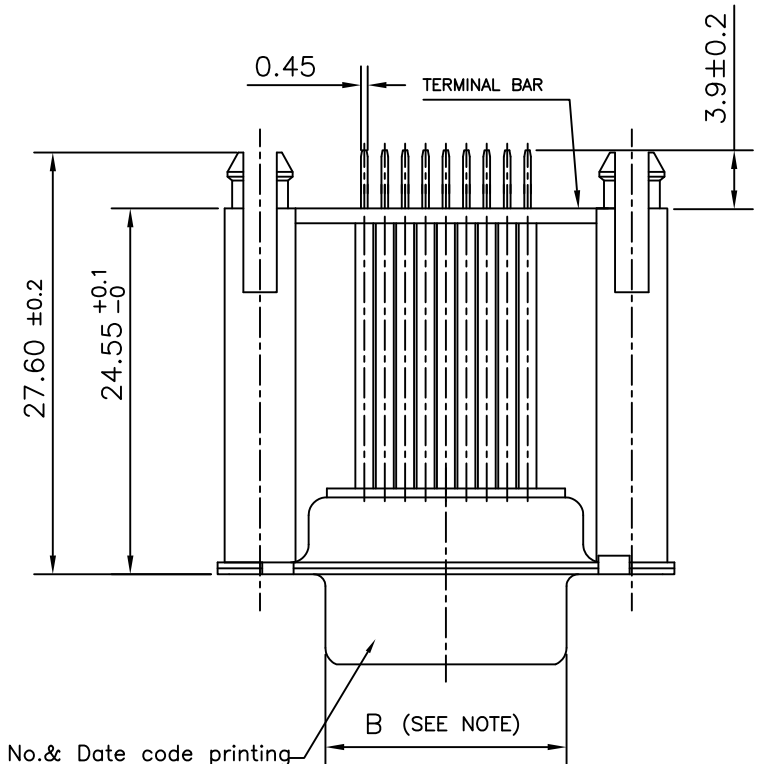
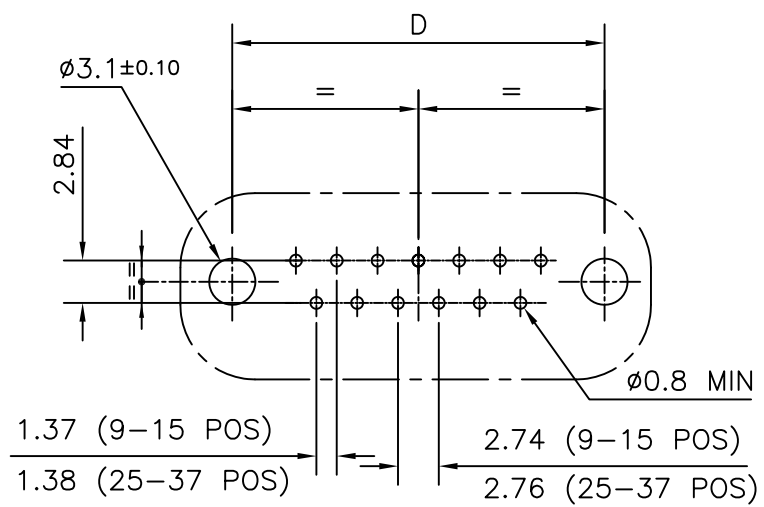
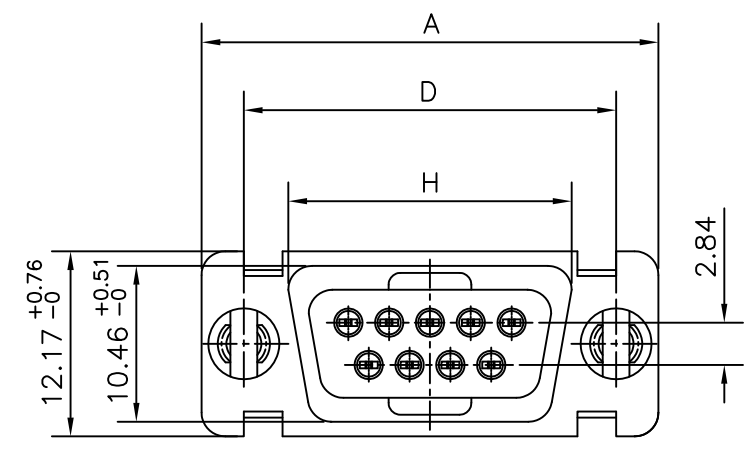




FCIconnect.com

Copyright FCI



NOTE - 1. INSIDE DIMENSIONS OF MALE AND OUT SIDE DIMENSIONS OF THE FEMALE CONNECTOR.

37	P	68.94	55.30	8.23	63.50	5.85	2.76	11.09	57.45
	S	68.94	54.71	7.77	63.50	6.05	2.76	11.21	57.45
25	P	52.65	38.84	8.23	47.04	5.85	2.76	11.07	41.02
	S	52.65	38.25	7.77	47.04	6.05	2.76	11.21	41.02
15	P	38.76	25.12	8.23	33.32	5.85	2.74	10.99	27.25
	S	38.76	24.54	7.77	33.32	6.05	2.74	11.21	27.25
09	P	30.43	16.79	8.23	24.99	5.85	2.74	10.99	19.02
	S	30.43	16.21	7.77	24.99	6.05	2.74	11.21	19.02
SHELL SIZE	A	+0.76 0	+0.25 0	C +0.25 0	D +0.12 0	E +0.15 0	F	G Max.	H +0.51 0

**TECHNICAL SPECIFICATIONS**

- SHELLS : TIN / ZINC PLATED STEEL.
- INSULATOR MATERIAL : SELF EXTINGUISHING THERMOPLASTIC- TO UL CLASS 94 V0
- THE HOUSING WILL WITHSTAND EXPOSURE TO 260-265°C IF WE USE PROTECTIVE ADHESIVE (type Kapton or Teflon) OR PROTECTIVE METALLIC DEVICE
- CONTACTS DIA ON ACTIVE AREA :  $\phi 1$  MM.
- CONTACT MATERIAL : COPPER ALLOY
- CONTACT PLATING : GOLD / GXT OVER NICKEL(ACTIVE ZONE)
- FOR LEAD FREE PLATING : TIN OVER NICKEL(TERMINATION ZONE)
- 2 MIN.MATTE TIN TOP OVER
- 1.27 MIN.NICKEL UNDER PLATE(ON TERMINATION ZONE)
- OPERATING TEMPERATURE : -55°C +125°C
- OPERATING CURRENT : 5 A PER CONTACT
- CONTACT RESISTANCE :  $\leq 25m\Omega$
- INSULATION RESISTANCE :  $\geq 5000 M\Omega$
- TEST VOLTAGE : 1000 V.r.m.s
- MECHANICAL ENDURANCE : 500 MATINGS .
- DAMP HEAT : 21 DAYS.
- TORQUE : 0.6~0.7 N-m

SERIES D E O 09 S 3 65 GT 102 LF LEAD FREE

SHELL SIZE E,A,B,C SPECIAL CODE SPL. BOARD LOCK

NO.OF CONTACTS 09,15,25,37 CONTACT PLATING 0.76μ GOLD / GXT

CONTACTS P - PIN S - SOCKET

"This LF product meets European Union Directives and other country regulations as described in GS-22-008"

The housing will withstand exposure to 260°C peak temperature for 3.5 seconds in a wave solder application with a 1.6mm minimum thick circuit board.

Packaging as per GS-14-920

mat'l. code		surface		tolerance		projection		product family	
SEE.NOTES		ISO 1302 ✓		ISO 406 ISO 1101				title	
		tolerances unless otherwise specified				MM		D SUB FEMALE S/S CONNECTOR (WITH BOARD LOCK)	
		angles		linear		scale -			
		dr		Mini K Vandanath		2003/02/10		dwg no	
		engr		George V Joseph		2003/02/10		sheet 1 of 1	
		chr		Abhilash M R		2011-01-06		size	
		appd		Sudhir Varma		2011-01-06		A3	
sheet index		revision		F				type	
sheet		1						Product Customer Drawing	