

ATLANTIC VERSION TERMINATOR INTERFACE ADAPTER	PART NUMBER	REVISION	DESCRIPTION	FEED TYPE	
	2266057-1	B	FINE CRIMP HEIGHT ADJUST	MECHANICAL	SUPERSEDED BY 5-2151345-1
	2266057-2	B	FINE CRIMP HEIGHT ADJUST	PNEUMATIC	SUPERSEDED BY 5-2151345-2
	2266057-5	B	FINE CRIMP HEIGHT ADJUST	SERVO LATCH PLATE ⁴	OBSOLETE
	2266057-6	B	NON-CRIMP HEIGHT ADJUST	SERVO LATCH PLATE ⁴	OBSOLETE
	2266057-7	B	FINE CRIMP HEIGHT ADJUST	NONE	OBSOLETE
	7-2266057-7	A	CRIMP TOOLING KIT	-	-

APPLICATOR DATA		
CRIMP	SIZE	TYPE
WIRE	2.54 mm [.100]	F
INSUL	4.30 mm [.170]	O

APPLICATOR INSTRUCTIONS
408-10389

TERMINAL DATA: TE TERMINAL		TE CRIMP SPECIFICATION	
TERMINAL NAME: 1.50mm CONTACT SOCKET			
WIRE STRIP LENGTH		INSULATION DIAMETER RANGE	
5.20-5.80 mm [.205-.228 IN]		Ø2.20-3.00 mm [.087-.118 IN]	
TERMINAL APPLICATION SPECIFICATION		TERMINAL APPLICATION SPECIFICATION	
(A)114-18020		(B)114-18040	

TERMINALS APPLIED			
TE TERMINAL	TE TERMINAL	TE SEAL	TE SEAL
(A) 929968-1	(A) 929990-1	(B) 828921-1	
(A) 929968-7	(B) 929990-3	(B) 828904-1	
(A) 929975-1	(B) 929990-4	(B) 828904-2	
(A) 929975-4	(B) 929990-7	(B) 828904-3	
(A) 929975-7	(B) 1-929990-0	(B) 828905-1	
(A) 929975-8	(B) 1703014-1		
(B) 1703050-1	(B) 1703014-4		
(B) 1-1719188-0			

WIRE SIZE	CRIMP HEIGHT mm [INCH]	CRIMP HEIGHT REFERENCE SETTING
2.50mm2	1.97+/-0.03 [.078+/- .001]	3.5
2.00mm2	1.82+/-0.03 [.072+/- .001]	5.2
1.50mm2	1.67+/-0.03 [.066+/- .001]	6.9
16 AWG	1.58+/-0.03 [.062+/- .001]	8.2

- 1. RECOMMENDED SPARE PARTS
- 2. GREASE BEARING SURFACES LIGHTLY
- 3. LUBRICATE DAILY PER THE APPLICATOR INSTRUCTION SHEET SUPPLIED WITH THE APPLICATOR.
- 4. APPLICATOR SPECIFIC DATA TO BE ENTERED INTO BLANK MEMORY CHIP AT ASSEMBLY. SEE BELOW FOR PART NUMBER:
 - MECHANICAL FEED WITH "SMART APPLICATOR" CONVERSION: 8-2266057-4
 - PNEUMATIC FEED WITH "SMART APPLICATOR" CONVERSION: 8-2266057-4
 - SERVO FEED WITH "FINE CRIMP HEIGHT ADJUST": 8-2266057-5
 - SERVO FEED WITH "NON-CRIMP HEIGHT ADJUST": 8-2266057-6
- 5. ADJUSTMENT OF THE STRIPPER MAY BE REQUIRED WHEN MOVING THE APPLICATOR BETWEEN BENCH AND LEADMAKER APPLICATIONS.
- 6. APPLY PART NUMBER 1-23419-5 LOCTITE TO THREADS OF ITEMS 62 & 180. APPLY PART NUMBER 2-23419-6 LOCTITE TO THREADS OF ITEM 242. FOR -6 ONLY APPLY PART NUMBER 1-23419-5 LOCTITE TO THREADS OF ITEM 37.
- 7. GREASE THREADS, GROOVE AND O-RING ON ITEMS 35 & 252.
- 8. MAGNET, ITEM 166 MUST BE ORIENTED CORRECTLY IN ORDER TO PROPERLY ACTUATE THE COUNTER.
- 9. CRIMP HEIGHT REFERENCE SETTING WAS THE SETTING USED WHEN THE APPLICATOR WAS QUALIFIED AT THE FACTORY. ADJUSTMENT MAY BE NECESSARY WHEN RUNNING APPLICATOR IN THE FIELD.
- 10. SPARE FEED CAM STORAGE LOCATION REFER TO INSTRUCTION SHEET FOR ADDITIONAL INFORMATION.
- 11. TO CONVERT THE APPLICATOR TO A NON-CARRIER CUTTING STYLE, REMOVE ITEM 13 AND ATTACH TO THE LOCATION ON THE BACK SIDE OF THE HOUSING. REFER TO INSTRUCTION SHEET FOR ADDITIONAL INFORMATION.
- 12. WHEN ASSEMBLING -6 NON-CRIMP HEIGHT ADJUST APPLICATOR USE SHIM PACK 2119957-2 TO ALIGN APPLICATOR'S MAXIMUM WIRE CRIMP HEIGHT AT NORMAL TERMINATOR SHUT HEIGHT

*WARNING
ON INSTALLATION, SET WIRE DISC, ITEM 40 TO LARGEST WIRE SIZE SETTING. USE OF SETTINGS BELOW MINIMUM REQUIRED CRIMP HEIGHT SETTING WILL CAUSE DAMAGE TO CRIMP TOOLING.

3. INSULATION RANGE QUOTED IS THAT OF THE TERMINAL.
SEAL PN 828905 - INS. DIA RANGE IS Ø2.2-3.0mm
SEAL PN 828904 - INS. DIA RANGE IS Ø1.2-2.1mm
SEAL PN 828921 - INS. DIA RANGE IS Ø2.1-3.0mm

14. APPLY TORQ-SEAL IN ALLEN SOCKET TO FILL HOLE AFTER FLAT HD HAS BEEN ADJUSTED TO CORRECT HEIGHT AT QUALIFICATION. APPLY #1-23419-5 LOC-TITE TO THREADS.

15. THIS APPLICATOR IS SPECIFIC FOR USE IN A STRIPPER SEAL TERMINATING UNIT.

16. USE P/N 1752356-6 WHEN RUNNING TERMINAL P/N 929990-X.

ITEM NO	DESCRIPTION	ITEM NO
261	SUPPORT, TERMINAL	1752356-6
260	APPLICATOR SHIM PACK	2119957-2
252	O-RING, .676 ID, .070 DIA, MAT.	8-21084-0
250	PUSH ROD, AIR FEED	2119640-1
249	BUSHING, LCH5-12, MISUMI	2079988-1
248	FEED CAM, AIR FEED	2119641-1
247	DETENT PIN	2119798-1
246	SPRING, COMPRESSION	1-22279-3
245	RAM, AMP STYLE, SIDE FEED, NON-ADJ.	2119758-1
244	CAM, SNAIL, INSULATION ADJUSTMENT	2119082-9
ITEM NO	DESCRIPTION	ITEM NO
-77	PART NO	-7
-76	PART NO	-6
-75	PART NO	-5
-74	PART NO	-4
-73	PART NO	-3
-72	PART NO	-2
-71	PART NO	-1

ATLANTIC VERSION
Shown on sheets 1 of 4 & 2 of 4
(Pacific version shown on sheets 3 of 4 & 4 of 4)

SET UP GAUGE	LOC	DIST	REVISIONS			
2119599-1	A	66	REV	DATE	BY	APPV
			A	RELEASED	01NOV2013	KH UG
			A1	ECR-13-018014	18NOV2013	KH TE
			B	ECR-17-011866	15AUG2017	TB TE
			B1	ECR-18-011578	19JUL2018	TB TE

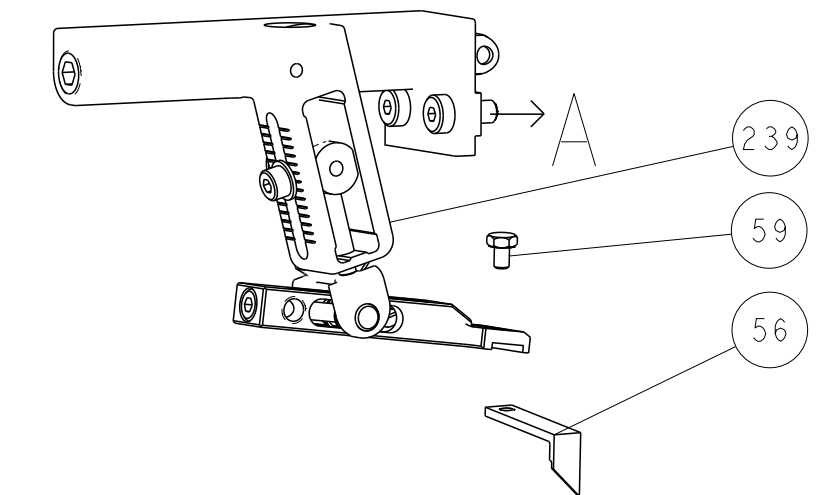
ITEM NO	DESCRIPTION	ITEM NO
243	WASHER, WAVE SPRING, CREST-TO-CREST	2079764-1
242	RETAINER, INSULATION DIAL	2119083-1
241	SCR, SKT HD CAP M3 X 4.0	7-18023-7
240	SHCS, LOW HEAD, RoHS, M5 X 16	2168400-6
239	MECHANICAL FEED ASSEMBLY	2119580-1
238	AIR FEED MODULE	2063440-1
213	TAG, IDENTIFICATION	2119740-2
198	SPACER, FEEDER	1901094-3
182	STRIPPER, SIDE FEED	4-1722335-3
181	NUT, HEX, REG, RoHS, M3.5	1-5018030-0
180	STANDOFF, HOLD-DOWN	1-1752354-9
177	PIN, SLOTTED SPRING 3.0 X 20.0	993111-1
176	SPRING, COMPRESSION	5-22280-0
175	GUIDE PIN, HOLDDOWN	1752353-3
174	GUIDE PIN, HOLDDOWN	1901680-2
172	RING, RETAIN, EXTERN, 3/16 CRESCENT	21045-3
166	MAGNET, RARE EARTH HIGH ENERGY	994969-1
164	COUNTER, MAGNETIC	994970-2
163	SPRING, FEED FINGER	240638-1
137	PIN, RETAIN, GRVD, 3/16 X .854	3-23627-7
136	HOLDER, FEED FINGER, AF	2119799-1
135	MEMORY CHIP, PROGRAMMED	SEE NOTE 4
133	SERVO FEED LATCH ASM	1633743-1
119	WASHER, FLAT, REG M4	1-18028-2
117	FEED FINGER ASSEMBLY, SF	2119944-1
82	SPACER, CRIMPER	455888-4
71	DOCUMENTATION PACKAGE	2119956-1
70	DEPRESSOR, WIRE	2119791-9
69	WASHER, SPACER	2119943-1
67	TAG, IDENTIFICATION	2119740-1
66	SCREW, DRIVE, RH, RoHS, 2 x .188	2168078-1
63	LIMITER, ADJUSTMENT BOLT	2119793-1
62	SCR, SET, SOC, CONE PNT, M3 x 4.0	992763-5
60	SCR, BHSC, RoHS (M4 X 8)	2079383-4
59	SCR, HEX HD CAP, M4 X 6.0	5-18022-5
57	SCR, FLT SKT HD CAP M3 X 10.0	985575-3
56	FEED PAWL	1338683-8
54	SHCS, LOW HEAD, RoHS, M4 X 12	2168400-1
53	SCR, SKT HD CAP, RoHS, M4 X 16	2168083-8
52	NUT, HEX, REG, RoHS, M3	5018030-1
51	BUMPER, HOLD DOWN	811242-5
50	SPACER, TONKER	690753-2
49	SCR, SKT HD CAP M4 X 6.0	18023-9
48	FEED CAM, PRE FEED	2119652-1
47	FEED CAM, POST FEED	2119653-1
46	APPLICATOR BASIC ASSEMBLY, SF	2-2119656-1
44	RAM, AMP STYLE, SIDE FEED	2119370-1
41	SCR, BHSC, RoHS (M8 X 25)	2079383-7
40	DISC, NUMBERED FA WIRE ADJUSTMENT	2119645-1
39	APPLICATOR SHIM PACK	2119957-1
38	RAM WASHER, PRECISION	1-2119644-2
37	FA HEAD, ATLANTIC STYLE	2119085-1
35	BOLT, ADJUSTMENT	2119092-1
34	SUPPORT, TERMINAL	1-1752356-7
33	SCR, BHSC, RoHS (M4 X 20)	2079383-5
32	HEX HEAD, FLANGED, M5 x 8mm LONG	2161328-1
30	SPACER, STRIP GUIDE	2-1320908-2
29	ASSEMBLY, STRIP GUIDE	2119959-1
28	SPACER, CRIMPER	455888-3
24	STRIP GUIDE	1320928-6
13	INSERT, SHEAR	2119806-1
12	SPRING, COMPRESSION	3-22280-3
11	STOP, SHEAR	1-356885-4
10	SHEAR HOLDER, FRONT	2119805-1
9	FLOATING SHEAR, FRONT	318707-1
8	ANVIL, COMBINATION .100	1-1333206-6
7	SPACER	6-240641-5
6	-	-
5	DEPRESSOR, SHEAR	2119781-5
4	BLOCK, CRIMPER SPACER	2-238011-1
3	CRIMPER, INSULATION SPECIAL	1633996-8
2	SPACER, CRIMPER	455888-6
1	CRIMPER, WIRE PREMIUM	456407-6
ITEM NO	DESCRIPTION	ITEM NO
-77	PART NO	-7
-76	PART NO	-6
-75	PART NO	-5
-74	PART NO	-4
-73	PART NO	-3
-72	PART NO	-2
-71	PART NO	-1

DIMENSIONS: mm		TOLERANCES UNLESS OTHERWISE SPECIFIED:		OWN: H. HUANG 25SEP2013		CHK: L. ZHANG 25SEP2013		APVD: W. GUO 25SEP2013		NAME: Ocean Side Feed Applicator	
0 PLC ±		1 PLC ±		2 PLC ±		3 PLC ±		4 PLC ±		RESTRICTED TO	
MATERIAL: -		FINISH: -		WEIGHT: -		SCALE: 1:2		SHEET: 1 of 4		REV: B1	

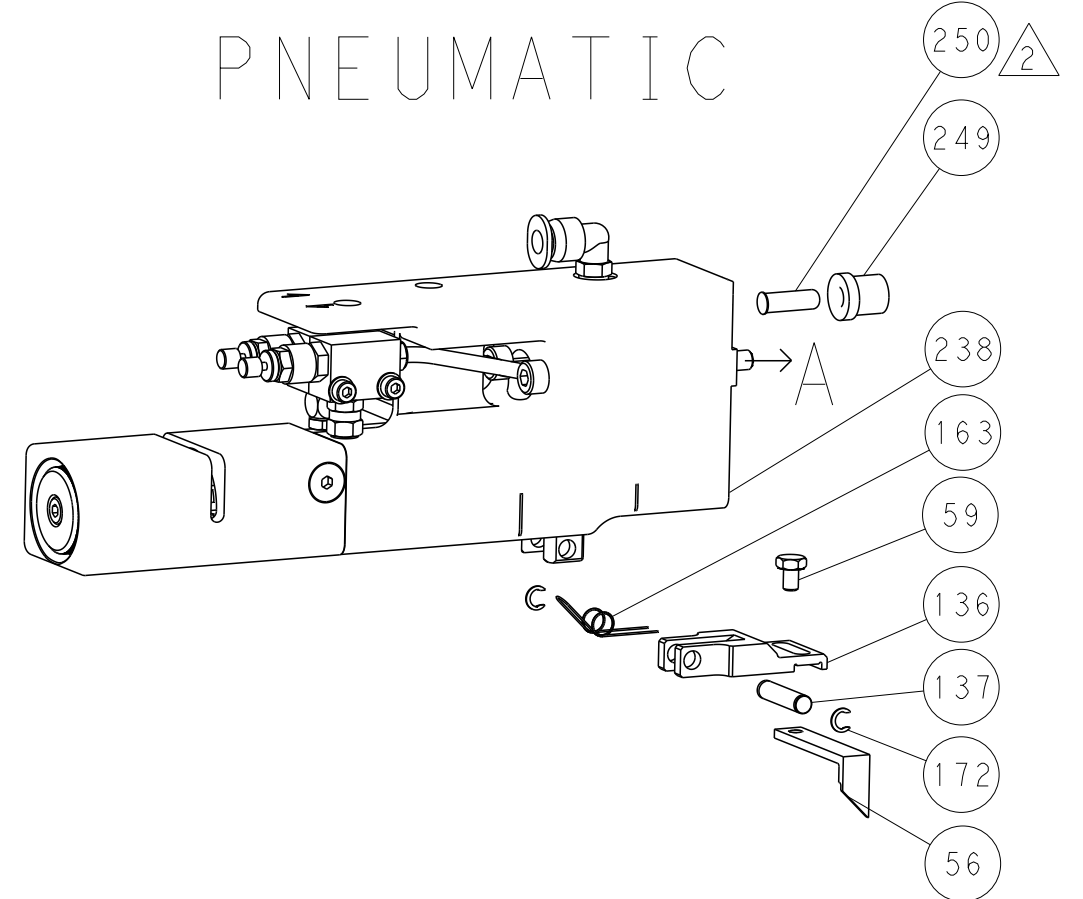
Customer Accessible Production Drawing

LOC	DIST	REVISIONS					
A	66	P	LTN	DESCRIPTION	DATE	OWN	APVD
		-		SEE SHEET 1			

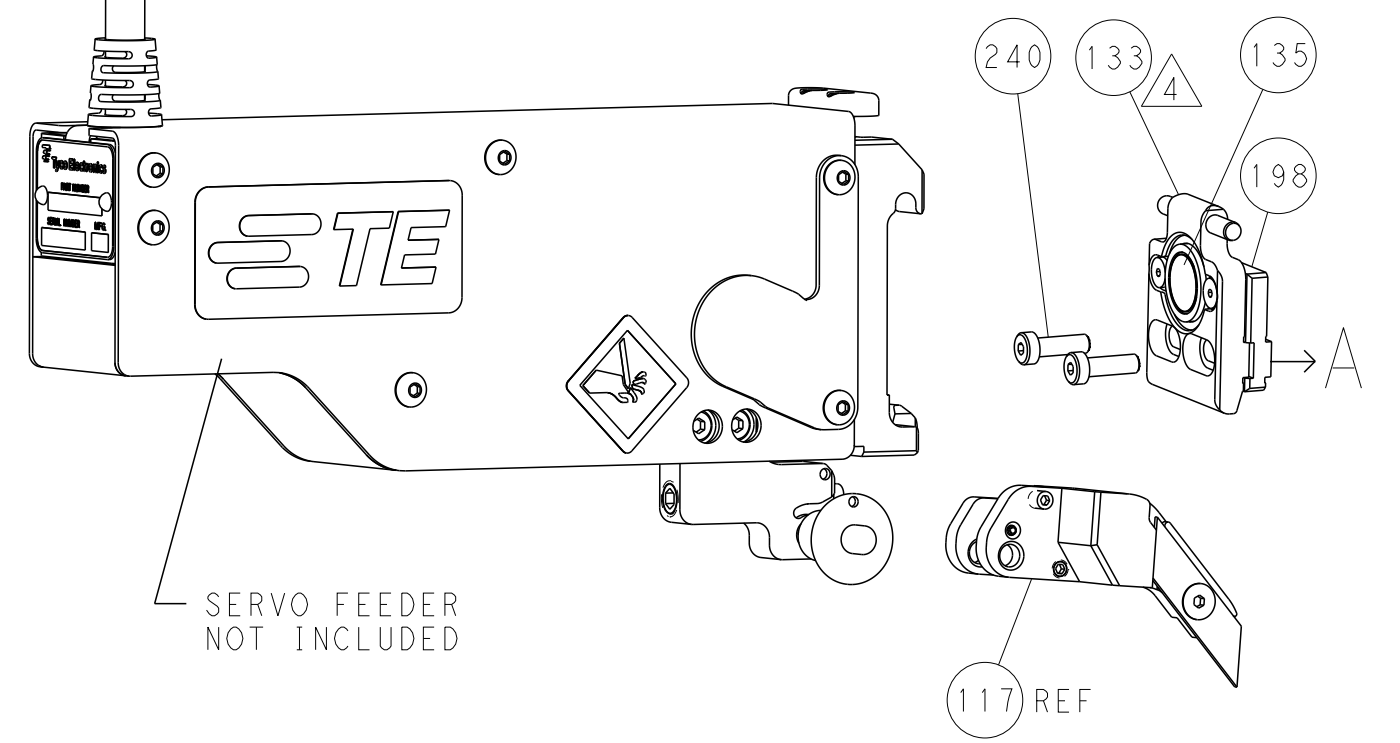
FEED TYPE MECHANICAL



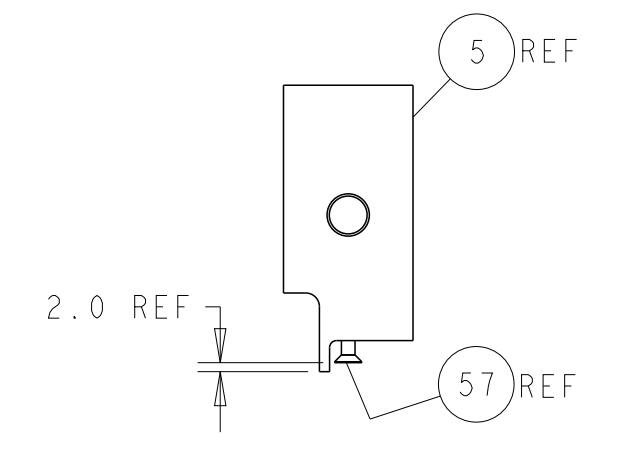
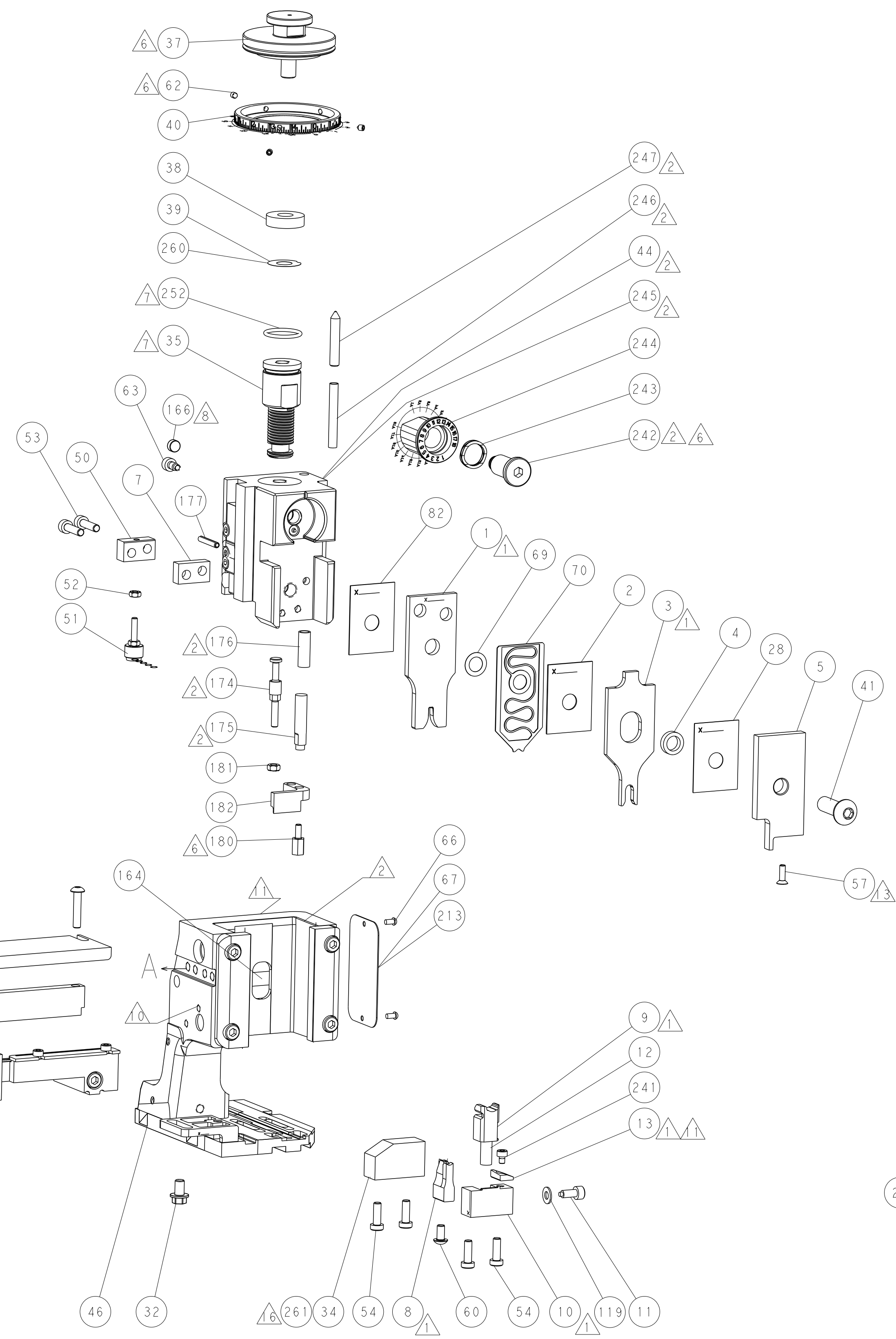
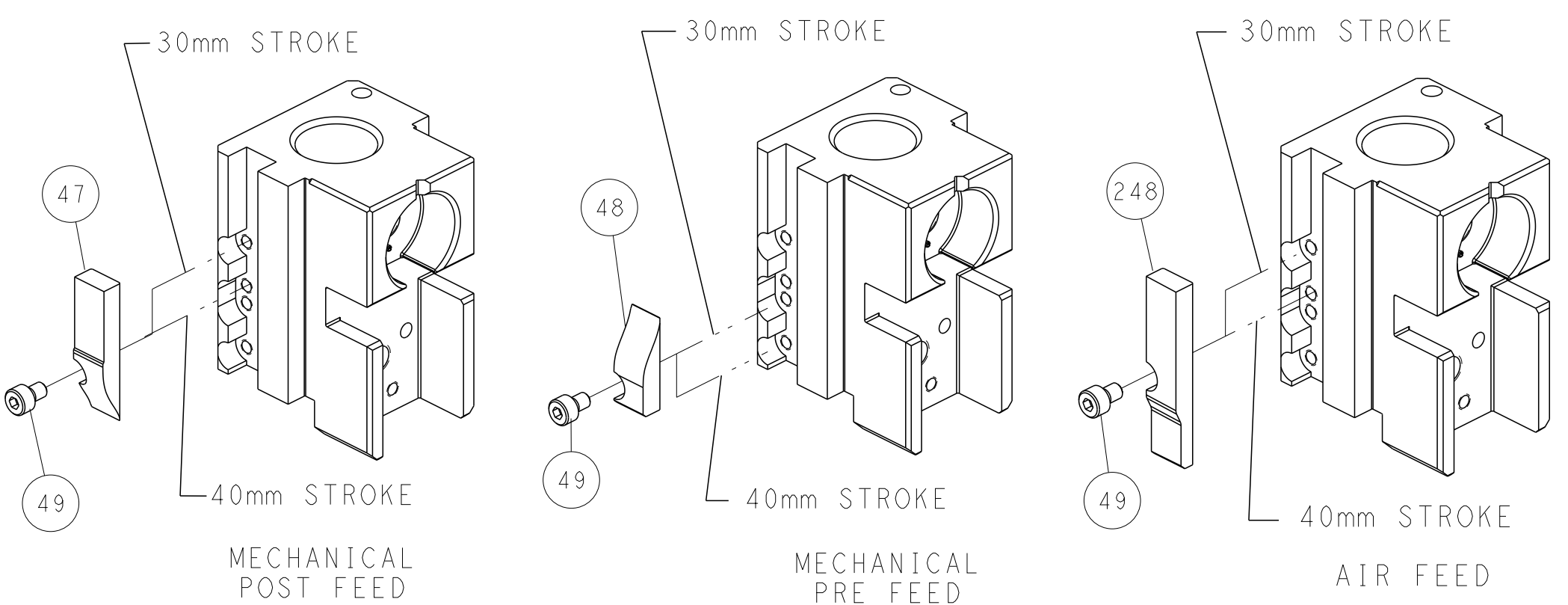
PNEUMATIC



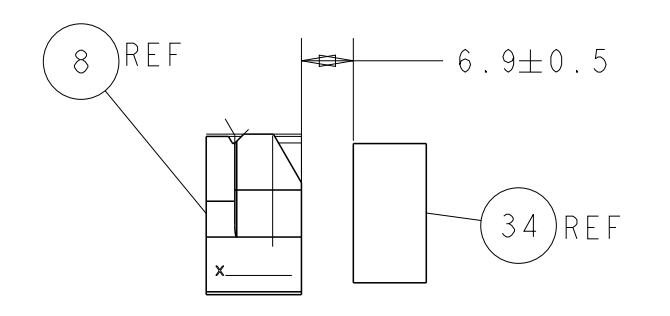
SERVO LATCH PLATE



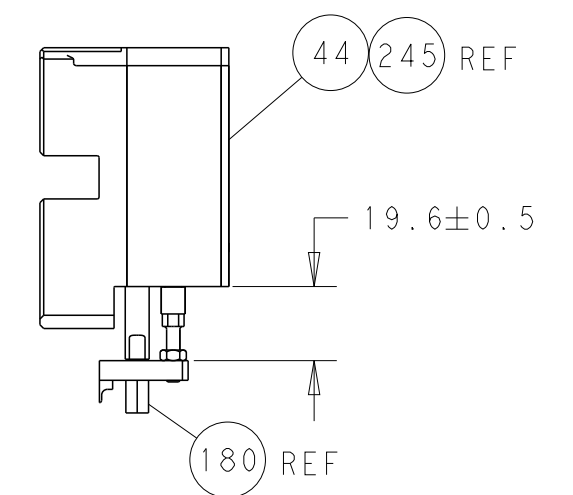
CAM POSITIONS



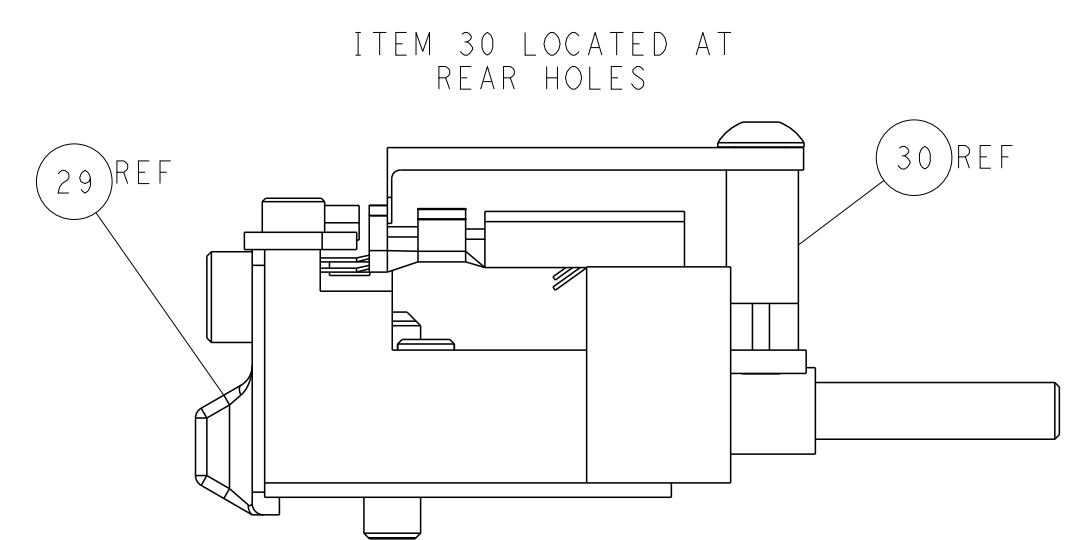
SHEAR DEPRESSOR DETAIL



TERMINAL SUPPORT LOCATION



HOLDDOWN SET-UP



FEED TRACK POSITION GUIDE BY INSULATION BARREL

ATLANTIC VERSION
 Shown on sheets 1 of 4 & 2 of 4
 (Pacific version shown on sheets 3 of 4 & 4 of 4)

DIMENSIONS: mm 		TOLERANCES UNLESS OTHERWISE SPECIFIED: 0 PLC ± 1 PLC ± 2 PLC ± 3 PLC ± 4 PLC ± ANGLES ± FINISH		DWN R. HUANG 25SEP2013 CHK L. ZHANG 25SEP2013 APVD J. GUO 25SEP2013 NAME Ocean Side Feed Applicator SIZE CAGE CODE DRAWING NO RESTRICTED TO A1 00779 C=2266057 Customer Accessible Production Drawing SCALE 1:2 SHEET 2 OF 4 REV B1	
MATERIAL:				WEIGHT:	

PACIFIC VERSION TERMINATOR INTERFACE ADAPTER	PART NUMBER	REVISION	DESCRIPTION	FEED TYPE	
	2-2266057-1	B	FINE CRIMP HEIGHT ADJUST	MECHANICAL	OBSOLETE
	2-2266057-2	B	FINE CRIMP HEIGHT ADJUST	PNEUMATIC	OBSOLETE
	2-2266057-5	B	FINE CRIMP HEIGHT ADJUST	SERVO LATCH PLATE	OBSOLETE
	2-2266057-7	B	FINE CRIMP HEIGHT ADJUST	NONE	OBSOLETE
	7-2266057-7	A	CRIMP TOOLING KIT	-	

APPLICATOR DATA		
CRIMP	SIZE	TYPE
WIRE	2.54 mm [.100]	F
INSUL	4.30 mm [.170]	O
APPLICATOR INSTRUCTIONS 408-10389		

TERMINAL DATA: TE TERMINAL		TE CRIMP SPECIFICATION	
TERMINAL NAME: 1.50mm CONTACT SOCKET			
WIRE STRIP LENGTH		INSULATION DIAMETER RANGE	
5.20-5.80 mm [.205-.228 IN]		Ø2.20-3.00 mm [.087-.118 IN]	
TERMINAL APPLICATION SPECIFICATION	(A)114-18020 (B)114-18040		
TERMINALS APPLIED			
TE TERMINAL	TE TERMINAL	TE SEAL	TE SEAL
(A) 929968-1	(A) 929990-1	(B) 828921-1	
(A) 929968-7	(B) 929990-3	(B) 828904-1	
(A) 929975-1	(B) 929990-4	(B) 828904-2	
(A) 929975-4	(B) 929990-7	(B) 828904-3	
(A) 929975-7	(B) 1-929990-0	(B) 828905-1	
(A) 929975-8	(B) 1703014-1		
(B) 1703050-1	(B) 1703014-4		
(B) 1-1719188-0			

WIRE SIZE	CRIMP HEIGHT mm [INCH]	CRIMP HEIGHT REFERENCE SETTING
2.50mm2	1.97+/-0.03 [.078+/-0.001]	3.5
2.00mm2	1.82+/-0.03 [.072+/-0.001]	5.2
1.50mm2	1.67+/-0.03 [.066+/-0.001]	6.9
16 AWG	1.58+/-0.03 [.062+/-0.001]	8.2

- 1. RECOMMENDED SPARE PARTS
- 2. GREASE BEARING SURFACES LIGHTLY
- 3. LUBRICATE DAILY PER THE APPLICATOR INSTRUCTION SHEET SUPPLIED WITH THE APPLICATOR.
- 4. APPLICATOR SPECIFIC DATA TO BE ENTERED INTO BLANK MEMORY CHIP AT ASSEMBLY. SEE BELOW FOR PART NUMBER:
 MECHANICAL FEED WITH "SMART APPLICATOR" CONVERSION: 8-2266057-4
 PNEUMATIC FEED WITH "SMART APPLICATOR" CONVERSION: 8-2266057-4
 SERVO FEED WITH "FINE CRIMP HEIGHT ADJUST": 8-2266057-5
- 5. ADJUSTMENT OF THE STRIPPER MAY BE REQUIRED WHEN MOVING THE APPLICATOR BETWEEN BENCH AND LEADMAKER APPLICATIONS.
- 6. APPLY PART NUMBER 1-23419-5 LOCTITE TO THREADS OF ITEMS 62 & 180. APPLY PART NUMBER 2-23419-6 LOCTITE TO THREADS OF ITEM 242.
- 7. GREASE THREADS, GROOVE AND O-RING ON ITEMS 139 & 152.
- 8. MAGNET MUST BE ORIENTED CORRECTLY IN ORDER TO PROPERLY ACTUATE THE COUNTER.
- 9. CRIMP HEIGHT REFERENCE SETTING WAS THE SETTING USED WHEN THE APPLICATOR WAS QUALIFIED AT THE FACTORY. ADJUSTMENT MAY BE NECESSARY WHEN RUNNING APPLICATOR IN THE FIELD.
- 10. SPARE FEED CAM STORAGE LOCATION REFER TO INSTRUCTION SHEET FOR ADDITIONAL INFORMATION.
- 11. TO CONVERT THE APPLICATOR TO A NON-CARRIER CUTTING STYLE, REMOVE ITEM 13 AND ATTACH TO THE LOCATION ON BACK SIDE OF THE HOUSING. REFER TO INSTRUCTION SHEET FOR ADDITIONAL INFORMATION.
- 12. INSULATION RANGE QUOTED IS THAT OF THE TERMINAL.
 SEAL PN 828905 - INS. DIA RANGE IS Ø2.2-3.0mm
 SEAL PN 828904 - INS. DIA RANGE IS Ø1.2-2.1mm
 SEAL PN 828921 - INS. DIA RANGE IS Ø2.1-3.0mm
- 13. APPLY TORO-SEAL IN ALLEN SOCKET TO FILL HOLE AFTER FLAT HD HAS BEEN ADJUSTED TO CORRECT HEIGHT AT QUALIFICATION.
 APPLY #1-23419-5 LOC-TITE TO THREADS.
- 14. THIS APPLICATOR IS SPECIFIC FOR USE IN A STRIPPER SEAL TERMINATING UNIT.
- 15. USE P/N 1752356-6 WHEN RUNNING TERMINAL P/N 929990-X.

PACIFIC VERSION
 Shown on sheets 3 of 4 & 4 of 4
 (Atlantic version shown on sheets 1 of 4 & 2 of 4)

SET UP GAUGE	LOC	DIST	REVISIONS					
2119599-1	A	66	P	LTN	DESCRIPTION	DATE	OWN	APVD
			-	-	SEE SHEET 1	-	-	-

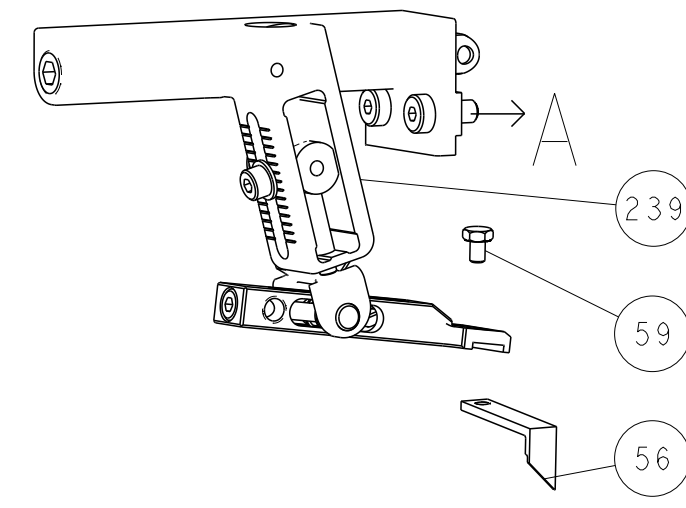
-	1	1	1	1	7-18023-7	SCR, SKT HD CAP M3 X 4.0	241
-	-	2	-	-	2168400-6	SHCS, LOW HEAD, RoHS, M5 X 16	240
-	-	-	-	1	2119580-1	MECHANICAL FEED ASSEMBLY	239
-	-	-	1	-	2063440-1	AIR FEED MODULE	238
-	-	1	-	-	2119740-2	TAG, IDENTIFICATION	213
-	-	1	-	-	1901094-3	SPACER, FEEDER	198
-	1	1	1	1	4-1722335-3	STRIPPER, SIDE FEED	182
-	1	1	1	1	1-5018030-0	NUT, HEX, REG, RoHS, M3.5	181
-	1	1	1	1	1-1752354-9	STANDOFF, HOLD-DOWN	180
-	1	1	1	1	9931111-1	PIN, SLOTTED SPRING 3.0 X 20.0	177
-	1	1	1	1	5-22280-0	SPRING, COMPRESSION	176
-	1	1	1	1	1752353-3	GUIDE PIN, HOLDDOWN	175
-	1	1	1	1	1901680-2	GUIDE PIN, HOLDDOWN	174
-	-	-	2	-	21045-3	RING, RETAIN, EXTERN, 3/16 CRESCENT	172
-	1	1	1	1	994969-1	MAGNET, RARE EARTH HIGH ENERGY	166
-	REF	REF	REF	REF	994970-2	COUNTER, MAGNETIC	164
-	-	-	1	-	240638-1	SPRING, FEED FINGER	163
-	1	1	1	1	8-21084-1	O-RING, .801 ID, .070 DIA, MAT.	152
-	-	-	1	-	2119641-2	FEED CAM, AIR FEED	151
-	1	1	1	1	2119798-2	DETENT PIN	145
-	1	1	1	1	2079383-8	SCR, BHSC, RoHS (M4 X 16)	144
-	4	4	4	4	2168400-5	SHCS, LOW HEAD, RoHS, M4 X 20	143
-	-	-	-	1	2119653-2	FEED CAM, POST FEED	142
-	1	1	1	1	2-2119656-2	APPLICATOR BASIC ASSEMBLY, SF	141
-	1	1	1	1	2119650-1	RAM, ASIAN STYLE, SIDE FEED	140
-	1	1	1	1	2119092-2	BOLT, ADJUSTMENT	139
-	-	-	1	-	3-23627-7	PIN, RETAIN, GRVD, 3/16 X .854	137
-	-	-	1	-	2119799-1	HOLDER, FEED FINGER, AF	136
-	-	REF	-	-	SEE NOTE 4	MEMORY CHIP, PROGRAMMED	135
-	-	1	-	-	1633743-1	SERVO FEED LATCH ASM	133
-	1	1	1	1	1-18028-2	WASHER, FLAT, REG M4	119
-	-	REF	-	-	2119944-1	FEED FINGER ASSEMBLY, SF	117
-	1	1	1	1	455888-4	SPACER, CRIMPER	82
-	1	1	1	1	2119956-1	DOCUMENTATION PACKAGE	71
-	1	1	1	1	2119791-9	DEPRESSOR, WIRE	70
-	1	1	1	1	2119943-1	WASHER, SPACER	69
-	1	-	1	1	2119740-1	TAG, IDENTIFICATION	67
-	2	2	2	2	2168078-1	SCREW, DRIVE, RH, RoHS, 2 x .188	66
-	1	1	1	1	2119793-1	LIMITER, ADJUSTMENT BOLT	63
-	3	3	3	3	992763-5	SCR, SET, SOC, CONE PNT, M3 X 4.0	62
-	-	-	1	1	5-18022-5	SCR, HEX HD CAP, M4 X 6.0	59
-	1	1	1	1	985575-3	SCR, FLT SKT HD CAP M3 X 10.0	57
-	-	-	1	1	1338683-8	FEED PAWL	56
-	2	2	2	2	2168083-8	SCR, SKT HD CAP, RoHS, M4 X 16	53
-	1	1	1	1	5018030-1	NUT, HEX, REG, RoHS, M3	52
-	1	1	1	1	811242-5	BUMPER, HOLD DOWN	51
-	1	1	1	1	690753-2	SPACER, TONKER	50
-	-	-	1	2	18023-9	SCR, SKT HD CAP M4 X 6.0	49
-	-	-	-	1	2119652-1	FEED CAM, PRE FEED	48
-	1	1	1	1	2079383-7	SCR, BHSC, RoHS (M8 X 25)	41
-	1	1	1	1	2119645-1	DISC, NUMBERED FA WIRE ADJUSTMENT	40
-	1	1	1	1	2119957-1	APPLICATOR SHIM PACK	39
-	1	1	1	1	1-2119644-2	RAM WASHER, PRECISION	38
-	1	1	1	1	1-1752356-7	SUPPORT, TERMINAL	34
-	2	2	2	2	2079383-5	SCR, BHSC, RoHS (M4 X 20)	33
-	1	1	1	1	2161328-1	HEX HEAD, FLANGED, M5 X 8mm LONG	32
-	1	1	1	1	2-1320908-2	SPACER, STRIP GUIDE	30
-	1	1	1	1	2119959-1	ASSEMBLY, STRIP GUIDE	29
-	1	1	1	1	455888-3	SPACER, CRIMPER	28
-	1	1	1	1	1320928-6	STRIP GUIDE	24
-	1	1	1	1	2119806-1	INSERT, SHEAR	13
-	1	1	1	1	3-22280-3	SPRING, COMPRESSION	12
-	1	1	1	1	1-356885-4	STOP, SHEAR	11
-	1	1	1	1	2119805-1	SHEAR HOLDER, FRONT	10
-	1	1	1	1	318707-1	FLOATING SHEAR, FRONT	9
-	1	1	1	1	1-1333206-6	ANVIL, COMBINATION .100	8
-	1	1	1	1	6-240641-5	SPACER	7
-	-	-	-	-	-	-	6
-	1	1	1	1	2119781-5	DEPRESSOR, SHEAR	5
-	1	1	1	1	2-238011-1	BLOCK, CRIMPER SPACER	4
-	1	1	1	1	1633996-8	CRIMPER, INSULATION SPECIAL	3
-	1	1	1	1	455888-6	SPACER, CRIMPER	2
-	1	1	1	1	456407-6	CRIMPER, WIRE PREMIUM	1

13	-	1	1	1	1	1752356-6	SUPPORT, TERMINAL	261					
-	-	1	1	1	1	2119782-1	FINE ADJUST HEAD ASM, PACIFIC STYLE	251					
-	-	-	1	-	-	2119640-1	PUSH ROD, AIR FEED	250					
-	-	-	-	1	-	2079988-1	BUSHING, LCH5-12, MISUMI	249					
-	1	1	1	1	1	1-22279-3	SPRING, COMPRESSION	246					
-	1	1	1	1	1	2119082-9	CAM, SNAIL, INSULATION ADJUSTMENT	244					
-	1	1	1	1	1	2079764-1	WASHER, WAVE SPRING, CREST-TO-CREST	243					
-	1	1	1	1	1	2119083-1	RETAINER, INSULATION DIAL	242					
6	-	77	-	27	-	25	-	22	-	21	PART NO	DESCRIPTION	ITEM NO

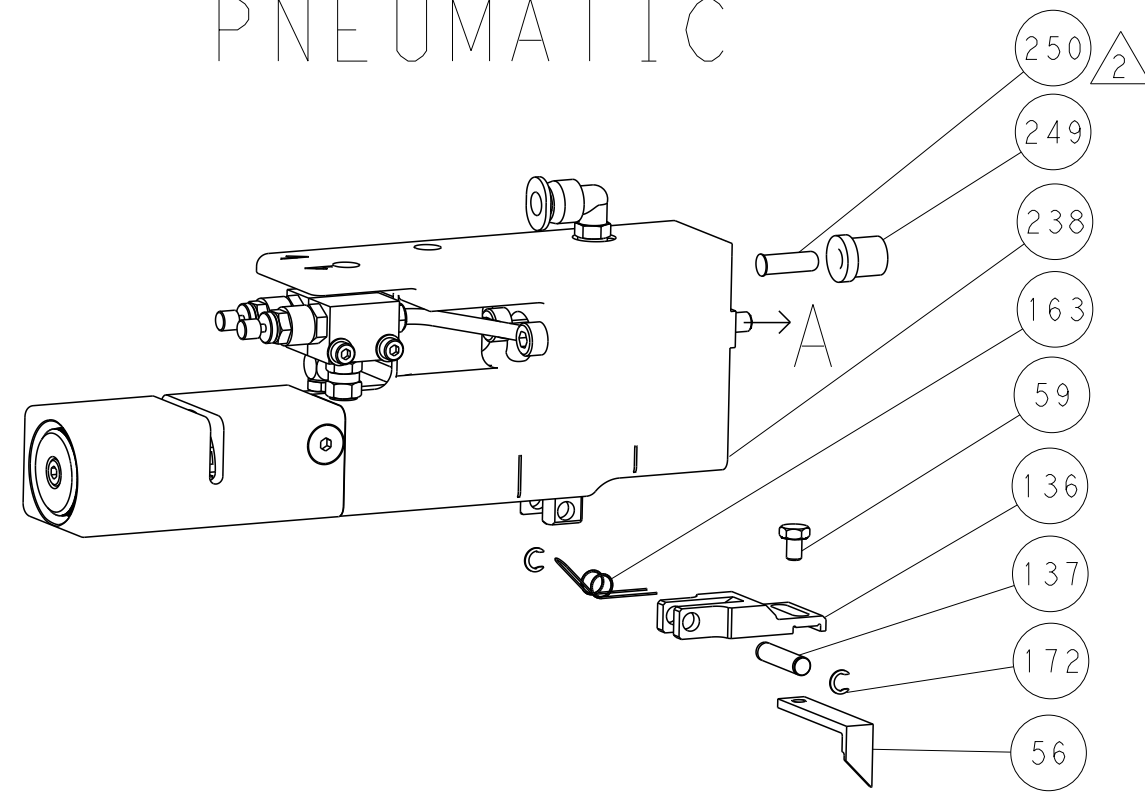
DIMENSIONS:		TOLERANCES UNLESS OTHERWISE SPECIFIED:		DWG		NAME	
mm	0 PLC ±	1 PLC ±	2 PLC ±	3 PLC ±	4 PLC ±	5 PLC ±	6 PLC ±
	ANGLES ±	FINISH					
MATERIAL		WEIGHT		SIZE	CAGE CODE	DRAWING NO	RESTRICTED TO
				A1	00779	2266057	
Customer Accessible Production Drawing				SCALE	1:2	SHEET	3 OF 4

LOC	DIST	REVISIONS					
A	66	P	LYN	DESCRIPTION	DATE	OWN	APVD
		-		SEE SHEET 1			

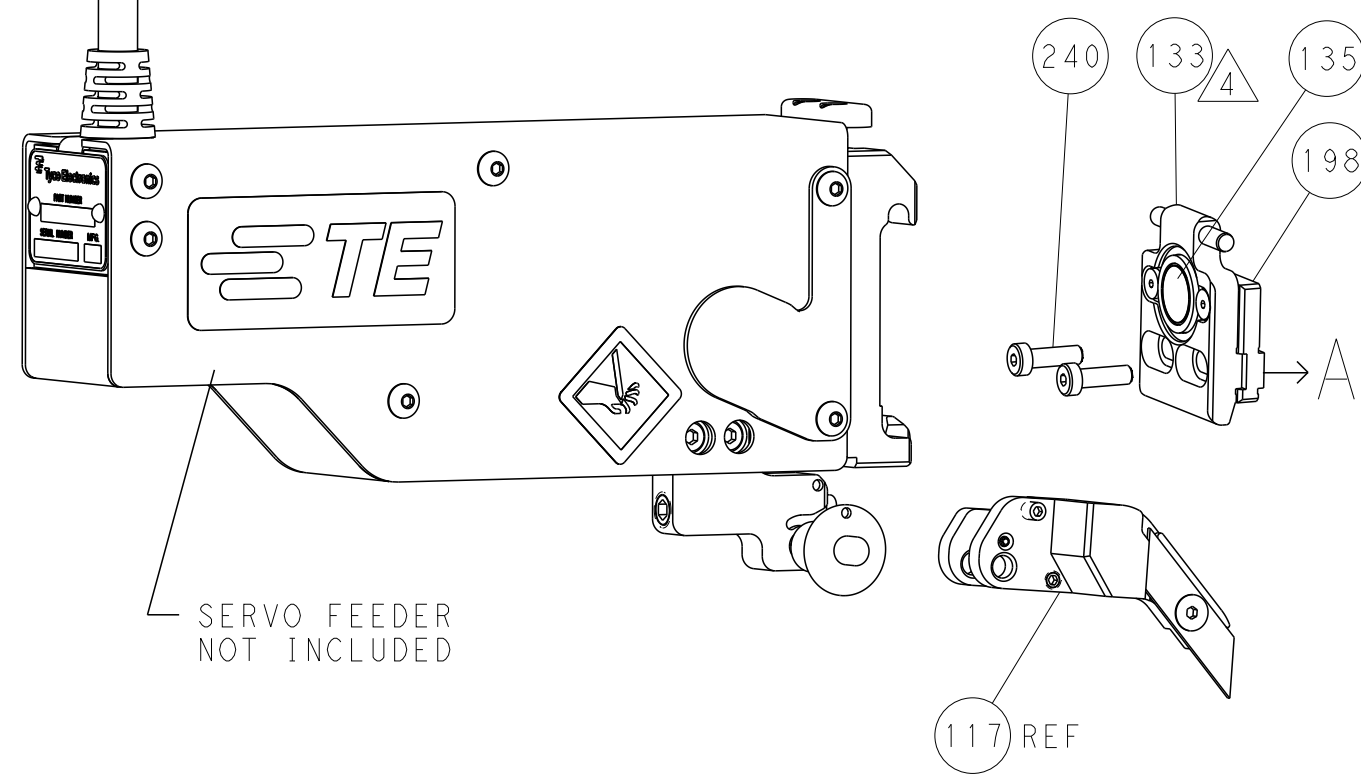
FEED TYPE MECHANICAL



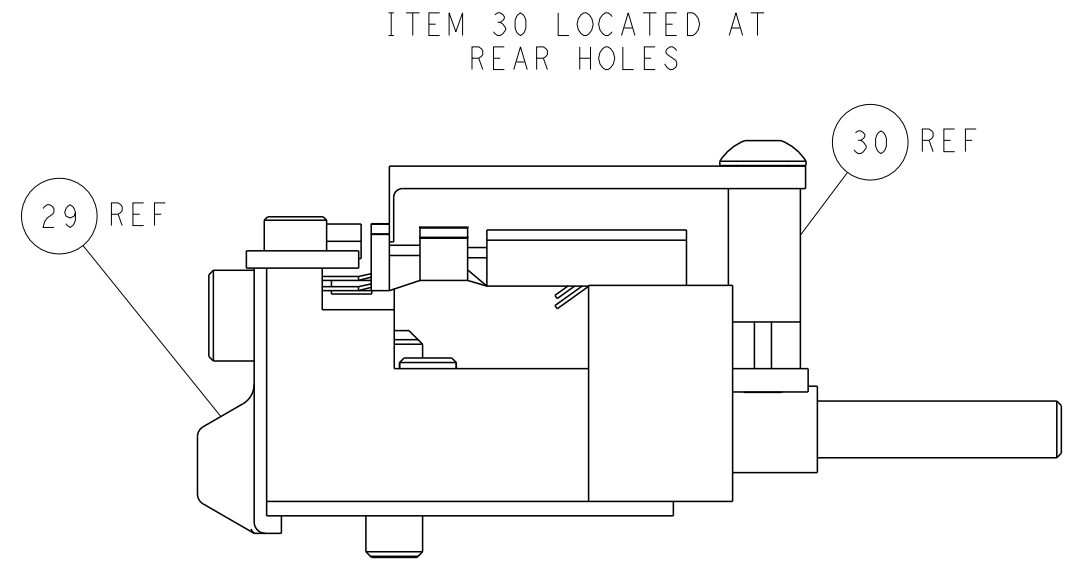
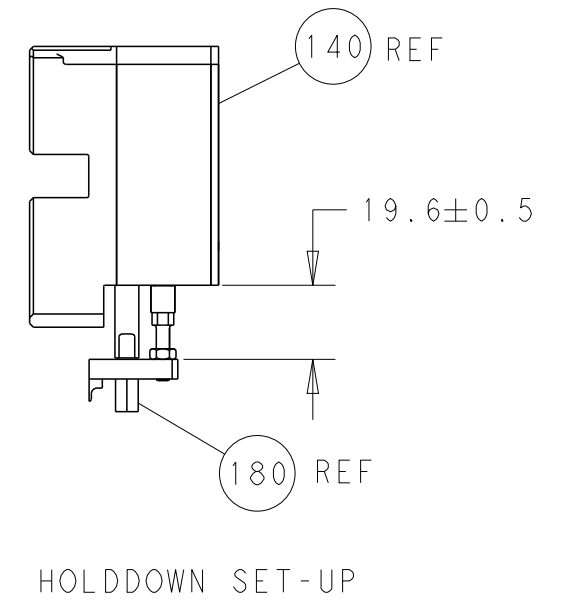
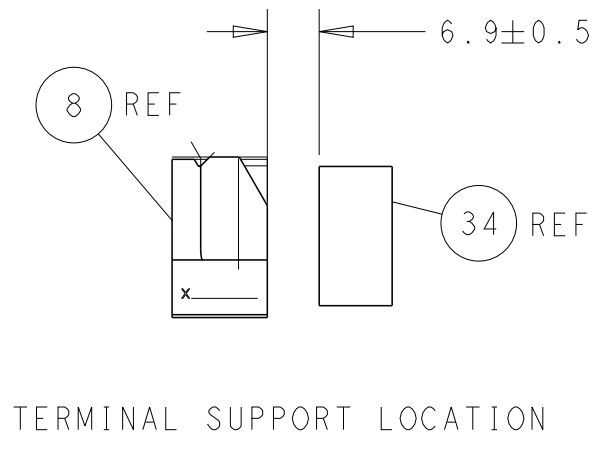
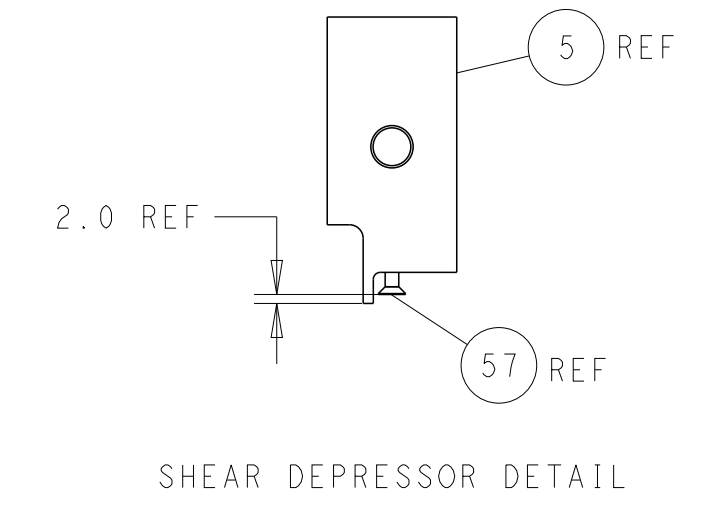
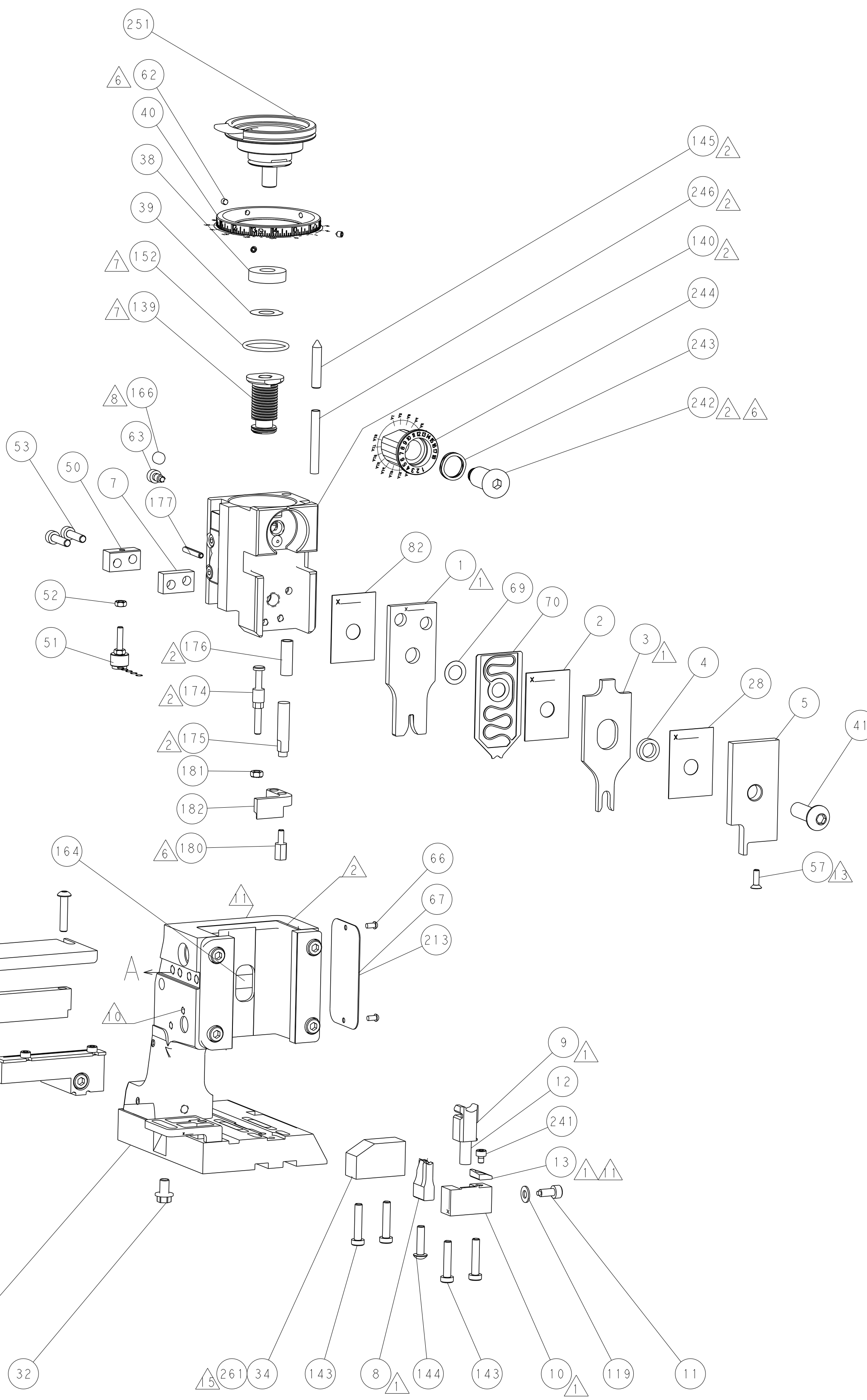
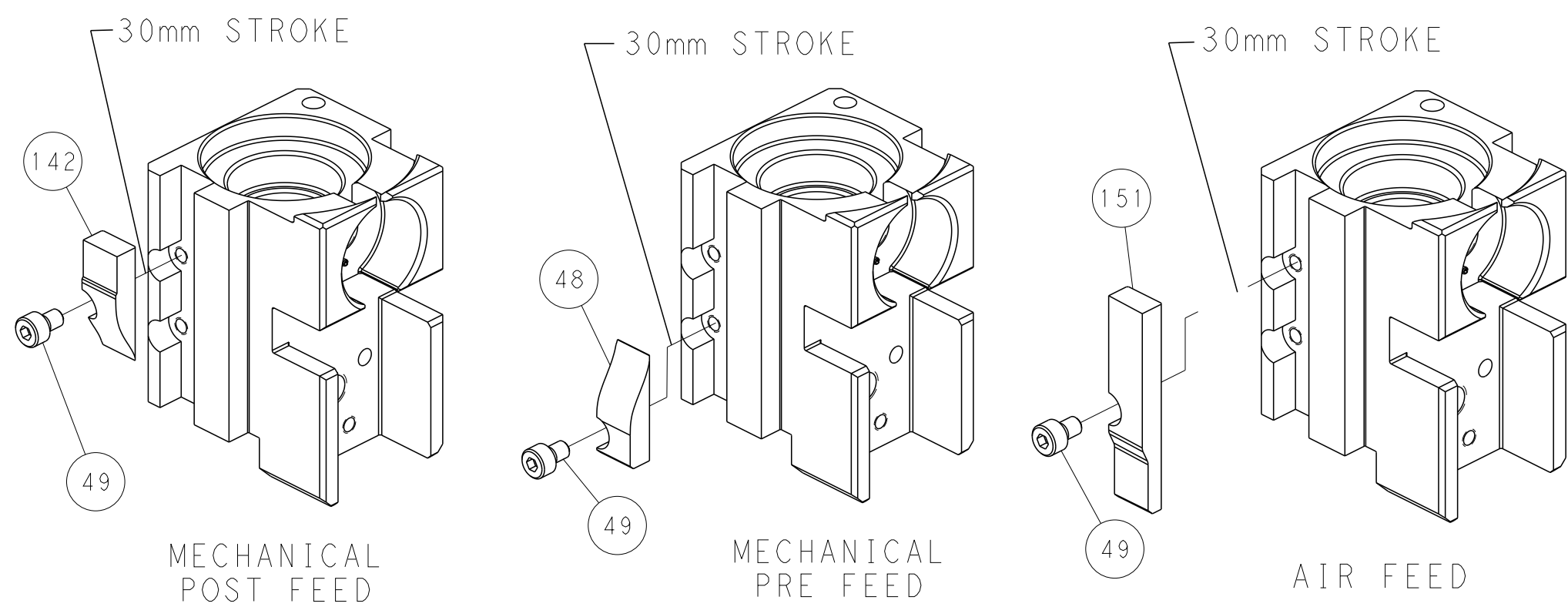
PNEUMATIC



SERVO LATCH PLATE



CAM POSITIONS



PACIFIC VERSION
 Shown on sheets 3 of 4 & 4 of 4
 (Atlantic version shown on sheets 1 of 4 & 2 of 4)

DIMENSIONS: mm 		TOLERANCES UNLESS OTHERWISE SPECIFIED: 0 PLC ± 1 PLC ± 2 PLC ± 3 PLC ± 4 PLC ± ANGLES ± FINISH ±		DWN R. HUANG 25SEP2013 CHK L. ZHANG 25SEP2013 APVD J. GUO 25SEP2013 NAME Ocean Side Feed Applicator SIZE CAGE CODE DRAWING NO. RESTRICTED TO A1 00779 C=2266057 Customer Accessible Production Drawing SCALE 1:2 SHEET 4 OF 4 REV B1	
-----------------------	--	---	--	--	--