

Technical specification:

Rated voltage: IEC 61076-2-101	4pol 5pol 240 V 60 V
Current rating: IEC 61076-2-101	4 A at 40°C
Insulation resistance: IEC 60512	>=100 MΩ
Pollution degree: IEC 60664-1	3/2
Degree of protection: IEC 60529	IP 67, in mated condition
Temperature range: IEC 60664-1	-30°C ... +80°C
Mating cycles: IEC 60512-9a	>=100

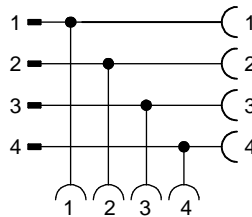
Materials:

Contact:	CuZn
Contact plating:	Nickel, gold plated
Contact carrier:	TPU GF, UL 94
Sealing:	FPM
Coupling nut/ screw:	GD-Zn, nickel plated
Moulding body:	TPU, UL 94, grey

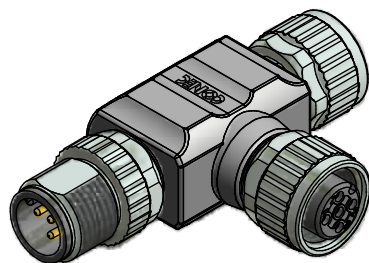
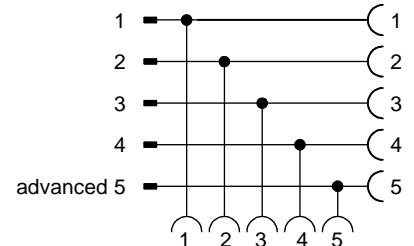
Installation specification:

Recommended torque:	0,6 Nm
Conec installation tool:	Torque wrench: 36-000200 Insert across flats 13: 36-000220

Contact assignment 4pos:



Contact assignment 5pos:



Part no:	Description:
43-05115	SAL - 12 - TS4 - TK4 - TK4
43-05116	SAL - 12 - TS5 - TK5 - TK5

DO NOT ALTER CAD DRAWING BY HAND
Directive 2002/95/EC RoHS compliant

Index: a 28.03.11 VF Ä3767
Coupling nut/screw modified, spanner flats added, data sheet modified

THIS DRAWING MAY NOT BE COPIED OR REPRODUCED IN ANY WAY, AND MAY NOT BE PASSED ON TO A THIRD PARTY WITHOUT WRITTEN PERMISSION.
OWNERSHIP AND COPYRIGHT OF CONEC GmbH

dim. in mm	
date	name
drawn 06.10.09	Fromm
appd. 06.10.09	Mankopf



title:
Adapter, male connector M12x1 - 2x female connector M12x1

dwg no:
43K1A962

part no:
see table