

# QLN65AC Series Crossflow Blower

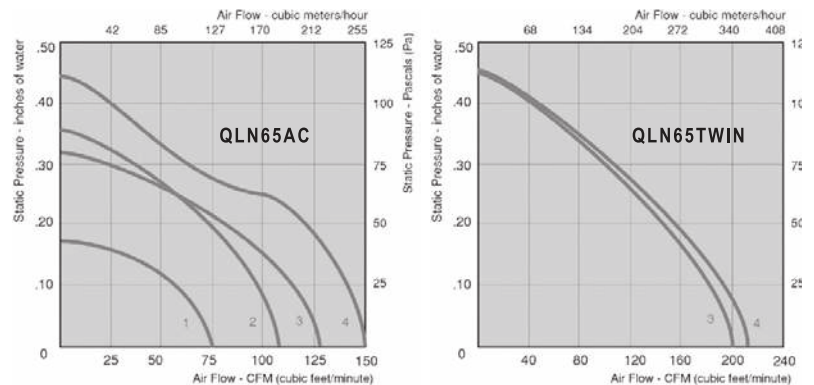
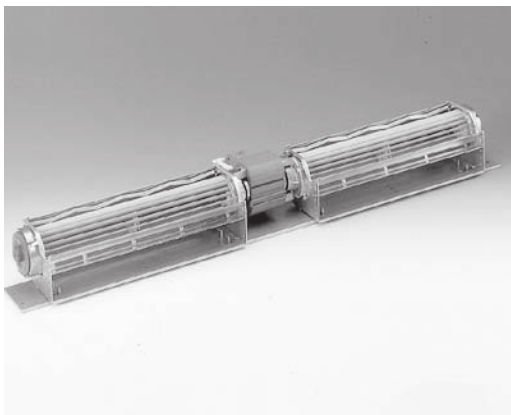
120... 300mm x Ø 65mm

- AC blower with shaded pole motor with sleeve bearings and terminals. Max ambient temperature of 60 C.
- High volume and performance already at a low air velocity, therefore low noise level.
- Fan propeller of aluminum and air duct housing of sheet steel.
- Rotational direction CW looking at rotor.
- UL, CSA, VDE approvals on some models. Please contact application engineering

| Part Number | Model Number            | Curve | CFM @ 0 | VAC     | Hertz | Power (W) | dBA | Motor Position | Bobbin Position | Insul. Class |
|-------------|-------------------------|-------|---------|---------|-------|-----------|-----|----------------|-----------------|--------------|
| 55416.17070 | QLN650012A112524L50KX   | 1     | 75      | 115     | 60    | 39        | 49  | Left           | Front           | B            |
| 55416.17090 | QLN650012A132524LH66RV  | 1     | 75      | 115     | 60    | 39        | 49  | Left           | Up              | H            |
| 55416.25130 | QLN651800A193030L139ZR  | 2     | 110     | 115     | 60    | 46        | 49  | Right          | Front           | B            |
| 55416.25170 | QLN651800A253030LH85ABZ | 2     | 110     | 115     | 60    | 46        | 49  | Right          | Front           | H            |
| 55416.27070 | QLN650018A203030L167ZR  | 2     | 110     | 115     | 60    | 46        | 49  | Left           | Front           | B            |
| 55416.27080 | QLN650018A243030LH81ABZ | 2     | 110     | 115     | 60    | 46        | 49  | Left           | Front           | H            |
| 55416.30031 | QLN652400A43030L139ZS   | 3     | 127     | 115     | 60    | 56        | 46  | Right          | Front           | B            |
| 55416.30130 | QLN652400A203030LH85ACW | 3     | 127     | 115     | 60    | 56        | 46  | Right          | Front           | H            |
| 55416.32021 | QLN650024A53030L167ZS   | 3     | 127     | 115     | 60    | 56        | 46  | Left           | Front           | B            |
| 55416.32080 | QLN652424A33045L51DM    | 3     | 127     | 115     | 60    | 56        | 46  | Left           | Front           | H            |
| 55416.35031 | QLN653000A33045L48DL    | 4     | 150     | 115     | 60    | 66        | 49  | Right          | Front           | B            |
| 55416.37070 | QLN650030A153045LH60NI  | 4     | 150     | 115     | 60    | 66        | 49  | Left           | Front           | H            |
| <hr/>       |                         |       |         |         |       |           |     |                |                 |              |
| 55416.30109 | QLN652400A283045LH65UG  | 3     | 127     | 230     | 50    | 56        | 46  | Right          | Front           | F            |
| <hr/>       |                         |       |         |         |       |           |     |                |                 |              |
| 55416.35070 | QLN653000A103045L48DV   | -     | 155-144 | 220/240 | 50/60 | 54/58     | 49  | Right          | Down            | B            |

## QLN65TWIN Series

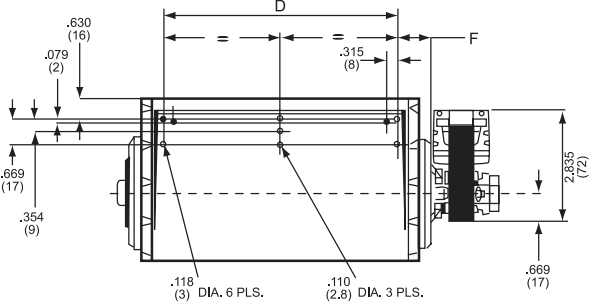
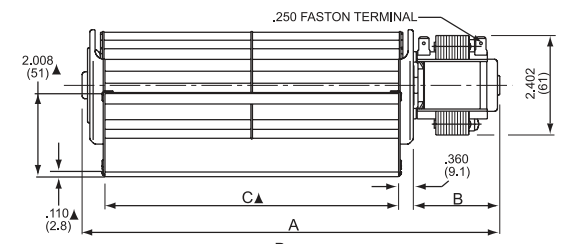
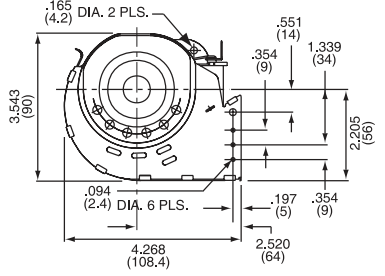
|             |                       |   |     |     |    |    |    |        |      |   |
|-------------|-----------------------|---|-----|-----|----|----|----|--------|------|---|
| 55416.29080 | QLN651818A83045LH69UH | 3 | 200 | 115 | 60 | 80 | 49 | Center | Back | B |
| 55416.34090 | QLN652424A93045LH69UH | 4 | 215 | 115 | 60 | 80 | 47 | Center | Back | B |



# QLN65AC Series Mechanical Data Crossflow Blower

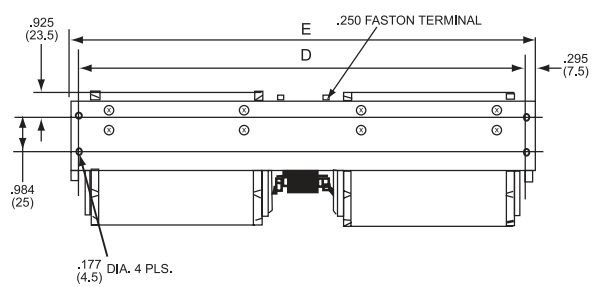
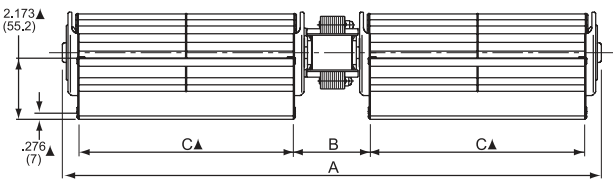
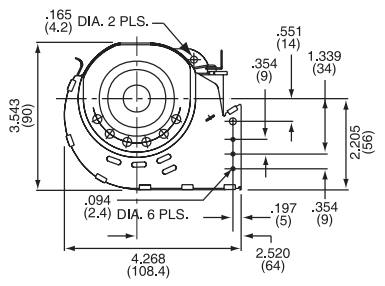
120... 300mm x Ø 65mm

| Part Number  | Motor Position                  | A     |     | B    |      | C      |       | D     |     | E     |     | F    |     |
|--|---------------------------------|-------|-----|------|------|--------|-------|-------|-----|-------|-----|------|-----|
|  |                                 | inch  | mm  | inch | mm   | inch   | mm    | inch  | mm  | inch  | mm  | inch | mm  |
| QLN65/0018-A203030L167ZR<br>QLN65/0018-A243030LH81ABZ<br>QLN65/1800-A193030L139ZR<br>QLN54/1800-A253030LH86ABZ | Left<br>Left<br>Right<br>Right  | 10.67 | 271 | 2.52 | 64   | 7.09   | 180   | 6.06  | 154 | N/A   | N/A | 0.55 | 14  |
| QLN65/0024-A53030L167ZS<br>QLN65/2400-A43030L139ZS<br>QLN65/2400-A283045LH65UG<br>QLN65/3400-A20303LH85ACW     | Left<br>Right<br>Right<br>Right | 13.03 | 331 | 2.52 | 64   | 9.45   | 240   | 8.35  | 212 | N/A   | N/A | 0.59 | 15  |
| QLN65/0030-A153045LH60NI<br>QLN54/3000-A33045L48DL<br>QLN54/3000-A10345L48DV                                   | Left<br>Right<br>Right          | 15.98 | 406 | 3.11 | 76   | 11.81  | 300   | 10.71 | 272 | N/A   | N/A | 0.59 | 15  |
| QLN65/1212-3038L   | Middle                          | 14.21 | 361 | 3.31 | 84   | 2x4.72 | 2x120 | 13.58 | 345 | 14.17 | 360 | N/A  | N/A |
| QLN65/1818-3045L   | Middle                          | 19.25 | 489 | 3.64 | 92.5 | 2x7.09 | 2x180 | 18.58 | 472 | 19.13 | 486 | N/A  | N/A |
| QLN65/2424-A33045L51DM   | Middle                          | 23.82 | 605 | 3.64 | 92.5 | 2x9.45 | 2x240 | 23.07 | 586 | 23.66 | 601 | N/A  | N/A |



Dimensions: inches (mm)  
▲ Dimension denotes air outlet

## QLN65TWIN Series



All data subject to change without notice



e-mail: [sales@us.ebmpapst.com](mailto:sales@us.ebmpapst.com) · TEL: 860-674-1515 · FAX: 860-674-8536  
 ebm-papst Inc., 100 Hyde Road, Farmington, CT 06034 USA  
 ebm-papst Inc., 2004 © ebm-papst Inc. reserves the right to change any specifications or data without notice