

DESIGNED AND DIMENSIONED IN INCHES[MILLIMETERS]
ALL DIMENSIONS REFERENCE EXCEPT AS SHOWN

SEAFc-XX-X.X-X-XX-X-X-K-XR

DO NOT
SCALE FROM
THIS PRINT

No OF POSITIONS
-20, -30, -40, -50
(PER ROW)

PACKAGING (SEE NOTES 3, 4 & 7)
-TR: TAPE & REEL
-FR: FULL REEL QTY. TAPE & REEL

LEAD STYLE
-5.0: .199[5.05] HEIGHT
* -6.0: .238[6.05] HEIGHT
-6.5: .258[6.55] HEIGHT
* -7.5: .297[7.54] HEIGHT
(SEE TABLE 1)

K-DOT
(SEE FIG 3, SHT 2)

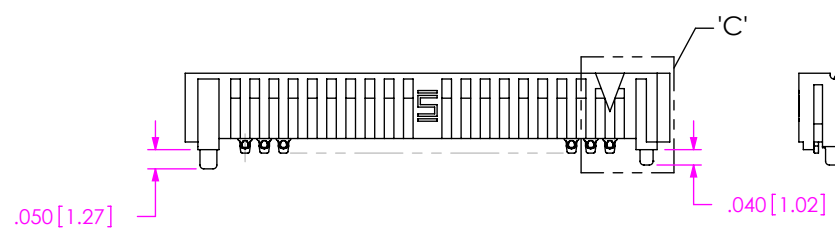
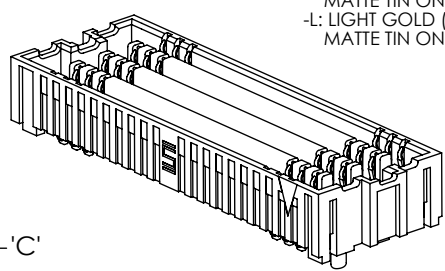
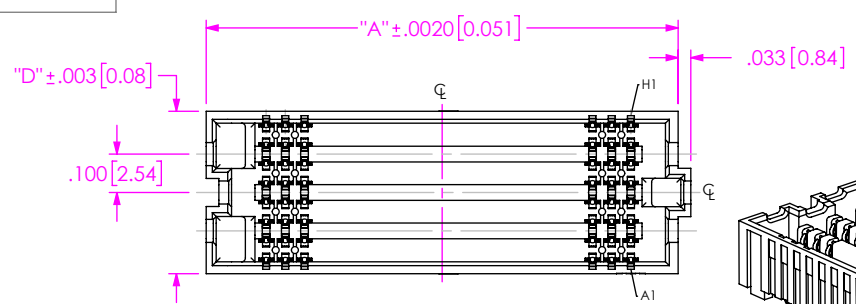
OPTION
-N: NO LATCH
** (LEAVE BLANK FOR LATCH POST)
(SEE SHT 3, FIG 4)
(ONLY AVAILABLE WITH -5.0
LEAD STYLE, -04, -06, -08 & -10 ROW)

SOLDER COMPOSITION & STYLE
-1: 63% TIN / 37% LEAD
CHARGE TAIL
-2: 95.5% TIN/3.8% SILVER/.7%
COPPER **CHARGE TAIL**

PLATING SPECIFICATION
-S: SELECTIVE GOLD (30µ") IN CONTACT AREA,
MATTE TIN ON TAIL
-L: LIGHT GOLD (10µ") IN CONTACT AREA,
MATTE TIN ON TAIL

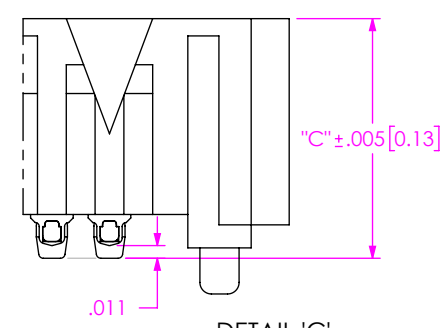
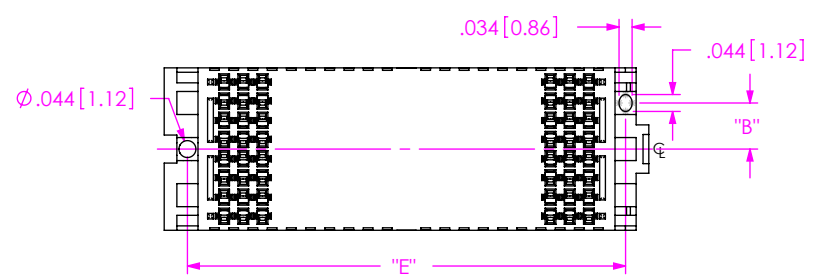
ROWS
-04: 4 ROWS (SEE SHT 2, FIG 2)
-06: 6 ROWS
-08: 8 ROWS (SEE FIG 1)
-10: 10 ROWS

* = NOT TOOLED
** = ONLY AVAILABLE WITH -5.0 LEAD STYLE,
-04, -06, -08 & -10 ROW.



No OF ROWS	"B"	"D"
-04	.079 [2.01]	.223 [5.66]
-06	.120 [3.05]	.323 [8.20]
-08	.120 [3.05]	.423 [10.74]
-10	.120 [3.05]	.523 [13.28]

No. OF ROWS	LEAD STYLE	"C"
-04	-5.0	.213 [5.41]
	-6.0	.252 [6.40]
	-6.5	.272 [6.91]
	-7.5	.311 [7.90]
-06, -08, -10	-5.0	.208 [5.28]
	-6.0	.247 [6.27]
	-6.5	.267 [6.78]
	-7.5	.306 [7.77]



No OF POS.	"A"	"E"
-20	1.229 [31.22]	1.1410 [28.981]
-30	1.729 [43.92]	1.6410 [41.681]
-40	2.229 [56.62]	2.1410 [54.381]
-50	2.729 [69.32]	2.6410 [67.081]

FIG 1
-08: 8 ROW
(SEAFc-20-5.0-X-08-1-N-K-XR SHOWN)
(SOME CENTER FEATURES REMOVED FOR CLARITY)

DETAIL 'C'
SCALE 6 : 1

NOTES:

- NOTE DELETED.
- A-PINS PROVIDED AS STANDARD.
- TAPE & REEL IS STANDARD PACKAGING.
- ATTACH LABEL TO EACH REEL.
- SOLDER CHARGE VOLUME .00000891 CUBIC INCHES (REF).
- NON-FUNCTIONAL VOIDING IN PLASTIC BODY TO BE AT SAMTEC'S DISCRETION.
- ORDERS WILL BE PACKAGED ACCORDING TO THE SAMTEC PACKAGING EFFICIENCY STANDARDS (SPES) FOUND ON WWW.SAMTEC.COM

PROPRIETARY NOTE
THIS DOCUMENT CONTAINS CONFIDENTIAL AND PROPRIETARY INFORMATION AND ALL DESIGN, MANUFACTURING, REPRODUCTION, USE, PATENT RIGHTS AND SALES RIGHTS ARE EXPRESSLY RESERVED BY SAMTEC, INC. THIS DOCUMENT SHALL NOT BE DISCLOSED, IN WHOLE OR PART, TO ANY UNAUTHORIZED PERSON OR ENTITY NOR REPRODUCED, TRANSFERRED OR INCORPORATED IN ANY OTHER PROJECT IN ANY MANNER WITHOUT THE EXPRESS WRITTEN CONSENT OF SAMTEC, INC.



520 PARK EAST BLVD, NEW ALBANY, IN 47150
PHONE: 812-944-6733 FAX: 812-948-5047
e-Mail info@SAMTEC.com code 55322

DO NOT SCALE DRAWING
SHEET SCALE: 2:1
MATERIAL:
INSULATOR: LCP, COLOR: BLACK
CONTACT OR TERMINAL:
SHIELD: PHOS BRONZE

DESCRIPTION:
.050 PITCH SOCKET ARRAY ASSEMBLY
DWG. NO.
SEAFc-XX-X.X-X-XX-X-X-K-XR
BY: JERRY SU 04/12/2019 SHEET 1 OF 3

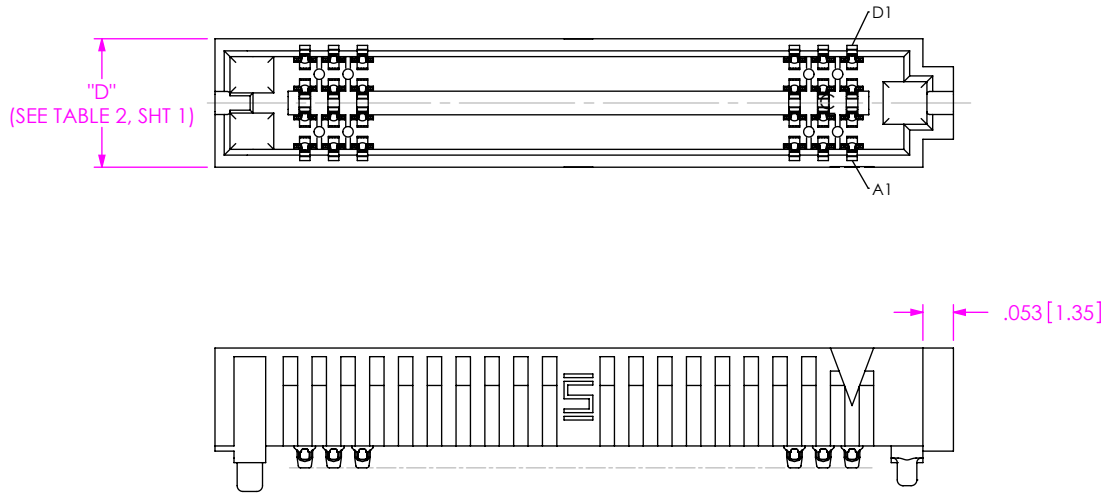


FIG 2
-04: 4 ROW
(SEAFc-20-5.0-X-04-1-N-K-XR SHOWN)
(DIFFERENT AS SHOWN, OTHERWISE SAME AS FIG 1)
(SOME CENTER FEATURES REMOVED FOR CLARITY)

TABLE 4

ROWS	"G"	"H"				"J"
		20 POS	30 POS	40 POS	50 POS	
-04	.256 [6.50]	.504 [12.79]	.754 [19.14]	1.004 [25.49]	1.254 [31.84]	.017 [.43]
-06	.256 [6.50]	.504 [12.79]	.754 [19.14]	1.004 [25.49]	1.254 [31.84]	.034 [.86]
-08	.325 [8.25]	.469 [11.92]	.719 [18.27]	.969 [24.62]	1.219 [30.97]	.049 [1.24]
-10	.404 [10.25]	.430 [10.92]	.680 [17.27]	.930 [23.62]	1.180 [29.97]	.060 [1.52]

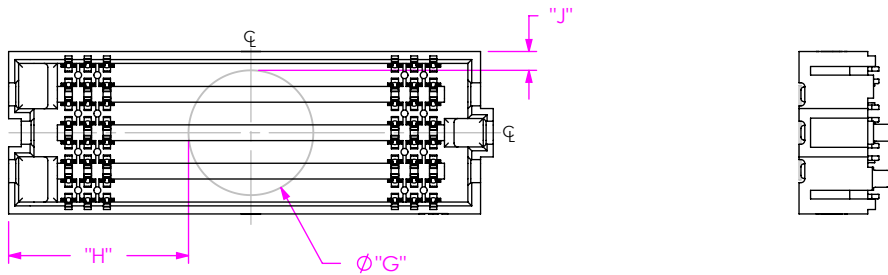
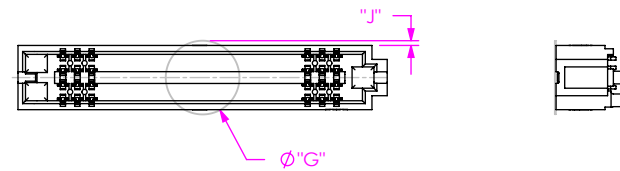


FIG 3
K-DOT
(SEAFc-20-5.0-X-08-1-N-K-XR SHOWN)
(DIFFERENT AS SHOWN, OTHERWISE SAME AS FIG 1)
(SOME CENTER FEATURES REMOVED FOR CLARITY)



-04 ROW ONLY
(DIFFERENT AS SHOWN, OTHERWISE SAME AS FIG 3)

PROPRIETARY NOTE
THIS DOCUMENT CONTAINS CONFIDENTIAL AND PROPRIETARY INFORMATION AND ALL DESIGN, MANUFACTURING, REPRODUCTION, USE, PATENT RIGHTS AND SALES RIGHTS ARE EXPRESSLY RESERVED BY SAMTEC, INC. THIS DOCUMENT SHALL NOT BE DISCLOSED, IN WHOLE OR PART, TO ANY UNAUTHORIZED PERSON OR ENTITY NOR REPRODUCED, TRANSFERRED OR INCORPORATED IN ANY OTHER PROJECT IN ANY MANNER WITHOUT THE EXPRESS WRITTEN CONSENT OF SAMTEC, INC.



520 PARK EAST BLVD, NEW ALBANY, IN 47150
PHONE: 812-944-6733 FAX: 812-948-5047
e-Mail: info@SAMTEC.com code 55322

DO NOT SCALE DRAWING

SHEET SCALE: 2:1

DESCRIPTION:
.050 PITCH SOCKET ARRAY ASSEMBLY

DWG. NO.
SEAFc-XX-X.X-X-XX-X-X-K-XR

BY: JERRY SU 04/12/2019 SHEET 2 OF 3

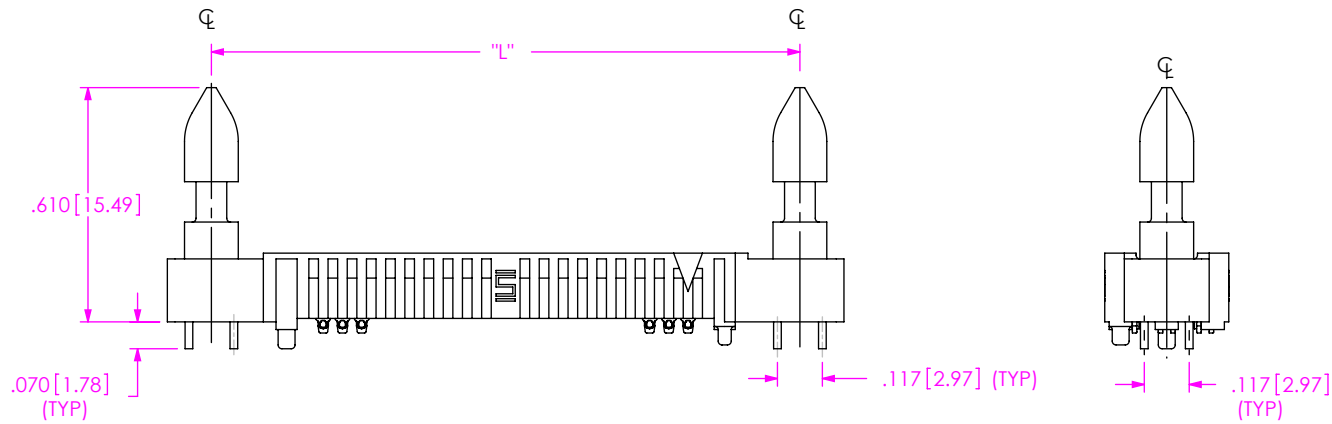
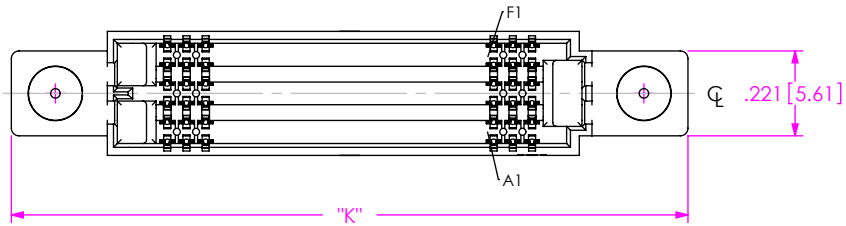


FIG 4
 LATCH POST OPTION
 (SE AFC-20-5.0-X-06-1-K-XR SHOWN)
 (SOME CENTER FEATURES REMOVED FOR CLARITY)
 (DIFFERENT AS SHOWN, OTHERWISE SAME AS FIG 1)
 (LATCH POST OPTION REQUIRED FOR SEAC MATE ONLY)
 (ONLY AVAILABLE WITH -5.0 LEAD STYLE -04, -06, -08 & -10 ROW)

No OF POS.	"K"	"L"
-20	1.762 [44.75]	1.533 [38.94]
-30	2.262 [57.45]	2.033 [51.64]
-40	2.762 [70.15]	2.533 [64.34]
-50	3.262 [82.85]	3.033 [77.04]

PROPRIETARY NOTE
 THIS DOCUMENT CONTAINS CONFIDENTIAL AND PROPRIETARY INFORMATION AND ALL DESIGN, MANUFACTURING, REPRODUCTION, USE, PATENT RIGHTS AND SALES RIGHTS ARE EXPRESSLY RESERVED BY SAMTEC, INC. THIS DOCUMENT SHALL NOT BE DISCLOSED, IN WHOLE OR PART, TO ANY UNAUTHORIZED PERSON OR ENTITY NOR REPRODUCED, TRANSFERRED OR INCORPORATED IN ANY OTHER PROJECT IN ANY MANNER WITHOUT THE EXPRESS WRITTEN CONSENT OF SAMTEC, INC.



520 PARK EAST BLVD, NEW ALBANY, IN 47150
 PHONE: 812-944-6733 FAX: 812-948-5047
 e-Mail info@SAMTEC.com code 55322

DO NOT SCALE DRAWING

SHEET SCALE: 3:1

DESCRIPTION:
 .050 PITCH SOCKET ARRAY ASSEMBLY

DWG. NO.
SE AFC-XX-X.X-X-XX-X-X-K-XR

BY: JERRY SU 04/12/2019 SHEET 3 OF 3