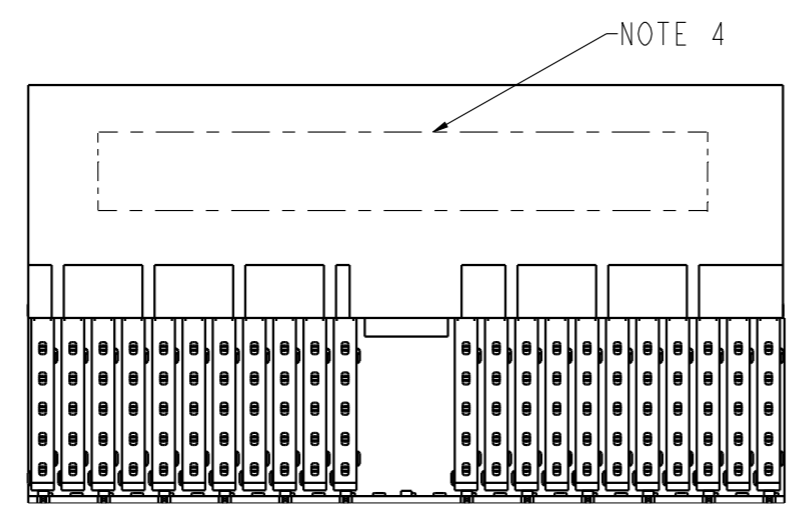
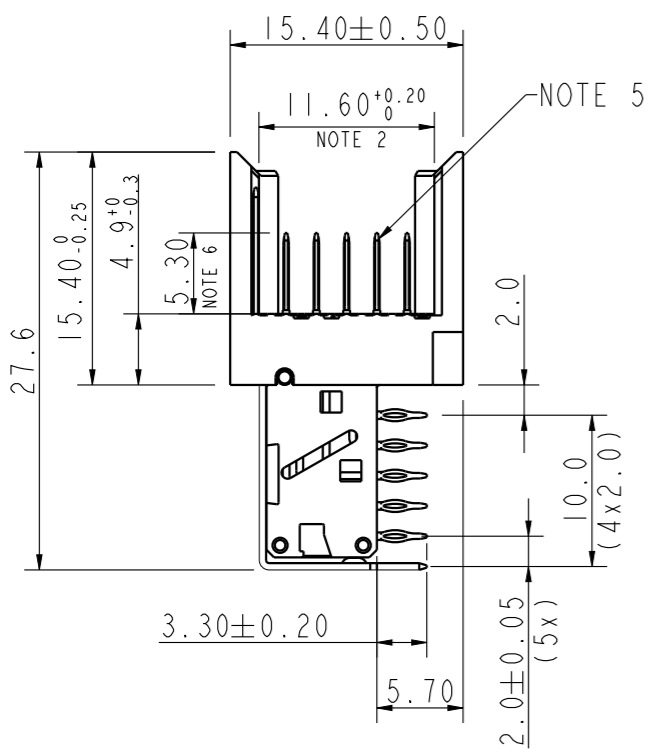
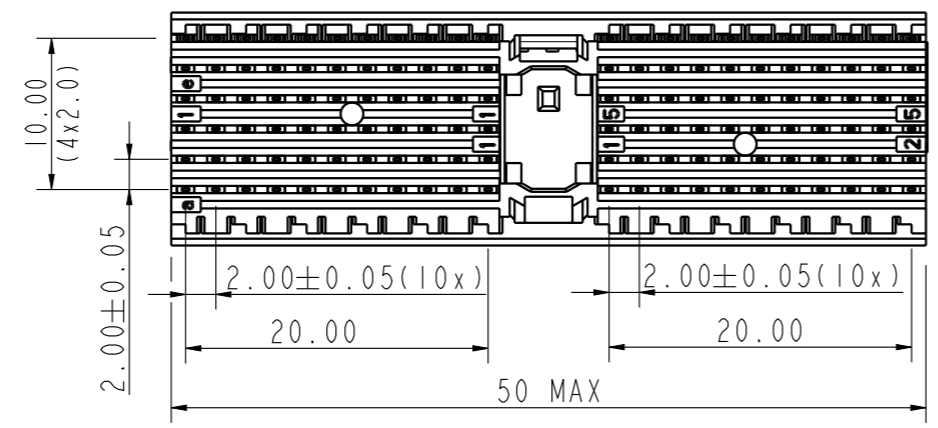


PERFORMANCE CHARACTERISTICS :

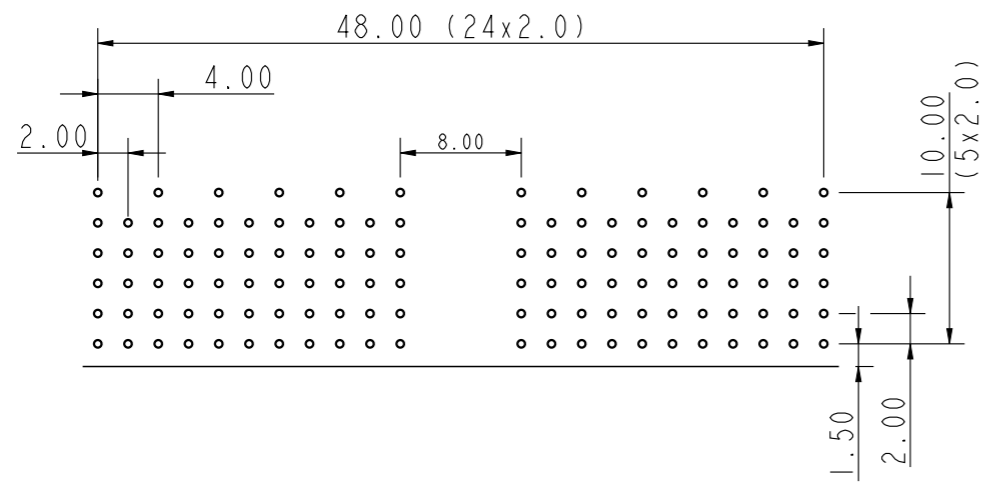
CURRENT RATING : 1.5A AT 20°C (FULLY LOADED)
 1A AT 70°C (FULLY LOADED)
 RATED VOLTAGE : 500V AC (CONT / CONT)
 OPERATING TEMPERATURE : -55°C TO 125°C
 CONTACT RESISTANCE : 25mΩ MAX.
 INSERTION FORCE : 0.75 N MAX / CONT
 EXTRACTION FORCE : 0.15 N MIN / CONT
 INSULATION RESISTANCE : 10⁴ MΩ MIN.

NOTES :

- UL APPROVED WITH USR AND CNR.
- MEASURED AT THE BOTTOM.
- MATERIAL CONTACT : PHOSPHORBRONZE.
HOUSING : LCP 30% GLASS-FILLED
- CONNECTOR PRINTED WITH P/N AND DATE CODES.
- FOR ACTUAL CONTACT LOADINGS, SEE LOADING PATTERN MATING SIDE.)
- 4 = LEVEL 1 (5.30)
5 = LEVEL 2 (6.80)
6 = LEVEL 3 (8.30)
- 'HM2J07PEE128' LEAD FREE INDICATOR : LF = LEAD FREE
PERFORMANCE LEVEL INDICATOR (Ref DWG No BS,C ,201844,003)
- FOR RECOMMENDED PTH DIMENSIONS REFER DRAWING : BS,A ,201572,001
- THIS PRODUCT (LF) MEETS EUROPEAN UNION DIRECTIVES AND OTHER COUNTRY REGULATIONS AS DESCRIBED IN GS-47-0004



PCB HOLE LAY-OUT



LOADING PATTERN : MATING SIDE

F	6	6	6	6	6	6	6	6	6	6	X	X	X	6	6	6	6	6	6	6	6	6	6	6	6
E	5	5	5	5	5	5	5	5	5	5	X	X	X	5	5	5	5	5	5	5	5	5	5	5	5
D	5	5	5	5	5	5	5	5	5	5	X	X	X	5	5	5	5	5	5	5	5	5	5	5	5
C	5	5	5	5	5	5	5	5	5	5	X	X	X	5	5	5	5	5	5	5	5	5	5	5	5
B	5	5	5	5	5	5	5	5	5	5	X	X	X	5	5	5	5	5	5	5	5	5	5	5	5
A	5	5	5	5	5	5	5	5	5	5	X	X	X	5	5	5	5	5	5	5	5	5	5	5	5
Z	0	0	0	0	0	0	0	0	0	0	X	X	X	0	0	0	0	0	0	0	0	0	0	0	0
	1	2	3	4	5	6	7	8	9	10	11	12	13	14	15	16	17	18	19	20	21	22	23	24	25

Amphenol FCI

© 2016 AFCI

spec ref	-	dr	P-Mathew Nebu	2011/05/25	projection	mm	size	A3	scale	1/1				
tolerance std	ISO 406 ISO 1101	eng	Alex Babu	2020/07/27			ecn no	ELX-I-37774-1						
surface	linear	chr	-	apppr			Kuriakose, San	2020/07/27	product family	MILLIPACS				
	angular	0°	±0.2	±0.1	±0.05	±1°	rel level	Released						
TOLERANCES UNLESS OTHERWISE SPECIFIED		Amphenol FCI		MPACS RA HDR		type A, shielded, general		cat. no.		HM2J07PEE128----	Product - Customer Drw		sheet 1 of 1	
						dwg no		BSC202767031		rev		H		