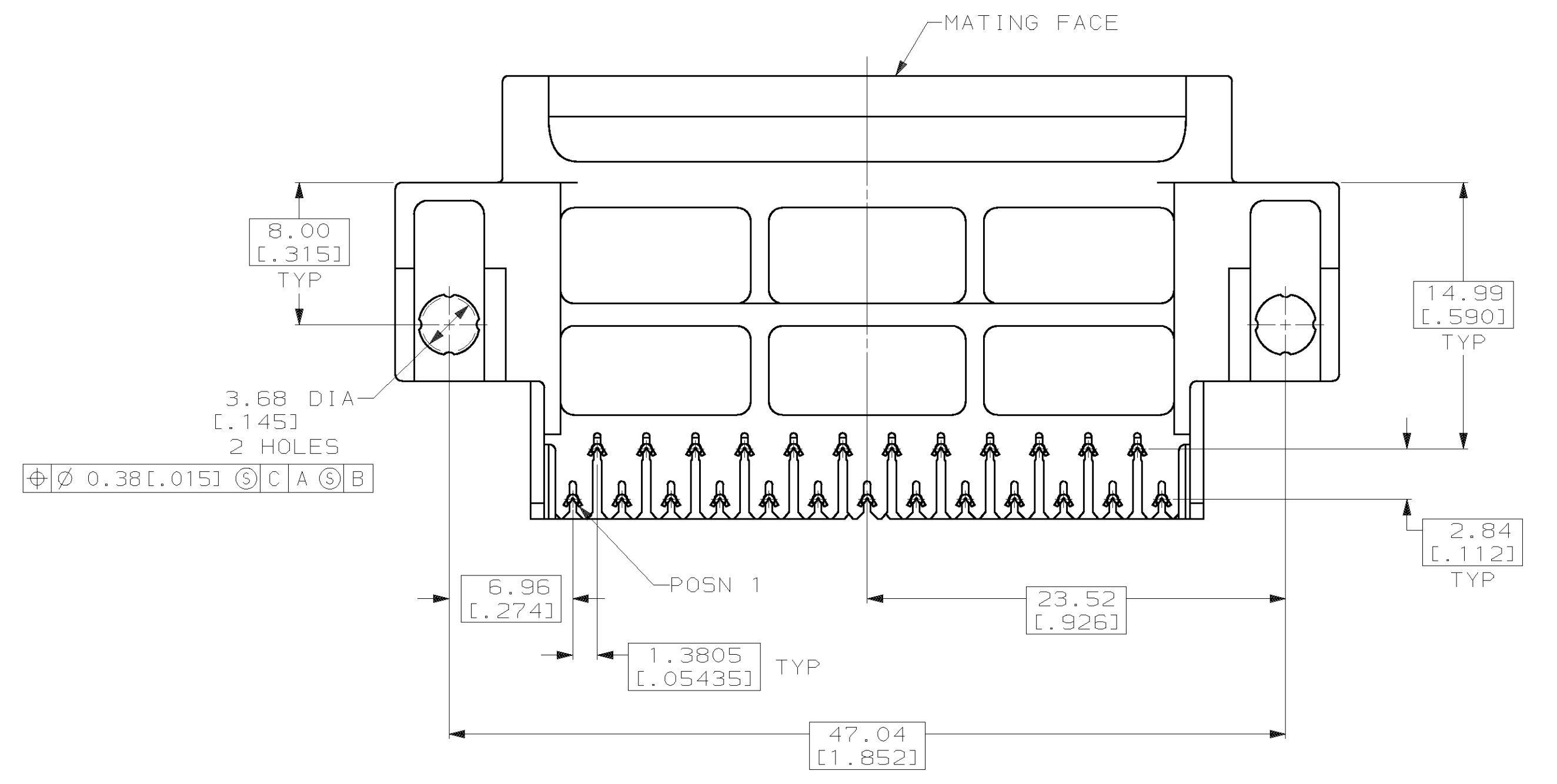
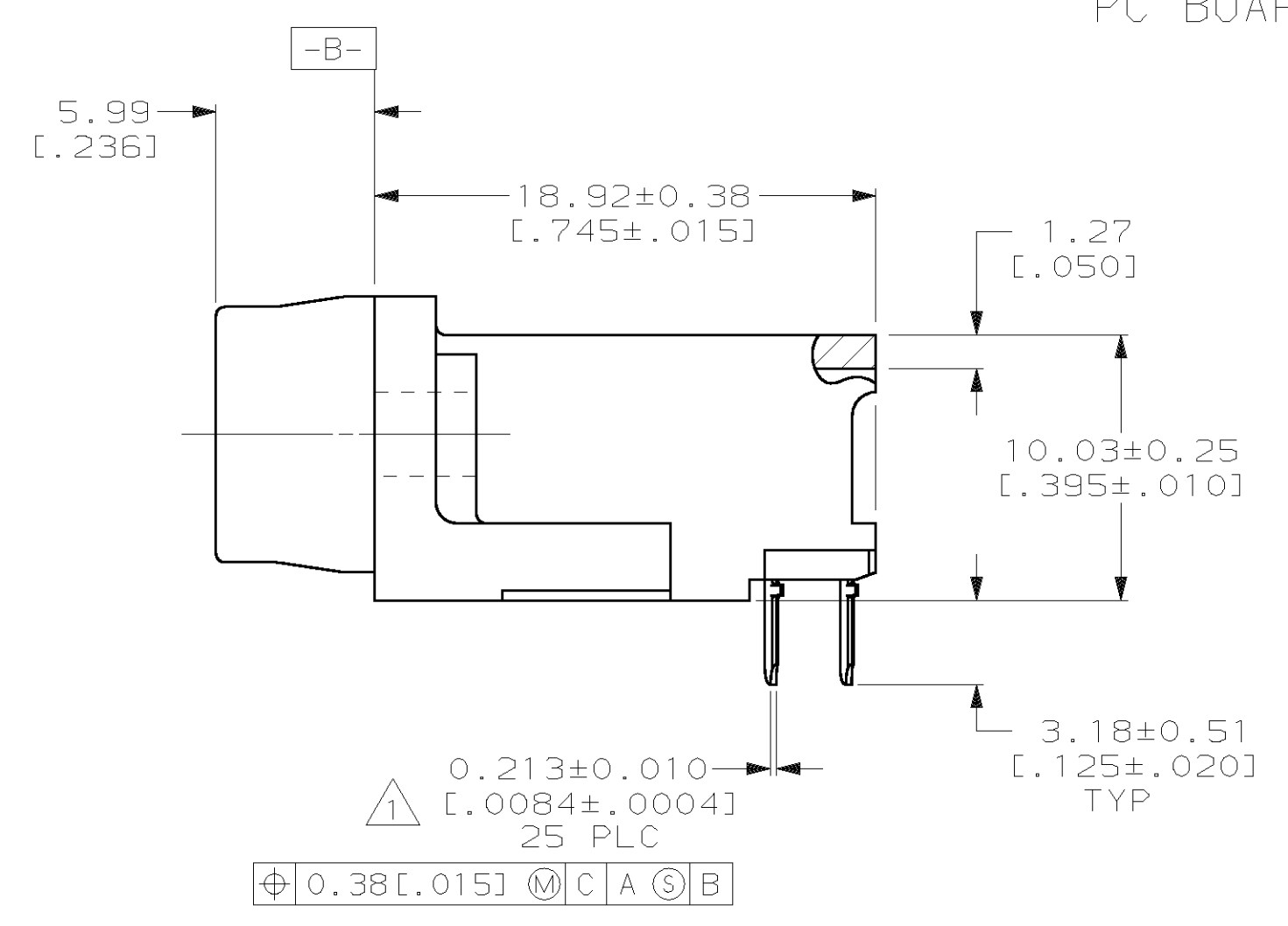
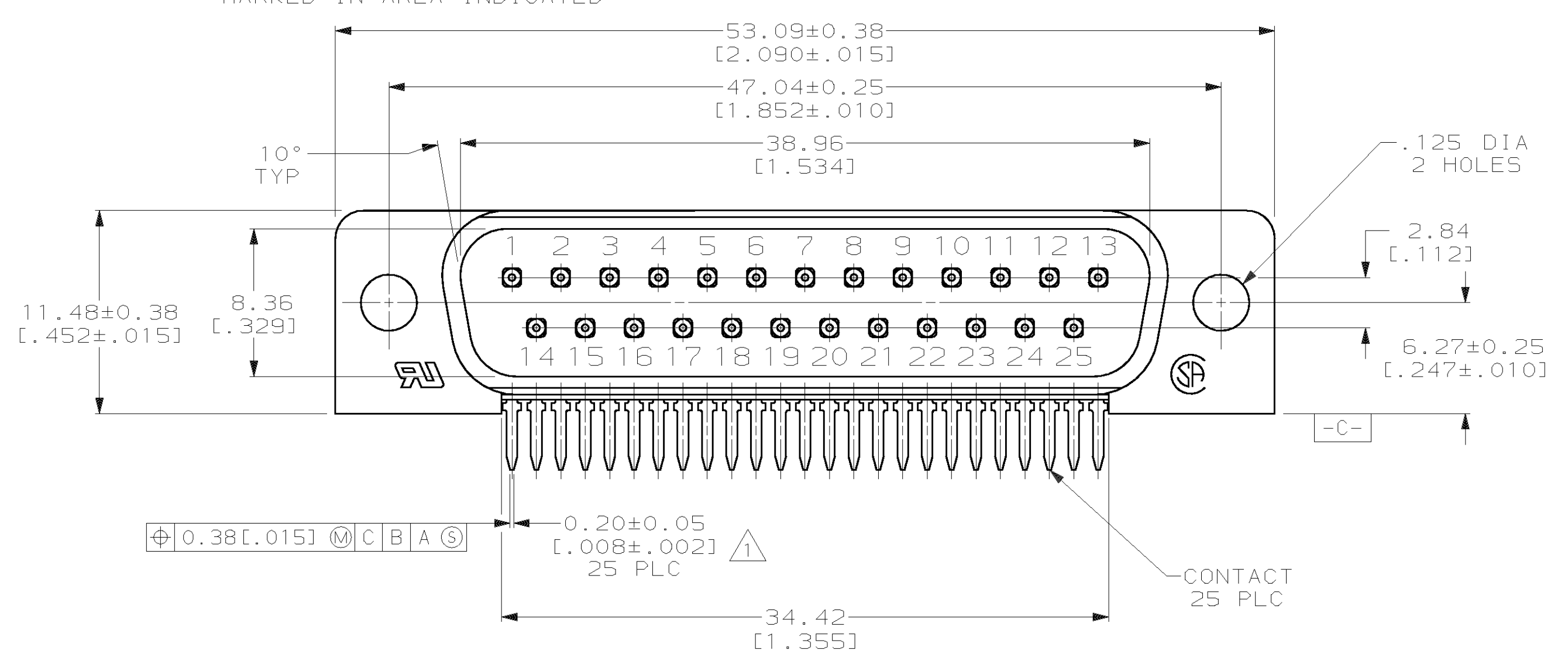
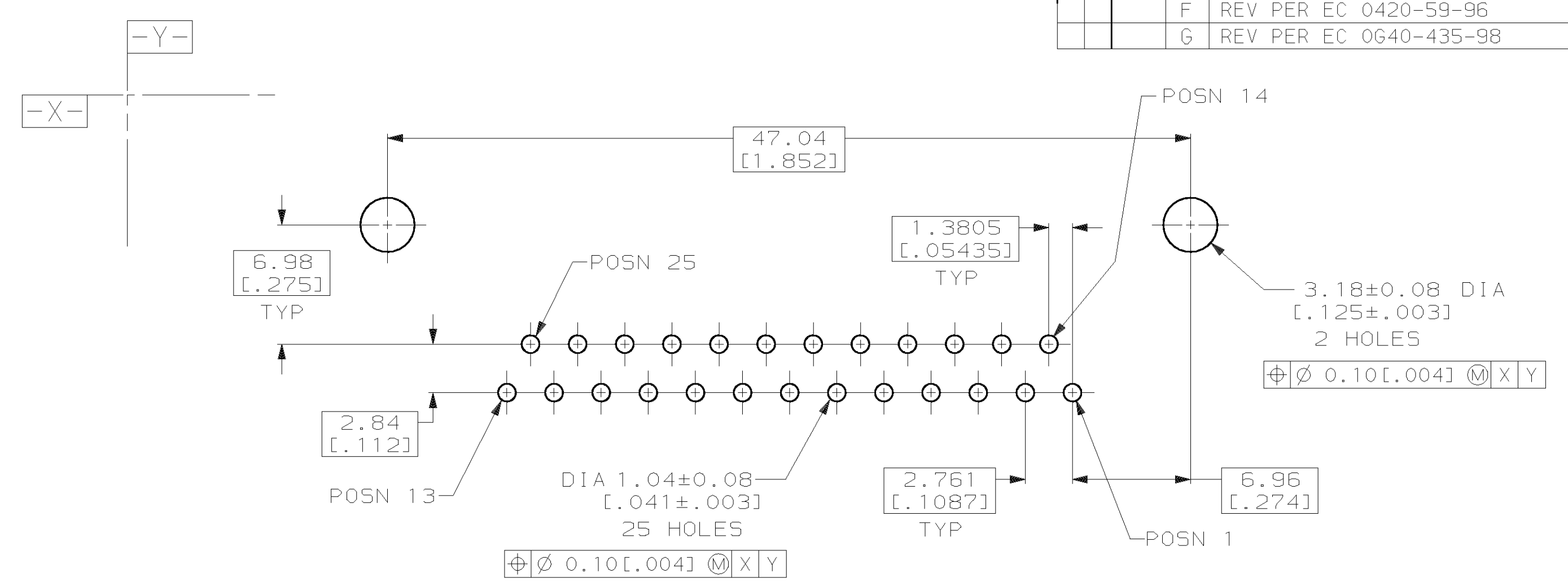
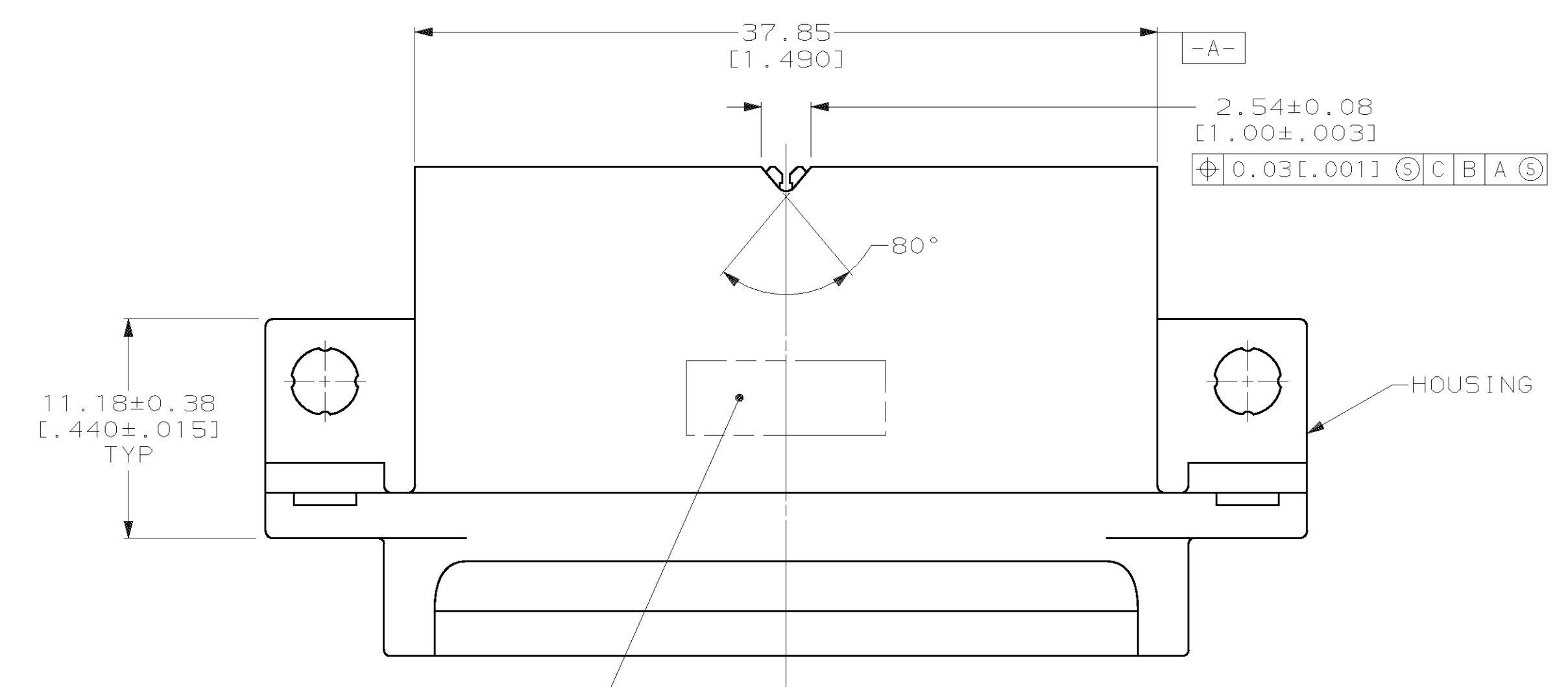


REVISONS		DATE	APPD
E	REV PER EC 0020-1053-95	05 JAN 96	RLT
F	REV PER EC 0420-59-96	20 SEP 96	RT
G	REV PER EC 0640-435-98	17 MAR 99	RT



- ① POSITION TOLERANCE APPLIES AT TIP ONLY.
- ② NYLON OR POLYESTER, UL94V-0, BLACK.
- ③ BRASS PER MIL-C-50
- ④ GOLD PLATING PER MIL-G-45204, NICKEL PLATING PER QQ-N-290, TIN PLATING PER MIL-T-10727.
- ⑤ GOLD PLATED FOR A LENGTH OF 3.81 [0.150] MIN FROM MATING END, 0.76µm [0.000030] MIN GOLD IN MATED AREA. 3.05µm [0.000120] MIN TIN-LEAD FOR A LENGTH OF 3.68 [0.145] MIN FROM OPPOSITE END, BOTH OVER 1.27µm [0.000050] MIN NICKEL.
- ⑥ GOLD PLATED FOR A LENGTH OF 3.81 [0.150] MIN FROM MATING END, GOLD FLASH IN MATED AREA. 3.05µm [0.000120] MIN TIN-LEAD FOR A LENGTH OF 3.68 [0.145] MIN FROM OPPOSITE END, BOTH OVER 1.27µm [0.000050] MIN NICKEL.

⑤	748826-2
⑥	748826-1
CONTACT FINISH	PART NO

DO NOT SCALE PRINT. UNLESS SPECIFIED DIMENSIONS IN mm [INCHES] TOLERANCES ON: 2 PLC DEC ± 0.13 [0.005] 3 PLC DEC ± - ANGLES ± 2°		DR 02/16/90 S.WELDON		AMP INCORPORATED Harrisburg, Pa. 17105	
CHK 3-6-90 R.STONE		APPD 3-8-90 J.SWAIN		NAME	
MATERIAL HOUSING: ② CONTACTS: ③		APPD 3-8-90 C.ROHDE		PRODUCT SPEC 108-1226	
FINISH ④ CONTACTS: SEE TABLE		APPLICATION SPEC 114-40027		SIZE D	CAGE CODE 00779
		WEIGHT -		SCALE 4:1	DRAWING NO 748826
					SHEET 1 OF 1