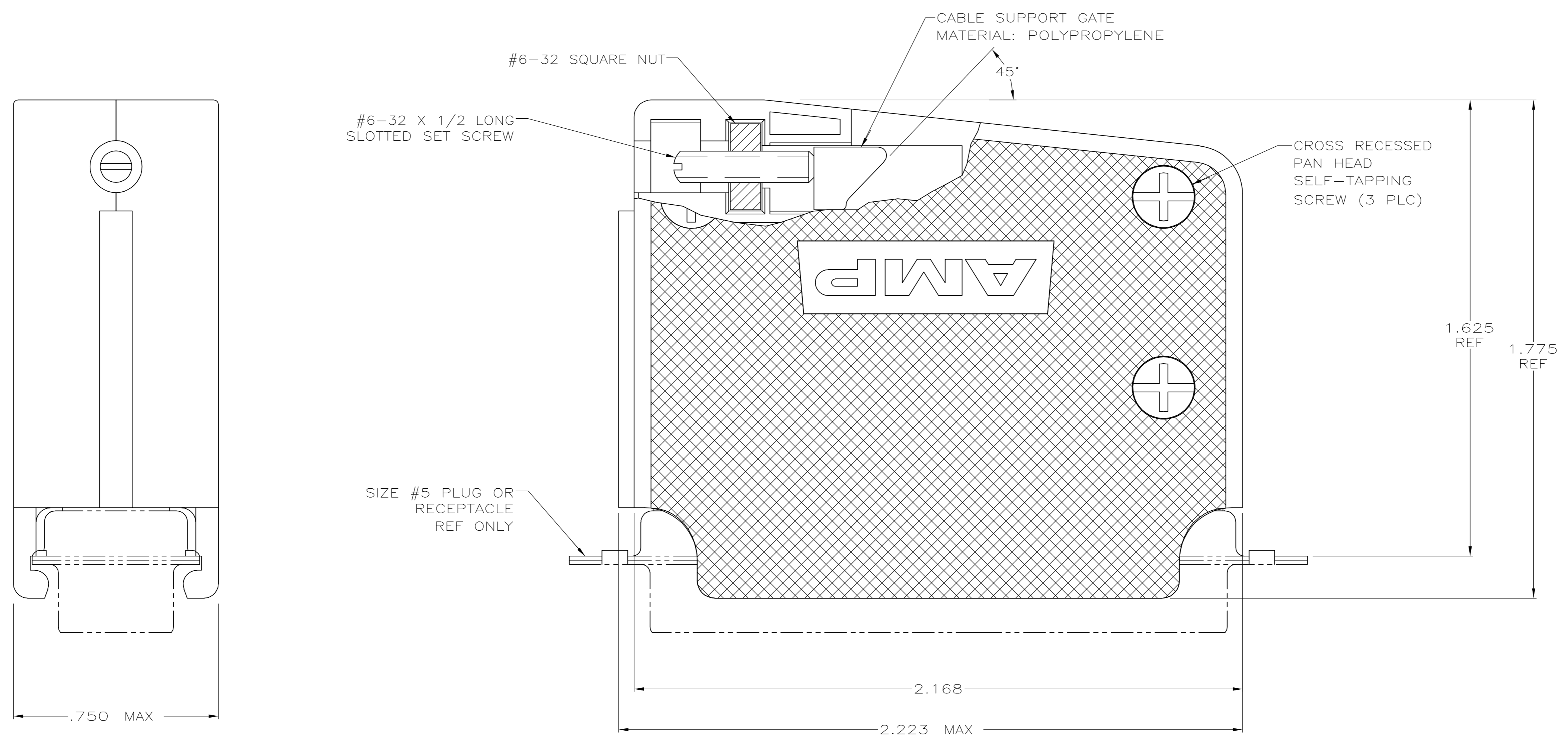
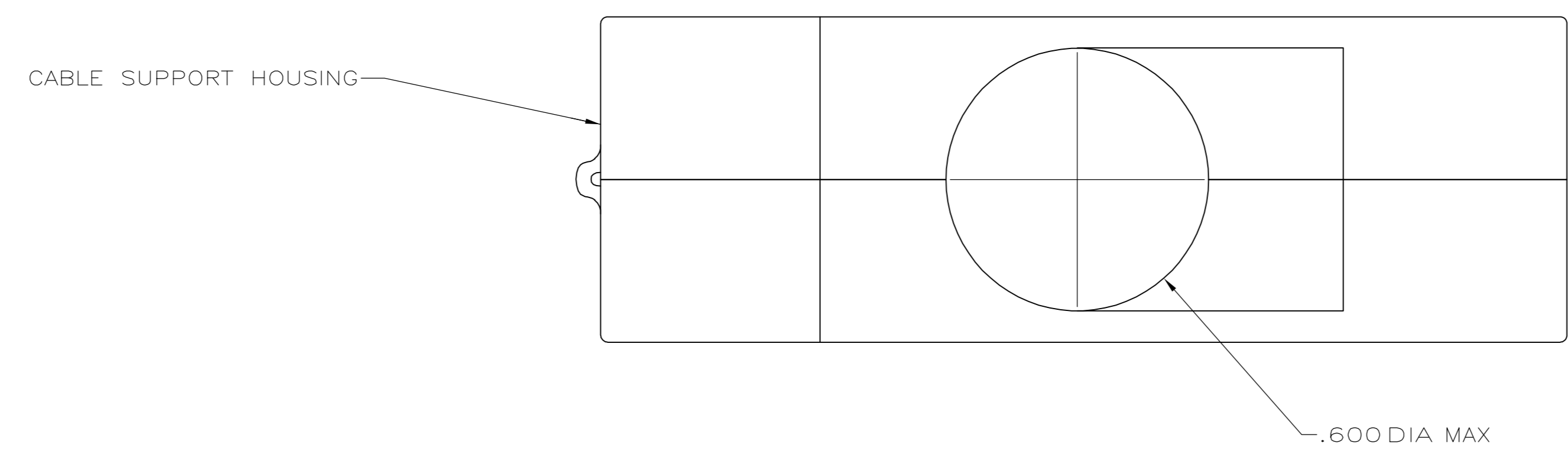


LOC		DIST		REVISIONS			
P	LTR	DESCRIPTION	DATE	OWN	APVD		
0		RELEASED PER EC 0513-0221-05	30AUG05	RR	JG		



- PARTS PACKAGED UNASSEMBLED.
- MOLDED PARTS: POLYPROPYLENE, BLACK. HARDWARE: COLD ROLLED STEEL.
- HARDWARE: ZINC PLATED, CLEAR CHROMATE COATING.

COMBINATION DRIVE	5205732-1
SCREW VERSION	PART NUMBER
Tyco Electronics Corporation Harrisburg, PA 17105-3608	
NAME: SELF TAPPED 45/180 DEG CABLE SUPPORT CLAMSHELL, SIZE #5 ASSY, AMPLIMITE	
SIZE	CAGE CODE DRAWING NO
A1	00779 C=5205732
CUSTOMER DRAWING	SCALE 4:1 SHEET 1 OF 1 REV 0

THIS DRAWING IS A CONTROLLED DOCUMENT.		DWN	R. RICHARDSON	30AUG05
DIMENSIONS:		CHK	C. ROHDE	30AUG05
INCHES		APVD	M. WALMSLEY	30AUG05
TOLERANCES UNLESS OTHERWISE SPECIFIED:		PRODUCT SPEC		
0 PLC	± -	APPLICATION SPEC		
1 PLC	± -	WEIGHT		
2 PLC	± -	MATERIAL		
3 PLC	± .005	FINISH		
4 PLC	± -	CUSTOMER DRAWING		
ANGLES	± -	SCALE 4:1 SHEET 1 OF 1 REV 0		