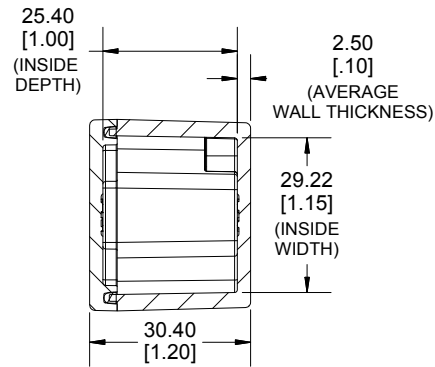
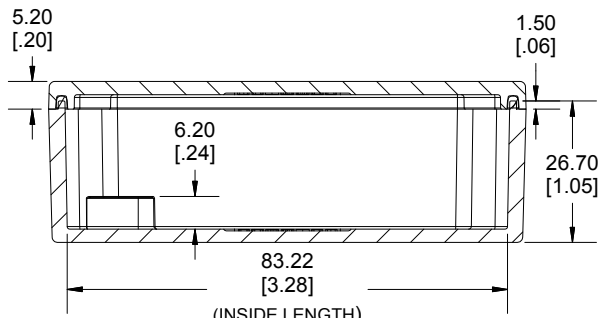


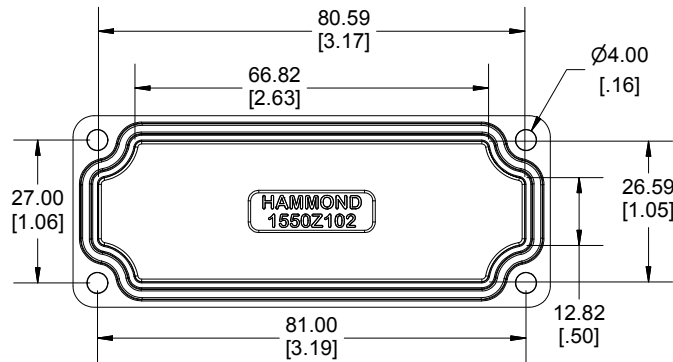
TOP VIEW



**SECTION A-A
END VIEW**



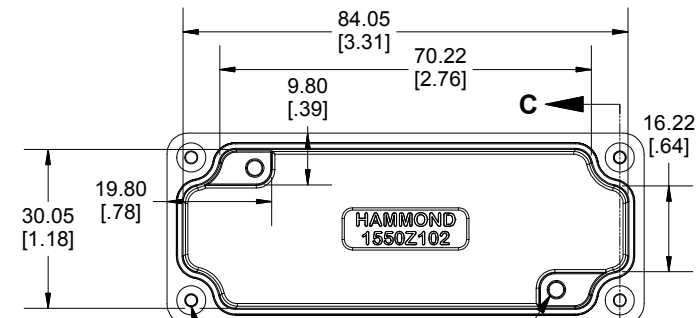
**SECTION B-B
SIDE VIEW**



INSIDE LID



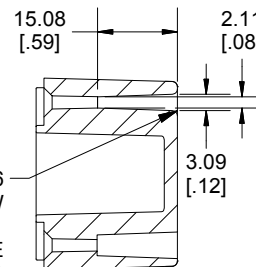
Enclosures can be Factory Modified (Milling, Drilling, Printing etc.)
 Contact Factory mjm@hammondmfg.com for quotes
 Solid models of this enclosure available in STEP or IGES.
 (Part number and text placement/orientation on our products are subject to change,
 we do not recommend using them as a locating reference for modification purposes)



INSIDE BOX

ACCEPTS M4 - 0.7
MACHINE SCREW

ACCEPTS
#6 SELF TAPPING
GROUND SCREW



**SECTION C-C
MOUNTING HOLE**

ACCEPTS #6
SELF-TAPPING SCREW

NOTE: THIS ENCLOSURE
NEEDS TO BE MOUNTED
FROM THE BOTTOM SIDE

NOTE	
Purchased assembly includes box, lid, silicone gasket, and 4 cover screws. Box and lid are made from Diecast Aluminum Alloy.	
Screws should not be torqued past 5-7.5 lbf.in (50 -75 cN.m)	
PART NUMBERS	
1550Z102 Enclosure	
Basic Enclosure	1550Z102
Black Enclosure	1550Z102BK
ACCESSORIES	
Pre-Formed Silicone Gasket	1550Z102GASKET

**HAMMOND
MANUFACTURING**

1550Z102

www.hammondmfg.com

Dimensions:
mm
[inches]