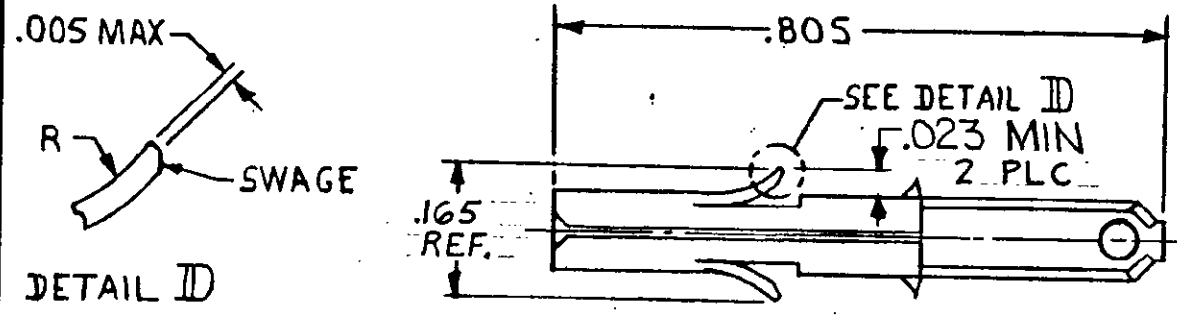
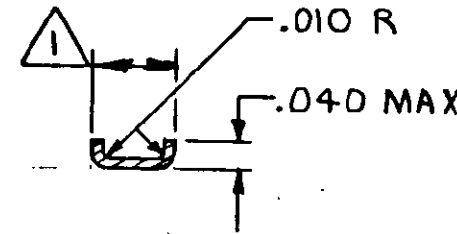
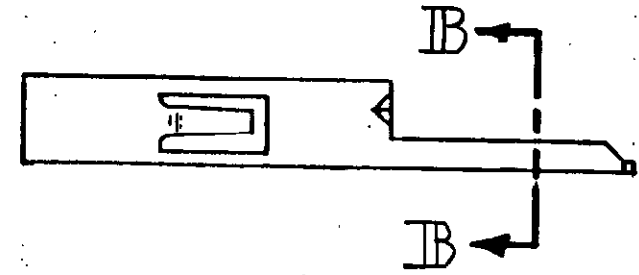
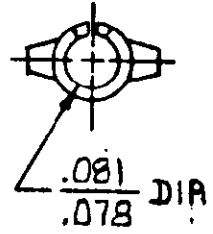


© COPYRIGHT 1976 BY AMP INCORPORATED, HARRISBURG, PA.  
 ALL INTERNATIONAL RIGHTS RESERVED. AMP INCORPORATED PRODUCTS  
 COVERED BY U. S. AND FOREIGN PATENTS AND/OR PATENTS PENDING.

		REVISIONS				
P	F	ZONE	LTR	DESCRIPTION	DATE	APPROVED
✓	✓		F	REDRAWN & UPDATED M-6457	6-5-81	MSF/SJH
✓			G	REVISED AG 57	10/21/83	SPR... S. JAMES
✓			G1	RESTORATION	4-23-85	SJ
✓			H	OBSOLETE -7 PER CM-1372	7-5-88	PH RS
✓			J	REV PER EC 0730-3607-91	1-6-94	RV RS
			K	REV PER EC 0130-0020-96	8-1-96	JH RS



DETAIL ID



SECTION B-B

⚠ FITS INTO "110" SERIES FASTON RECEPTACLE 350871-1.

PRE-TIN	.012 BRASS	350877-1
FINISH	MATERIAL	PART NO

UNLESS OTHERWISE SPECIFIED DIMENSIONS ARE IN INCHES. TOLERANCES ON: DECIMALS ±.015 ANGLES ±	CONTRACT NO	<b>AMP</b>   AMP INCORPORATED Harrisburg, Pa.	
	DR <i>m. Feher 4-20-81</i>		
WIRE RANGE	CHK <i>D.S. Heide 6/10/81</i>	NAME SOCKET, SPECIAL, UNIVERSAL MATE-N-LOK™	
	APPD <i>R. Poleshuk 6-10-81</i>	SIZE <b>B</b>	CODE IDENT NO <b>00779</b>
INSULATION RANGE	DSGN APPD	DRAWING NO <b>350877</b>	
	OTHER APPD	SCALE <b>4-1</b>	SHEET