

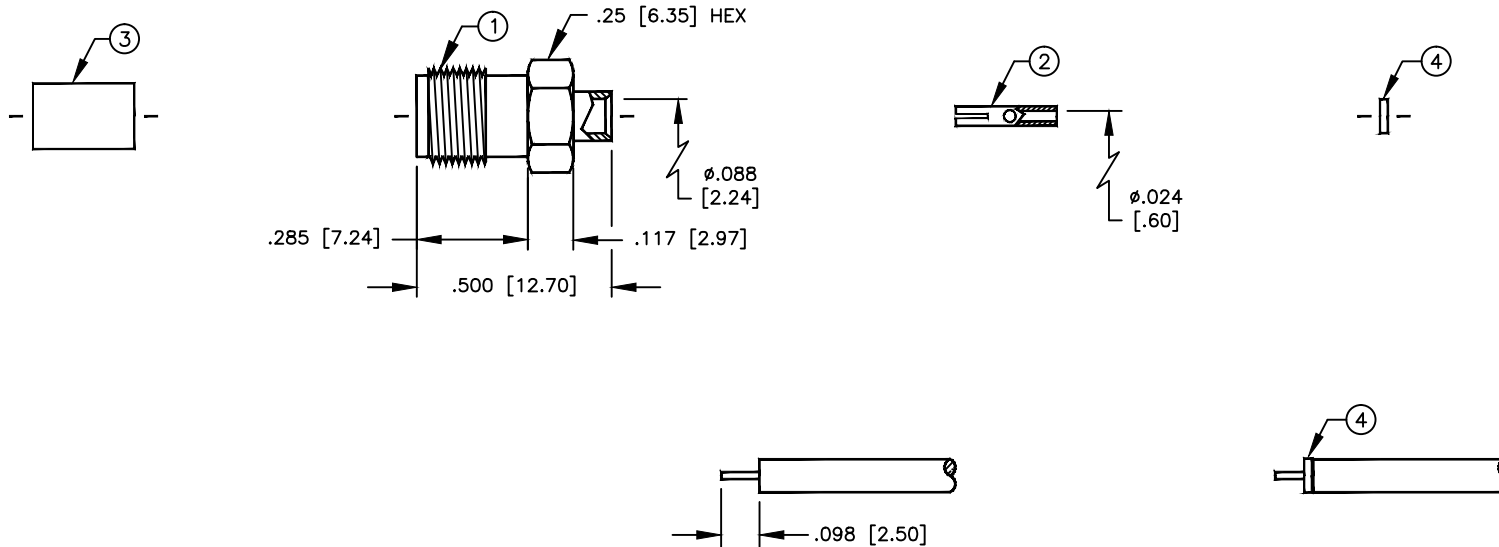
# SPECIFICATION CONTROL DRAWING

THIS DRAWING CONTAINS INFORMATION PROPRIETARY TO RF INDUSTRIES, LTD. ANY UNAUTHORIZED USE OF THIS DRAWING IS EXPRESSLY PROHIBITED. ANY VIOLATION IS PUNISHABLE UNDER U.S. COPYRIGHT LAWS.

REV	DESCRIPTION	DWN	DATE	APPROVED
A	ENGINEERING RELEASE	KMM	4/9/99	R. RICE

ALL DIMENSIONS ARE REFERENCE ONLY

008974



SUGGESTED STRIPPING INSTRUCTIONS  
PIN TO BE SOLDERED

PLACE SMALL DIELECTRIC ONTO CABLE  
BEFORE SOLDERING

## SPECIFICATIONS:

IMPEDANCE: 50 OHMS  
 WORKING VOLTAGE: 500V PEAK @ SEA LEVEL  
 FREQUENCY RANGE: 0-18 GHz  
 INSERTION LOSS: -.7 dB @ 18 GHz  
 VSWR MAX: 1.1:1 @ 18 GHz  
 FOR .085 SEMI RIGID, RG-405/U & BELDEN 1671A CABLE

DIMENSIONS ARE IN INCHES AND [MILLIMETERS]  
 UNLESS OTHERWISE NOTED TOLERANCES ARE:  
 DECIMALS DIAMETER  
 .XXX±.003 [.08] .XXX±.001 [.03]  
 .XX±.005 [.13] .XX±.003 [.08]  
 ANGLES: ±1°



7610 MIRAMAR RD  
 SAN DIEGO, CA 92126  
 (619)549-6340  
 (619)549-6345 FAX

## RSA-3555-SR1

SMA FEMALE SEMI RIGID

ITEM	DESCRIPTION	QTY	MATERIAL	FINISH
4	DIELECTRIC	1	PTFE	NONE
3	DIELECTRIC	1	PTFE	NONE
2	CONTACT	1	BeCu	GOLD
1	BODY	1	BRASS	NICKEL

DRAWN K. MAXWELL	4/9/99
CHECKED	
ORJ DRAWN K. MAXWELL	4/9/99
APPROVALS	DATE

SIZE A	CABLE GROUP SR1	DWG NO. 9159	REV A
SCALE: 2:1		CAD FILE 13ARC B	SHEET 1 OF 1