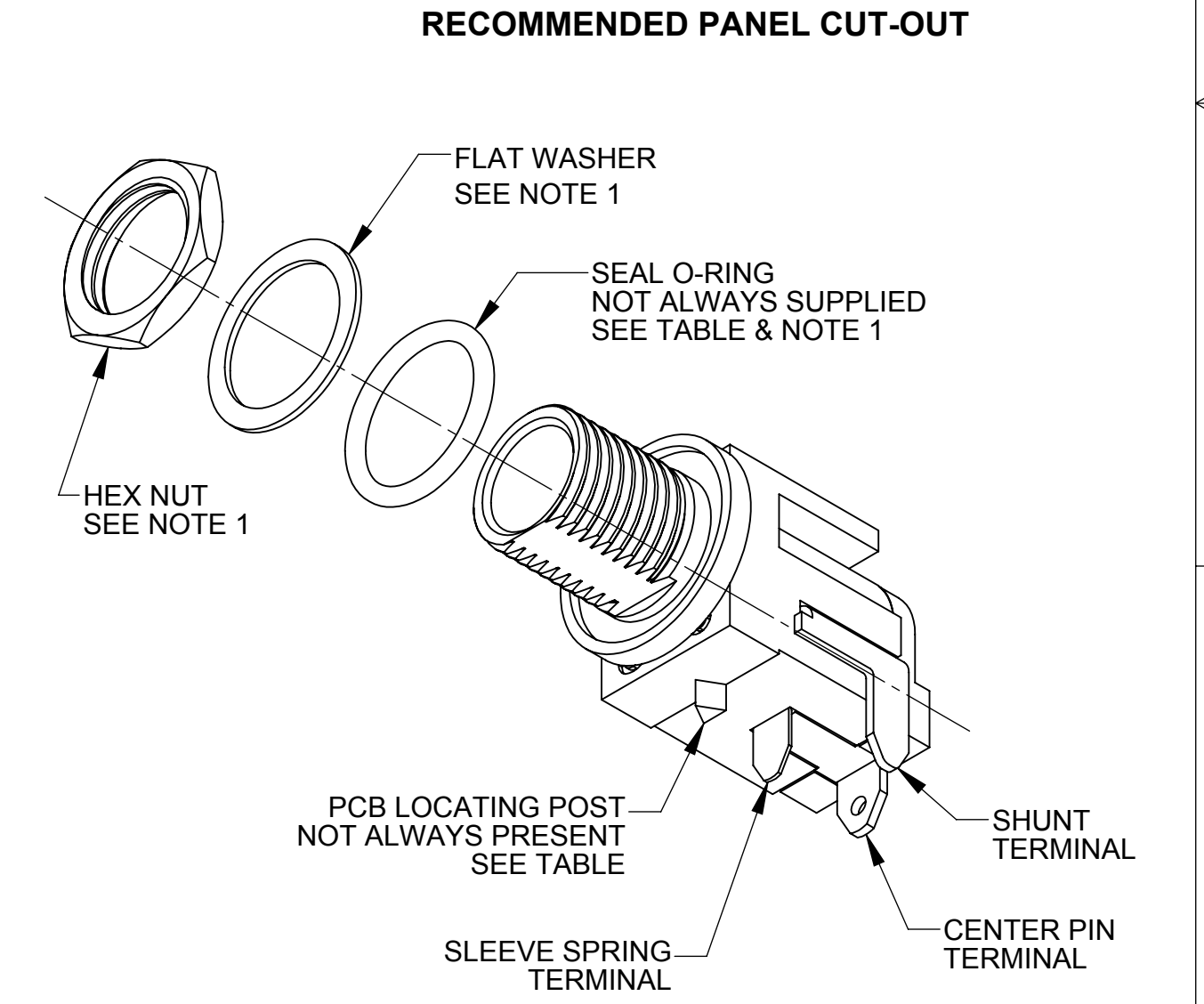
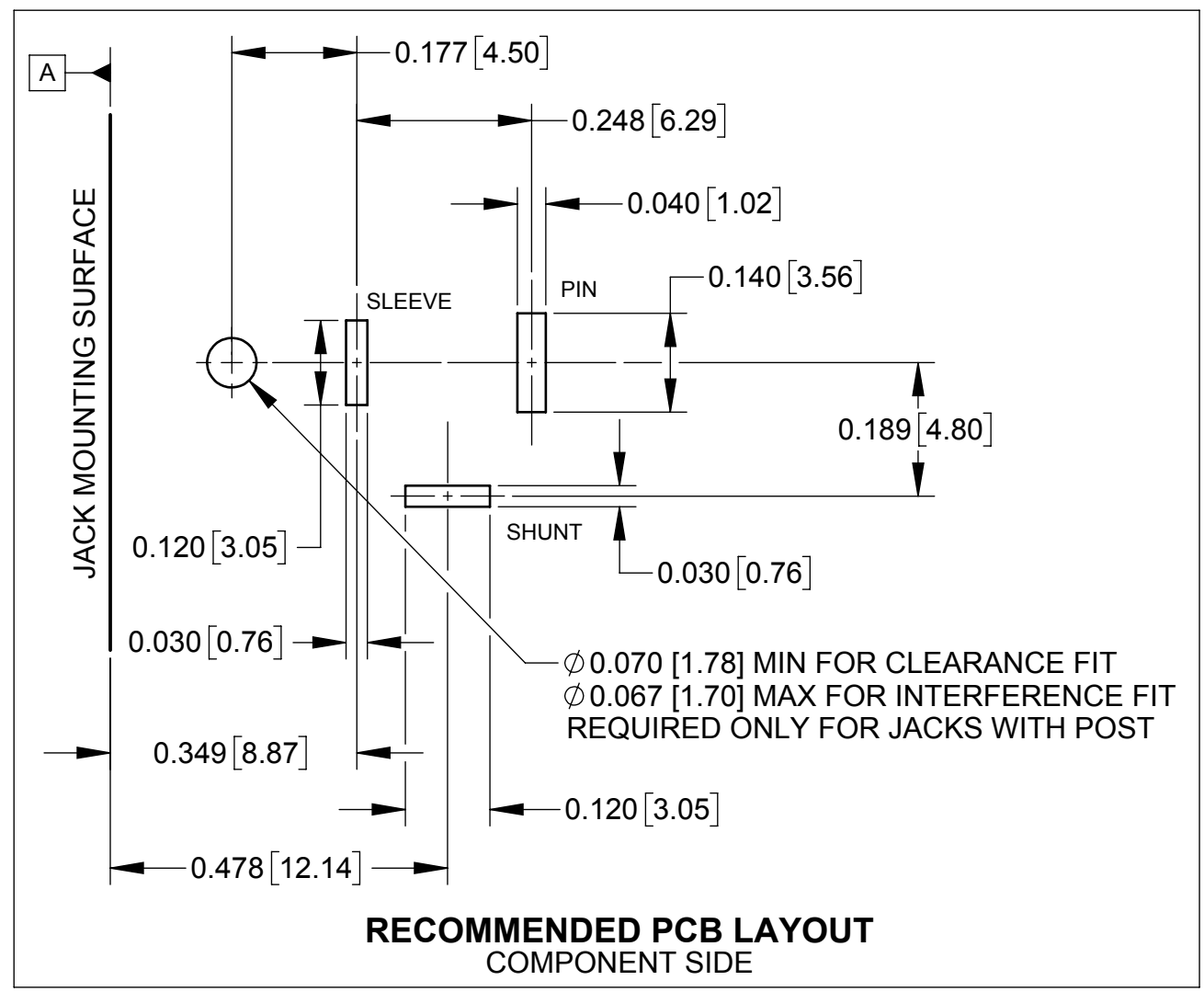
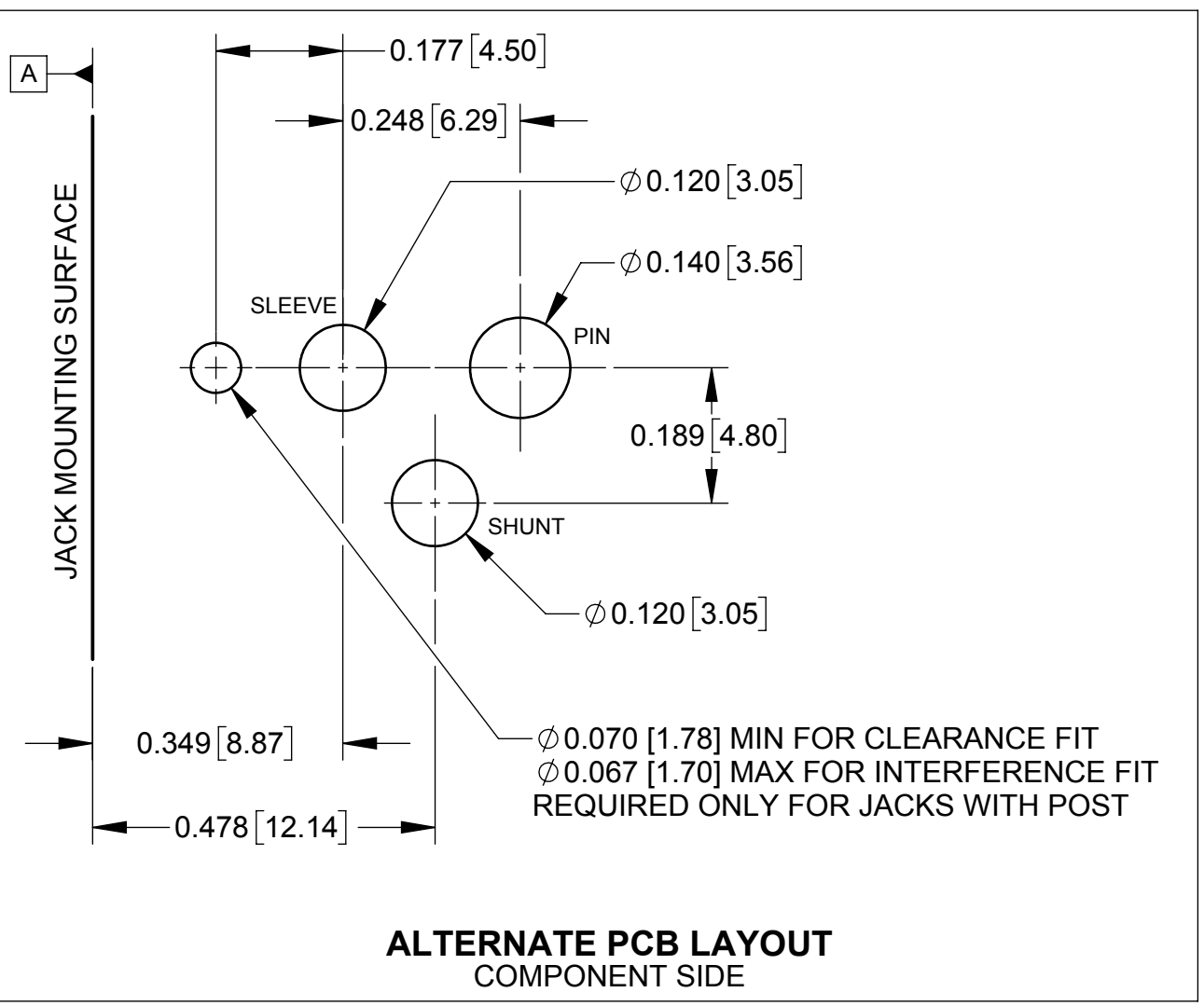
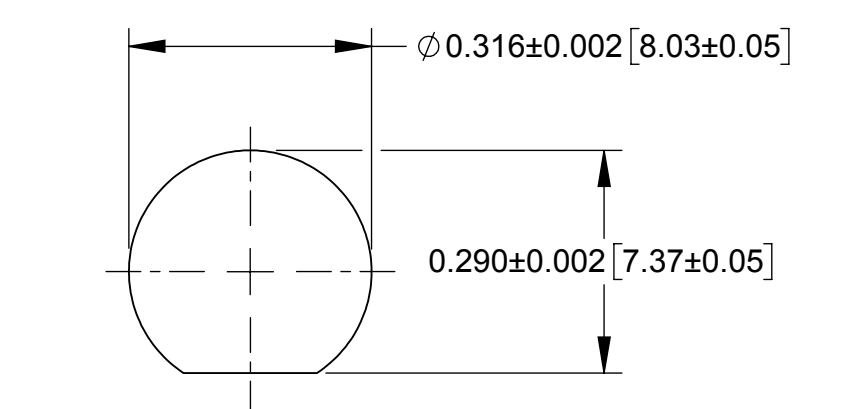
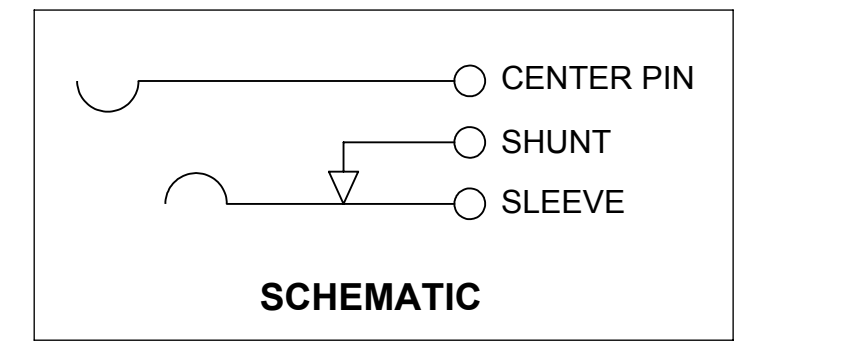
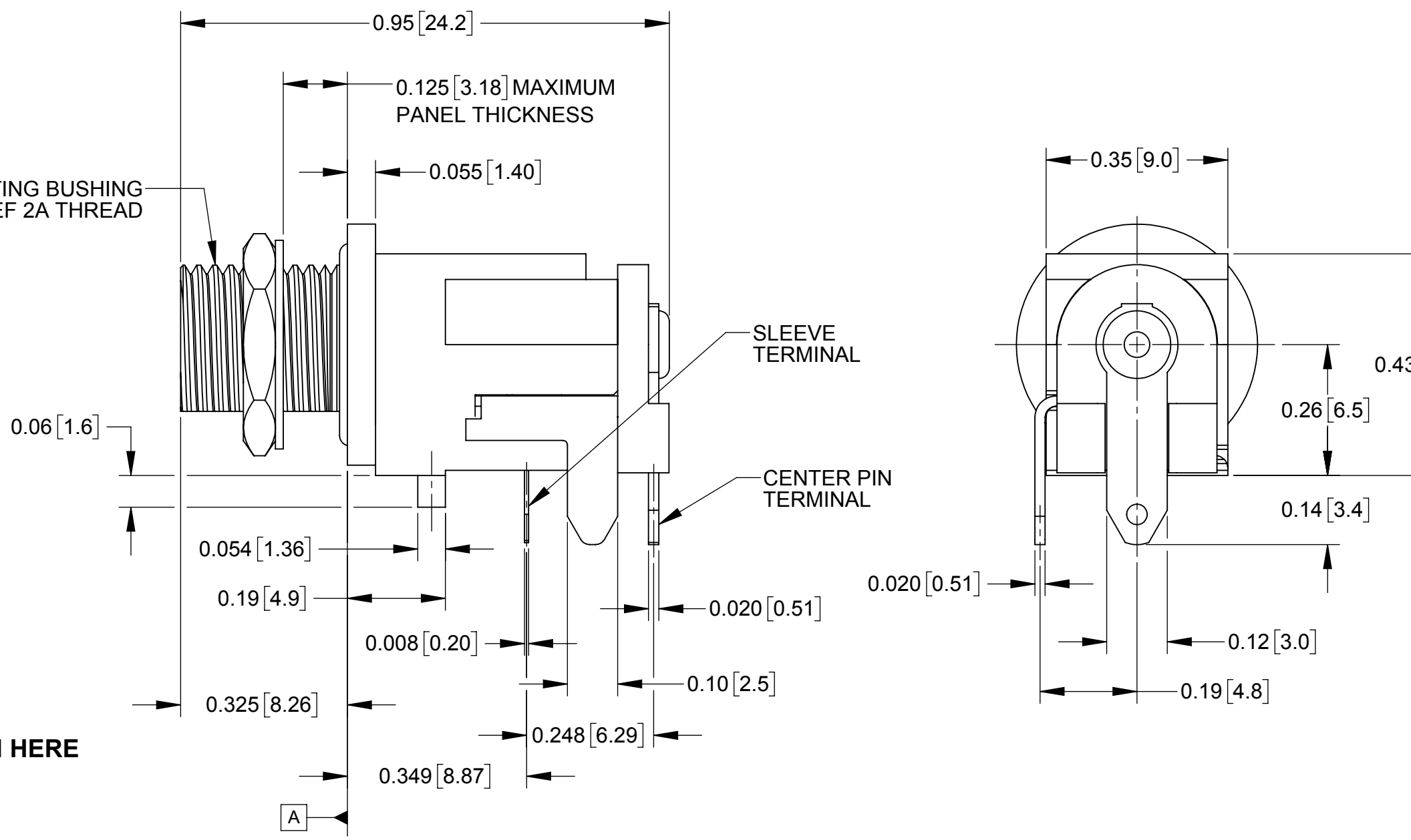
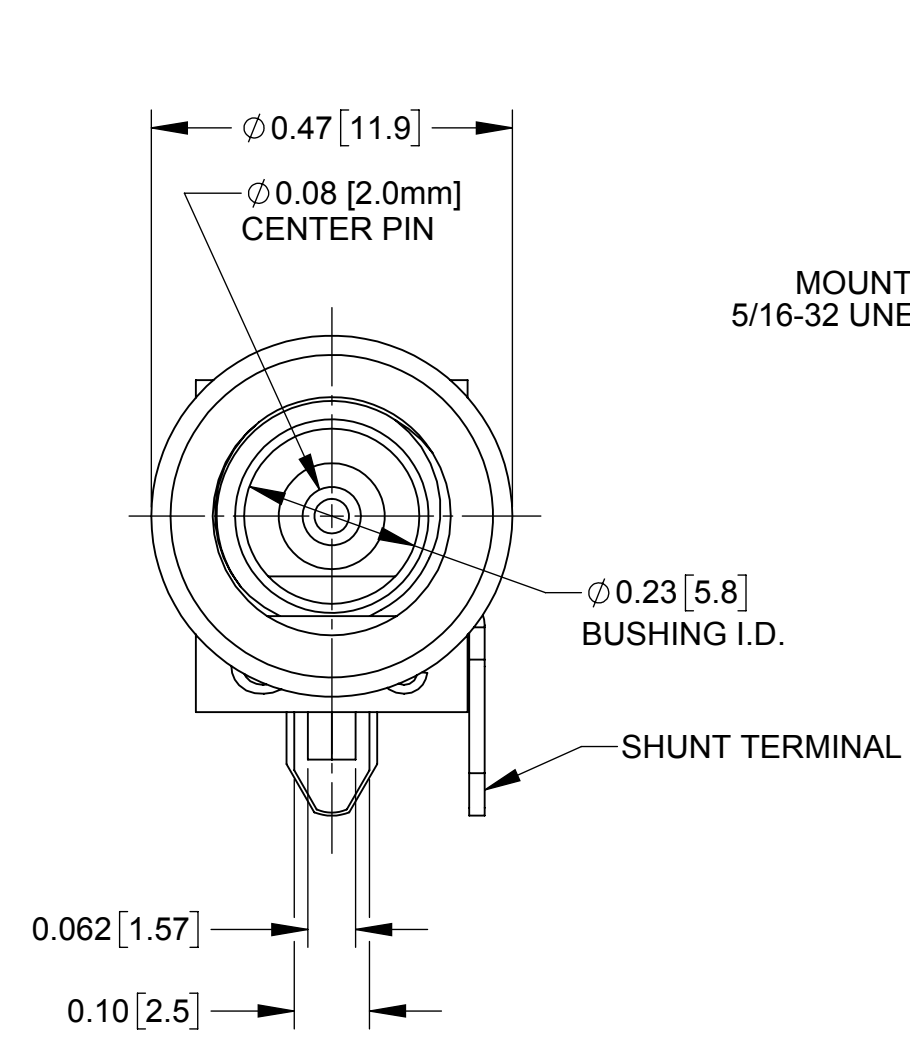


PART NUMBER	SEAL O-RING	PCB LOCATING POST	TERMINAL PLATING
RAPC10	NO	NO	SILVER
RAPC10S	YES		
RAPC10P	NO	YES	TIN
RAPC10PS	YES	NO	
RASPC10	NO	NO	TIN
RASPC10S	YES		
RASPC10P	NO	YES	TIN
RASPC10PS	YES	NO	



NOTES:
 1. HEX NUT, WASHER, AND O-RING (IF REQUIRED) SUPPLIED UNASSEMBLED.
 2. MATERIAL:
 HOUSING, COVER: THERMOPLASTIC, BLACK
 MOUNTING BUSHING, HEX NUT: COPPER ALLOY, NICKEL PLATED
 CENTER PIN: COPPER ALLOY, NICKEL PLATED
 PIN AND SHUNT TERMINALS: COPPER ALLOY, SILVER OR TIN PLATED
 SLEEVE SPRING TERMINAL: SPRING COPPER ALLOY, SILVER OR TIN PLATED
 FLAT WASHER: STEEL, NICKEL PLATED
 O-RING: ELASTOMER, BLACK
 3. THESE PRODUCTS ARE RoHS COMPLIANT.

REVISIONS					UNLESS OTHERWISE SPECIFIED					THIS DRAWING DESCRIBES A DESIGN CONSIDERED PROPRIETARY IN NATURE, DEVELOPED AND MANUFACTURED BY SWITCHCRAFT INC. AND IS RELEASED ON A CONFIDENTIAL BASIS FOR IDENTIFICATION PURPOSES ONLY.					
REV	ECO NUMBER	DATE	BY	APVD	1. ALL DIMENSIONS IN INCHES [mm] - TWO PLACE DECIMALS ±0.02 [0.5] - THREE PLACE DECIMALS ±0.005 [0.13]					SIZE	WIDTH	MULT	LBS/M	TEMPER	
B	27785	10/05/16	PC	TJK	FINISH SPEC No.					MATERIAL SPEC No.					
A	27139	04/29/13	PC	TJK	FIRST USED ON					SCALE 4:1					
					DATE DRAWN	BY	CHKD	APVD	Switchcraft®						
					02/16/12	PNK	PNK	SRC	SHEET 1 OF 1						
					NAME RA POWER JACKS, PC HIGH AMP, Ø0.08 [2.0mm] PIN, RoHS					PART No. RA_PC10 SERIES					
					DO NOT SCALE DRAWING					REV B					

CUSTOMER DRAWING