

REVISIONS					
P	LTR	DESCRIPTION	DATE	DWN	APVD
A		REVISED PER ECR-09-006557	25MAR2009	HMR	DD
AI		REVISED PER ECR-21-003871	15APR2021	SR	JL

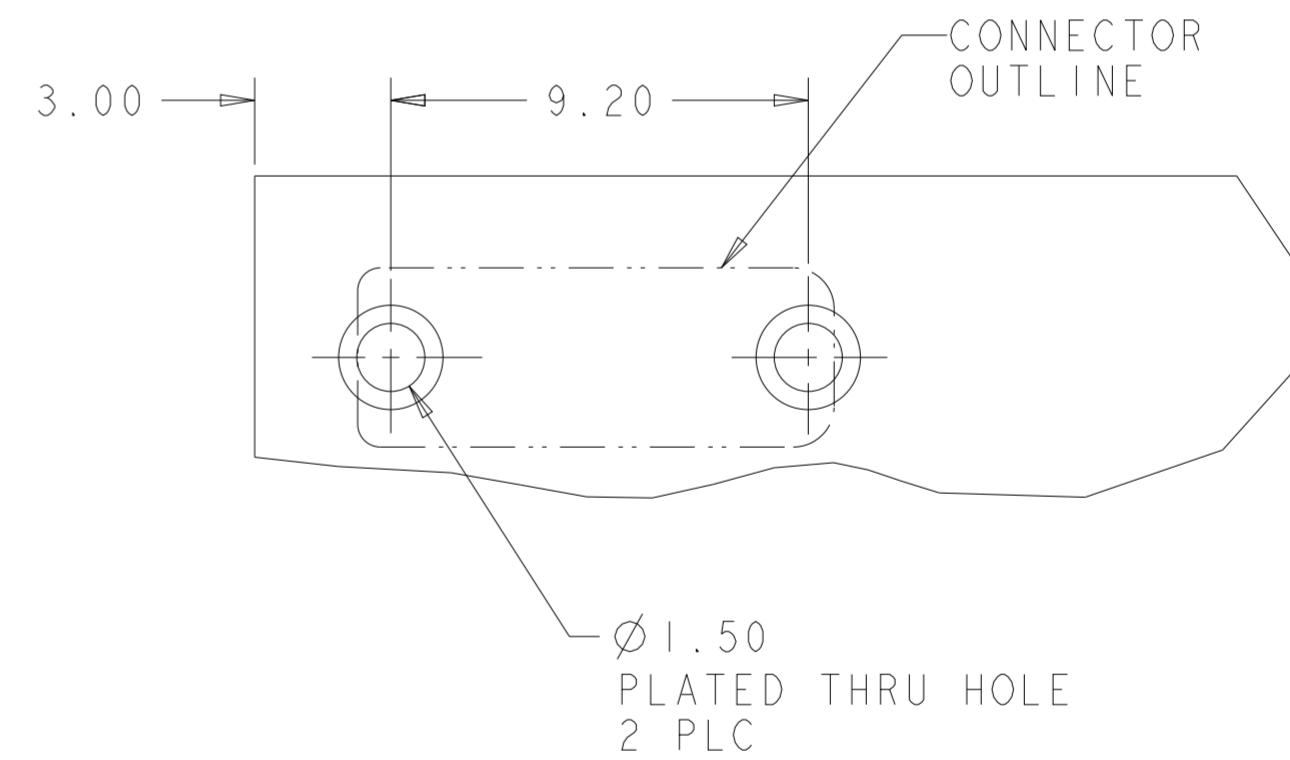
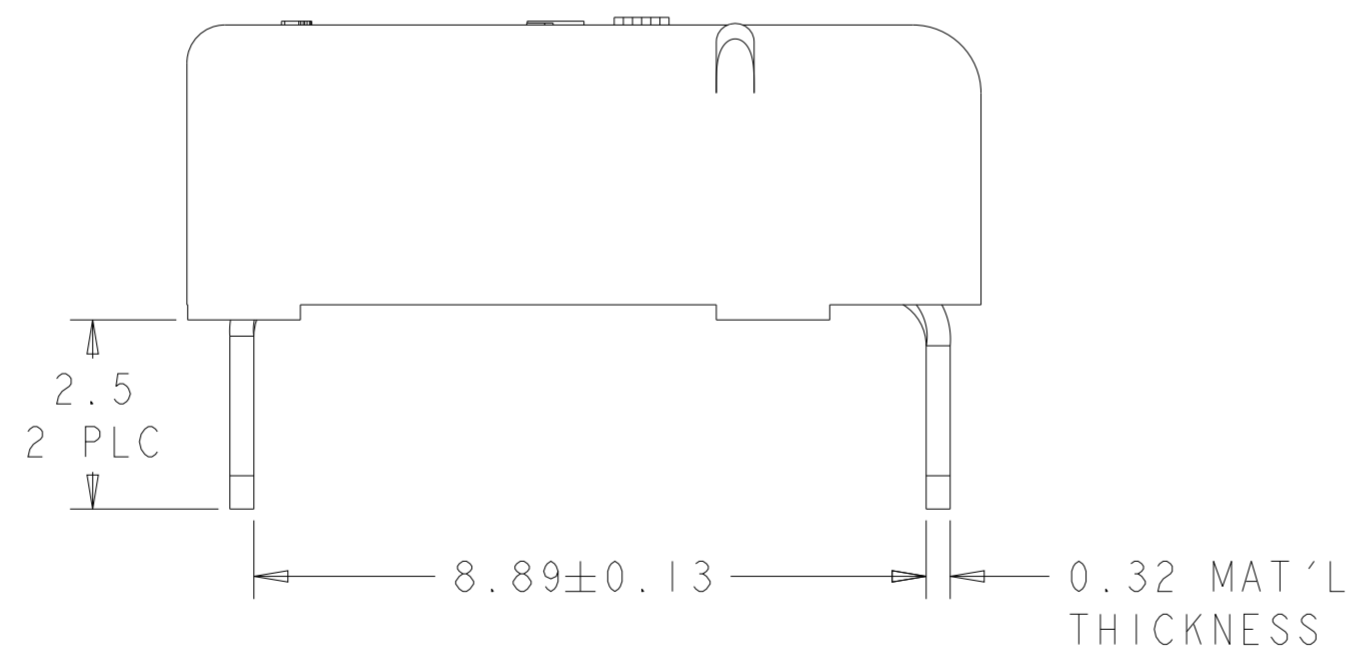
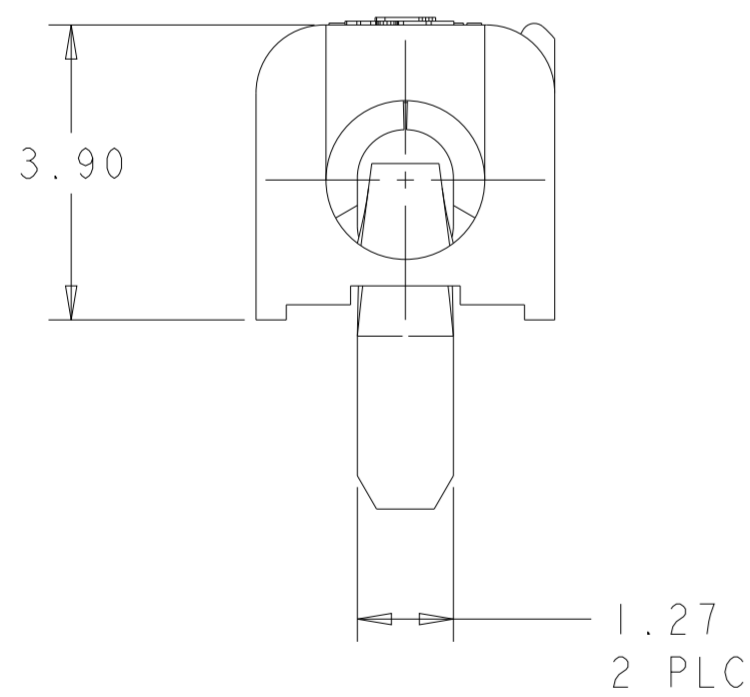
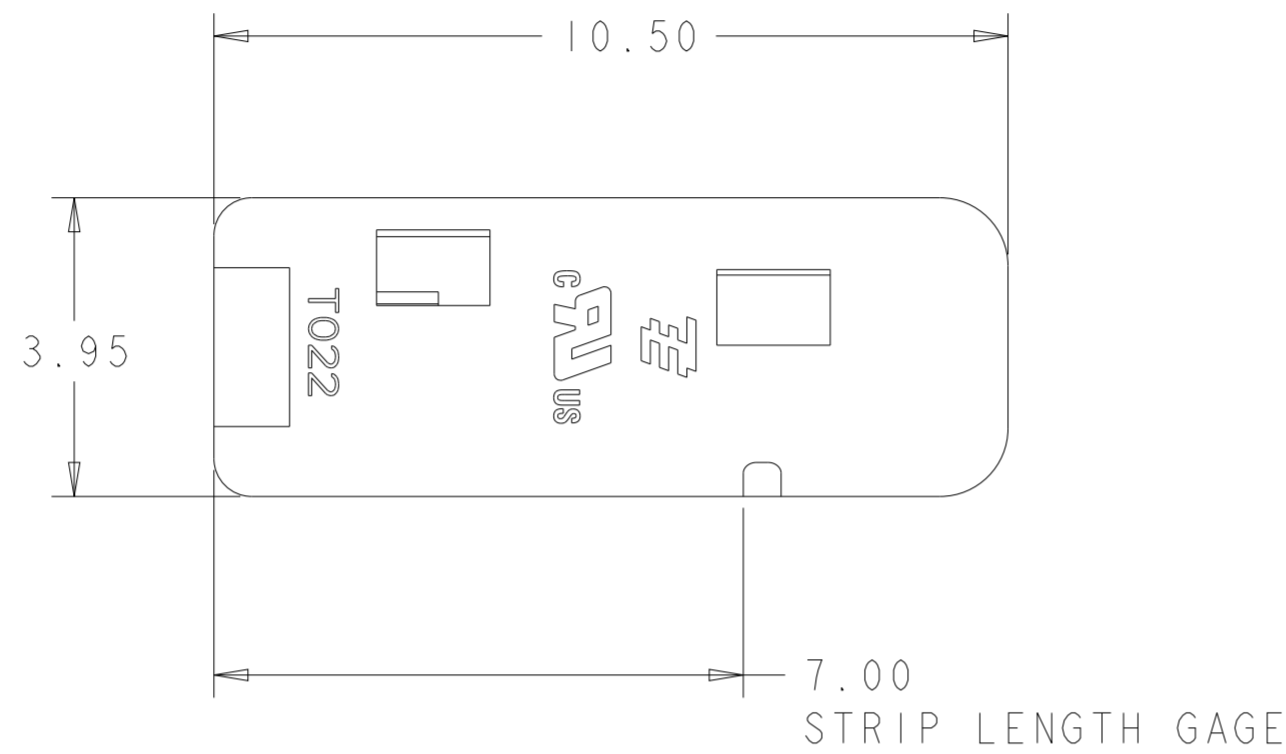
⚠ MATERIALS AND FINISH:
 - HOUSING: LCP, COLOR: WHITE
 - CONTACTS: COPPER ALLOY, FINISH: TIN

2. MUST COMPLY WITH DIRECTIVE 2002/95/EC (ROHS)

4. WIRE TYPES AND SIZES ACCEPTED
 18, 20 AND 22 AWG SOLID WIRE
 18 AND 20 AWG PREBOND STRANDED WIRE
 18 AWG STRANDED WIRE (16 STRAND COUNT)
 MAX INSULATION OD: 2.10 MM (.083")
 STRIP LENGTH: 7.0±1.0 (.276")

5. PACKAGED IN TAPE AND REEL

⚠ MATERIALS AND FINISH:
 - HOUSING: LCP, COLOR: BLACK
 - CONTACTS: COPPER ALLOY, FINISH: TIN

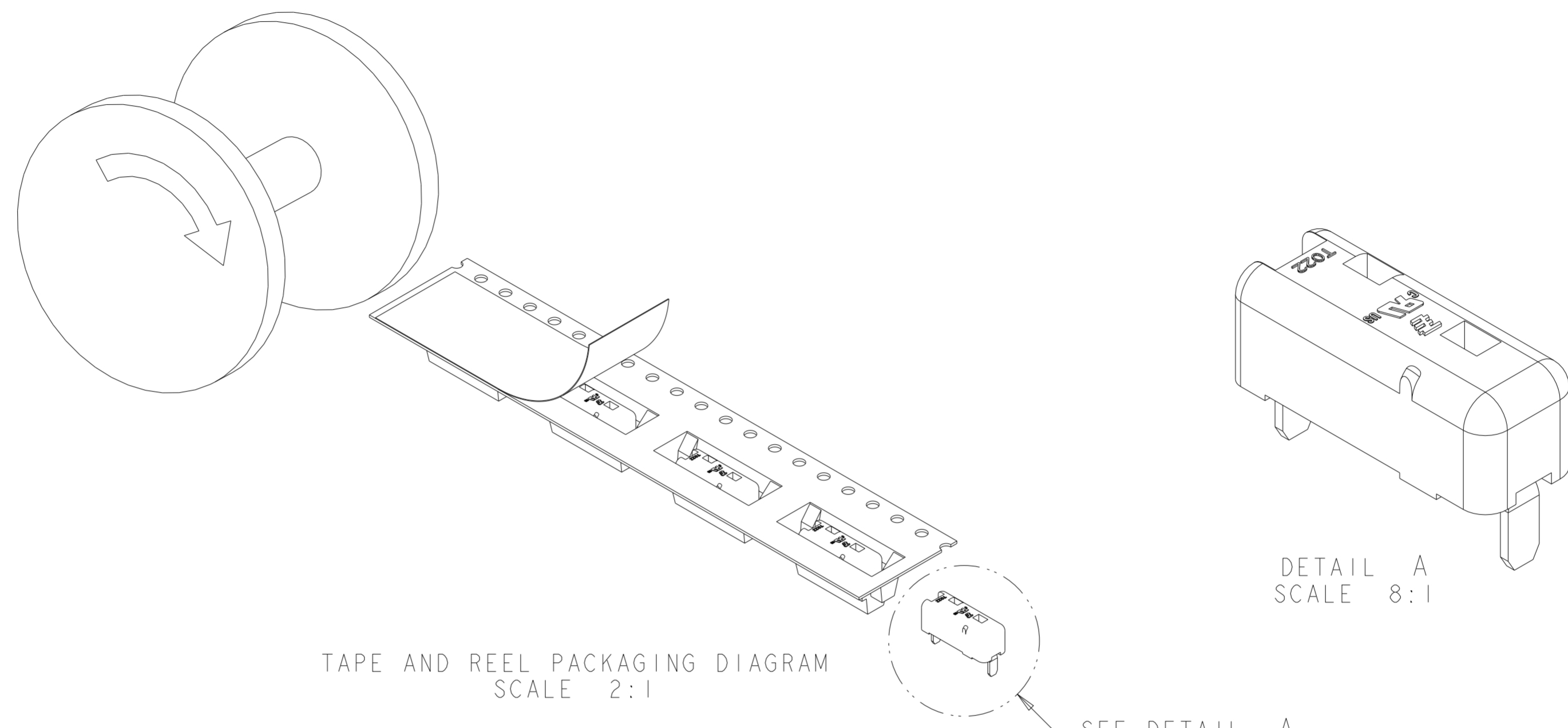


RECOMMENDED PCB LAYOUT
 SCALE 6:1

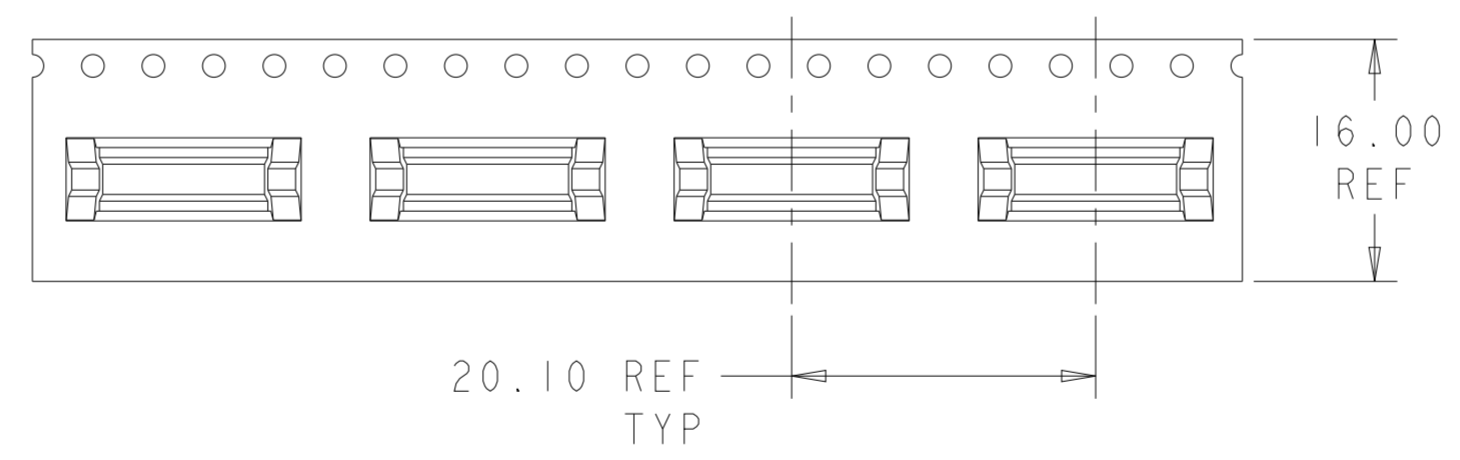
OBSOLETE	⚠	BLACK	2008839-2
	⚠	WHITE	2008839-1
	MATERIAL	COLOR	PART NUMBER

THIS DRAWING IS A CONTROLLED DOCUMENT.		DWN: 17OCT2007	STE TE Connectivity			
		CHK: GURURAJ S				
DIMENSIONS:	TOLERANCES UNLESS OTHERWISE SPECIFIED:	APVD:	NAME: POKE-IN LED CONNECTOR ASSEMBLY, 1 POSITION, THRU HOLE			
mm		PRODUCT SPEC:				
	0 PLC ±	APPLICATION SPEC:	SIZE:	CAGE CODE:	DRAWING NO:	RESTRICTED TO:
	1 PLC ±0.2		A2	00779	C-2008839	
	2 PLC ±0.13		SCALE 10:1		SHEET 1 OF 2	REV AI
	3 PLC ±		CUSTOMER DRAWING			
	4 PLC ±					
	ANGLES ±3					
MATERIAL:	FINISH:	WEIGHT:				
SEE TABLE	SEE TABLE					

REVISIONS					
P	LTR	DESCRIPTION	DATE	DWN	APVD
-		SEE SHEET 1	-	-	-



TAPE AND REEL PACKAGING DIAGRAM
SCALE 2:1



THIS DRAWING IS A CONTROLLED DOCUMENT.		DWN GURURAJ S	17OCT2007	STE TE Connectivity	
DIMENSIONS: mm		CHK -	APVD -		
TOLERANCES UNLESS OTHERWISE SPECIFIED: 0 PLC ± 1 PLC ±0.2 2 PLC ±0.13 3 PLC ± 4 PLC ± ANGLES ±3		PRODUCT SPEC -		RESTRICTED TO	
MATERIAL SEE TABLE		FINISH SEE TABLE		SIZE A2	CAGE CODE 00779
		WEIGHT -		DRAWING NO C-2008839	
		CUSTOMER DRAWING		SCALE 10:1	SHEET 2 OF 2
				REV A1	