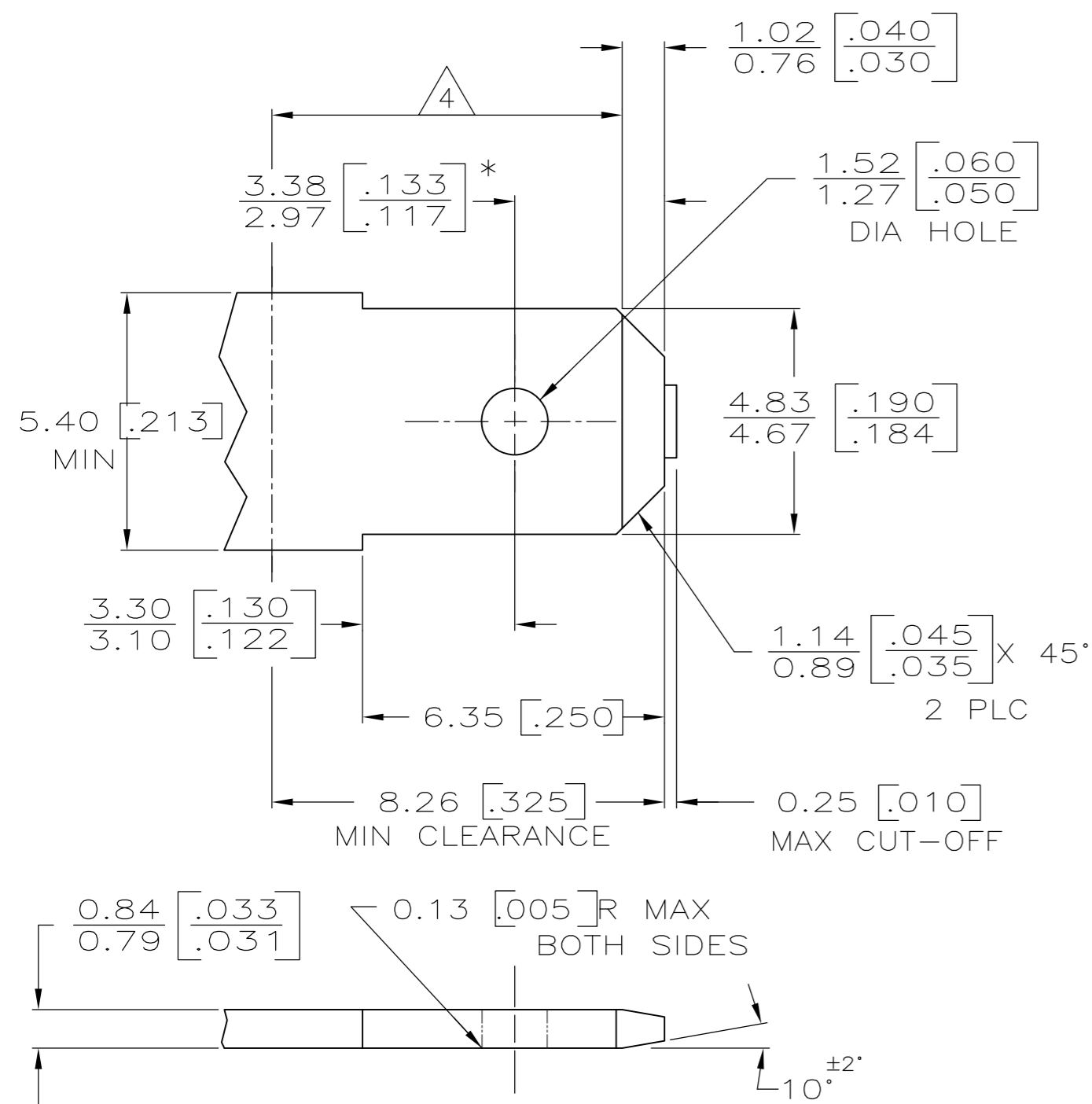


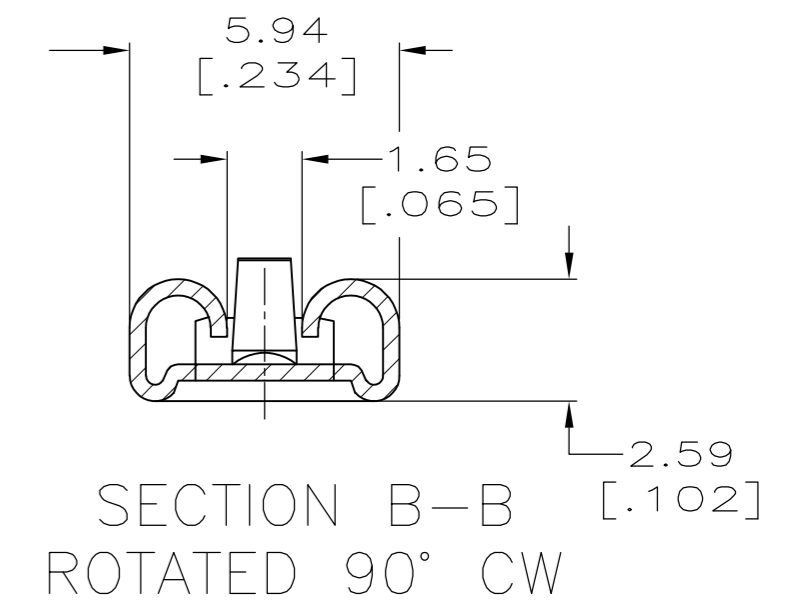
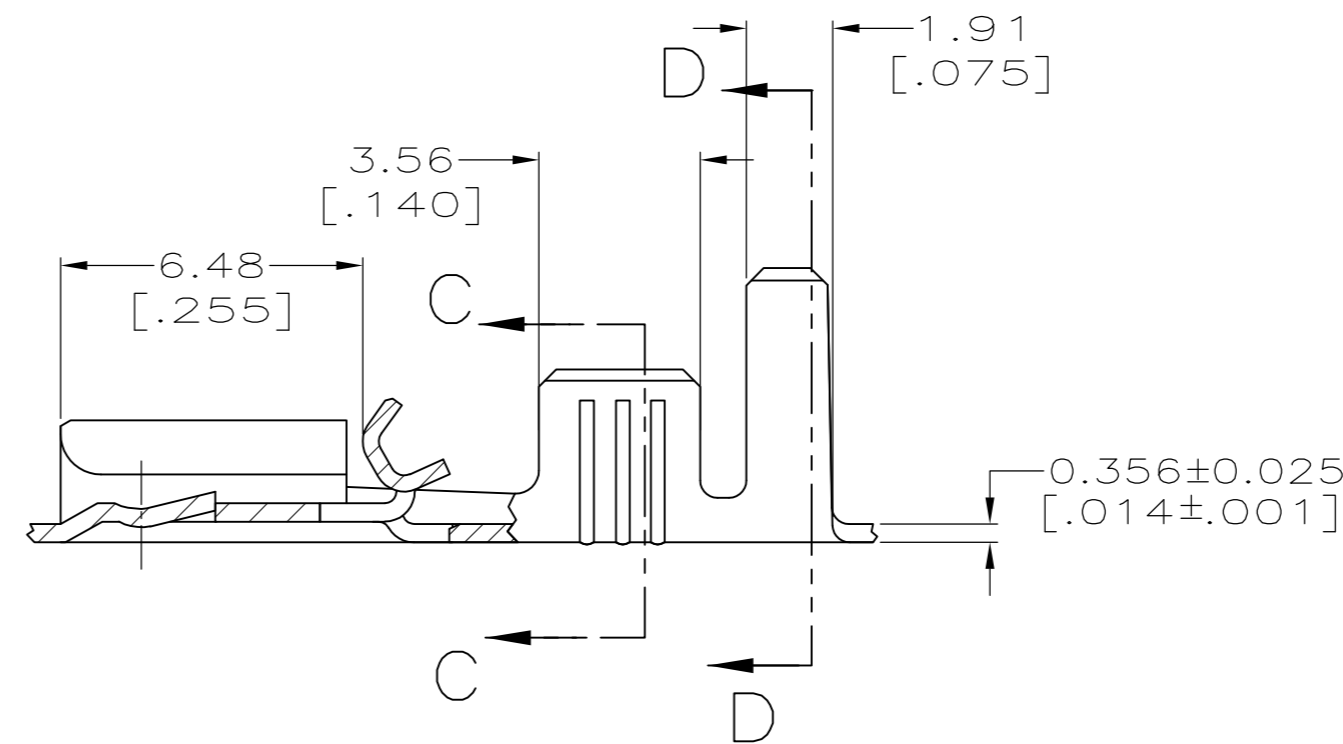
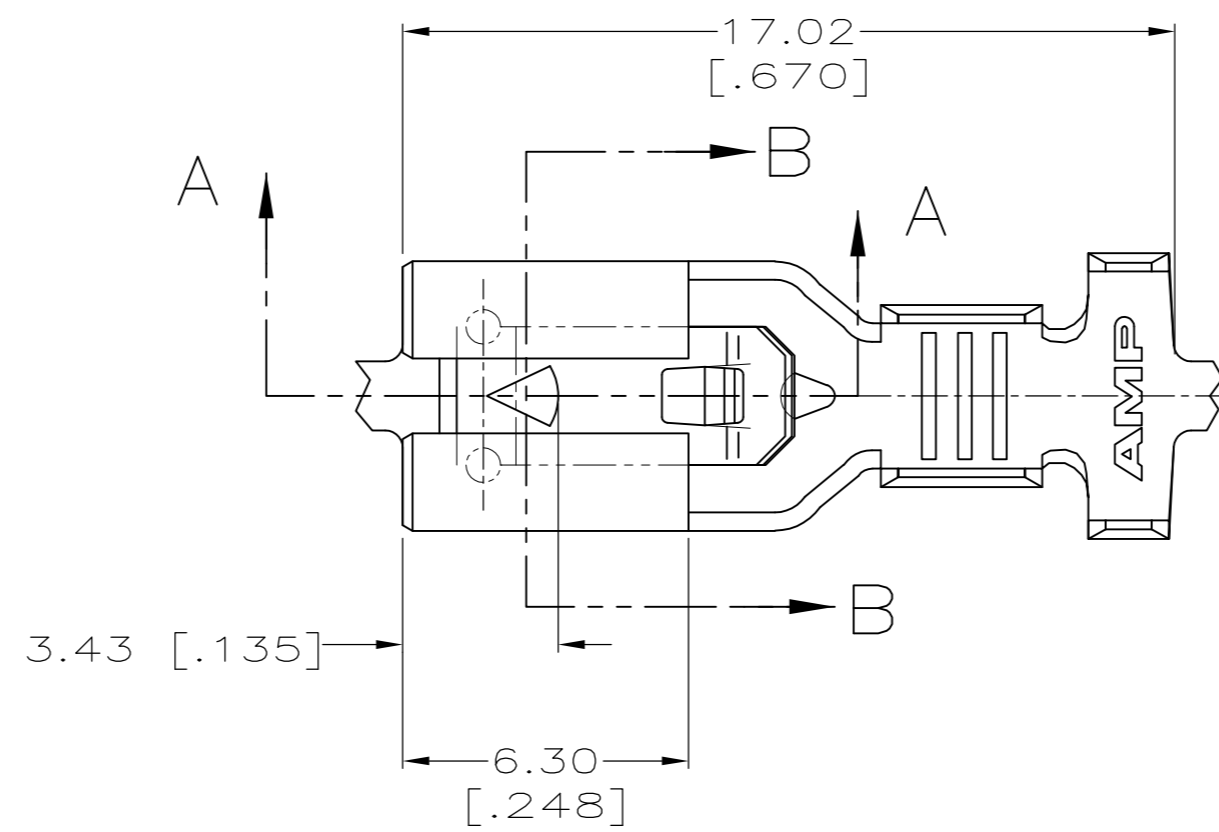
THIS DRAWING IS UNPUBLISHED. RELEASED FOR PUBLICATION  
 © COPYRIGHT - By - ALL RIGHTS RESERVED.

LOC	DIST	REVISIONS					
AF	50	P	LTR	DESCRIPTION	DATE	DWN	APVD
		D		REVISED PER ECR-13-011489	14DEC2013	KH	PD

SUGGESTED MATING TAB



- MATL: #2 HARD BRASS OR NICKEL PLATE STEEL.
  - NO BURRS PERMISSIBLE AT HOLE.
  - TIN PLATING IS REQUIRED ON BRASS WHEN TERMINAL TEMPERATURE IS OVER 225° F.
  - MUST BE FLAT WITHIN 0.076[.003] OVER THIS LENGTH.
  - HOLE MUST BE SYMMETRICAL ABOUT TAB & WITHIN 0.076[.003].
- \* TO BE USED ONLY WHEN SHOULDER IS ELIMINATED.



- CONTINUOUS STRIP ON REELS.
- ACCEPTS [#18-#14] SINGLE WIRE SIZES AND COMBINATION OF TWO [#18'S] WIRE CRIMP IS 3.05 [.120], F TYPE.
- FITS INSULATION RANGE OF 3.81-5.08 [.150-.200] DIA OR TWO WIRES AT 2.79 [.110] MAX DIA. INSULATION CRIMP IS 5.59 [.220], F TYPE

THIS DRAWING IS A CONTROLLED DOCUMENT.		DWN	JR RUTH	6/26/98	0.002032 [.000080] MIN TIN	1217096-2
DIMENSIONS: mm [INCHES]		CHK	MS FEHER	6/26/98	-	1217096-1
TOLERANCES UNLESS OTHERWISE SPECIFIED:		APVD	E HOWARD	6/26/98	FINISH	PART NO.
0 PLC	± -	PRODUCT SPEC	TE Connectivity			
1 PLC	± -	APPLICATION SPEC	RECEPTACLE, POSITIVE-LOCK, MARK III, 4.75 [.187] SERIES			
2 PLC	± 0.25 [.010]	WEIGHT	-	SIZE	A2	CAGE CODE
3 PLC	± -	CUSTOMER DRAWING	-	DRAWING NO	C=1217096	RESTRICTED TO
4 PLC	± -	SCALE	6:1	SHEET	1 OF 1	REV
ANGLES	± -					
FINISH	SEE TABLE					