

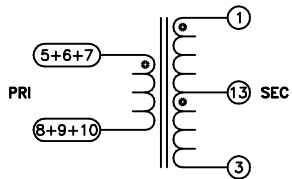
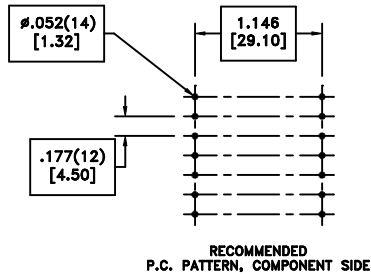
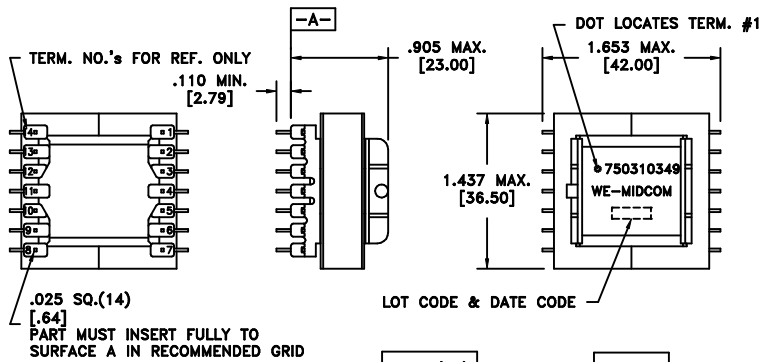
| | | |
|-------------------|------|---------------|
| CUSTOMER TERMINAL | RoHS | LEAD(Pb)-FREE |
| Sn100% | Yes | Yes |

more than you expect



ELECTRICAL SPECIFICATIONS @ 25°C unless otherwise noted:

| PARAMETER | TEST CONDITIONS | VALUE |
|--------------------------|---|-----------------------------|
| D.C. RESISTANCE | 7-8 tie(5+6+7, 8+9+10), @20°C | 0.010 ohms max. |
| D.C. RESISTANCE | 1-3 @20°C | 0.500 ohms max., 0.120 typ. |
| INDUCTANCE | 7-8 tie(5+6+7, 8+9+10), 50kHz, 10mVAC, Ls | 5.0uH ±10% |
| SATURATION CURRENT @85°C | 20% rolloff from initial | 25ADC |
| CONTINUOUS CURRENT | 40°C temp rise from ambient | 18A |
| LEAKAGE INDUCTANCE | 7-8 tie(1+3, 5+6+7, 8+9+10), 100kHz, 1.0VAC, Ls | 100nH max. |
| DIELECTRIC | PRI-SEC 1250VAC, 1 second | 1000VAC, 1 minute |
| TURNS RATIO | (13-3):(1-13) | 1:1, ±1% |
| TURNS RATIO | (1-3):(5-10) | 10:1, ±1% |
| TURNS RATIO | (1-3):(6-9) | 10:1, ±1% |
| TURNS RATIO | (1-3):(7-8) | 10:1, ±1% |



| REV. | DATE | Packaging Specifications | CONVENTION PLACEMENT |
|------|------|--|----------------------|
| | | Method: Tray PKG-0838 www.we-online.com/midcom | |
| 6B | 8/11 | | |
| 6A | 2/09 | SEE REVISION SHEET FOR REVISION LEVEL | |

Tolerances unless otherwise specified:
 Angles: ±1° Decimals: ±.005 [.13]
 Fractions: ±1/64 Footprint: ±.001 [.03]

This drawing is dual dimensioned. Dimensions in brackets are in millimeters.

DRAWING TITLE
TRANSFORMER

eiSos p/n: 750310349

PART NO.
750310349

SPECIFICATION SHEET 1 OF 1

