

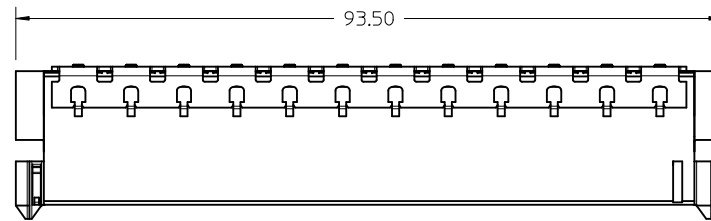
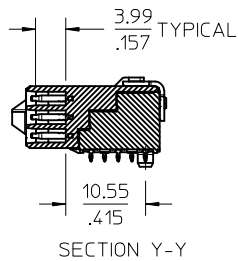
NOTES:

- 1) MATERIALS:
HOUSING - LIQUID CRYSTAL POLYMER, UL94 V-0
WAFER DIELECTRIC - LIQUID CRYSTAL POLYMER, UL94 V-0
CONTACT - COPPER ALLOY
CLIPS - STAINLESS STEEL
- 2) FINISHES: SEE SHEET 2
- 3) PRODUCT SPECIFICATION: THIS PART CONFORMS TO MOLEX SPECIFICATION PS-74148-0000.
- 4) PACKAGING SPECIFICATION: THIS PART TO BE PACKAGED PER SPECIFICATION PK-75020-030.
- 5) APPLICATION SPECIFICATION: THIS PART TO BE APPLIED PER SPECIFICATION AS-74148-0000. APPLICATION TOOL AND INSTRUCTIONS PER AS-74148-0000.
- 6) MATING INFORMATION
THIS PART MATES WITH 74148-XXXX (108 CIRCUIT).
WILL MATE WITH MAXIMUM OF 1.27mm MIS-ALIGNMENT
WILL MATE WITH MAXIMUM 0.75° MIS-ALIGNMENT
- 7) ORIENTATION
THIS PART CAN BE USED IN A STANDARD OR INVERTED ORIENTATION (I.E. ROTATED 180°)
- 8) SEE SHEET 3 FOR PCB LAYOUT INFORMATION
- 9) SEE SHEET 4 FOR CIRCUIT DESIGNATION
- 10) CIRCUITS IN THIS ZONE HAVE BEEN OMITTED TO SIMPLIFY THE MODEL. ACTUAL PRODUCT IS FULLY LOADED WITH TERMINALS
- 11) APPLICATION TOOLING KEEP OUT AREA. NO COMPONENTS ALLOWED IN THIS AREA.
- 12) CONFORMS TO MOLEX COSMETIC SPECIFICATION PS-45499-002 AND PS-45499-003.
- 13) MARKING: PART NUMBER, MX, DDDY
- 14) RECOMMENDED DRILL SIZE 0.48±0.03 TO YIELD FINISHED PLATED THROUGH HOLE 0.39±0.05

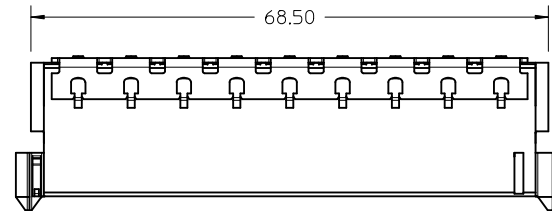
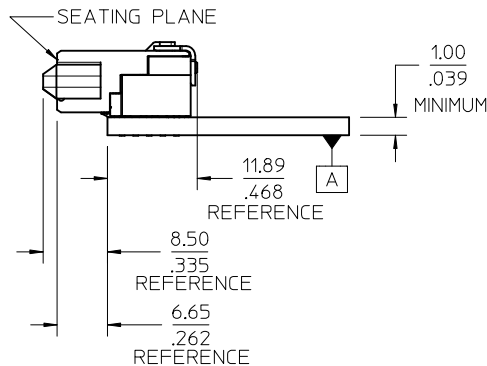
MOD 144CKT END OPT EC NO: UCP2013-2784 DRW: TIBARRA 2013/01/28 CHK: DBARKER 2013/02/07 APPR: SMILLER 2013/02/18	DESCRIPTION QUALITY SYMBOLS ▽=0 ▽=0 ▽=0	GENERAL TOLERANCES (UNLESS SPECIFIED)		DIMENSION STYLE MM/IN		SCALE 2:1	DESIGN UNITS METRIC	THIRD ANGLE PROJECTION		
				DRAWN BY MPOFF		DATE 2012/09/19		HS DOCK+ FLOATING CONNECTOR		
				CHECKED BY TIBARRA		DATE 2012/09/19				
				APPROVED BY SMILLER		DATE 2012/10/01		MOLEX INCORPORATED DOCUMENT NO. SD-74149-0001		
		MATERIAL NO.		SIZE		SHEET NO. 1 OF 5				
		DRAFT WHERE APPLICABLE MUST REMAIN WITHIN DIMENSIONS		THIS DRAWING CONTAINS INFORMATION THAT IS PROPRIETARY TO MOLEX INCORPORATED AND SHOULD NOT BE USED WITHOUT WRITTEN PERMISSION						

ITEM NUMBER	CIRCUIT SIZE	NO. OF COLUMNS 'N'	CENTERLINE DIMENSION 'A' mm(in)	O/A HEIGHT DIMENSION 'B' mm(in)	O/A LENGTH DIMENSION 'C' mm(in)	PEG TO PEG DIMENSION 'D' mm(in)	FIRST-LAST SIGNAL DIMENSION 'E' mm(in)	FIRST-LAST GROUND DIMENSION 'F' mm(in)	PLATING FINISH	HOUSING FINISH	GROUND OPTION
74149-1001	144	24	4.74 (.187)	9.98 (.393)	93.50 (3.681)	86.51 (3.406)	82.00 (3.228)	77.00 (3.031)	OPTION 1	NICKEL	2 TAIL
74149-1101	144	24	4.74 (.187)	9.98 (.393)	93.50 (3.681)	86.51 (3.406)	82.00 (3.228)	77.00 (3.031)	OPTION 1	NICKEL	3 TAIL
74149-3001	144	24	4.74 (.187)	9.98 (.393)	93.50 (3.681)	86.51 (3.406)	82.00 (3.228)	77.00 (3.031)	OPTION 2	GOLD	2 TAIL
74149-3101	144	24	4.74 (.187)	9.98 (.393)	93.50 (3.681)	86.51 (3.406)	82.00 (3.228)	77.00 (3.031)	OPTION 2	GOLD	3 TAIL
74149-4002	108	18	4.74 (.187)	9.98 (.393)	72.50 (2.854)	65.51 (2.579)	61.00 (2.402)	56.00 (2.205)	OPTION 1	NICKEL	2 TAIL
74149-4102	108	18	4.74 (.187)	9.98 (.393)	72.50 (2.854)	65.51 (2.579)	61.00 (2.402)	56.00 (2.205)	OPTION 1	NICKEL	3 TAIL
74149-5002	108	18	4.74 (.187)	9.98 (.393)	72.50 (2.854)	65.51 (2.579)	61.00 (2.402)	56.00 (2.205)	OPTION 2	GOLD	2 TAIL
74149-5102	108	18	4.74 (.187)	9.98 (.393)	72.50 (2.854)	65.51 (2.579)	61.00 (2.402)	56.00 (2.205)	OPTION 2	GOLD	3 TAIL

144 CKT



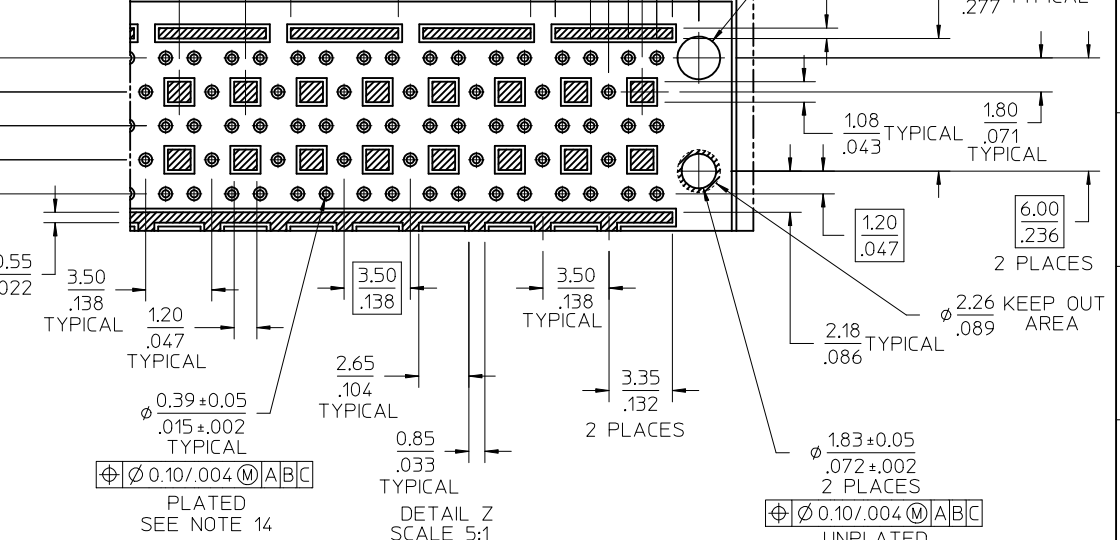
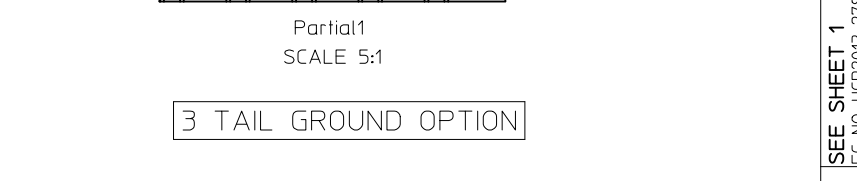
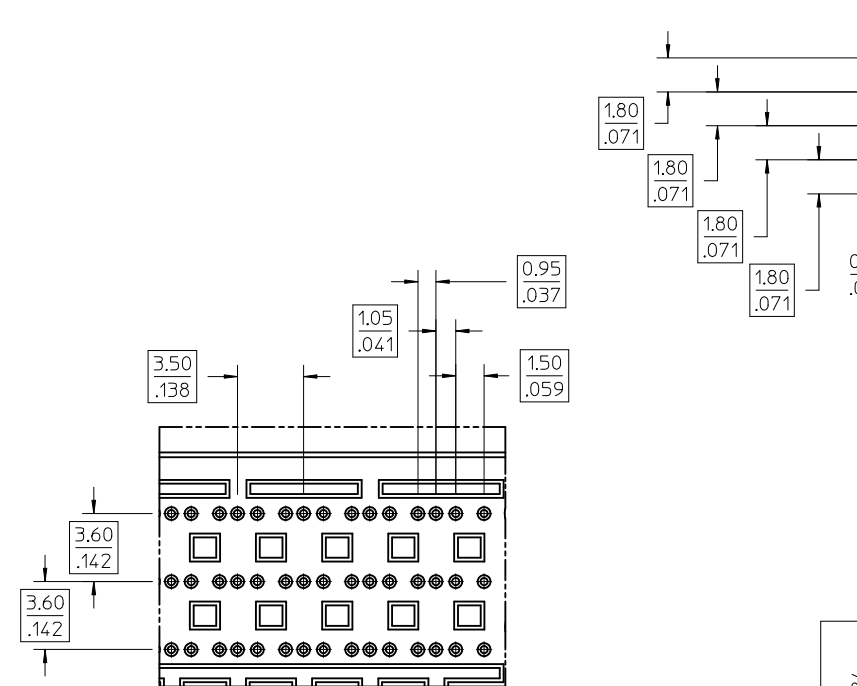
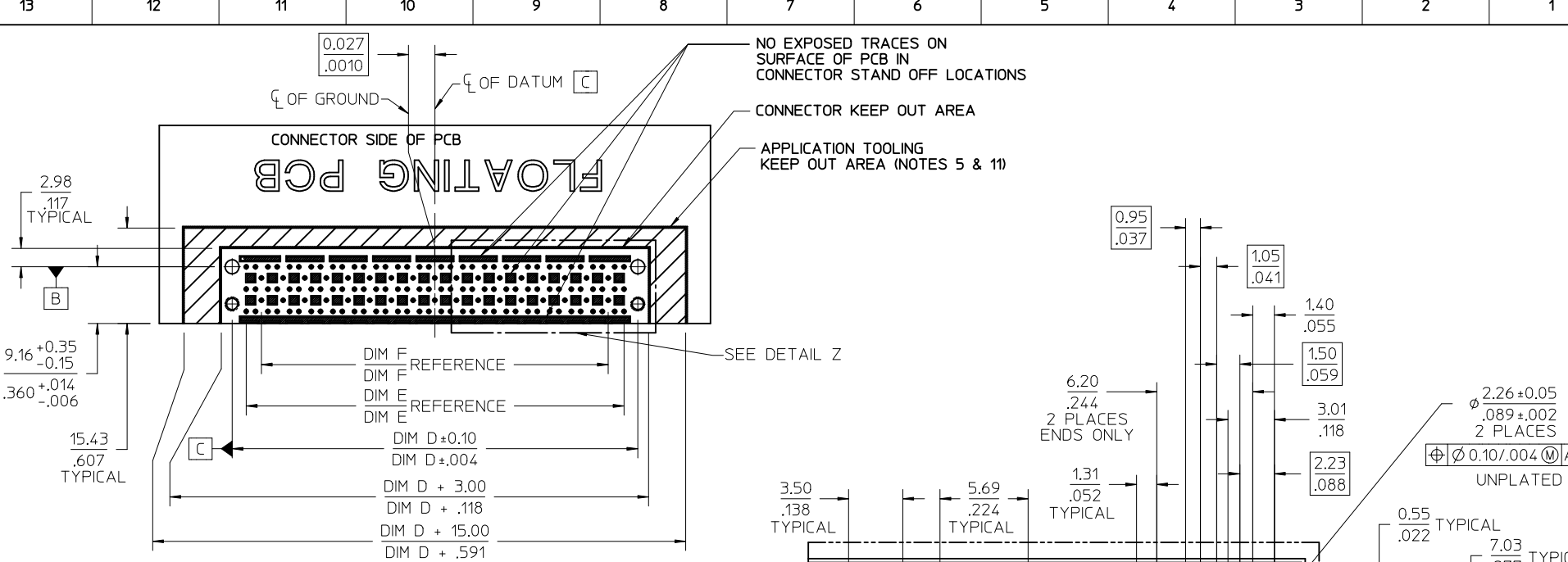
108 CKT



FINISHES:

- OPTION 1**
 CONTACT INTERFACE
 0.76 MICROMETER MINIMUM SELECT GOLD
 1.27 MICROMETER MINIMUM NICKEL OVERALL
 COMPLIANT INTERFACE
 0.76 MICROMETER MINIMUM SELECT TIN OVER
 1.27 MICROMETER MINIMUM NICKEL OVERALL
 HOUSING
 3.81 MICROMETER MINIMUM HIGH PHOS NICKEL OVER
 3.81 MICROMETER MINIMUM COPPER OVERALL
- OPTION 2**
 CONTACT INTERFACE
 0.76 MICROMETER MINIMUM SELECT GOLD
 1.27 MICROMETER MINIMUM NICKEL OVERALL
 COMPLIANT INTERFACE
 0.76 MICROMETER MINIMUM SELECT TIN OVER
 1.27 MICROMETER MINIMUM NICKEL OVERALL
 HOUSING
 0.10 MICROMETER MAXIMUM IMMERSION GOLD
 3.81 MICROMETER MINIMUM HIGH PHOS NICKEL OVER
 3.81 MICROMETER MINIMUM COPPER OVERALL

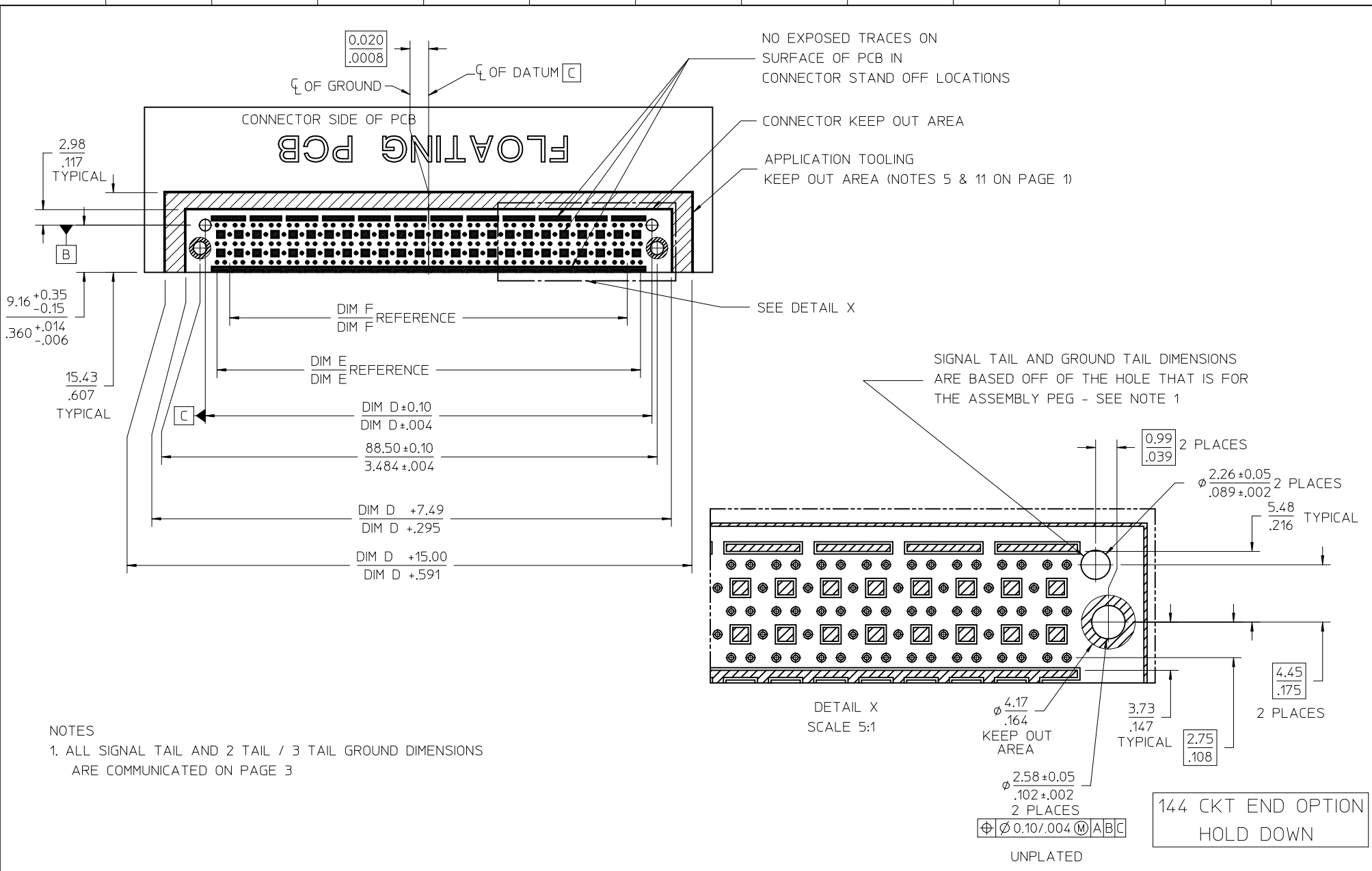
SEE SHEET 1 EC NO: UCP2013-2784 DRWN: TIBARRA 2013/01/28 CHKD: BARKER 2013/02/07 APPR: MILLER 2013/02/18	QUALITY SYMBOLS ∇=0 ∇=0 ∇=0	GENERAL TOLERANCES (UNLESS SPECIFIED)		DIMENSION STYLE		SCALE	DESIGN UNITS	THIRD ANGLE PROJECTION			
				MM/IN		2:1	METRIC				
						DRAWN BY DATE		TITLE			
						MPOFF 2012/09/19		HS DOCK+ FLOATING CONNECTOR			
				CHECKED BY DATE		MOLEX MOLEX INCORPORATED					
				TIBARRA 2012/09/19		SD-74149-0001					
				APPROVED BY DATE		SHEET NO. 2 OF 5					
				SMILLER 2012/10/01		THIS DRAWING CONTAINS INFORMATION THAT IS PROPRIETARY TO MOLEX INCORPORATED AND SHOULD NOT BE USED WITHOUT WRITTEN PERMISSION					
				MATERIAL NO.							
				SEE TABLE							
				DRAFT WHERE APPLICABLE MUST REMAIN WITHIN DIMENSIONS							
				SIZE							



2 TAIL GROUND OPTION - 108 CKT END OPTION

3 TAIL GROUND OPTION

SEE SHEET 1 EC NO: UCP2013-2784 DRWN: TIBARRA 2013/01/28 CHKD: BBARKER 2013/02/07 APPR: SMILLER 2013/02/18 REV:	QUALITY SYMBOLS ▽=0 ▽=0 ▽=0	GENERAL TOLERANCES (UNLESS SPECIFIED) <table border="1"> <thead> <tr> <th></th> <th>mm</th> <th>INCH</th> </tr> </thead> <tbody> <tr> <td>4 PLACES</td> <td>± .10</td> <td>± .004</td> </tr> <tr> <td>3 PLACES</td> <td>± .13</td> <td>± .005</td> </tr> <tr> <td>2 PLACES</td> <td>± 0.13</td> <td>± .01</td> </tr> <tr> <td>1 PLACE</td> <td>± 0.25</td> <td>± .01</td> </tr> </tbody> </table>		mm	INCH	4 PLACES	± .10	± .004	3 PLACES	± .13	± .005	2 PLACES	± 0.13	± .01	1 PLACE	± 0.25	± .01	DIMENSION STYLE MM/IN	SCALE 2:1	DESIGN UNITS METRIC	THIRD ANGLE PROJECTION
		mm	INCH																		
	4 PLACES	± .10	± .004																		
	3 PLACES	± .13	± .005																		
2 PLACES	± 0.13	± .01																			
1 PLACE	± 0.25	± .01																			
DRAFT WHERE APPLICABLE MUST REMAIN WITHIN DIMENSIONS		DRAWN BY MPOFF 2012/09/19	CHECKED BY TIBARRA 2012/09/19	HS DOCK+ FLOATING CONNECTOR																	
		APPROVED BY SMILLER 2012/10/01	MATERIAL NO. SEE TABLE	DOCUMENT NO. SD-74149-0001	MOLEX INCORPORATED																
		THIS DRAWING CONTAINS INFORMATION THAT IS PROPRIETARY TO MOLEX INCORPORATED AND SHOULD NOT BE USED WITHOUT WRITTEN PERMISSION			SHEET NO. 3 OF 5																

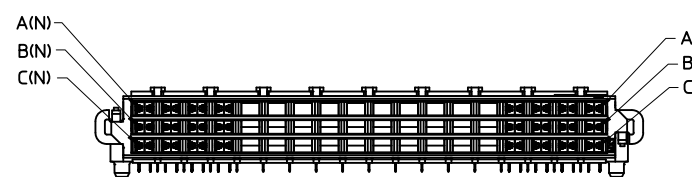
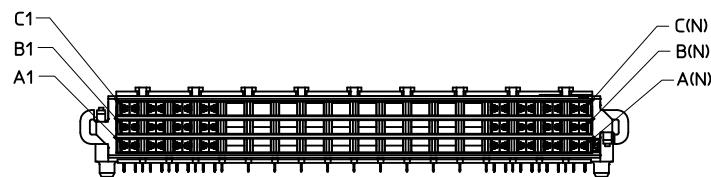
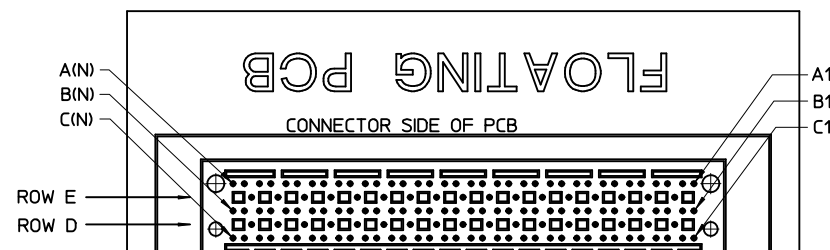
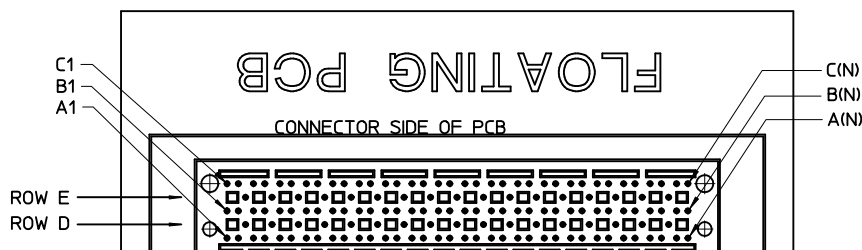
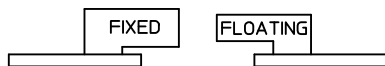


NOTES
 1. ALL SIGNAL TAIL AND 2 TAIL / 3 TAIL GROUND DIMENSIONS ARE COMMUNICATED ON PAGE 3

SEE SHEET 1 EC NO: UCP2013-2784 DRAWN: IBARRA 2013/01/28 CHKD: BBARKER 2013/02/07 APPR: SMILLER 2013/02/18	QUALITY SYMBOLS ∇=0 ∇=0 ∇=0	GENERAL TOLERANCES (UNLESS SPECIFIED) <table border="1"> <thead> <tr> <th></th> <th>mm</th> <th>INCH</th> </tr> </thead> <tbody> <tr> <td>4 PLACES ±</td> <td>---</td> <td>---</td> </tr> <tr> <td>3 PLACES ±</td> <td>---</td> <td>±.005</td> </tr> <tr> <td>2 PLACES ±</td> <td>0.13</td> <td>±.01</td> </tr> <tr> <td>1 PLACE ±</td> <td>0.25</td> <td>---</td> </tr> <tr> <td>0 PLACE ±</td> <td>±</td> <td>±</td> </tr> </tbody> </table>		mm	INCH	4 PLACES ±	---	---	3 PLACES ±	---	±.005	2 PLACES ±	0.13	±.01	1 PLACE ±	0.25	---	0 PLACE ±	±	±	DIMENSION STYLE MM/IN	SCALE 2:1	DESIGN UNITS METRIC	THIRD ANGLE PROJECTION
		mm	INCH																					
	4 PLACES ±	---	---																					
	3 PLACES ±	---	±.005																					
	2 PLACES ±	0.13	±.01																					
1 PLACE ±	0.25	---																						
0 PLACE ±	±	±																						
REV C	DRAFT WHERE APPLICABLE MUST REMAIN WITHIN DIMENSIONS	ANGULAR ±1/2°	DRAWN BY MPOFF	DATE 2012/09/19	CHECKED BY TIBARRA	DATE 2012/09/19																		
			APPROVED BY SMILLER	DATE 2012/10/01	MATERIAL NO. SEE TABLE																			
			DOCUMENT NO. SD-74149-0001		SHEET NO. 4 OF 5																			
			THIS DRAWING CONTAINS INFORMATION THAT IS PROPRIETARY TO MOLEX INCORPORATED AND SHOULD NOT BE USED WITHOUT WRITTEN PERMISSION																					

STANDARD APPLICATION CIRCUIT DESIGNATIONS

INVERTED APPLICATION CIRCUIT DESIGNATIONS



CIRCUIT DESIGNATION

FIRST MATE: HOUSING - SIGNAL GROUND
 SECOND MATE: A1, C1, A(N), C(N) (FOR POWER RETURN)
 THIRD MATE: A2, B2, C2, A(N-1), B(N-1), C(N-1) & ALL OTHERS
 (A2, C2, A(N-1) & C(N-1) FOR POWER)
 (ALL OTHERS FOR SIGNAL)
 LAST MATE: B1, B(N) (FOR CARD DETECT)

ALL COLUMNS FROM 3 THROUGH (N-2) ARE SUITABLE FOR
 DIFFERENTIAL PAIRS
 EG: A3-A4, B3-B4, C3-C4, A(N-2)-A(N-3), B(N-2)-B(N-3)

SIGNAL GROUND: ROWS D & E

SEE SHEET 1 EC NO: UCP2013-2784 DRWNT:IBARRA 2013/01/28 CHKD:BBARKER 2013/02/07 APPR:SMILLER 2013/02/18	QUALITY SYMBOLS ▽=0 ▽=0 ▽=0	GENERAL TOLERANCES (UNLESS SPECIFIED)		DIMENSION STYLE MM/IN	SCALE 2:1	DESIGN UNITS METRIC	THIRD ANGLE PROJECTION	
		4 PLACES ± --- ± ---	DRAWN BY MPOFF	DATE 2012/09/19	TITLE HS DOCK+ FLOATING CONNECTOR			
		3 PLACES ± --- ± .005	CHECKED BY TIBARRA	DATE 2012/09/19				
		2 PLACES ± 0.13 ± .01	APPROVED BY SMILLER	DATE 2012/10/01	MOLEX INCORPORATED			
1 PLACE ± 0.25 ± ---	ANGULAR ± 1/2°		MATERIAL NO.	DOCUMENT NO.	SHEET NO.			
DRAFT WHERE APPLICABLE MUST REMAIN WITHIN DIMENSIONS		SEE TABLE		SD-74149-0001		5 OF 5		
THIS DRAWING CONTAINS INFORMATION THAT IS PROPRIETARY TO MOLEX INCORPORATED AND SHOULD NOT BE USED WITHOUT WRITTEN PERMISSION								